

TC

A

33 Fitzroy Square
London, W1T 6EU

Thomas Croft Architects
Studio 117
Great Western Studios
65 Alfred Road
London, W2 5EU
United Kingdom

TCA Presentation 61 -
Proposal for External Lighting

+44 (0)20 8962 0066
email@thomascroft.com
www.thomascroft.com

London
14th February 2019

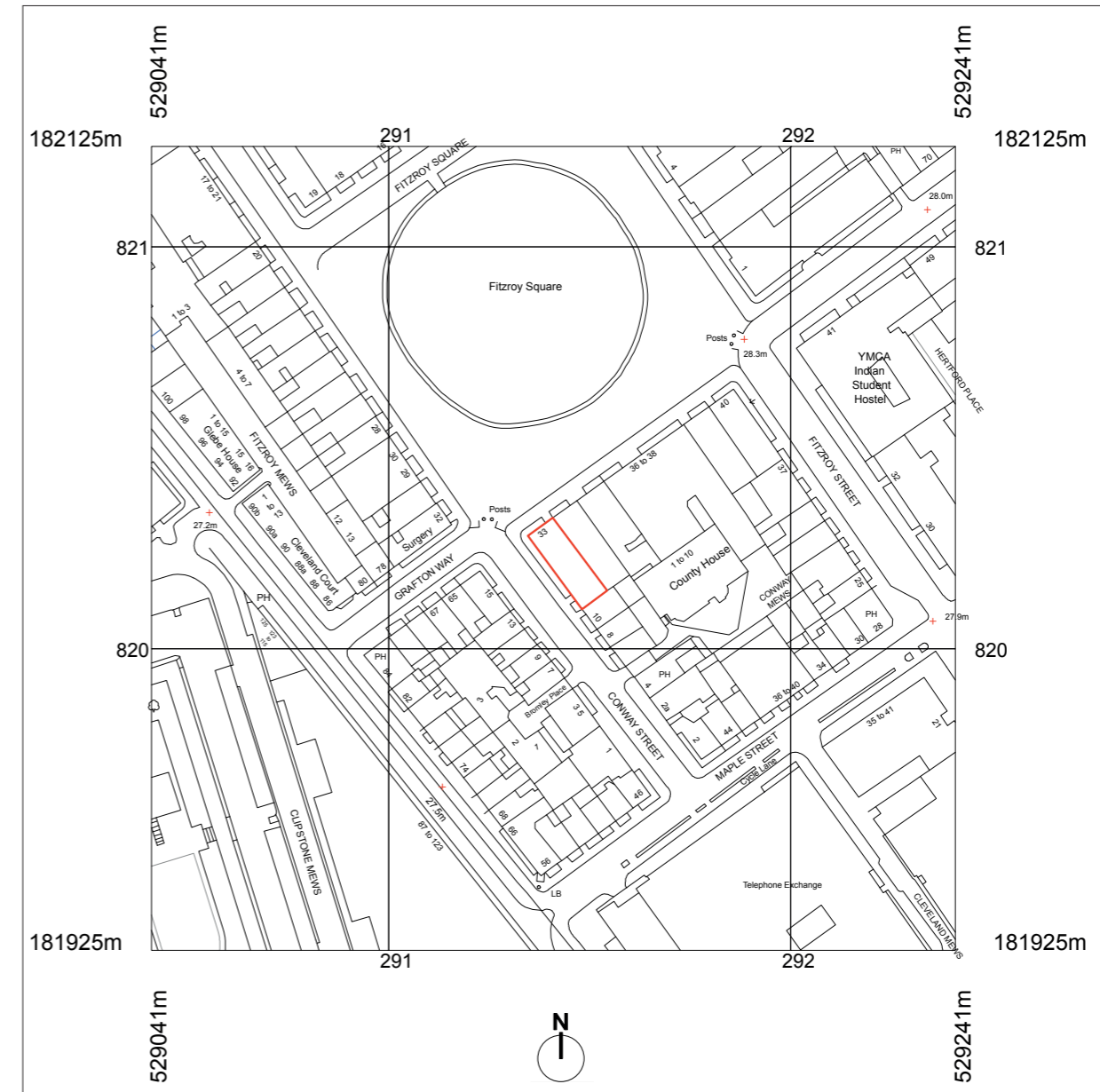
Contents

-
1. Introduction
 2. Description of the Proposal
 3. Lighting Design International
 - Concept Reference Images
 - Facade Design
 4. Appendix
 - Manufacturer's Data and Specification Sheets

1. Introduction

This document is prepared in support of a Planning and Listed Building Application for the proposal for external lighting at No. 33 Fitzroy Square, London, W1T 6EU.

33 Fitzroy Square is a Robert Adam designed townhouse dating from 1790. The property is Grade 1 listed located within Camden's Fitzroy Square Conservation Area.



Site Location Plan

2. Description of the Proposal

The lighting scheme designed for the front façade of 33 Fitzroy Square has been developed to softly accentuate the key historical and architectural features of the building.

The objective of the lighting scheme aims to enhance the Neoclassical architecture. The lighting concept is built up in 'layers'. The first 'layer', the simple uplighting of the window and door reveals on all floors allows the scale of the building to be expressed while using relatively low light levels. The second 'layer', local spotlighting softly washing the central blank stone panels creates a backdrop for the medallions. The third 'layer', the uplighting to the central pillars accentuates the scale and significance of the main central window. The wall-mounted lanterns to the front door will provide practical and inviting illumination for guests entering the building.

Our intention is to specify Dali dimmable fittings for the whole façade (other than the decorative historical wall lights) in order to provide the capability to adjust the lighting to appropriate levels of illumination.

3. Lighting Design International - Concept Reference Images



5345 33 FITZROY SQUARE

FACADE DESIGN

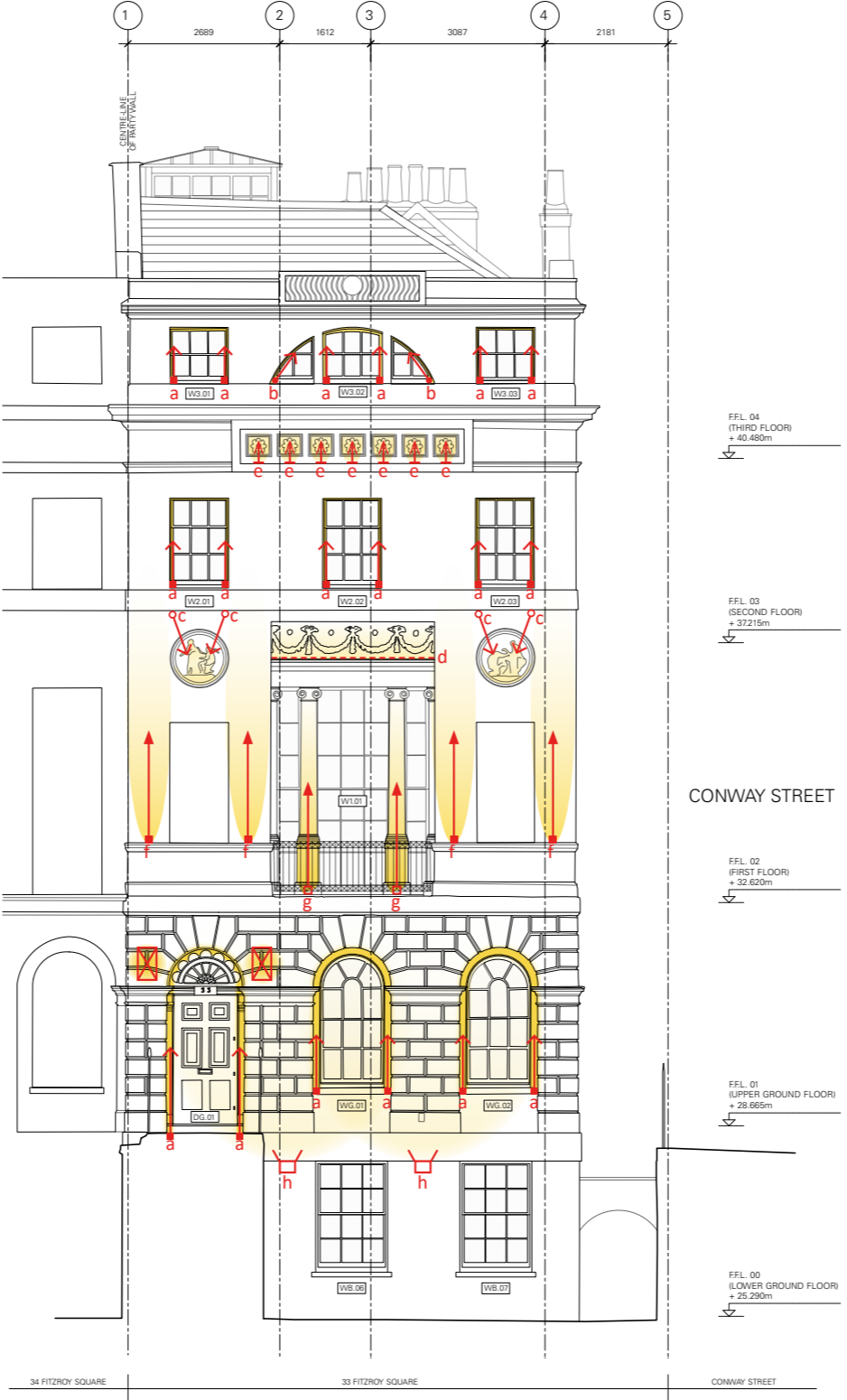
ISSUED

REV - 14 FEBRUARY 2019

33 FITZROY SQUARE

INITIAL CONCEPT

Key	
	Small Surface Mounted Uplight - Narrow Beam
	Small Surface Mounted Adjustable Uplight - Narrow Beam
	Small Stalk Mounted Spotlight - Medium Beam
	Surface Mounted Low Output Linear Led - Narrow Beam
	Miniature Surface Mounted Uplight - Narrow Beam
	Surface Mounted Uplight - Medium Beam
	Surface Mounted Uplight - Narrow Beam
	Wall Mounted Flood Light - Wide Beam
	Decorative Historical Wall Light (by others)



1 PROPOSED FRONT ELEVATION
1:50 @ A1, 1:100 @ A3

33 FITZROY SQUARE

PHOTOSHOP VISUAL



LIGHTING DESIGN
INTERNATIONAL

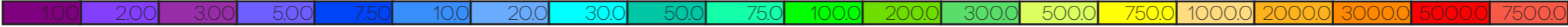
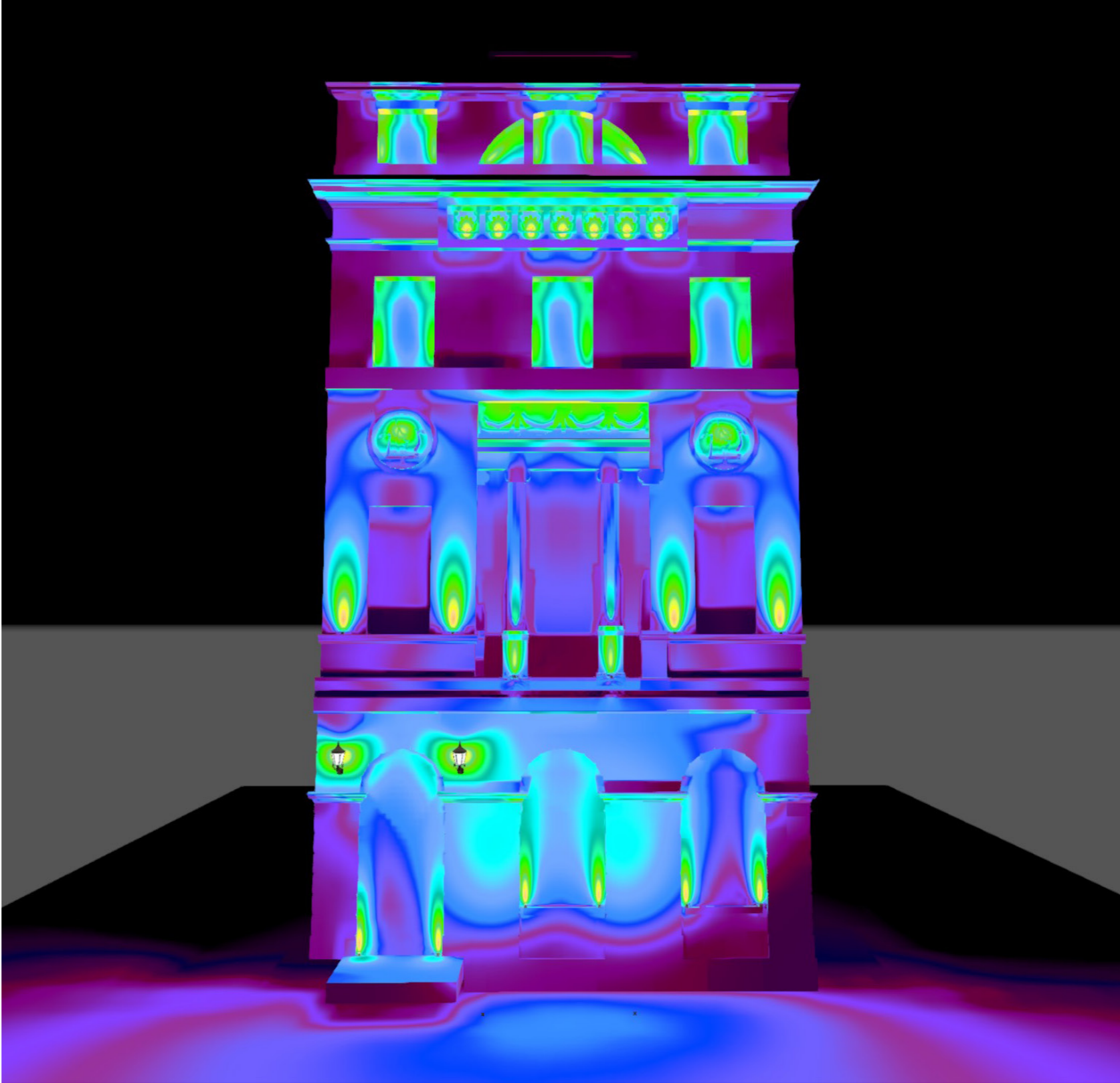
33 FITZROY SQUARE

LIGHTING CALCULATION



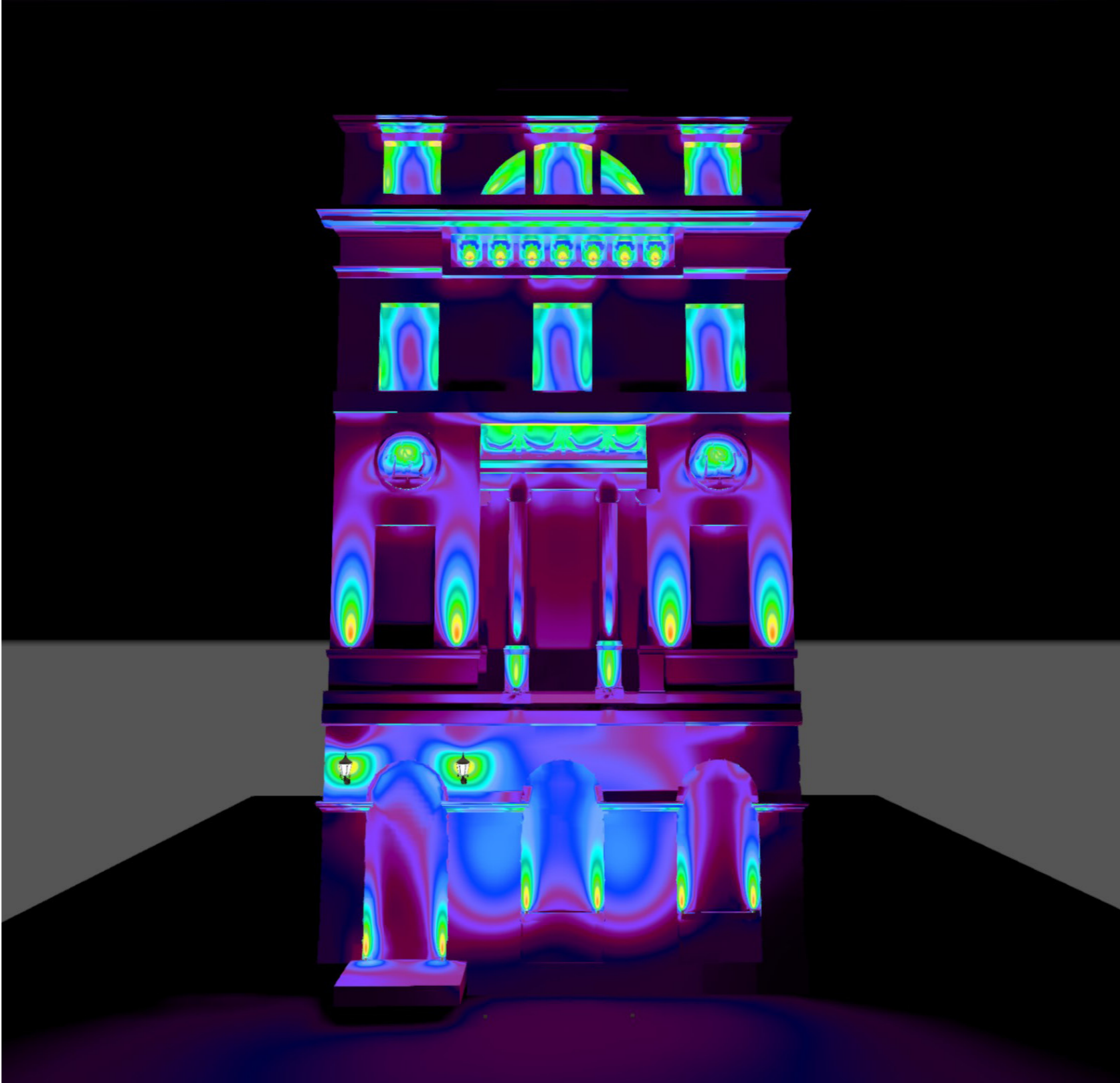
33 FITZROY SQUARE

LIGHTING CALCULATION - LUX LEVELS



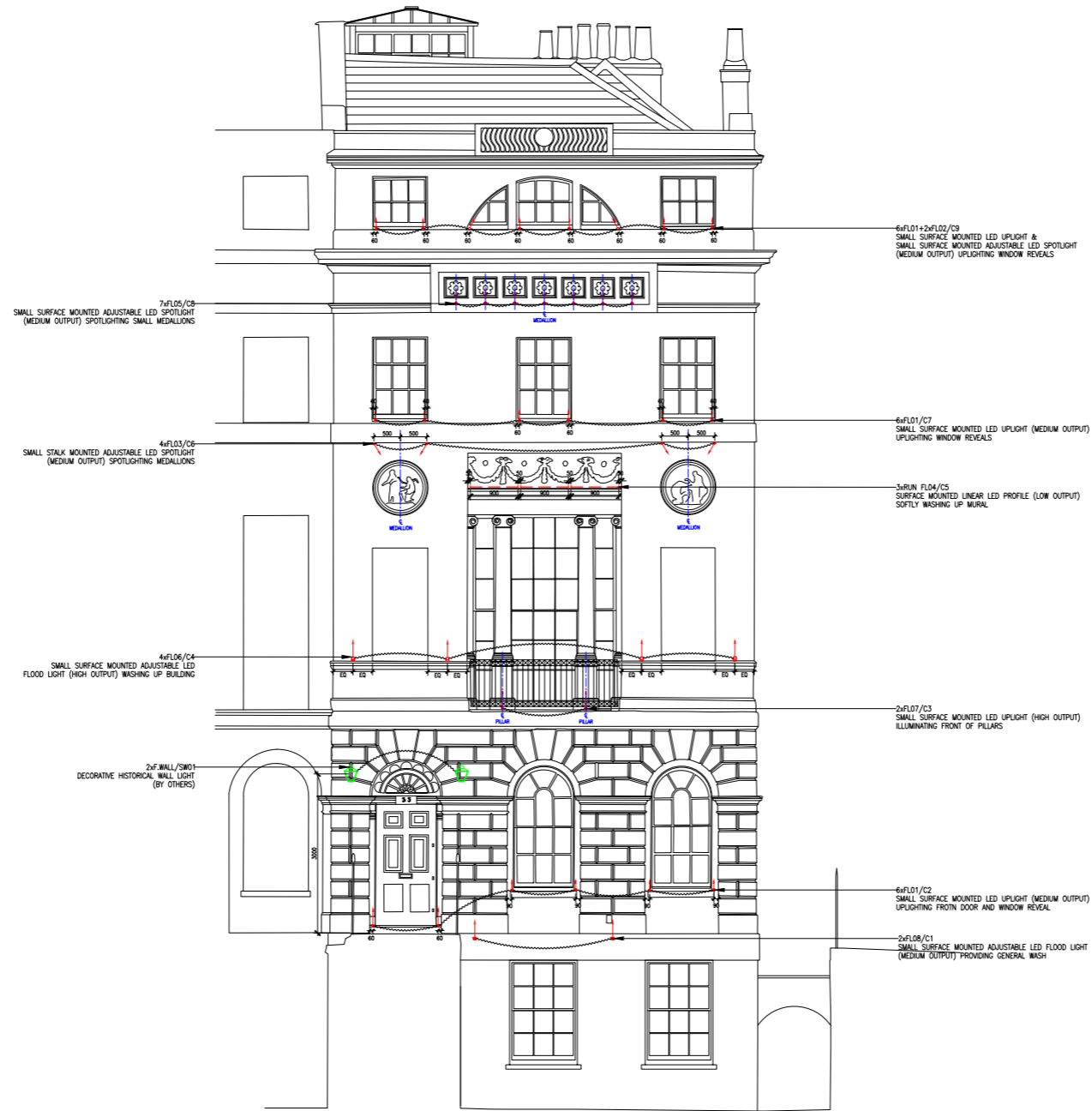
33 FITZROY SQUARE

LIGHTING CALCULATION - LUX LEVELS



33 FITZROY SQUARE

ELEVATION DRAWING



NOTES		
THIS DRAWING IS TO BE READ IN CONJUNCTION WITH THE DRAWING KEY.		
© LIGHTING DESIGN INTERNATIONAL 2019.		
DO NOT SCALE FROM THIS DRAWING. ANY DISCREPANCIES OR QUERIES ARE TO BE RAISED WITH LIGHTING DESIGN INTERNATIONAL FOR CLARIFICATION.		
SYMBOL	L. REF.	DESCRIPTION
↓	FL01	SMALL SURFACE MOUNTED LED UPLIGHT (MEDIUM OUTPUT)
↓	FL02	SMALL SURFACE MOUNTED ADJUSTABLE LED SPOTLIGHT (MEDIUM OUTPUT)
↓	FL03	SMALL STALK MOUNTED ADJUSTABLE LED SPOTLIGHT (MEDIUM OUTPUT)
---	FL04	SURFACE MOUNTED LINEAR LED PROFILE (LOW OUTPUT)
↓	FL05	SMALL SURFACE MOUNTED ADJUSTABLE LED SPOTLIGHT (MEDIUM OUTPUT)
↓	FL06	SMALL SURFACE MOUNTED ADJUSTABLE LED FLOOD LIGHT (HIGH OUTPUT)
↓	FL07	SMALL SURFACE MOUNTED LED UPLIGHT (HIGH OUTPUT)
↓	FL08	SMALL SURFACE MOUNTED ADJUSTABLE LED FLOOD LIGHT (MEDIUM OUTPUT)
🗑️	F.WALL	DECORATIVE HISTORICAL WALL LIGHT (BY OTHERS)

PRELIMINARY

ISSUED FOR INFORMATION	14.02.2019	
REV	PURPOSE/STATUS OF ISSUE	ISSUE DATE
PROJECT:		
33 FITZROY SQUARE		
DRAWING TITLE:		
FACADE LIGHTING FRONT ELEVATION		
BACKGROUND/REF FILE: 2019_AE		
PROJECT NUMBER: 2045	SCALE:	
DRAWING NO: 2045 FAC01	REV: --	
DRAWING SIZE: A1		





LIGHTING DESIGN
INTERNATIONAL

LIGHTING DESIGN INTERNATIONAL · 3 HAMMERSMITH STUDIOS · 55A YELDHAM ROAD · LONDON · W6 8JF
T+44 (0)20 8600 5777 · F+44 (0)20 86005778 · DESIGN@LDI-UK.COM · WWW.LIGHTINGDESIGNINTERNATIONAL.COM

LD95 FL01 (500mA) + FL07 (700mA)



Miniature Floor or Ceiling Mounted Spotlight

Data sheet - Page 1

LD95 is a miniature floor or ceiling mounted spotlight. It has been designed for applications where a recessed fitting cannot be installed, and a discreet, non obtrusive solution is required. It features a deep recessed LED and optional glare shield, removing the need for a large cowl. Using the latest in LED technology, with a typical 93 CRI in 3000K warm white, the LD95 offers an excellent diffused beam shape from a range of optics. The LD95 incorporates an integral anti-wicking barrier for added protection and is available with a choice of switch, 0-10V, DMX, Dali or mains dimmable remote drivers.

Key Features

- Miniature design with high output LED
- Excellent diffused beam shape from a range of optics
- Optional glare shield accessory
- Typical 93 CRI in 3000K warm white
- Integral anti-wicking barrier provides increased protection against moisture
- Range of finishes available
- Variable output options
- Machined from a solid billet of aluminium
- Reverse polarity protection
- Available with Switch, 0-10V, DMX, Dali or Mains dimmable drivers

Specification

Applications



Beam Angles 12°, 31°, 48°, 36° x 12°

LED type 1 x Cree XPG2

Colour temperature	2700K** / 3000K			5000K		
	350	500	700	350	500	700
Drive Current (mA)	350	500	700	350	500	700
LED power* (W)	1.2W	1.7W	2.4W	1.2W	1.7W	2.4W
CRI (typical)	93	93	93	80	80	80
Forward voltage (V) ₁₀₀	3.0V	3.2V	3.4V	3.0V	3.2V	3.4V
Delivered lumens** (L ₁₀₀)	90	123	164	109	149	200
Lumens per circuit watt	75	72	68	91	88	83

LED lifetime (to 70% lumen maintenance) 50,000hrs at a max ambient temperature of 35°C (if specifying fitting in ambient temperatures of up to 45°C run at 500mA max, LD95-500)

Materials Machined and iridited aluminium body, with a black anodised bezel

Glass 1mm thick low iron glass

Wiring Comes pre-wired with a 1m lead, can be specified with up to 10m at extra cost

IP rating IP66

*LED wattage includes losses associated with using an 85% efficient driver

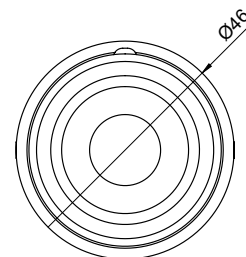
** 2700K lumen output is 12% lower than the 3000K figure listed

4000K lumen output is 14% higher than the 3000K figure listed (80 CRI)

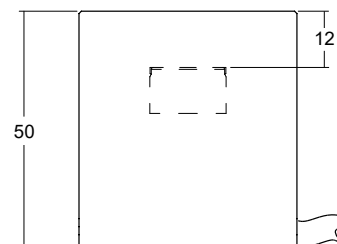


Dimensions

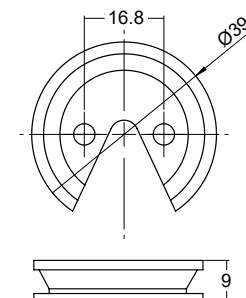
Top View



Side View



Mounting plate



LD95

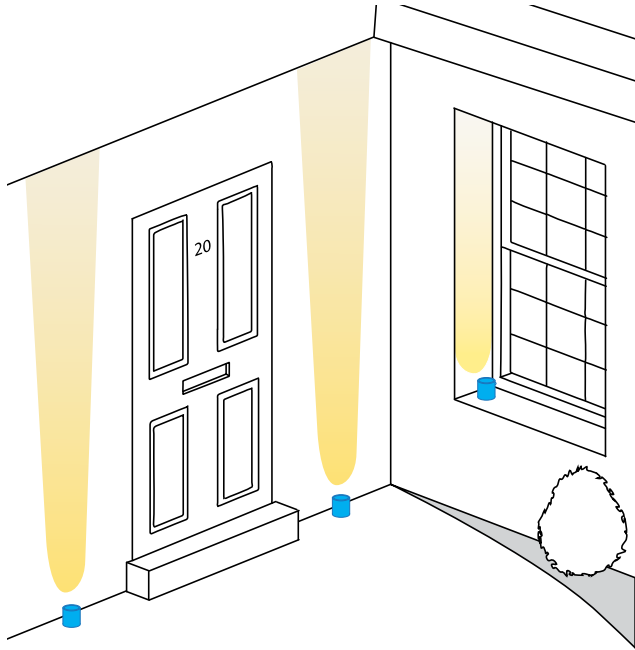


Miniature Floor or Ceiling Mounted Spotlight

Data sheet - Page 2

Applications

LD95 is incredibly versatile, allowing it to be used in a variety of applications from lighting window reveals to wall and floor washing.



Accessories

/GS - Glare shield

An optional glare shield is available for the LD95 to further reduce glare from the LED and optic. This does not reduce the light on the lit surface (wall) but will cut out some light onto the ceiling or floor.



Cone Diagrams

Cone diagrams below are based on a 3000K LED run at maximum output 700mA.

Narrow Beam
700mA using a 12° optic

Distance (m)	Luminance (lx)
0.5	4743
1.0	1186
1.5	527
2.0	296
2.5	190
3.0	132

Cone Width (m)

Medium Beam
700mA using a 31° optic

Distance (m)	Luminance (lx)
0.5	2199
1.0	550
1.5	244
2.0	137
2.5	88
3.0	61

Cone Width (m)

Wide Beam
700mA using a 48° optic

Distance (m)	Luminance (lx)
0.5	1169
1.0	292
1.5	130
2.0	73
2.5	47
3.0	32

Cone Width (m)

Oval Beam
700mA using a 36°x12° optic

Distance (m)	Luminance (lx)
0.5	2944
1.0	736
1.5	327
2.0	184
2.5	118
3.0	82

Cone Width (m)

Finish Options

A range of paint finishes are available which are suitable for exterior applications. Please refer to our finished guide for more information.

Paint Finish
White

Paint Finish
Black

Paint Finish
Antique Bronze



Photometric files (LDT) are included in the design pack which can be downloaded from the LD95 product page on the website.

LD95

Miniature Floor or Ceiling Mounted Spotlight



Data sheet - Page 3

Lens Options

/NB - 12° narrow



/MB - 31° medium



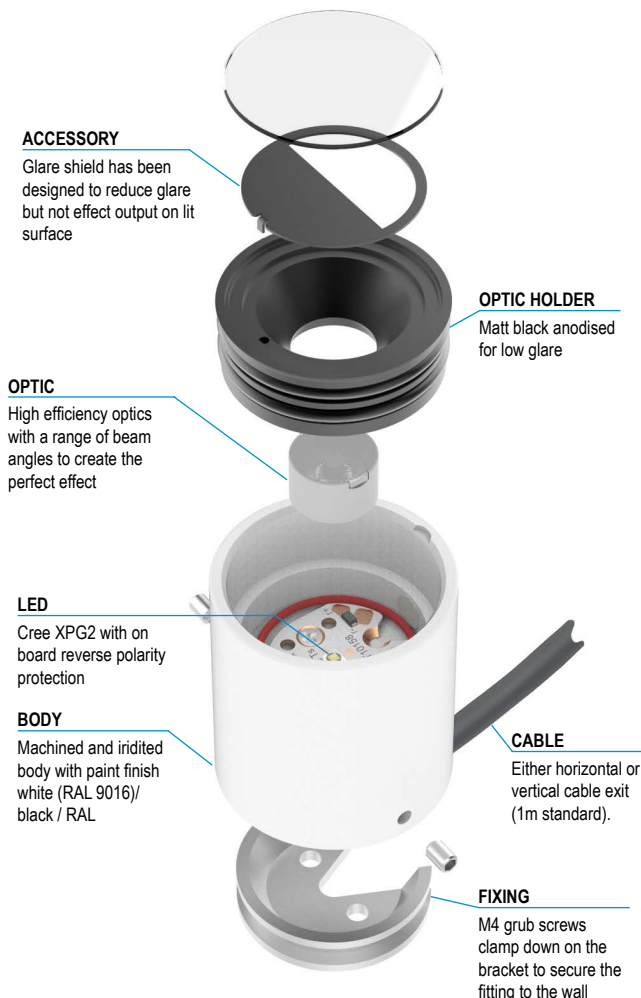
/WB - 48° wide



/OB - 36° x 12° oval



Product Parts



Order Codes and Options

Product code	LED colour	Lens angle	Accessory	Finish
LD95 - 350 - 500 - 700	<input type="text"/>	<input type="text"/>	<input type="text"/>	<input type="text"/>

Example: LD95-700 / LW30 / MB / GS / White

Product codes with output options

1.2W LED at 350mA	LD95-350
1.7W LED at 500mA	LD95-500
2.4W LED at 700mA	LD95-700

LED colour options

Extra Warm White (2700K)	/LW27
Warm White (3000K)	/LW30
White (4000K)	/LW40
Cool White (5000K)	/LW50

Beam / lens angle options

12° narrow spot	/NB
31° medium	/MB
48° wide	/WB
36° x 12° oval	/OB

Accessory

Glare shield (GS56T)	/GS
----------------------	-----

Finish options

Body - Paint finish white (RAL 9016) / black / RAL
For marine environments specify powder coat

Use with 350mA, 500mA and 700mA constant current LED drivers

We have a wide range of dimmable LED drivers, 0-10V, DMX, DALI and Mains dimmable. Please see the downloads section on our website:

- To run 1-14 LD95-350 in series use a TXDEL350D (0-10V dimmable)
- To run 1-14 LD95-500 in series use a TXDEL500D (0-10V dimmable)
- To run 1-13 LD95-700 in series use a TXDEL700D (0-10V dimmable)

LD51 FL02 (500mA) + FL03(500mA/Stalk) + FL05 (350mA)



Miniature Surface Mounted Adjustable LED Spotlight

Data sheet - Page 1



Design Installation: Richard Horley Lighting Design Ltd Project: The Burgess Product: LD51, LD56, LD38

LD51 is a miniature IP67 rated, surface mounted, adjustable LED spotlight. The high power LED is focussed with a range of optics that offer excellent beam shape in various angles. It is machined from high quality machined components with a range of accessories making it ideal for both interior and exterior projects.

Key Features

- LED and lens assembly recessed within a black anodised body for reduced glare
- Optional glare cowl accessory can be rotated to hide glare from selected angles
- Lockable tilt mechanism
- Fixed & adjustable ground spike accessories for garden/planter lighting
- Typical 93 CRI in 3000K warm white
- High efficiency optics available
- Integral anti wicking barrier increases protection against moisture ingress due to incorrect IP rated cable connections
- Range of finishes available
- Available with Switch, 0-10V, DMX, Dali or Mains dimmable drivers

Specification

Applications



Beam Angles

12°, 31°, 48°, 36° x 12°

LED type

1 x Cree XPG2

Colour temperature

2700K** / 3000K

5000K

Drive Current (mA)

350

500

700

350

500

700

LED power* (W)

1.2W

1.7W

2.4W

1.2W

1.7W

2.4W

CRI (typical)

93

93

93

75

75

75

Forward voltage (V)₁₀₀

3.0V

3.2V

3.4V

3.0V

3.2V

3.4V

Delivered lumens** (L₁₀₀)

95

130

174

116

158

211

Lumens per circuit watt

79

76

73

97

93

88

LED lifetime (to 70% lumen maintenance)

50,000hrs at a max ambient temperature of 35°C (if specifying fitting in ambient temperatures of up to 45°C run at 500mA max, LD51-500)

Materials

Anodised aluminium body with stainless steel fixing bracket. Optional stainless steel ground spike and anodised aluminium cowl

Glass

3mm thick borosilicate

Wiring

Comes pre-wired with 2 core 500mm lead, can be specified with up to 10m at extra cost

IP rating

IP67

*LED wattage includes losses associated with using an 85% efficient driver

**2700K lumen output is 12% lower than the 3000K figure listed

4000K lumen output is 14% higher than the 3000K figure listed (80 CRI)



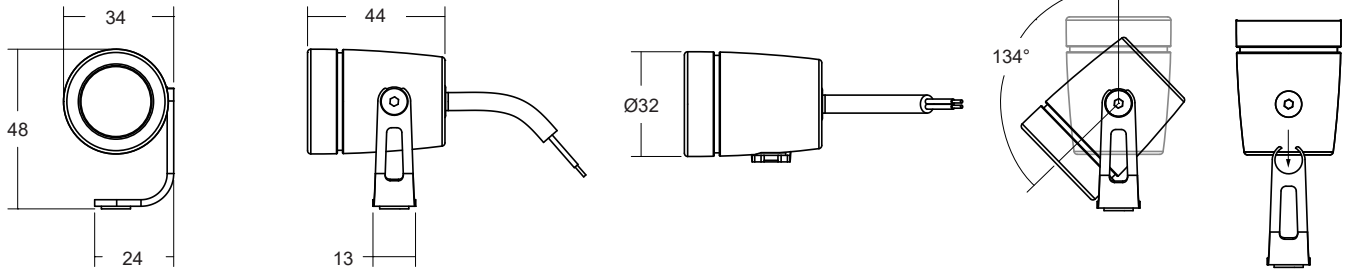
LD51



Miniature Surface Mounted Adjustable LED Spotlight

Data sheet - Page 2

Dimensions and Accessories

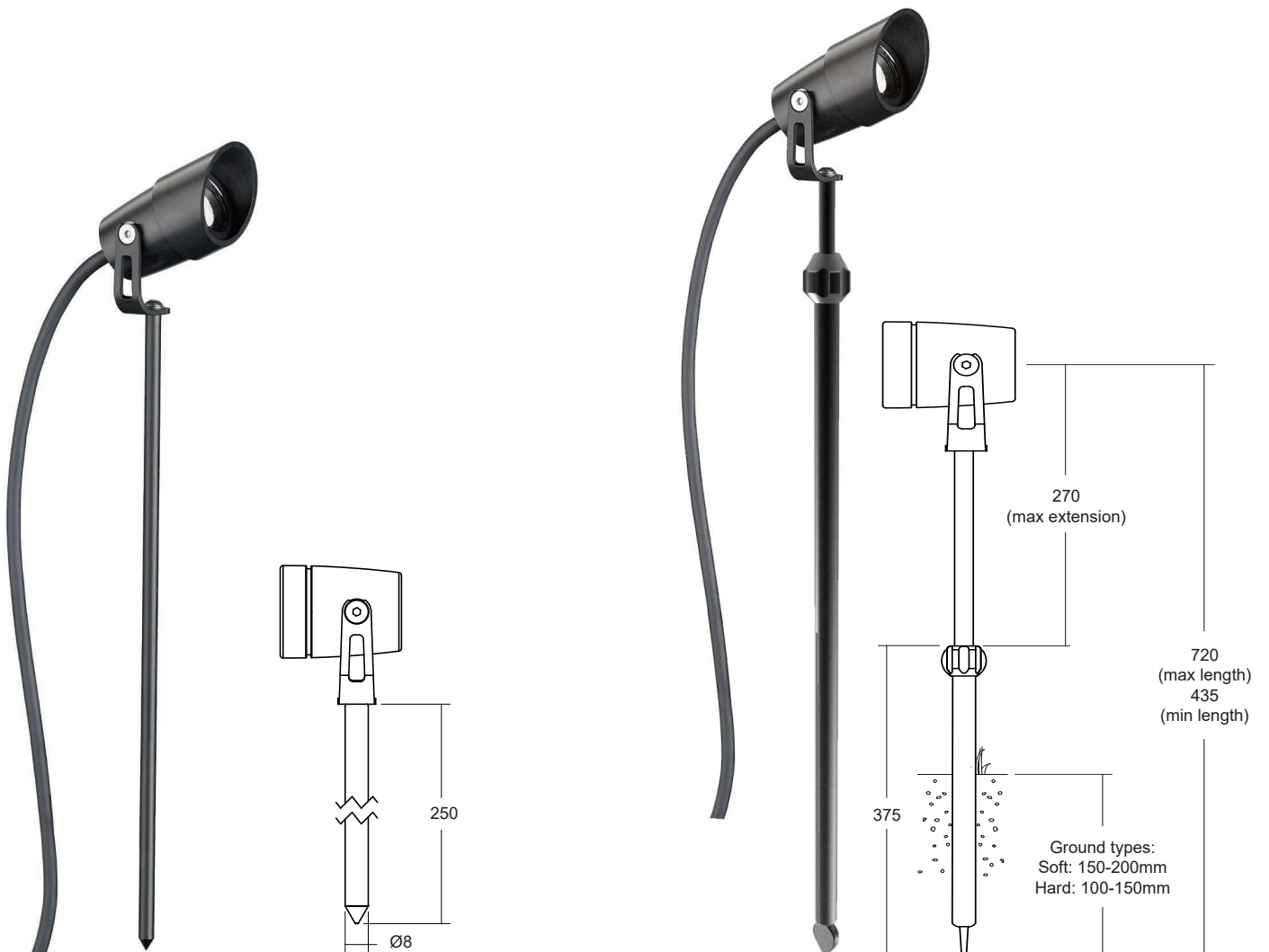


/GS - Ground Spike

The ground spike is manufactured out of stainless steel and then painted to match the LD51 body. The standard length is 250mm.

/GSA - Adjustable Ground Spike

The adjustable ground spike is manufactured out of stainless steel and then painted to match the LD51 body. It is supplied with a 2m cable as standard.



LD51



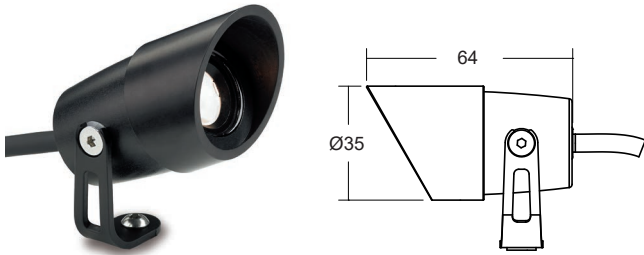
Miniature Surface Mounted Adjustable LED Spotlight

Data sheet - Page 3

Dimensions and Accessories Cont.

/CO - Anti Glare Cowl

With the aid of an O-ring the cowl is securely fitted to the LD51. This allows it to be rotated to hide glare.



/TS - Tree Strap

The tree strap allows the LD51 to grip a trunk when tightened. A tilt adjustment of 10deg can be achieved towards the tree to provide a vertical beam.



/SMB - Surface Mount Base



Design: DPA Lighting Project: Waldorf Astoria, Amsterdam Product: LD51

LD51

Miniature Surface Mounted Adjustable LED Spotlight



Data sheet - Page 4



Photometrics

Photometric files are included in the design pack which can be downloaded from the LD51 product page on the website.

Order Codes and Options

Product code	LED colour	Lens angle	Accessories	Finish
LD51 - 350 - 500 - 700	<input type="text"/>	<input type="text"/>	<input type="text"/>	<input type="text"/>

Example: LD51-700 / LW30 / MB / CO / GS / Black

Product codes with output options

1.2W LED 350mA	LD51-350
1.7W LED 500mA	LD51-500
2.4W LED 700mA	LD51-700

LED colour options

LED colour options	Suffix
Extra Warm White (2700K)	/LW27
Warm White (3000K)	/LW30
White (4000K) - on request	/LW40
Cool White (5000K)	/LW50
Blue	/LB
Green	/LG
Red	/LR
Amber	/LA

Beam / lens angle options

12° narrow spot	/NB
31° medium spot	/MB
48° wide spot	/WB
36° x 12° oval beam	/OB

Fixing methods and accessories

Ground spike (250mm as standard)	/GS
Adjustable ground spike	/GSA
Anti glare cowl	/CO
Surface Mount Base	/SMB
Tree strap	/TS

Finish options

Black anodised/ paint finish silver/ white (RAL 9016) / RAL finish
 (please see our finishes guide for bronze and other wet spray finishes)

Use with 350mA, 500mA or 700mA constant current LED drivers

For our complete range of LED drivers please download the data sheet from the downloads section at www.lightgraphix.co.uk

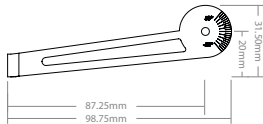
SPECIFICATION - FINO

FL04 (900mm)

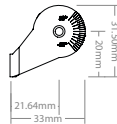
A MICRO COMPACT, HIGH OUTPUT LINEAR LED LUMINAIRE DELIVERING 950 LUMENS PER METER



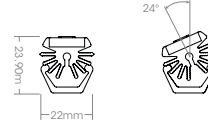
Long Bracket



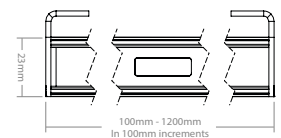
Short Bracket



Clip Bracket



Lengths



PRODUCT FEATURES

Simple minimalist design, solid construction: Incredibly small and beautifully designed to blend seamlessly within the architectural environment.

Broad Choice as standard, with broad range of colours and optics: Silver and black finishes with a wide range of colour temperatures. Driver options allowing control the light wherever and however you require.

Optics: Uncollimated.

Materials and finish: Custom made, high quality aluminium extrusion.

Installation and mounting: Surface or wall mounted on adjustable bracket.

Application: Suitable for flood lighting on building façades and surroundings, and highlighting objects in the public realm. They are suitable for outdoor applications with IP67 protection and for ambient environments up to 50°C.

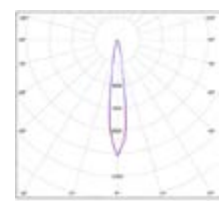
Drivers: Switched, Dali and DMX drivers are available.

Specification text: To specify state: IP67 Surface Mounted Adjustable LED linear luminaire with simple minimalist design. Solid construction from custom made aluminium extrusion. Delivered Lumen package in the region of 1100 lumens (1200mm) with uncollimated optic binned to 2 step MacAdam Ellipses with colour temperature of 2700K/3000K/4200K CRI>80. Lifetime of 50,000 hours @ L70 Ta 50°C. FINO.

IP67 - FINO LIGHT SOURCE INFO

PRODUCT	LENGTH	CRI	COLOUR TEMP (K)	LUMINAIRE LUMEN OUTPUT (lm)	LUMINAIRE LUMENS PER CIRCUIT WATT (lm/CW)	POWER CONSUMPTION, INCLUDING 85% EFFICIENT DRIVER (W)	LIFETIME L70, BASED ON TM-21	COLOUR CONSISTENCY
FINO	L04	80	2700	348	29.7	11.7	>50,000 HOURS	2 STEP MACADAM ELLIPSE
		80	3000	372	31.8	11.7		
		80	4200	384	32.8	11.7		

POLAR PLOT



Based on 3000K, narrow optics, 1213mm, SB & 0° tilt.

BUILD YOUR PRODUCT

PRODUCT	LENGTH/OUTPUT		FINISH		COLOUR TEMP		ACCESSORIES		PROTECTION	
	Length	Output	Finish	Code	Temp	Temp	Bracket	Code	IP	IK
FINO	100mm	90	ANODISED ALUMINIUM SILVER	AS	80CRI 2700°K	-827	LONG BRACKET	LB	IP67	67
	400mm	380	ANODISED ALUMINIUM BLACK	ABK	80CRI 3000°K	-830	SHORT BRACKET	SB		
	800mm	700			80CRI 4200°K	-842	CLIP BRACKET	CB		
	1200mm	1100			RGB	-RGB				
	available in 100mm increments									
FINO	L01	90	AS			-827	LB			67

FINO DRIVER OPTIONS

DRIVER OPTIONS									CIRCUIT BREAKER OPTIONS (Drivers per breaker)							
PROTOCOL TYPE	ENGINE TYPE	OUTPUT	LENGTH	SAP CODE	SAP DESCRIPTION	NUMBER OF PRODUCTS PER DRIVER	MAX WATTS	CURRENT mA	B10	B13	B16	B20	C10	C13	C16	C20
NON-DIM	SC	N/A	400	21100103	DRIVER 1900/B/700/SWT/None/IP20	1	33W	700mA	30	39	48	60	50	65	80	100
			800													
			1200													
1-10V	SC	SC	400	21100106	DRIVER 1900/B/700/1-10/Solo/IP20	1	33W	700mA	30	39	48	60	50	65	80	100
			800													
			1200													
PHASE	SC	SC	400	21904338	DRIVER 1900/K/700/PHA/SOLO/IP20	1	32W	700mA	31	39	50	62	54	66	85	104
			800													
			1200													
DALI	SC	SC	400	21100108	DRIVER 1900/A/700/DALI/Solo/IP20	1	30W	700mA	28	36	45	56	28	36	45	56
			800	21100109	DRIVER 1900/C/700/DALI/Solo/IP20	1	30W		30	39	48	60	50	65	80	100
			1200													
	RGB	RGB	400	21903603	DRIVER 1900/E/350/DALI/RGB/IP20	1	100W	350mA	5	6	8	10	8	10	13	16
			800			1										
			1200			1										
DMX	SC	SC	400	21100112	DRIVER 1900/E/350/DMX/Multi/IP20	1	100W	700mA	5	6	8	10	8	10	13	16
			800													
			1200													
	RGB	RGB	400	21100098	DRIVER 1900/E/350/DMX/Multi/IP20	1	50W	350mA	14	18	22	28	14	18	22	28
			800													
			1200													

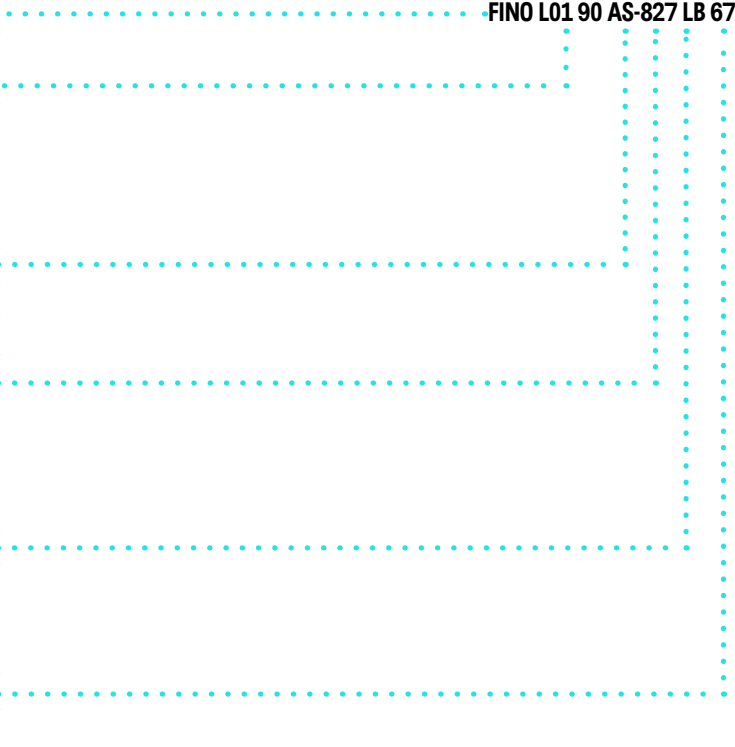


PRODUCT BUILDER

PRODUCT CODE EXAMPLE

FINO L01 90 AS-827 LB 67

PRODUCT NAME	
FINO	FINO
LENGTH	
100mm 90	L01 90
400mm 380	L04 380
800mm 700	L08 700
1200mm 1100	L12 1100
FINISH	
ANODISED ALUMINIMUM SILVER	AS
ANODISED ALUMINIUM BLACK	ABK
COLOUR TEMP	
2700K	-827
3000K	-830
4200K	-842
RGB	-RGB
ACCESSORIES	
LONG BRACKET	LB
SHORT BRACKET	SB
CLIP BRACKET	CB
PROTECTION	
IP67	67

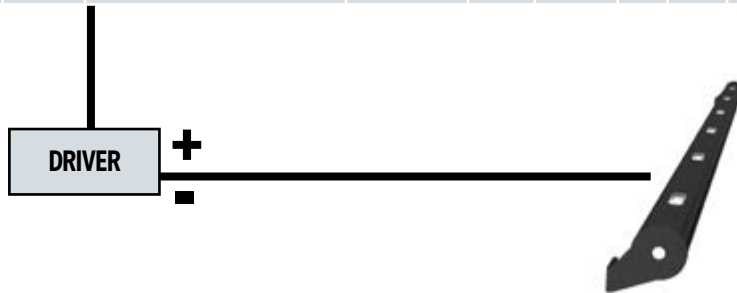


HOW TO BUY FINO

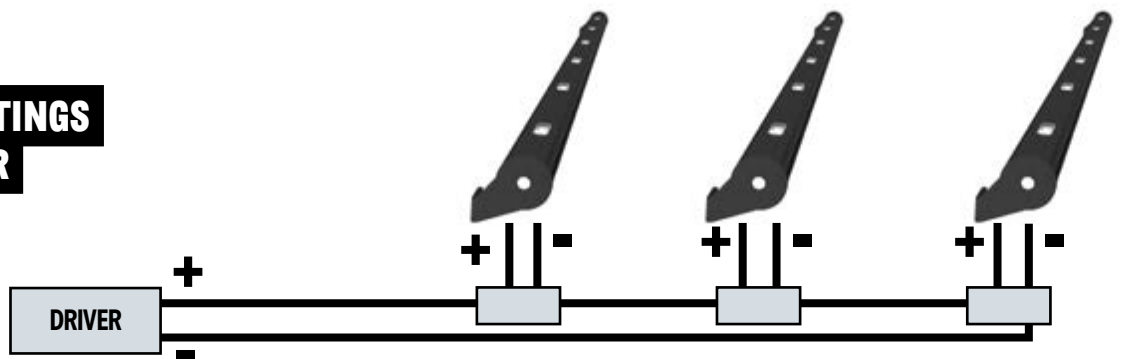
Select driver dependant on dimming capabilities, length and quantity of FINO.

DRIVER OPTIONS									CIRCUIT BREAKER OPTIONS (Drivers per breaker)							
PROTOCOL TYPE	ENGINE TYPE	OUTPUT	LENGTH	SAP CODE	SAP DESCRIPTION	NUMBER OF PRODUCTS PER DRIVER	MAX WATTS	CURRENT mA	B10	B13	B16	B20	C10	C13	C16	C20
NON-DIM	SC	N/A	400	21100103	DRIVER 1900/B/700/SWT/None/IP20	1	33W	700mA	30	39	48	60	50	65	80	100
			800													
			1200													
1-10V	SC	SC	400	21100106	DRIVER 1900/B/700/1-10/Solo/IP20	1	33W	700mA	30	39	48	60	50	65	80	100
			800													
			1200													
PHASE	SC	SC	400	21904338	DRIVER 1900/K/700/PHA/SOLO/IP20	1	32W	700mA	31	39	50	62	54	66	85	104
			800													
			1200													
DALI	SC	SC	400	21100108	DRIVER 1900/A/700/DALI/Solo/IP20	1	30W	700mA	28	36	45	56	28	36	45	56
			800	21100109	DRIVER 1900/C/700/DALI/Solo/IP20	1	30W		30	39	48	60	50	65	80	100
			1200													
	RGB	RGB	400	21903603	DRIVER 1900/E/350/DALI/RGB/IP20	1	100W	350mA	5	6	8	10	8	10	13	16
			800													
			1200													
DMX	SC	SC	400	21100112	DRIVER 1900/E/350/DMX/Multi/IP20	1	100W	700mA	5	6	8	10	8	10	13	16
			800													
			1200													
	RGB	RGB	400	21100098	DRIVER 1900/E/350/DMX/Multi/IP20	1	50W	350mA	14	18	22	28	14	18	22	28
			800													
			1200													

ONE DRIVER TO ONE FITTING

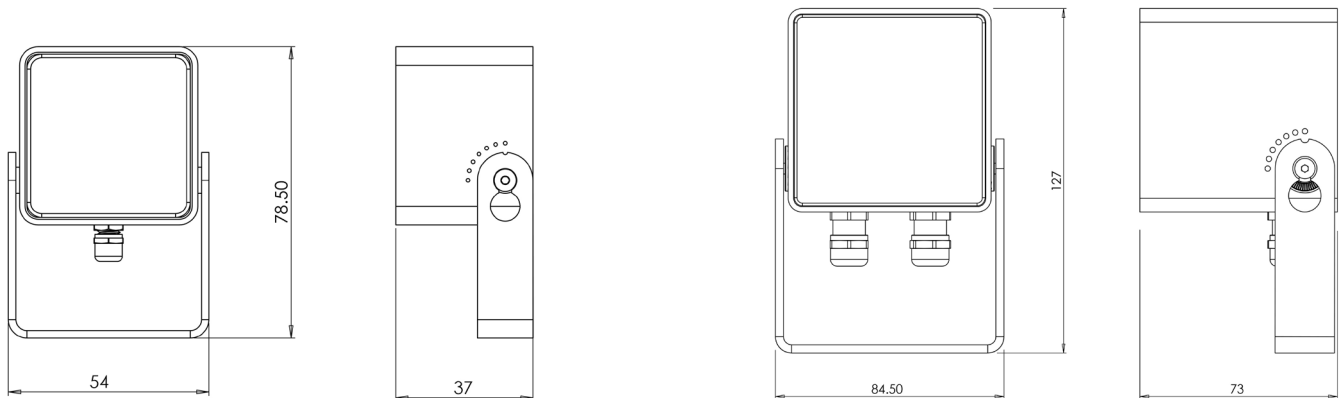


MULTIPLE FITTINGS TO ONE DRIVER



SPECIFICATION - PLAZA S3x, S7x

POCKET SIZED AND MINIATURE SURFACE MOUNTED ARCHITECTURAL FLOODLIGHTS THAT DELIVER 320 OR 700 LUMENS



PRODUCT FEATURES

Simple minimalist design, solid construction: Incredibly small and beautifully designed to blend seamlessly within the architectural environment. Plaza S3x and Plaza S7x are constructed with 6063 grade aluminium and finished in a specialist corrosion resistant powder coat paint, to ensure the long life integrity of the product.

Clean Beam Design (CBD) with wide optic choices: The optics and internal detailing of the luminaire have been designed to ensure outstanding control of the beam angle, and the cleanliness of the overall lit effect, without stray light or unpleasant imaging. We have a multitude of optics from super narrow to flood, plus multiple colour temperature options.

Deep recessed Single Source LED with integral snoot to minimise glare: The 320 and 700 lumen single chip LED is positioned 15mm on the Plaza S3x and 30mm on the Plaza S7x from the front of the luminaire to hide it from view. The matt black integral snoot aids in hiding the source from view to ensure the visual comfort of the luminaire.

Broad Choice as standard, with broad range of colours and optics: Black, white and RAL colours are available, along with a wide range of beam angles and driver options allowing you to position and control the light wherever and however you require.

Materials and finish: Grade 6063 Aluminium housing. Powder coat black and white. RAL colours are available upon request.

Installation and mounting: Surface or wall mounted on adjustable bracket. Ground spike and tree strap accessories available. Can be adjusted on site by +90/-120 degrees. Plaza S3x is individually pre wired. Plaza S7x features an internal junction box for through wiring.

Application: Suitable for flood lighting on building façades and surroundings, and highlighting objects in the public realm. They are suitable for outdoor applications with IP67 protection and for ambient environments up to 50°C.

Drivers: Switched, Dali and DMX drivers are available, capable of powering up to 4 Plaza S3x and 4 Plaza S7x luminaires.

Optics:
PLAZA S3x - Narrow = 15°
 Medium = 22°
 Flood = 35°
 Linear = 46° x 11°

PLAZA S7x - Super Narrow = 10°
 Narrow = 13°
 Medium = 29°
 Flood = 36°

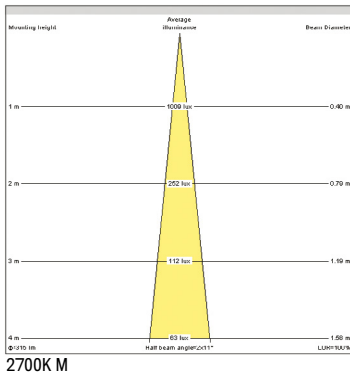
Specification Text PLAZA S3x, S7x

To specify state: IP67 Surface Mounted Adjustable LED Spotlight with simple minimalist design. Deep recessed single LED with integral snoot with CBD to ensure minimal glare and light spill. Solid construction from 6063 grade aluminium with Black and White powder coat paint finish. Delivered Lumen package in the region of 700 lumens for Plaza S7x. 320 lumens for Plaza S3x with optic choice of super narrow (S7x), narrow, medium, flood, and linear (S3x). Single source LED binned to 2 step MacAdam Ellipses with colour temperature of 2700K/3000K/4000K and CRI>80. Lifetime of 50,000 hours @ L70 Ta 50°C. Plaza S3x and Plaza S7x acdc.

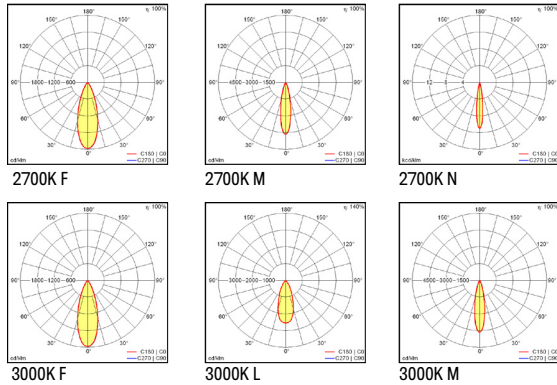
IP67 - PLAZA S3x LIGHT SOURCE INFO

ENGINE TYPE	CRI	OPTIC	COLOUR TEMP (K)	LUMINAIRE LUMEN OUTPUT (lm)	LUMINAIRE LUMENS PER CIRCUIT WATT (lm/cw)	POWER CONSUMPTION, INCLUDING 85% EFFICIENT DRIVER (W)	LIFETIME L70, BASED ON TM-21	COLOUR CONSISTENCY
PLAZA S3x	80	NARROW	2700	337	74.9	4.5	>50,000 HOURS	2 STEP MACADAM ELLIPSE
	80		3000	376	83.6	4.5		
	80		4000	433	96.2	4.5		

CONE DIAGRAM



POLAR PLOT



BUILD YOUR PRODUCT

PRODUCT		LIGHT ENGINE		OPTICS		FINISH		CABLE		PROTECTION	
PLAZA S3x 320	PLAZA S3x 320	80CRI 2700K	-827	NARROW 15°	N	WHITE	WH	2M FLYING LEAD	2M	IP67	67
		80CRI 3000K	-830	MEDIUM 22°	M	BLACK	BK				
		80CRI 4000K	-840	FLOOD 35°	F	RAL	RAL				
				LINEAR HORIZONTAL 46°x11°	LH						
				LINEAR VERTICAL 11°x46°	LV						
PLAZA S3x 320		-827		N		WH		2M		67	

PLAZA S3x EXTRAS

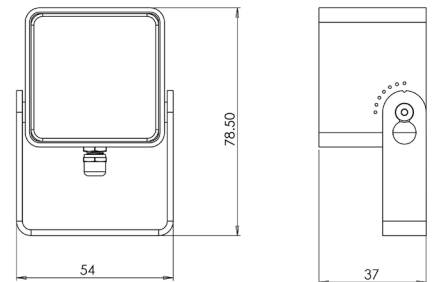


GROUND SPIKE
21100170



TREE STRAP
21903362

DIMENSIONS



FREQUENTLY SPECIFIED

PRODUCT DESCRIPTION	CODE
PLAZA S3x 320-827 N WH 2M 67	21013580
PLAZA S3x 320-827 M WH 2M 67	21013582
PLAZA S3x 320-827 F WH 2M 67	21013584

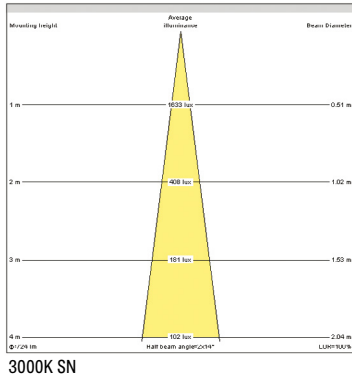
PRODUCT DESCRIPTION	CODE
PLAZA S3x 320-830 N WH 2M 67	21013590
PLAZA S3x 320-830 M WH 2M 67	21013592
PLAZA S3x 320-830 F WH 2M 67	21013594

	DRIVER	CODE
SW	DRIVER 1900/B/350/SWT/NONE/IP20	2110088
DALI	DRIVER 1900/E/350/DALI/MULTI/IP20	21100096
DMX	DRIVER 1900/E100/350/DMX/MULTI/IP20	21903532

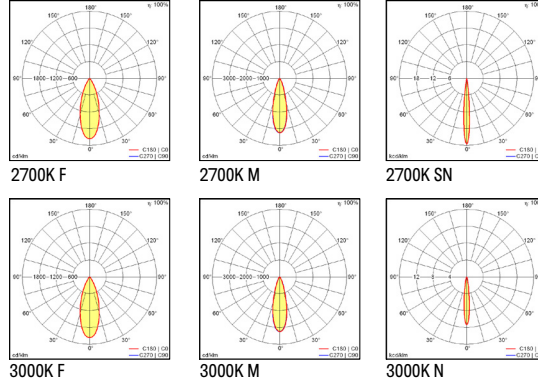
IP67 - PLAZA S7x LIGHT SOURCE INFO

ENGINE TYPE	CRI	OPTIC	COLOUR TEMP (K)	LUMINAIRE LUMEN OUTPUT (lm)	LUMINAIRE LUMENS PER CIRCUIT WATT (lm/cW)	POWER CONSUMPTION, INCLUDING 85% EFFICIENT DRIVER (W)	LIFETIME L70, BASED ON TM-21	COLOUR CONSISTENCY
S7x	80	FLOOD	2700	728	81.0	9	>50,000 HOURS	2 STEP MACADAM ELLIPSE
	80		3000	772	85.8	9		
	80		4000	945	105.0	9		

CONE DIAGRAM



POLAR PLOT



BUILD YOUR PRODUCT

PRODUCT		LIGHT ENGINE		OPTICS		FINISH		CABLE		PROTECTION	
PLAZA S7x 700	PLAZA S7x 700	80CRI 2700K	-827	SUPER NARROW 10°	SN	WHITE	WH	STD NONE	STD	IP67	67
		80CRI 3000K	-830	NARROW 13°	N	BLACK	BK				
		80CRI 4000K	-840	MEDIUM 29°	M	RAL	RAL				
				FLOOD 36°	F						
PLAZA S7x 700		-827		SN		WH		STD		67	

PLAZA S7x EXTRAS

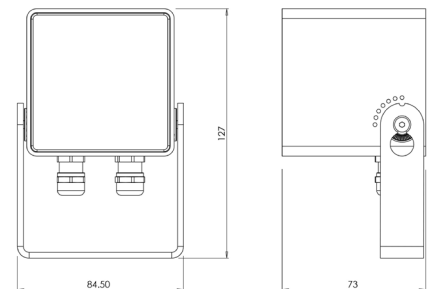


GROUND SPIKE
21100170



TREE STRAP
21903362

DIMENSIONS



FREQUENTLY SPECIFIED

PRODUCT DESCRIPTION	CODE
PLAZA S7x 700-827 N WH STD 67	211013558
PLAZA S7x 700-827 M WH STD 67	211013560
PLAZA S7x 700-827 SN WH STD 67	211013556

PRODUCT DESCRIPTION	CODE
PLAZA S7x 700-830 N WH STD 67	211013566
PLAZA S7x 700-830 M WH STD 67	211013568
PLAZA S7x 700-830 SN WH STD 67	211013564

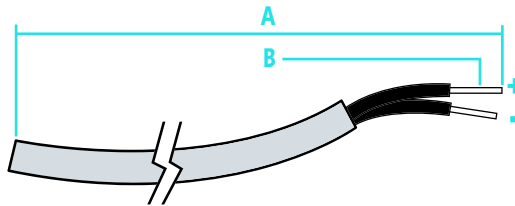
	DRIVER	CODE
SW	DRIVER 1900/B/700/SWT/NONE/IP20	21100103
DALI	DRIVER 1900/E/700/DALI/MULTI/IP20	21100110
DMX	DRIVER 1900/E/700/DMX/MULTI/IP20	21100112

DRIVER OPTIONS

DRIVER OPTIONS							CIRCUIT BREAKER OPTIONS (Drivers per breaker)							
PROTOCOL TYPE	PRODUCT	SAP DRIVER PART CODE		NUMBER OF PRODUCT PER DRIVER	MAX WATTS	CURRENT mA	B10	B13	B16	B20	C10	C13	C16	C20
NON - DIM	PLAZA S3x	21100088	DRIVER 1900/B/350/SWT/None/IP20	1-4	33W	350mA	30	39	48	60	50	65	80	100
	PLAZA S7x	21100103	DRIVER 1900/B/700/SWT/None/IP20	1-4	33W	700mA	30	39	48	60	50	65	80	100
	PLAZA S3x	21100155	DRIVER 1900/B/350/SWT/None/IP65	1-4	33W	350mA	30	39	48	60	50	65	80	100
	PLAZA S7x	21100161	DRIVER 1900/B/700/SWT/None/IP65	1-4	33W	700mA	30	39	48	60	50	65	80	100
DALI	PLAZA S3x	21100096	DRIVER 1900/E/350/DALI/Multi/IP20	4 x 1-4	100W	350mA	5	6	8	10	8	10	13	16
	PLAZA S7x	21100110	DRIVER 1900/E/700/DALI/Multi/IP20	4 x 1-3	100W	700mA	5	6	8	10	8	10	13	16
	PLAZA S3x	21903243	DRIVER 1900/E/350/DALI/Multi/IP65	4 x 1-4	100W	350mA	5	6	8	10	8	10	13	16
	PLAZA S7x	21902940	DRIVER 1900/E/700/DALI/Multi/IP65	4 x 1-3	100W	700mA	5	6	8	10	8	10	13	16
DMX	PLAZA S3x	21903532	DRIVER 1900/E100/350/DMX/Multi/IP20	4 x 1-4	100W	350mA	5	6	8	10	8	10	13	16
		21100099	DRIVER 1900/G/350/DMX/Multi/IP20	32 x 1-4	600W	350mA	N/A	N/A	N/A	N/A	N/A	N/A	3	N/A
	PLAZA S7x	21100112	DRIVER 1900/E/700/DMX/Multi/IP20	4 x 1-3	100W	700mA	5	6	8	10	8	10	13	16
		21100113	DRIVER 1900/G/700/DMX/Multi/IP20	32 x 1-2	600W	700mA	N/A	N/A	N/A	N/A	N/A	N/A	3	N/A
	PLAZA S3x	21903242	DRIVER 1900/E100/350/DMX/Multi/IP65	4 x 1-4	100W	350mA	5	6	8	10	8	10	13	16
	PLAZA S7x	21100165	DRIVER 1900/E/700/DMX/Multi/IP65	4 x 1-3	100W	700mA	5	6	8	10	8	10	13	16

WIRING: PLAZA S3x

PLAZA S3x	A	B	CHANNEL 1	
			+	-
	2000mm	0.22mm	RED	BLUE



WIRING PLAZA S7x

Contractor must wire with cable between 3-6mm OD (outer diameter).
2 core cable with 0.5mm-0.75mm CSA.



PRODUCT BUILDER



GROUND SPIKE



TREE STRAP



ACCESSORIES	
GROUND SPIKE	21100170 SPIKE 1796
TREE STRAP	21903362 TREE STRAP

PRODUCT CODE EXAMPLE
PLAZA S3x 320-827 N WH 2M 67

PRODUCT NAME	
PLAZA S3x 320	PLAZA S3x 320
LIGHT ENGINE	
80CRI 2700K	-827
80CRI 3000K	-830
80CRI 4000K	-840
OPTIC	
NARROW	N
MEDIUM	M
FLOOD	F
LINEAR HORIZONTAL	LH
LINEAR VERTICAL	LV
FINISH	
WHITE	WH
BLACK	BK
RAL COLOUR*	RAL
CABLE	
2M FLYING LEAD	2M
IP RATING - IP67	
	67

* Minimum order quantities apply.

PRODUCT CODE EXAMPLE
PLAZA S7x 700-827 SN WH STD 67

PRODUCT NAME	
PLAZA S7x 700	PLAZA S7x 700
LIGHT ENGINE	
80CRI 2700K	-827
80CRI 3000K	-830
80CRI 4000K	-840
OPTIC	
SUPER NARROW	SN
NARROW	N
MEDIUM	M
FLOOD	F
FINISH	
WHITE	WH
BLACK	BK
RAL COLOUR*	RAL
CABLE	
STANDARD NONE	STD
IP RATING - IP67	
	67