

Low Temperature Hot Water General Notes:

- LTHW heating pipework shall be carried out in 'press fit' mild steel.
- Drain cocks shall be provided at all low points and equal tee air bottles at high points in accordance with BS 2879. Automatic air vents will be permitted within plant areas only. Inaccessible air vents shall be extended in 15mm copper pipework to low level within nearest accessible plant or store area complete with needle valves.
- All equipment shall be installed in accordance with relevant manufacturers recommendations and accepted good practice. Valve and union connections shall be provided to isolate all equipment.
- Flushing points and drain cocks are to be installed at strategic locations in accordance with the flushing strategy.
- All LTHW heating systems shall be commissioned by an approved reputable commissioning specialist to achieve the flow rates as detailed and shall be witnessed by the Engineer.
- Refer to heating schematic for provision of isolation and balancing valves. Contractor shall allow for isolation valves where the LTHW F&R pipework rises between floors.
- Ensure all LTHW flow and return pipework hole diameters within floor joists are not greater than 0.25 times the depth of a joist or 65mm and located between 0.25 and 0.4 times the span of the support.
- Where pipework runs up through the stairwells the contractor shall include to box in the pipework, where new radiators are shown on plans the contract shall include to box out the radiators.

Reference	Area Served / Location	Manufacturer	Model	Type	Width (mm)	Height (mm)	Ambient Temperature (°C)	Room Heat Loss (kW)	Rad Output (kW)	Flow Rate (kg/s)	TRV & LSV
RAD 0/01	115 GENERAL TEACHING	SENSOTHERM	SAFERAD LST - MODEL C	SEP2	1400	950	21	-	2.578	0.0307	✓
RAD 0/01	115 GENERAL TEACHING	SENSOTHERM	SAFERAD LST - MODEL C	SEP2	1400	950	21	-	2.578	0.0307	✓
RAD 0/01	115 GENERAL TEACHING	SENSOTHERM	SAFERAD LST - MODEL C	SEP2	1400	950	21	-	2.578	0.0307	✓
RAD 0/04	113 GIRLS TOILET	SENSOTHERM	SAFERAD LST - MODEL C	SEP1	1600	750	15	-	1.17	0.0139	✓
RAD 0/05	111 BOYS TOILET	SENSOTHERM	SAFERAD LST - MODEL C	SEP1	1600	750	15	-	1.17	0.0139	✓
RAD 0/06	110 CIRCULATION	SENSOTHERM	SAFERAD LST - MODEL C	SEP2	1100	1050	19	-	2.011	0.0239	✓
RAD 0/07	102 STAFF ADMIN	SENSOTHERM	PANEL RADIATOR	DPSC	1100	700	21	-	2.27	0.0270	✓
RAD 0/08	102 STAFF ADMIN	SENSOTHERM	PANEL RADIATOR	DPSC	1100	700	21	-	2.27	0.0270	✓
RAD 0/09	104 CIRCULATION	SENSOTHERM	SAFERAD LST - MODEL C	SEP2	1000	1050	19	-	2.011	0.0239	✓
RAD 0/10	106 GIRLS TOILET	SENSOTHERM	SAFERAD LST - MODEL C	SEP2	1800	650	19	-	2.015	0.0240	✓
RAD 0/11	105 DIS WC	SENSOTHERM	SAFERAD LST - MODEL C	SEP2	800	650	19	-	0.755	0.0090	✓

- Notes
- Radiators selected on 92/71°C LTHW F&R.
 - *RAD EXC is the existing column radiator.

Notes

Bailey Partnership is the trading name of Bailey Partnership (Consultants) LLP, a limited liability partnership registered in England and Wales No. OC420278.

This drawing is copyright and owned by Bailey Partnership (Consultants) LLP, and is for use on this project and site only unless contractually stated otherwise.

DO NOT SCALE from this drawing (printed or electronic versions) unless otherwise stated. All dimensions are given in millimeters and shall be checked on site by the contractors.

All other design team elements, where indicated, have been imported from the consultant's drawings and reference should be made to the individual consultant's drawings for exact setting out, size and type of component.

Discrepancies and / or ambiguities within this drawing, between it and information given elsewhere, must be reported immediately to the engineers for clarification before proceeding.

All works are to be carried out in accordance with the latest British Standards and Codes of Practice unless specifically directed otherwise in the specification.

Responsibility for the reproduction of this drawing in paper form, or if issued in electronic format, lies with the recipient to check that all information has been replicated in full and is correct when compared to the original paper or electronic image. Graphical representations of equipment on this drawing have been co-ordinated, but are approximations only. Please refer to the Specifications and / or details for actual sizes and / or specific contractor construction information.

Ordnance Survey Paper Map Copying License number: 40006119

This original document is issued for the purpose indicated below and contains information of confidential nature. Further copies and circulation will be strictly in accordance with the confidentiality agreement under the contract.

© Bailey Partnership (Consultants) LLP. This document is issued for the party which commissioned it and for specific purposes connected with the captioned project only. It should not be relied upon by any other party or used for any other purposes. We accept no responsibility for the consequences of this document being relied upon by any other party, or being used for any other purpose, or containing any error or omission which is due to an error or omission in data supplied to us by others.

SAFETY, HEALTH AND ENVIRONMENTAL INFORMATION

Refer to the relevant Construction (Design and Management) documentation where applicable.

It is assumed that all works on this drawing will be carried out by a competent contractor, working where appropriate to an approved method statement.

Project Notes

The Contractor shall ascertain the nature of the site, access thereto and all local conditions and restrictions likely to affect the installation. No claim will be considered on the grounds of the lack of site knowledge.

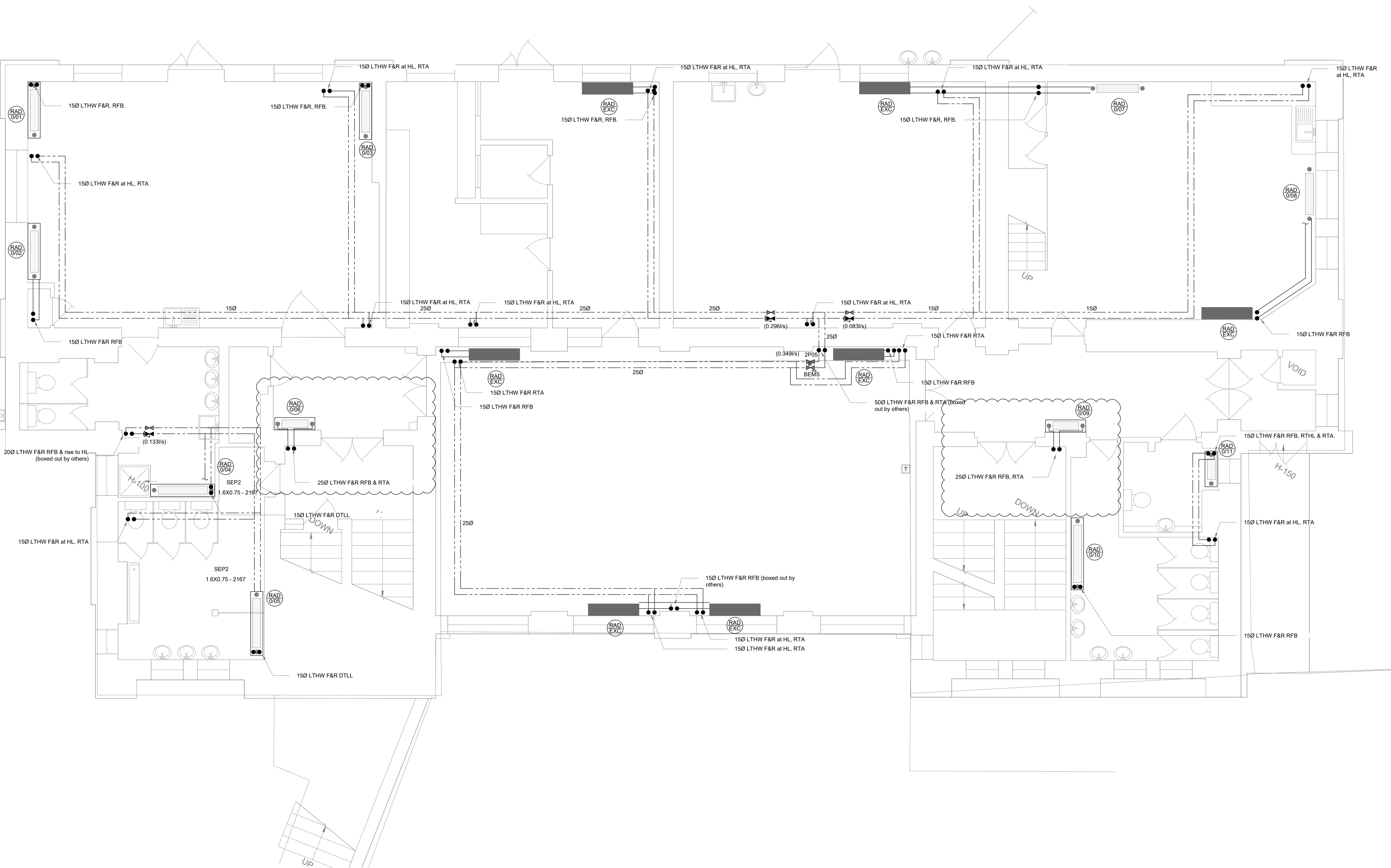
The Contractor shall be responsible for the final coordination of all new and existing services, with the building structure, architecture and fixed furniture and equipment.

The Contractor shall allow for all required changes in height and direction not identified on the drawing and the final setting out of all plant, equipment and services shall be agreed on site with the Engineer.

The Contractor shall be responsible for any temporary access or lifting equipment required to carry out the works.

Legend:

- Services run in Floor Void
- Services at Low Level
- - - Services at High Level
- - - Services Within Ceiling Void
- T Zonal Thermostat linked to BEMS
- Isolation Valve / Ball Valve
- Commissioning Valve Set
- 2-Port Control Valve
- Pressure Independent Control Valve
- Expansion Bellow (by Specialist)
- DTLL Drop to Low Level
- RTA Rise to Above
- RFB Rise From Below
- DTB Drop to Below



T1	Pipework Alterations	JC/JS/BV	24.01.19
T0	Tender Issue	JC/UC/BV	Dec'18
Rev	Description	By / Chk'd / App'd Date	



Client
London Borough of Camden

Project
New End Primary School

Drawing Title
Mechanical Services Drawing
Proposed Heating Layout
Ground Floor

Purpose of Issue		Status	
Tender Issue		D2	
Project No.	Scale @ A1	Date	
30202	1/50	Dec'18	
Revision	Drawn By	Check By	Approved By
T1	JC	JS	BV

A1 Drawing Identifier
Project: Origin Zone Level Type Role Class Number
NEP BPC XX G0 DR M 560 0003

www.baileypartnership.co.uk