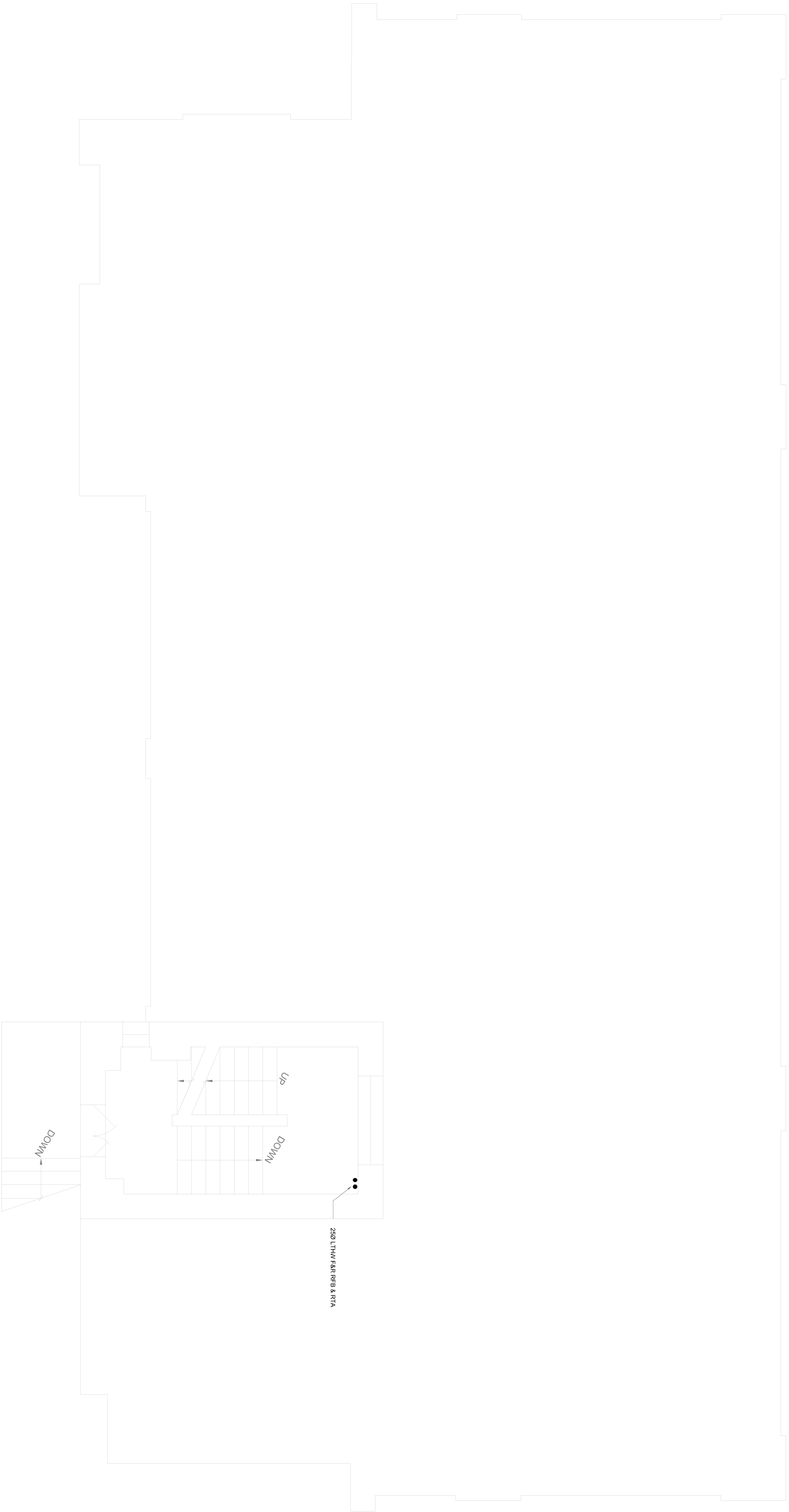


Low Temperature Hot Water General Notes:

1. LTHW heating pipework shall be carried out in zones of mild steel.
2. Drain cocks shall be provided at all low points and equal level air bottles at high points in accordance with BS 2879. Automatic air vents will be permitted within plant areas only. Inaccessible air vents shall be extended in 15mm copper pipework to above the ceiling level and accessible from above via a ceiling hatch with a 15mm diameter access panel.
3. All pipework shall be supported on hangers and brackets. Hangers and brackets shall be installed in accordance with BS 5956. Valves and union connections shall be provided to isolate all equipment.
4. All LTHW heating systems shall be commissioned at strategic locations in accordance with the flushing strategy.
5. All pipework shall be supported on hangers and brackets. Hangers and brackets shall be installed in accordance with BS 5956. Refer to heating schematic for provision of isolation and balancing valves. Contractor shall allow for isolation valves where the LTHW F&S pipework rises between floors.
6. Contractor shall provide AAV and drain valves at all high and low points accordingly.
7. Contractor shall provide AAV and drain valves at all high and low points accordingly.
8. Contractor shall provide AAV and drain valves at all high and low points accordingly.



Notes

Bailey Partnership is the trading name of Bailey Partnership (Consultants) LLP, a limited liability partnership registered in England and Wales No. OC2420728. This drawing is copyright and owned by Bailey Partnership (Consultants) LLP and is for use on the project and shall only be used for the project and shall not be reproduced or used in any other project without the written consent of Bailey Partnership (Consultants) LLP. DO NOT SCALE from this drawing (printed or electronic version) unless otherwise stated. All dimensions are given in millimeters and shall be checked on site by the contractor. All dimensions are given in millimeters and shall be checked on site by the contractor. All dimensions are given in millimeters and shall be checked on site by the contractor. All dimensions are given in millimeters and shall be checked on site by the contractor.

SAFETY, HEALTH AND ENVIRONMENTAL INFORMATION
The Contractor shall ensure that all work on this drawing will be carried out by a competent contractor, working where appropriate to an approved method statement.

Project Notes

The Contractor shall ascertain the nature of the site, access thereto and all local conditions and restrictions likely to affect the installation. No claim will be considered on the grounds of the site or its surroundings. The Contractor shall be responsible for the full completion of all new and existing services and equipment in accordance with the specification and shall be responsible for the full completion of all new and existing services and equipment in accordance with the specification and shall be responsible for the full completion of all new and existing services and equipment in accordance with the specification.

Legend:

- Services (up to Floor Void)
- Services at Low Level
- Services at High Level
- Services Within Ceiling Void
- Zonal Thermostat linked to BEMS
- ⌋ Isolation Valve / Ball Valve
- ⌋ Commissioning Valve Set
- ⌋ 2-Port Control Valve
- ⌋ Pressure Independent Control Valve
- ⌋ Expansion Below (by Specialist)
- DTLL Drop to Low Level
- RTA Rise to Above
- RFB Rise From Below
- DTB Drop to Below

To: **Tender Issue** Date: **Dec'18**
By: **CH/KG / Aspd**
Rev Description

Client: **London Borough of Camden**
Project: **New End Primary School**

Mechanical Services Drawing
Proposed Heating Layout
Basement Mez Level

Purpose of Issue	Status
Tender Issue	D2
Project No. 30202	Date Dec'18
Scale @ A1	Date Dec'18
Revision T0	Drawn By JC
	Check By JC
	Approved By BV