

Based on information supplied by others
All dimensions are approximate

Do not scale from this drawing

A AA 07/02/19 'Theatre House' sign

Rev Drawn Date Description

'Cat A'

Contract
97-99 Camden High Street
London NW1

Drawing Title
THEATRE HOUSE

Elevation Proposed
South

Corner Window



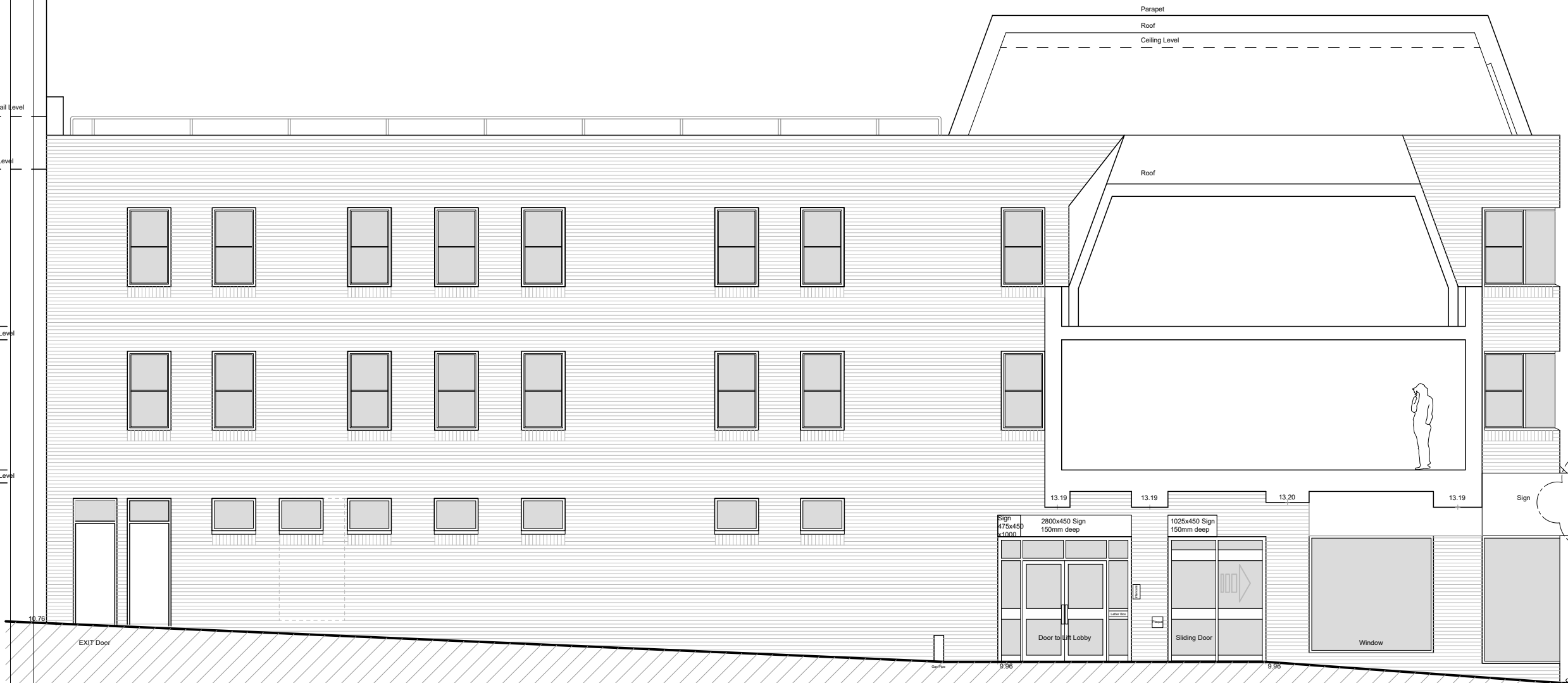
CDS PROJECTS LTD
22 Woodbastwick Road, London SE26 5LH
M 07802 441750

Scales 1/100 (at A3) Date December 2018

Drawn AA Checked

Contract No	Drawing No	Revision
18/07/Li	G/16	A

Adjacent Gable End
Handrail Level
Roof Level
Floor Level
Floor Level



Extend existing window opening down to ground level. Form door frame and install new door with fixed light (security bars).

New Fire Exit door and fixed light to match.

Louvred panel (2550x1350) replaced with high level window (920x675) to match existing. Make good redundant opening, brickwork to match existing.

Replace double doors, laminated glass

Replace sliding door and fixed panel, laminated glass

Laminated glass 'shop' windows

