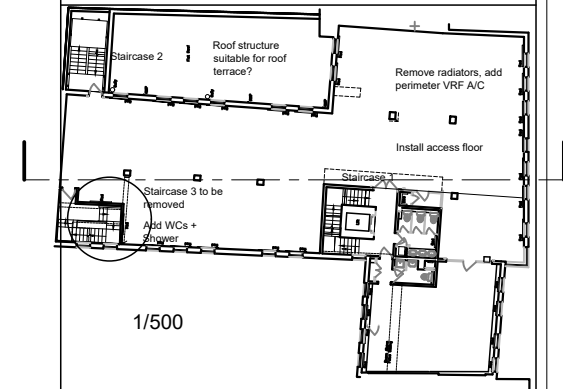


Based on information supplied by others
All dimensions are approximate

Do not scale from this drawing



1/500

A AA 11/02/19 Access floor added to 2nd floor (West)

Rev Drawn Date Description

3 'Cat A'

Contract

97-99 Camden High Street
London NW1

Drawing Title

Proposed
Section



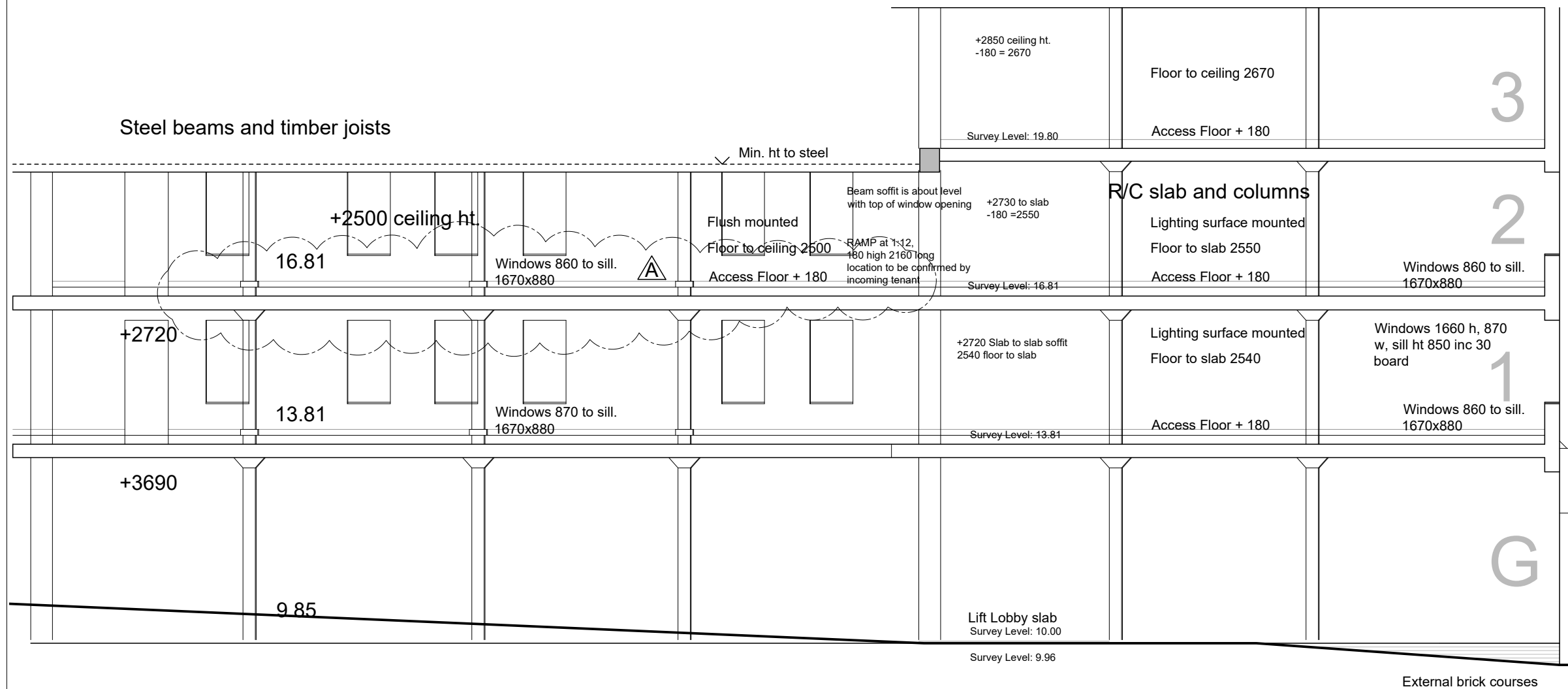
CDS PROJECTS LTD
22 Woodbastwick Road, London SE26 5LH
M 07802 441750

Scales 1/100 (at A3) Date October 2018

Drawn AA Checked

Contract No	Drawing No	Revision
18/07/Li	G/14	A

Steel beams and timber joists



Steel beams and timber joists

Min. ht to steel

+2500 ceiling ht.

16.81

Windows 860 to sill.
1670x880

Flush mounted
Floor to ceiling 2500
Access Floor + 180

Beam soffit is about level with top of window opening
RAMP at 1:12.180 high 2160 long location to be confirmed by incoming tenant

Survey Level: 16.81

R/C slab and columns

Lighting surface mounted
Floor to slab 2550
Access Floor + 180

Windows 860 to sill.
1670x880

2

+2720

13.81

Windows 870 to sill.
1670x880

+2720 Slab to slab soffit
2540 floor to slab

Lighting surface mounted
Floor to slab 2540

Windows 1660 h, 870 w, sill ht 850 inc 30 board

Windows 860 to sill.
1670x880

1

+3690

9.85

Lift Lobby slab
Survey Level: 10.00

Survey Level: 9.96

G

External brick courses