

75 CAMDEN ROAD N.W.
SCALE $\frac{1}{8}$ TO 1 FOOT

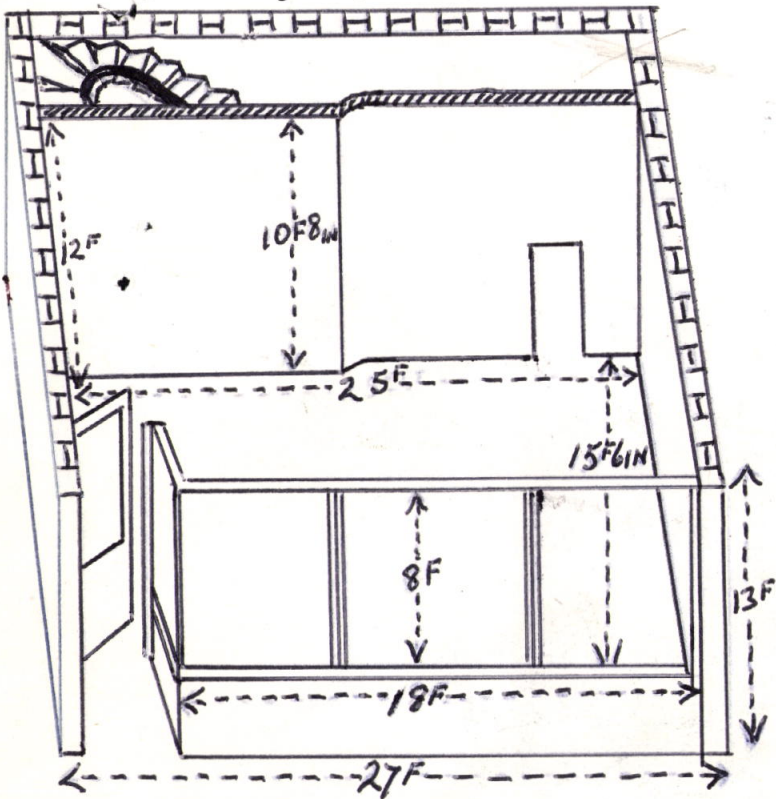
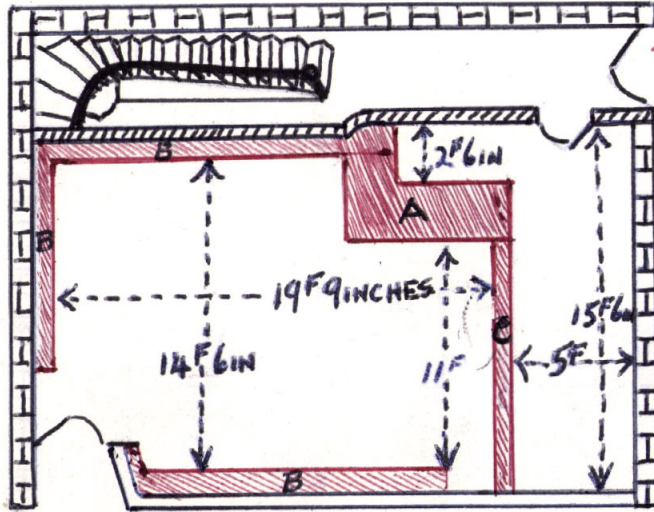
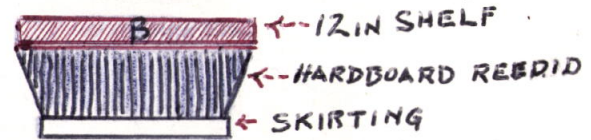
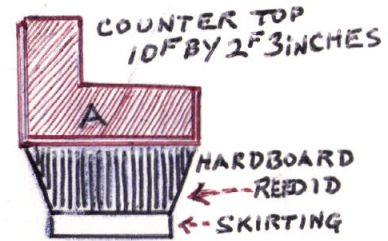


DIAGRAM ABOVE
WALLS 12' BY 25' BY 15'6 INCHES
ALL ROUND, 10'8 INCHES IN HIGH
SHOP FRONT WINDOW
18' LONG 8' HIGH.

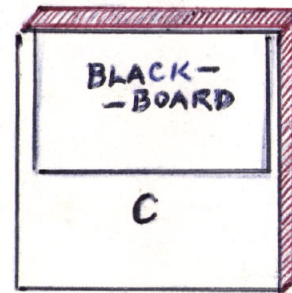
DIAGRAM FOR BETTING
OFFICE



ENTRANCE TO BACK
AND UPPER PART OF
SHOP

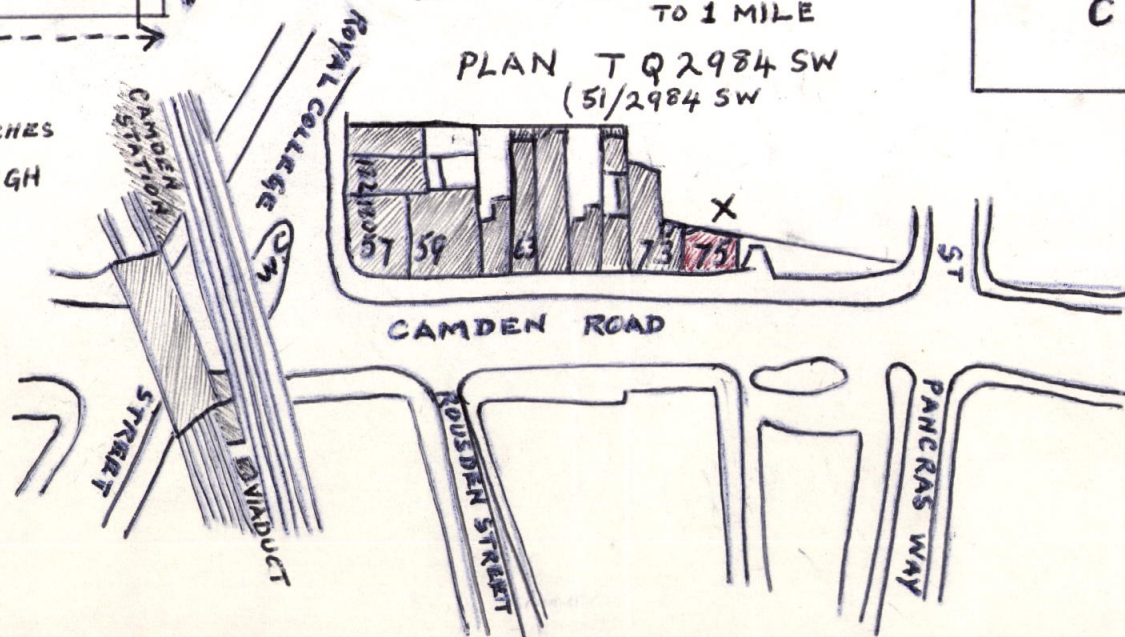


PARTITION BETWEEN
COUNTER AND FRONT
WINDOW OF SHOP



SCALE 1:1250 OR 50-688 INCHES
TO 1 MILE

PLAN T Q 2984 SW
(51/2984 SW)



LONDON COUNTY COUNCIL
14537 30-9-63
ARCHITECT'S REGISTRY