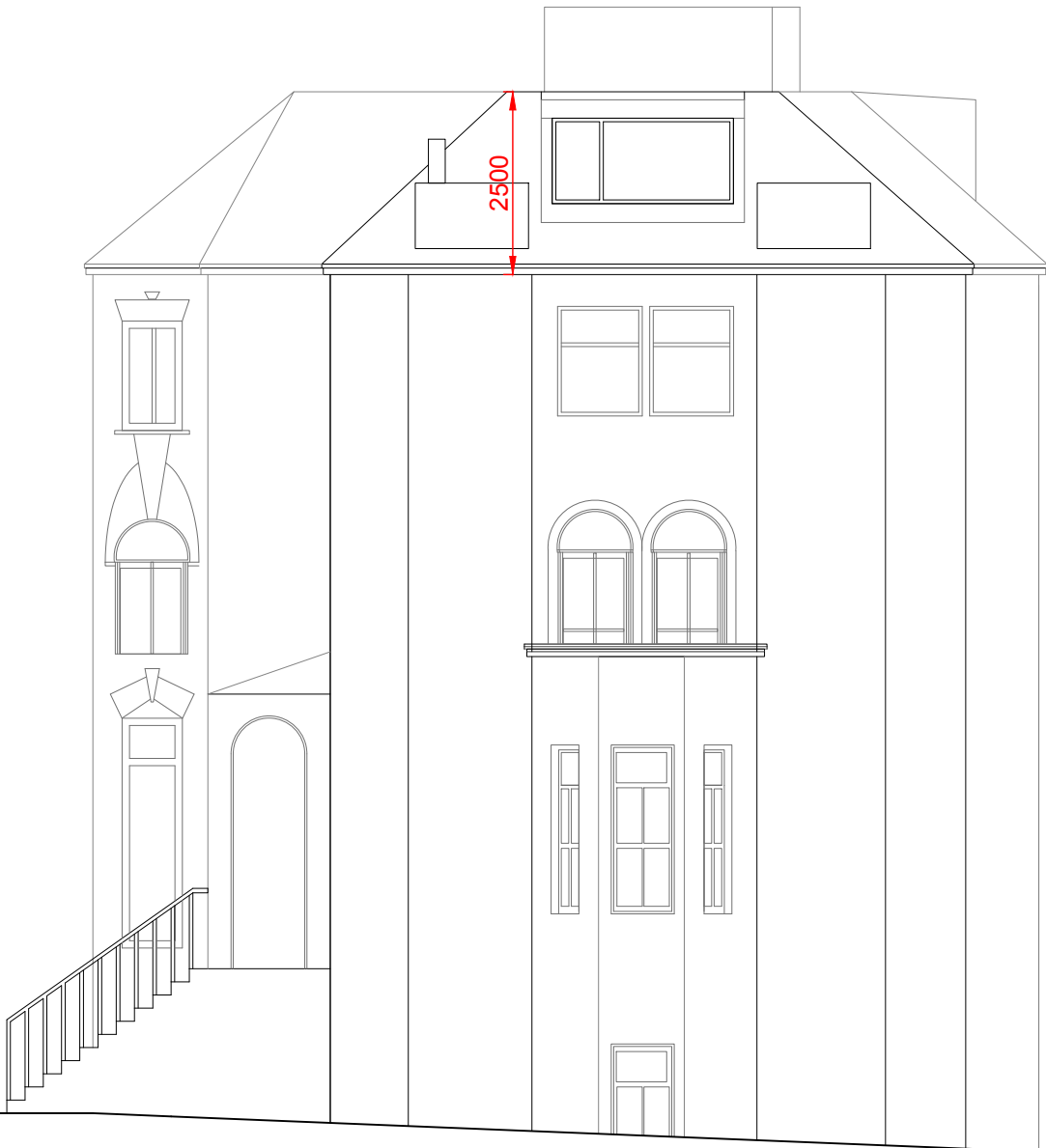


EXISTING WEST ELEVATION



Disclaimer - Use of this Information

UNCONTROLLED INFORMATION

This dwg document is an uncontrolled version issued to enable the recipient to use this information at their own risk. The issuer accepts no liability for any such use. Design development is ongoing and so may affect this dwg uncontrolled information. For controlled information refer to formally issued drawings and documents. USE AT RECIPIENT'S RISK ONLY

It is the duty of the recipients of electronic transmissions to be aware that their system may be corrupted by the opening of any such transmission and that they be satisfied that measures are in place to prevent such an occurrence.

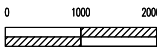
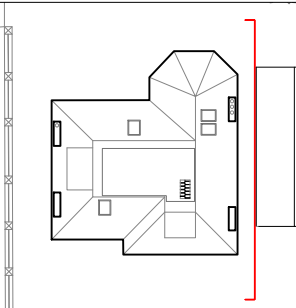
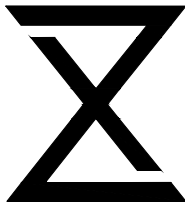
No responsibility or liability whatsoever will be accepted by ZAP if the recipient's computer system is corrupted by information transmitted from ZAP computers and/or for any delays or other losses arising out of or caused by transmission.

Viruses: Although we have taken steps to ensure that this e-mail and attachments are free from any virus, we advise that in keeping with good computing practice the recipient should ensure they are actually virus free.

Confidentiality: This information is intended for the named recipients only and may be confidential. If it has come to you in error you must take no action based on the contents, nor must you copy or show them to anyone; please notify ZAP and highlight the error.

Please note that we work natively in AutoCAD which produces dwg format drawings and we are aware that line styles do not convert correctly between dwg and dgn formats. We therefore cannot guarantee the completeness or accuracy of the information in the issued dwgs files and therefore the issued pdfs should always be used as a reference for the validity and accuracy of this information.

The contents of these drawings have been prepared solely for their use on this project and no other person or organisation should place reliance upon this information.



PLANNING

EXISTING

Work Package	Cost Check	Info/Briefing	Tender	Contract	Construction	Date	Revision	Description	Drawn by	Date	Ref.	Revision	Drawn by	Project	20 Thurlow Road			Project Code	Drawing Number	Rev.
-						08.02.2018	A	Existing West Elevation						Subject	Existing West Elevation 20 Thurlow Rd LONDON NW3 5PP, UK			1802	301	A
														Architects	ZAP Architecture 365 High Street, London, E15 4QZ T: 020 37614996 E: info@zaparchitecture.com			Date	30.01.2019	Scale 1:100 at A3