

Cycle Strategy

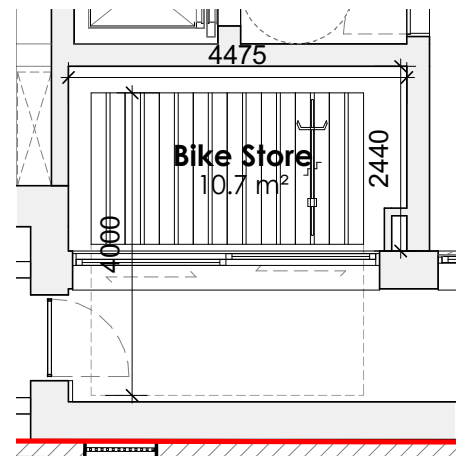
The cycle strategy for the scheme is in accordance with the London Plan Requirements for the use class C3 table 6.3 minimum standards cycle parking for Long Stay:

1 space per one bedroom unit
2 spaces for all other dwelling

Cycle storage has been provided for 8 units (16 spaces) in a secure room at ground floor level and is accessed through the side passageway either via the residential cores or directly from the street. Access to the cycle store will be limited to the residents

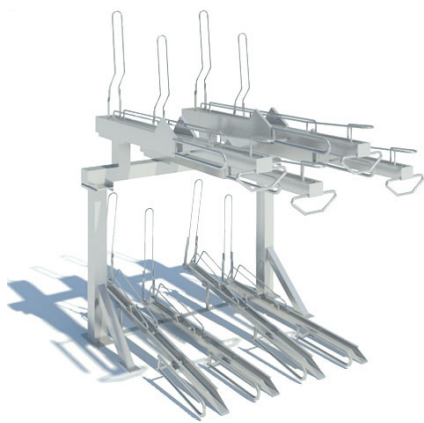
only and controlled by secure key fob. Cycle parking within the cycle stores will be provided by a 'josta' style cycle stacking system with three locking points.

The ground floor maisonette will benefit from a cycle store within the unit demise, which is located at the rear of the ground floor garden and will be capable of storing two bicycles. The Asgard bike box cycle store will be secure and lockable.



Communal bike store dimensions

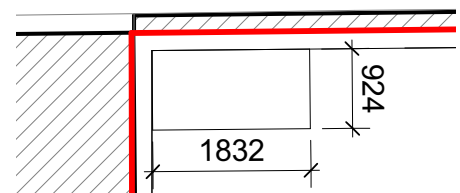
4475mm (W) x 2440mm (D) x 4335mm (H)



Josta bike rack



Asgard Bike box



Ground floor maisonette bike store dimensions

1832mm (W) x 924mm (D) x 1440mm (H)

Below: Ground Floor Plan

