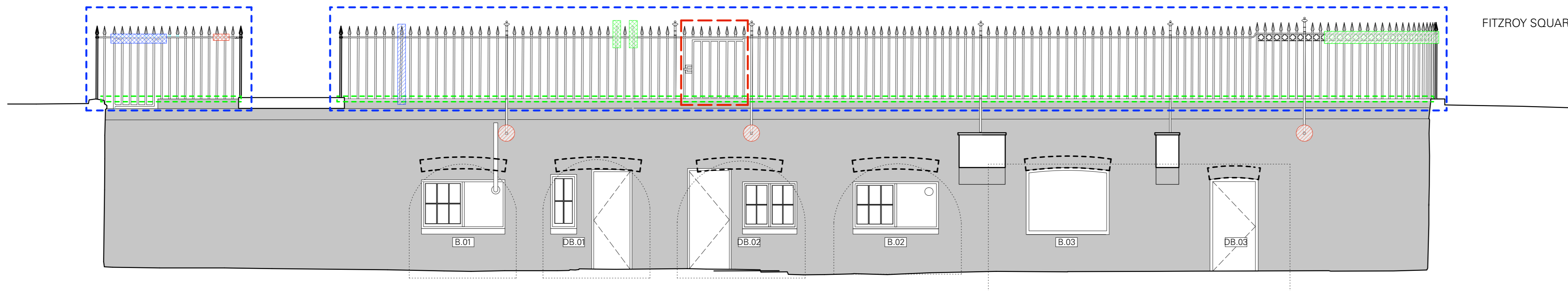


Do not scale working dimensions from this drawing. Read drawings in conjunction with all relevant consultant drawings and specifications. In case of incongruities between information - consult the architect for final decision. Deviations from these drawings shall not be made without first consulting the architect.

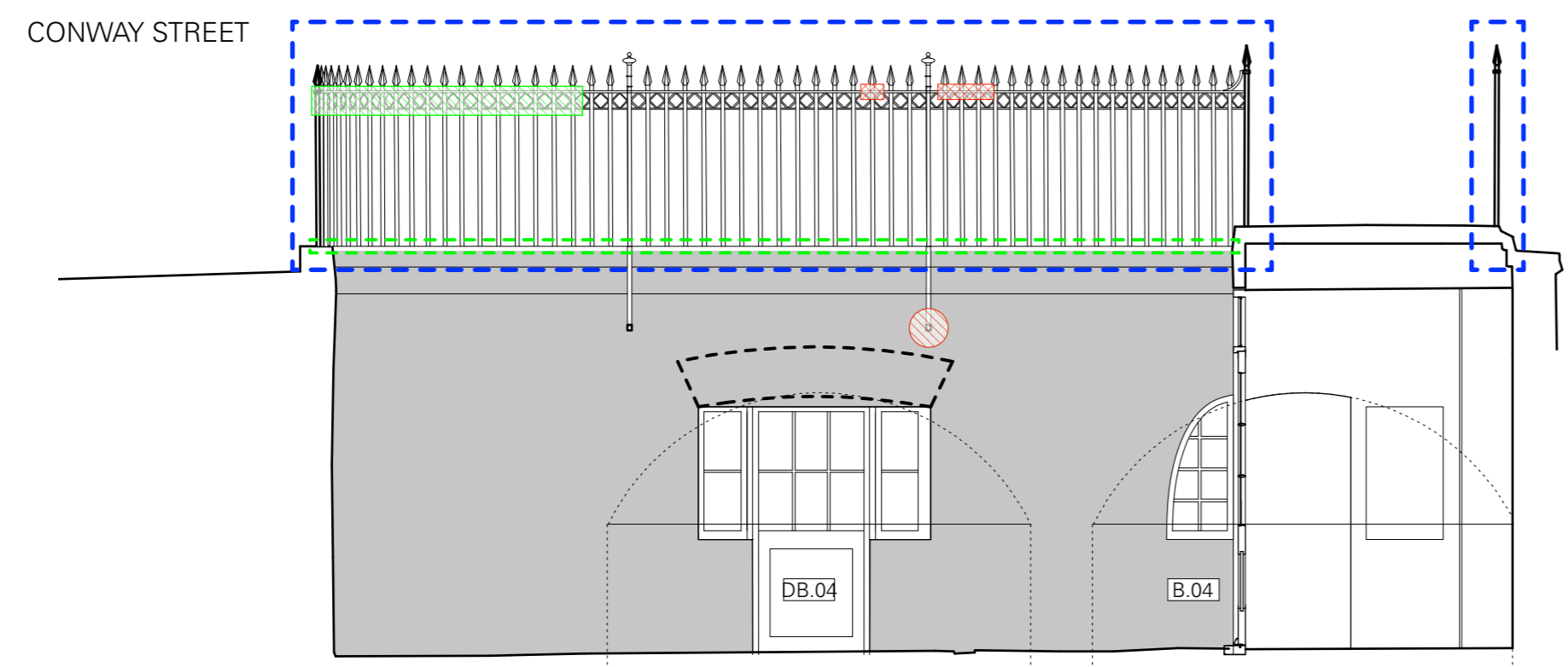
NOTES.

KEY
LIGHTWELL RAILING CONDITION SURVEY

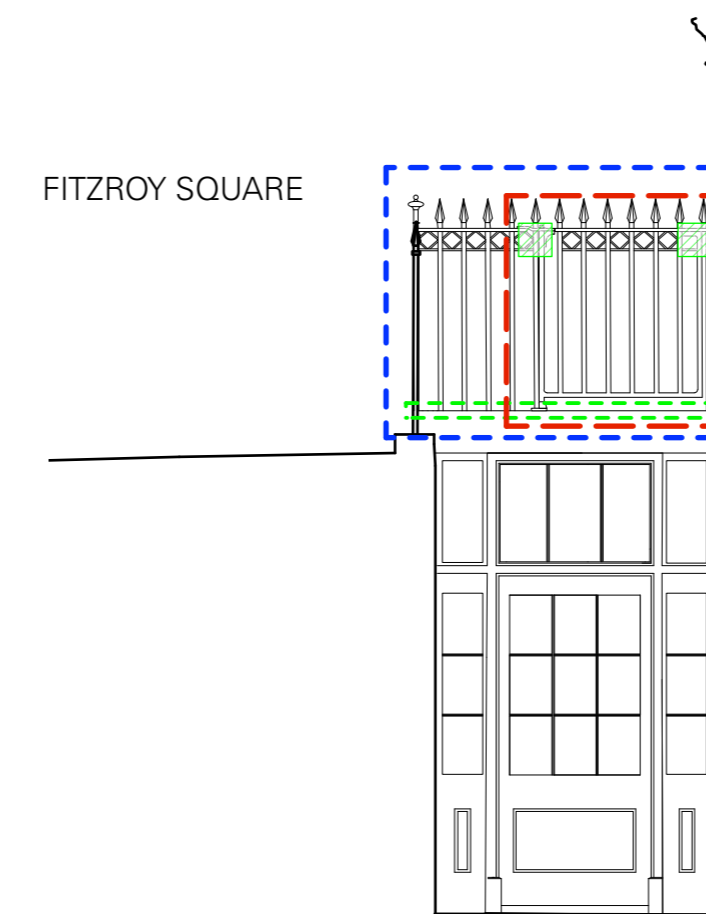
- SPINDLE FOOTING CORROSION
- DIAMOND DETAILING DAMAGED OR MISSING
- RAILING FINIAL HEAD MISSING
- RAIL SURFACE DAMAGE
- DISPLACED RAILINGS
- TOP & MID RAILS DISPLACED
- FIXED SHUT GATE
- WALL PLATE MISSING
- TOP RAIL SPLIT AND JOINED WITH SPLICING BRACKETS



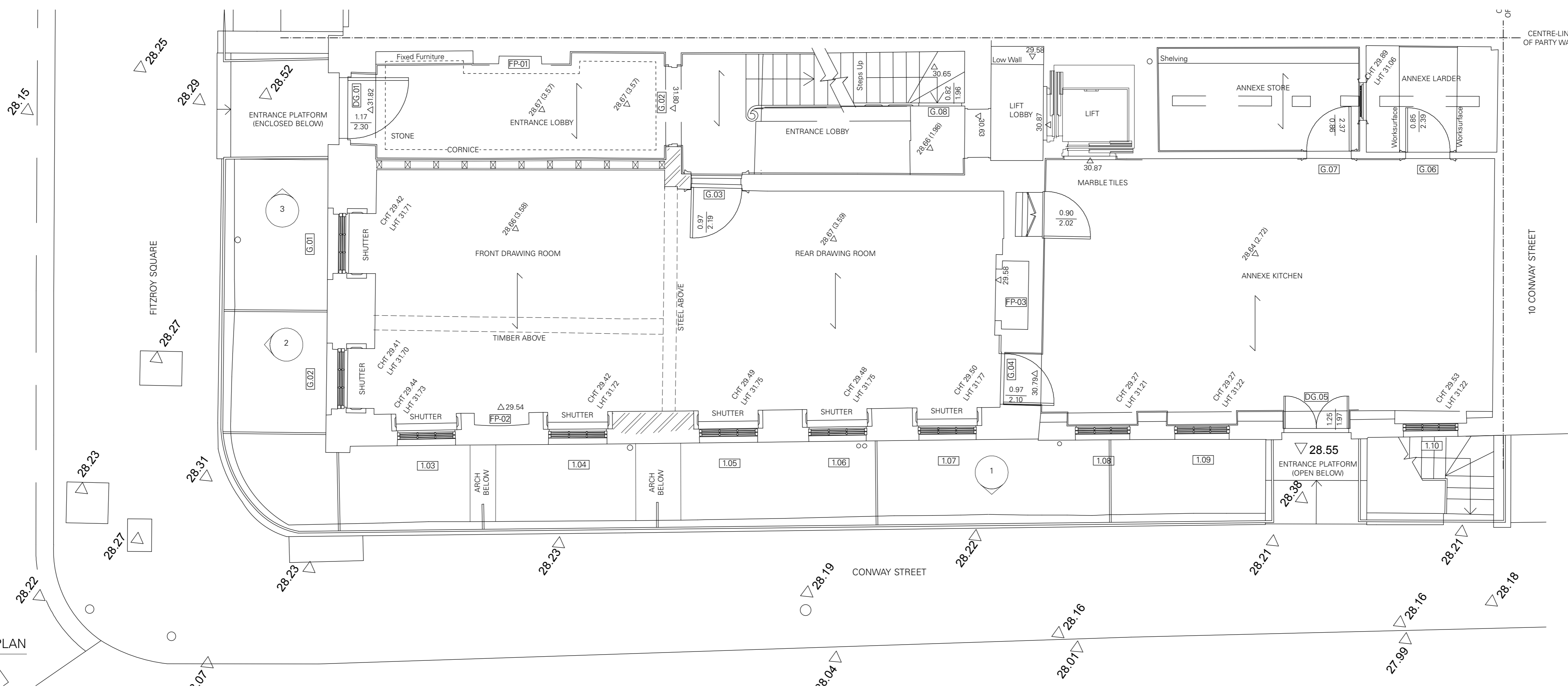
1 EXISTING CONWAY STREET RAILINGS
1:50 @ A1, 1:100 @ A3



2 EXISTING CONWAY STREET RAILINGS
1:50 @ A1, 1:100 @ A3



3 EXISTING FITZROY SQUARE RAILINGS
1:50 @ A1, 1:100 @ A3



4 EXISTING GROUND FLOOR PLAN
1:50 @ A1, 1:100 @ A3

DRAWN BY / REVISION	DATE	NO.
SURVEY		
EXTERNAL CONDITION SURVEY RAILINGS	SCALE: 1:50	
33 FITZROY SQUARE LONDON W1T 6EU	ES024	262
	SHEET NO.	REVISION.