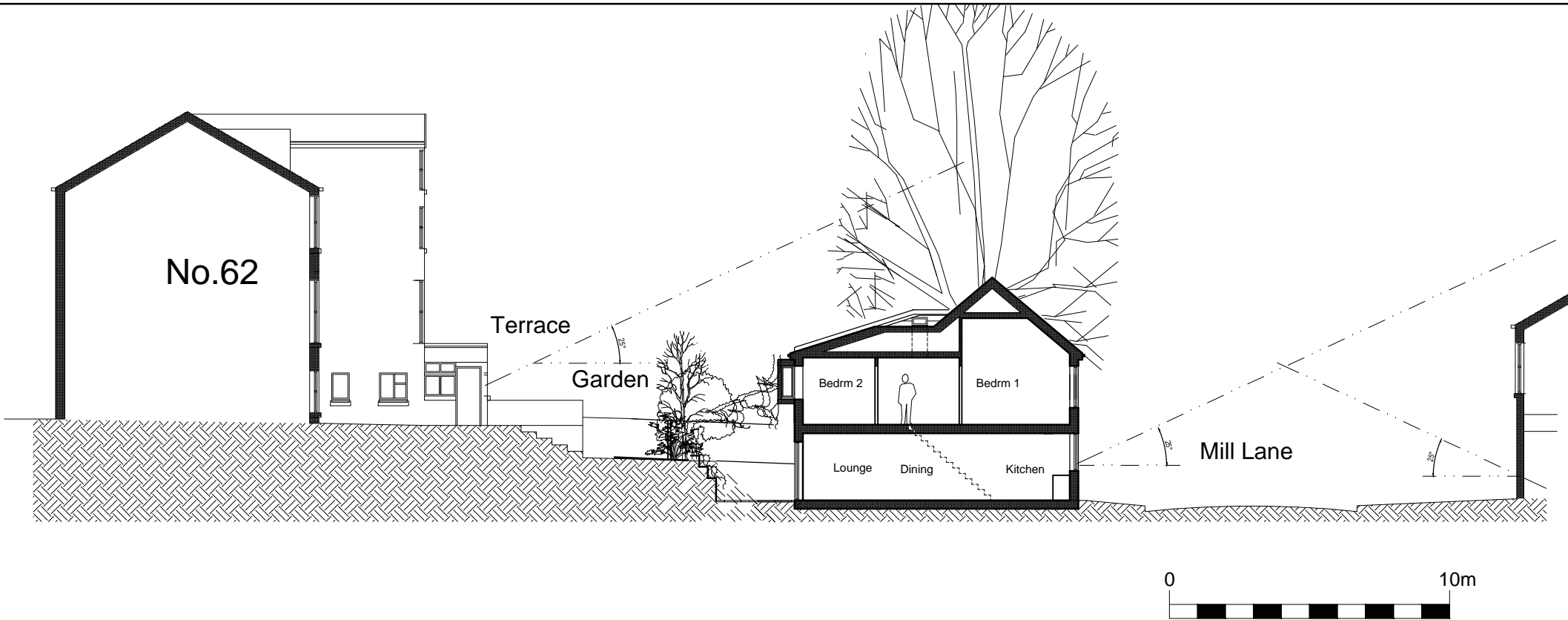


Site Section as Existing



Site Section as Proposed

Planning

NOTES:

REV	AMENDMENTS	BY	DATE
<div><div>BFA</div><div>ARCHITECTS</div></div> <div><div>24a Sedley Taylor Rd</div><div>Cambridge CB2 8PN</div><div>tel: +44 1223 413 064</div><div>leon.w@bfa-ltd.co.uk</div><div>www.bfa-ltd.co.uk</div></div> <div><div>All dimensions to be checked on site. Any discrepancies to be reported to the Architect immediately.</div><div>The drawing is not to be scaled.</div><div>THIS DRAWING IS COPYRIGHT</div></div> <div><div>Drawn By</div><div>BFA</div><div>Checked By</div><div>LNW</div></div> <div><div>Date</div><div>Sept '18</div><div>Scale</div><div>1:100 @ A1</div><div>1:200 @ A3</div></div> <div><div>Drw Title</div><div>Site Section as Existing &amp; Proposed</div></div> <div><div>Project</div><div>Proposed Dwelling at 62 Hillfield Road, West Hampstead London NW6 1QA</div></div> <div><div>Drawing No.</div><div>918-P-04</div><div>Rev</div><div>A</div></div>			