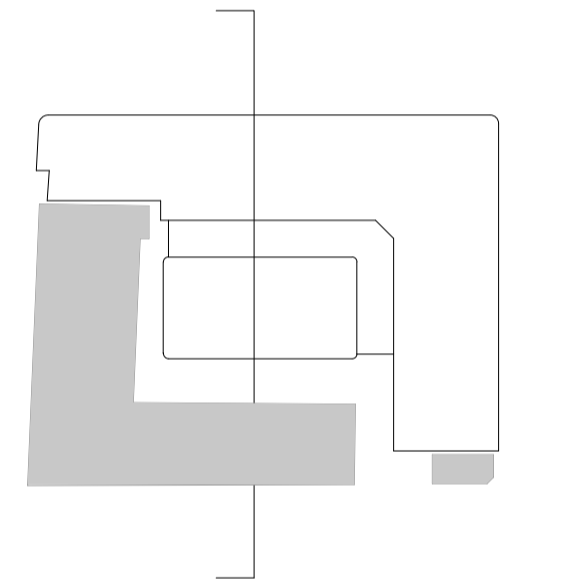


GENERAL NOTES

- G1 Any discrepancies between drawings to be report to the Architect immediately.
- G2 All Levels are above Ordnance Datum (AOD)
 - G2.1 New Levels are shown thus: +12.345
 - G2.2 Existing Levels are shown thus: +12.345
 - G2.3 Retained Existing Levels are shown thus: EX +12.345
- G3 Use figured dimensions only. Scale using scale bar below.
- G4 Refer to Engineers drawings for all structural and services information.
- G5 Clear height (finished floor to finished soffit) is shown thus: 2750
- G6 Setting Out points shown thus: SOP
- G7 Finishes are shown thus: [Finish Symbol]
- G8 Room numbers are shown thus: CX-100-001
- G9 Door (D) & Window (W) references are shown thus: [Door/Window Symbol]
- G10 For tolerances see the Design Drawings and Specifications
- G11 Refer to XXX for T-Sheet references, and to XXX for Architectural Specifications. T-sheet References are shown thus: TWS-01

G12 Copyright. All Rights Reserved.
 This work is copyright and cannot be produced or copied in any form or by any means (graphic, electronic or mechanical including photocopying) without the written permission of the originator. Any license, express or implied, to use this document for any purpose whatsoever is restricted to the terms of the agreement or implied agreement between the originator and the instructing party.

NOTES



PLANNING

Date	Rev	Status
17.10.13	F	Issue 175 For exhibition on 21/23rd exhibition
05.11.13	G	Issue 218 For planning meeting
14.11.13	H	Issue 224 Issued for planning meeting
22.11.13	J	Issue 251 For planning
06.12.13	K	Issue 270 For planning
13.12.13	L	Issue 270 Issued for Planning
28.02.14	M	Issue 370 Revised Planning Drawings
05.03.14	N	Issue 379 Revised Planning for LBC

Scott Tallon Walker Architects

10 Cromwell Place, London SW7 2JN United Kingdom
 Tel: +4 (0)20 7589 4949
 Email: mail@starchitecture.com
 www: www.starchitecture.com

EDWARD WILLIAMS ARCHITECTS

116 Princesdale Road, London, W11 4NH
 email: mail@edwardwilliamsarchitects.com
 www: edwardwilliamsarchitects.com

Client: **University College London Hospitals**

Project: **UCLH Phase 4 & PBT**

Drawing Subject: **Cross Section - Planning Proposed**

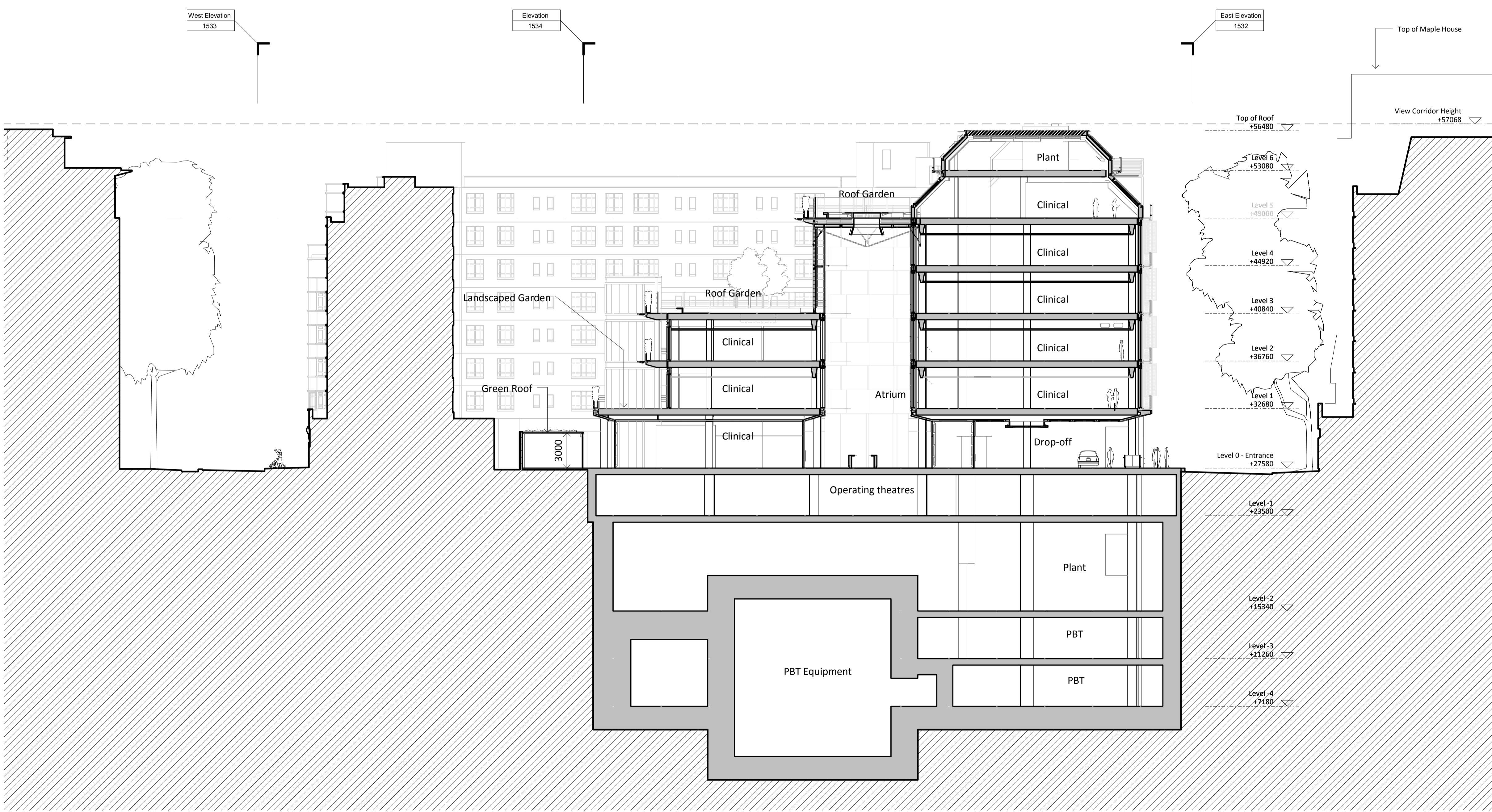
File Reference:
 Scale: **1 : 200 at A1** Date: **06 December 2013**

Drawn By: _____ Checked By: _____

Drawing Status: **Planning**

Project Status: _____

	Sort Code	Drawing No.	Rev
STW Ref	12046-EWA-A2	1540	N
EWA Ref	A/UCLH4	1540	N



UCLH Phase 3 University Street

