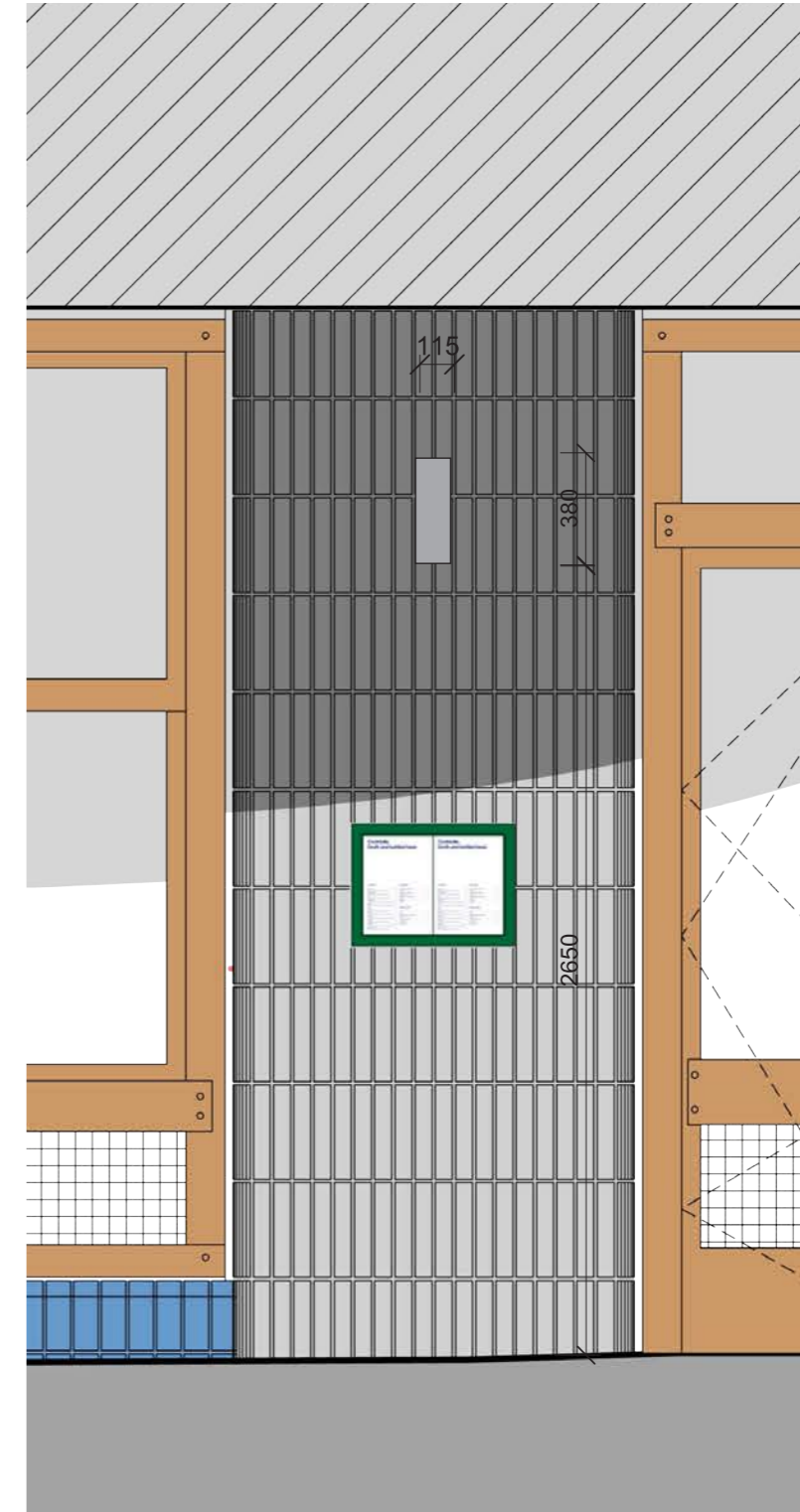
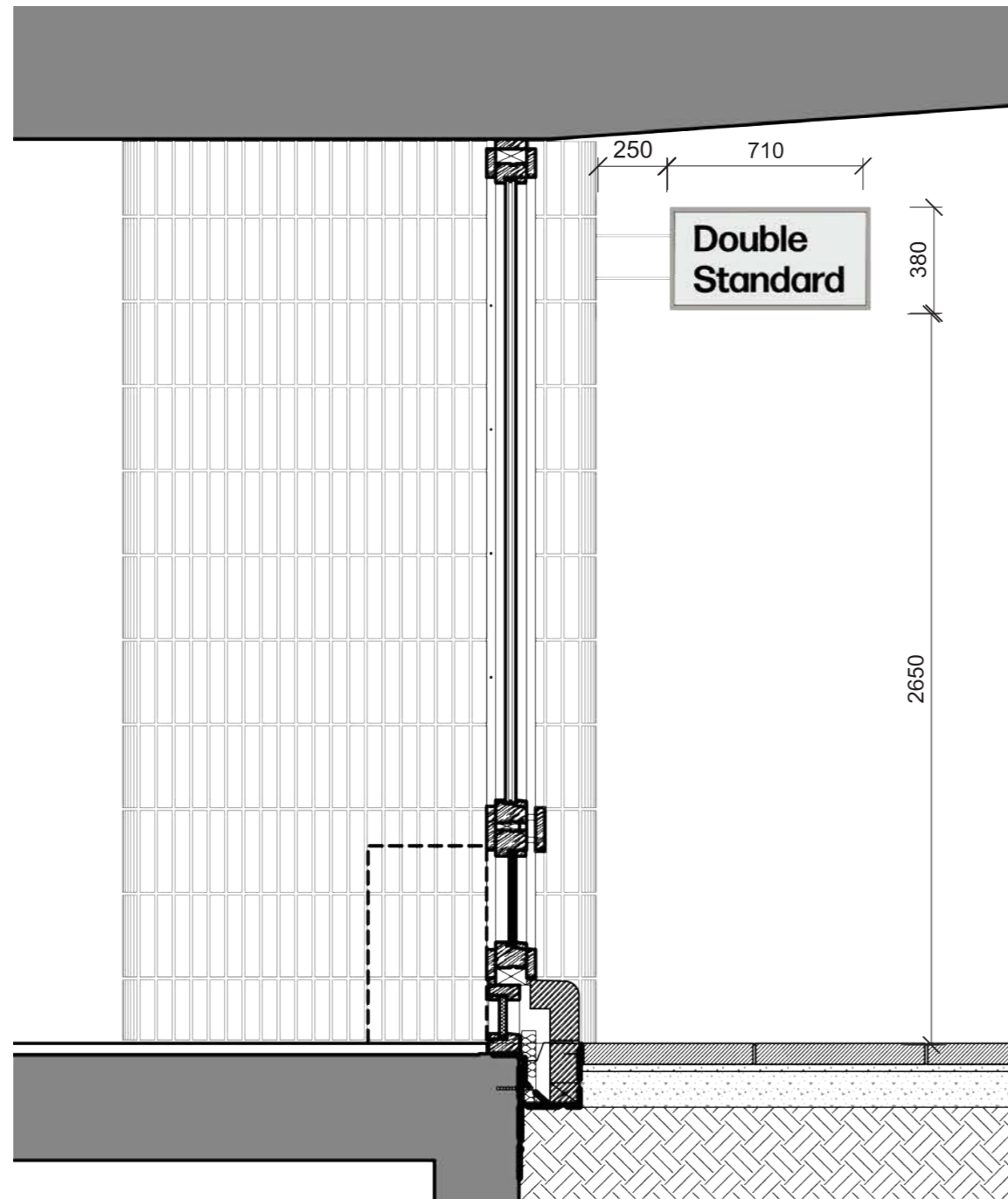


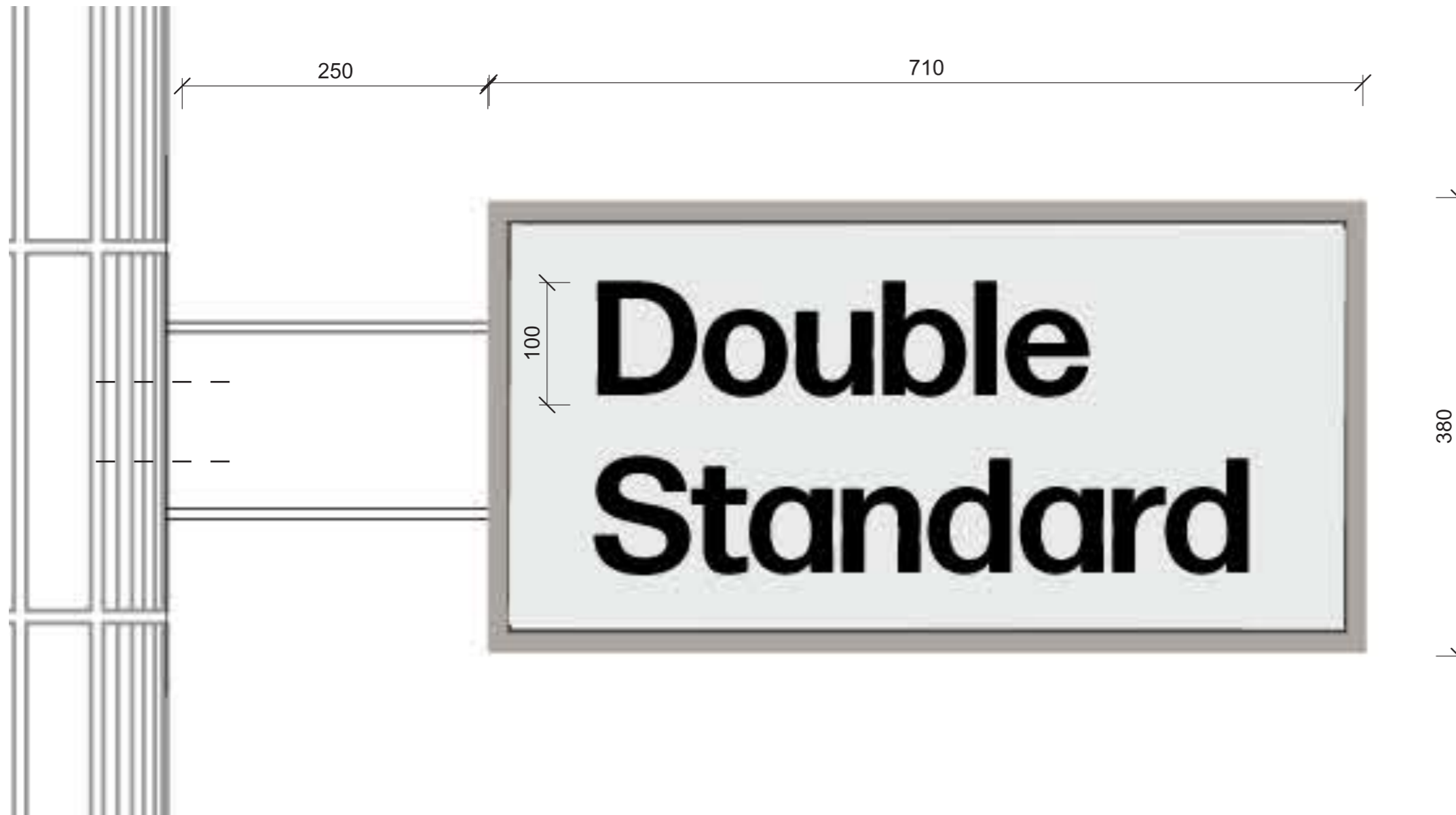
# Wayfinding 'Double Standard' signage

Section



# Wayfinding 'Double Standard' signage

Elevation



## F Signage 'Double Standard'

Projecting sign fixed back to concrete column  
Polished steel frame with acrylic sheet infills.  
The acrylic sheets are internally illuminated  
The steel frame is non illuminated.  
Sign arm screw fixed into masonry facade.

Illuminance details:  
Light type - LED  
Source - Internal  
Output - Static  
Colour - White