

DO NOT SCALE

100  
Millimetres  
0 10

ToP 6.449 m  
▼ Parapet Level  
FFL 6.235 m  
▼ Roof Level (1)

FFL 3.415 m  
▼ 1 Level

FFL 0.000 m  
▼ 0 Level

D

C

B

A

Roof Terrace  
75.9 m<sup>2</sup>

A-1F-126  
Open Office  
53.4 m<sup>2</sup>

A-0F-110  
Nursery  
95.3 m<sup>2</sup>

A-0F-113  
Kitchen  
19.3 m<sup>2</sup>

A-0F-115  
Kitchen St  
5.1 m<sup>2</sup>

1  
0601  
Exiting Section A  
1 : 50

SAFETY, HEALTH AND ENVIRONMENTAL INFORMATION

In addition to the hazards/risks normally associated with the types of work detailed on this drawing, note the following:

CONSTRUCTION

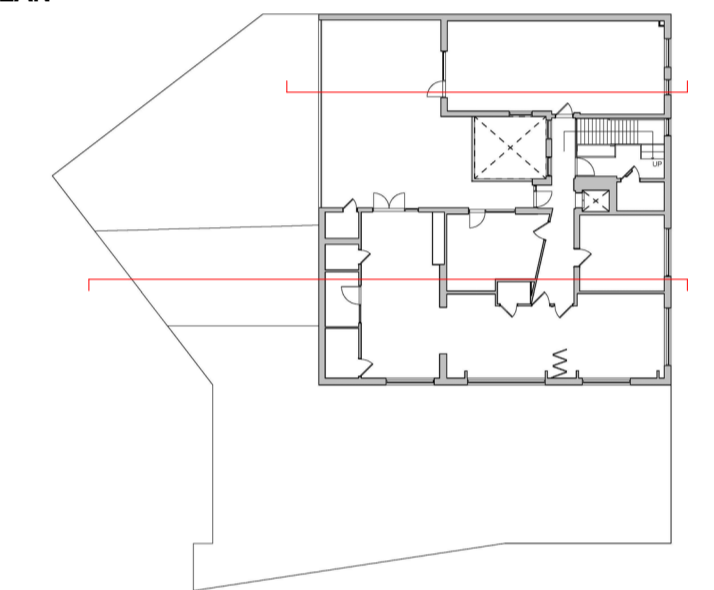
All dimensions to be checked on site by contractor prior to installation.

MAINTENANCE/CLEANING

DECOMMISSIONING/DEMOLITION

It is assumed that all works will be carried out by a competent contractor working, where appropriate, to an approved method statement

KEY PLAN



P1	11/01/19	Planning Submission	KIA	JW	ML
P0	14/12/18	Stage 3 Submission	KIA	AS	JW
Rev.	Date	Description	By	Chk'd	App'd

Drawing Status **FOR PLANNING** Submittal **S2**

**ATKINS**  
Member of the SNC-Lavalin Group  
Atkins Ltd  
Euston Tower  
285 Euston Road  
London  
NW1 3AT  
Tel: +44 (0)20 7121 2000  
Copyright © Atkins Limited (2018) www.atkinsglobal.com



Client  
**Camden**  
Project Title  
Kilburn Grange Childrens Centre

Drawing Title  
Architectural  
Existing  
Sections AA & BB

Scale	Designed	Drawn	Checked	Authorised
1 : 50	KIA	KIA	AS	JW
Original Size	Date	Date	Date	Date
A1	01/06/18	15/08/18	11/12/18	14/12/18

Drawing Number  
5165784-ATK-XX-DR-A-0601  
Revision  
P 1

A

B

C

D

E

F

ToP 6.449 m  
▼ Parapet Level  
FFL 6.235 m  
▼ Roof Level (1)

FFL 3.415 m  
▼ 1 Level  
FFL 2.880 m  
▼ Exist Roof Level (0)

FFL 0.000 m  
▼ 0 Level

A-1F-128  
Staff Room  
17.9 m<sup>2</sup>

A-1F-130  
Circulation  
14.6 m<sup>2</sup>

A-1F-138  
Hygiene room  
17.7 m<sup>2</sup>

A-1F-133  
Children's Centre  
36.0 m<sup>2</sup>

A-1F-135  
Play Change  
4.8 m<sup>2</sup>

A-0F-120  
Health Office  
14.8 m<sup>2</sup>

A-0F-100  
Circulation  
29.5 m<sup>2</sup>

A-0F-101  
Nursery  
48.0 m<sup>2</sup>

A-0F-104  
Play Change  
1.9 m<sup>2</sup>

A-0F-105  
Ancillary  
4.3 m<sup>2</sup>

A-0F-106  
Nursery  
21.0 m<sup>2</sup>

A-0F-108  
Nursery  
8.6 m<sup>2</sup>

A-0F-109  
Store  
2.6 m<sup>2</sup>

2  
0601  
Existing Section B  
1 : 50

Atkins Project Number: 5165784