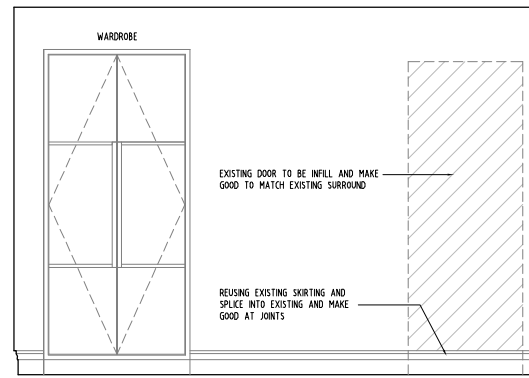
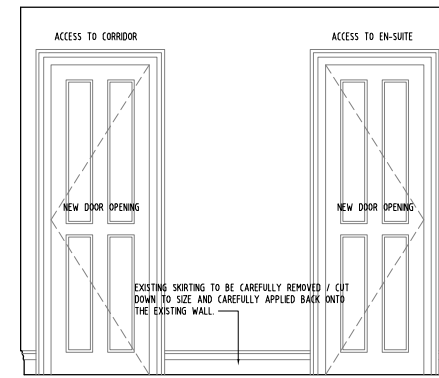


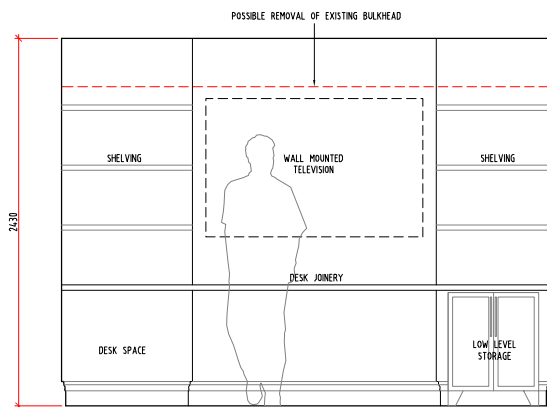
BEDROOM 1 - ELEVATION A



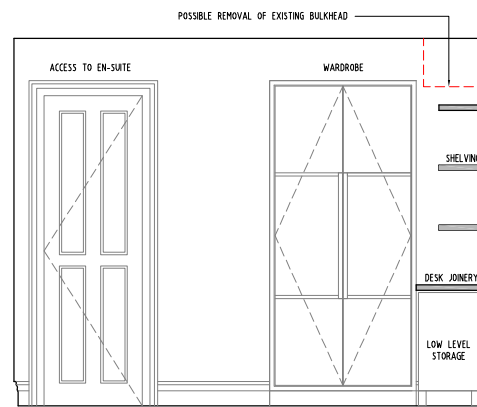
BEDROOM 1 - ELEVATION B



BEDROOM 1 - ELEVATION C

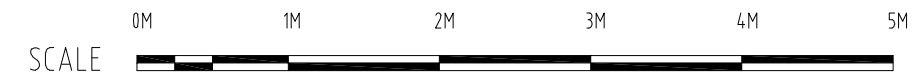


BEDROOM 2 - ELEVATION A



BEDROOM 2 - ELEVATION B

PROPOSED
LOWER GROUND FLOOR - PART INTERNAL ELEVATIONS



Disclaimer

© This drawing is the copyright of Rigby & Rigby and may not be reproduced or used except by written permission.

If you notice any discrepancies between drawings/information supplied by Rigby & Rigby and drawings/information supplied by other consultants or specialist sub-contractors, please notify Rigby & Rigby immediately detailing the discrepancies which have been identified.

Do not scale, use given dimensions only, please read this drawing in conjunction with the specification. All site dimensions to be checked prior to fabrication.

Revisions

London

T: +44 (0)20 3418 0446
E: enquiries@rigbyandrigby.com

80 Brook Street, Mayfair,
London, United Kingdom
W1K 5EG

Reg in England & Wales No. 5884731

Country

T: +44 (0)1789 610010
E: enquiries@rigbyandrigby.com

Bridgeway House, Bridgeway,
Stratford Upon Avon,
United Kingdom CV37 6YX

Company VAT No. 293890553

Job Title

54 Huntley Street,
Holborn
Proposed Lower Ground
Part Internal Elevations

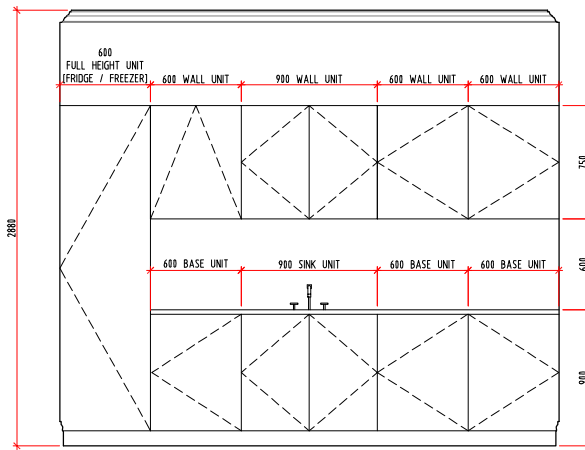
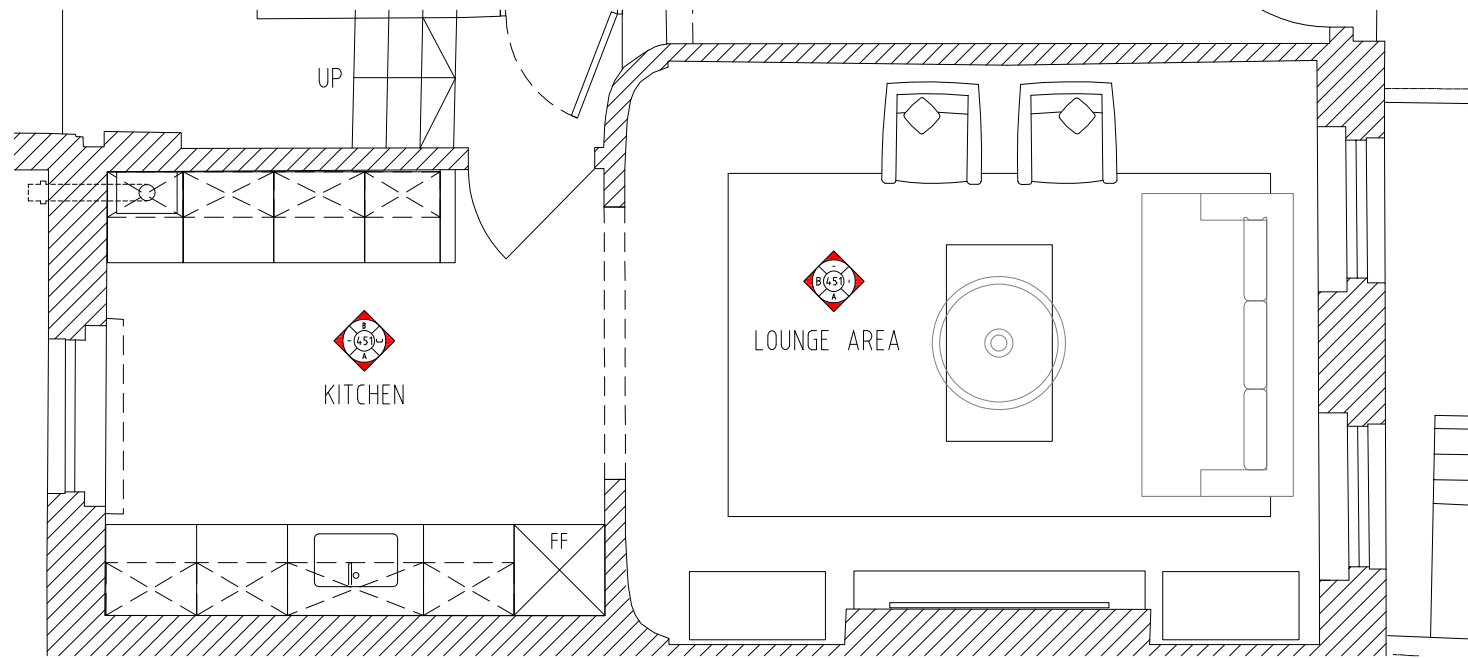
Job Number
Drawing Number
Drawn by
Scale
Status

163
450 REV -
1:25 @ A1
PRELIMINARY

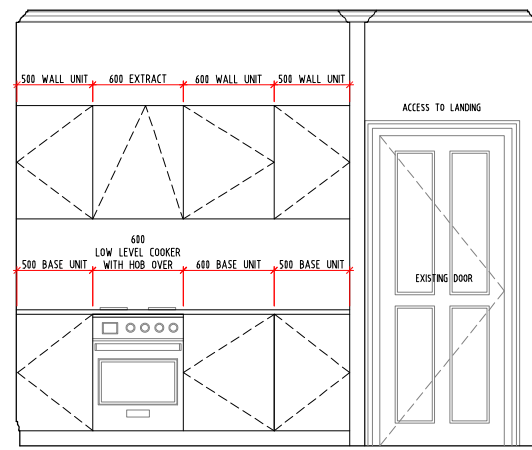
RIGBY & RIGBY

RIBA

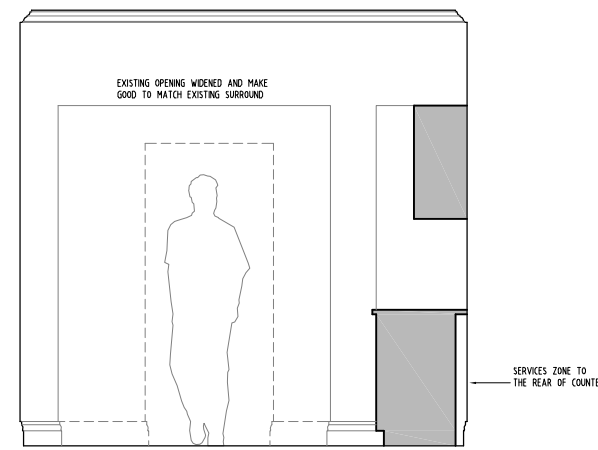
www.rigbyandrigby.com



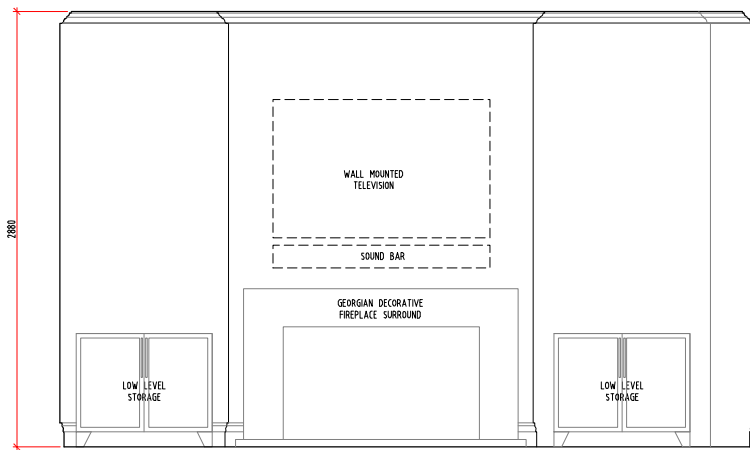
KITCHEN - ELEVATION A



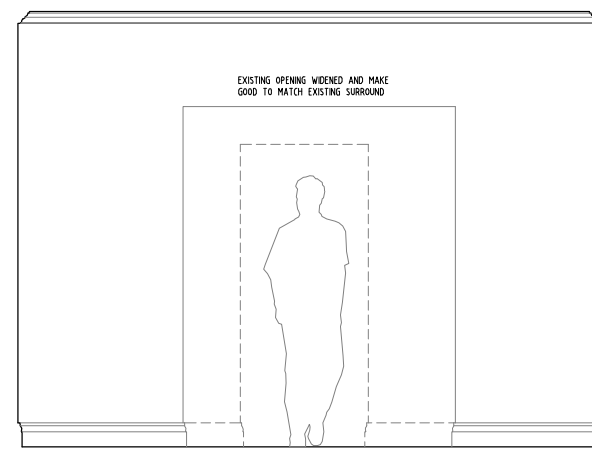
KITCHEN - ELEVATION B



KITCHEN - ELEVATION C

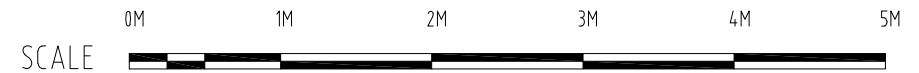


LOUNGE - ELEVATION A



LOUNGE - ELEVATION B

PROPOSED
GROUND FLOOR - PART INTERNAL ELEVATIONS



Disclaimer

© This drawing is the copyright of Rigby & Rigby and may not be reproduced or used except by written permission.

If you notice any discrepancies between drawings/information supplied by Rigby & Rigby and drawings/information supplied by other consultants or specialist sub-contractors, please notify Rigby & Rigby immediately detailing the discrepancies which have been identified.

Do not scale, use given dimensions only, please read this drawing in conjunction with the specification. All site dimensions to be checked prior to fabrication.

Revisions

London

T: +44 (0)20 3418 0446
E: enquiries@rigbyandrigby.com

80 Brook Street, Mayfair,
London, United Kingdom
W1K 5EG

Reg in England & Wales No. 5884731

Country

T: +44 (0)1789 610010
E: enquiries@rigbyandrigby.com

Bridgeway House, Bridgeway,
Stratford Upon Avon,
United Kingdom CV37 6YX

Company VAT No. 293890553

Job Title

54 Huntley Street,
Holborn
Proposed Ground Floor
Part Internal Elevations

Drawing Title

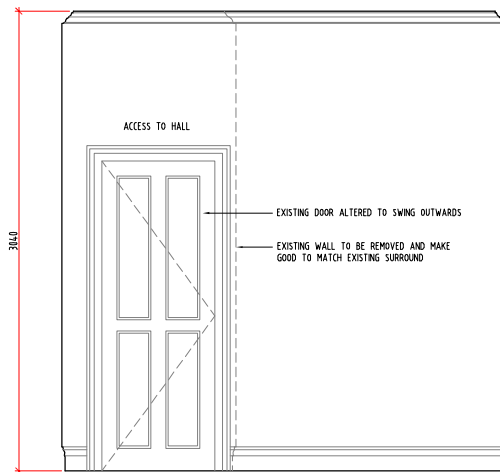
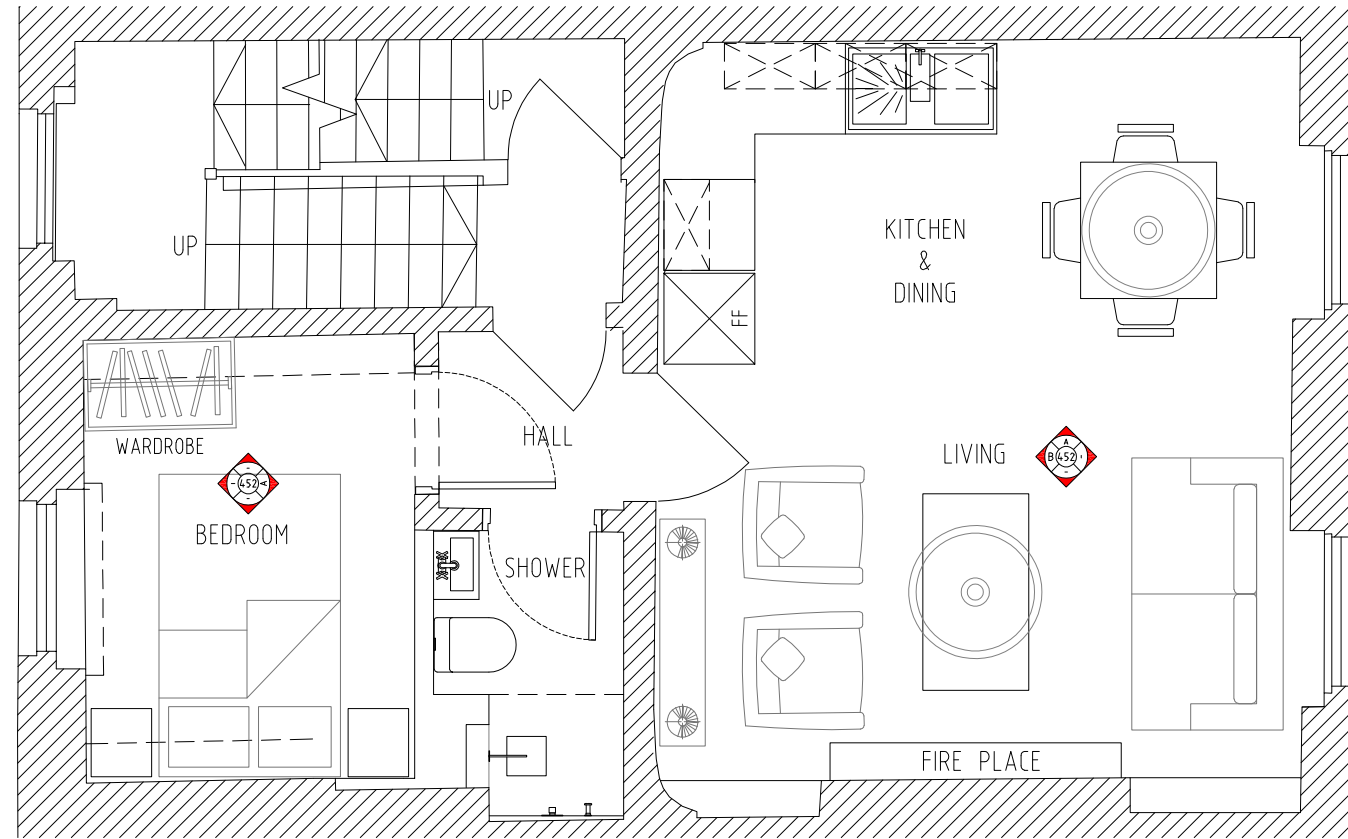
Job Number
Drawing Number
Drawn by
Scale
Status

163
451 REV -
1:25 @ A1
PRELIMINARY

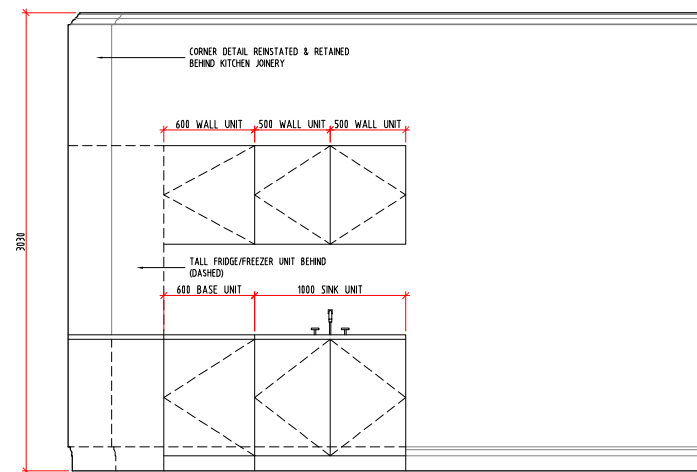
RIGBY & RIGBY

RIBA

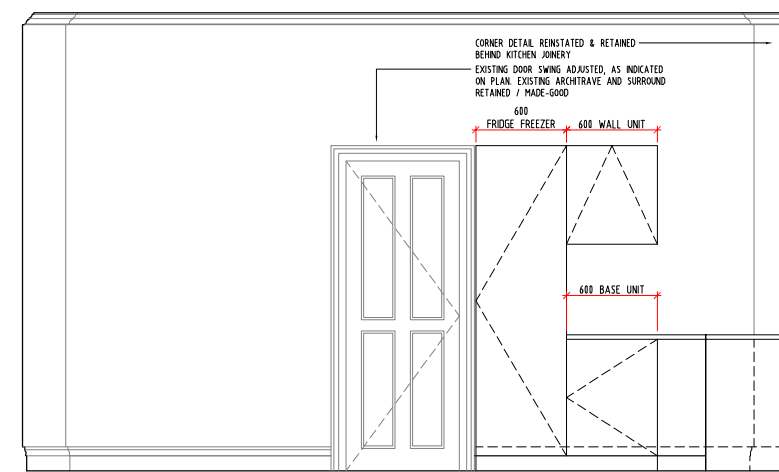
www.rigbyandrigby.com



BEDROOM - ELEVATION A



OPEN PLAN LIVING - ELEVATION A



OPEN PLAN LIVING - ELEVATION B

PROPOSED
FIRST FLOOR - PART INTERNAL ELEVATIONS



Disclaimer

© This drawing is the copyright of Rigby & Rigby and may not be reproduced or used except by written permission.

If you notice any discrepancies between drawings/information supplied by Rigby & Rigby and drawings/information supplied by other consultants or specialist sub-contractors, please notify Rigby & Rigby immediately detailing the discrepancies which have been identified.

Do not scale, use given dimensions only, please read this drawing in conjunction with the specification. All site dimensions to be checked prior to fabrication.

Revisions

London

T: +44 (0)20 3418 0446
E: enquiries@rigbyandrigby.com

80 Brook Street, Mayfair,
London, United Kingdom
W1K 5EG

Reg in England & Wales No. 5884731

Country

T: +44 (0)1789 610010
E: enquiries@rigbyandrigby.com

Bridgeway House, Bridgeway,
Stratford Upon Avon,
United Kingdom CV37 6YX

Company VAT No. 293890553

Job Title

54 Huntley Street,
Holborn
Proposed First Floor
Part Internal Elevations

Drawing Title

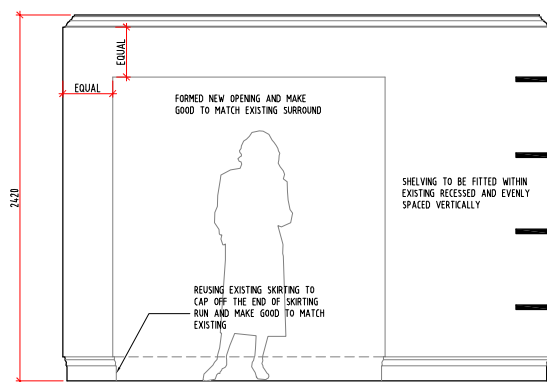
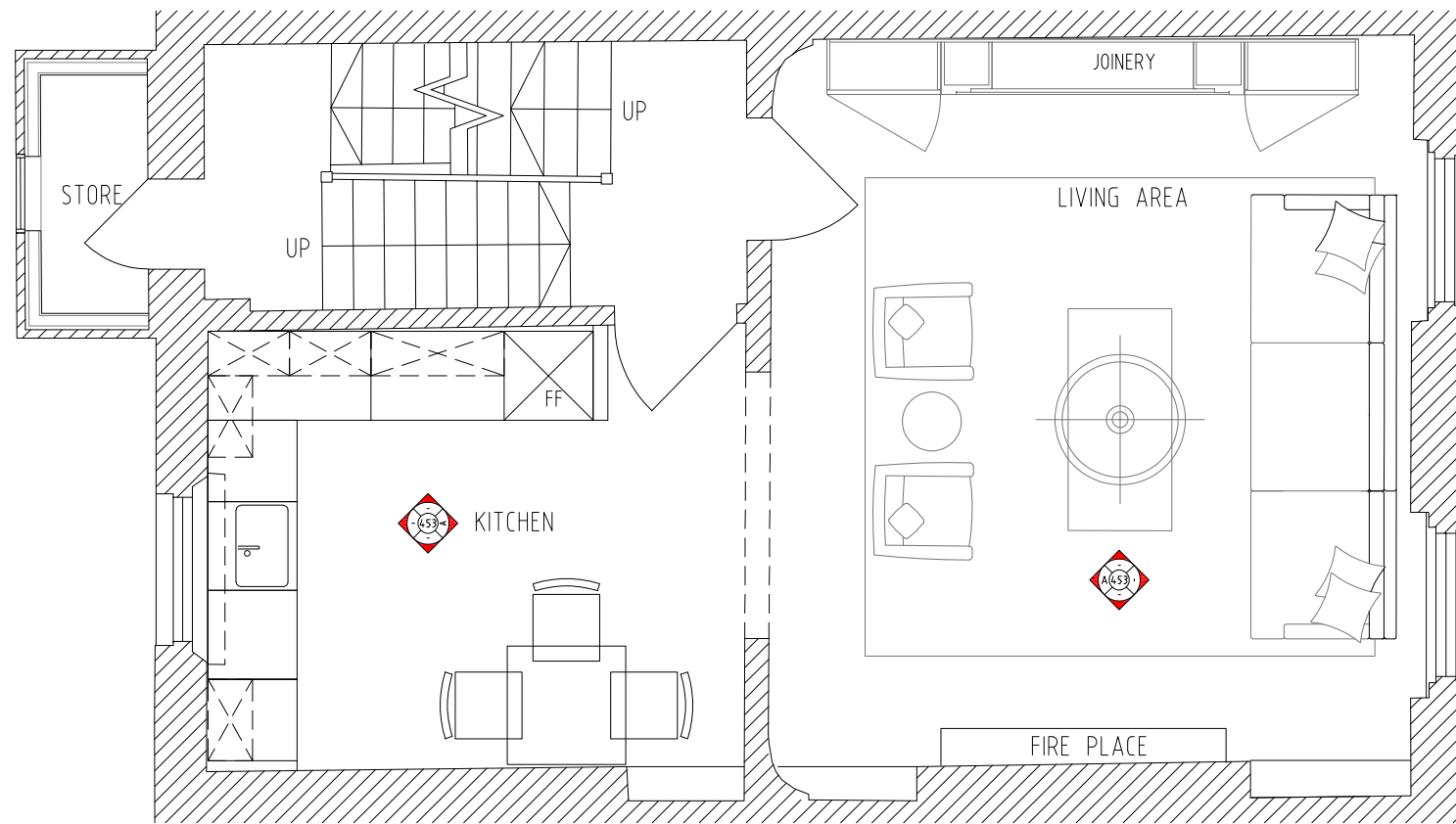
163
452 REV -
Drawn by
Scale
Status

1:25 @ A1
PRELIMINARY

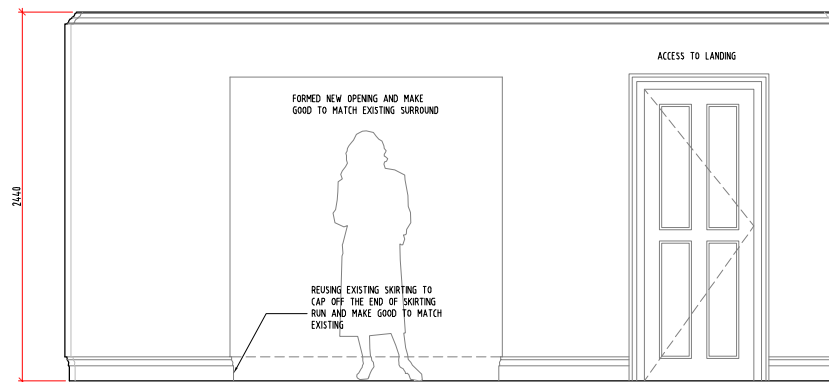
RIGBY & RIGBY

RIBA

www.rigbyandrigby.com

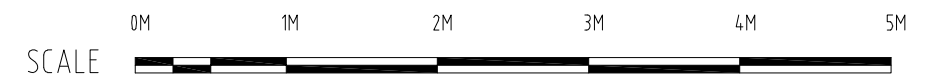


KITCHEN - ELEVATION A



LIVING - ELEVATION A

PROPOSED
SECOND FLOOR - PART INTERNAL ELEVATIONS



Disclaimer

© This drawing is the copyright of Rigby & Rigby and may not be reproduced or used except by written permission.

If you notice any discrepancies between drawings/information supplied by Rigby & Rigby and drawings/information supplied by other consultants or specialist sub-contractors, please notify Rigby & Rigby immediately detailing the discrepancies which have been identified.

Do not scale, use given dimensions only, please read this drawing in conjunction with the specification. All site dimensions to be checked prior to fabrication.

Revisions

London

T: +44 (0)20 3418 0446
E: enquiries@rigbyandrigby.com

80 Brook Street, Mayfair,
London, United Kingdom
W1K 5EG

Reg in England & Wales No. 5884731

Country

T: +44 (0)1789 610010
E: enquiries@rigbyandrigby.com

Bridgeway House, Bridgeway,
Stratford Upon Avon,
United Kingdom CV37 6YX

Company VAT No. 293890553

Job Title

54 Huntley Street,
Holborn
Proposed Second Floor
Part Internal Elevations

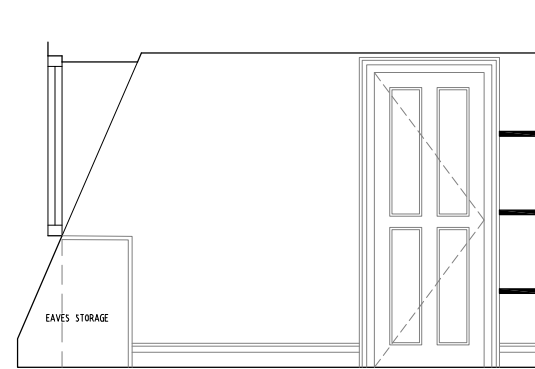
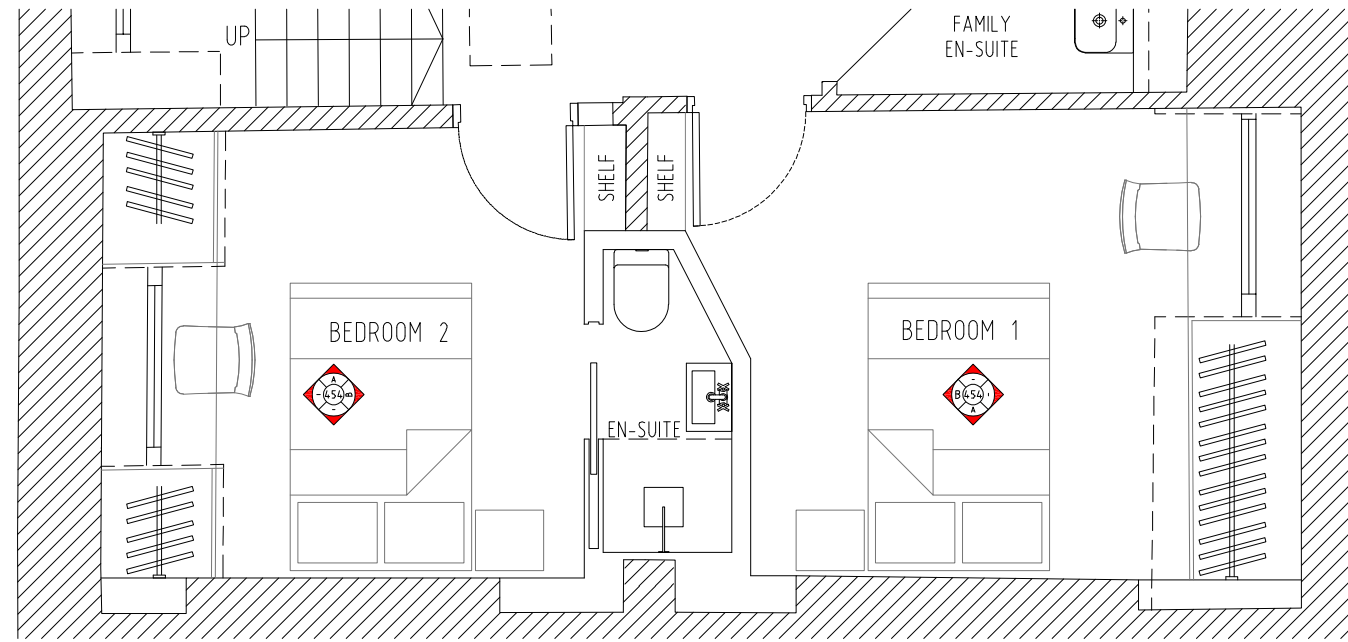
Job Number
Drawing Number
Drawn by
Scale
Status

163
453 REV -
1:25 @ A1
PRELIMINARY

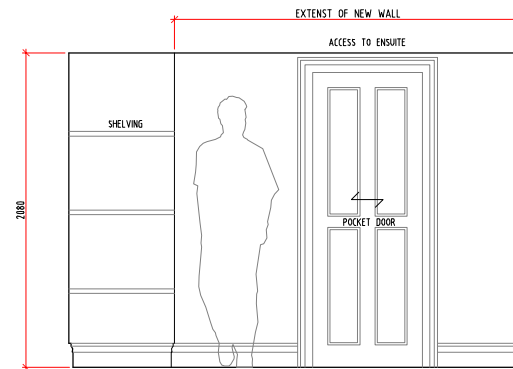
RIGBY & RIGBY

RIBA

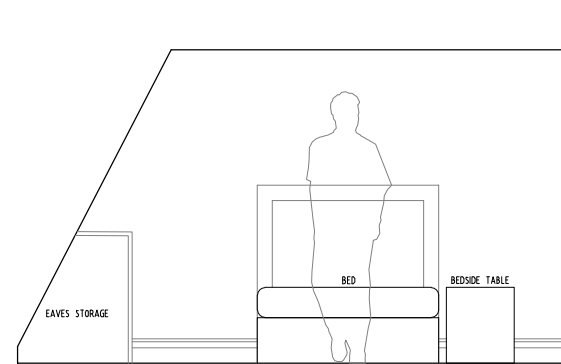
www.rigbyandrigby.com



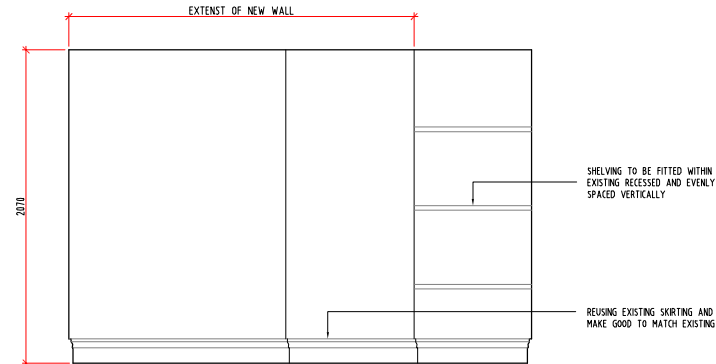
BEDROOM 2 - ELEVATION A



BEDROOM 2 - ELEVATION B

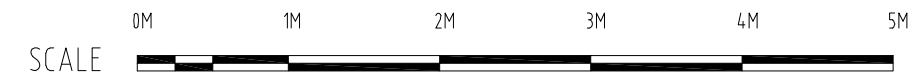


BEDROOM 1 - ELEVATION A



BEDROOM 1 - ELEVATION B

PROPOSED
THIRD FLOOR - PART INTERNAL ELEVATIONS



Disclaimer

© This drawing is the copyright of Rigby & Rigby and may not be reproduced or used except by written permission.

If you notice any discrepancies between drawings/information supplied by Rigby & Rigby and drawings/information supplied by other consultants or specialist sub-contractors, please notify Rigby & Rigby immediately detailing the discrepancies which have been identified.

Do not scale, use given dimensions only, please read this drawing in conjunction with the specification. All site dimensions to be checked prior to fabrication.

Revisions

London

T: +44 (0)20 3418 0446
E: enquiries@rigbyandrigby.com

80 Brook Street, Mayfair,
London, United Kingdom
W1K 5EG

Reg in England & Wales No. 5884731

Country

T: +44 (0)1789 610010
E: enquiries@rigbyandrigby.com

Bridgeway House, Bridgeway,
Stratford Upon Avon,
United Kingdom CV37 6YX

Company VAT No. 293890553

Job Title

54 Huntley Street,
Holborn
Proposed Second Floor
Part Internal Elevations

Job Number
Drawing Number
Drawn by
Scale
Status

163
454 REV -
1:25 @ A1
PRELIMINARY

RIGBY & RIGBY

RIBA

www.rigbyandrigby.com