

EXISTING LOWER GROUND FLOOR PLAN



Disclaimer
 © This drawing is the copyright of Rigby & Rigby and may not be reproduced or used except by written permission.

Revisions

If you notice any discrepancies between drawings/information supplied by Rigby & Rigby and drawings/information supplied by other consultants or specialist sub-contractors, please notify Rigby & Rigby immediately detailing the discrepancies which have been identified.

Do not scale, use given dimensions only, please read this drawing in conjunction with the specification. All site dimensions to be checked prior to fabrication.

London
 T: +44 (0)20 3418 0446
 E: enquiries@rigbyandrigby.com

80 Brook Street, Mayfair,
 London, United Kingdom
 W1K 5EG

Reg in England & Wales No. 5884731

Country
 T: +44 (0)1789 610010
 E: enquiries@rigbyandrigby.com

Bridgeway House, Bridgeway,
 Stratford Upon Avon,
 United Kingdom CV37 6YX

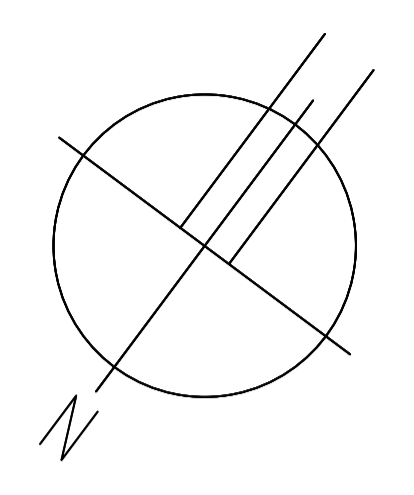
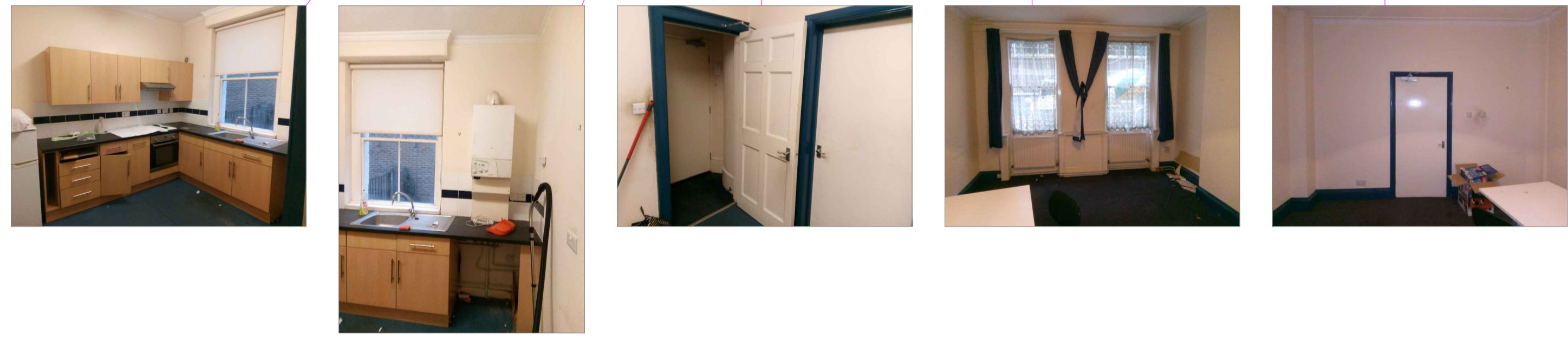
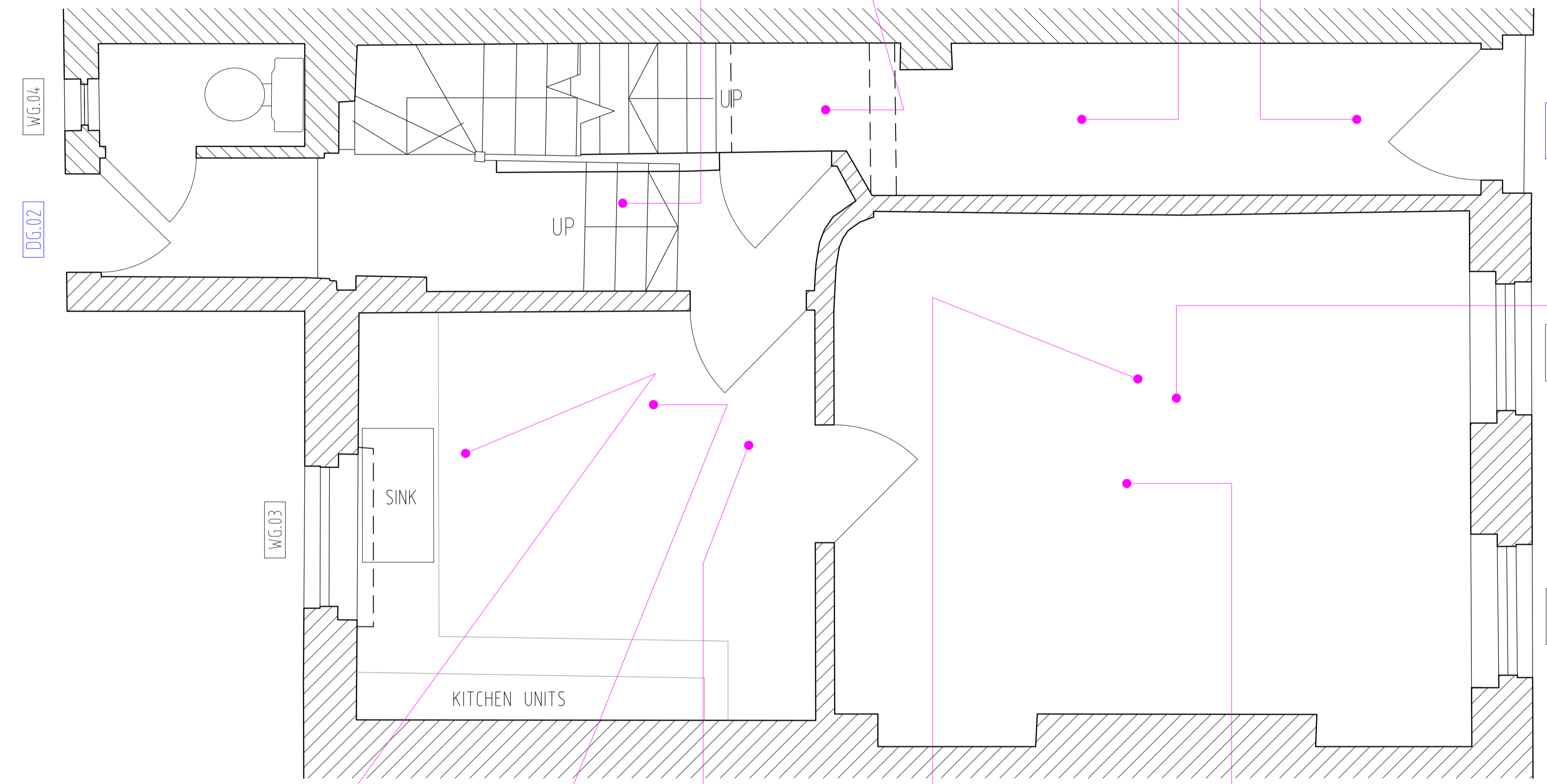
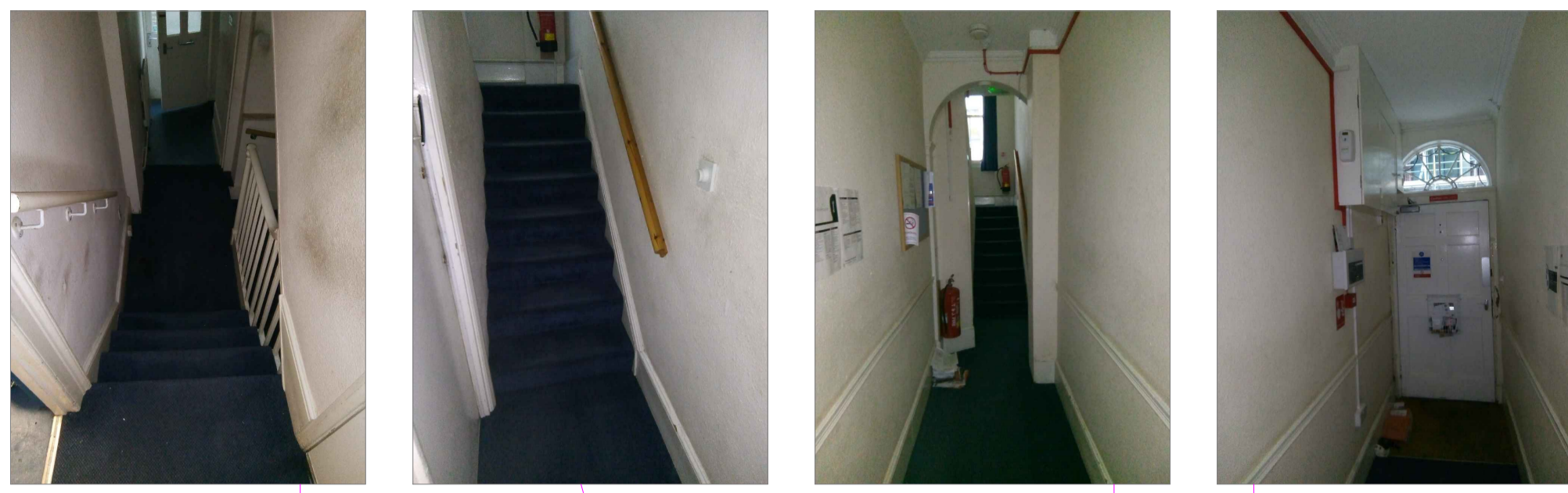
Company VAT No. 293890553

Job Title 54 Huntley Street,
 Holborn
 Existing Lower Ground
 Floor Plan
Drawing Title
Job Number 163
Drawing Number 200 REV -
Drawn by
Scale 1:25 @ A1
Status PRELIMINARY

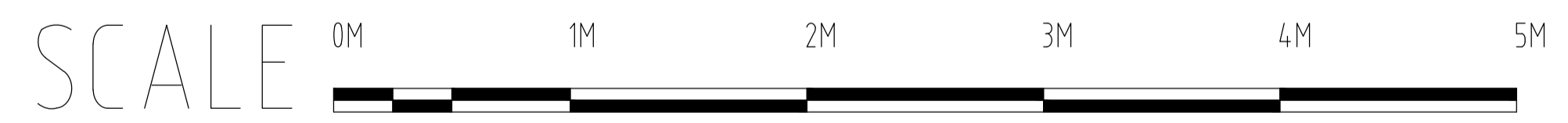
RIGBY & RIGBY

RIBA

www.rigbyandrigby.com



EXISTING GROUND FLOOR PLAN



Disclaimer
© This drawing is the copyright of Rigby & Rigby and may not be reproduced or used except by written permission.

If you notice any discrepancies between drawings/information supplied by Rigby & Rigby and drawings/information supplied by other consultants or specialist sub-contractors, please notify Rigby & Rigby immediately detailing the discrepancies which have been identified.

Do not scale, use given dimensions only, please read this drawing in conjunction with the specification. All site dimensions to be checked prior to fabrication.

Revisions

London
T: +44 (0)20 3418 0446
E: enquiries@rigbyandrigby.com

80 Brook Street, Mayfair,
London, United Kingdom
W1K 5EG

Reg in England & Wales No. 5884731

Country
T: +44 (0)1789 610010
E: enquiries@rigbyandrigby.com

Bridgeway House, Bridgeway,
Stratford Upon Avon,
United Kingdom CV37 6YX

Company VAT No. 293890553

Job Title 54 Huntley Street,
Holborn

Drawing Title Existing Ground
Floor Plan

Job Number 163

Drawing Number 201 REV -

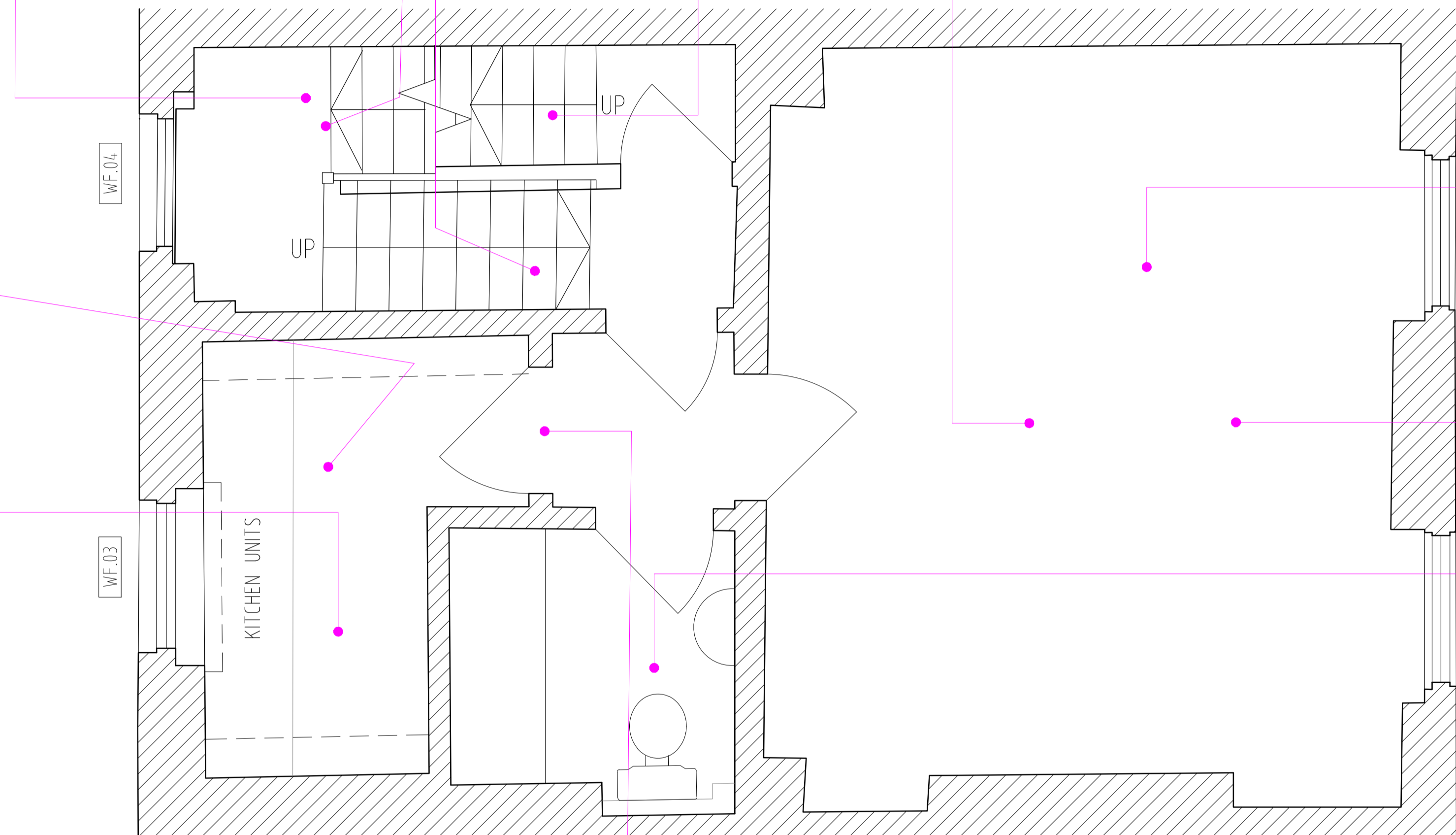
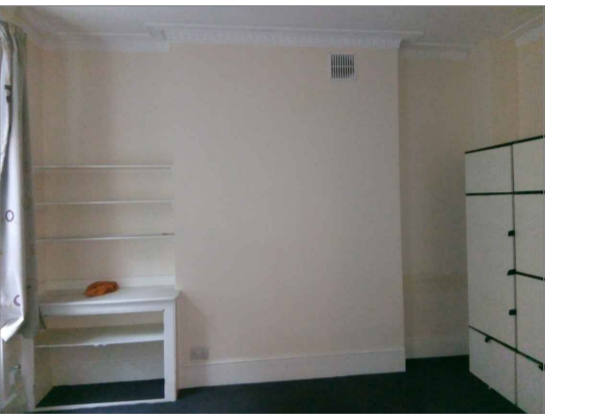
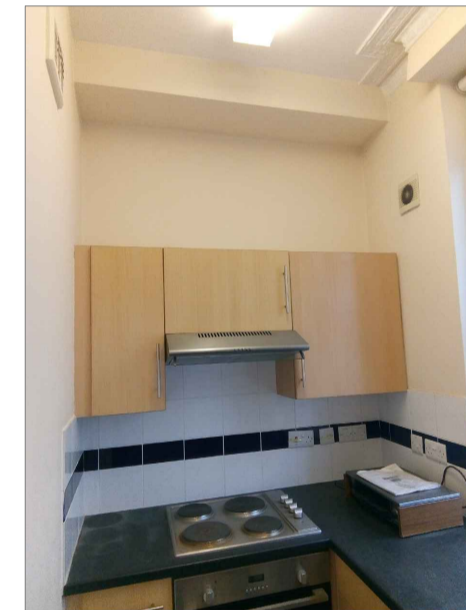
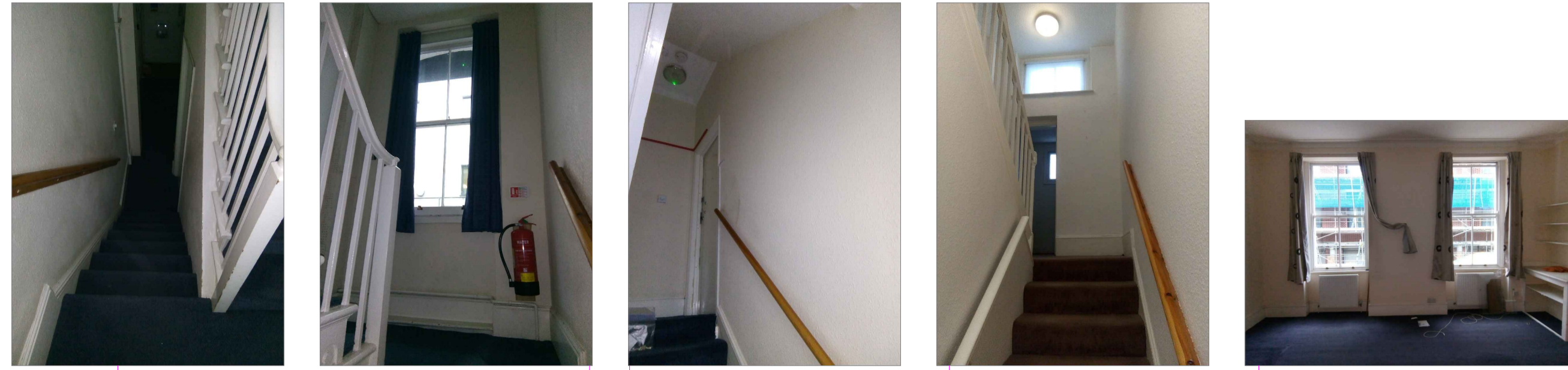
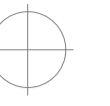
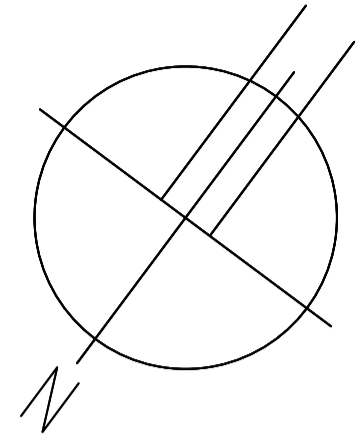
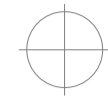
Drawn by Scale

Status 1:25 @ A1
PRELIMINARY

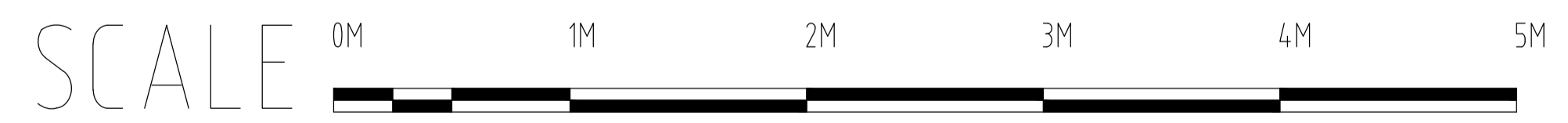
RIGBY & RIGBY

RIBA

www.rigbyandrigby.com



EXISTING FIRST FLOOR PLAN



Disclaimer
© This drawing is the copyright of Rigby & Rigby and may not be reproduced or used except by written permission.

Revisions

If you notice any discrepancies between drawings/information supplied by Rigby & Rigby and drawings/information supplied by other consultants or specialist sub-contractors, please notify Rigby & Rigby immediately detailing the discrepancies which have been identified.

Do not scale, use given dimensions only, please read this drawing in conjunction with the specification. All site dimensions to be checked prior to fabrication.

London
T: +44 (0)20 3418 0446
E: enquiries@rigbyandrigby.com

80 Brook Street, Mayfair,
London, United Kingdom
W1K 5EG

Reg in England & Wales No. 5884731

Country
T: +44 (0)1789 610010
E: enquiries@rigbyandrigby.com

Bridgeway House, Bridgeway,
Stratford Upon Avon,
United Kingdom CV37 6YX

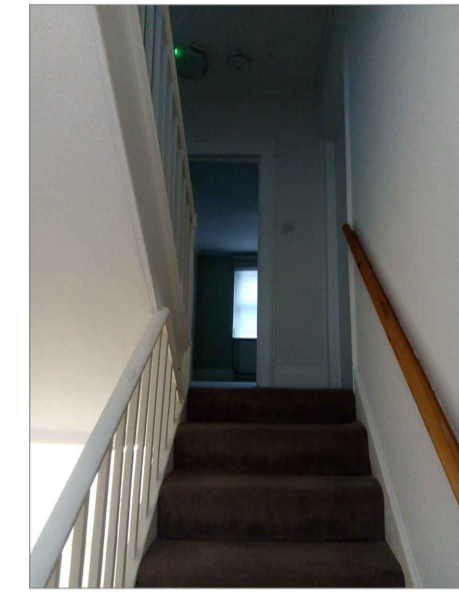
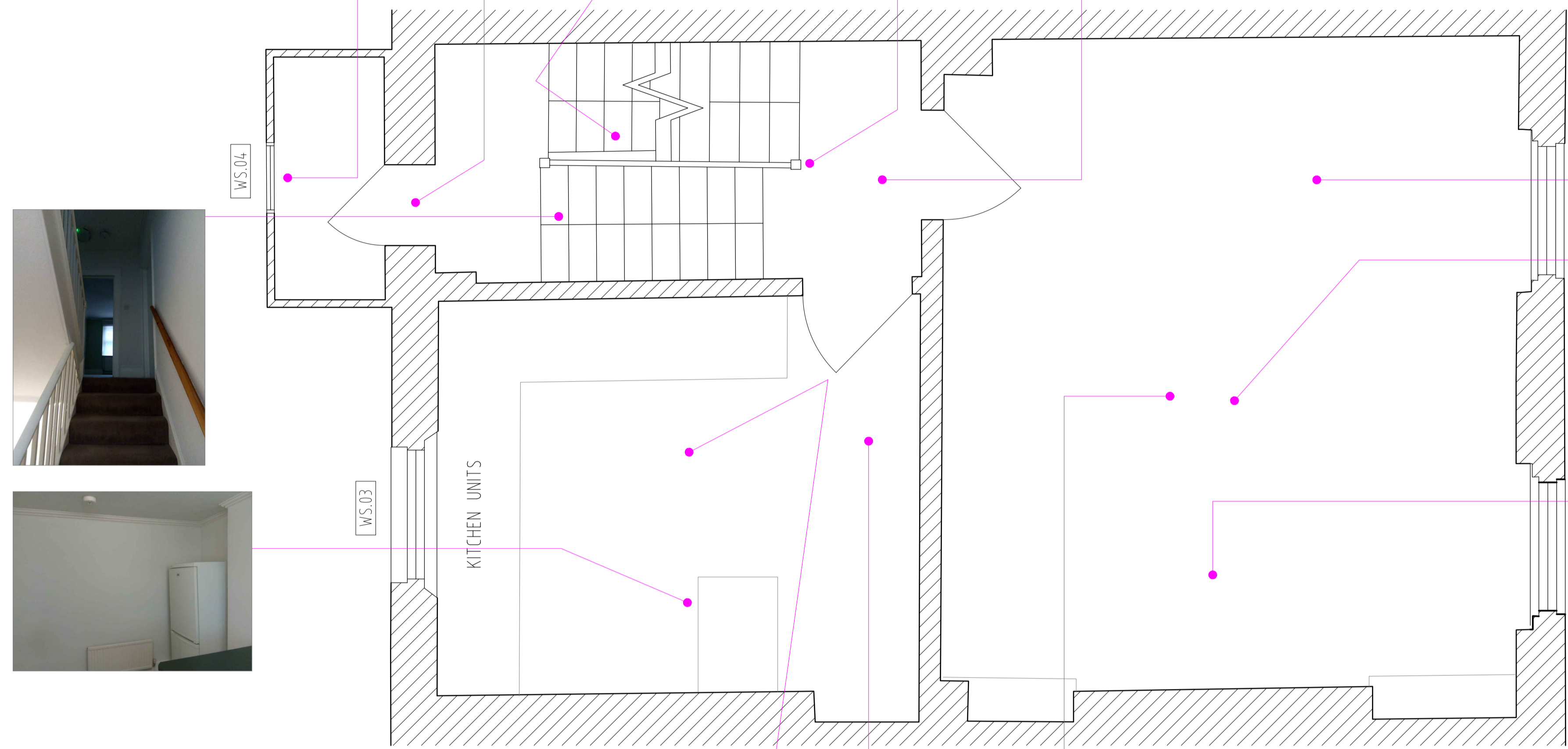
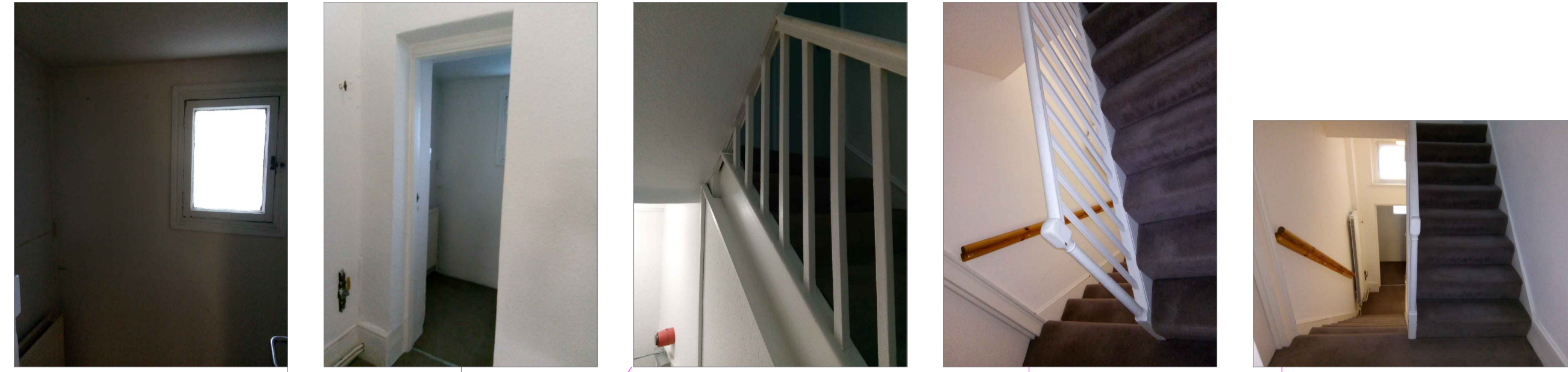
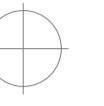
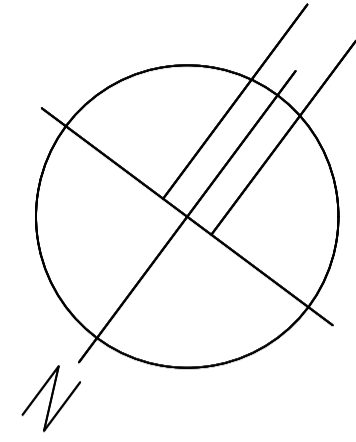
Company VAT No. 293890553

Job Title 54 Huntley Street,
Holborn
Existing First
Floor Plan
Drawing Title
Job Number 163
Drawing Number 202 REV -
Drawn by
Scale 1:25 @ A1
Status PRELIMINARY

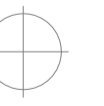
RIGBY & RIGBY

RIBA

www.rigbyandrigby.com



EXISTING SECOND FLOOR PLAN



Disclaimer
© This drawing is the copyright of Rigby & Rigby and may not be reproduced or used except by written permission.

Revisions

If you notice any discrepancies between drawings/information supplied by Rigby & Rigby and drawings/information supplied by other consultants or specialist sub-contractors, please notify Rigby & Rigby immediately detailing the discrepancies which have been identified.

Do not scale, use given dimensions only, please read this drawing in conjunction with the specification. All site dimensions to be checked prior to fabrication.

London
T: +44 (0)20 3418 0446
E: enquiries@rigbyandrigby.com

80 Brook Street, Mayfair,
London, United Kingdom
W1K 5EG

Reg in England & Wales No. 5884731

Country
T: +44 (0)1789 610010
E: enquiries@rigbyandrigby.com

Bridgeway House, Bridgeway,
Stratford Upon Avon,
United Kingdom CV37 6YX

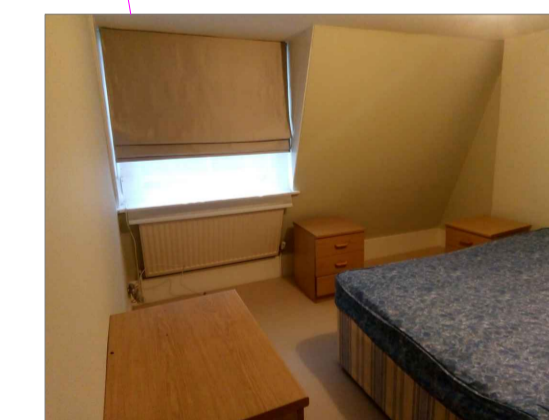
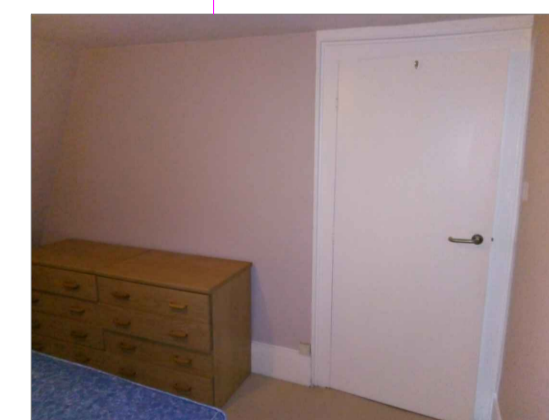
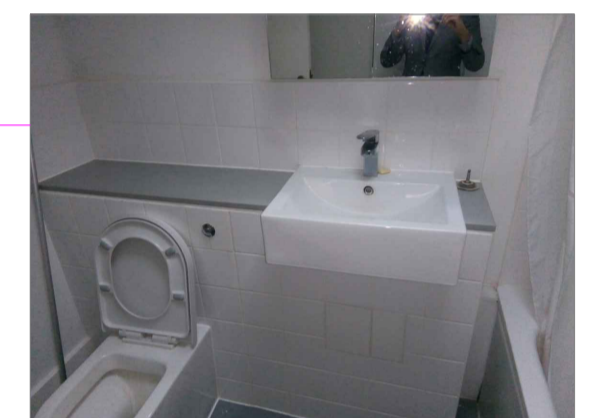
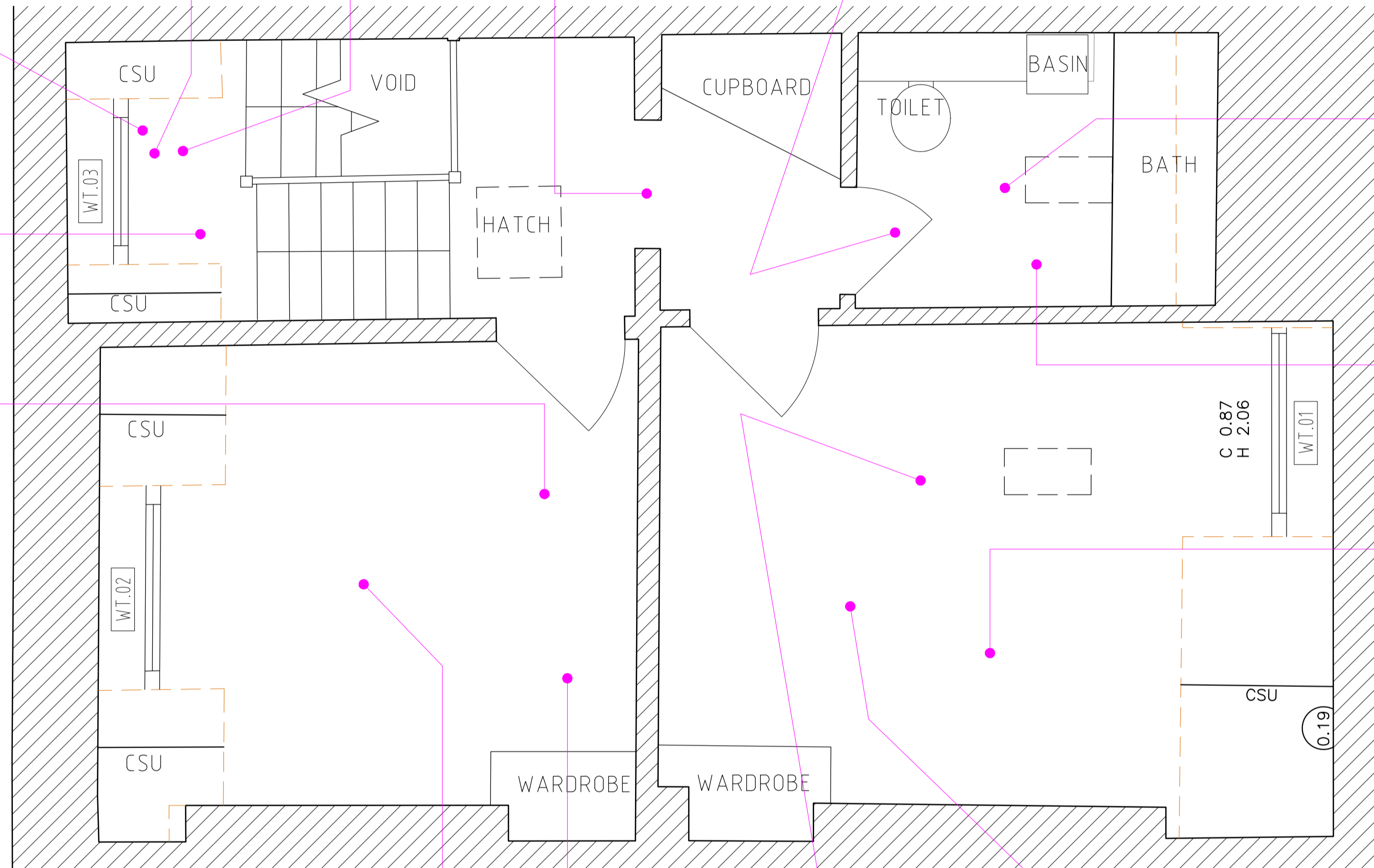
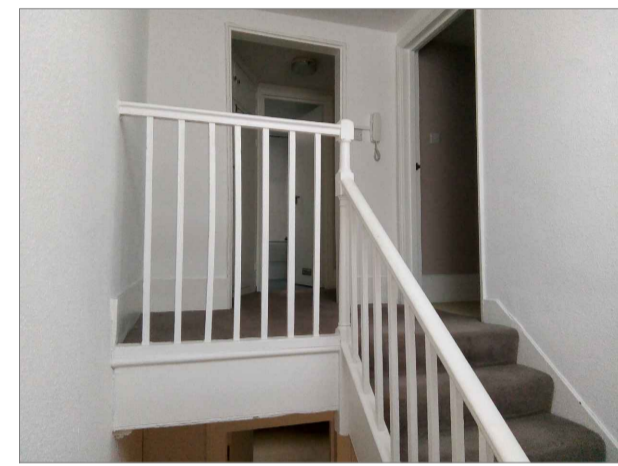
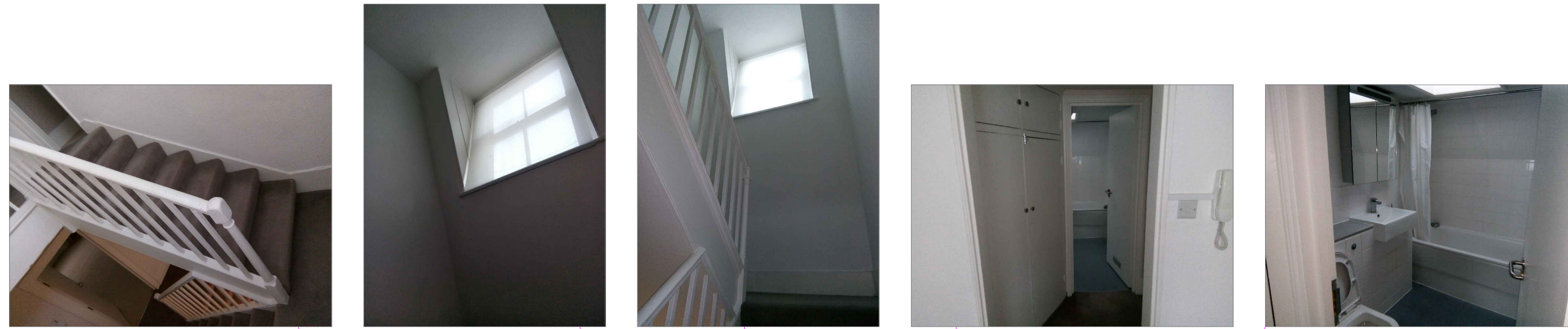
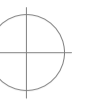
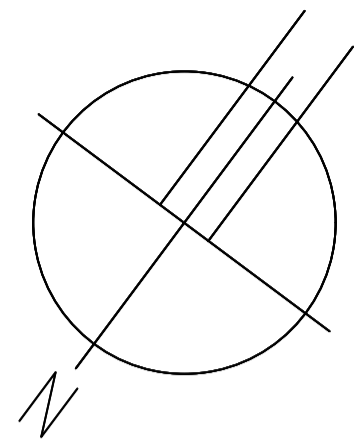
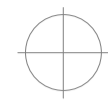
Company VAT No. 293890553

Job Title 54 Huntley Street,
Holborn
Existing Second
Floor Plan
Drawing Title
Job Number 163
Drawing Number 203 REV -
Drawn by
Scale 1:25 @ A1
Status PRELIMINARY

RIGBY & RIGBY

RIBA

www.rigbyandrigby.com



EXISTING THIRD FLOOR PLAN



Disclaimer
© This drawing is the copyright of Rigby & Rigby and may not be reproduced or used except by written permission.

Revisions

If you notice any discrepancies between drawings/information supplied by Rigby & Rigby and drawings/information supplied by other consultants or specialist sub-contractors, please notify Rigby & Rigby immediately detailing the discrepancies which have been identified.

Do not scale, use given dimensions only, please read this drawing in conjunction with the specification. All site dimensions to be checked prior to fabrication.

London
T: +44 (0)20 3418 0446
E: enquiries@rigbyandrigby.com

80 Brook Street, Mayfair,
London, United Kingdom
W1K 5EG

Reg in England & Wales No. 5884731

Country
T: +44 (0)1789 610010
E: enquiries@rigbyandrigby.com

Bridgeway House, Bridgeway,
Stratford Upon Avon,
United Kingdom CV37 6YX

Company VAT No. 293890553

Job Title 54 Huntley Street,
Holborn
Existing Third
Floor Plan
Drawing Title
Job Number 163
Drawing Number 202 REV -
Drawn by
Scale 1:25 @ A1
Status PRELIMINARY

RIGBY & RIGBY

RIBA

www.rigbyandrigby.com