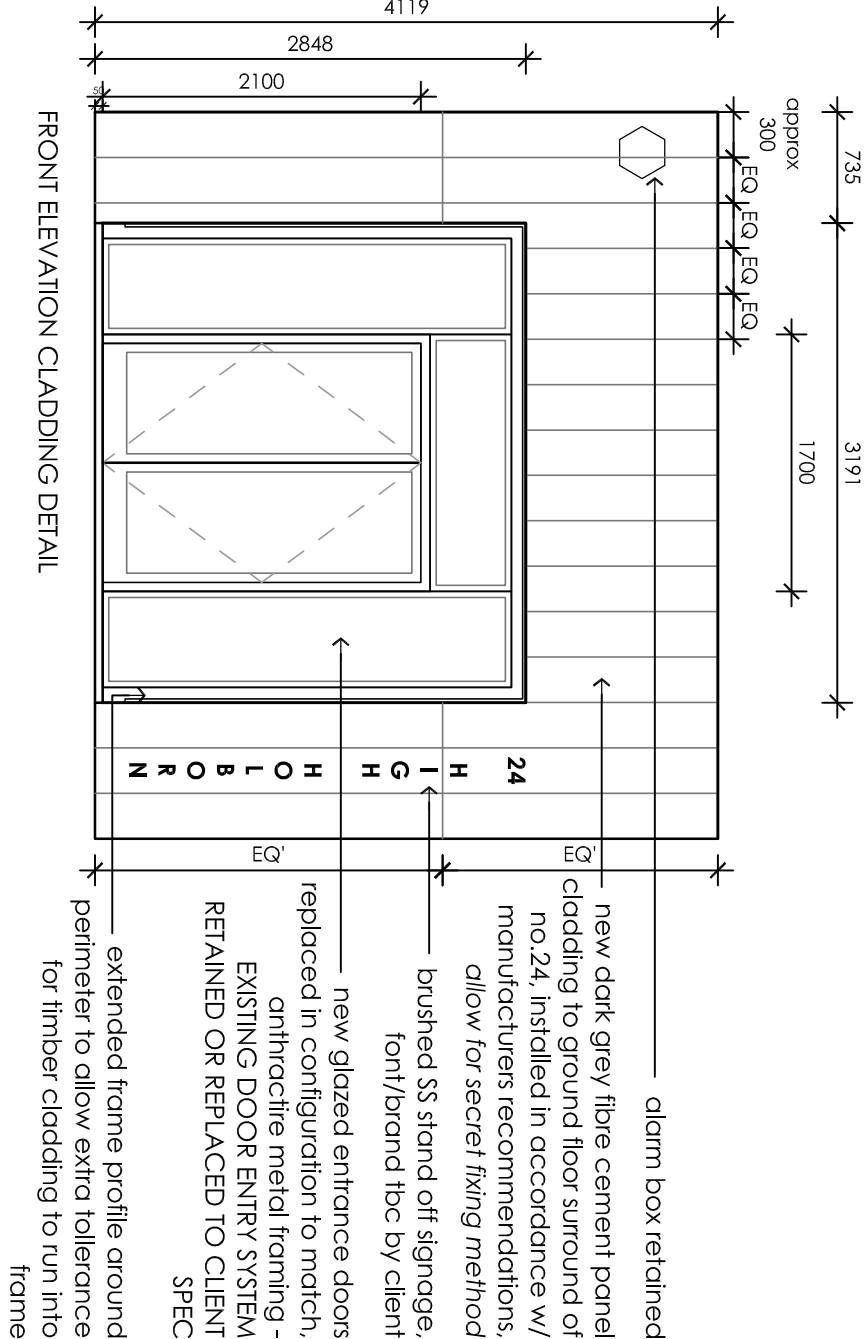


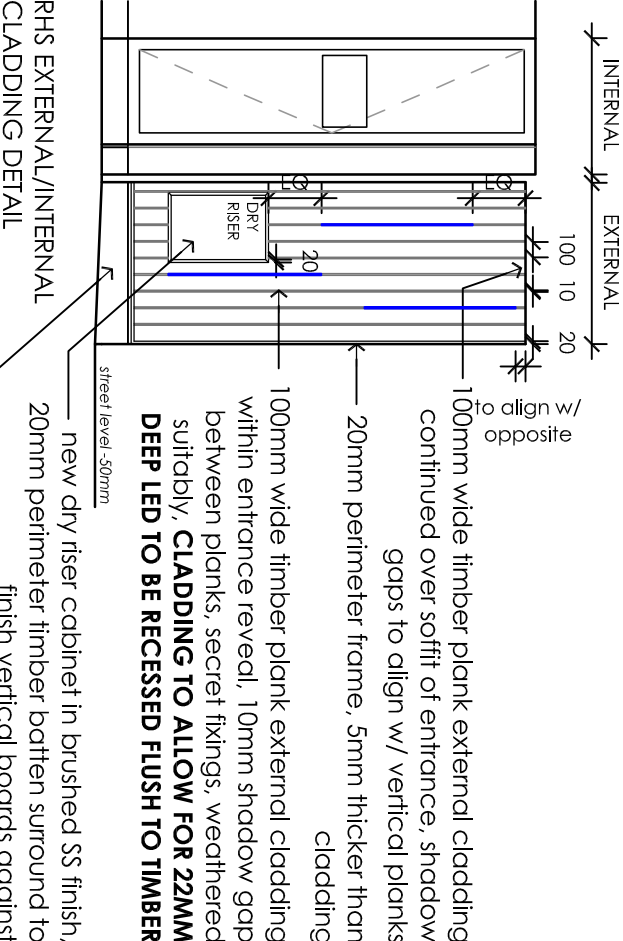
LHS EXTERNAL/INTERNAL CLADDING DETAIL



PRECEDENT RECESSED LINEAR LED IMAGE



FRONT ELEVATION CLADDING DETAIL



RHS EXTERNAL/INTERNAL CLADDING DETAIL

SCALE BAR 1:50@A3



METRES

X	PLANNING ISSUE		11.01.19	
	Rev	Revision	Date	By
NOTES				
All setting out dimensions and points will be found on the construction issue drawings.				
All dimensions to be checked on site prior to commencement of works. Do not scale this drawing.				
Issue	PLANNING			
Project	NAPIER HOUSE HIGH HOLBORN			
Detail	PROPOSED GROUND FLOOR INTERNAL/EXTERNAL ELEVATIONS			
Scale	1:50 @A3	Date	09.01.2019	
Drawing N°	506/E/202	Revision	X	

gravity design associates

Old Bank Court, Morocco Street, London SE1 3JB
+44(0)20 7089 9134 studio@gravitydesign.co.uk

