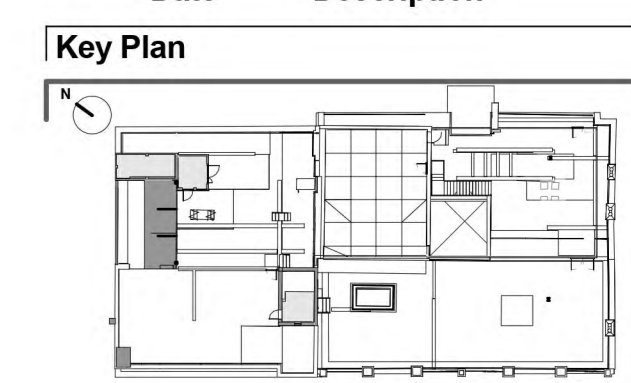


+58500 LVMF - View 2B.1



Date	Description
P 10 18.01.18	Material Changes for Facade
P 9 17.01.18	Revised Louvre height (DVD Comments)
P 8 15.01.18	Planning - reviewed for DVD comments
P 7 12.01.18	Planning - reviewed drawings
P 6 08.01.18	Planning - Louvre heights reduced
P 5 22.12.17	Employer's Requirements
P 4 20.12.17	Planning drawings - new elements to be highlighted
P 3 08.11.17	Balustrade to Level 2S - PTS
P 2 09.10.17	Issue for planning - amendments as per DVD comments
P 1 13.07.17	Planning Review



DO NOT SCALE THIS DRAWING. ALL DIMENSIONS TO BE VERIFIED ON SITE. DRAWINGS ARE TO BE READ IN CONJUNCTION WITH ALL RELATED ARCHITECTURAL AND ENGINEERING DRAWINGS, SPECIFICATIONS AND OTHER RELEVANT TENDER INFORMATION. ANY DISCREPANCIES BETWEEN THIS DRAWING AND ANY OTHER INFORMATION SHOULD BE REPORTED TO THE PROJECT CONTRACTOR. CONTRACTORS ARE TO VERIFY ALL SITE DIMENSIONS AND CONDITIONS BEFORE MANUFACTURE.

Stage 03

ARCHITECTS **sha**

45 Gee Street
Fifth Floor
London
EC1V 3RS
United Kingdom
T 0207 649 4080
www.steffian.co.uk

Project Number | Scale
8239.00 | As indicated | A0

Client
HSL

Project
60 Whitfield Street

Title
Proposed Elevation - Howland Mews

Drawing No | Revisions
60WS-A-SBA-DR-XX-4008-P10

Drawn	Checked	Approved
EL	AI	RC

