

NEW 6 OVER 6 TIMBER SASH WINDOW

W.LG.06

- 1

Single glazed unit
- 2

Top rail
- 3

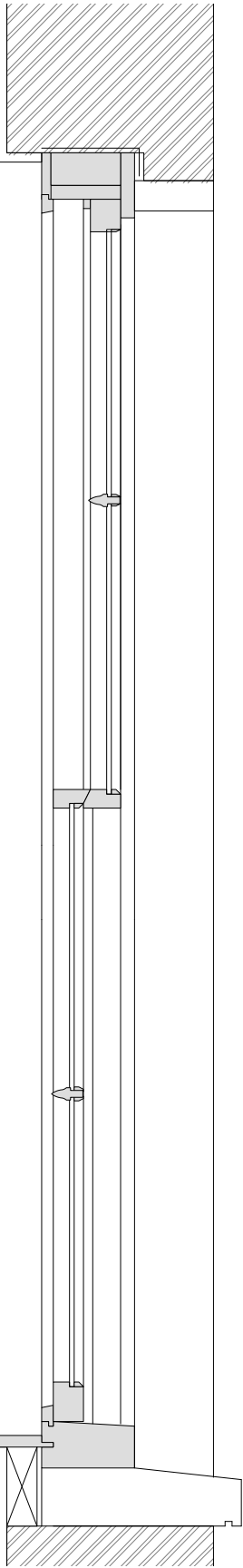
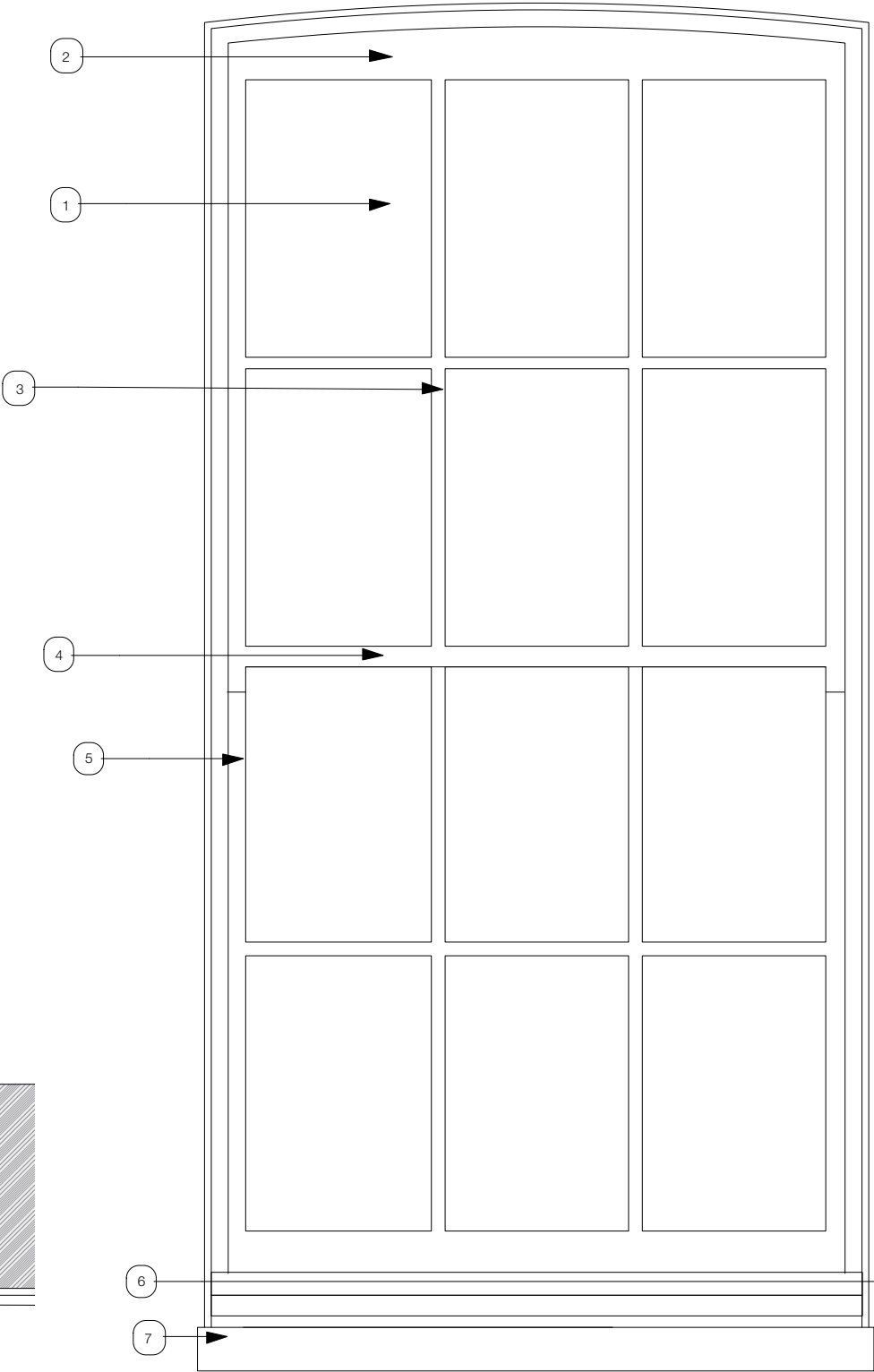
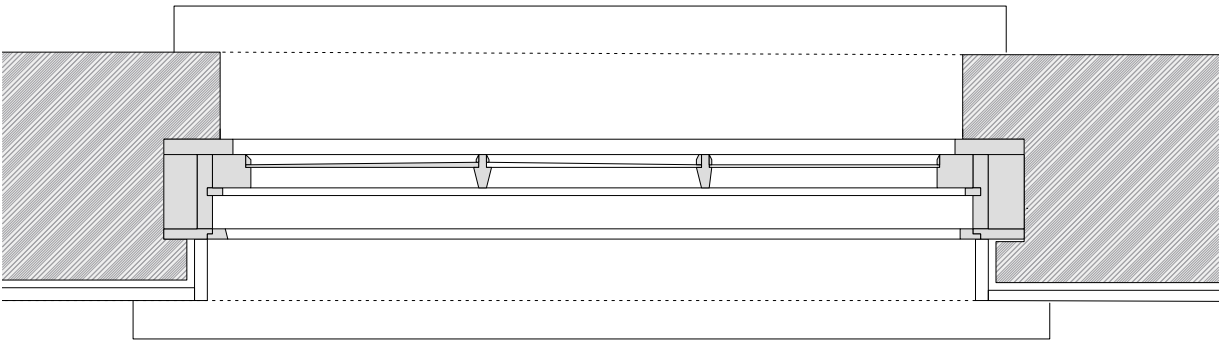
Sash bar
- 4

Meeting rail
- 5

Sash stile
- 6

Timber cill
- 7

Concrete cill



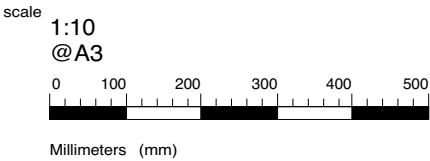
NOTES
Window sizes to be confirmed on site.
Drawing to be read in conjunction with 257.04 Window Schedule,Ironmongery Specification and NBS Specification

JOHANNA MOLINEUS ARCHITECTS

22 GREAT CHAPEL STREET
LONDON W1F 8FR
0207 734 8320
info@johannamolineus.com

© 2017 Johanna Molineus Architects Ltd
Do not scale dimensions from drawing.
Check all dimensions on site prior to commencement of work.
Do not copy or use this drawing without written consent.
Issue or publication does not convey or imply grant of licence.
If the drawing exceeds the quantities in any way the architects are to be informed before work is commenced.
Drawing to be read in conjunction with structural engineer's drawings and specification.

revisions



drawn / checked by
WS / PB
issue
Planning

date
July 2018
revision
P1

project
4 Bloomsbury Place
London, WC1A 2QA
client
The Bedford Estates

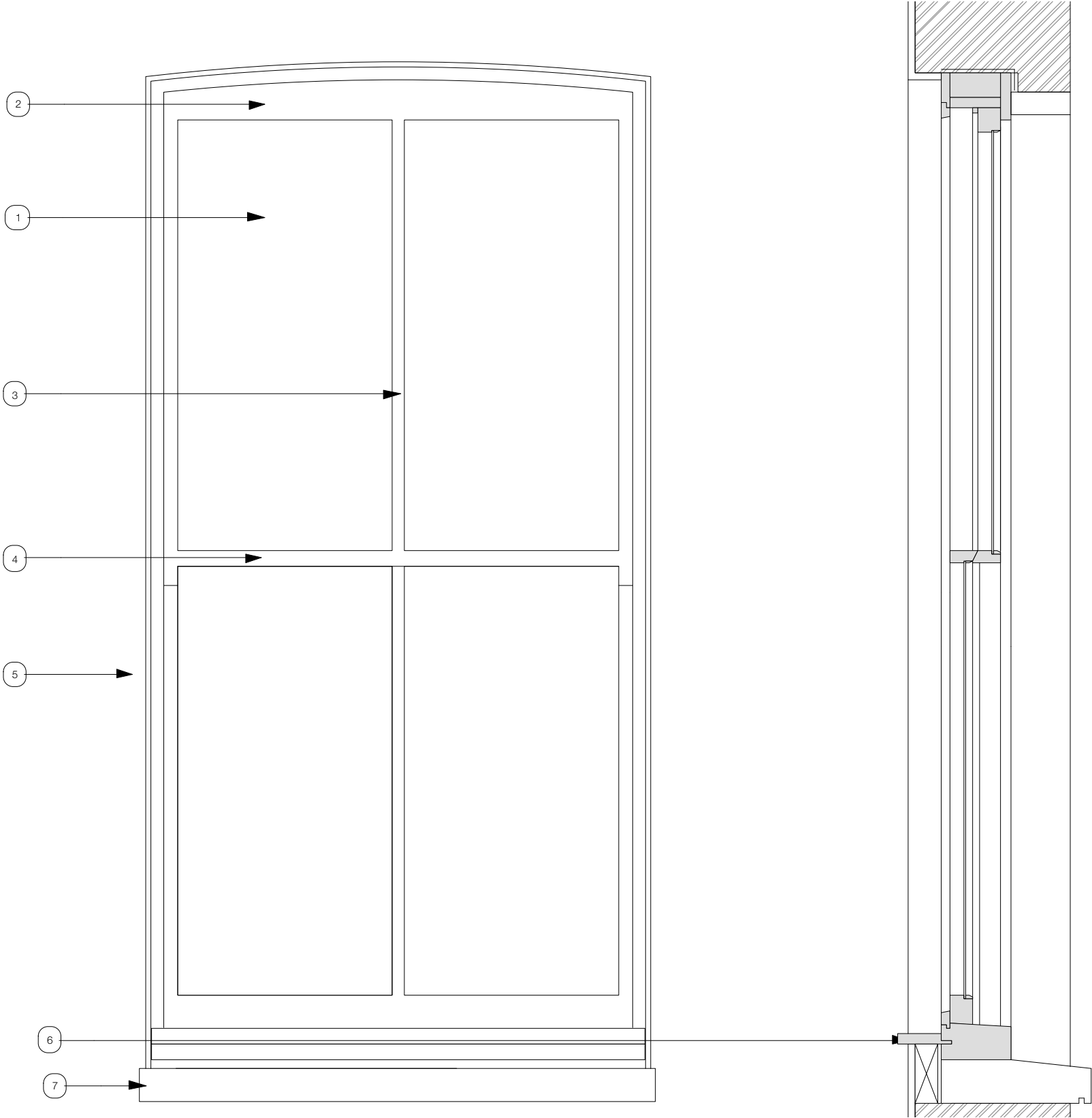
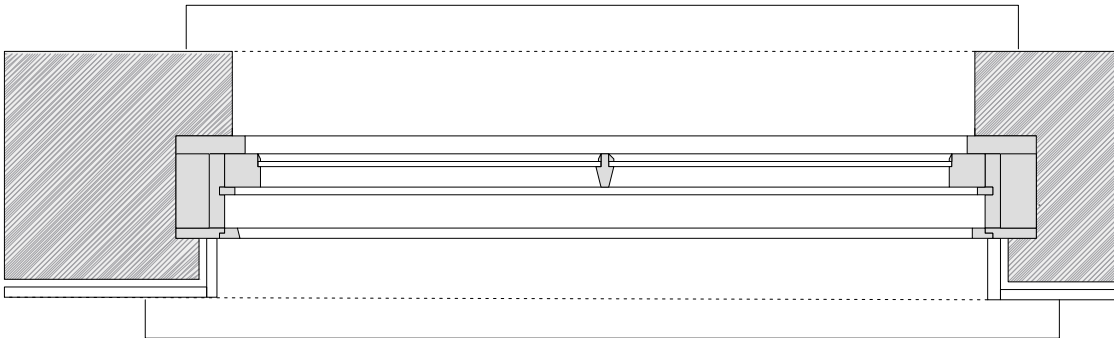
drawing title
6 over 6 sash window
drawing no.
257.04-920

NEW 2 OVER 2 TIMBER SASH WINDOW

W.G.05, W.G.08, W.G.09, W.G.10,
W.G.11, W.G.12
W.F.12, W.T.09

- 1 Single glazed unit
- 2 Top rail
- 3 Sash bar
- 4 Meeting rail
- 5 Sash stile
- 6 Timber cill
- 7 Concrete cill

Size of window to co-ordinate with brickwork



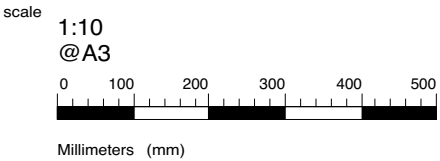
NOTES
Window sizes to be confirmed on site.
Drawing to be read in conjunction with 257.04 Window Schedule,Ironmongery Specification and NBS Specification

JOHANNA MOLINEUS ARCHITECTS

22 GREAT CHAPEL STREET
LONDON W1F 8FR
0207 734 8320
info@johannamolineus.com

© 2017 Johanna Molineus Architects Ltd
Do not scale dimensions from drawing.
Check all dimensions on site prior to commencement of work.
Do not copy or use this drawing without written consent.
Issue or publication does not convey or imply grant of licence.
If the drawing exceeds the quantities in any way the architects
are to be informed before work is commenced.
Drawing to be read in conjunction with structural engineer's
drawings and specification.

revisions



drawn / checked by
WS / PB
issue
Planning

date
July 2018
revision
P1

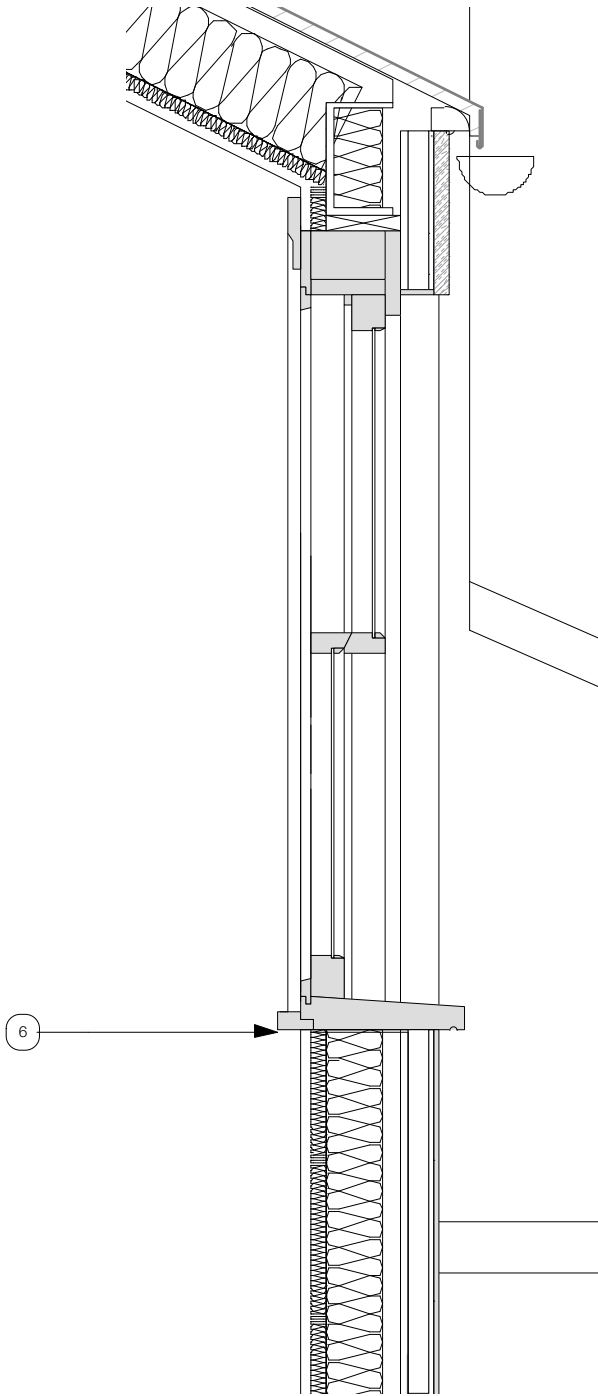
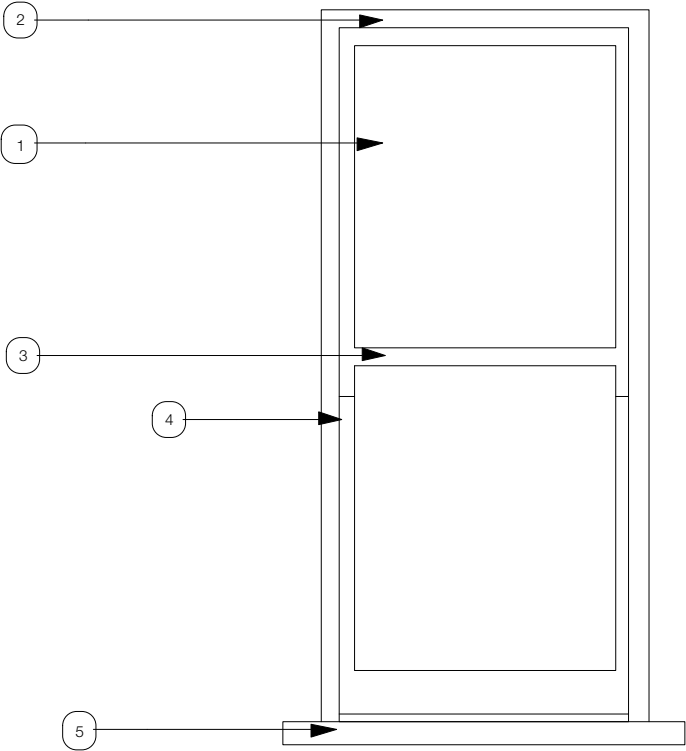
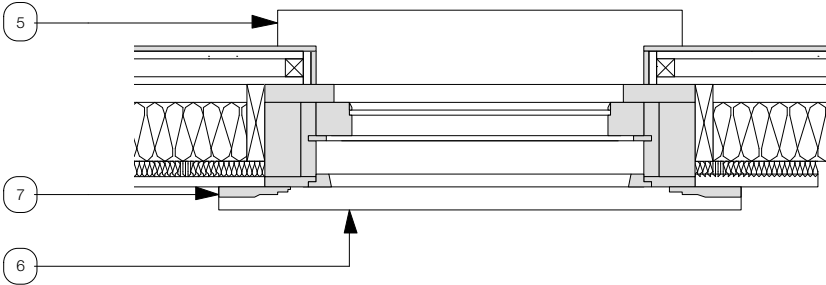
project
4 Bloomsbury Place
London, WC1A 2QA
client
The Bedford Estates

drawing title
2 over 2 sash window
drawing no.
257.04-921

NEW 1 OVER 1 TIMBER SASH WINDOW

W.F.10
W.F.11
W.F.13

- 1 Single glazed unit
- 2 Top rail
- 3 Meeting rail
- 4 Sash stile
- 5 Timber cill (external)
- 6 Timber cill (internal)
- 7 Timber architrave (internal)



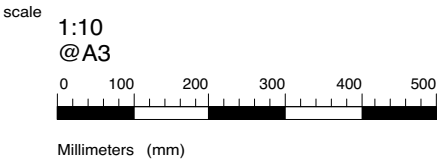
NOTES
Window sizes to be confirmed on site.
Drawing to be read in conjunction with 257.04 Window Schedule and Ironmongery Specification.

JOHANNA MOLINEUS ARCHITECTS

22 GREAT CHAPEL STREET
LONDON W1F 8FR
0207 734 8320
info@johannamolineus.com

© 2017 Johanna Molineus Architects Ltd
Do not scale dimensions from drawing.
Check all dimensions on site prior to commencement of work.
Do not copy or use this drawing without written consent.
Issue or publication does not convey or imply grant of licence.
If the drawing exceeds the quantities in any way the architects
are to be informed before work is commenced.
Drawing to be read in conjunction with structural engineer's
drawings and specification.

revisions



drawn / checked by
WS / PB
issue
Planning

date
July 2018
revision
P1

project
4 Bloomsbury Place
London, WC1A 2QA
client
The Bedford Estates

drawing title
1 over 1 sash window
drawing no.
257.04-922