

Tel: +44(0)208 222 8778  
Fax: +44(0)208 222 8575  
Email: [info@kpacoustics.com](mailto:info@kpacoustics.com)  
[www.kpacoustics.com](http://www.kpacoustics.com)

# **18 REGENT'S PARK ROAD, LONDON**

## **PLANNING COMPLIANCE REVIEW**

Report 18381.PCR.01

For:

Lionel Saph

18 Regent's Park Road

Primrose Hill

London

NW17TX

First Issue date: 10/12/2018			
Revision History			
Report 18381.PCR.01			
A		D	
B		E	
C		F	
Written by:		Checked by:	
Gonçalo Lemos MIOA MSEE Acoustic Consultant		Daniel Green MIOA Acoustic Consultant	
Approved by:			
		Kyriakos Papanagiotou MIOA Managing Director	
<b>Disclaimer</b>			
KP Acoustics Ltd. has used reasonable skill and care to complete this technical document, within the terms of its brief and contract with the resources devoted to it by agreement with the client. We disclaim any responsibility to the client and others in respect of any matters outside the stated scope. This report is confidential to the client and we accept no responsibility to third parties to whom this report, or any part thereof, is made known. KP Acoustics Ltd. accepts no responsibility for data provided by other bodies and no legal liability arising from the use by other persons of data or opinions contained in this report.			
KP Acoustics Ltd. 2018			

## Contents

1.0	INTRODUCTION .....	1
2.0	SITE SURVEYS .....	1
2.1	Site Description .....	1
2.2	Environmental Noise Survey Procedure .....	1
2.3	Measurement Positions .....	1
2.4	Equipment.....	3
3.0	RESULTS.....	3
3.1	Noise Survey.....	3
4.0	NOISE ASSESSMENT GUIDANCE.....	4
4.1	BS4142: 2014 “ <i>Methods for rating and assessing industrial and commercial sound</i> ” .....	4
4.2	Local Authority Guidance.....	5
4.3	Noise Emissions Criterion .....	5
5.0	NOISE IMPACT ASSESSMENT .....	6
5.1	Proposed Plant Installations .....	6
5.2	Objective Overview.....	6
5.3	BS8233 Assessment .....	7
6.0	CONCLUSION.....	8

### List of Attachments

18381. TH1	Environmental Noise Time History
18381. SP1	Indicative Site Plan
Appendix A	Glossary of Acoustics Terminology
Appendix B	Acoustic Calculations
Appendix C	Anti-Vibration Mounting Specification

## **1.0 INTRODUCTION**

KP Acoustics has been commissioned by Lionel Saph, 18 Regent's Park Road, Primrose Hill London, NW1 7TX, to undertake an environmental noise survey at 18 Regent's Park Road, London, NW1 7TX. The background noise levels measured will be used to determine daytime and night-time noise emission criteria for a condenser unit installation, in agreement with the planning requirements of The London Borough of Camden.

This report presents the overall methodology and results from the environmental survey, followed by calculations to demonstrate the feasibility of the plant unit installation to satisfy the emissions criterion at the closest noise-sensitive receiver. Mitigation measures will be outlined as appropriate.

## **2.0 SITE SURVEYS**

### **2.1 Site Description**

The site is bounded by Regent's Park Road to the South, existing residential properties to the West and East and residential gardens to the North. Initial inspection of the site revealed that the background noise profile at the monitoring location was typical of an urban cityscape environment, with the dominant source being road traffic noise from the surrounding roads.

### **2.2 Environmental Noise Survey Procedure**

A noise survey was undertaken on site as shown in Figure 2.1 and indicative site plan 18381.SP1. The choice of the position was based both on accessibility and on collecting representative noise data in relation to the nearest noise sensitive receiver relative to the proposed plant installation.

Continuous automated monitoring was undertaken for the duration of the survey between 27 November 2018 to 28 November 2018.

Weather conditions were generally dry with light winds and therefore suitable for the measurement of environmental noise. The measurement procedure complied with ISO 1996-2:2007 Acoustics '*Description, measurement and assessment of environmental noise - Part 2: Determination of environmental noise levels*'.

### **2.3 Measurement Positions**

Measurement positions are as described within Table 2.1 and shown within Figure 2.1.

	Description
<b>Noise Measurement Position 1 (MP.1)</b>	The meter was installed at top roof level to the North Elevation, as shown in 18381.SP1, at a distance of 2.5m above the top roof level
<b>Closest Noise Sensitive Receiver (NR.1)</b>	Nearest noise sensitive receiver to plant location

Table 2.1 Measurement position and description

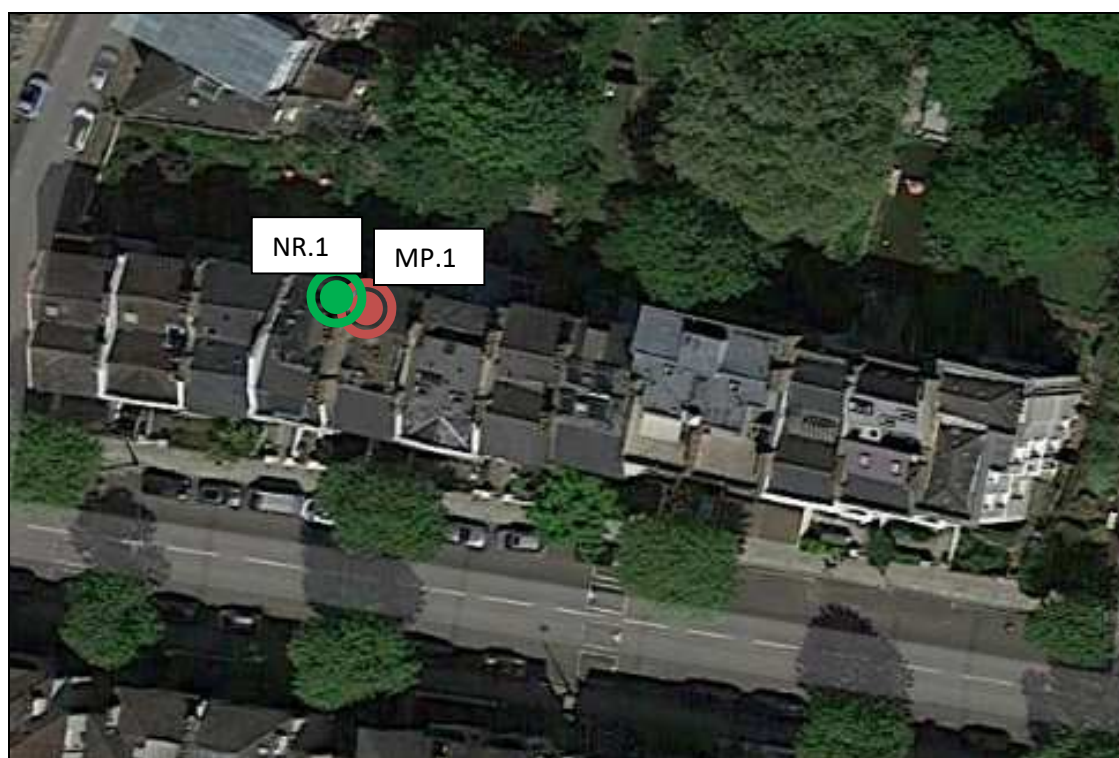


Figure 2.1 – Site Measurement position (Image Source: Google Maps)

## 2.4 Equipment

The equipment calibration was verified before and after use and no abnormalities were observed. The equipment used is described within Table 2.2.

Measurement instrumentation	Serial no.
Svantek Type 957 Class 1 Sound Level Meter	12399
Free-field microphone PCB 377B02	163412
Preamp Svantek 2v12L	33694
B&K Type 4231 Class 1 Calibrator	1897774
Svantek External windshield	N/A

**Table 2.2 Measurement instrumentation**

## 3.0 RESULTS

### 3.1 Noise Survey

The  $L_{Aeq}$ : 5min,  $L_{Amax}$ : 5min,  $L_{A10}$ : 5min and  $L_{A90}$ : 5min acoustic parameters were measured throughout the duration of the survey. Measured levels are shown as a time history in Figure 18381.TH1.

Minimum background noise levels and logarithmically averaged  $L_{Aeq}$  levels are shown in Table 3.1 for daytime and night-time.

	Minimum background noise level $L_{A90}$ dB(A)	Average ambient noise level $L_{Aeq}$ dB(A)
Daytime (07:00-23:00)	42	54
Night-time (23:00-07:00)	37	47

**Table 3.1 Minimum background noise levels and average ambient noise levels**

## 4.0 NOISE ASSESSMENT GUIDANCE

### 4.1 BS4142: 2014 “*Methods for rating and assessing industrial and commercial sound*”

British Standard BS4142:2014 ‘*Methods for rating and assessing industrial and commercial sound*’ describes a method for rating and assessing sound of an industrial and/or commercial nature, which includes:

- Sound from industrial and manufacturing processes
- Sound from fixed installations which comprise mechanical and electrical plant and equipment
- Sound from the loading and unloading of goods and materials at industrial and/or commercial premises, and
- Sound from mobile plant and vehicles that is an intrinsic part of the overall sound emanating from premises or processes.

This Standard compares the noise levels in terms of a  $L_{Aeq}$  for a one-hour period during the daytime (07:00 – 23:00 hours) and a fifteen-minute period during the night-time (23:00 – 07:00 hours) due to the noise source, the “Specific Noise Level”, with the existing background noise level in terms of an  $L_{A90}$  when the noise source is not operating.

The resultant background sound level is subtracted from the Rating Level to obtain an initial estimate of the impact.

- Typically, the greater this difference, the greater the magnitude of the impact.
- A difference of around +10 dB or more is likely to be an indication of a significant adverse impact, depending on the context.
- A difference of around +5 dB could be an indication of an adverse impact, depending on the context.

The lower the rating level is relative to the measured background sound level, the less likely it is that there will be an adverse impact. Where the rating level does not exceed the background sound level, this is an indication of the specific sound having a low impact, depending on the context.

The initial estimate of the impact may then be modified by taking consideration of the context in which the sound occurs.

#### 4.2 Local Authority Guidance

The criterion of The London Borough of Camden for noise emissions of new plant in this instance is as follows:

*“Noise generated by the new plant at a point 1 metre external to sensitive facades will be at least 5dB(A) less than the existing background measurement (LA90), expressed in dB(A) when all plant/equipment are in operation. Where it is anticipated that any plant/equipment will have a noise that has a distinguishable, discrete continuous note (whine, hiss, screech, hum) and/or if there are distinct impulses (bangs, clicks, clatters, thumps) special attention is given to reducing the noise levels from that piece of plant/equipment at any sensitive façade to at least 10dB(A) below the LA90, expressed in dB(A).”*

#### 4.3 Noise Emissions Criterion

As the proposed plant unit installation could be used at any time of the day or night, the criterion has been set as shown in Table 4.1 in order to comply with the above requirements.

Note that demonstrating compliance with the Local Authority’s guidance would inherently result in a low magnitude of impact with regards to the plant installation negatively affecting the amenity of the closest receiver, as per the guidance contained in BS4142:2014.

	<b>Night-time (23:00 to 07:00)</b>
Noise criterion at nearest residential receiver (10dB below minimum L <sub>A90</sub> )	27 dB(A)

**Table 4.1: Proposed Noise Emissions Criteria**



## 5.0 NOISE IMPACT ASSESSMENT

### 5.1 Proposed Plant Installations

It is understood that the proposed plant installation is comprised of the following unit:

- 1 No. Fujitsu AOYG18LAT3 Condenser Unit

The closest noise sensitive receiver to the proposed installation location has been identified as being a rear window of No. 20 Regent's Park Road, London, located approximately 3.5 metres from the proposed plant installation location. Note that the proposed plant unit would be out of line of site of the receiving window due to screening from the building envelope.

The sound pressure levels at 1 metre as provided by the manufacturer for the units are shown in Table 5.1.

Unit	Sound Pressure Level (dB) in each Frequency Band at 1m							
	63Hz	125Hz	250Hz	500Hz	1kHz	2kHz	4kHz	8kHz
Fujitsu AOYG18LAT3 (Cooling)	55	54	44	43	40	35	30	25

**Table 5.1 Manufacturers Sound Pressure Levels at 1m**

### 5.2 Objective Overview

Taking all acoustic corrections into consideration, the noise level contribution expected at the closest noise sensitive window from the condenser installation would be as shown in Table 5.2. Detailed calculations are shown in Appendix B.

Receiver	Criterion	Noise Level at 1m From the Closest Noise Sensitive Window
Top floor rear window of rear of No. 20 Regent's Park Road	27dB(A)	26dB(A)

**Table 5.2: Predicted noise level and criterion at nearest noise sensitive location**

As shown in Appendix B and Table 5.2, transmission of noise to the nearest sensitive windows due to the effects of the condenser unit installation satisfies the emissions criterion of BS4142:2014 and the Local Authority.

### 5.3 BS8233 Assessment

The highest value of 26dB(A) is to be considered externally at 1m from the receiving window. Windows may be closed or partially closed leading to further attenuation, as follows.

Further calculations have been undertaken to assess whether the noise emissions from the plant unit installation would be expected to meet the recognised British Standard recommendations, in order to further ensure the amenity of nearby noise sensitive receivers.

British Standard 8233:2014 '*Sound insulation and noise reduction for buildings – Code of Practice*' gives recommendations for acceptable internal noise levels in residential properties. Assuming worst case conditions, of the closest window being for a bedroom, BS8233:2014 recommends 30dB(A) for internal resting/sleeping conditions during night-time hours.

With a calculated external level of 26dB(A), the residential window itself would need to provide an additional nominal attenuation in order for the recommended internal noise conditions to be achieved. According to BS8233:2014, even a partially open window offers 10-15dB attenuation, thus leading to a further reduced interior noise level.

Receiver	Design Range – <i>For resting/sleeping conditions in a bedroom during night-time, in BS8233:2014</i>	Noise Level at Receiver (due to plant installation)
Top floor rear window of rear of No. 20 Regent's Park Road	30dB(A)	Non-significant

**Table 5.3 Noise levels and criteria inside nearest residential space**

Predicted levels are shown in Table 5.3, with detailed calculations shown in Appendix B. It can therefore be stated that, as well as complying with the requirements of The London Borough of Camden, the noise emissions from the plant unit installation would be expected to comfortably meet the most stringent recommendations of BS8233: 2014.

## 6.0 CONCLUSION

An environmental noise survey has been undertaken at 18 Regent's Park Road, London, NW1 7TX, by KP Acoustics Ltd between 27 November 2018 and 28 November 2018. The results of the survey have enabled criteria to be set for noise emissions.

Using manufacturer noise data, noise levels are predicted at the nearby noise sensitive receivers for compliance with current requirements.

Calculations show that noise emissions from the condenser unit installation would meet the requirements of The London Borough of Camden. The proposed plant installation would result in a low magnitude of impact and an indication of low adverse impact on the closest residential receiver, in accordance with BS4142:2014.

Further calculations have been undertaken with regards to the relevant British Standard and it has been ensured that the amenity of nearby residential receivers will be protected.

18 Regent's Park Road, London, NW1 7TX  
Environmental Noise Time History  
From 27 November 2018 To 28 November 2018

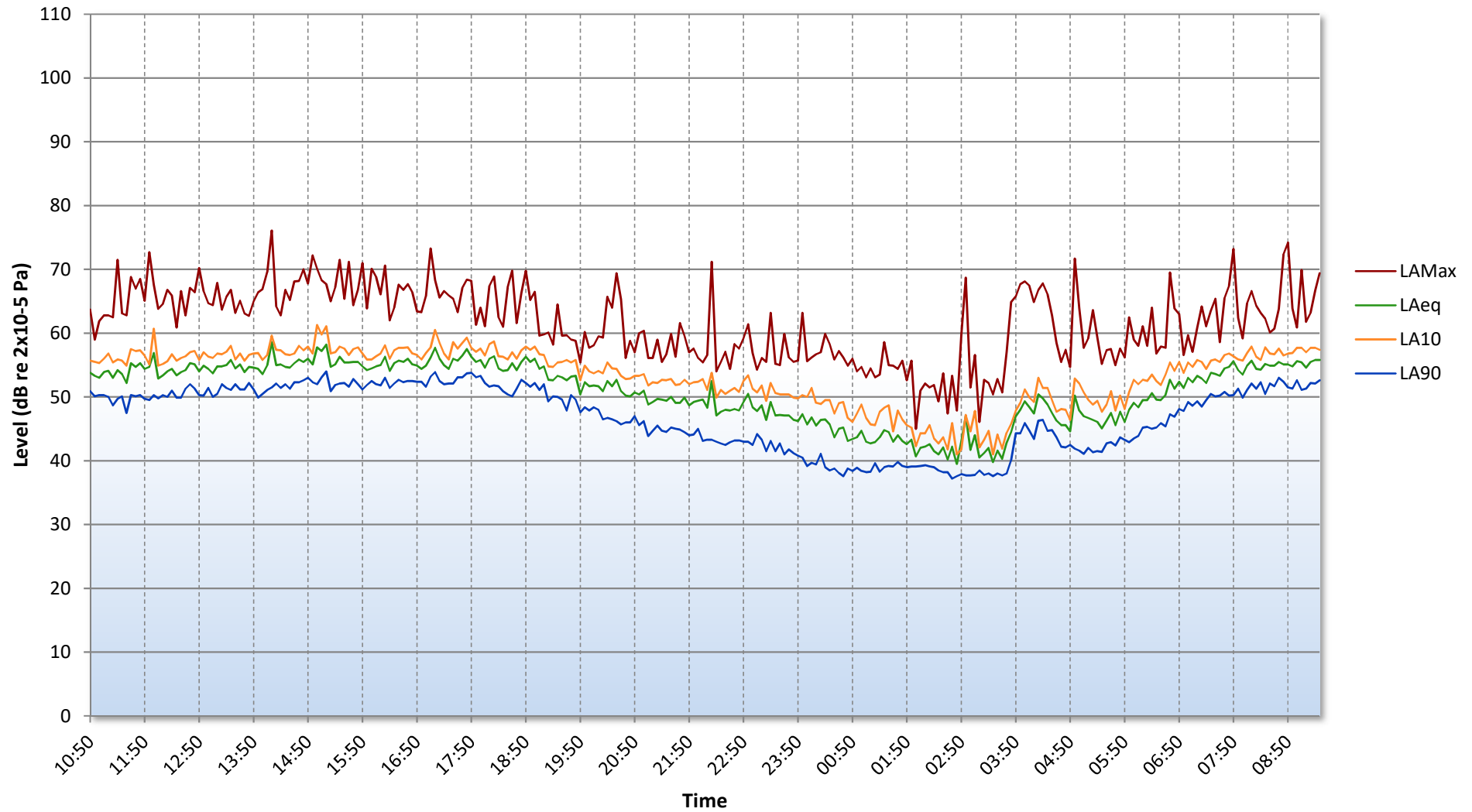
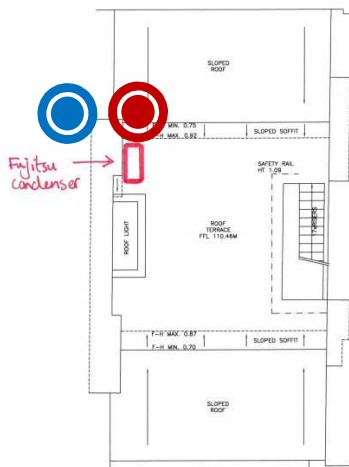
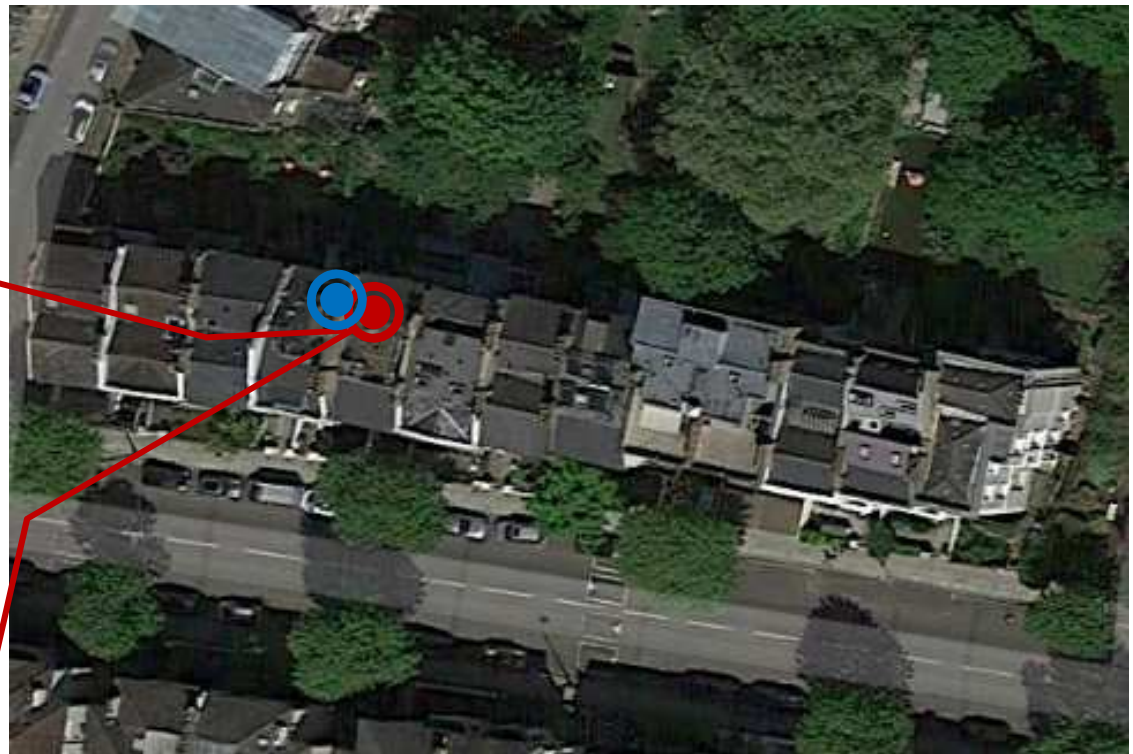
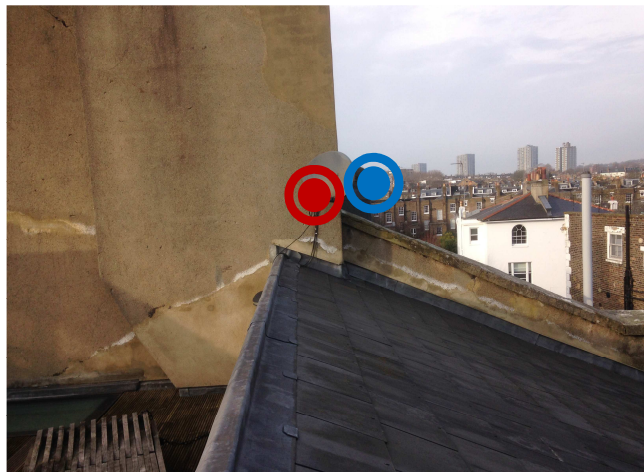




Figure 18381.TH1



-  Noise Survey Monitoring Position
-  Nearest Noise Sensitive Receiver

**Title:**  
Indicative site plan showing noise monitoring position

**Date:** 10 December 2018

**FIGURE 18381.SP1**



## GENERAL ACOUSTIC TERMINOLOGY

### Decibel scale - dB

In practice, when sound intensity or sound pressure is measured, a logarithmic scale is used in which the unit is the 'decibel', dB. This is derived from the human auditory system, where the dynamic range of human hearing is so large, in the order of  $10^{13}$  units, that only a logarithmic scale is the sensible solution for displaying such a range.

### Decibel scale, 'A' weighted - dB(A)

The human ear is less sensitive at frequency extremes, below 125Hz and above 16Khz. A sound level meter models the ears variable sensitivity to sound at different frequencies. This is achieved by building a filter into the Sound Level Meter with a similar frequency response to that of the ear, an A-weighted filter where the unit is dB(A).

### $L_{eq}$

The sound from noise sources often fluctuates widely during a given period of time. An average value can be measured, the equivalent sound pressure level  $L_{eq}$ . The  $L_{eq}$  is the equivalent sound level which would deliver the same sound energy as the actual fluctuating sound measured in the same time period.

### $L_{10}$

This is the level exceeded for no more than 10% of the time. This parameter is often used as a "not to exceed" criterion for noise.

### $L_{90}$

This is the level exceeded for no more than 90% of the time. This parameter is often used as a descriptor of "background noise" for environmental impact studies.

### $L_{max}$

This is the maximum sound pressure level that has been measured over a period.

### Octave Bands

In order to completely determine the composition of a sound it is necessary to determine the sound level at each frequency individually. Usually, values are stated in octave bands. The audible frequency region is divided into 11 such octave bands whose centre frequencies are defined in accordance with international standards. These centre frequencies are: 16, 31.5, 63, 125, 250, 500, 1000, 2000, 4000, 8000 and 16000 Hertz.

Environmental noise terms are defined in BS7445, *Description and Measurement of Environmental Noise*.

## APPLIED ACOUSTIC TERMINOLOGY

### Addition of noise from several sources

Noise from different sound sources combines to produce a sound level higher than that from any individual source. Two equally intense sound sources operating together produce a sound level which is 3dB higher than a single source and 4 sources produce a 6dB higher sound level.

### Attenuation by distance

Sound which propagates from a point source in free air attenuates by 6dB for each doubling of distance from the noise source. Sound energy from line sources (e.g. stream of cars) drops off by 3dB for each doubling of distance.

### Subjective impression of noise

Hearing perception is highly individualised. Sensitivity to noise also depends on frequency content, time of occurrence, duration of sound and psychological factors such as emotion and expectations. The following table is a guide to explain increases or decreases in sound levels for many scenarios.

Change in sound level (dB)	Change in perceived loudness
1	Imperceptible
3	Just barely perceptible
6	Clearly noticeable
10	About twice as loud

### Transmission path(s)

The transmission path is the path the sound takes from the source to the receiver. Where multiple paths exist in parallel, the reduction in each path should be calculated and summed at the receiving point. Outdoor barriers can block transmission paths, for example traffic noise. The effectiveness of barriers is dependent on factors such as its distance from the noise source and the receiver, its height and construction.

### Ground-borne vibration

In addition to airborne noise levels caused by transportation, construction, and industrial sources there is also the generation of ground-borne vibration to consider. This can lead to structure-borne noise, perceptible vibration, or in rare cases, building damage.

### Sound insulation - Absorption within porous materials

Upon encountering a porous material, sound energy is absorbed. Porous materials which are intended to absorb sound are known as absorbents, and usually absorb 50 to 90% of the energy and are frequency dependent. Some are designed to absorb low frequencies, some for high frequencies and more exotic designs being able to absorb very wide ranges of frequencies. The energy is converted into both mechanical movement and heat within the material; both the stiffness and mass of panels affect the sound insulation performance.

## APPENDIX B

18 Regent's Park Road, London, NW1 7TX

## PLANT NOISE EMISSIONS CALCULATIONS

Source: Proposed Plant Installation at Roof level Receiver: Nearest Noise Sensitive receiver, as shown in SP1	Frequency, Hz								dB(A)
	63	125	250	500	1k	2k	4k	8k	
Manufacturers Sound Pressure Levels									
1No. Fujitsu AOYG18LAT3 (Sound Pressure Level @1m) (Cooling)	55	54	44	43	40	35	30	25	
Correction due to surface reflections (1), dB	3	3	3	3	3	3	3	3	
Minimum attenuation due to building envelope and screening, dB	-8	-9	-10	-12	-14	-14	-14	-14	
Minimum attenuation provided by distance (3.5m), dB	-11	-11	-11	-11	-11	-11	-11	-11	
<b>Sound Pressure Level at Receiver, dB</b>	<b>39</b>	<b>37</b>	<b>26</b>	<b>23</b>	<b>18</b>	<b>13</b>	<b>8</b>	<b>3</b>	<b>26</b>



## ANTI-VIBRATION MOUNTING SPECIFICATION REFERENCE DOCUMENT

### 1.0 General

- 1.1 All mountings shall provide the static deflection, under the equipment weight, shown in the schedules. Mounting selection should allow for any eccentric load distribution or torque reaction, so that the design deflection is achieved on all mountings under the equipment, under operating conditions.
- 1.2 It is the supplier's responsibility to ensure that all mountings offered are suitable for the loads, operating and environmental conditions which will prevail. Particular attention should be paid to mountings which will be exposed to atmospheric conditions to prevent corrosion.
- 1.3 All mountings shall be colour coded, or otherwise marked, to indicate their load capacity, to facilitate identification during installation.

Where use of resilient supports allows omission of pipe flexible connections for vibration/noise isolation, it shall be the Mechanical Service Consultant's or Contractor's responsibility to decide whether such devices are required to compensate for misalignment or thermal strain.

### 2.1 Type A Mounting (Caged Spring Type)

- 2.1.1 Each mounting shall consist of cast or fabricated telescopic top and bottom housings enclosing one or more helical steel springs as the principle isolation elements, and shall incorporate a built-in levelling device. The housing should be designed to permit visual inspection of the springs after installation, i.e. the spring must not be totally enclosed.
- 2.1.2 The springs shall have an outside diameter of not less than 75% of the operating height, and be selected to have at least 50% overload capacity before becoming coil-bound.
- 2.1.3 The bottom plate of each mounting shall have bonded to it a rubber/neoprene pad designed to attenuate any high frequency energy transmitted by the springs.
- 2.1.4 Mountings incorporating snubbers or restraining devices shall be designed so that the snubbing, damping or restraining mechanism is capable of being adjusted to have no significant effect during the normal running of the isolated machine.
- 2.1.5 All nuts, bolts or other elements used for adjustment of a mounting shall incorporate locking mechanisms to prevent the isolator going out of adjustment as a result of vibration or accidental or unauthorised tampering.

### 2.2 Type B Mounting (Open Spring Type)

- 2.2.1 Each mounting shall consist of one or more helical steel springs as the principal isolation elements, and shall incorporate a built-in levelling device.
- 2.2.2 The springs shall be fixed or otherwise securely located to cast or fabricated top and bottom plates, shall have an outside diameter of not less than 75% of the operating height, and shall be selected to have at least 50% overload capacity before becoming coil-bound.
- 2.2.3 The bottom plate shall have bonded to it a rubber/ neoprene pad designed to attenuate any high frequency energy transmitted by the springs.

## **2.3 Type C Mounting (Rubber/Neoprene Type)**

Each mounting shall consist of a steel top plate and base plate completely embedded in oil resistant rubber/neoprene. Each mounting shall be capable of being fitted with a levelling device, and should have bolt holes in the base plate and a threaded metal insert in the top plate so that they can be bolted to the floor and equipment where required.

## **3.0 Plant Bases**

### **3.1 Type A Bases (A.V. Rails)**

An A.V. Rail shall comprise a steel beam with two or more height-saving brackets. The steel sections must be sufficiently rigid to prevent undue strain in the equipment and if necessary should be checked by the Structural Engineer.

### **3.2 Type B Bases (Steel Plant Bases)**

Steel plant bases shall comprise an all-welded steel framework of sufficient rigidity to provide adequate support for the equipment, and fitted with isolator height saving brackets. The frame depth shall be approximately 1/10 of the longest dimension of the equipment with a minimum of 150 mm. This form of base may be used as a composite A.V. rail system.

### **3.3 Type C Bases (Concrete Inertia Base: for use with steel springs)**

These shall consist of an all-welded steel pouring frame-work with height saving brackets, and a frame depth of approximately 1/12 of the longest dimension of the equipment, with a minimum of 100 mm. The bottom of the pouring frame should be blanked off, and concrete (2300 kg/m<sup>3</sup>) poured in over steel reinforcing rods positioned 35 mm above the bottom. The inertia base should be sufficiently large to provide support for all parts of the equipment, including any components which over-hang the equipment base, such as suction and discharge elbows on centrifugal pumps.