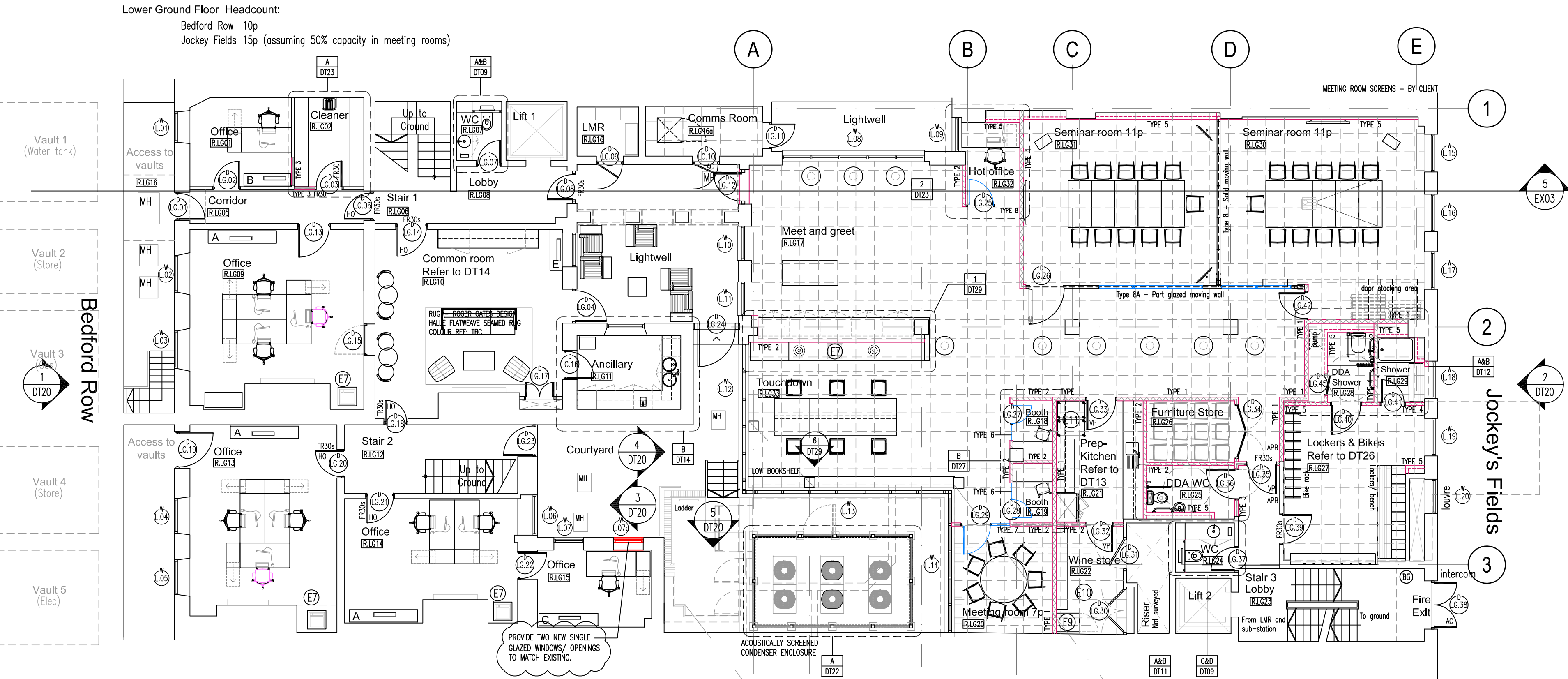
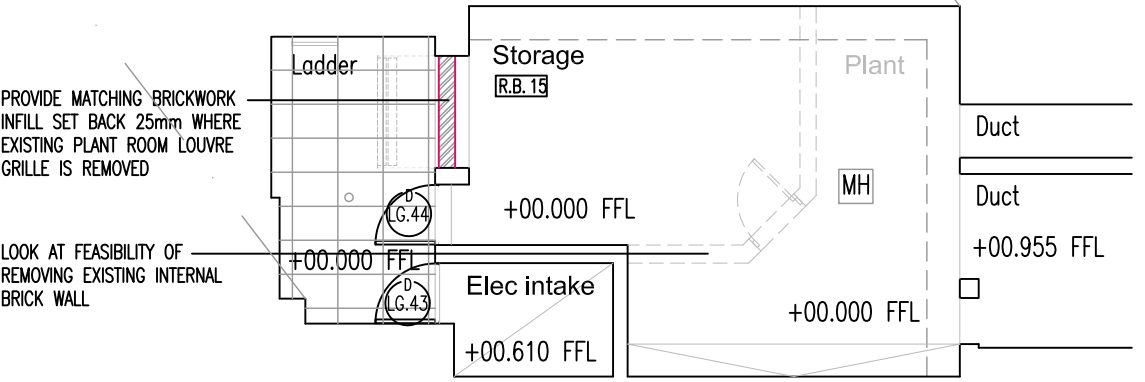


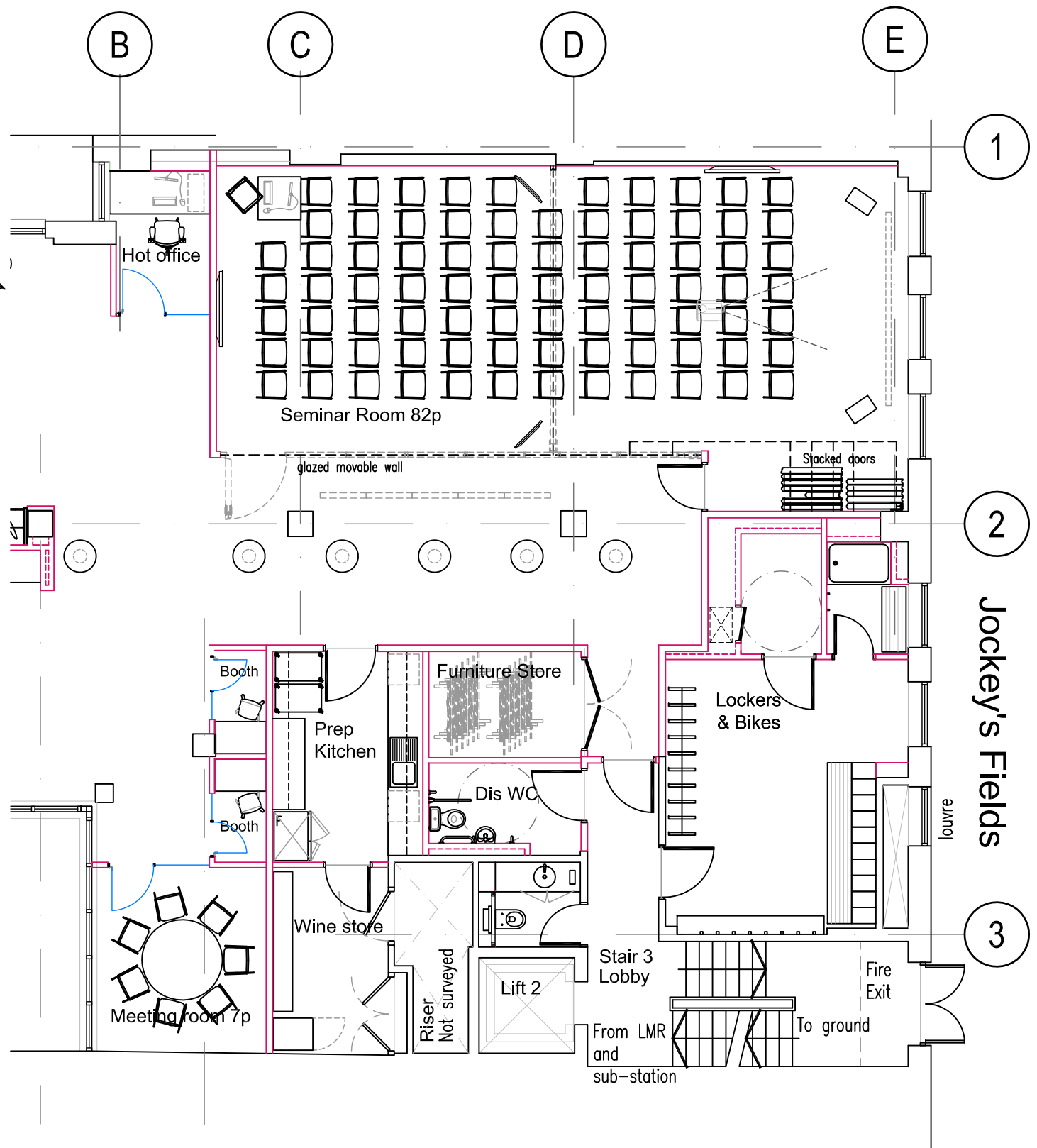
**A** Ground floor plan  
Scale 1:100



**B** Lower ground floor plan  
Scale 1:100



**C** Basement plant room  
Scale 1:100



**Seminar Suite - Theatre layout**  
Scale 1:100

GENERAL NOTES:

- BASE BUILD DRAWINGS PROVIDED BY OTHERS, CHECK SURVEY HAS NOT BEEN UNDERTAKEN.
- FOR DETAILED BUILDING REGULATIONS NOTES AND CONSTRUCTION INFORMATION REFER TO MANSFIELD MONK LTD DRAWING DT01.
- FOR MEP DRAWINGS REFER TO MEP-PRO BUILDING SERVICES CONSULTANTS DRAWINGS AND SPECIFICATIONS.
- DRAWINGS AND DETAILS TO BE READ IN CONJUNCTION WITH THE EQUUS PARTNERSHIP ACOUSTIC CONSULTANTS SPECIFICATION AND RECOMMENDATIONS. ARCHITECTURAL DRAWING PACKAGE TO BE READ IN CONJUNCTION WITH THE STRUCTURAL ENGINEERS REPORT/ DRAWINGS FOR 7 BEDFORD ROW. CONTRACTOR TO ALLOW FOR UNDERTAKING ANY NECESSARY REMEDIAL/ REPAIR WORKS FOLLOWING THE STRUCTURAL MONITORING AND OPENING UP WORKS.

**PARTITION LEGEND**

TYPE 1 SOUND ATTENUATING PARTITION - SLAB TO SLAB

TYPE 2 STANDARD PARTITION - RFL TO 200mm ABOVE SCL  
(where noted provide Acoustic galls to floor & ceiling voids/ use MR boards for wet areas)

TYPE 3 60 min FIRE RATED PARTITION - SLAB TO SLAB  
(30min Fire Rating)

TYPE 4 SOUND ATTENUATING PARTITION - RFL TO +200mm ABOVE SCL  
(Use moisture resistant boards for wet areas)

TYPE 5 INDEPENDENT WALL LINING - RFL TO U/S SOL OR SOFFIT (TO SUIT)

TYPE 6 SINGLE GLAZING - RAISED FLOOR U/S CEILING LEVEL

TYPE 7 DOUBLE GLAZED - RAISED FLOOR U/S CEILING LEVEL

TYPE 8A/8B STYLE PARTITIONS DORMA ACOUSTIC MOVEABLE WALLS - FLOOR TO CEILING SYSTEM WITH ACOUSTIC Baffles IN FLOOR AND CEILING VOIDS UNDERTAKEN BY MANUFACTURER.  
8A: 52WdB GLASS & 57WdB SOLID + 100mm Dense (18kg/m<sup>3</sup>) RFL & SCL void baffles

**NOTES FEATURE CEILING**

NOTES NEW PAINTED SAND/ CEMENT RENDER FINISH TO EXISTING BROCKWORK

**DOORS**

NOTES EXISTING DOOR

NEW TIMBER DOOR (SHOWN SOLID)

NOTES NEW SINGLE GLAZED DOOR

NOTES NEW DOUBLE GLAZED DOOR

H.O. = MAGNETIC HOLD OPEN DEVICE

V.P. = VISION PANEL TO DOOR

A.C. = ACCESS CONTROL

F.E. = FIRE EXTINGUISHER

A.P.B. = AUTOMATIC PUSH BUTTON TO OPEN

(G.01) = DOOR NUMBER

(G.02) = WINDOW NUMBER

(R.01) = ROOM NUMBER

ALONGSIDE "PUSH BUTTON" TO EXIT.

For detailed construction notes refer to drawing no. DT01

**Equipment schedule**

(E) MULTI-FUNCTION DEVICE BLACK AND WHITE

(E) DESKTOP PRINTER

(E) MULTI-FUNCTION DEVICE COLOUR

(E) DOCUMENT TROLLEY 750x550x1350 (DkWt)

(E) SCANNING STATION

(E) WINE FRIDGE

(E) FRANKING MACHINE

(E) WINE RACKING/ STORAGE

(E) POST SCALES

(E) FOOD TROLLEY

(E) ENVELOPE INSERTER

(E) 126 PIGEON HOLES (5x110mm high)

**RAISED ACCESS FLOOR**

CONTRACTOR TO SURVEY EXISTING RAISED ACCESS FLOOR AND ADVISE OF SUITABILITY TO RETAIN AND RE-USE. FLOOR GRID LAYOUT IS INDICATIVE ONLY AND SUBJECT TO FULL SURVEY.

REFER TO MEPRO LT MECHANICAL & ELECTRICAL CONSULTANTS DRAWINGS & SPECIFICATION FOR TYPE, LOCATION AND QUANTITIES OF POWER/DATA POINTS.

CONTRACTOR TO ENSURE RAISED FLOOR VOID FIRE BARRIERS ARE INSTALLED EVERY 20m IN ACCORDANCE WITH BUILDING REGULATIONS REQUIREMENTS.

A		LC	Blocking up of existing window removed from proposals.	24.01.19
-		LC	Issued for Tender.	11.10.18
Rev.	Drawn	Description	Date	



Client	Chambers 7BR		
Project	7 Bedford Row, London WC1R 4BS		
Drawing	Proposed Lower Ground & Ground Floor General Arrangement Plans		
Drawing Status	TENDER		
Scale	1:100@A1	Cad file	-2332 GALG-OG
Drawn by	LC	Project no.	172332
Checked by	JM	Drawing no.	GALG-OG
Date	SEPT 2018	Revision	A