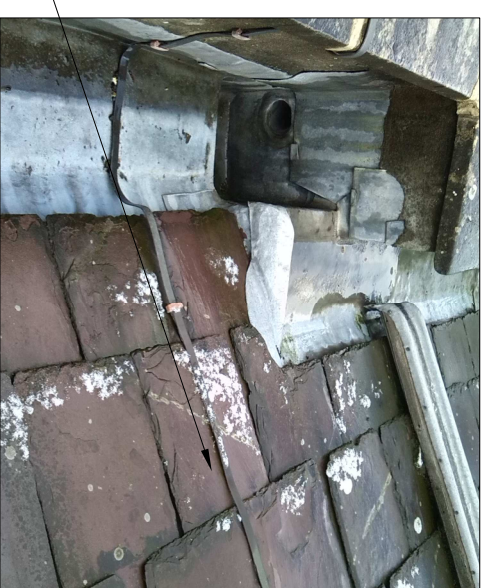
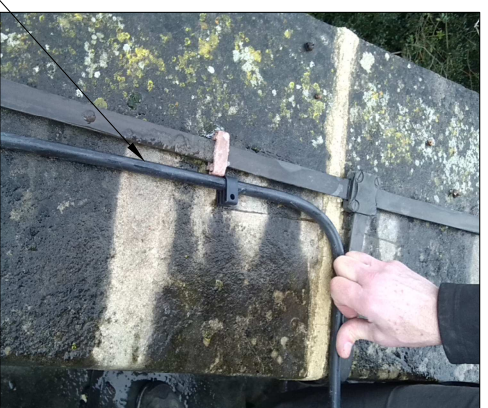
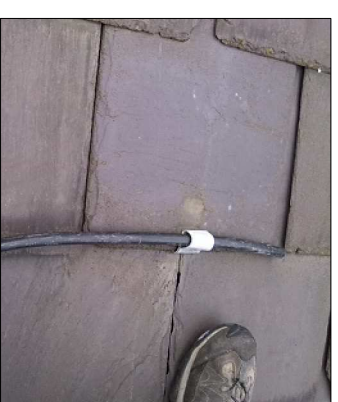


THE CABLE RUNS WILL FOLLOW THE LINE OF THE EXISTING LIGHTING CONDUCTORS. OVER SLATES FIXINGS WILL BE LEAD CLIPS NAILED TO THE BATTENS BELOW THE SLATES. FIXINGS ON THE STONE PARAPETS WILL BE PLASTIC CLIPS SCREWED TO THE COPING STONE WITH 3MM DIAMETERE SCREWS IN RAWLPLUGS. WHEN THE CABLE IS REMOVED THE HOLES WILL BE FITTED WITH COPPER CAPS OR FILLED WITH MOLTEN LEAD.



GENERAL NOTES:
 THIS DRAWING IS COPYRIGHT OF LOVE ARCHITECTURE LTD. THIS DRAWING MUST BE READ IN CONJUNCTION WITH THE SPECIFICATION AND ALL OTHER RELEVANT DOCUMENTATION AND DRAWINGS. LOVE ARCHITECTURE ACCEPTS NO LIABILITY FOR ANY EXPENSE, LOSS OR DAMAGE CAUSED BY ANY VARIATION MADE TO THIS DRAWING OR IN THE EXECUTION OF THE WORK TO WHICH IT RELATES WHICH HAS NOT BEEN REFERRED TO THEM AND THEIR APPROVAL OR DISEMPLOYMENT FROM THIS DRAWING OR THE COMPUTER DIGITAL DATA, ONLY FIGURED DIMENSIONS ARE TO BE USED, IF IN DOUBT ASK.

To be read in conjunction with drawing E200

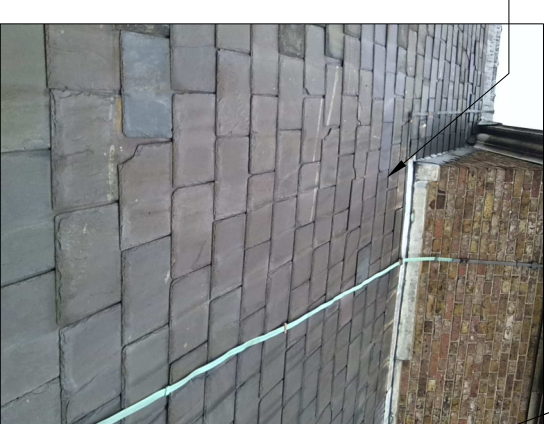


2 TYPICAL CABLE FIXING WITH SLATE
 SCALE: NTS



1 CABLE ROUTE AS PROPOSED

SCALE: NTS - Cable route shown in red



PLANNING APPLICATION

Rev	Notes	dd/mm/yy	By	Checked

Do not scale from this drawing. Check all dimensions on site

LOVE ARCHITECTURE
 59 Lambeth Walk, Vauxhall, SE11 4JX
 Tel: 020 7693 4890
 Email: admin@lovearchitecture.com
 Web: www.lovearchitecture.com



Client: HAMPSTEAD PARISH CURCH
 Project: PV PANEL ARRAY

Title: AS PROPOSED MAIN ROOF CABLE RUN IMAGES

Date: 01/2019	Drawn By: ST	Checked: BL
---------------	--------------	-------------

Project Ref: 761	Drawing Type & No: E701	Status & Revision: P00
------------------	-------------------------	------------------------