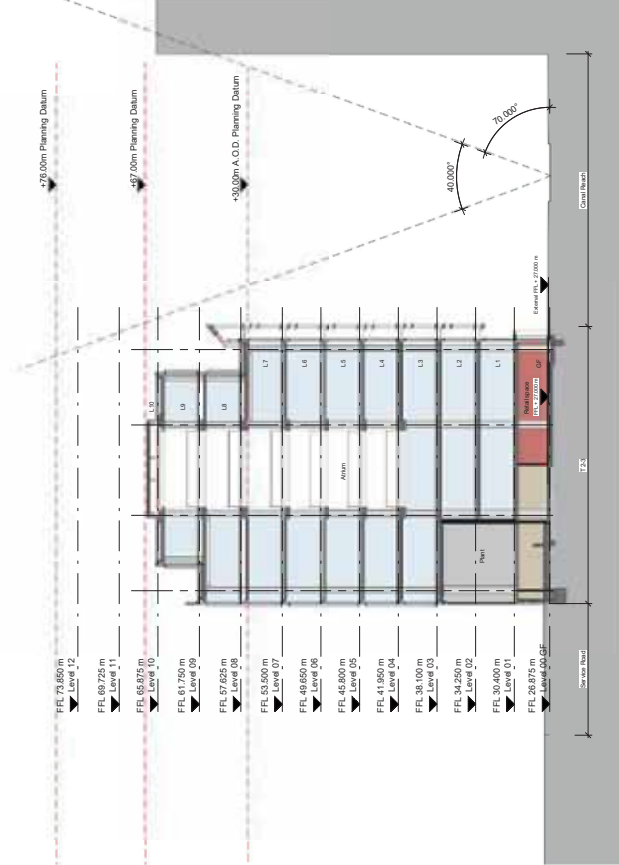


Atrium Block N1



Atrium Block N2

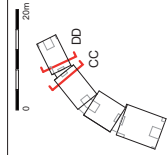


Revisions
 01. 181218 Issued for Planning
 02. 181218 Issued for Planning

By
 CJK
 SJK
 SJK

Notes

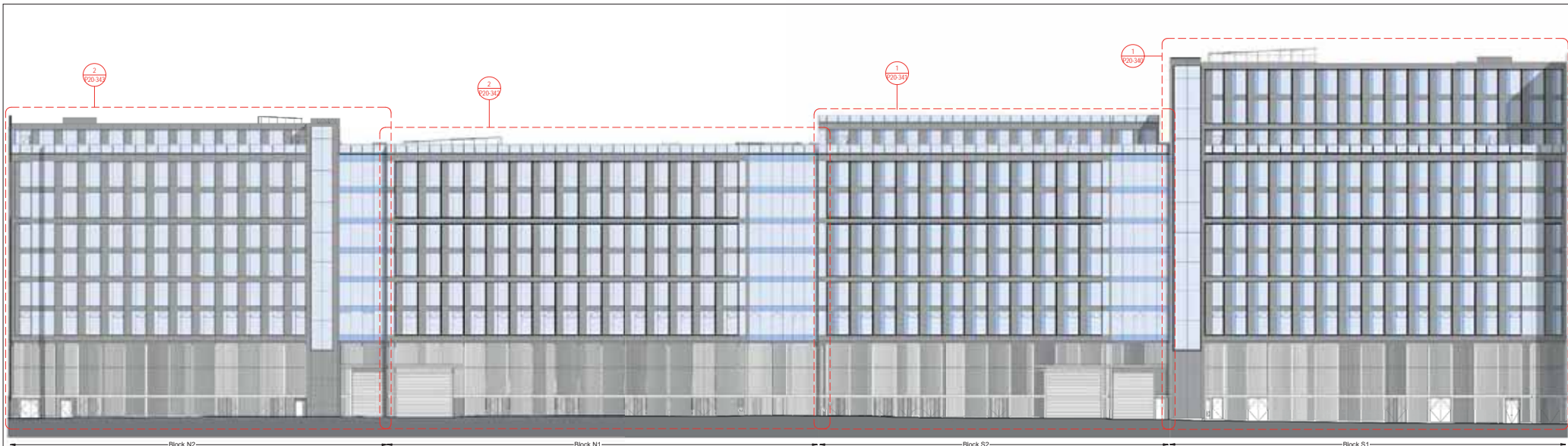
| Key | Notes |
|----------|--------------------------------------|
| [Symbol] | Offices |
| [Symbol] | Lobbies/Corries |
| [Symbol] | Office Reception/Reception Cells |
| [Symbol] | Sanitary |
| [Symbol] | Plant Room |
| [Symbol] | Cycle Store/Changing/Showers |
| [Symbol] | Roof Space |
| [Symbol] | Reserved Matters Submission Boundary |
| [Symbol] | T213 Demise |



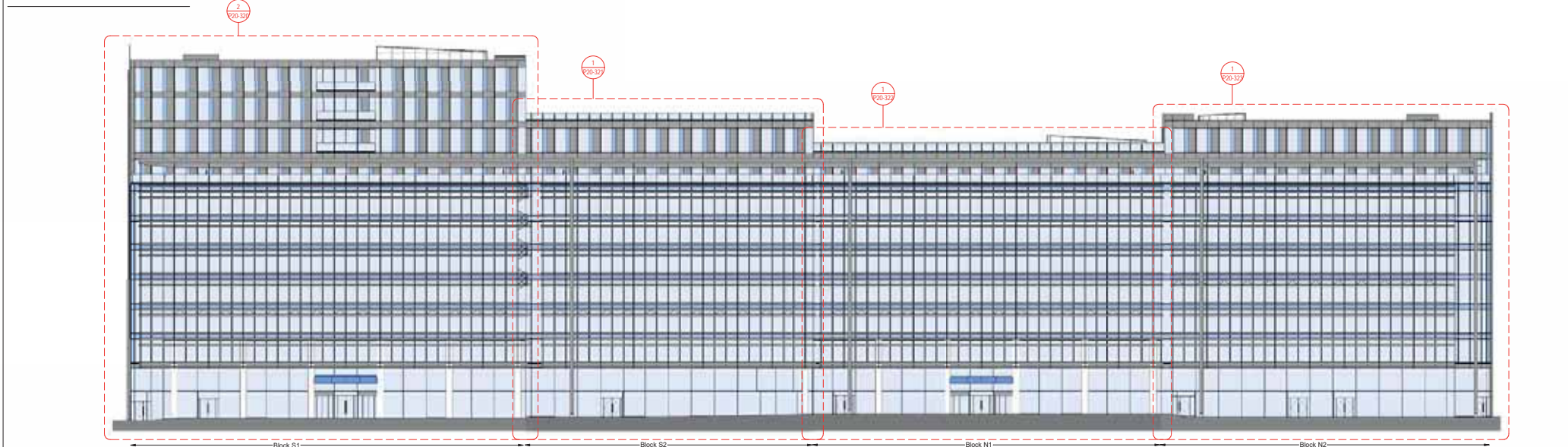
BENNETTS ASSOCIATES
 1 Ravenshoe Place, London EC1V 7NL
 T +44(0)207 5933300 - www.bennettsassociates.com
 For more information, please contact us on 020 7593 3300

Project
 Site T2 KXC
 Kings Cross Central Partnership Ltd.
 Drawing Title
 Section CC and DD

Project No. 1503
 Drawing Number
 R0C1-2-001-AA1503-P20-201
 Revision
 02
 Scale @ A1
 1: 250
 Scale @ A3
 1: 250
 Revision Date
 181219
 WJ/KAC



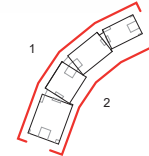
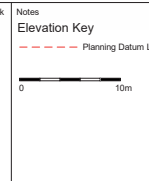
1- West Elevation



2- East Elevation

| Revisions | By | Chk | Revisions |
|-------------------------------|----|-----|-----------|
| 01 160415 Issued for Planning | SD | MB | |
| 02 181219 Issued for Planning | BH | SL | |

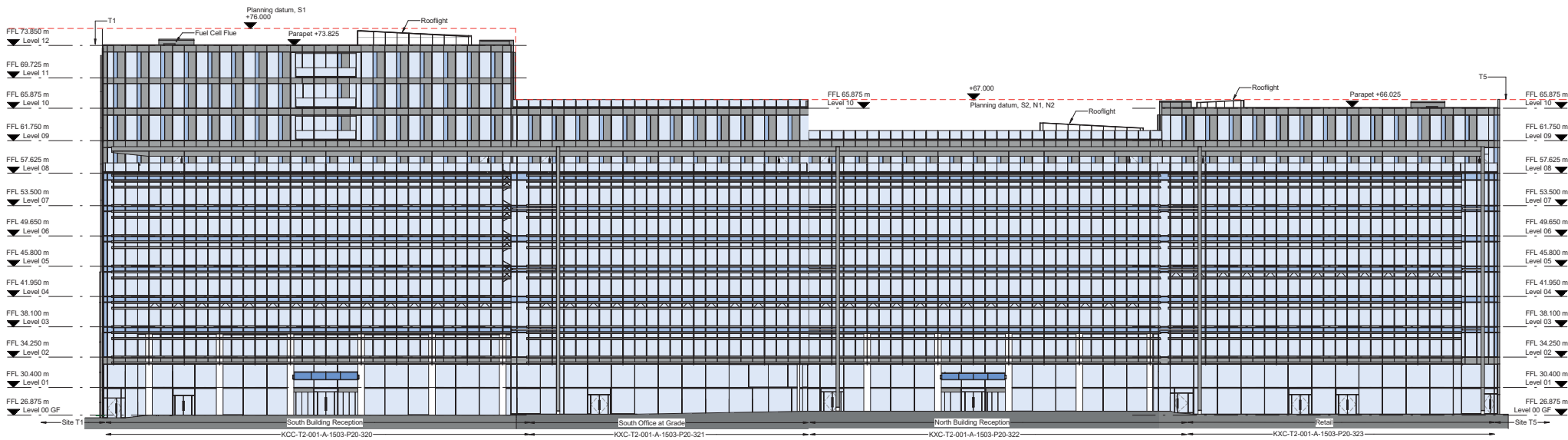
| By | Chk | Notes |
|----|-----|---------------------------|
| | | Elevation Key |
| | | --- Planning Datum Levels |



BENNETTS ASSOCIATES
 1 Rawstorne Place, London EC1V 7NL
 T +44(0)207 5213300 • www.bennettsassociates.com
 E mail@bennettsassociates.com
For Bennetts Associates' electronic information reuse disclaimer - www.bennettsassociates.com/info/mediasite/

Project
Site T2 KXC
 Kings Cross Central Partnership Ltd.
 Drawing Title
Elevations Tiles Identification

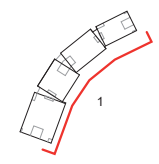
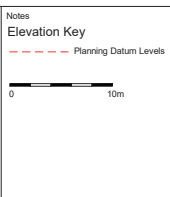
Project No. 1503
 Drawing Number
KXC-T2-001-A-1503-P20-300
 Revision
02
 Scale @ A3
 1 : 500
 Scale @ A1
 1 : 250
 Revision Date
 181219
 YY MM DD



1- East Elevation

| Revisions | By | Chk | Revisions | By | Chk | Notes |
|---------------------------------|----|-----|-----------|----|-----|-------|
| 01 16/04/15 Issued for Planning | SD | MB | | | | |
| 02 18/12/19 Issued for Planning | BH | SL | | | | |

| By | Chk | Revisions |
|----|-----|-----------|
| | | |



BENNETTS ASSOCIATES

1 Rawstone Place, London EC1V 7NL
 T +44(0)207 5203300 • www.bennettsassociates.com
 E mail@bennettsassociates.com
 For Bennett Associates' electronic information issue disclaimer -
 www.bennettsassociates.com/informationanddisclaimer/

Project
Site T2 KXC
 Kings Cross Central Partnership Ltd.

Drawing Title
East Elevation

Project No. 1503

Drawing Number
 KXC-T2-001-A-1503-P20-302

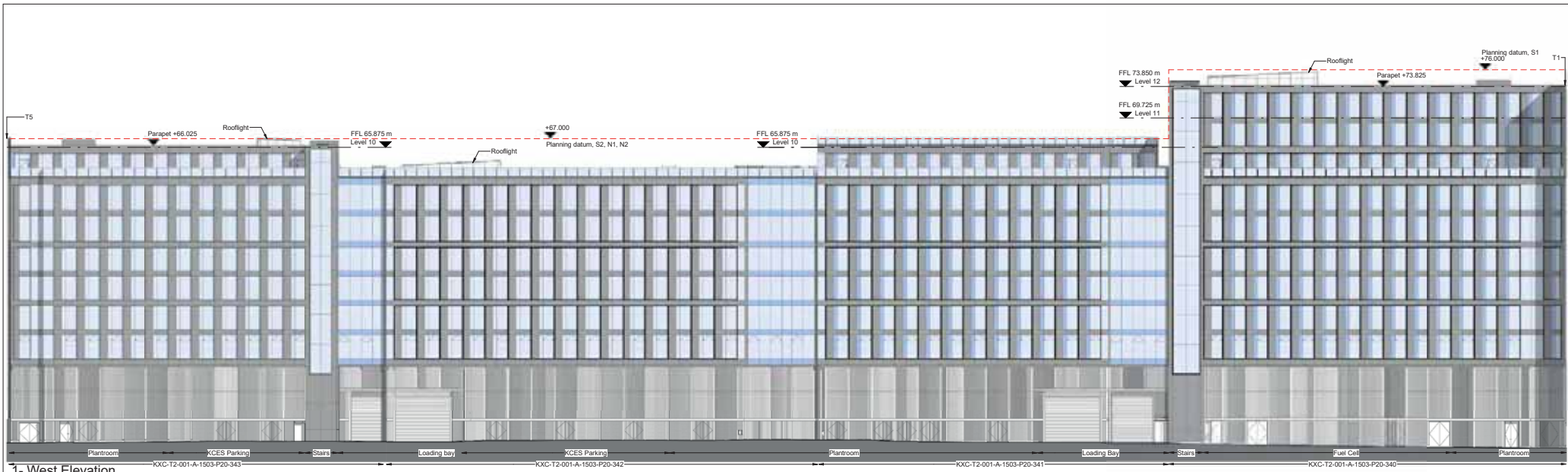
Revision
 02

Scale @ A3
 1 : 500

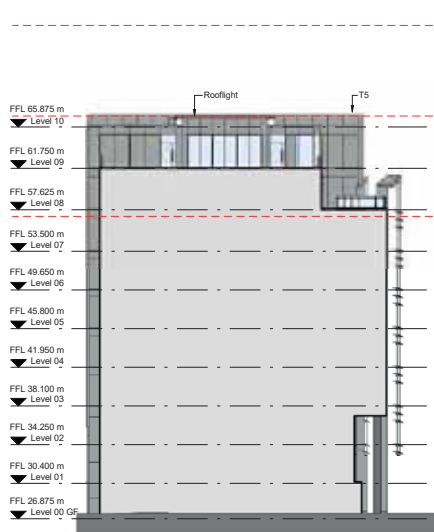
Scale @ A1
 1 : 250

Revision Date
 18/12/19

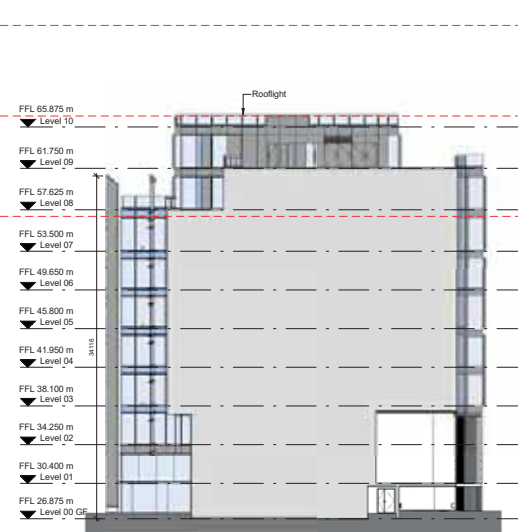
YMMDD



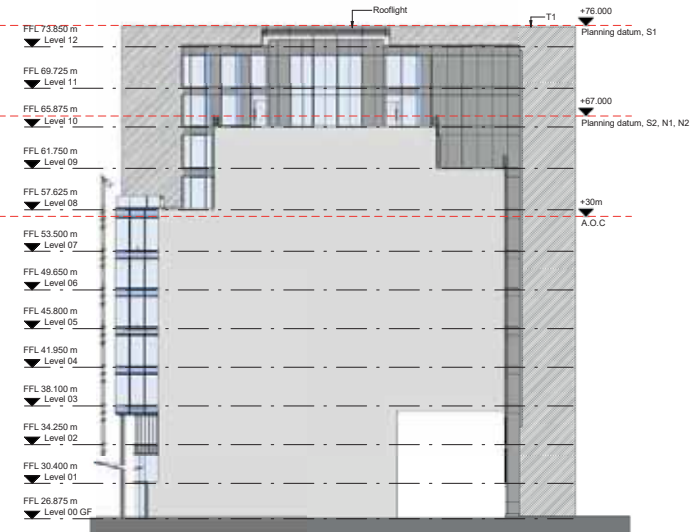
1- West Elevation



2- South Elevation N2

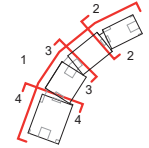
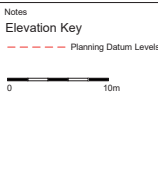


3- North Elevation Block S2



4- North Elevation Block S1

| Revisions | By | Chk | Revisions | By | Chk | Notes |
|-------------------------------|----|-----|-----------|----|-----|---------------------------------|
| 01 160415 Issued for Planning | SD | MB | | | | Elevation Key |
| 02 181219 Issued for Planning | BH | SL | | | | - - - - - Planning Datum Levels |



BENNETTS ASSOCIATES

1 Rawstorne Place, London EC1V 7NL
 T +44(0)207 5213300 • www.bennettsassociates.com
 E mail@bennettsassociates.com

Project
Site T2 KXC
 Kings Cross Central Partnership Ltd.

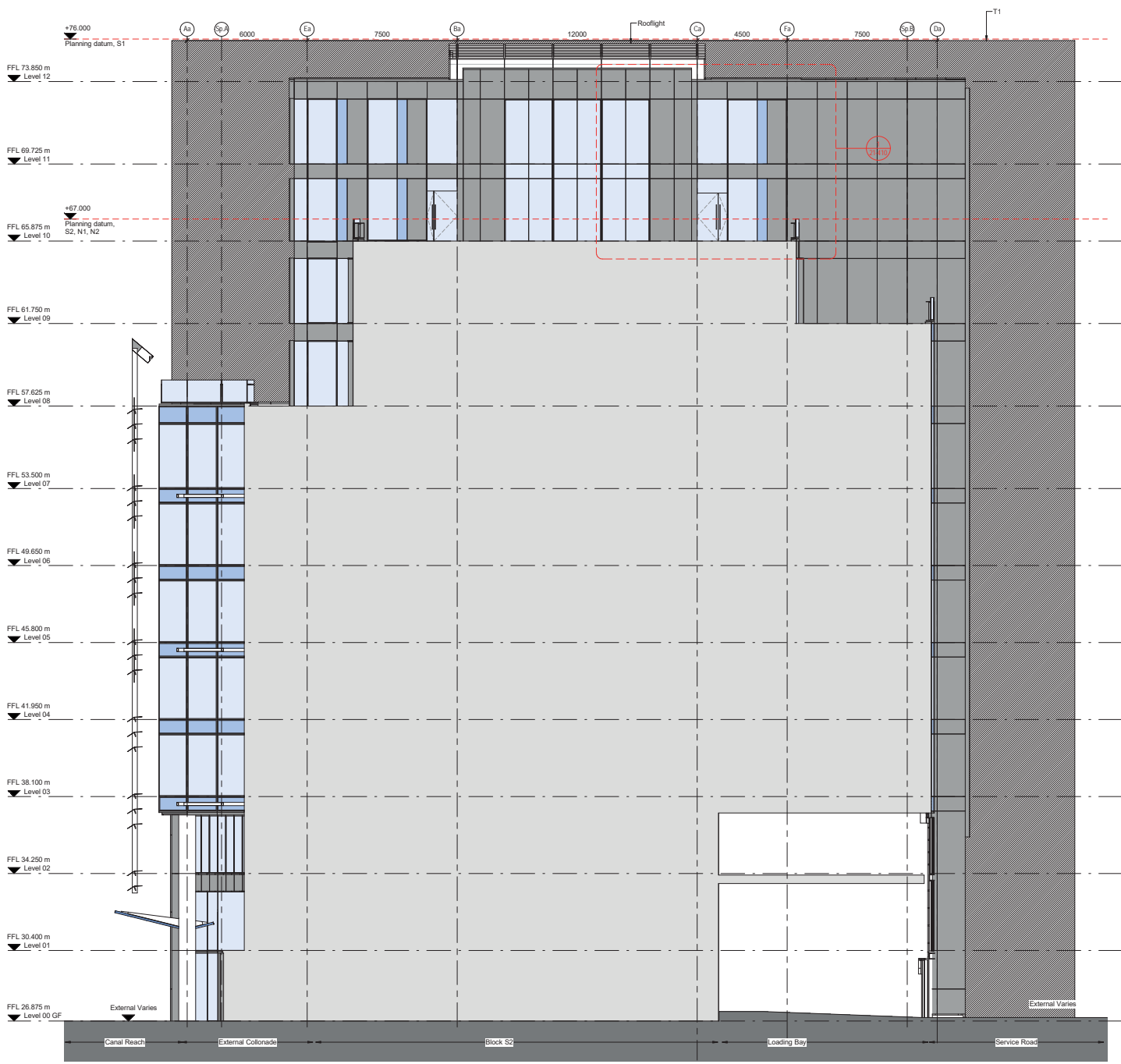
Drawing Title
West Elevation

Drawing Number
KXC-T2-001-A-1503-P20-304

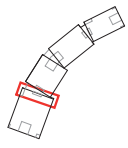
Scale @ A3 1:500 Scale @ A1 1:250

Project No. 1503
 Revision 02
 Revision Date 181219
 YY MM DD

| Revisions | By | Chk |
|-------------------------------|----|-----|
| 01 160415 Issued for Planning | SD | MB |
| 02 181219 Issued for Planning | BH | SL |



Notes



BENNETTS ASSOCIATES

1 Rawstorne Place, London EC1V 7NL
 T +44(0)20 75203300 • www.bennettsassociates.com
 E mail@bennettsassociates.com

Project Site T2 KXC Project No. 1503
 Kings Cross Central Partnership Ltd.

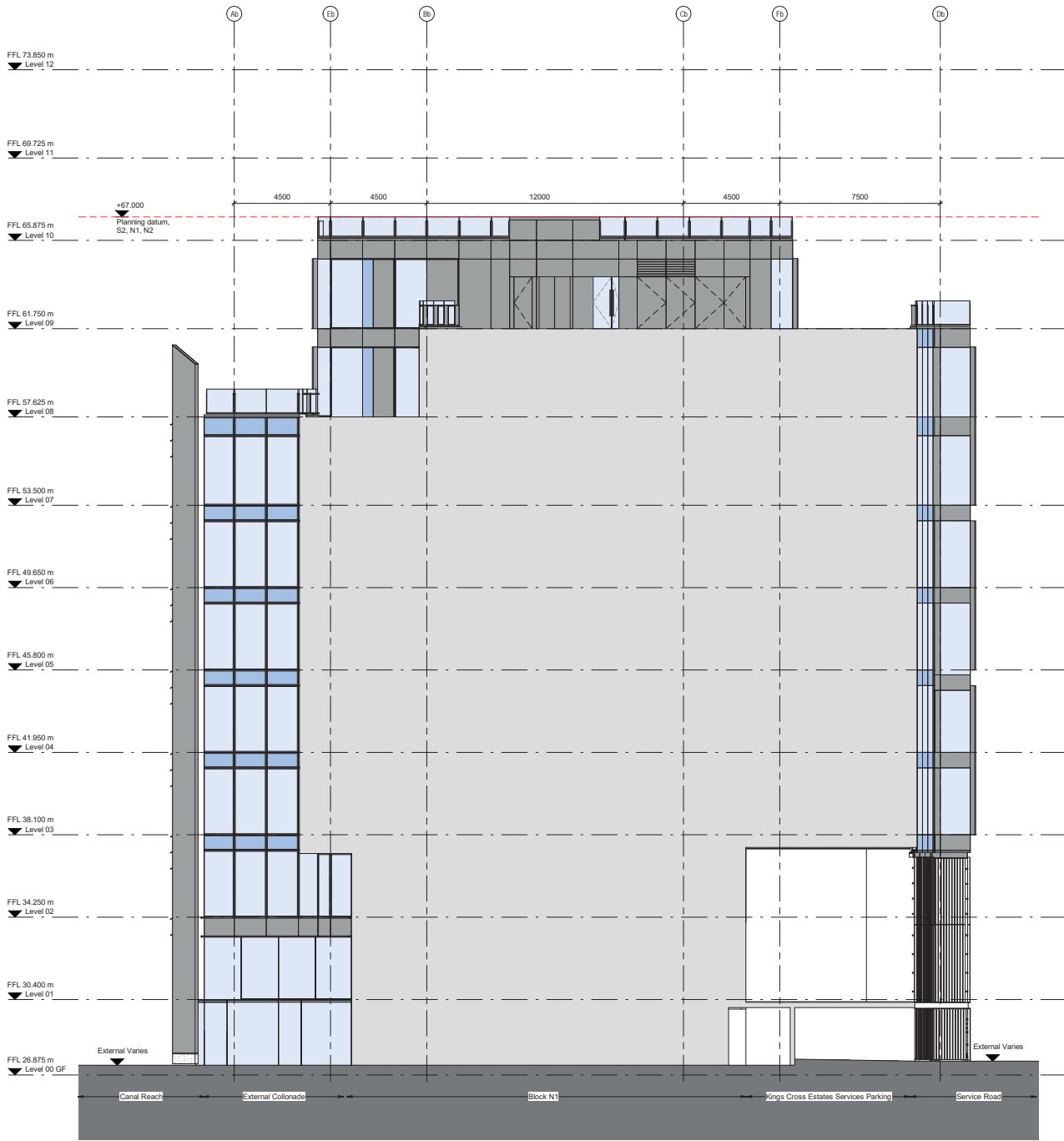
Drawing Title
 North Elevation - Block S1
 Block S1

Drawing Number
 KXC-TZ-001-A-1503-P20-310 Revision
 02

Scale @ A3 1 : 200 Scale @ A1 1 : 100 Revision Date
 181219

North Elevation Block S1

YMM/00

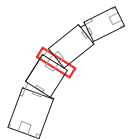


North Elevation Block S2

| Revisions | | By | Chk |
|-----------|--------|---------------------|----------|
| 01 | 160415 | Issued for Planning | SD |
| 02 | 181219 | Issued for Planning | MB SL |

Notes

Elevation Key
 --- Planning Datum Levels



BENNETTS ASSOCIATES

1 Rawstorne Place, London EC1V 7NL
 T +44(0)207 5203300 • www.bennettsassociates.com
 E mail@bennettsassociates.com

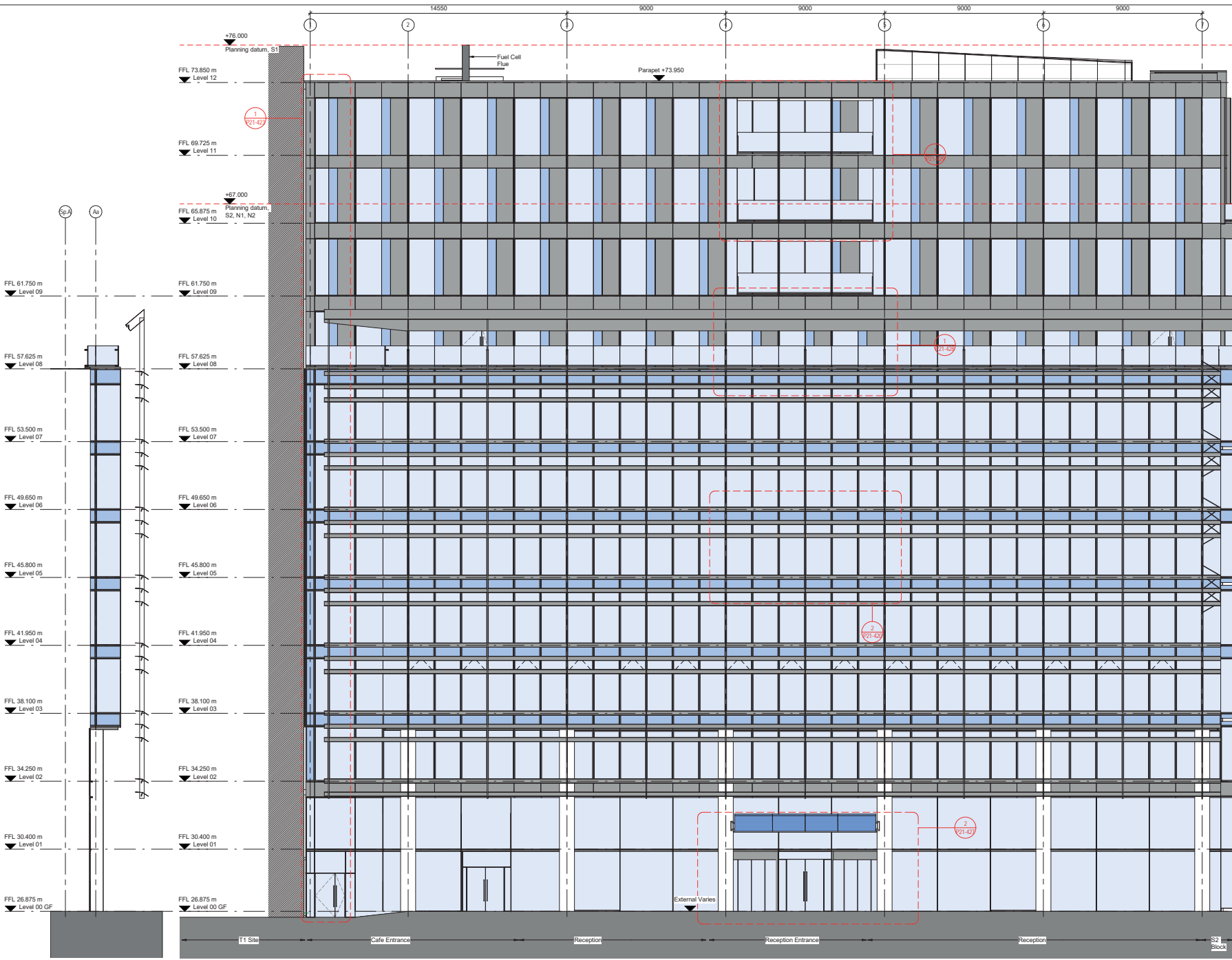
Project Site T2 KXC Project No. 1503
 Kings Cross Central Partnership Ltd.

Drawing Title
 North Elevation - Block S2
 Block S2

Drawing Number
 KXC-TZ-001-A-1503-P20-311 Revision
 02

Scale @ A3 1 : 200 Scale @ A1 1 : 100 Revision Date
 181219

YYMMDD



South Return Elev. S1

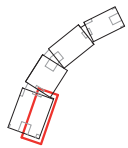
East Elevation S1

| Revisions | By | Chk |
|-------------------------------|----|-----|
| 01 160415 Issued for Planning | SD | MB |
| 02 181219 Issued for Planning | BH | SL |

Notes

Elevation Key

--- Planning Datum Levels



BENNETTS ASSOCIATES

1 Rawstone Place, London EC1V 7NL
 T +44(0)207 5203300 • www.bennettsassociates.com
 E mail@bennettsassociates.com

Project KXC-1503
 Project No. 1503
 Site T2 KXC
 Kings Cross Central Partnership Ltd.

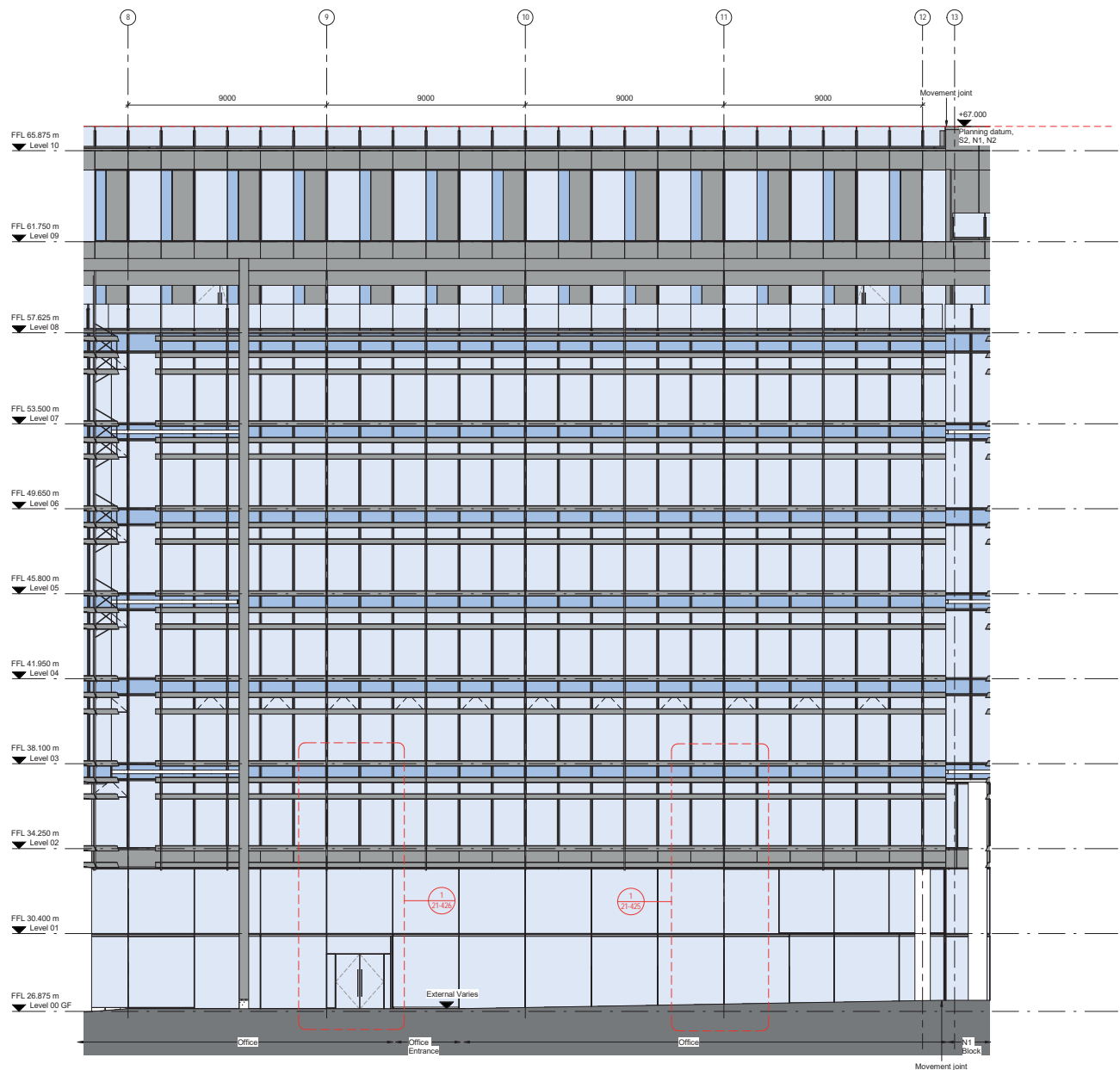
Drawing Title
 East Elevation - Block S1
 Block S1

Drawing Number
 KXC-T2-001-A-1503-P20-320
 Revision
 02

Scale @ A3 1 : 200
 Scale @ A1 1 : 100
 Revision Date
 181219

YMM/00

| Revisions | By | Chk |
|-------------------------------|----|-----|
| 01 160415 Issued for Planning | SD | MB |
| 02 181219 Issued for Planning | BH | SL |

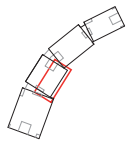


East Elevation S2

Notes

Elevation Key

--- Planning Datum Levels



BENNETTS ASSOCIATES

1 Rawstone Place, London EC1V 7NL
T +44(0)207 5203300 • www.bennettsassociates.com
E mail@bennettsassociates.com
For Bennetts Associates' electronic information usage disclaimer -
www.bennettsassociates.com/information/disclaimer/

Project No. 1503
Site T2 KXC
Kings Cross Central Partnership Ltd.

Drawing Title

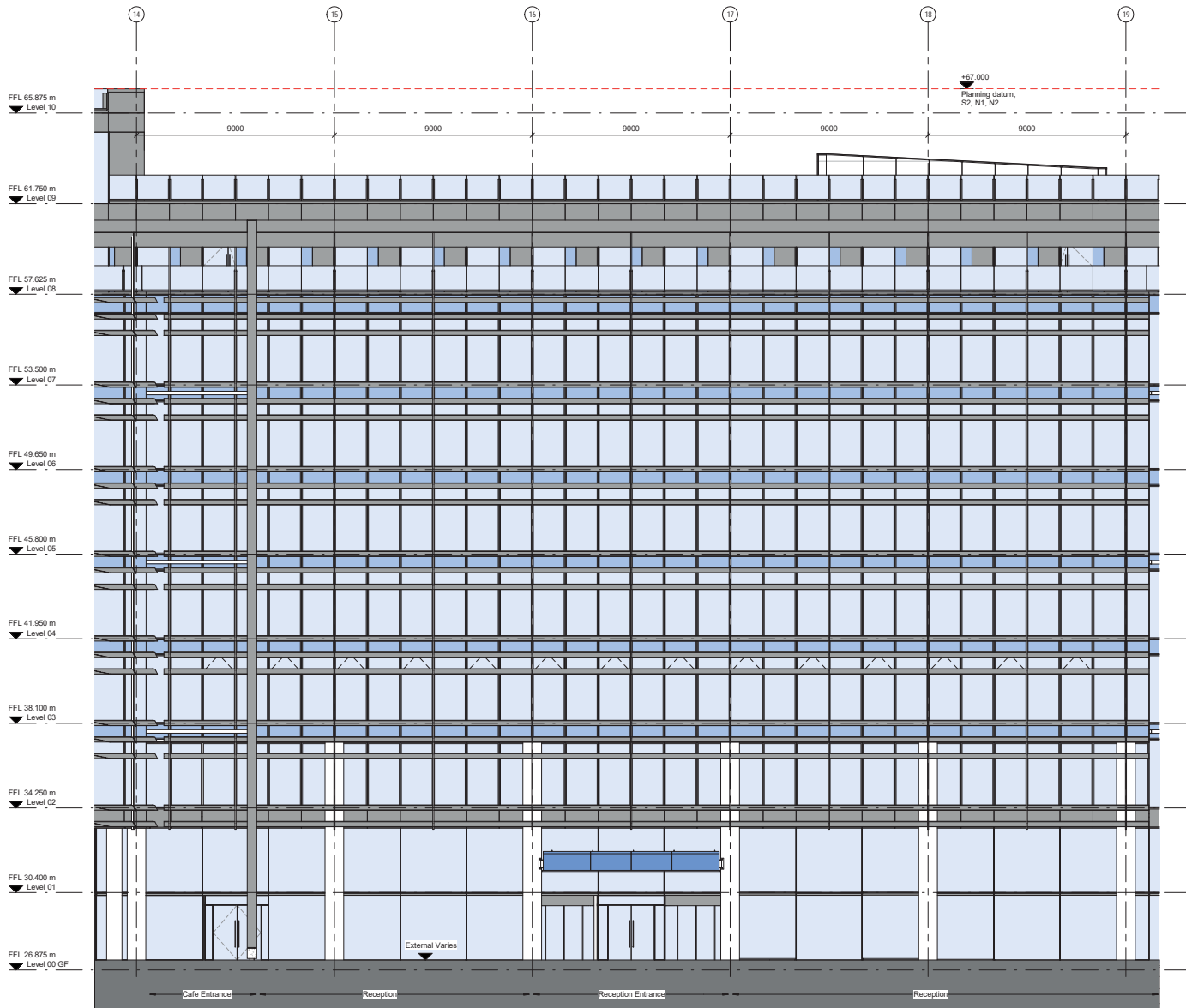
East Elevation - Block S2
Block S2

Drawing Number: KXC-TZ-001-A-1503-P20-321
Revision: 02

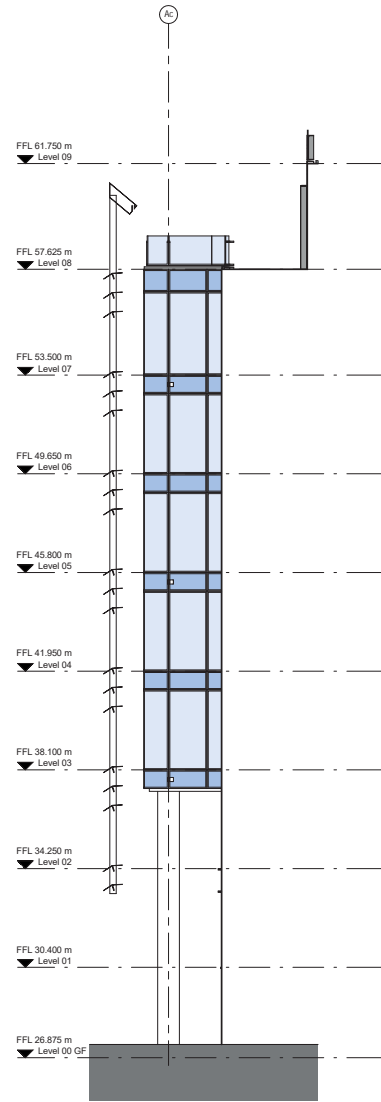
Scale @ A3: 1 : 200
Scale @ A1: 1 : 100
Revision Date: 181219

YMM/00

| Revisions | By | Chk |
|-------------------------------|----|-----|
| 01 160415 Issued for Planning | SD | MB |
| 02 181219 Issued for Planning | BH | SL |



East Elevation N1



North Return Elev. N1

Notes

Elevation Key

--- Planning Datum Levels

0 4m

BENNETTS ASSOCIATES

1 Rawstone Place, London EC1V 7NL
 T +44(0)207 5203300 • www.bennettsassociates.com
 E mail@bennettsassociates.com
For Bennett's Associates' electronic information issue disclaimer - www.bennettsassociates.com/information/disclaimer/

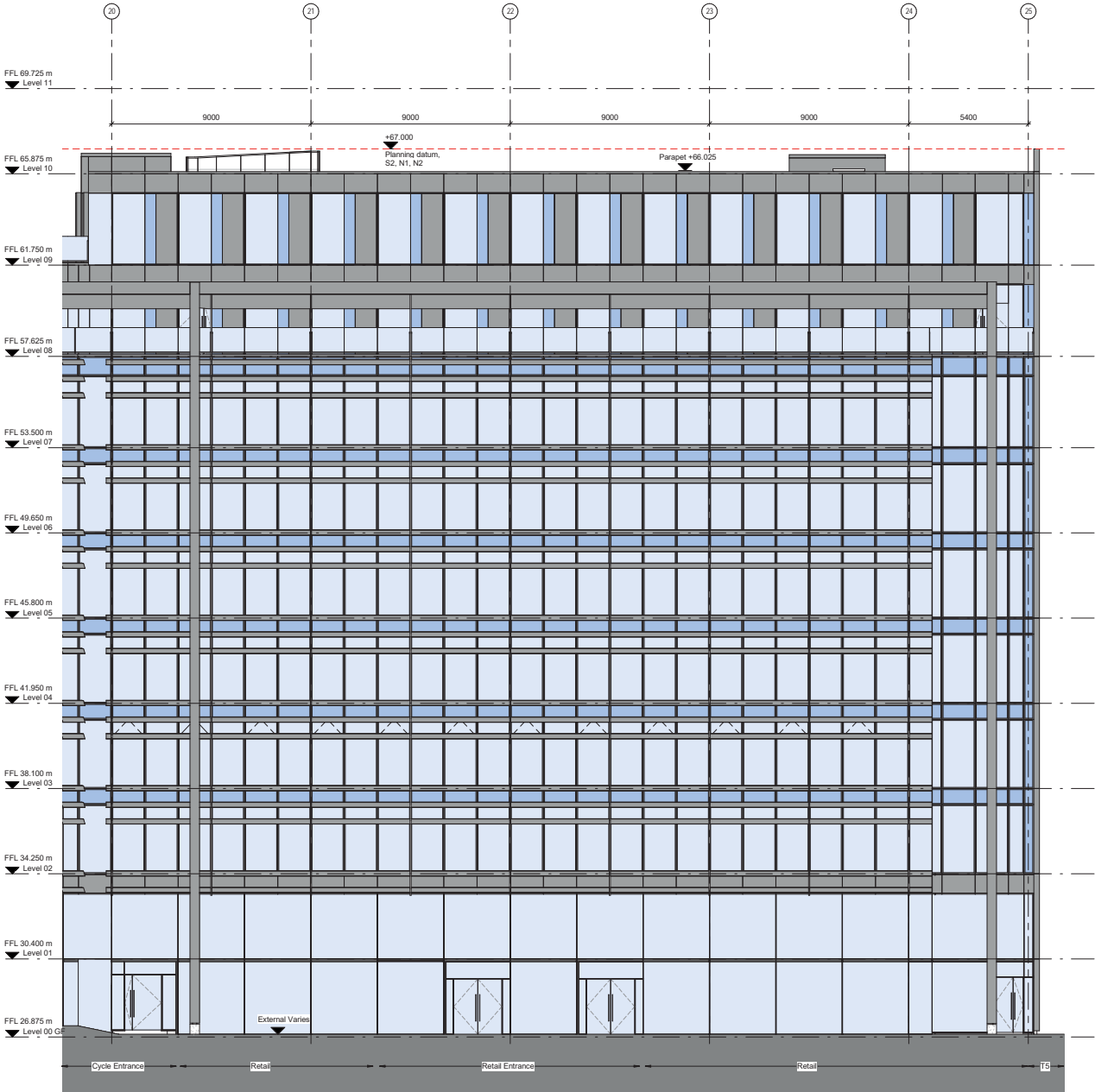
Project Site T2 KXC Project No. 1503
 Kings Cross Central Partnership Ltd.

Drawing Title
 East Elevation - Block N1
 Block N1

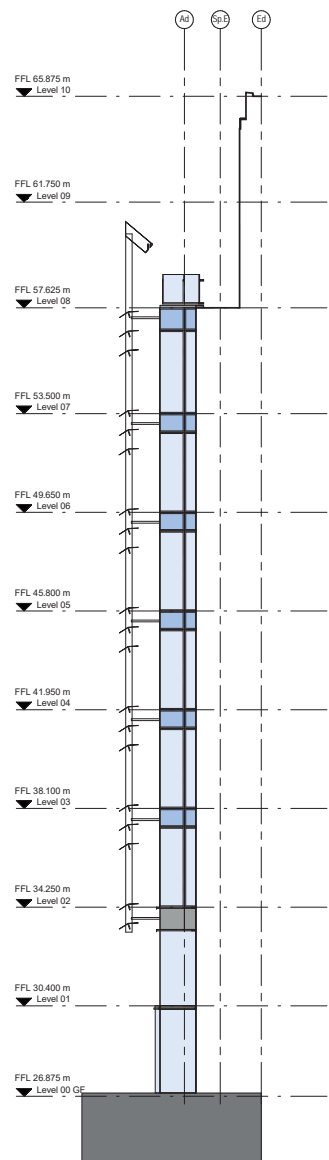
Drawing Number
 KXC-T2-001-A-1503-P20-322

Scale @ A3 1 : 200
 Scale @ A1 1 : 100
 Revision 02
 Revision Date 181219

YMM/00



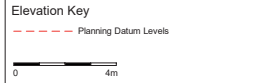
East Elevation N2



1503-20-323 - North Return Elev. N2

| Revisions | By | Chk |
|-------------------------------|----|-----|
| 01 160415 Issued for Planning | SD | MB |
| 02 181219 Issued for Planning | BH | SL |

Notes



BENNETTS ASSOCIATES

1 Rawstorne Place, London EC1V 7NL
 T +44(0)207 5203300 • www.bennettsassociates.com
 E mail@bennettsassociates.com
 For Bennetts Associates' electronic information issue disclaimer -
 www.bennettsassociates.com/information/disclaimer/

Project 1503
Site T2 KXC
 Kings Cross Central Partnership Ltd.

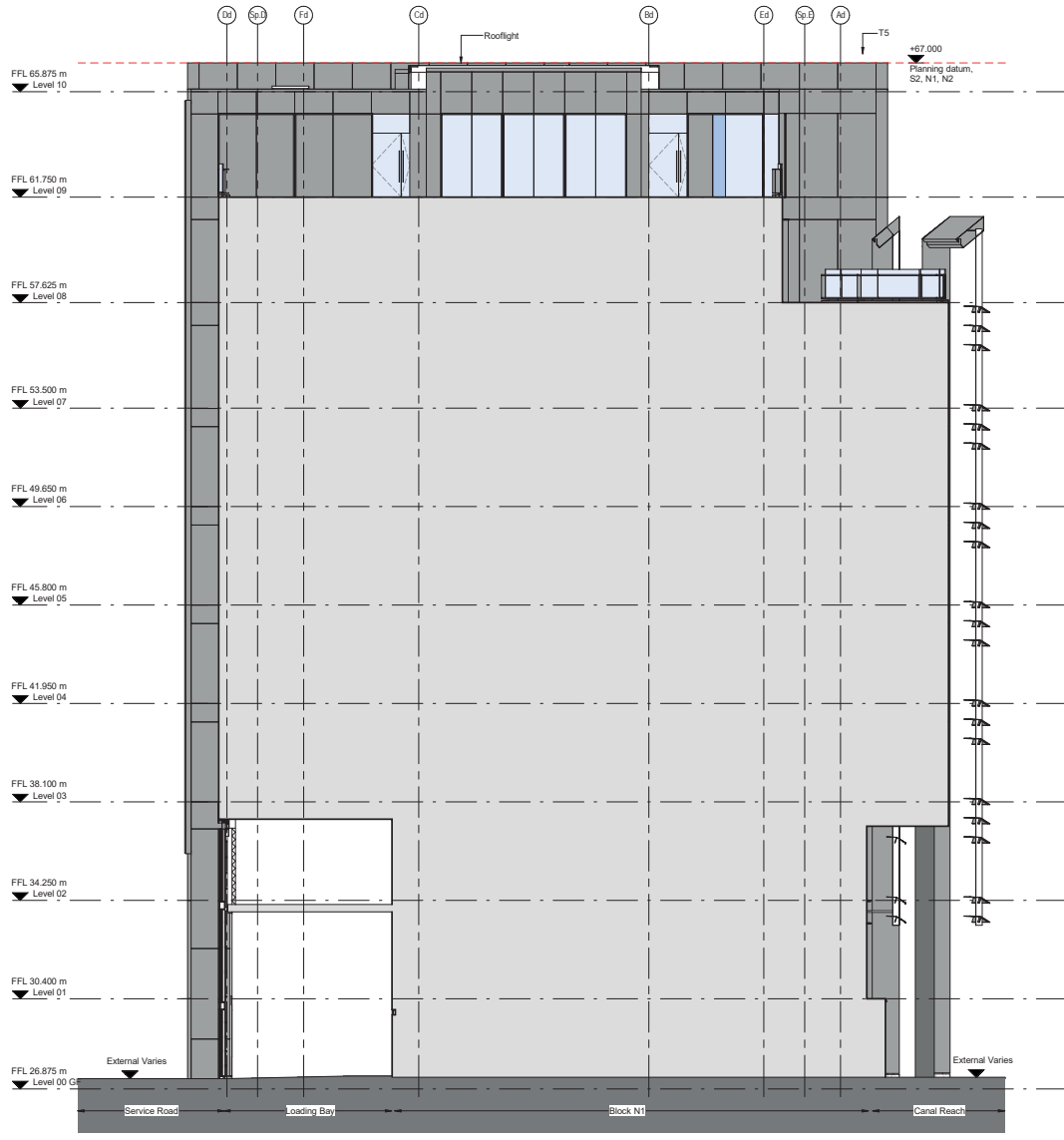
Drawing Title
 East Elevation - Block N2
 Block N2

Drawing Number
 KXC-T2-001-A-1503-P20-323

Revision 02
 Scale @ A3 1 : 200
 Scale @ A1 1 : 100
 Revision Date 181219

YYMMDD

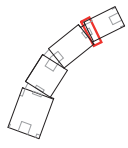
| Revisions | By | Chk |
|-------------------------------|----|-----|
| 01 160415 Issued for Planning | SD | MB |
| 02 181219 Issued for Planning | BH | SL |



South Elevation N2

Notes

Elevation Key
 - - - - - Planning Datum Levels



BENNETTS ASSOCIATES

1 Rawstone Place, London EC1V 7NL
 T +44(0)207 5203300 • www.bennettsassociates.com
 E mail@bennettsassociates.com
 For Bennetts Associates' electronic information usage disclaimer -
 www.bennettsassociates.com/informationanddisclaimer/

Project Site T2 KXC
 Kings Cross Central Partnership Ltd.

Drawing Title
 South Elevation - Block N2
 Block N2

Drawing Number: KXC-TZ-001-A-1503-P20-330
 Revision: 02

Scale @ A3: 1 : 200
 Scale @ A1: 1 : 100
 Revision Date: 181219

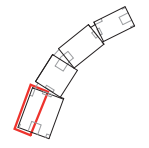
YYMMDD

| Revisions | By | Chk |
|-------------------------------|----|-----|
| 01 160415 Issued for Planning | SD | MB |
| 02 181219 Issued for Planning | BH | SL |

Notes

Elevation Key

--- Planning Datum Levels



BENNETTS ASSOCIATES

1 Rawstone Place, London EC1V 7NL
 T +44(0)207 5203300 • www.bennettsassociates.com
 E mail@bennettsassociates.com

For Bennett's Associates' electronic information issue disclaimer - www.bennettsassociates.com/informationaldisclaimer/

Project Kings Cross Central Partnership Ltd. Project No. 1503
 Site T2 KXC

Drawing Title
 West Elevation - Block S1

Drawing Number KXC-T2-001-A-1503-P20-340 Revision 02

Scale @ A3 1 : 200 Scale @ A1 1 : 100 Revision Date 181219

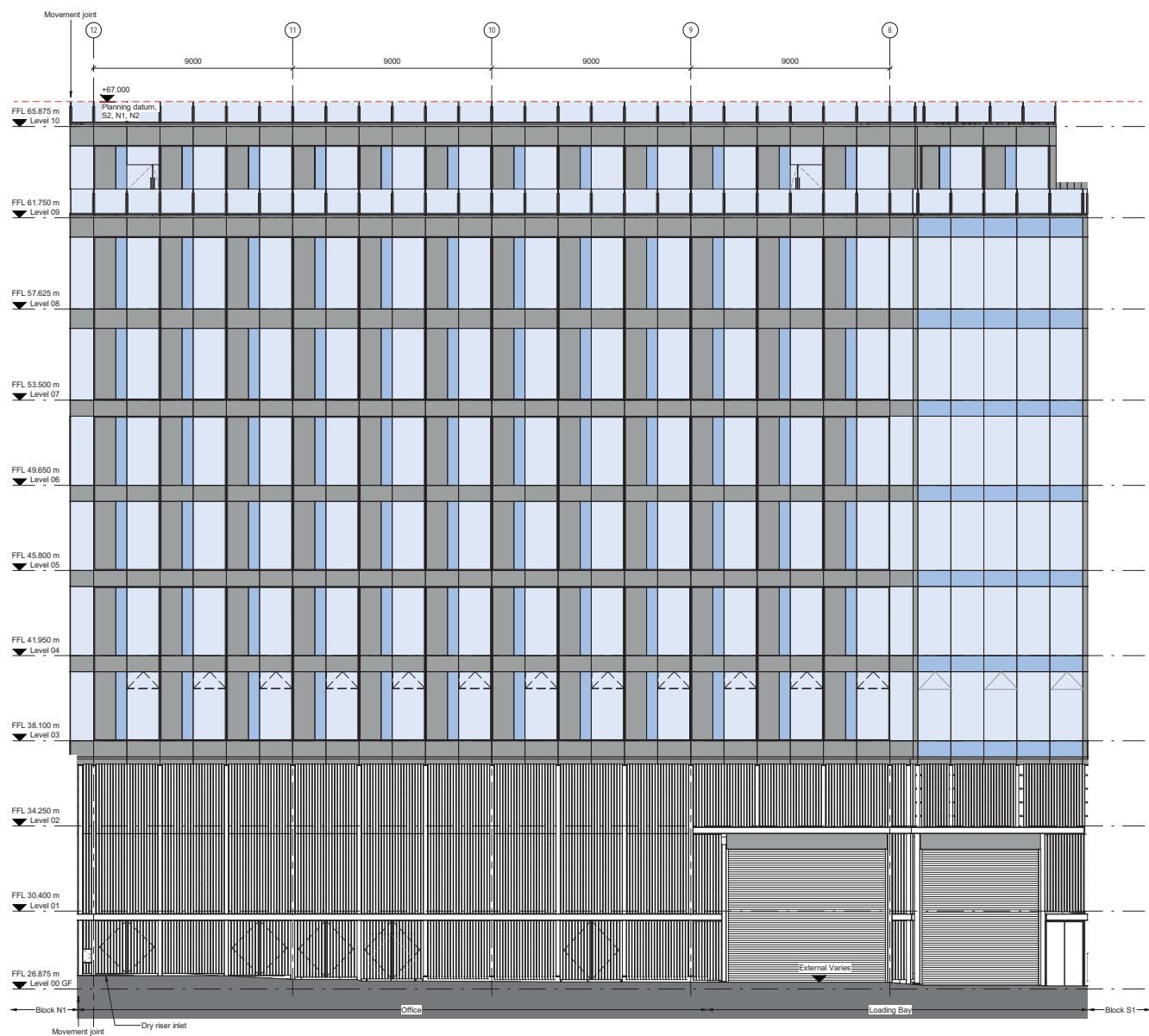
YMM/00



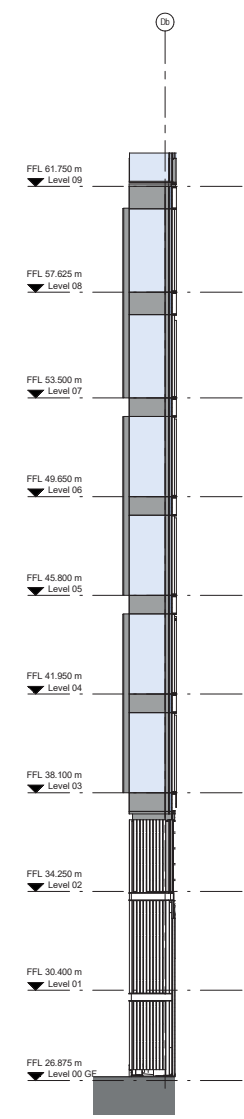
West Elevation S1

South Return Elev. S1

| Revisions | | By | Chk |
|-----------|--------|---------------------|----------|
| 01 | 160415 | Issued for Planning | SD |
| 02 | 181219 | Issued for Planning | MB BH |



West Elevation S2

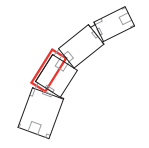


South Return Elev. S2

Notes

Elevation Key

--- Planning Datum Levels



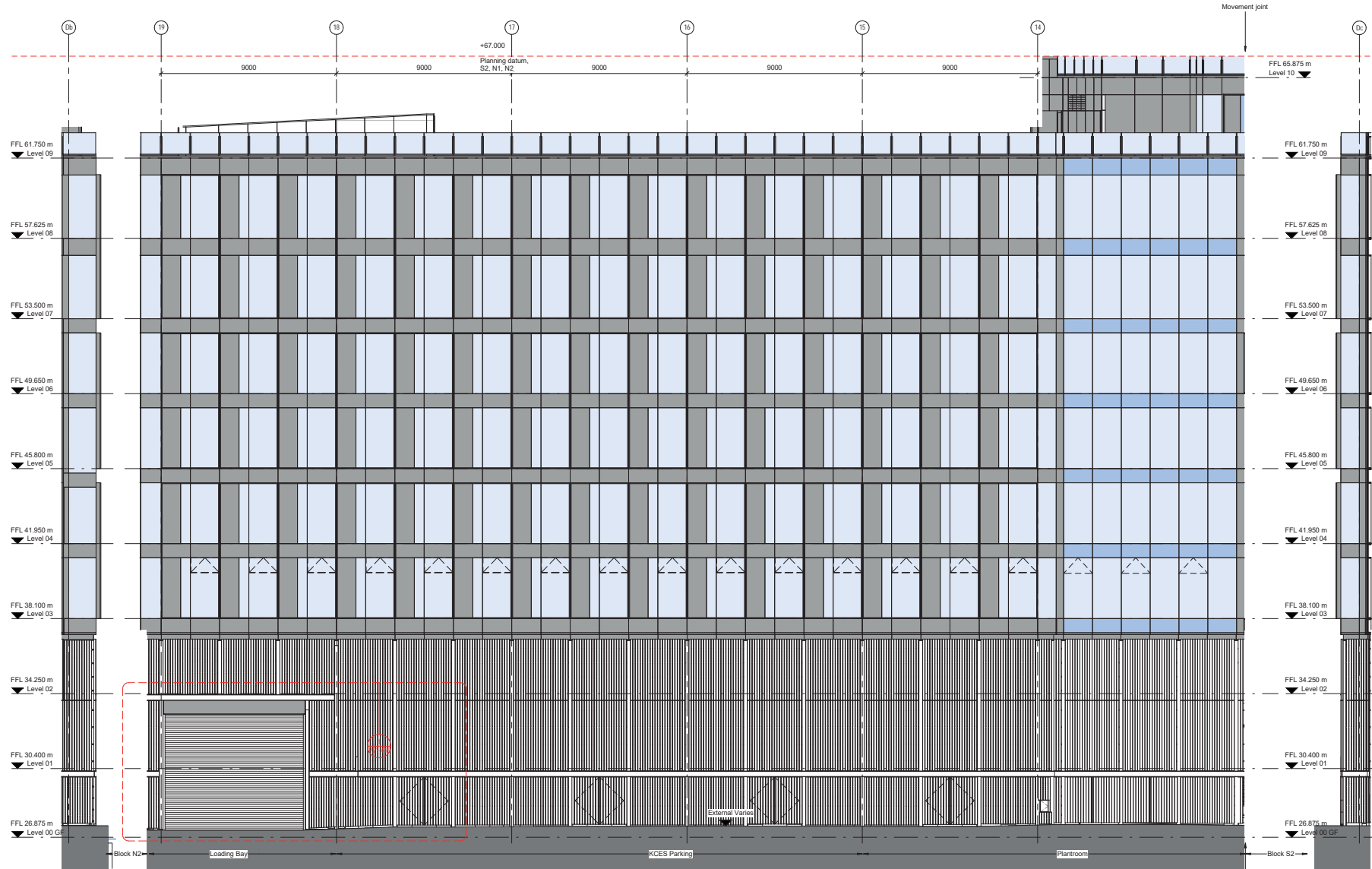
BENNETTS ASSOCIATES
 1 Rawstone Place, London EC1V 7NL
 T +44(0)207 5203300 • www.bennettsassociates.com
 E mail@bennettsassociates.com
For Bennetts Associates' electronic information usage disclaimer - www.bennettsassociates.com/information/disclaimer/

Project **Site T2 KXC** Project No. 1503
 Kings Cross Central Partnership Ltd.

Drawing Title
 West Elevation - Block S2
 Block S2

| Drawing Number | Revision |
|---------------------------|------------|
| KXC-T2-001-A-1503-P20-341 | 02 |
| Scale @ A3 | Scale @ A1 |
| | 1 : 100 |
| Revision Date | 181219 |
| YMMDD | |

| Revisions | By | Chk |
|-------------------------------|----|-----|
| 01 160415 Issued for Planning | SD | MB |
| 02 181219 Issued for Planning | BH | SL |

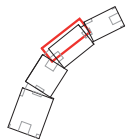


Notes

Elevation Key

--- Planning Datum Levels

0 4m



BENNETTS ASSOCIATES

1 Rawstorne Place, London EC1V 7NL
 T +44(0)207 5203300 • www.bennettsassociates.com
 E mail@bennettsassociates.com
 For Bennetts Associates' electronic information usage disclaimer -
 www.bennettsassociates.com/informationdisclaimer/

Project Site T2 KXC Project No. 1503
 Kings Cross Central Partnership Ltd.

Drawing Title
 West Elevation - Block N1
 Block N1

Drawing Number
 KXC-T2-001-A-1503-P20-342 Revision
 02

Scale @ A3 1 : 200 Scale @ A1 1 : 100 Revision Date
 181219

YMM00

North Return Elev. S2 West Elevation N1

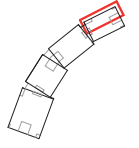
South Return Elev. N2

| Revisions | By | Chk |
|-------------------------------|----|-----|
| 01 160415 Issued for Planning | SD | MB |
| 02 181219 Issued for Planning | BH | SL |

Notes

Elevation Key

--- Planning Datum Levels



BENNETTS ASSOCIATES

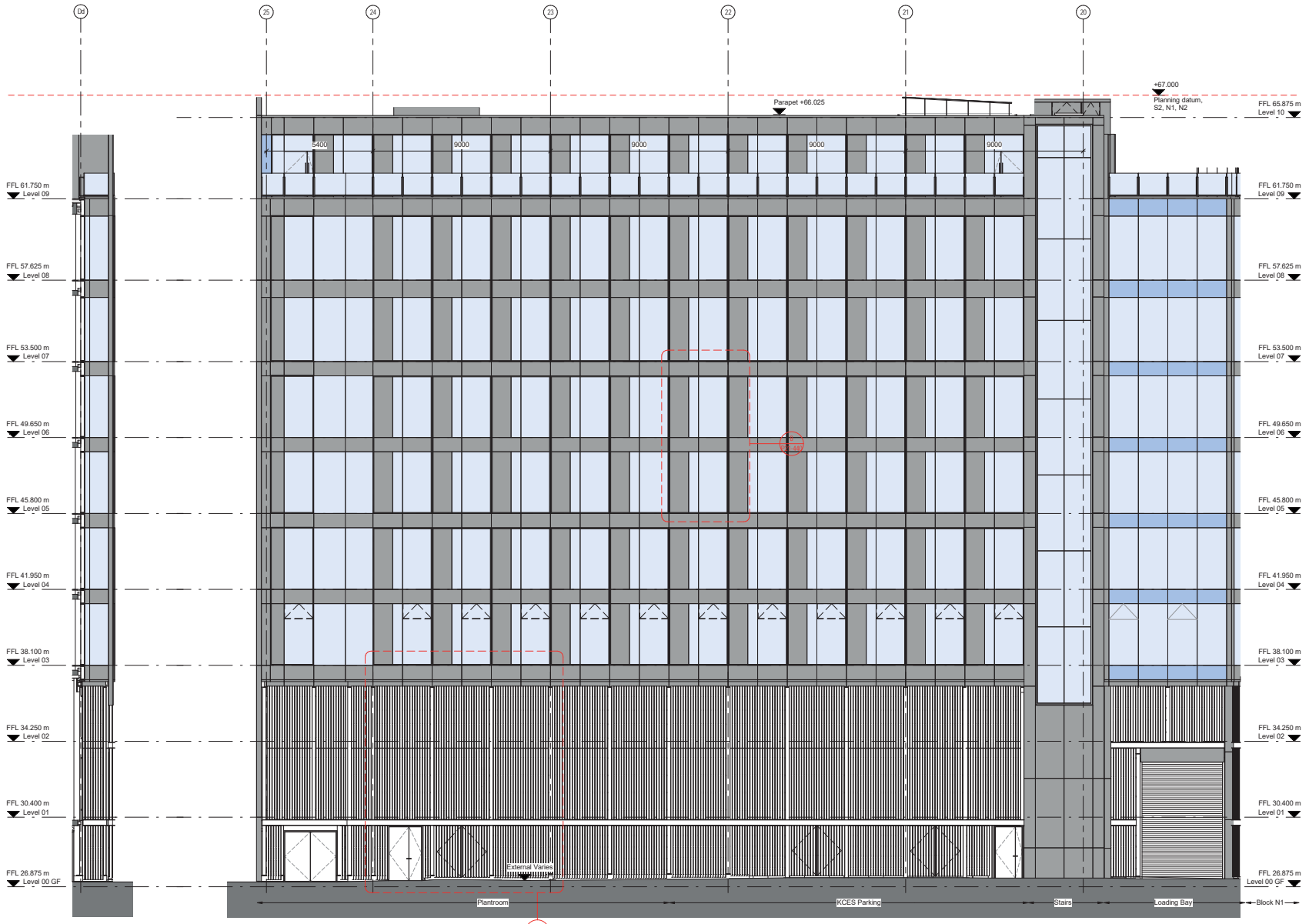
1 Rawstone Place, London EC1V 7NL
 T +44(0)207 5203300 • www.bennettsassociates.com
 E mail@bennettsassociates.com
 For Bennett's Associates' electronic information usage disclaimer -
 www.bennettsassociates.com/informationdisclaimer/

Project KINGS CROSS CENTRAL PARTNERSHIP LTD. Project No. 1503
 Site T2 KXC

Drawing Title
 West Elevation - Block N2
 Block N2

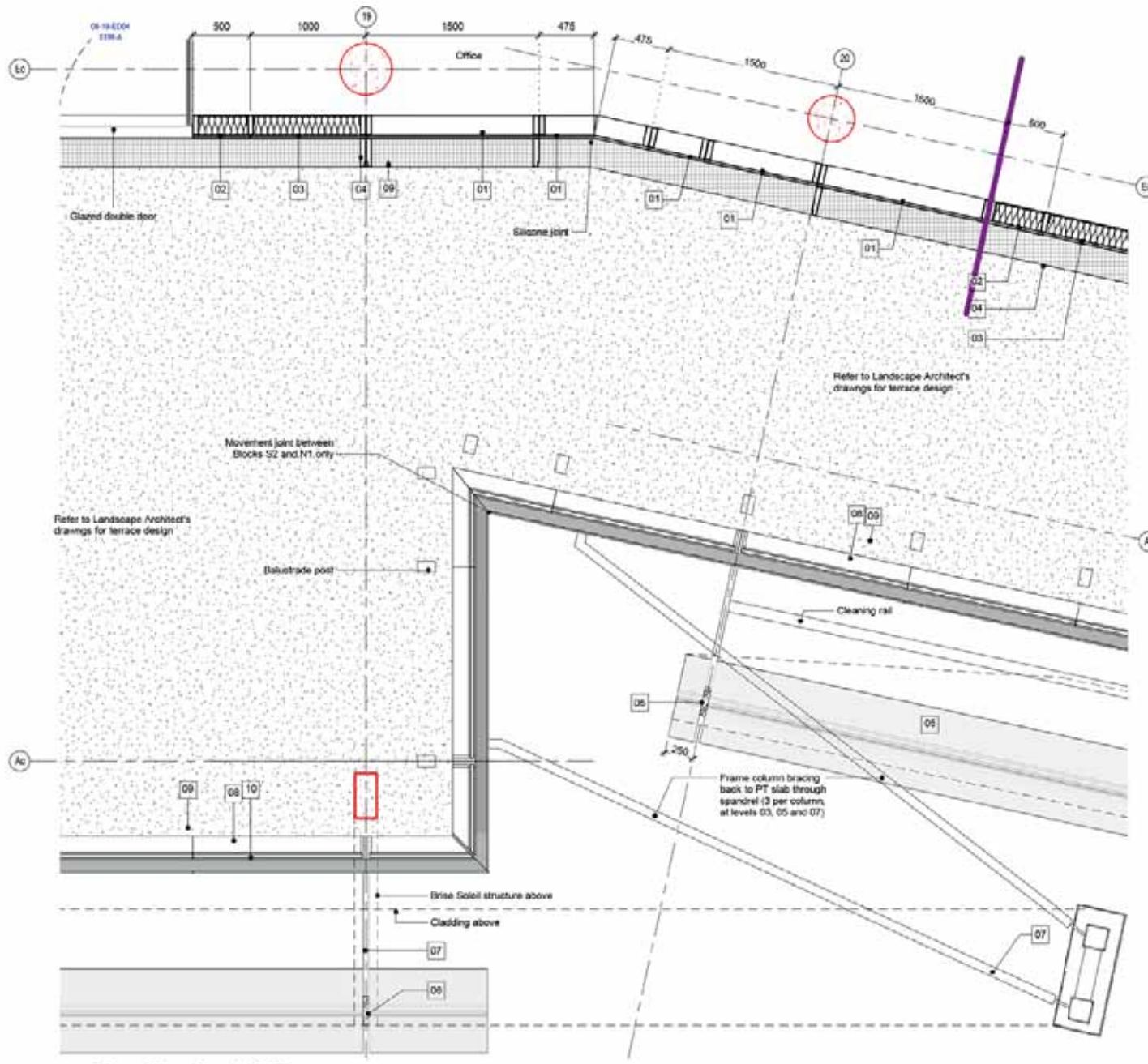
Drawing Number KXC-T2-001-A-1503-P20-343 Revision 02

Scale @ A3 1 : 200 Scale @ A1 1 : 100 Revision Date 181219
 YMM/00



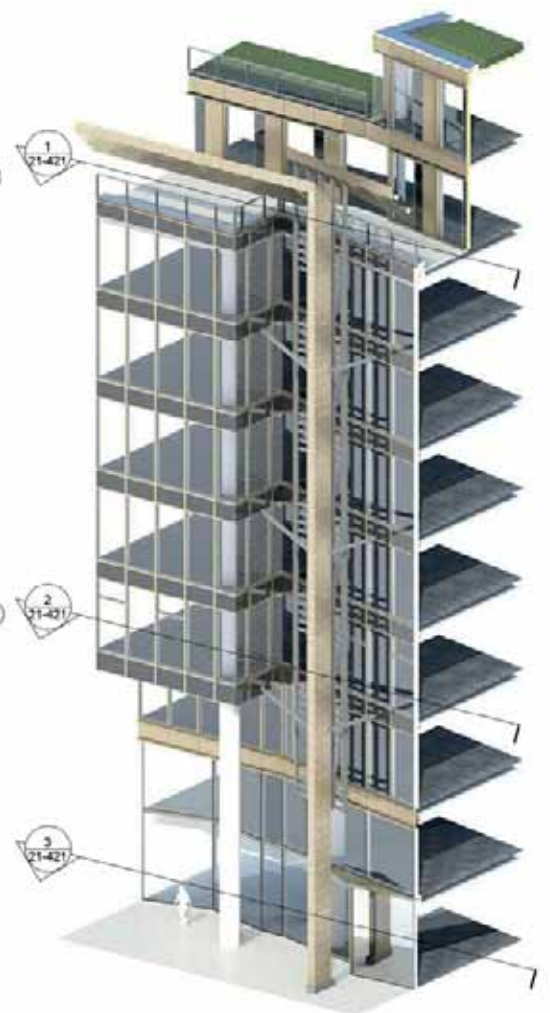
North Return Elev. N2

West Elevation N2



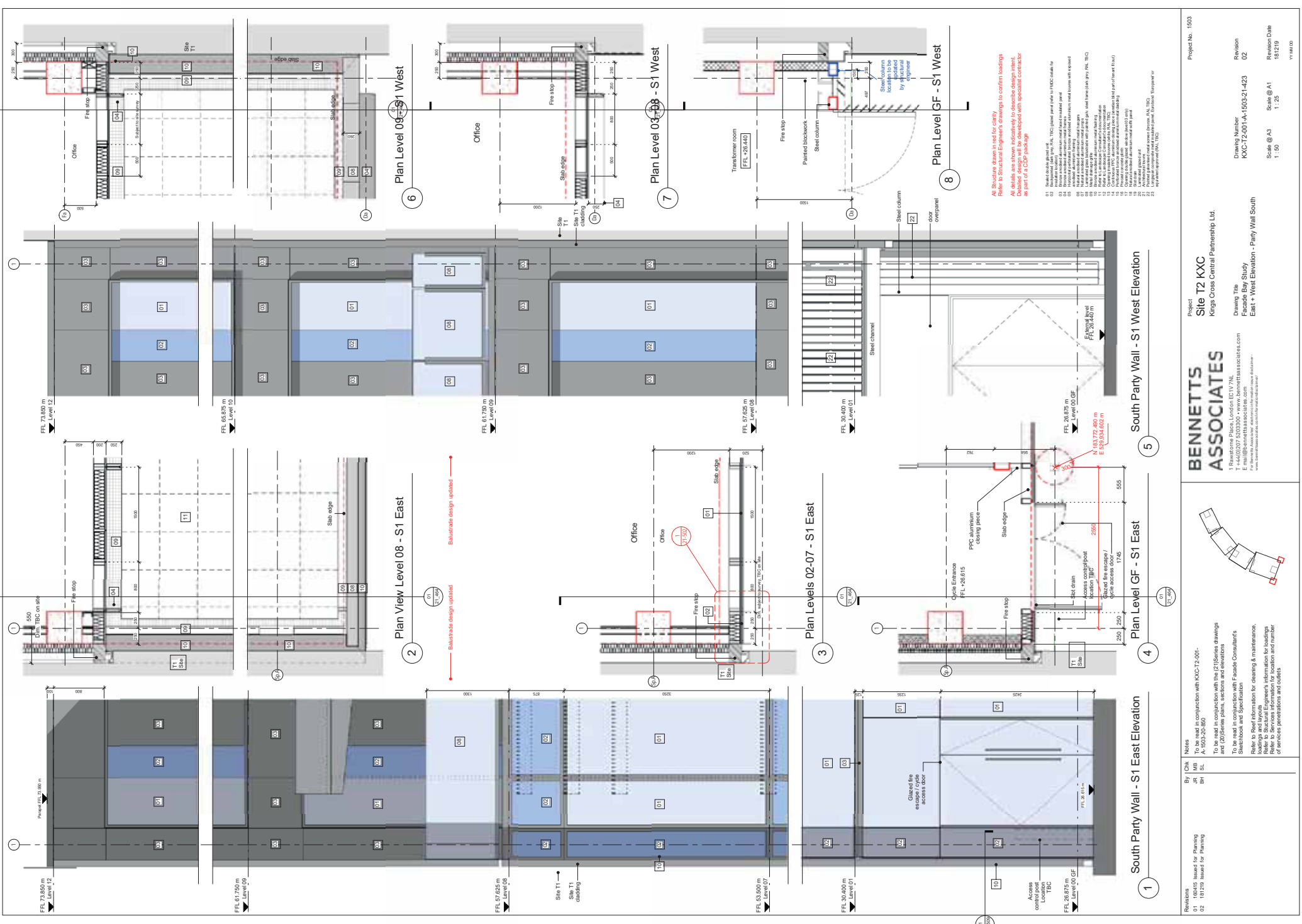
Plan View Level 08 Terrace

1



Axo View N1 Return (without louvres for visual purposes)

4

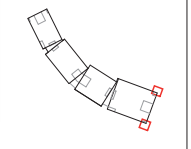


All Structural items to be checked.
Refer to Structural Engineers drawings to confirm loadings.
All details are shown indicative to describe design intent.
Detailed design will be developed with specialist contractor as part of a CIP package.

01 Steel plate on ground floor, 100mm thick plate on RMC details for
02 Fire stop details
03 Fire stop details
04 Fire stop details
05 Fire stop details
06 Fire stop details
07 Fire stop details
08 Fire stop details
09 Fire stop details
10 Fire stop details
11 Fire stop details
12 Fire stop details
13 Fire stop details
14 Fire stop details
15 Fire stop details
16 Fire stop details
17 Fire stop details
18 Fire stop details
19 Fire stop details
20 Fire stop details
21 Fire stop details
22 Fire stop details

Project No. 1503
Project
Site T2 KXC
Kings Cross Central Partnership Ltd.
Drawing Title
East + West Elevation - Party Wall South
Revision Number
KXC-T2-08-14-1503-21-423
Scale @ A1
1:50
Revision Date
18/12/19
BY: MJD

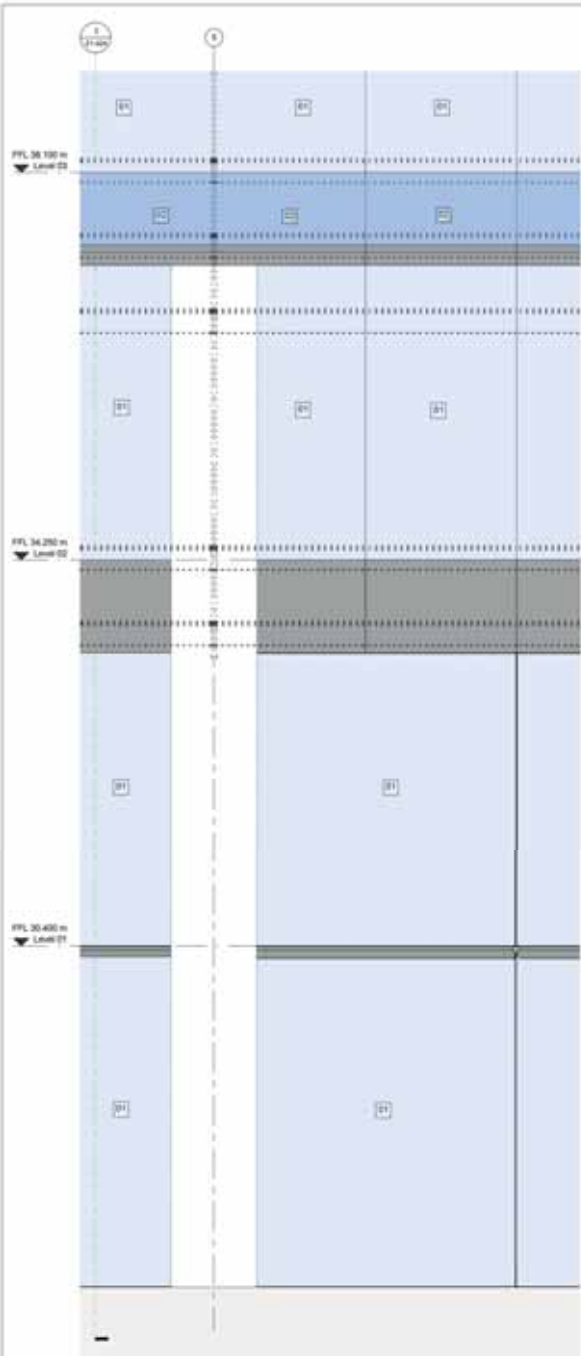
BENNETTS ASSOCIATES
1 Ravatome Place, London EC1V 7NL
T +44(0)207 5033030 www.bennettsassociates.com
For more details visit www.bennettsassociates.com



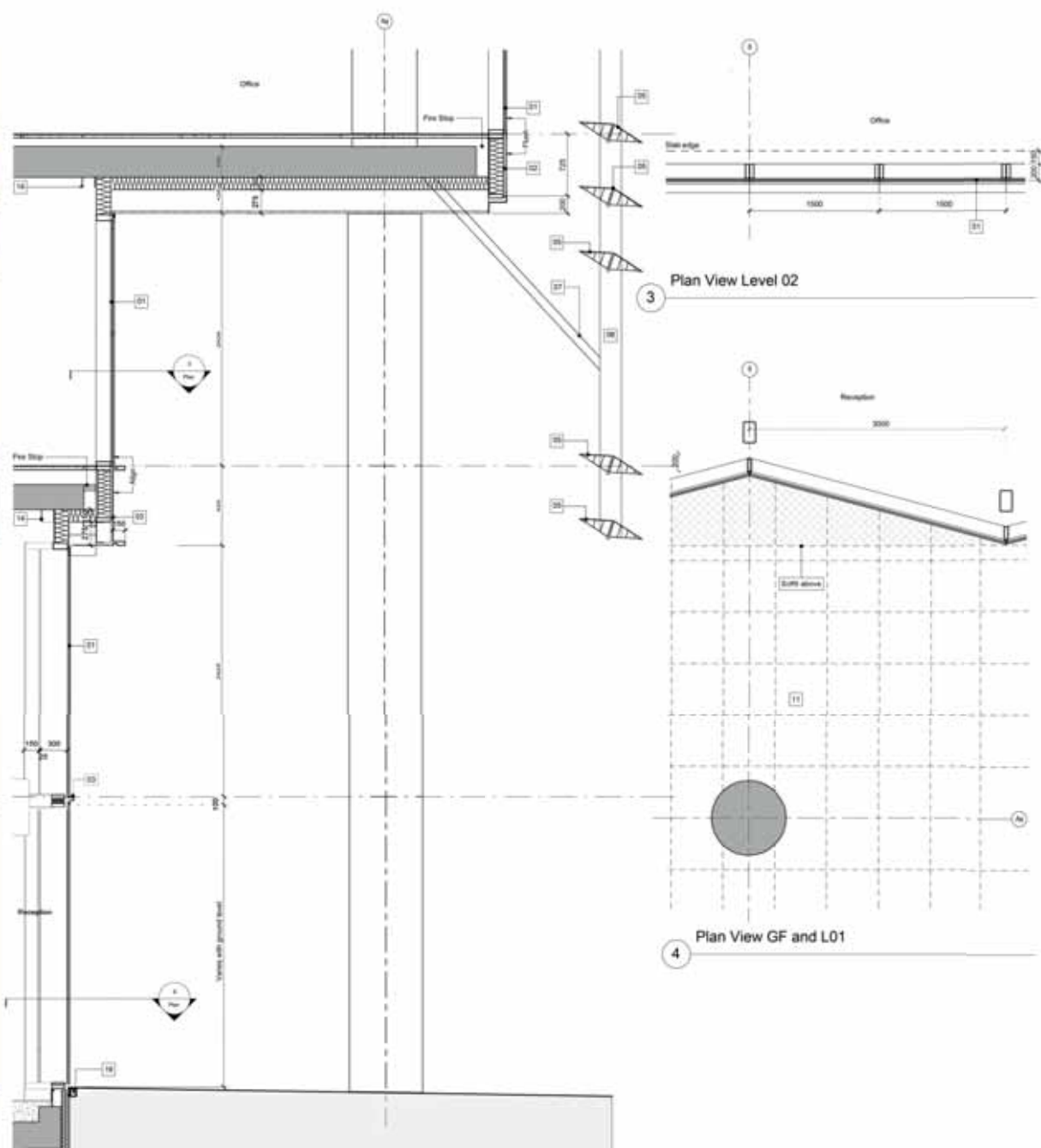
Notes
To be read in conjunction with KXC-T2-001-
An RIBA CIP Package
and (20) Shop plans, sections and elevations
Sketchbook and Specification
Refer to Brief information for cleaning & maintenance
loadings and layout
Refer to Services information for loading
Refer to Services information for location and number
of services penetrations and outlets

By: CHK
IS: IS
SR: SR

Revisions
Issued for Planning
02
18/12/19
Issued for Planning



Elevation View



Plan View Level 02

Plan View GF and L01

| Revision | By | CHK |
|-------------|---------------------|-------------|
| 01 19/11/19 | Issued for Planning | 02 19/11/19 |
| 02 19/11/19 | Issued for Planning | 01 19/11/19 |

- Notes**
1. Refer to the general notes.
 2. All dimensions are in millimeters unless otherwise stated.
 3. All dimensions are in millimeters unless otherwise stated.
 4. All dimensions are in millimeters unless otherwise stated.
 5. All dimensions are in millimeters unless otherwise stated.
 6. All dimensions are in millimeters unless otherwise stated.
 7. All dimensions are in millimeters unless otherwise stated.
 8. All dimensions are in millimeters unless otherwise stated.
 9. All dimensions are in millimeters unless otherwise stated.
 10. All dimensions are in millimeters unless otherwise stated.
 11. All dimensions are in millimeters unless otherwise stated.
 12. All dimensions are in millimeters unless otherwise stated.
 13. All dimensions are in millimeters unless otherwise stated.
 14. All dimensions are in millimeters unless otherwise stated.
 15. All dimensions are in millimeters unless otherwise stated.
 16. All dimensions are in millimeters unless otherwise stated.
 17. All dimensions are in millimeters unless otherwise stated.
 18. All dimensions are in millimeters unless otherwise stated.
 19. All dimensions are in millimeters unless otherwise stated.
 20. All dimensions are in millimeters unless otherwise stated.



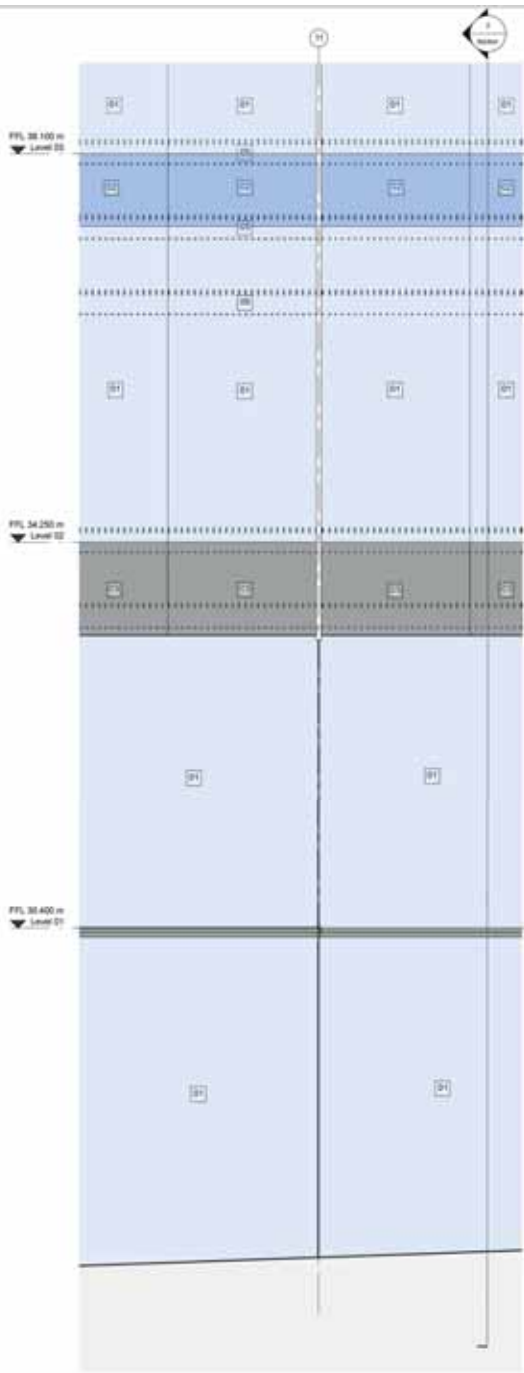
BENNETTS ASSOCIATES
 1 Riverside Plaza, London EC7Y 7NL
 T: +44(0)207 3203500 | www.bennettsassociates.com
 E: bennetts@bennettsassociates.com
 For further information, please visit our website
 www.bennettsassociates.com

Project: Site T2 KXC
 Kings Cross Central Partnership Ltd.

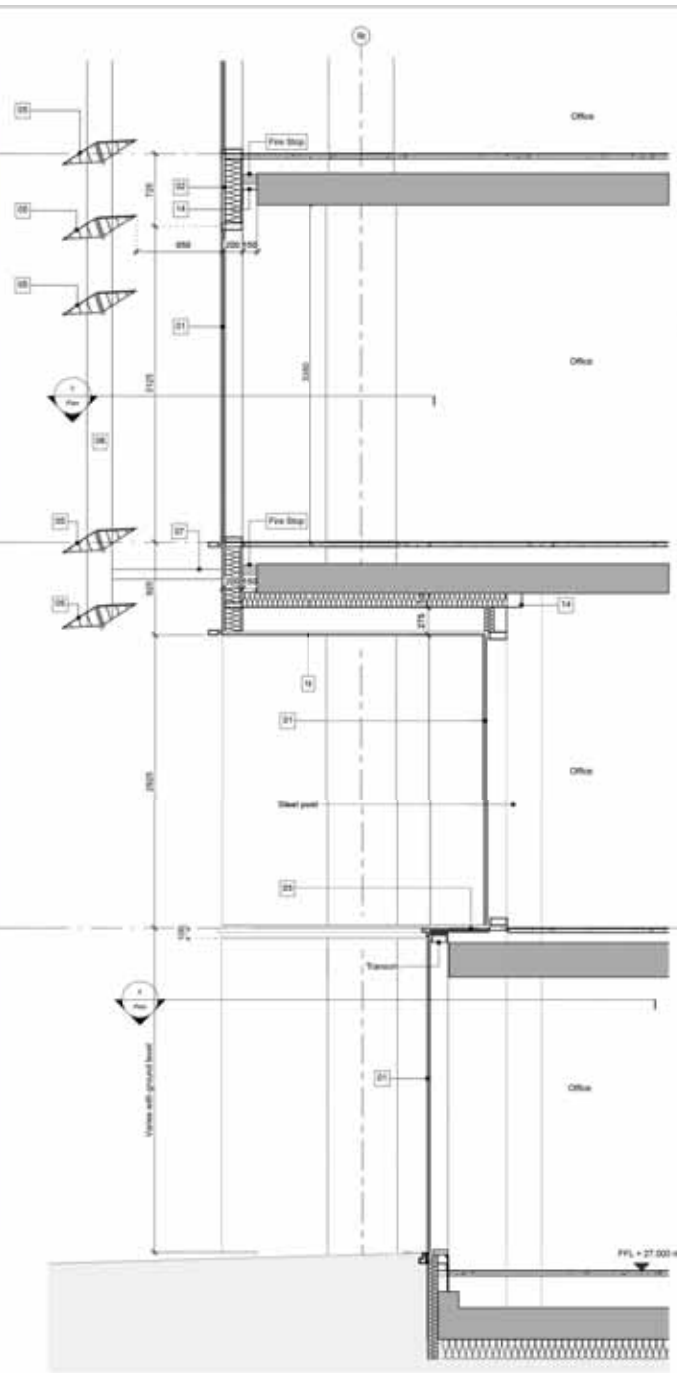
Project No: 1503
 Drawing Title: Facade Bay Study - Three Storey Colonnade

Drawing Number: KXC-T2-001-A-1503-F21-424
 Revision: 02

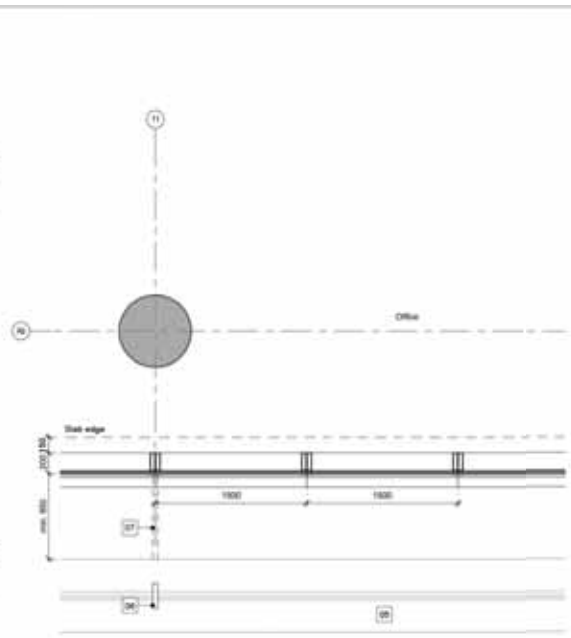
Scale @ A3: 1:50
 Scale @ A1: 1:25
 Revision Date: 19/11/19
 19/11/19



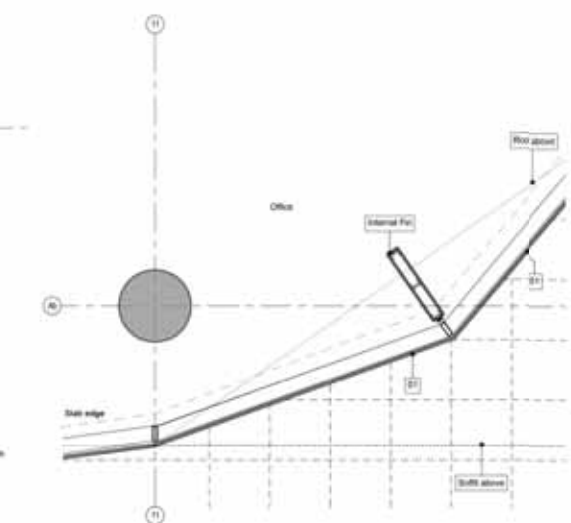
1 Elevation View



2 Section View



3 Plan View Level 02



4 Plan View Level GF

| Revision | By | CHK |
|----------|----------|---------------------|
| 01 | 18/12/18 | Issued for Planning |
| 02 | 18/12/18 | Issued for Planning |

Notes:

1. Steel edge detail as per Ref. 7801
2. Steel edge detail as per Ref. 7801
3. Steel edge detail as per Ref. 7801
4. Steel edge detail as per Ref. 7801
5. Steel edge detail as per Ref. 7801
6. Steel edge detail as per Ref. 7801
7. Steel edge detail as per Ref. 7801
8. Steel edge detail as per Ref. 7801
9. Steel edge detail as per Ref. 7801
10. Steel edge detail as per Ref. 7801
11. Steel edge detail as per Ref. 7801
12. Steel edge detail as per Ref. 7801
13. Steel edge detail as per Ref. 7801
14. Steel edge detail as per Ref. 7801
15. Steel edge detail as per Ref. 7801
16. Steel edge detail as per Ref. 7801
17. Steel edge detail as per Ref. 7801
18. Steel edge detail as per Ref. 7801
19. Steel edge detail as per Ref. 7801
20. Steel edge detail as per Ref. 7801

BENNETTS ASSOCIATES

1 Regent Street, London EC1A 3BS
 T +44(0)207 8222200 www.bennettsassociates.com
 E mail@bennettsassociates.com

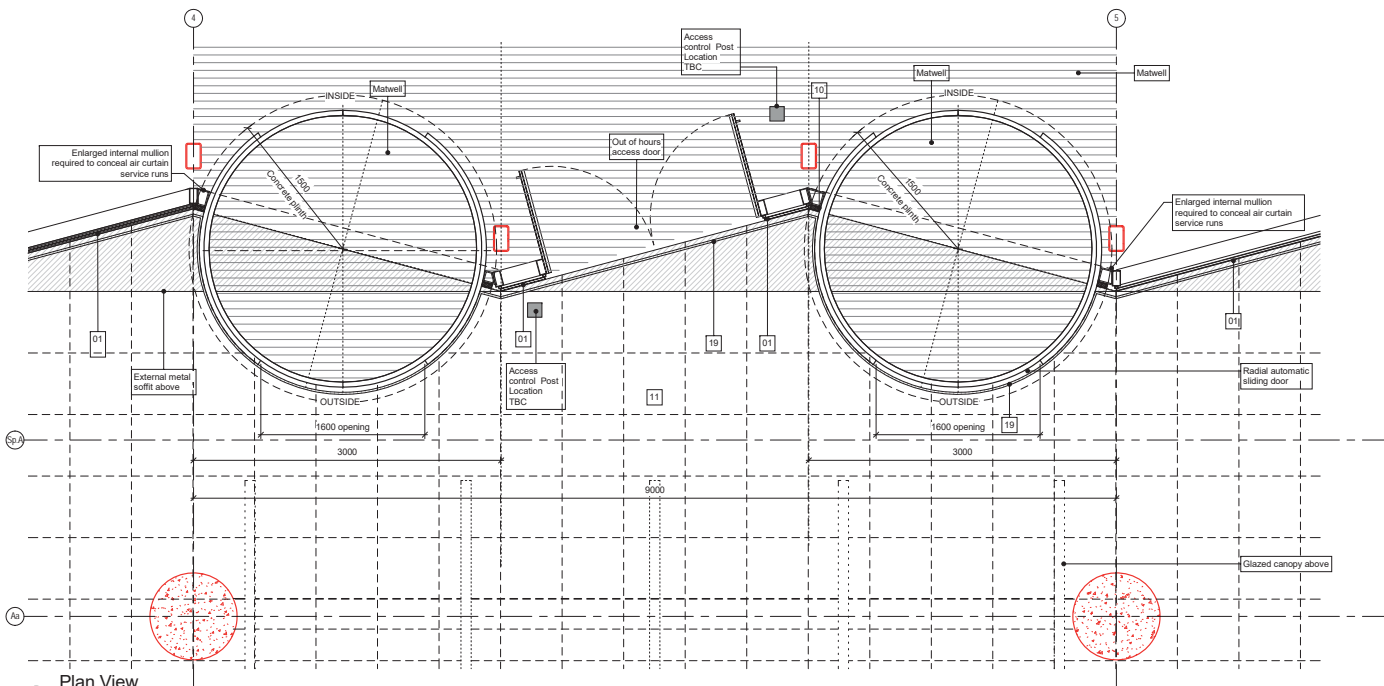
Project: Site T2 KXC Project No. 1529
 Kings Cross Central Partnership Ltd

Drawing Title: Facade Bay Study - Two Storey Colonnade

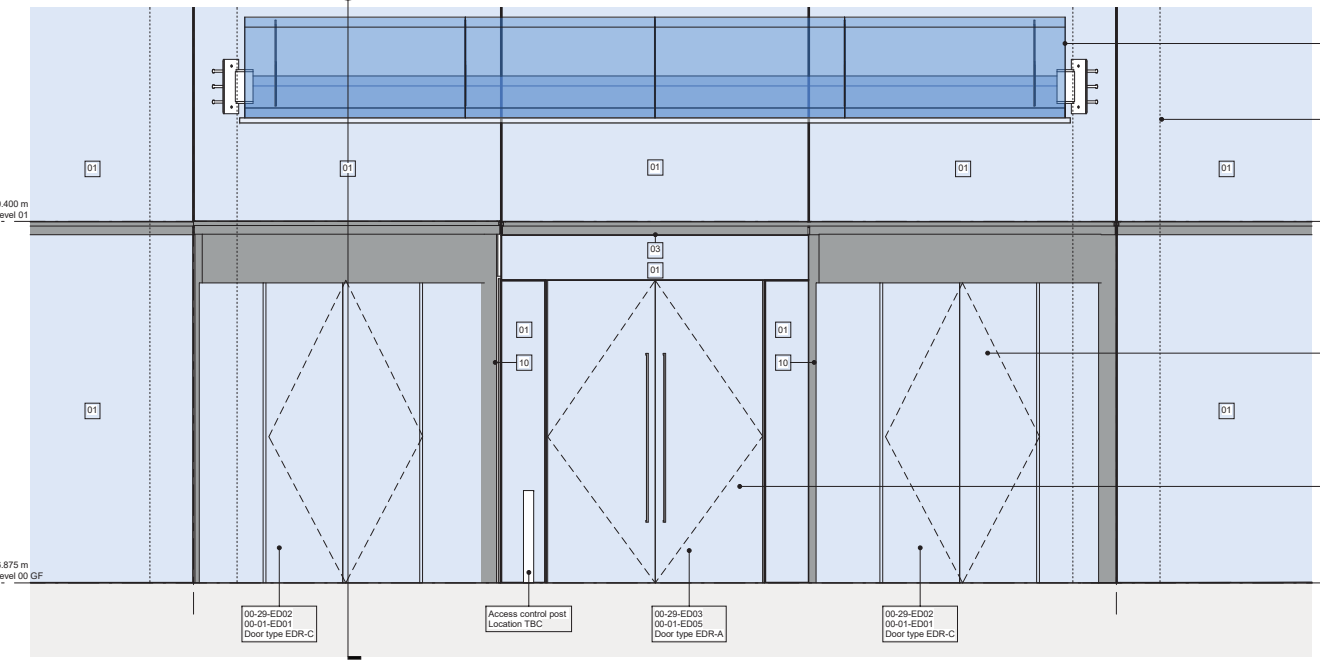
Drawing Number: KXC-T2-001-A-1503-P21-425 Revision: 02

Scale @ A3: 1:50 Scale @ A1: 1:25 Revision Date: 18/12/18

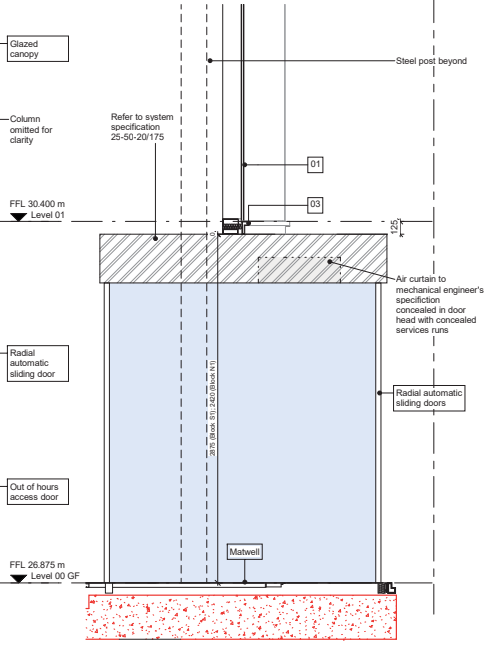
| Revisions | By | CHK |
|-------------------------------|----|-----|
| 01 160415 Issued for Planning | SD | MB |
| 02 181219 Issued for Planning | BH | SL |



1 Plan View



2 Elevation View

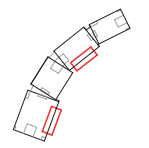


3 Section View

- Notes
- 01 Steel double glazed unit
 - 02 Backpainted (dark grey, RAL TBC) glazed panel (refer to FMCC details for mutation location)
 - 03 Bronze anodised aluminium metal fixed insulated panel
 - 04 Bronze anodised aluminium metal frame
 - 05 Horizontal perforated bronze anodised aluminium metal braces with exposed anodised aluminium framing
 - 06 Natural anodised aluminium metal hangers
 - 07 Natural anodised aluminium metal stops
 - 08 Laminated glass insulator with painted galv. steel frame (dark grey, RAL TBC)
 - 09 Metal drainage grille
 - 10 Laminated glass insulator with painted galv. steel frame (dark grey, RAL TBC)
 - 11 Refer to Landscape Consultant's documentation
 - 12 Refer to Landscape Consultant's documentation
 - 13 Opening insulated bronze (white, RAL TBC)
 - 14 Carbonised PVC aluminium sliding panel (vertical blind part of handset fit out)
 - 15 Perforated bronze anodised aluminium metal cladding
 - 16 Thermal concrete block
 - 17 Opening double glazed window (fixed fit only)
 - 18 Natural anodised aluminium metal soffits panel
 - 19 Slit door
 - 20 Laminated glazed unit
 - 21 Architectural frame
 - 22 Painted galvanneal metal screen bronze, RAL TBC
 - 23 Longspan composite metal insulated panel (European 'Espanpanel' or equivalent approval (RAL TBC))

To be read in conjunction with KXC-T2-001-A-1503-20-850
 To be read in conjunction with the (21)Series drawings and (20)Series plans, sections and elevations
 To be read in conjunction with Facade Consultant's Sketchbook and Specification
 Refer to Reef information for cleaning & maintenance, loadings and layouts
 Refer to Structural Engineer's information for loadings
 Refer to Services information for location and number of services penetrations and outlets

All Structure drawn in red for clarity
 Refer to Structural Engineer's drawings to confirm loadings
 All details are shown indicatively to describe design intent.
 Detailed design will be developed with specialist contractor as part of a CDP package



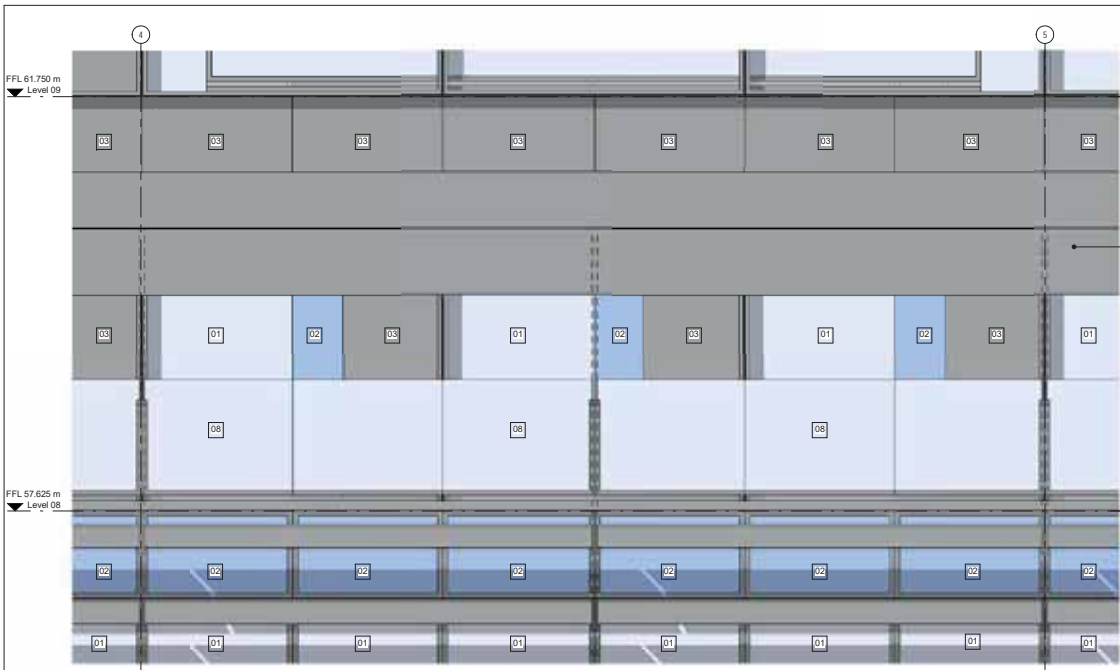
BENNETTS ASSOCIATES
 1 Rawstorne Place, London EC1V 7NL
 T +44(0)207 5203300 • www.bennettsassociates.com
 E mail@bennettsassociates.com
 For Bennett's Associates' electronic information issue disclaimer - www.bennettsassociates.com/informationaldisclaimer/

Project 1503
Site T2 KXC
 Kings Cross Central Partnership Ltd.

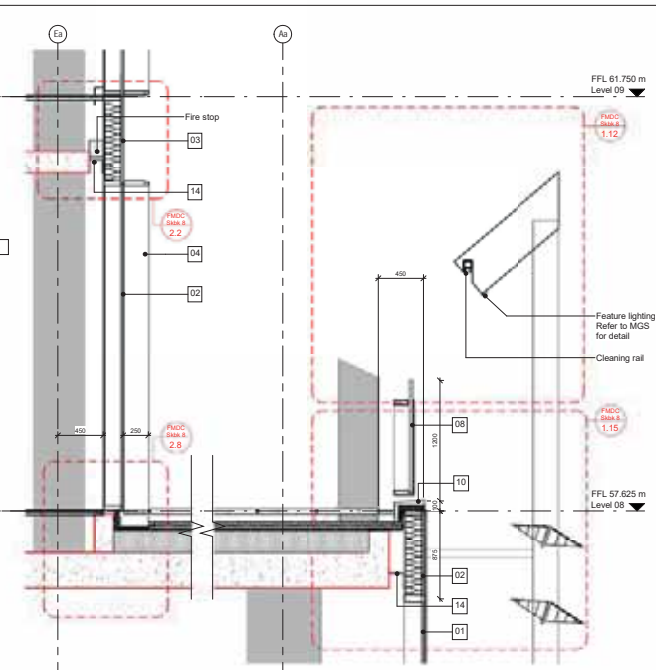
Drawing Title
Facade Bay Study - Reception Entrance

Drawing Number
 KXC-T2-001-A-1503-P21-427

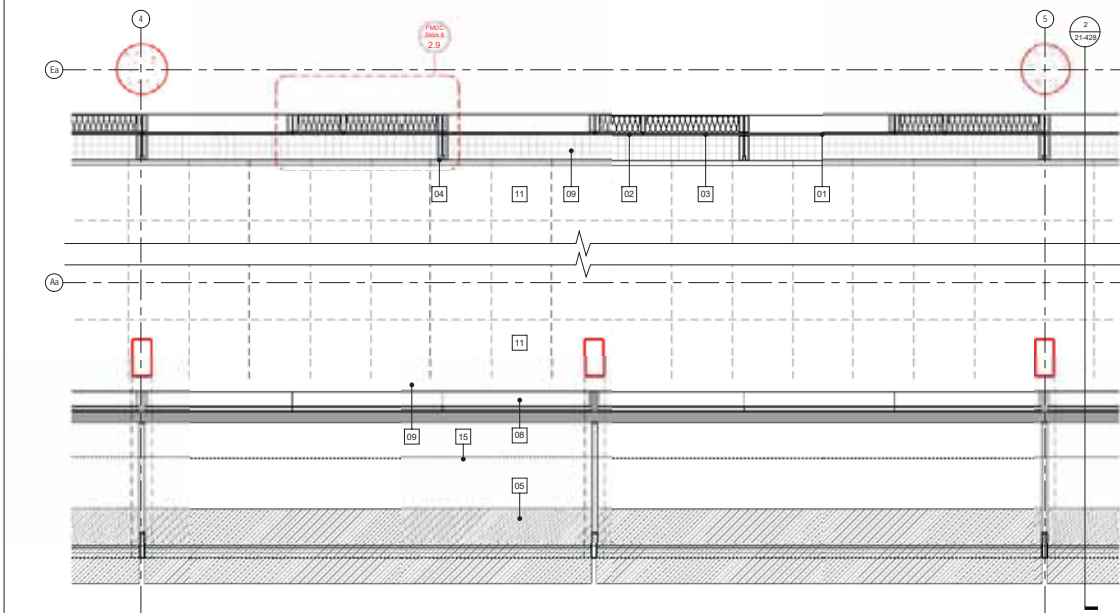
Scale @ A3 1:50
 Scale @ A1 1:25
 Revision Date 181219
 Revision 02
 YMM/DD



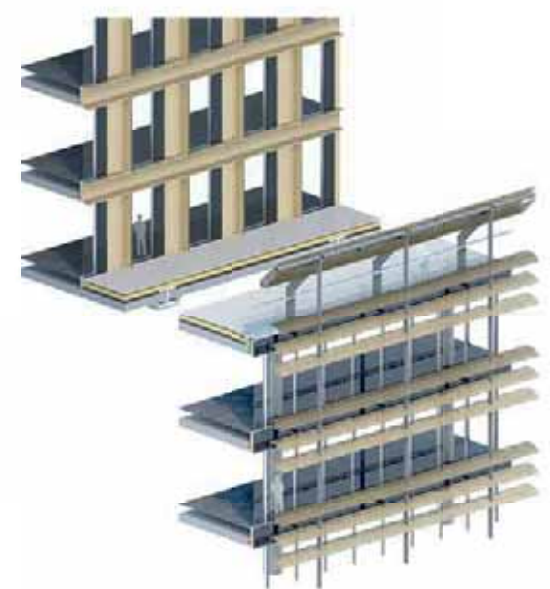
1 Elevation (louvres and brise soleil frame dashed for clarity)



2 Section



3 Plan Level 08



4 3D View

| Revisions | By | CHK |
|-------------------------------|----|-----|
| 01 160415 Issued for Planning | DC | MB |
| 02 181219 Issued for Planning | BH | SL |

Notes

01 Sealed double glazed unit
 02 Backpainted (dark grey, RAL TBC) glazed panel (refer to FMCC details for transition location)
 03 Bronze anodised aluminium metal fixed insulated panel
 04 Bronze anodised aluminium metal frames
 05 Horizontal perforated bronze anodised aluminium metal louvres with exposed anodised aluminium framing
 06 Natural anodised aluminium metal louvres
 07 Natural anodised aluminium metal props
 08 Laminated glass (acoustic with perforated glass, steel frame (dark grey, RAL TBC))
 09 Metal drainage gullies
 10 Bronze anodised aluminium metal flashing
 11 Refer to Landscape Consultancy documentation
 12 Refer to Landscape Consultancy documentation
 13 Concrete structural concrete (RAL TBC)
 14 Continuous PPC aluminium closing piece (vertical blind part of fanest fit out)
 15 Reflected bronze anodised aluminium metal cladding
 16 Precast concrete plinth
 17 Clearing double glazed window (fixed 03 only)
 18 Natural anodised aluminium metal soffit panel
 19 Steel frame
 20 Laminated glass unit
 21 Architectural louvre
 22 Partial glazed metal screen (bronze, RAL TBC)
 23 Longspan composite metal insulated panel, Eurobond European or equivalent approval (RAL TBC)

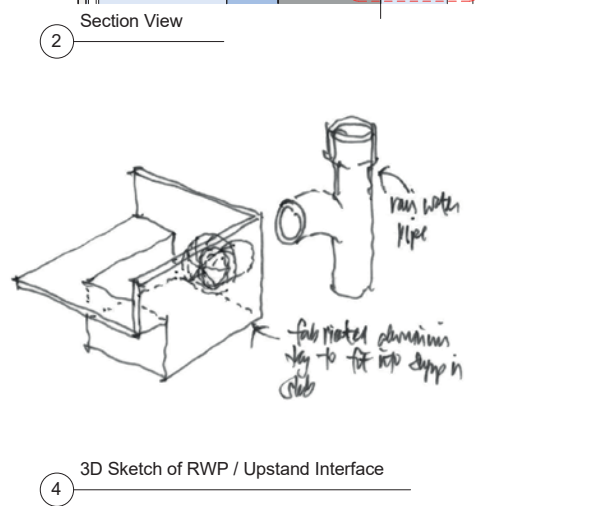
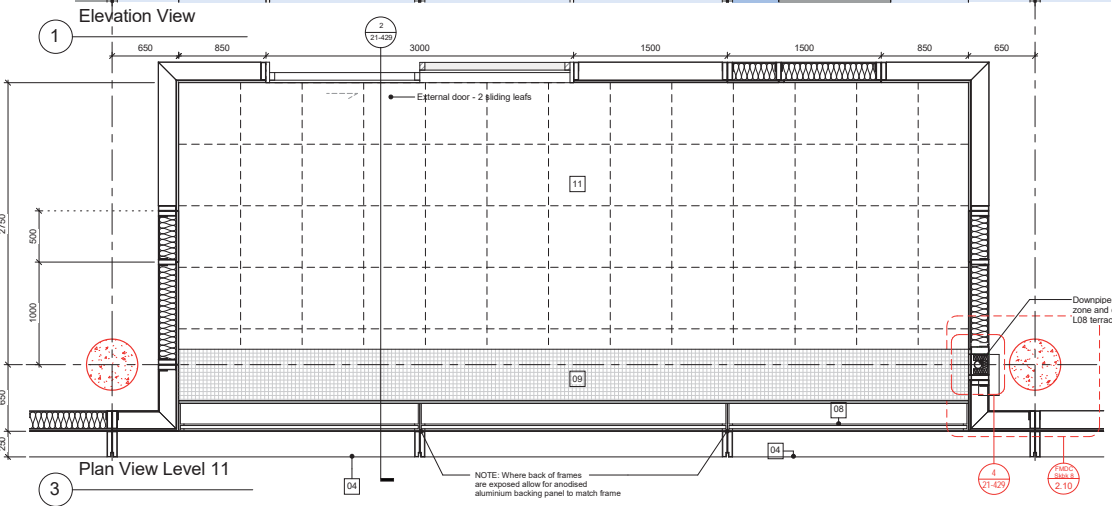
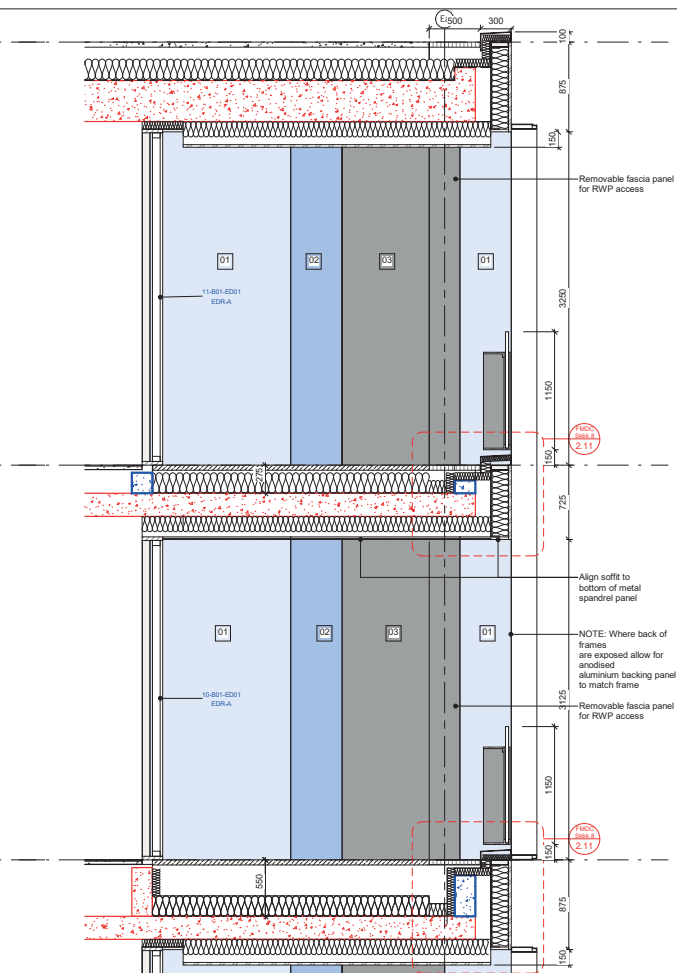
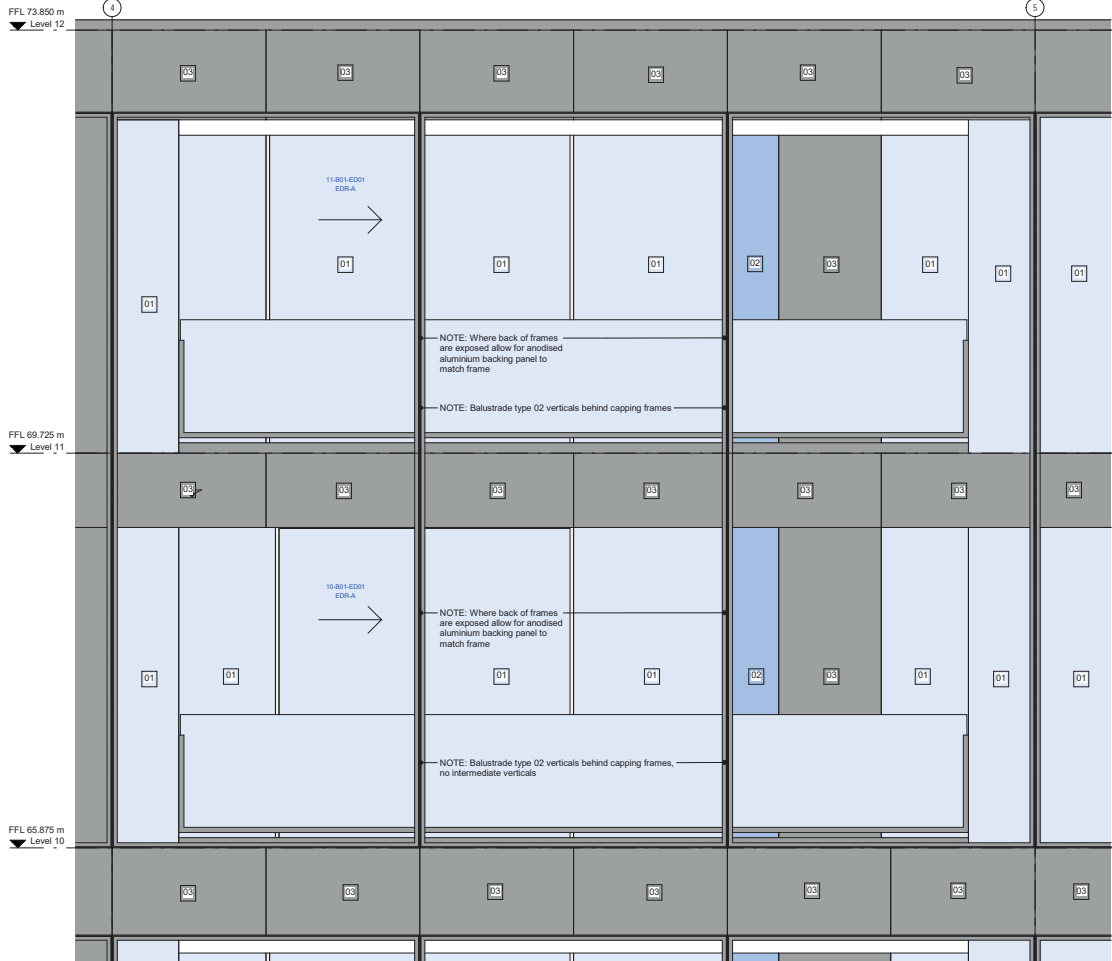
To be read in conjunction with KXC-T2-001-A-1503-20-850
 To be read in conjunction with the (21)Series drawings and (20)Series plans, sections and elevations
 To be read in conjunction with Facade Consultant's Sketchbook and Specification
 Refer to Reef information for cleaning & maintenance, loadings and layouts
 Refer to Structural Engineer's information for loadings
 Refer to Services information for location and number of services penetrations and outlets

All Structure drawn in red for clarity
 Refer to Structural Engineer's drawings to confirm loadings
 All details are shown indicatively to describe design intent.
 Detailed design will be developed with specialist contractor as part of a CDP package

BENNETTS ASSOCIATES
 1 Rawstone Place, London EC1V 7NL
 T +44(0)207 5203300 • www.bennettsassociates.com
 E mail@bennettsassociates.com
 For Bennett Associates' electronic information issue disclaimer - www.bennettsassociates.com/information/Disclaimer/

Project No. 1503
 Project Site T2 KXC
 Kings Cross Central Partnership Ltd.
 Drawing Title
 Facade Bay Study - Level 08 Terrace / Office Floor

Drawing Number KXC-T2-001-A-1503-P21-428
 Revision 02
 Scale @ A3 1:50
 Scale @ A1 1:25
 Revision Date 181219
 YY MM DD



| Revisions | Issued for Planning | By | CHK |
|-----------|---------------------|----|-----|
| 01 | 160415 | OC | MB |
| 02 | 181219 | SH | SL |

Notes

- 01 Insulated double glazed unit
- 02 Backpainted (dark grey, RAL TBC) glazed panel (refer to FMOC details for mutation location)
- 03 Bronze anodised aluminium metal fixed insulated panel
- 04 Bronze anodised aluminium metal frame
- 05 Horizontal perforated bronze anodised aluminium metal brises with exposed anodised aluminium framing
- 06 Natural anodised aluminium metal hangers
- 07 Natural anodised aluminium metal strips
- 08 Laminated glass balustrade side with painted galv. steel frame (dark grey, RAL TBC)
- 09 Metal drainage grille
- 10 Bronze anodised aluminium metal railing
- 11 Refer to Landscape Consultant's documentation
- 12 Refer to Landscape Consultant's documentation
- 13 Opening insulated brise (white, RAL TBC)
- 14 Carbonaceous (PVC) aluminium cladding panel (revelation blind part of least 80 mm)
- 15 Perforated bronze anodised aluminium metal cladding
- 16 Thermal concrete depth
- 17 Opening double glazed window (fixed) (30 mm)
- 18 Natural anodised aluminium metal soffit panel
- 19 Soffit panel
- 20 Laminated glazed unit
- 21 Architectural frame
- 22 Painted galvanneal metal screen bronze, RAL TBC
- 23 Longspan composite metal insulated panel (Esobond 'Esopanel' or equivalent approved (RAL TBC))

To be read in conjunction with KCC-T2-001-A-1503-20-850

To be read in conjunction with the (21)Series drawings and (20)Series plans, sections and elevations

To be read in conjunction with Facade Consultant's Sketchbook and Specification

Refer to Reef information for cleaning & maintenance, loadings and layouts

Refer to Structural Engineer's information for loadings

Refer to Services information for location and number of services penetrations and outlets

All Structure drawn in red for clarity

Refer to Structural Engineer's drawings to confirm loadings

All details are shown indicatively to describe design intent.

Detailed design will be developed with specialist contractor as part of a CDP package

BENNETTS ASSOCIATES

1 Rawstorne Place, London EC1V 7NL
T +44(0)207 5203300 • www.bennettsassociates.com
E mail @bennettsassociates.com

For Bennetts Associates' electronic information issue disclaimer - www.bennettsassociates.com/informationaldisclaimer/

Project 1503
Site T2 KXC
Kings Cross Central Partnership Ltd.

Drawing Title
Facade Bay Study
East Elevation - Level 09-10 Balcony / Sedum Roof

Drawing Number
KXC-T2-001 -A-1503-P21-429 02

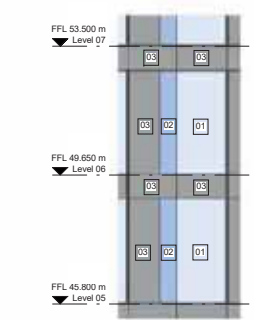
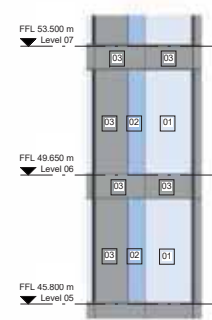
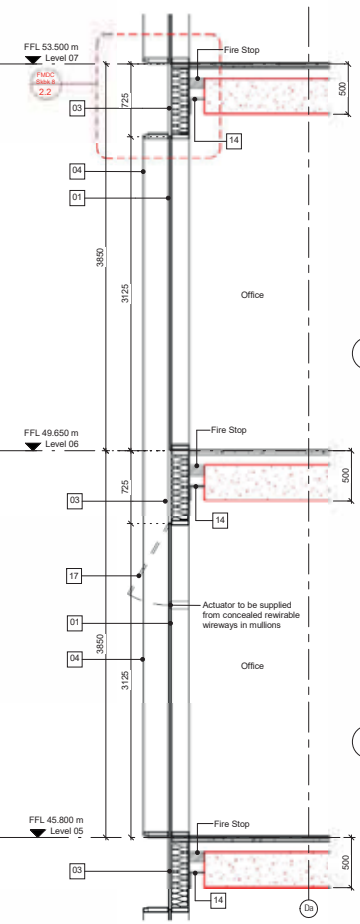
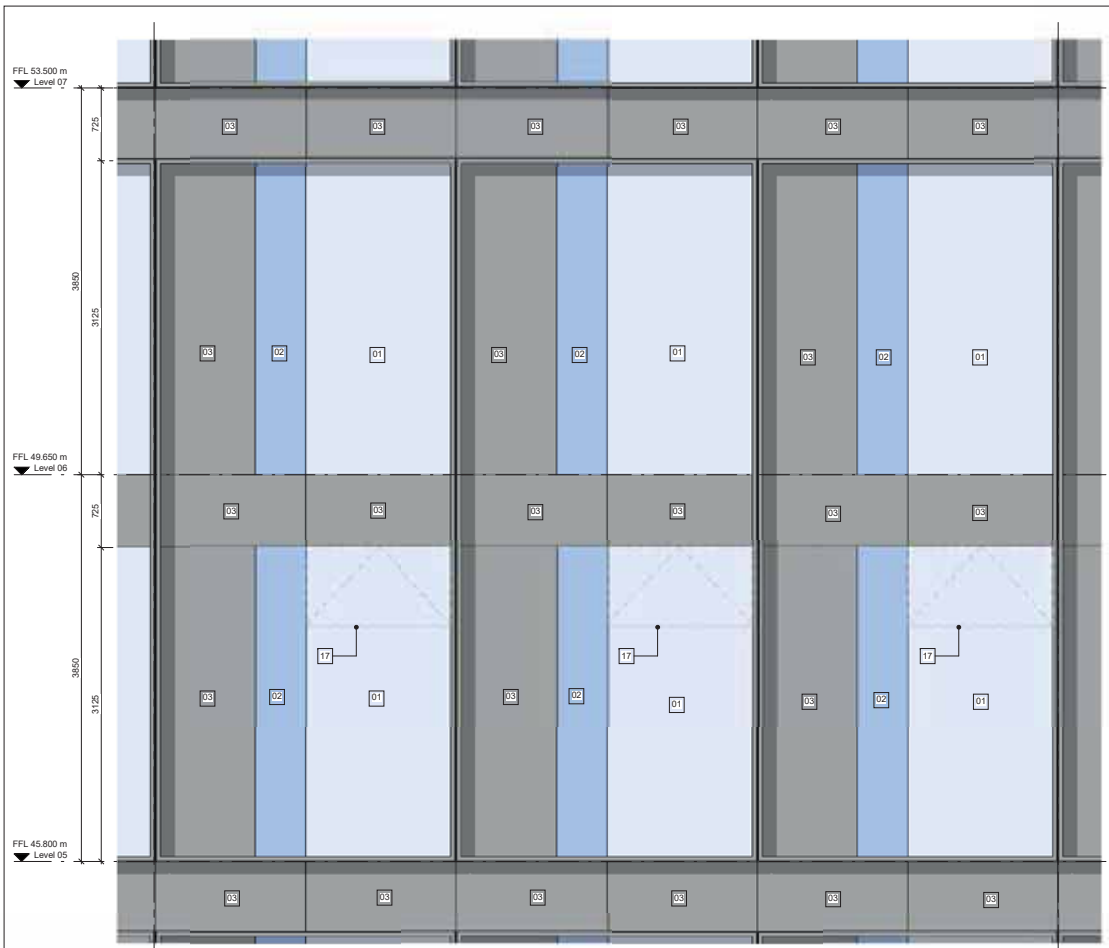
Revision
02

Scale @ A3
1 : 50

Scale @ A1
1 : 25

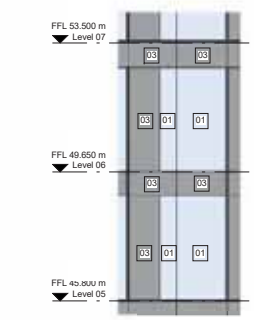
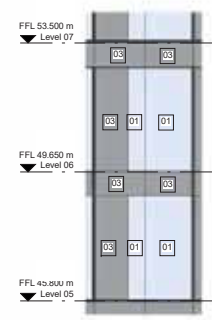
Revision Date
181219

YYMMDD



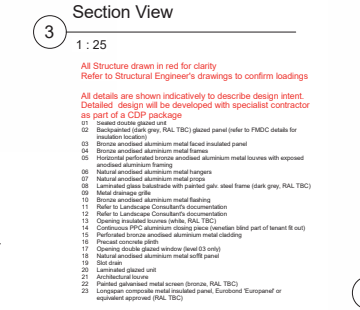
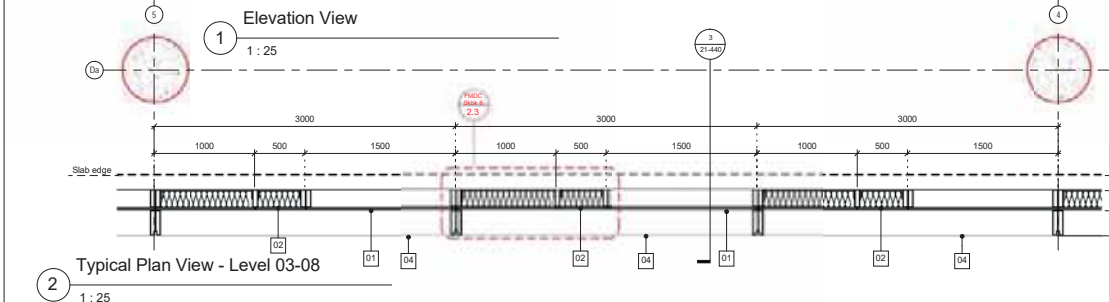
Block S1
1:75

Block S2
1:75



Block N1
1:75

Block N2
1:75



3D View
1:25

| Revisions | By | Chk | Revisions | By | Chk | Notes |
|-------------------------------|----|-----|-----------|----|-----|--|
| 01 160415 Issued for Planning | DC | MB | | | | To be read in conjunction with KXC-T2-001-A-1503-20-850 |
| 02 181219 Issued for Planning | BH | SL | | | | To be read in conjunction with the (21)Series drawings and (20)Series plans, sections and elevations |
| | | | | | | To be read in conjunction with Facade Consultant's Sketchbook and Specification |
| | | | | | | Refer to Reef information for cleaning & maintenance, loadings and layouts |
| | | | | | | Refer to Structural Engineer's information for loadings |
| | | | | | | Refer to Services information for location and number of services penetrations and outlets |

BENNETTS ASSOCIATES

1 Rawstone Place, London EC1V 7NL
 T +44(0)207 5203300 - www.bennettsassociates.com
 E mail@bennettsassociates.com

Project
Site T2 KXC
 Kings Cross Central Partnership Ltd.

Drawing Title
Facade Bay Study
 West Elevation
 Typical Office Floor

Drawing Number
KXC-T2-001-A1503-P21-440

Revision/Suitability
02

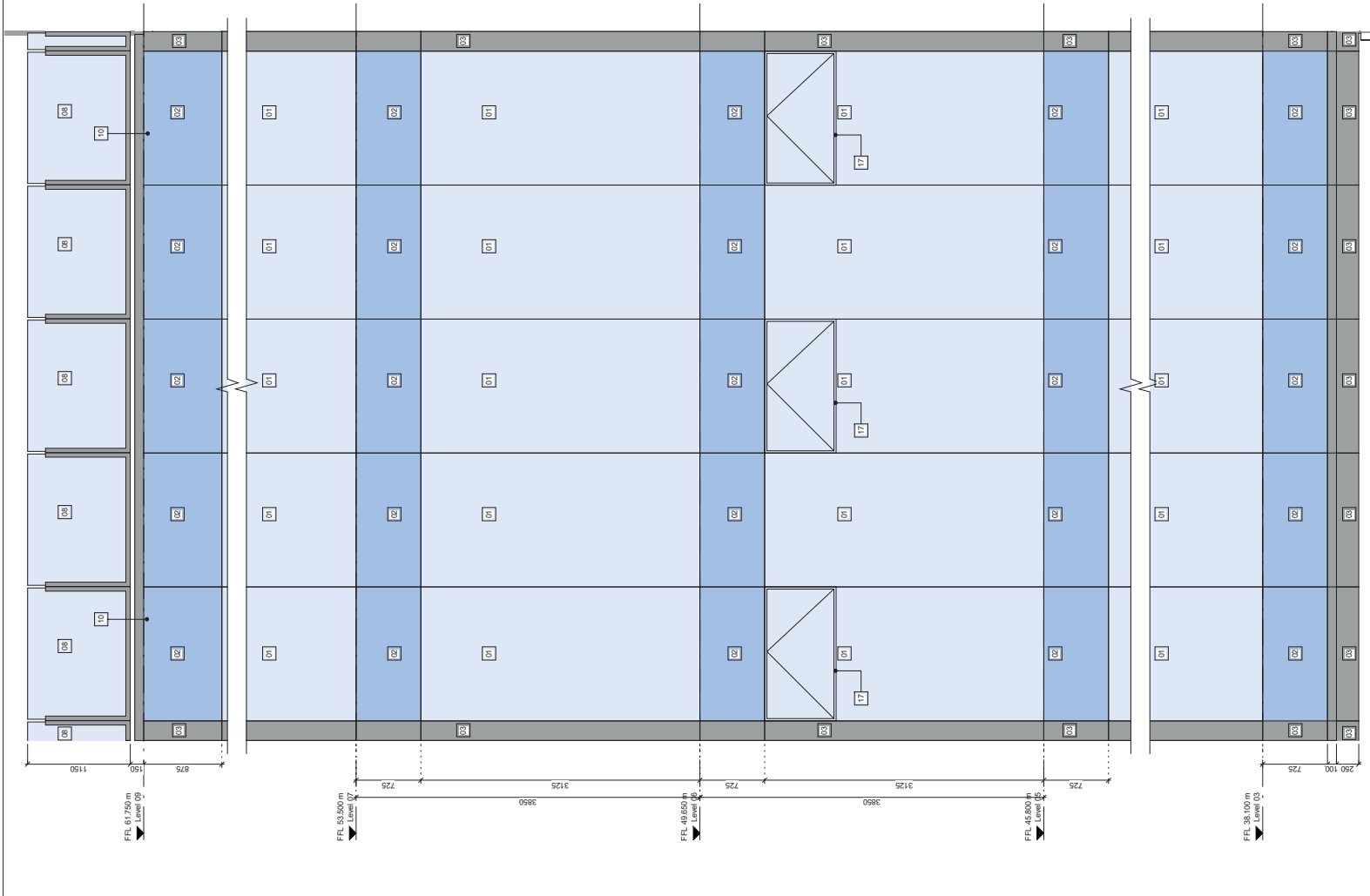
Scale @ A3
 As indicated

Scale @ A1
 As indicated

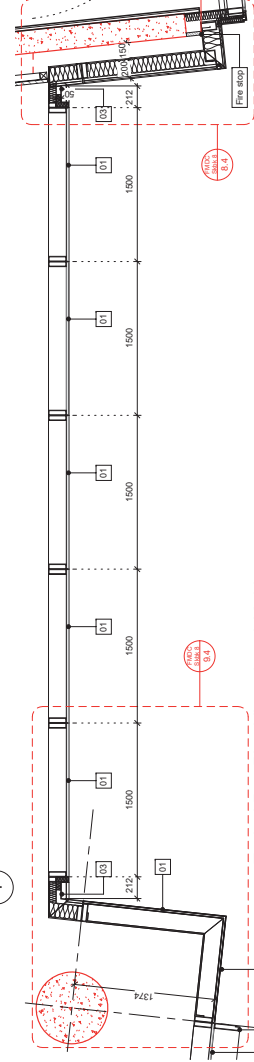
Revision Date
 181219

Project No. 1503

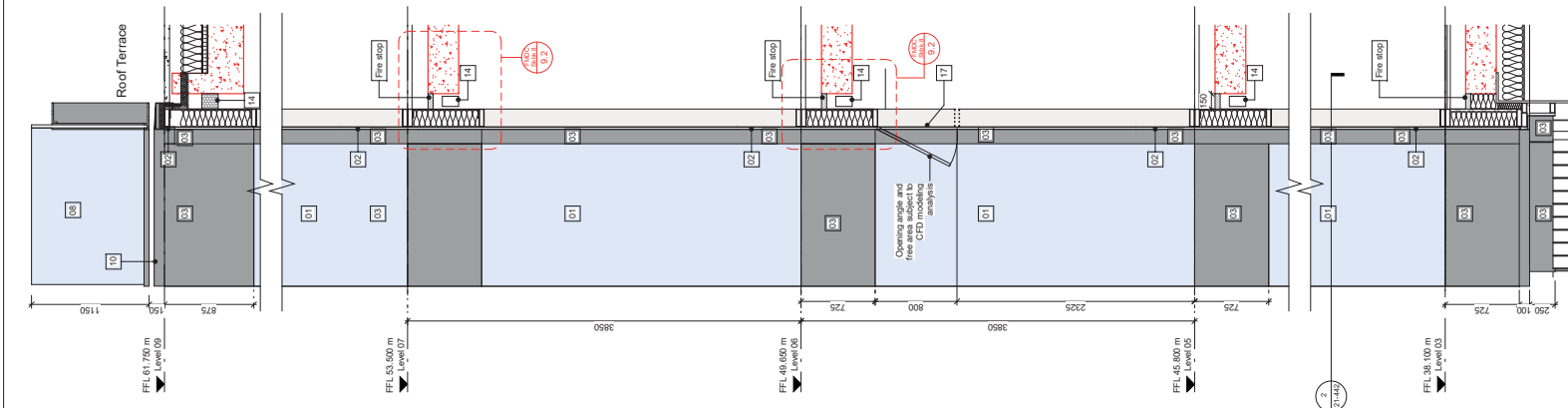
YY MM DD



1 Elevation View



3 Section View



All Structure drawn in red for clarity. Refer to Structure Engineer's drawings to confirm loadings. All details are shown indicatively to describe design intent, and are to be developed in cooperation with specialist contractor as part of a CDP package.

To be read in conjunction with KCC-T2-001-T-002-02-028.

To be read in conjunction with the 01/2020 drawings and 020 Series notes, sections and elevations.

To be read in conjunction with Fassade Consultant's Sketchbook and Specification.

Refer to Bred information for cleaning & maintenance, loadings and layout.

Refer to Structural Engineer's information for loadings, penetration details, penetration location and number of services penetrations and outlets.

Revisions
 01 18/05/15 Issued for Planning
 02 08/08/16 Revised for Planning

By: CKK
 DC: MB
 DN: SL

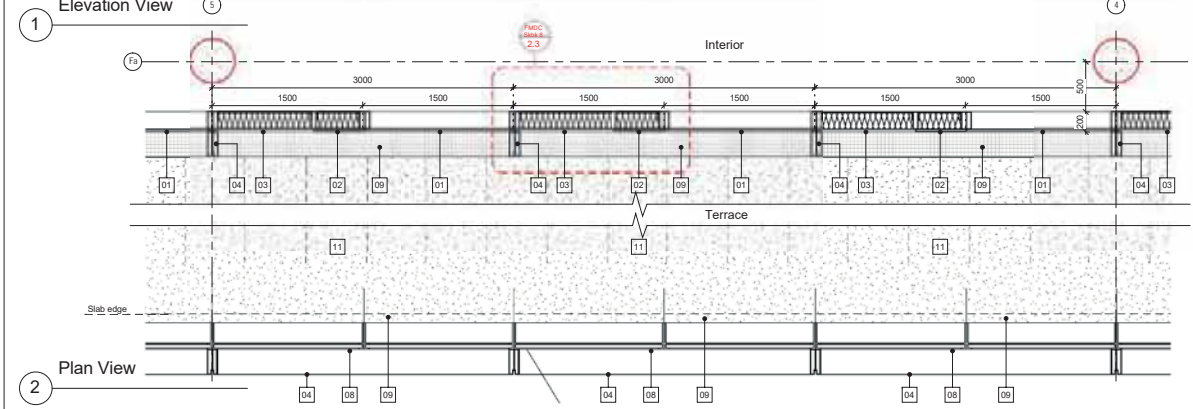
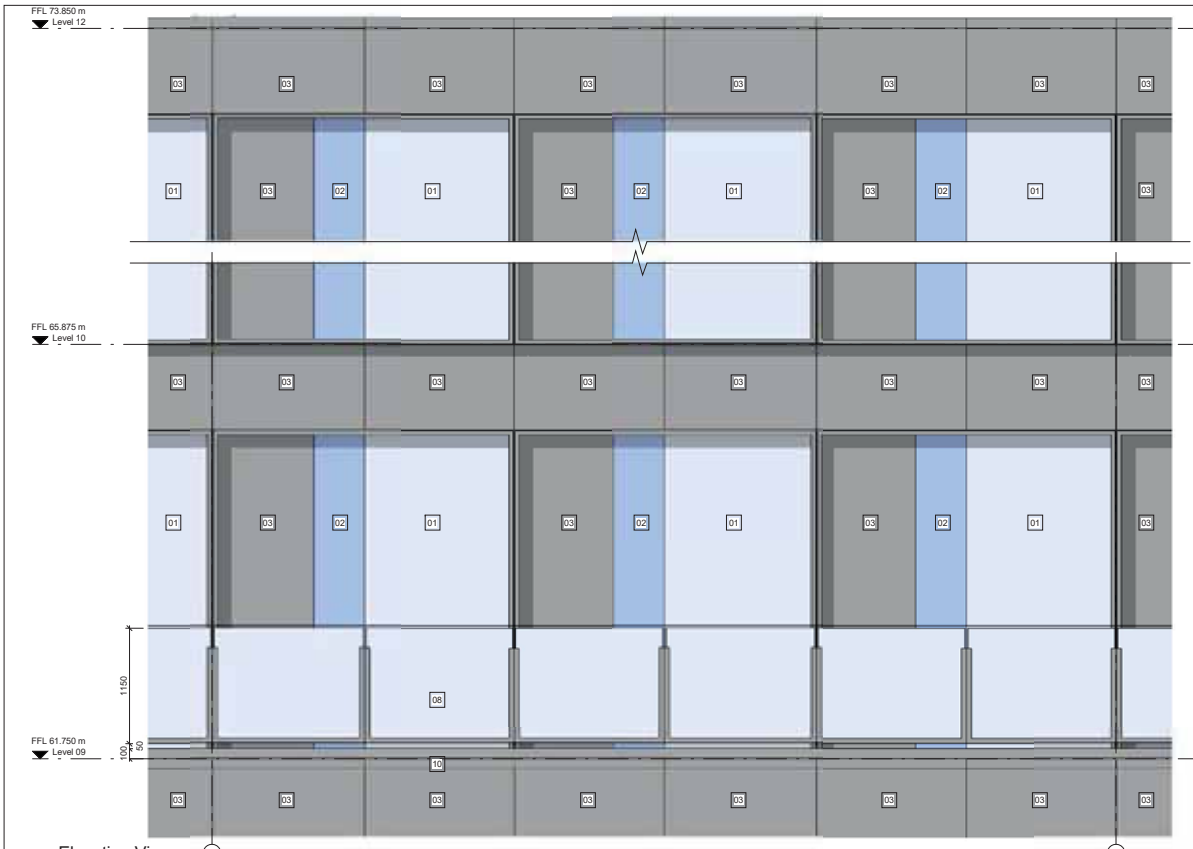
Notes
 01: Structural drawings (RA, B/C) (and party/RA) to be checked for revision location
 02: Structural drawings (RA, B/C) (and party/RA) to be checked for revision location
 03: Structural drawings (RA, B/C) (and party/RA) to be checked for revision location
 04: Structural drawings (RA, B/C) (and party/RA) to be checked for revision location
 05: Structural drawings (RA, B/C) (and party/RA) to be checked for revision location
 06: Structural drawings (RA, B/C) (and party/RA) to be checked for revision location
 07: Structural drawings (RA, B/C) (and party/RA) to be checked for revision location
 08: Structural drawings (RA, B/C) (and party/RA) to be checked for revision location
 09: Structural drawings (RA, B/C) (and party/RA) to be checked for revision location
 10: Structural drawings (RA, B/C) (and party/RA) to be checked for revision location
 11: Structural drawings (RA, B/C) (and party/RA) to be checked for revision location
 12: Structural drawings (RA, B/C) (and party/RA) to be checked for revision location
 13: Structural drawings (RA, B/C) (and party/RA) to be checked for revision location
 14: Structural drawings (RA, B/C) (and party/RA) to be checked for revision location
 15: Structural drawings (RA, B/C) (and party/RA) to be checked for revision location
 16: Structural drawings (RA, B/C) (and party/RA) to be checked for revision location
 17: Structural drawings (RA, B/C) (and party/RA) to be checked for revision location
 18: Structural drawings (RA, B/C) (and party/RA) to be checked for revision location
 19: Structural drawings (RA, B/C) (and party/RA) to be checked for revision location
 20: Structural drawings (RA, B/C) (and party/RA) to be checked for revision location
 21: Structural drawings (RA, B/C) (and party/RA) to be checked for revision location
 22: Structural drawings (RA, B/C) (and party/RA) to be checked for revision location

BENNETTS ASSOCIATES
 1 Bawtorney Place, London EC1V 7NL
 T +44(0)207 520 3300 • www.bennettsassociates.com
 E mail@bennettsassociates.com
 www.bennettsassociates.com

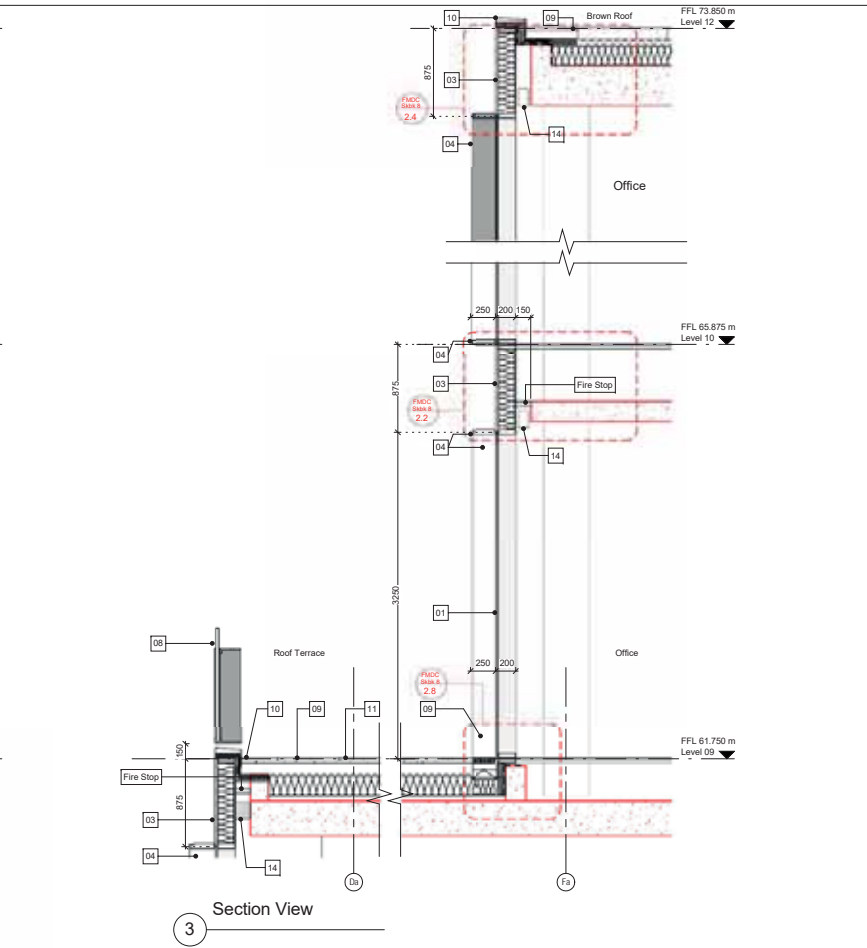
Project
Site T2 KXC
 Kings Cross Central Partnership Ltd.

Project No. 1503
 Drawing Number
 KCC-T2-001-A1-050-P21-142
 Scale @ A1
 1:50
 Revision Date
 18/12/19

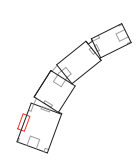
Revision/
 Authority
 02
 Scale @ A1
 1:25
 Revision Date
 18/12/19
 v02.00



| Revisions | By | Chk | Revisions | By | Chk | Notes |
|-------------------------------|----|-----|-----------|----|-----|--|
| 01 160415 Issued for Planning | DC | MB | | | | To be read in conjunction with KXC-T2-001-A-1503-20-850 |
| 02 181219 Issued for Planning | BH | SL | | | | To be read in conjunction with the (21)Series drawings and (20)Series plans, sections and elevations |
| | | | | | | To be read in conjunction with Facade Consultant's Sketchbook and Specification |
| | | | | | | Refer to Reef information for cleaning & maintenance, loadings and layouts |
| | | | | | | Refer to Structural Engineer's information for loadings |
| | | | | | | Refer to Services information for location and number of services penetrations and outlets |



- All Structure drawn in red for clarity
Refer to Structural Engineer's drawings to confirm loadings
- All details are shown indicatively to describe design intent.
Detailed design will be developed with specialist contractor as part of a CDP package
- 01 Beaded double glazed unit
 - 02 Backpainted (dark grey, RAL TBC) glazed panel (refer to FMDC details for installation details)
 - 03 Bronze anodised aluminium metal faced insulated panel
 - 04 Bronze anodised aluminium metal frame
 - 05 Functional perforated bronze anodised aluminium metal louvre with exposed anodised aluminium framing
 - 06 Natural anodised aluminium metal hangar
 - 07 Natural anodised aluminium metal prop
 - 08 Laminated glass insitu with perforated galv. steel frame (dark grey, RAL TBC)
 - 09 Metal drainage grille
 - 10 Bronze anodised aluminium metal flashing
 - 11 Refer to Landscape Consultant's documentation
 - 12 Refer to Landscape Consultant's documentation
 - 13 Corrosion resistant bronze (RAL TBC)
 - 14 Continuous PFC aluminium cladding gable (overlap blind part of tenant fit out)
 - 15 Prefabricated bronze anodised aluminium metal casing
 - 16 Precast concrete plinth
 - 17 Clearing double glazed window (level 03 only)
 - 18 Natural anodised aluminium metal roof panel
 - 19 Silver finish
 - 20 Laminated glass unit
 - 21 Architectural louvre
 - 22 Painted galvanneal metal screen (bronze, RAL TBC)
 - 23 Longspan composite metal insulated panel, Eurobond 'European' or equivalent approved (RAL TBC)



BENNETTS ASSOCIATES

1 Rawstone Place, London EC1V 7NL
T +44(0)207 5033300 • www.bennettsassociates.com
E mail@bennettsassociates.com

For Bennett's Associates' electronic information reuse disclaimer - www.bennettsassociates.com/informationdisclaimer/

Project: Site T2 KXC
Kings Cross Central Partnership Ltd.

Drawing Title: Facade Bay Study - Accessible Roof Terrace / Office Floor

Drawing Number: KXC-T2-001-A1503-P21-444

Revision/Suitability: 02

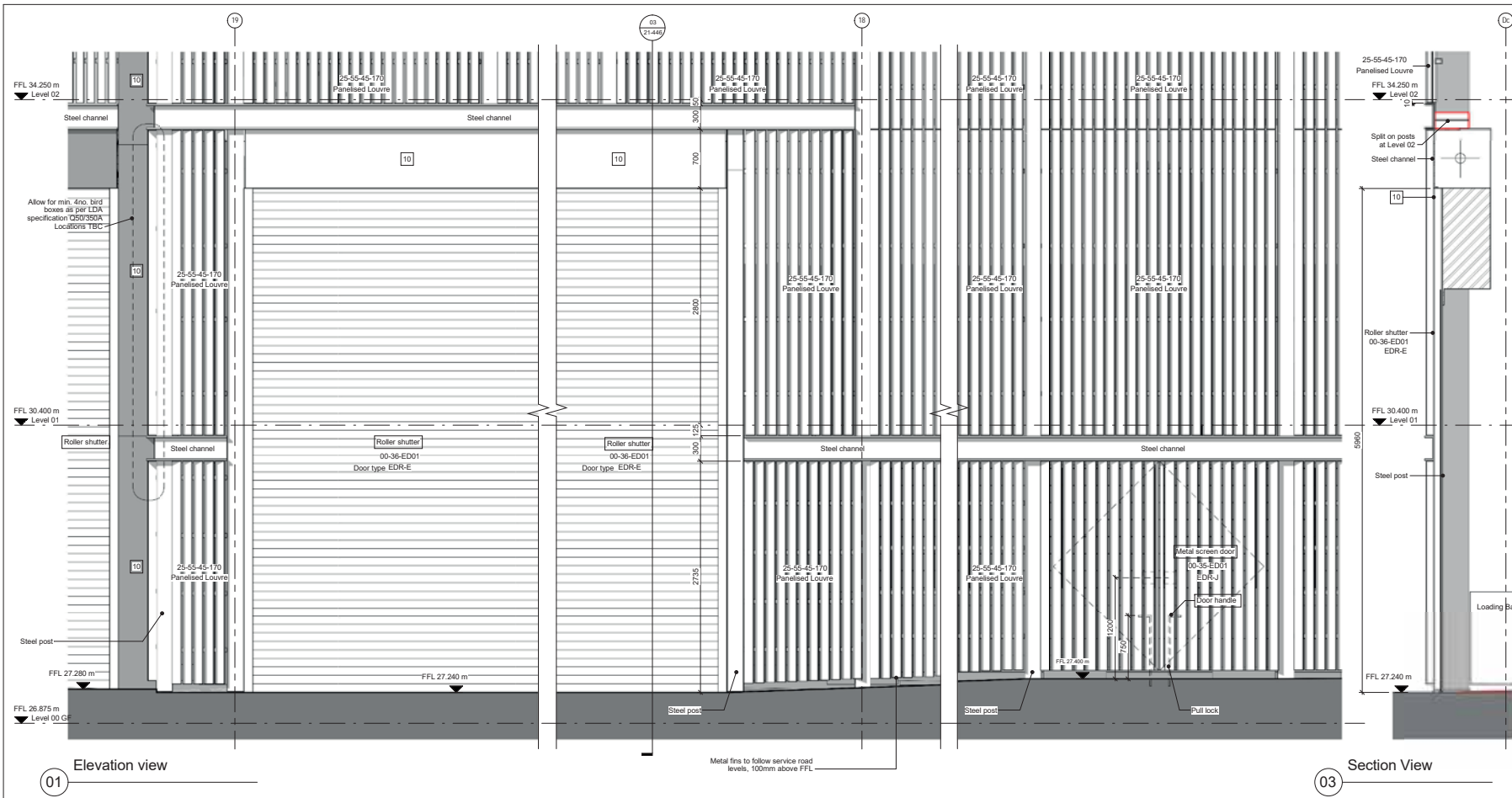
Scale @ A3: 1:50 | Scale @ A1: 1:25

Revision Date: 181219

Project No. 1503

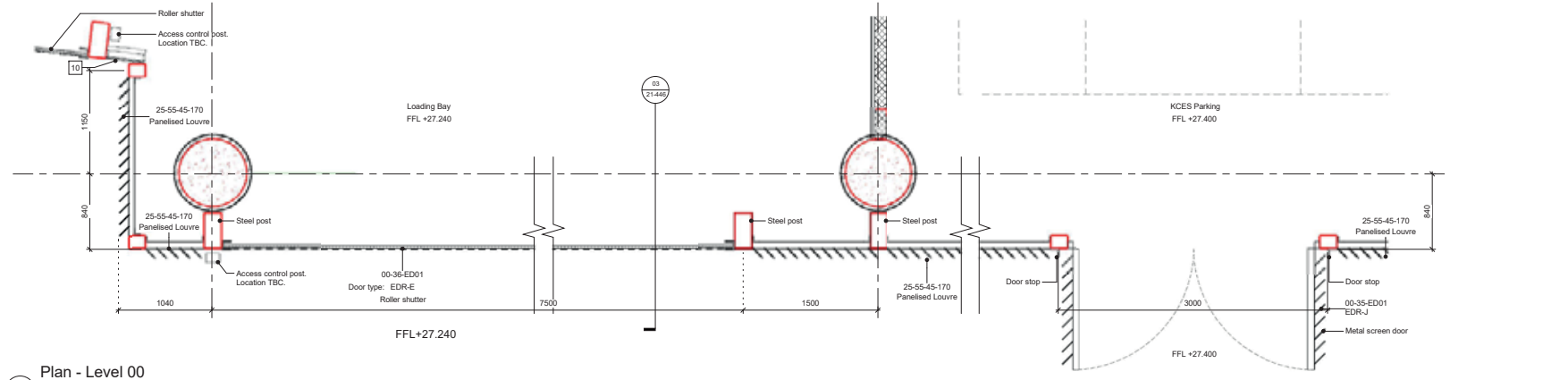
YY MM DD

| Revisions | Issued for Planning | By | CHK |
|-----------|---------------------|----|-----|
| 01 160415 | Issued for Planning | SD | MB |
| 02 181219 | Issued for Planning | BH | SL |



01 Elevation view

03 Section View



02 Plan - Level 00

Notes

To be read in conjunction with KXC-T2-001-A-1503-20-850
 To be read in conjunction with the (21)Series drawings and (20)Series plans, sections and elevations
 To be read in conjunction with Facade Consultants Sketchbook and Specification
 Refer to Reef information for cleaning & maintenance, loadings and layouts
 Refer to Structural Engineer's drawings for loadings
 Refer to Services information for location and number of services penetrations and outlets
 Metal fins to follow service road levels, 100mm above FFL

All Structure drawn in red for clarity
 Refer to Structural Engineer's drawings to confirm loadings
 All details are shown indicatively to describe design intent.
 Detailed design will be developed with specialist contractor as part of a CDP package

- 1: Metal double glazed unit
- 2: Backpanned (dark grey, RAL TBC) glazed panel (refer to FMDC details for translucent finishes)
- 3: Bronze anodised aluminium metal framed insulated panel
- 4: Bronze anodised aluminium metal frames
- 5: Horizontal perforated bronze anodised aluminium metal louvers with exposed natural anodised aluminium metal hangars
- 6: Natural anodised aluminium metal props
- 7: Laminated glass substrate with perforated glass steel frame (dark grey, RAL TBC)
- 8: Metal drainage gullies
- 9: Bronze anodised aluminium metal flashing
- 10: Refer to Larcher's Consultant's documentation
- 11: Refer to Larcher's Consultant's documentation
- 12: Refer to Larcher's Consultant's documentation
- 13: Opening double glazed window (RAL, TBC)
- 14: Continuous PPC aluminium closing piece (vertical blind part of tenant fit out)
- 15: Polished bronze anodised aluminium metal cladding
- 16: Precast concrete slab
- 17: Opening double glazed window (level 03 units)
- 18: Natural anodised aluminium metal self panel
- 19: Self drain
- 20: Laminated glazed unit
- 21: Horizontal bronze anodised aluminium metal frames
- 22: Laminated composite metal insulated panel, Eurobond / Europanel or equivalent approved (RAL, TBC)

BENNETTS ASSOCIATES

1 Rawstone Place, London EC1V 7NL
 T +44(0)207 5203300 www.bennettsassociates.com
 E mail@bennettsassociates.com

For Bennett's Associates' electronic information issue disclaimer - www.bennettsassociates.com/informationdisclaimer/

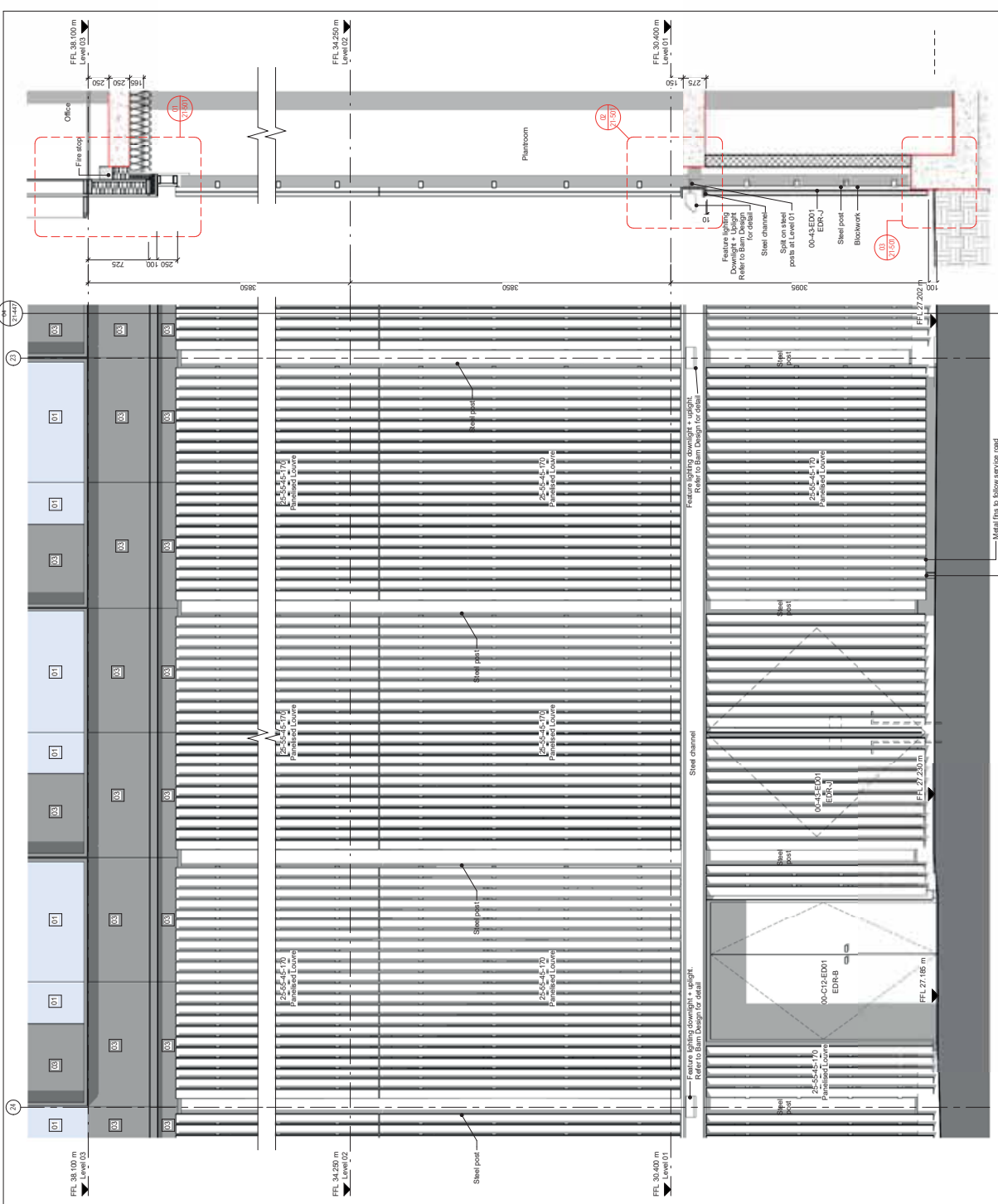
Project No. 1503
Site T2 KXC
 Kings Cross Central Partnership Ltd.

Drawing Title
Facade Bay Study
 West Elevation - Loading Bay and KCS Parking

| Drawing Number | Revision |
|---------------------------|----------|
| KXC-T2-001-A-1503-P21-446 | 02 |

Scale @ A3 1:50 Scale @ A1 1:25 Revision Date 181219

YY MM DD



Elevation View

Section View

Plan Level 01 and 02

Plan Level 00

All Structure drawn in red for clarity.
 Refer to Structural Engineers drawings to confirm loadings.
 All details are shown indicatively to describe design intent.
 Detailed design will be developed with specialist contractor as part of a CDR package.

- 01 Steel post in steel post.
- 02 Reinforcement in concrete slab.
- 03 Steel channel in concrete slab.
- 04 Steel post in concrete slab.
- 05 Steel post in concrete slab.
- 06 Steel post in concrete slab.
- 07 Steel post in concrete slab.
- 08 Steel post in concrete slab.
- 09 Steel post in concrete slab.
- 10 Steel post in concrete slab.
- 11 Steel post in concrete slab.
- 12 Steel post in concrete slab.
- 13 Steel post in concrete slab.
- 14 Steel post in concrete slab.
- 15 Steel post in concrete slab.
- 16 Steel post in concrete slab.
- 17 Steel post in concrete slab.
- 18 Steel post in concrete slab.
- 19 Steel post in concrete slab.
- 20 Steel post in concrete slab.
- 21 Steel post in concrete slab.
- 22 Steel post in concrete slab.

Revisions
 01 Issued for Planning
 02 Issued for Planning

Notes
 To be read in conjunction with KXC-T2-001-A-1603-20-850
 and (20)Series plans, sections and elevations. See Specification
 To be read in conjunction with F+acade Consultants
 Refer to R+et information for cleaning & maintenance.
 Refer to S+tructural Engineer's information for loadings.
 Refer to S+ervices information for location and number.
 Metal fins to follow service road levels, 100mm above FFL.

Project
 Site T2 KXC
 Kings Cross Central Partnership Ltd.

Drawing Title
 Facade Elevation - Paint Room

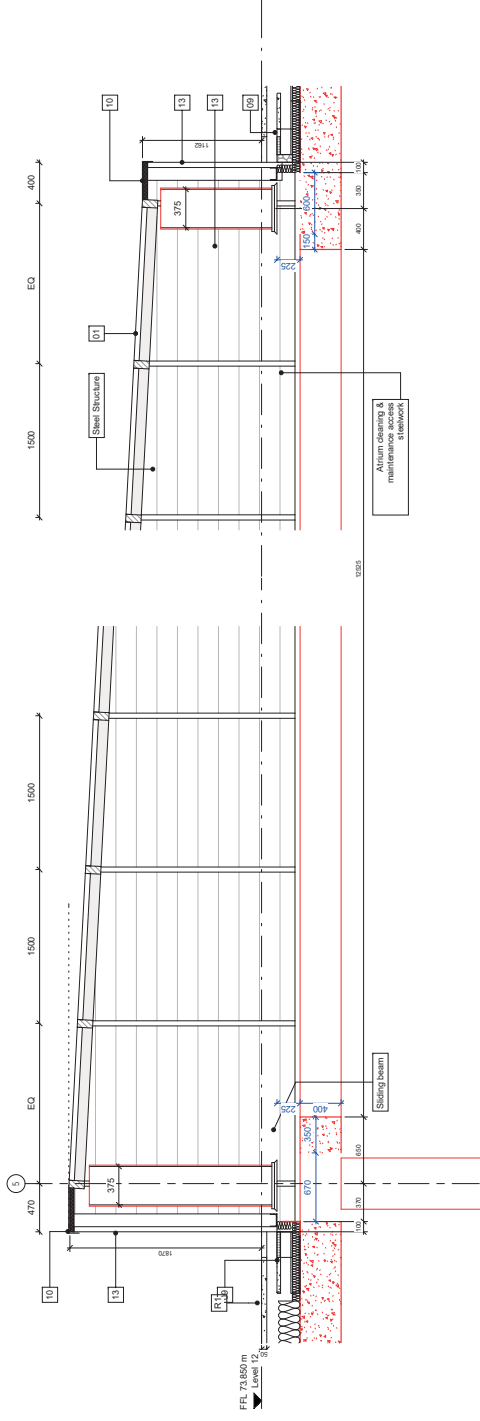
Project No. 1503

Revision Number
 KXC-T2-001-A-1603-P21-447

Scale @ A3 1:50
 Scale @ A1 1:25

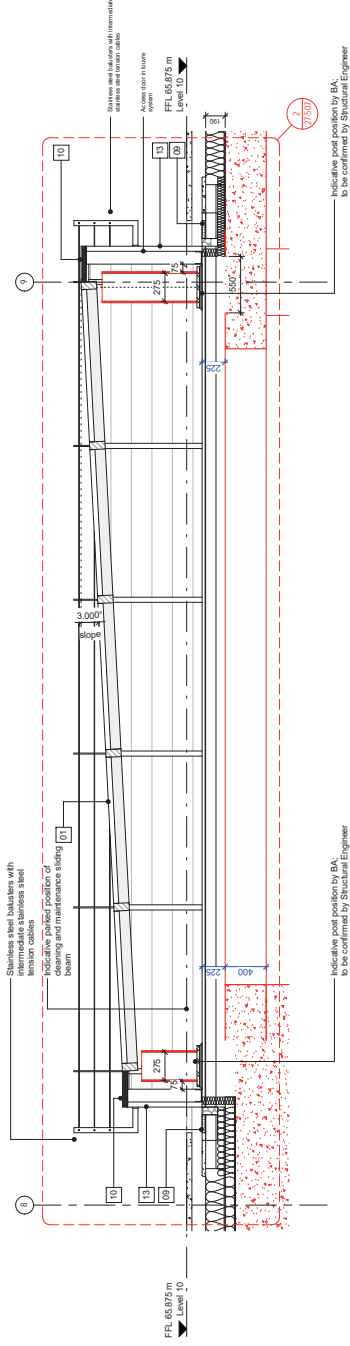
Revision Date
 18/12/19
 VY.HM.D.

BENNETTS ASSOCIATES
 1 Rawlstone Place, London EC1V 7NL
 T +44(0)207 5303300 www.bennettsassociates.com
 For more information visit www.bennettsassociates.com



Block S1 Section

1



Block S2 Section

2

NOTE: Drawing format revised

To be read in conjunction with KXC-T2-001-A-1503-20-860
 To be read in conjunction with the (2) Series drawings and
 companion plans, sections and elevations

To be read in conjunction with F facade Consultant's
 drawings
 Refer to Block S1 section for cleaning & maintenance,
 loadings and layouts
 Refer to Structural Engineer's information for loadings,
 dimensions and number
 of services penetrations and offsets

All Structure drawn in red for clarity
 Refer to Structural Engineer's drawings to confirm loadings
 All details are shown indicatively to describe design intent.
 Detailed fabric work to be developed with specialist contractor
 as part of a CDP Package

Revisions
 01 18/05/20 Issued for Planning
 02 18/12/19 Issued for Planning

By: CK
 KC
 BN

- 01: Steel structure
- 02: Stainless steel balustrade (RAL 7030) panel and frame & RALC details for
- 03: Balustrade (RAL 7030) panel and frame & RALC details for
- 04: Balustrade (RAL 7030) panel and frame & RALC details for
- 05: Balustrade (RAL 7030) panel and frame & RALC details for
- 06: Balustrade (RAL 7030) panel and frame & RALC details for
- 07: Balustrade (RAL 7030) panel and frame & RALC details for
- 08: Balustrade (RAL 7030) panel and frame & RALC details for
- 09: Balustrade (RAL 7030) panel and frame & RALC details for
- 10: Balustrade (RAL 7030) panel and frame & RALC details for
- 11: Balustrade (RAL 7030) panel and frame & RALC details for
- 12: Balustrade (RAL 7030) panel and frame & RALC details for
- 13: Balustrade (RAL 7030) panel and frame & RALC details for
- 14: Balustrade (RAL 7030) panel and frame & RALC details for
- 15: Balustrade (RAL 7030) panel and frame & RALC details for
- 16: Balustrade (RAL 7030) panel and frame & RALC details for
- 17: Balustrade (RAL 7030) panel and frame & RALC details for
- 18: Balustrade (RAL 7030) panel and frame & RALC details for
- 19: Balustrade (RAL 7030) panel and frame & RALC details for
- 20: Balustrade (RAL 7030) panel and frame & RALC details for
- 21: Balustrade (RAL 7030) panel and frame & RALC details for
- 22: Balustrade (RAL 7030) panel and frame & RALC details for
- 23: Balustrade (RAL 7030) panel and frame & RALC details for
- 24: Balustrade (RAL 7030) panel and frame & RALC details for
- 25: Balustrade (RAL 7030) panel and frame & RALC details for

BENNETTS ASSOCIATES

1 Bouverton Place, London EC1V 7NL
 T +44(0)207 5023000 • www.bennettsassociates.com
 E mail@bennettsassociates.com • info@bennettsassociates.com
 www.bennettsassociates.com

Project
Site T2 KXC
 Kings Cross Central Partnership Ltd.

Drawing Title
South Blocks - Cladding Type 7

Drawing Number
 KXC-T2-001-A-1503-F21-451

Revision
 02

Scale @ A1
 1 : 50

Scale @ A3
 1 : 25

Revision Date
 18/12/19

V01.00

Project No. 1503



KINGS CROSS

4 Stable Street
London
N1C 4AB
T +44 (0)20 3664 0200
www.kingscross.co.uk