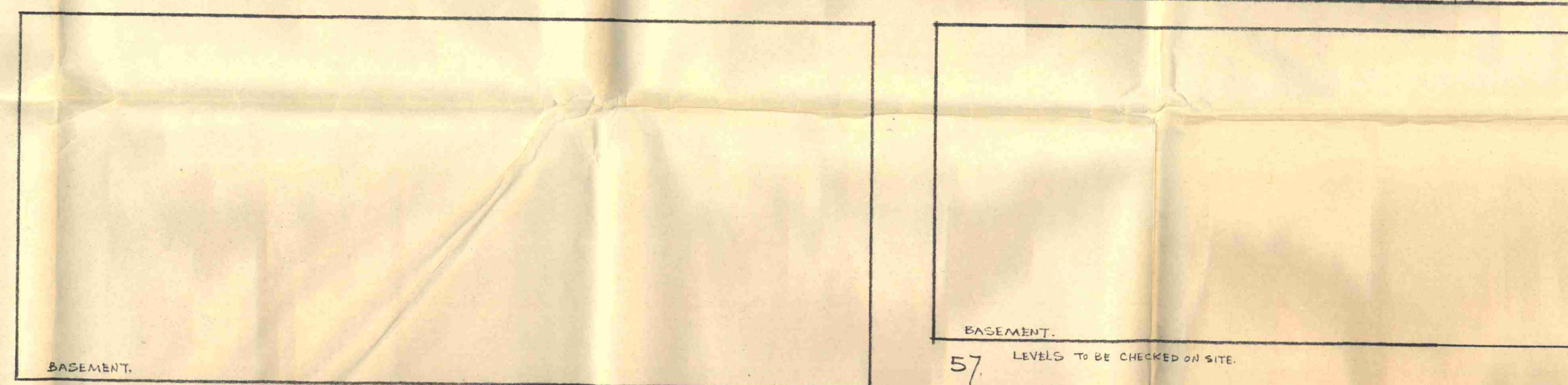
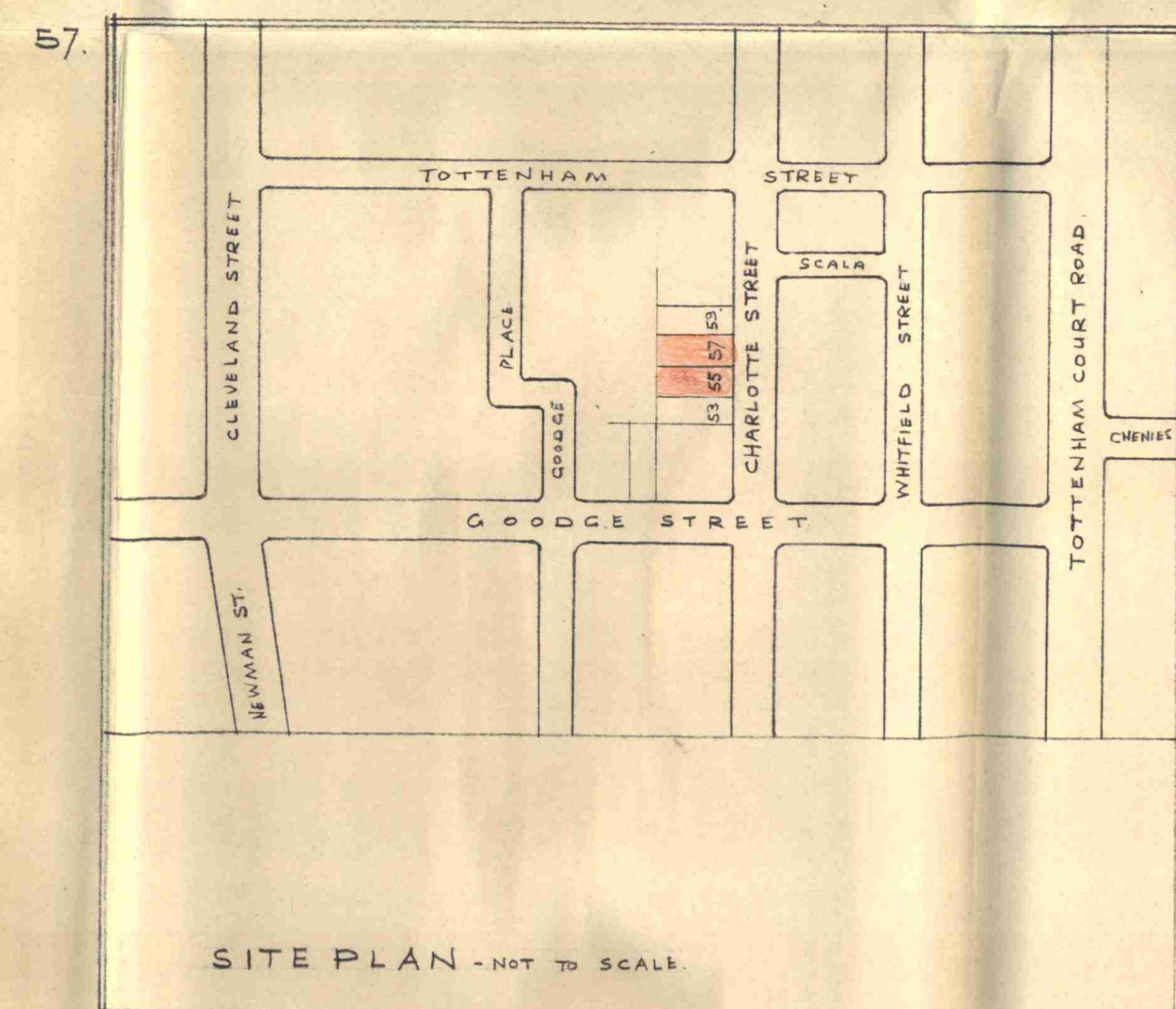
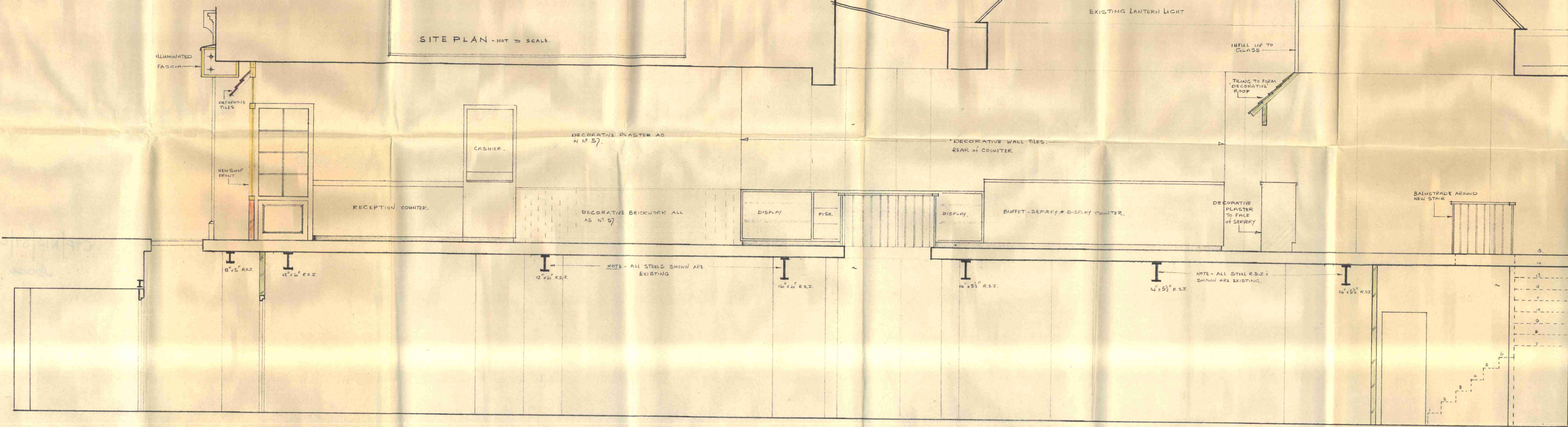
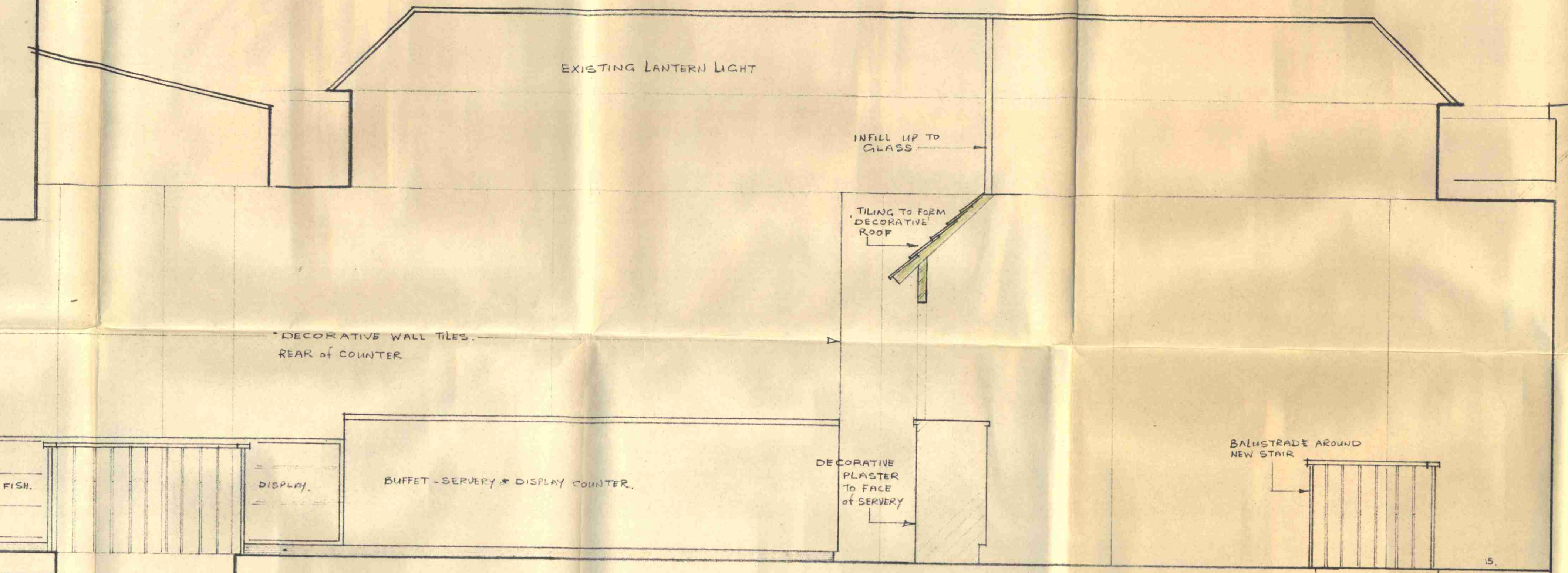


55. CHARLOTTE ST. ELEVATION



55 SECTION AT A-A.



SECTION AT B-B

LONDON BOROUGH OF CAMDEN
 PLANS APPROVED
 12 AUG 1970
 ON BEHALF OF THE COUNCIL

GTP/12/31/c/1985

MUSSELL BROS. (PADDDINGTON) LTD.
 413 HARROW ROAD, PADDDINGTON, W.10.
 TEL. LANSBROKE 2422 3-4-6
 DRAWN BY: KR
 CHECKED BY: 17.7.70
 DATE: 5536
 NO: 55-57, CHARLOTTE STREET.
 1/2 SCALE SECTIONS + FRONT ELEVATION OF SHOP.
 URG No. R. 2200