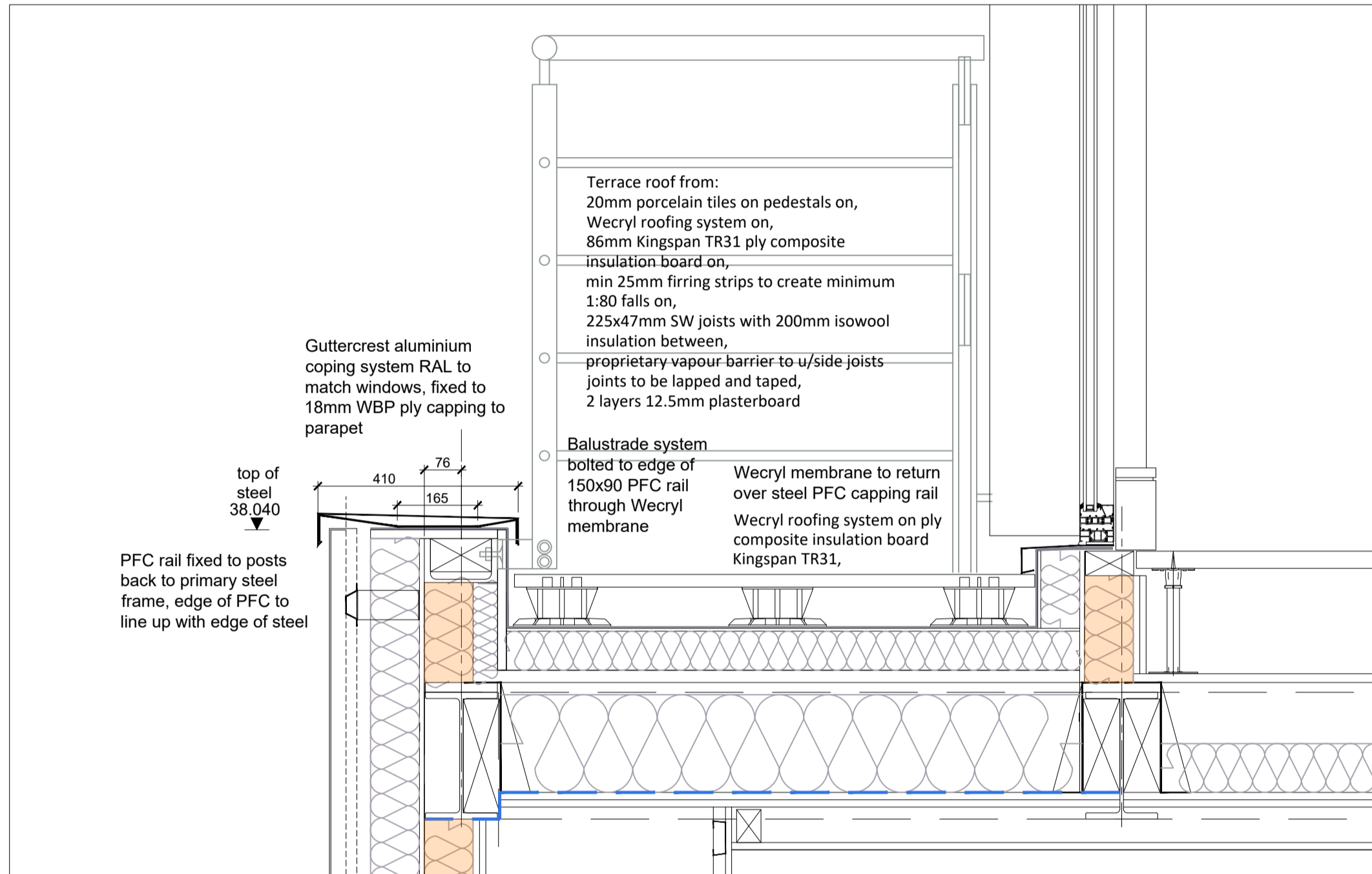
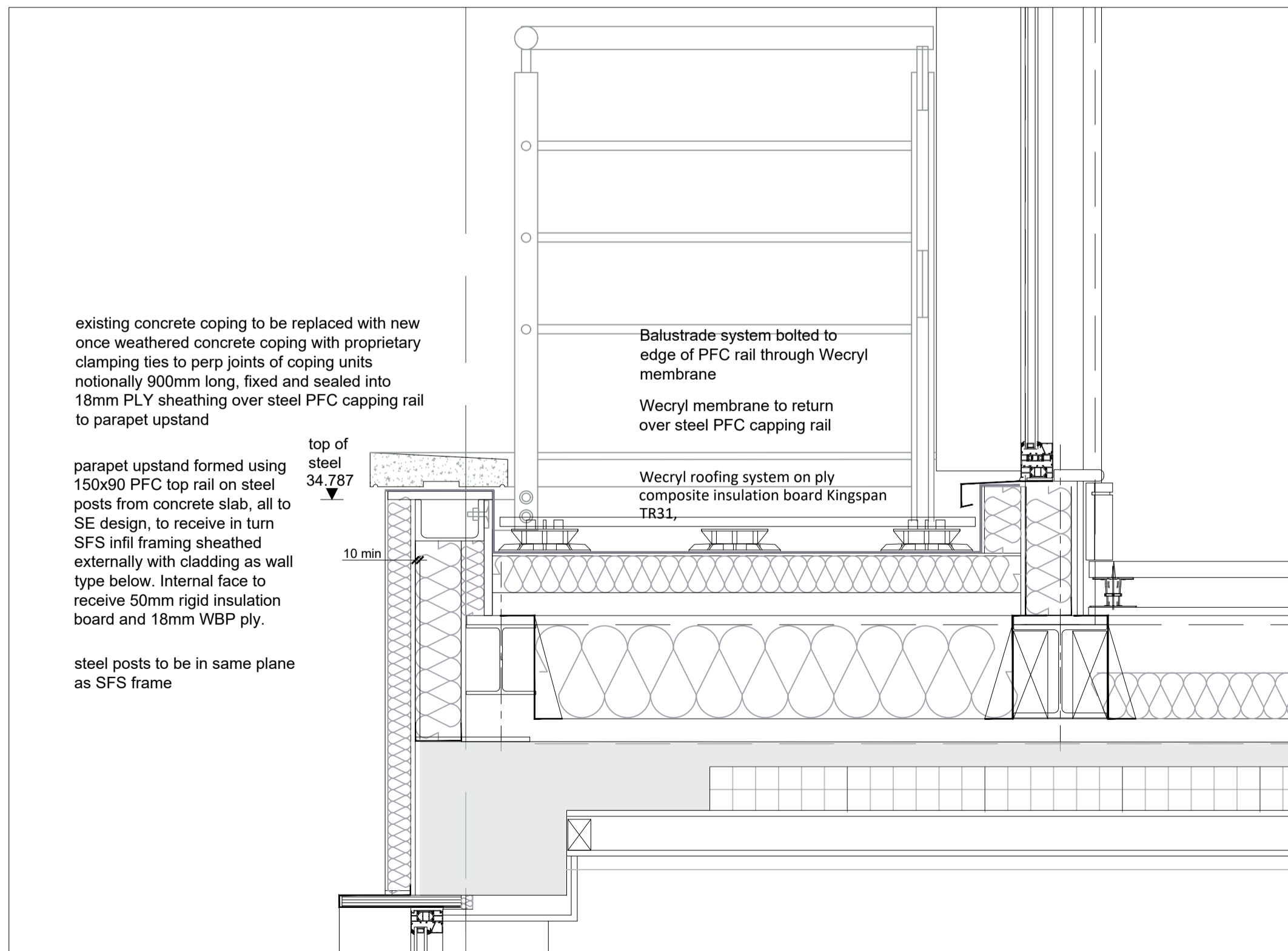


section through roof parapet - 1:10



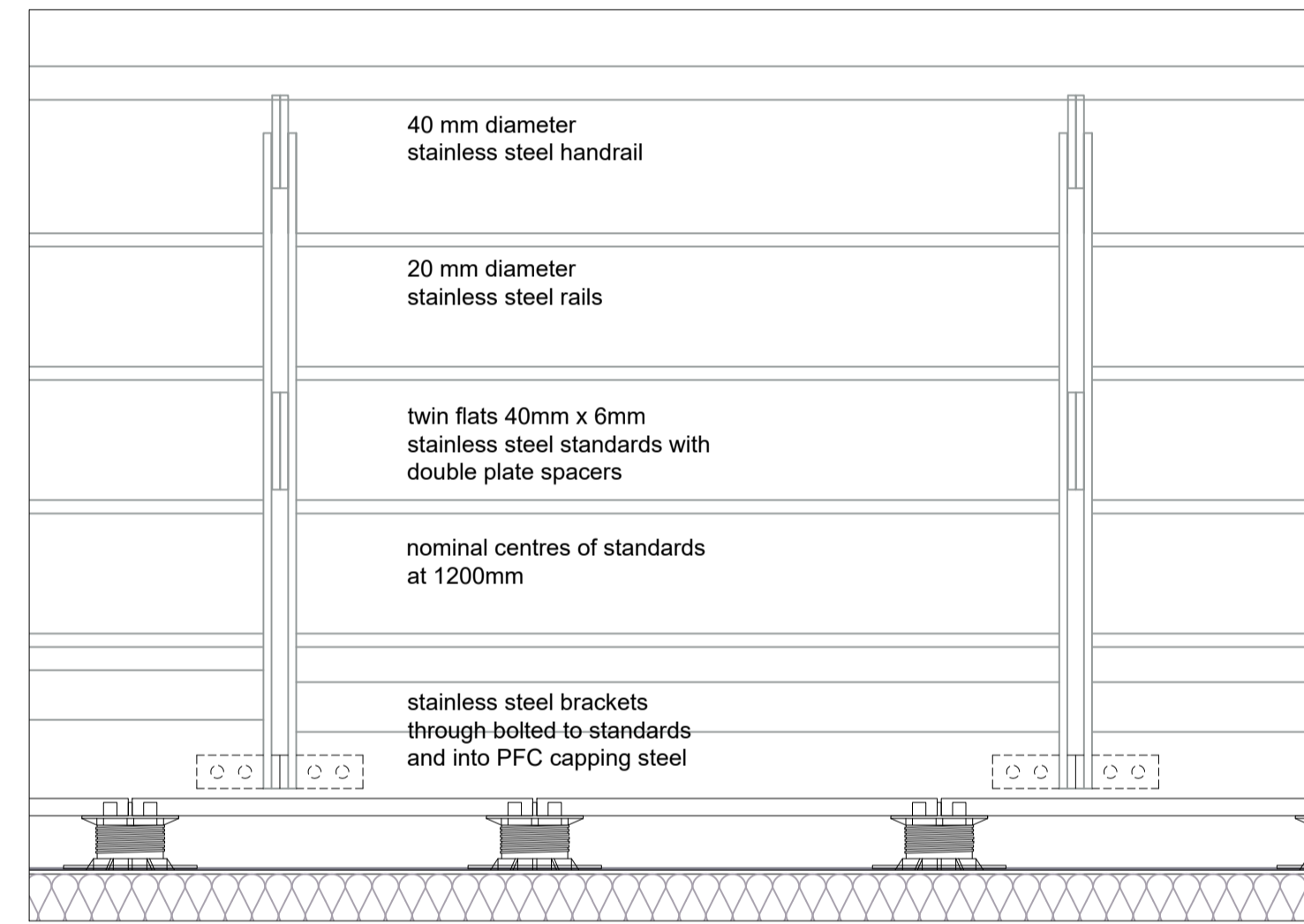
section through balustrade profile - 5th floor - 1:10



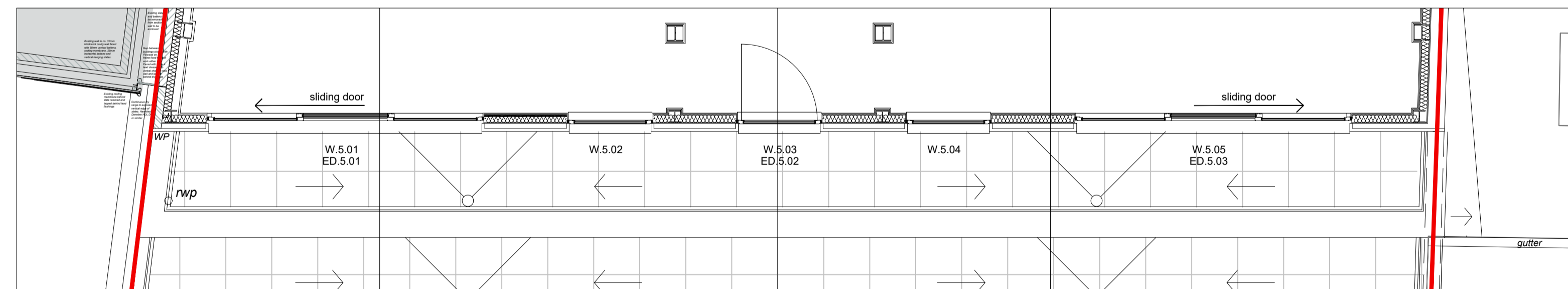
section through balustrade profile - 4th floor - 1:10



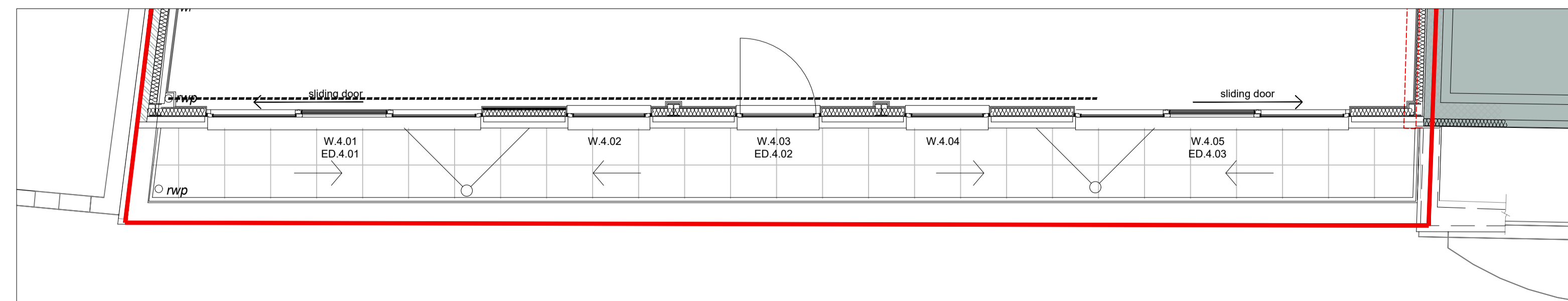
front elevation - 1:50



typical balustrade bay - 1:10



5th floor terrace to East front elevation onto Fulwood Place - 1:50



4th floor terrace to East front elevation onto Fulwood Place - 1:50

Revision	Description	Rev By	Date
C	amended to suit SE design		04.01.2019
B	updated to suit steel design		30.10.2018
A	First issue - tender		14.09.2018

gcp Chartered Architects
architecture project management sustainable design
Suite 10, Conum 2
Conum Office Park
Crown Way
Wansley
Bristol BS30 8FJ
E: 0117 9670288
mail@gcparch.co.uk
www.gcparch.co.uk

Project Title:
**Elizabeth House
4-7 Fulwood Place - London**

Drawing Title:
**Terrace Balustrade details
4th floor front elevation**

Drawn By: ms Date: Sept 2018
Checked By: tm Scale: 1:50 @ A1
Drawing No: 17008/425 Rev: C
Status: INFORMATION