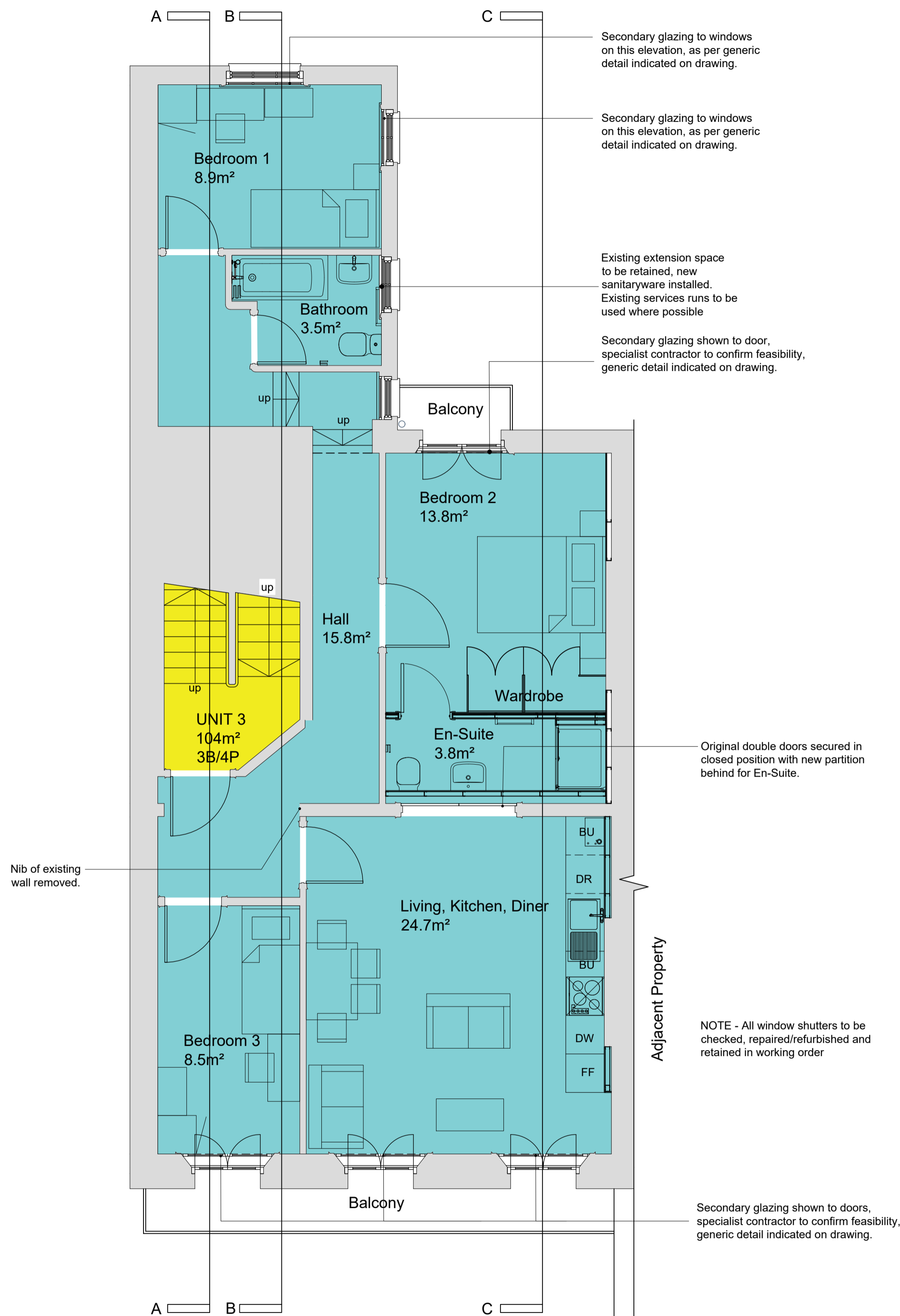
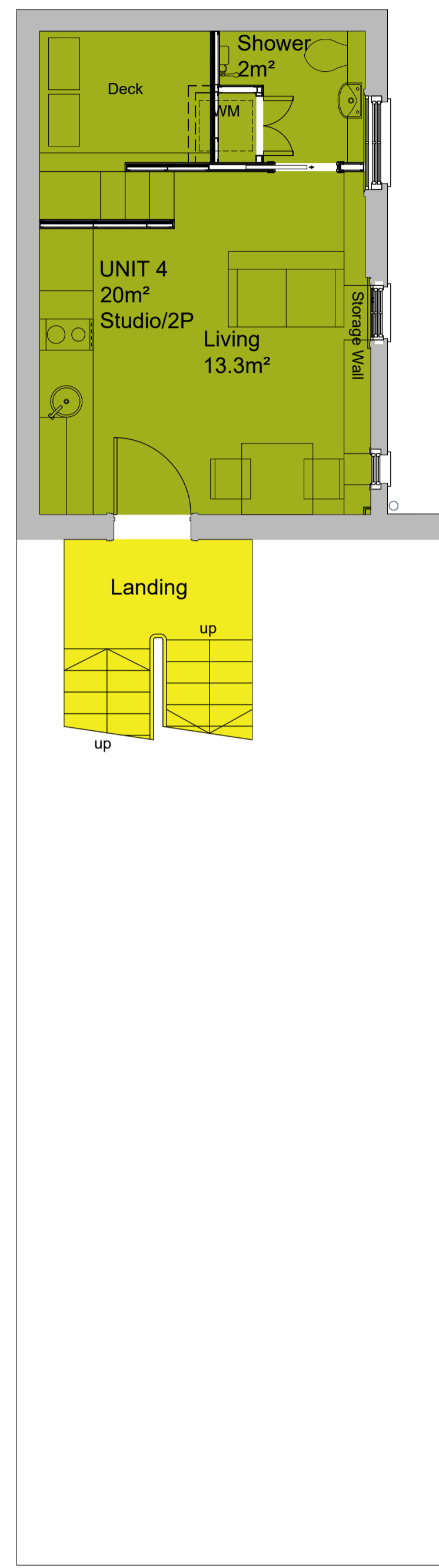


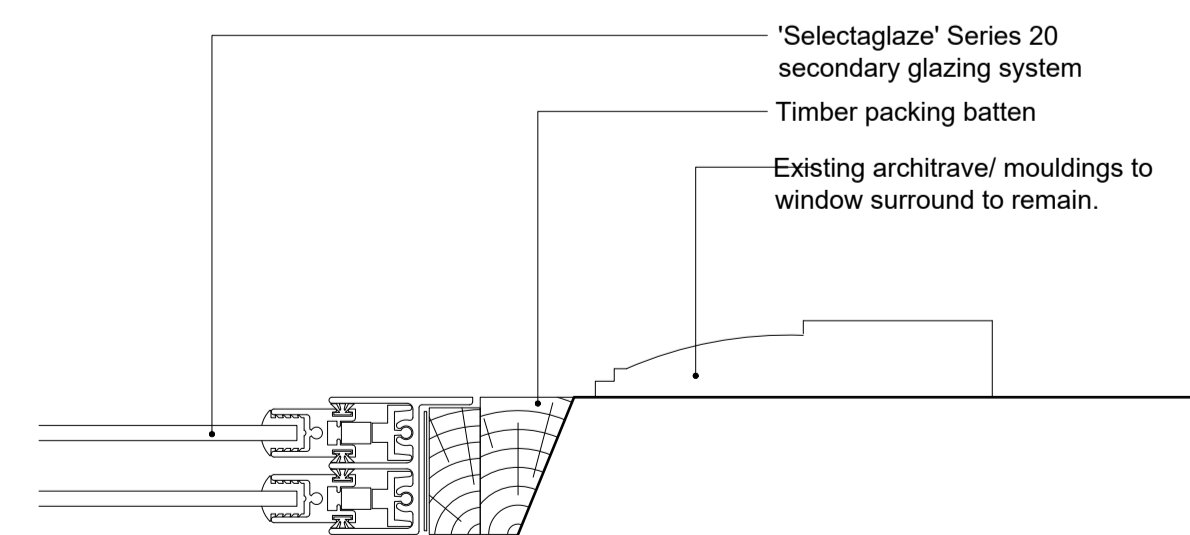
- Landlord / Circulation
- Unit 1 = 2 Bed / 4 Person Flat @ 95m²
- Unit 2 = 2 Bed / 4 Person Flat @ 77m²
- Unit 3 = 3 Bed / 4 Person Flat @ 104m²
- Unit 4 = 2 Person Studio @ 20m²
- Unit 5 = 2 Bed / 3 Person Flat @ 65m²
- Unit 6 = 2 Bed / 3 Person Flat @ 61m²
- Unit 7 = Existing Flat (not in scope)



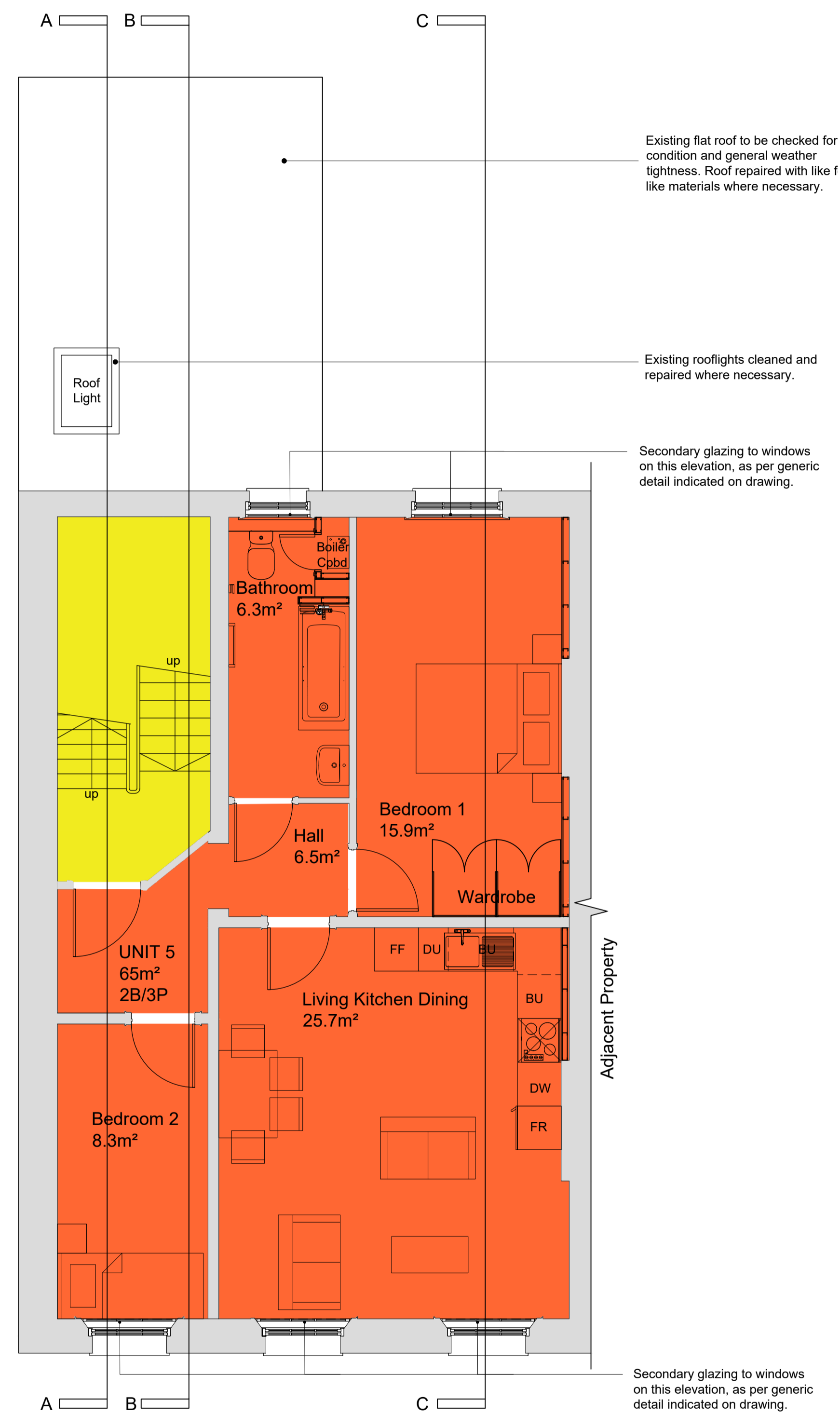
First Floor



1st Floor Mezzanine



Generic Secondary Glazing Jamb Detail Scale 1:2



Second Floor

P3	Revised to suit client comments	16/10/18	LS	LH	
P2	Revised to suit Conservation Officer comments	04/10/18	LH	LH	
P1	First Issue	07/06/18	LH	LH	
Rev	Description	Date	CHK	APR	
Project No:	811618	Scale @ A1:	As Indicated	Drawn By:	LH

Ingleton Wood Property and Construction Consultants
Issuing office: London
T: 020 7660 4400
www.ingletonwood.co.uk

Vision, form and function
Project:
1, Taviton Street Refurbishment
Euston
London
WC1H 0BT
Client:
University of London

Title:
Proposed 1st, 1st Mezzanine
Second Floor Plans
Drawing Number:
TAV-IW-XX-XX-DR-A-2302
Status: S2 Purpose of Issue: Information Revision: P3