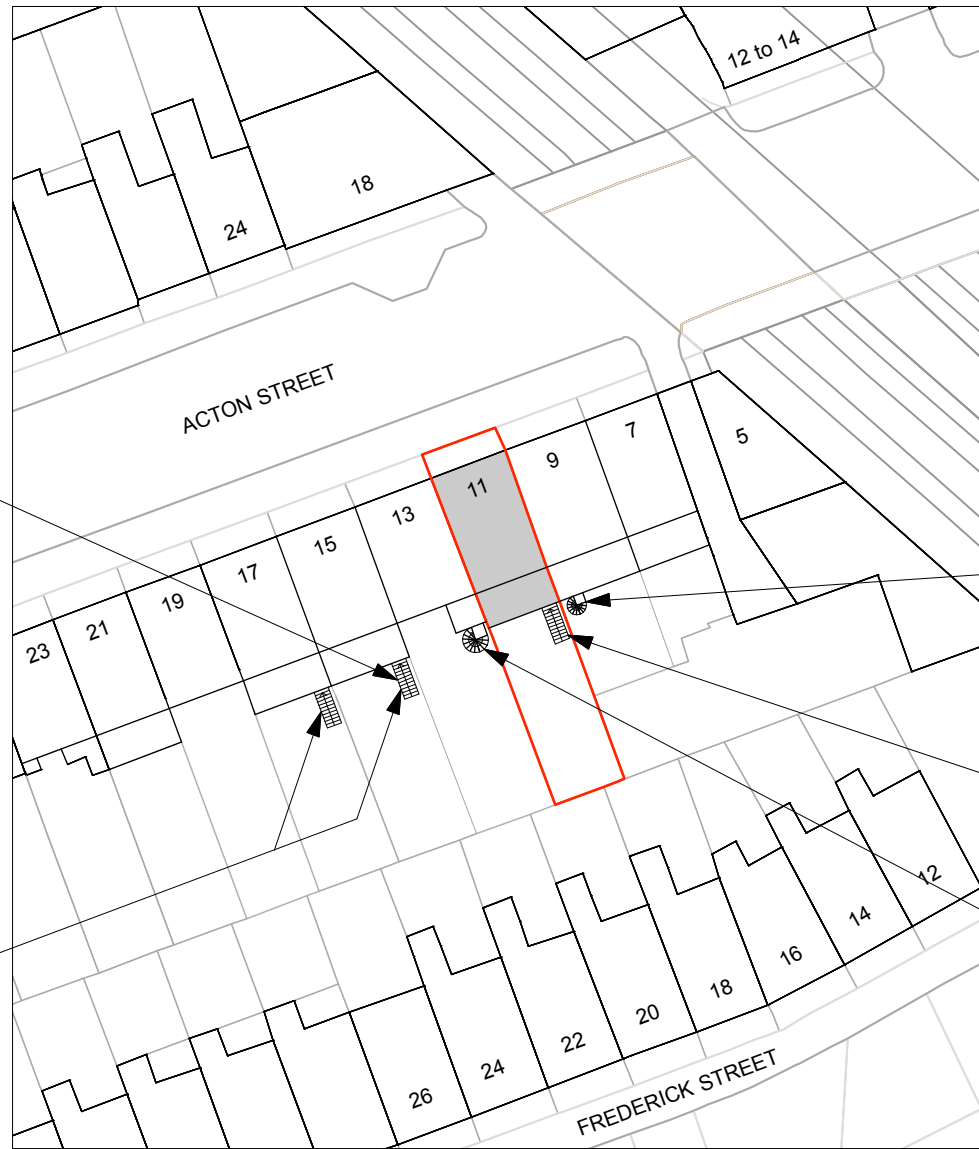




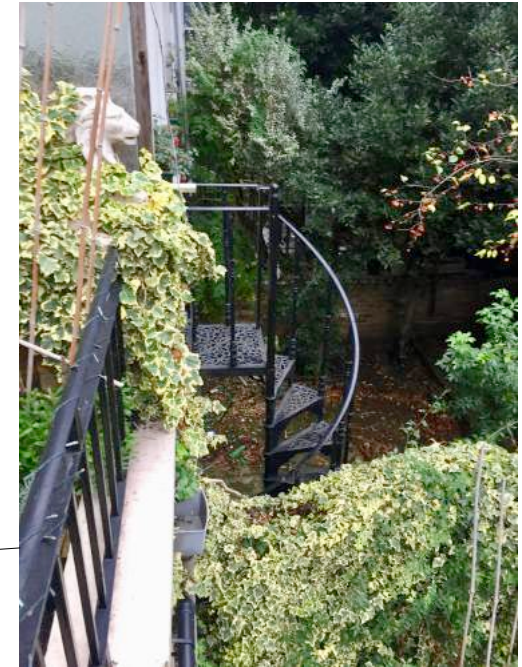
No. 15: Black metal access stair from rear terrace to garden (view from garden of No. 11)



No. 15 & 17: Black metal access stairs from rear terraces to gardens (view from garden of No. 11)

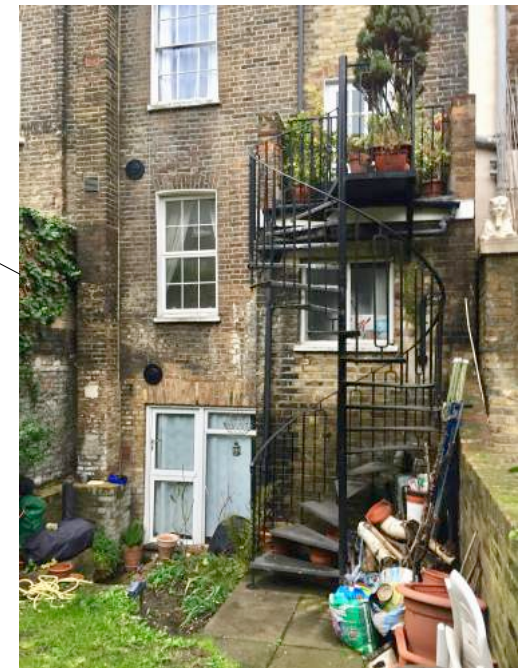


BLOCK PLAN
1:500



No. 9: Existing black metal access stair from rear terrace to garden

Proposed black steel access stair from terrace to garden level



No. 13: Existing black metal access stair from rear terrace to garden

Rev.	Date	Description
P1	23.01.19	For Planning

MARTIN WALTON
Architect & Designer

+44 (0)7739 181270
me@martin-walton.com
www.martin-walton.com

Project:	11A Acton Street, London WC1X 9LX	
Client:	Karen Fan	
Drawing:	Block Plan	
Drawing No:	MW-1140-102	Rev: P1
Scale/Size:	1:500 @ A4	
Issued For:	PLANNING	