

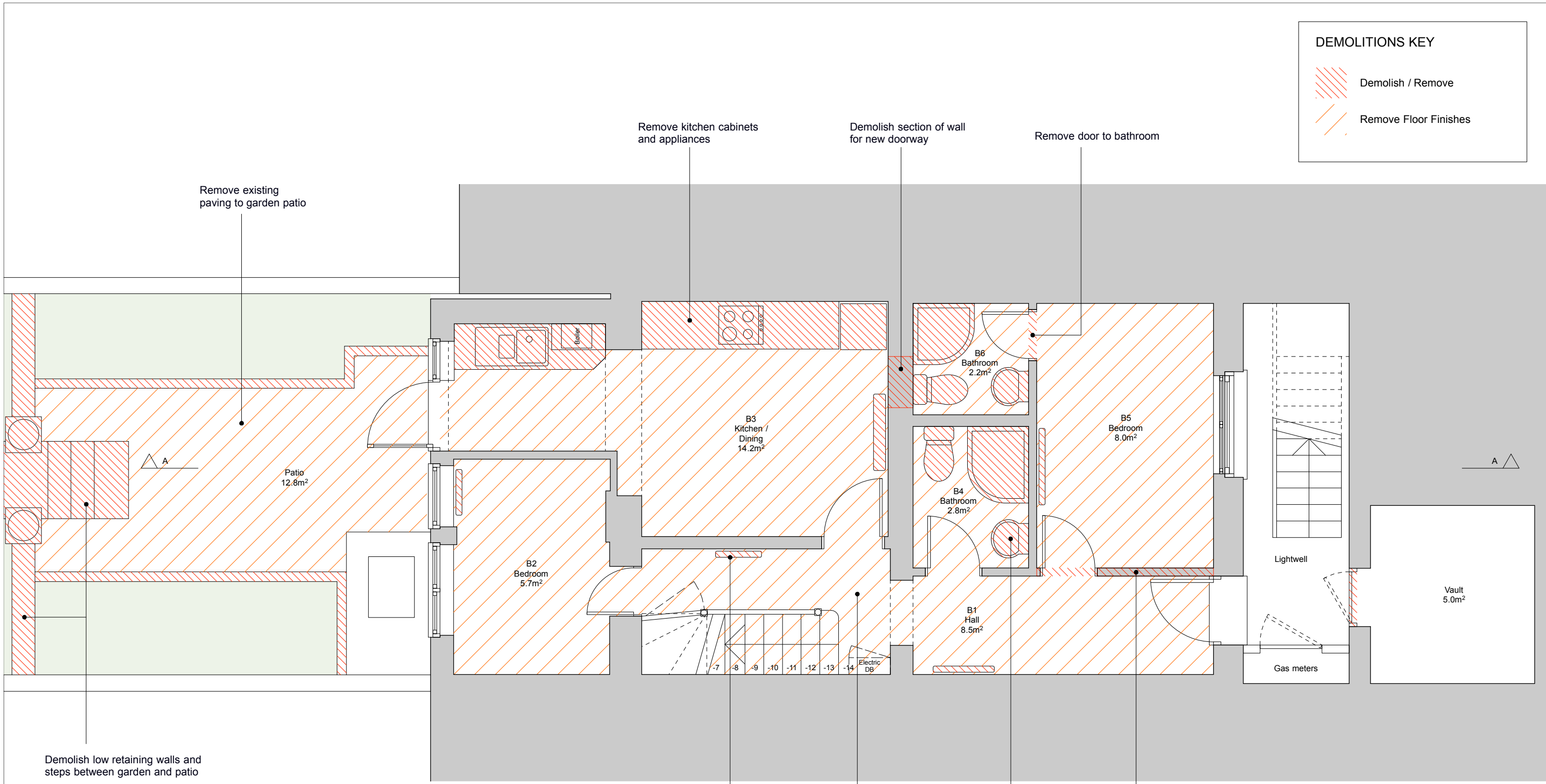


**DEMOLITIONS KEY**

-  Demolish / Remove
-  Remove Floor Finishes



**EXISTING BASEMENT**

- Remove existing radiators
- Remove floor finishes throughout basement
- Remove existing sanitaryware and fittings from bathrooms
- Demolish studwork wall and door as indicated

Demolish low retaining walls and steps between garden and patio

Rev.	Date	Description
P1	23.01.19	For Planning





**MARTIN WALTON**  
Architect & Designer

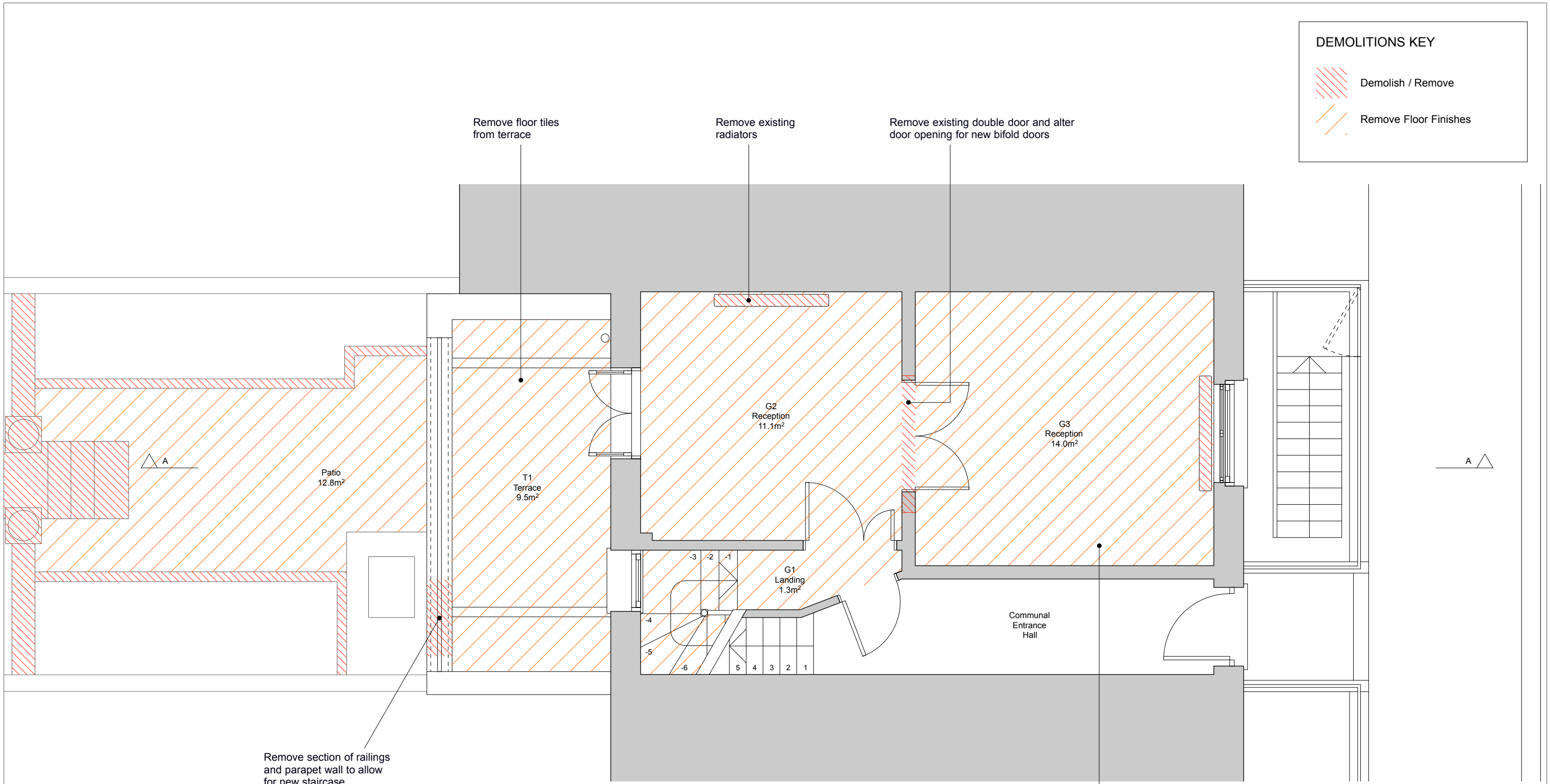
+44 (0)7739 181270  
me@martin-walton.com  
www.martin-walton.com

<b>Project:</b>	11a Acton Street, London WC1X 9LX
<b>Client:</b>	Karen Fan
<b>Drawing:</b>	Existing Basement Plan
<b>Drawing No:</b>	MW-1140-110
<b>Scale/Size:</b>	1:50 @ A3
<b>Issued For:</b>	PLANNING

Rev: P1

**DEMOLITIONS KEY**

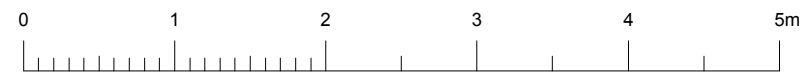
-  Demolish / Remove
-  Remove Floor Finishes



**EXISTING GROUND FLOOR**

Remove floor finishes throughout ground floor

Rev.	Date	Description
P1	23.01.19	For Planning



**MARTIN WALTON**  
 Architect & Designer  
 +44 (0)7739 181270  
 me@martin-walton.com  
 www.martin-walton.com

<b>Project:</b>	11a Acton Street, London WC1X 9LX
<b>Client:</b>	Karen Fan
<b>Drawing:</b>	Existing Ground Floor Plan
<b>Drawing No:</b>	MW-1140-111
<b>Scale/Size:</b>	1:50 @ A3
<b>Issued For:</b>	PLANNING
<b>Rev:</b>	P1