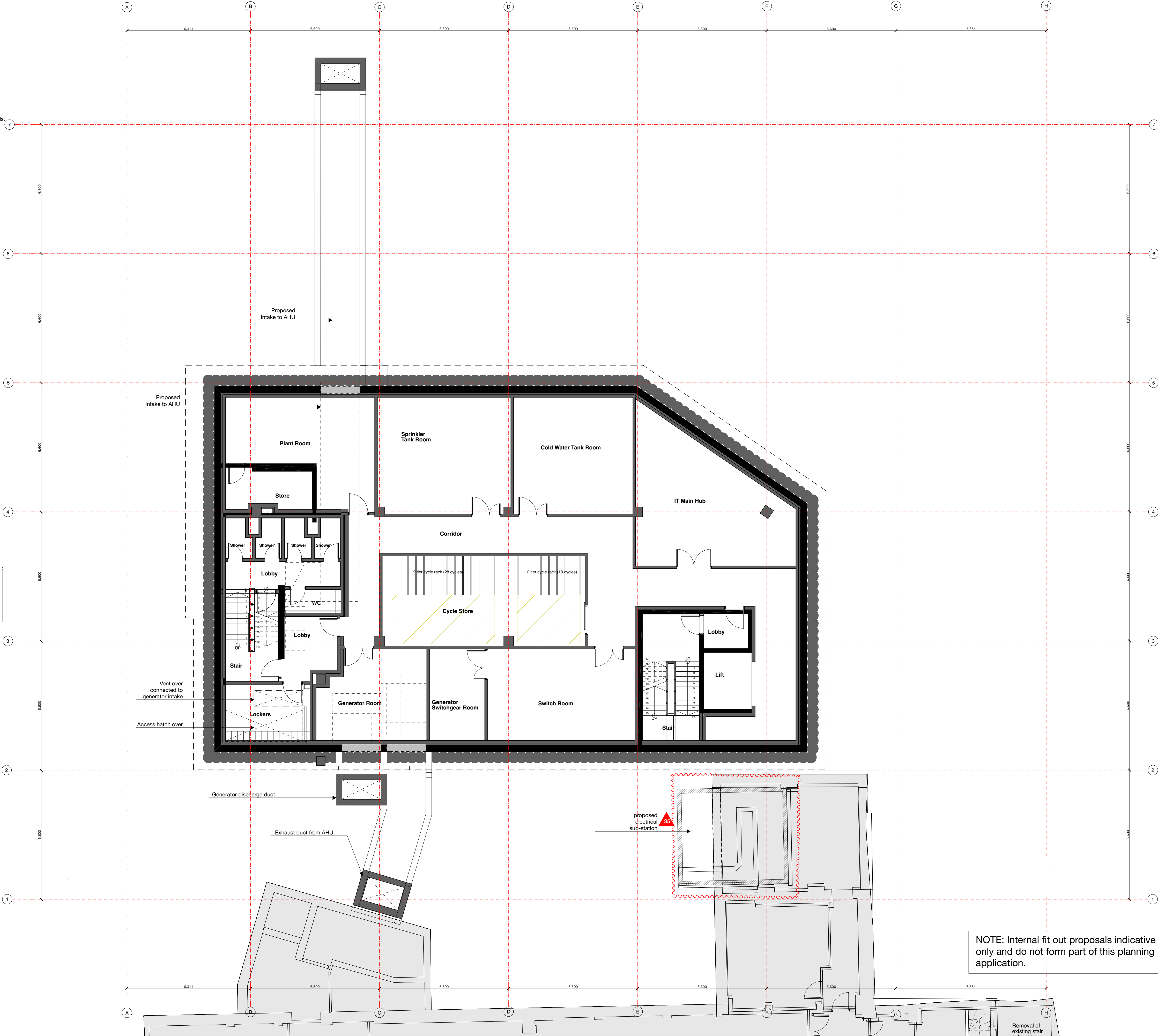


LEGEND (ALL CHANGES TO ALL LEVELS)

- 01. Stair 2 omitted, and glazed entrance enclosure enlarged
- 02. Window added
- 03. New steps to base of external spiral stair
- 04. Stair 3 roof and gable end arrangement revised.
- 05. Level 3 accommodation mansarded
- 06. Roof light size, height and position adjusted, and smoke vents added.
- 07. Louvres omitted.
- 08. Roof light size, height and position adjusted.
- 09. External ramp adjusted, and railings added.
- 10. West stair core glazing fenestration adjusted to suit amended stair landing levels.
- 11. External paving levels in courtyard raised to achieve required paving falls.
- 12. Low brick plinth added to base of external walls to TP2.
- 13. Brick plinth added to base of existing buildings within courtyard.
- 14. New steps and landing outside room G1.
- 15. Bin store enlarged and repositioned.
- 16. Gallery passageway to TP2: finishes revised.
- 17. Gallery passageway: entrance gates design revised.
- 18. Window on north elevation of TP2 reduced in length.
- 19. Revised turn-table size and position
- 20. Entrance ramp gradient and levels adjusted.
- 21. External levels adjusted
- 22. TP1 west door ramp omitted
- 23. Fall restraint added
- 24. Gates removed
- 25. Maintenance access door added
- 26. Parapet revised
- 27. Roof/wall shape adjusted
- 28. TP1 reception relocated
- 29. Revised door design
- 30. Modifications to windows, doors and facades facing into courtyard.
- 31. Gate details revised
- 32. Revised proposal for bike storage replacing existing bike racks in Dairy added.
- 33. Gate retained and modified
- 34. Bike canopy detail revised (typical condition highlighted)
- 35. Sub-station & LV switch-room revised, including external doors
- 36. Steps adjusted
- 37. Cladding changed to brass finish
- 38. Wall mounted planters revised (typical condition highlighted)
- 39. Steel posts added to boundary wall (typical condition highlighted)
- 40. Height of glazed entrance roof increased to suit required pitch.
- 41. Glazed entrance roof and canopy revised
- 42. New roof guarding to existing flat roof
- 43. Screening fins and cladding added
- 44. Louvres added
- 45. Ramp omitted
- 46. Door removed and infilled
- 47. Access hatch adjusted.
- 48. Depth of green/blue roof build-up adjusted.
- 49. Blue roof incorporated into green roof and gravel margins added.
- 50. Cladding build-up adjusted
- 51. Orientation of brass seams adjusted
- 52. Roof gutters revised.
- 53. Means of escape revisited and exit door added to TP1
- 54. Spiral staircase landings added at each floor
- 55. Door modified
- 56. Basement louvers to external metal staircase landings
- 57. Revised proposal for mean of escape in TP1
- 58. Revised proposal for window and door
- 59. Revised proposal for door to be left as current
- 60. Gate to be removed
- 61. Capping width adjusted and roof planters shown indicatively.
- 62. Door to be replaced
- 63. Revised proposal for the entrance
- 64. Gates and Entrance door in TP1 to be replaced
- 65. Existing stair to be demolished
- 67. Existing window and door to be replaced
- 68. New reconfiguration for new spiral stair and WC
- 69. Staircase partially demolished
- 70. Level adjusted
- 71. Lift pit adjusted
- 72. Level updated
- 73. Red line extended to include South Crescent Mews
- 74. Red line extended to include new ramp and frontage
- 75. Ladder added
- 76. Works to Mews paving/kerbs added
- 77. Minor adjustment to ridge, and eaves line, (not affecting ridge level noted on consented drawings).



NOTE: Internal fit out proposals indicative only and do not form part of this planning application.