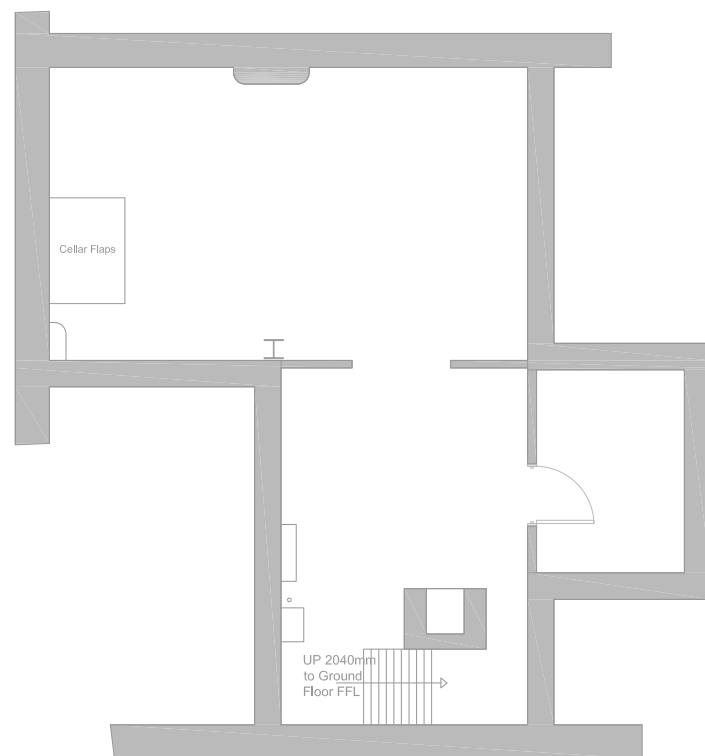


This detailed mechanical layout of the kitchen area includes the following components and annotations:

- Equipment and Rooms:** MOP AREA, HOIST, MAIN, DRY STORE, PREP, WALK IN CHILLER, CUSTOMERS WCs, STAFF WCs, STAFF LOCKERS, and a ROOF unit.
- Supply and Return Airflows:**
 - Red lines indicate supply airflows, including a $\varnothing 200$ supply from above, a $\varnothing 200$ supply from above to below, a $\varnothing 100$ supply from above, and a $\varnothing 150$ supply to the second floor.
 - Blue lines indicate return airflows, including a $\varnothing 200$ return from the kitchen extract and a $\varnothing 150$ return from the staff lockers.
- Extraction and Filtration:** Kitchen extract fan, Kitchen extract attenuator, Pre/UV/Bag/Carbon filters, and 4 no. kitchen extract spigots from below.
- Other Features:** 1 no. ESP24V, Kitchen extract fan 600 x 600, Kitchen extract attenuator, and a Supply AHU (Air Handling Unit) connected to the ROOF.
- Structural and Other Elements:** Cassettes AC unit, POTATO CUT & RINSE, DRY WASH & DRY, and a STACKE unit.

The diagram shows a power supply unit with the following components and connections:

- AC Input:** Labeled "AC 230V".
- AC Condensers:** Three capacitors labeled "3 no. AC condensers".
- Rectifier:** A bridge rectifier labeled "A".
- Filtering:** A large electrolytic capacitor labeled "10000µF 250V".
- Regulation:** A voltage regulator labeled "7805".
- Output:** Labeled "5V".
- Other Components:** A "100k" resistor, a "100nF" capacitor, and a "Supply attenuator".
- Grounding:** A "GND" connection point.
- Notes:**
 - "1 no. catering condenser (by others)" points to the 10000µF capacitor.
 - "Supply attenuator" points to the 100k resistor.



Overdoor heater

Ø100 toilet extract to above

Ø200 supply from above

6 no. supply spigots from above

4 no. kitchen extract spigots to above

Ducted AC unit

Ø200 supply from above

HOIST

BEER COOLER

3FT GRIDDLE

4FT GRIDDLE

FRESH FRY

3 VAT FRYER

KITCHEN

SANDWICH WRAP TABLE

DRESSING TABLE

MILKSHAKE

SBD

DINING

GROUND FLOOR HEATING = 51

TOTAL T = 51

AC Unit

Ø400

PICK-UP

BEVERAGE AREA

RESTROOMS

ACCESSIBLE WC (U4)

CO₂

CO₂

WIP AREA

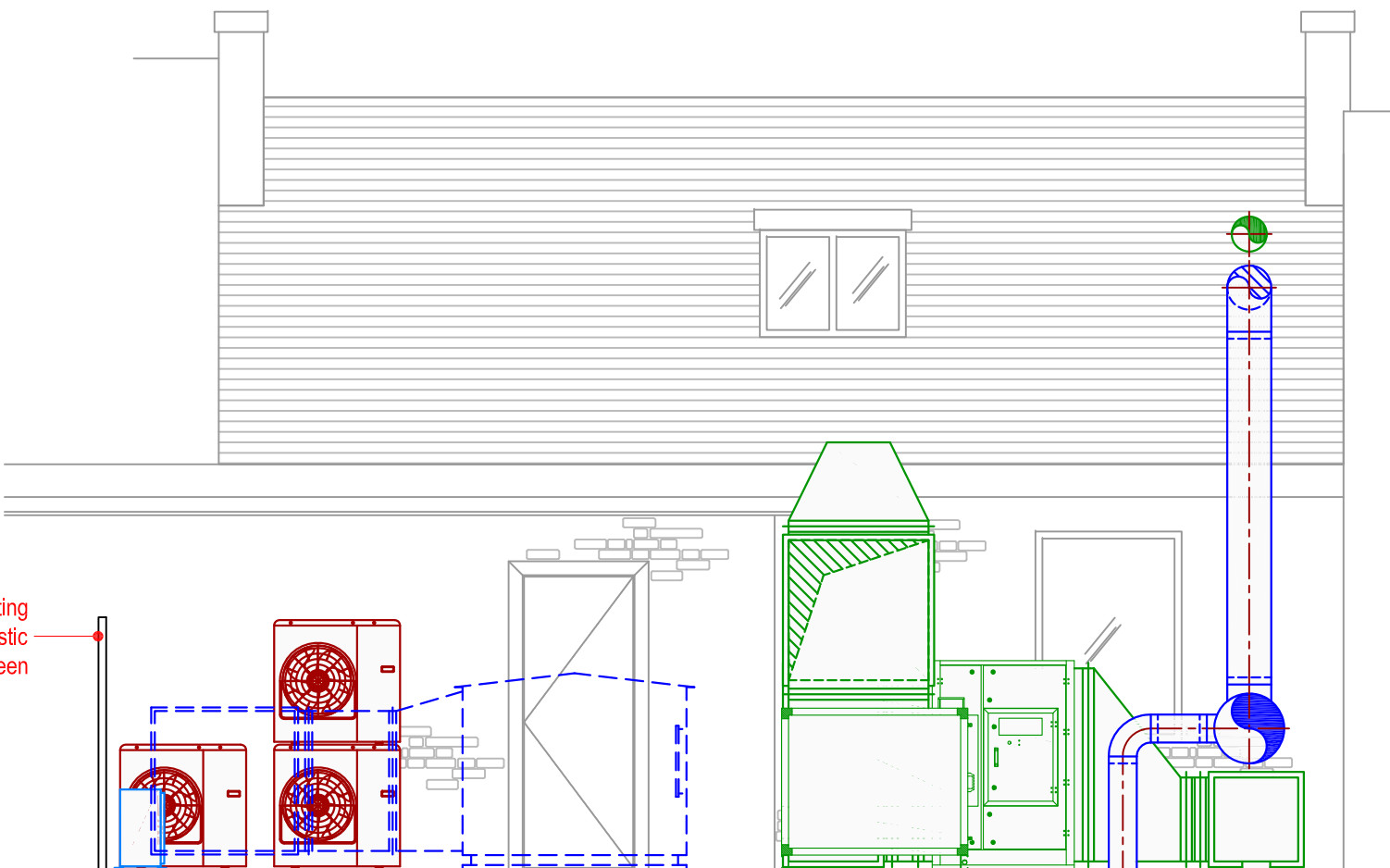
C	22-01-19	RL	Amendments to ducts.
B	21-01-19	RL	Amendments to plant.
A	12-12-18	RL	Amendments to plant.

32 Parkway
Camden Town
London
NW1 7AH

Ventilation Layout Basement, Ground, First & Second Floor

Copyright of this drawing resides
with Chapman Ventilation Limited ©





No.	Date	Rev. By	Revision Description
-----	------	------------	----------------------

32 Parkway
Camden Town
London
NW1 7AH

Ventilation Layout Roof Elevation A - A

C

Date: 05-12-18

chapman
ventilation

Copyright of this drawing resides
with Chapman Ventilation Limited ©

