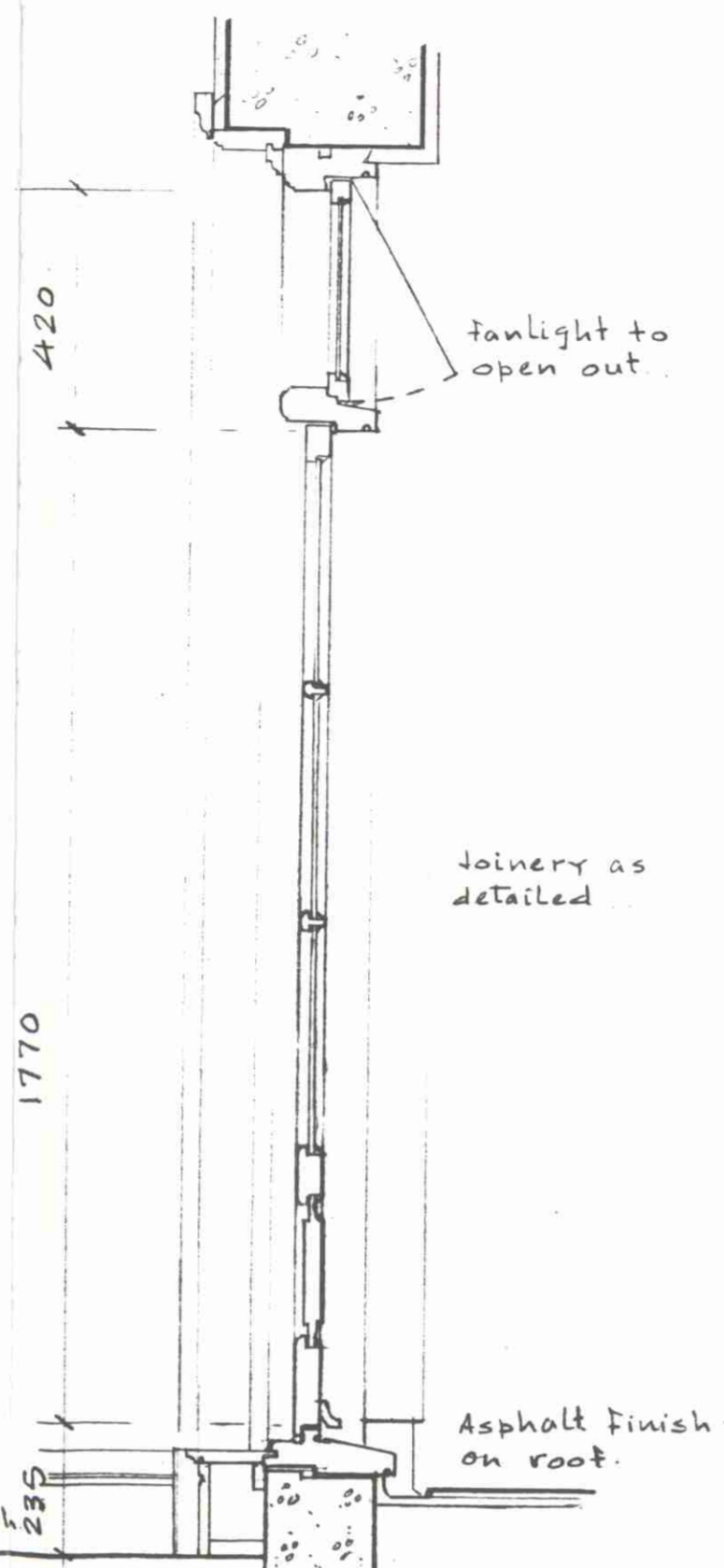
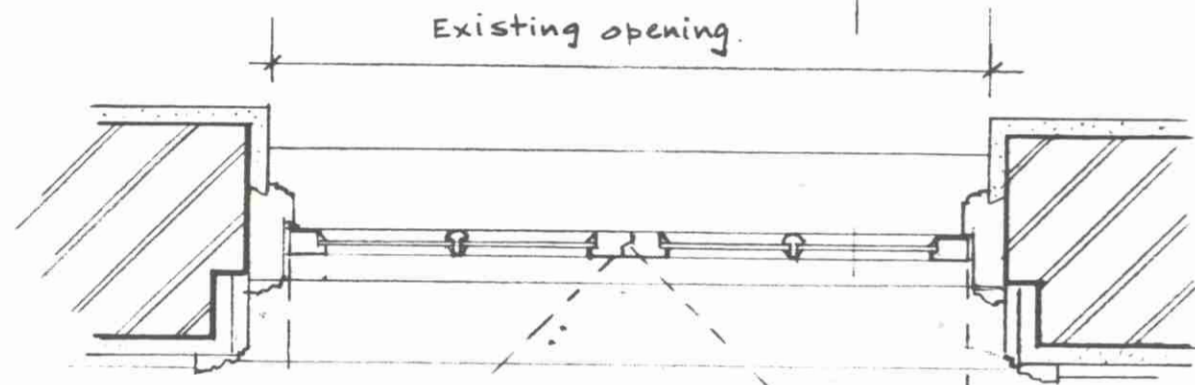


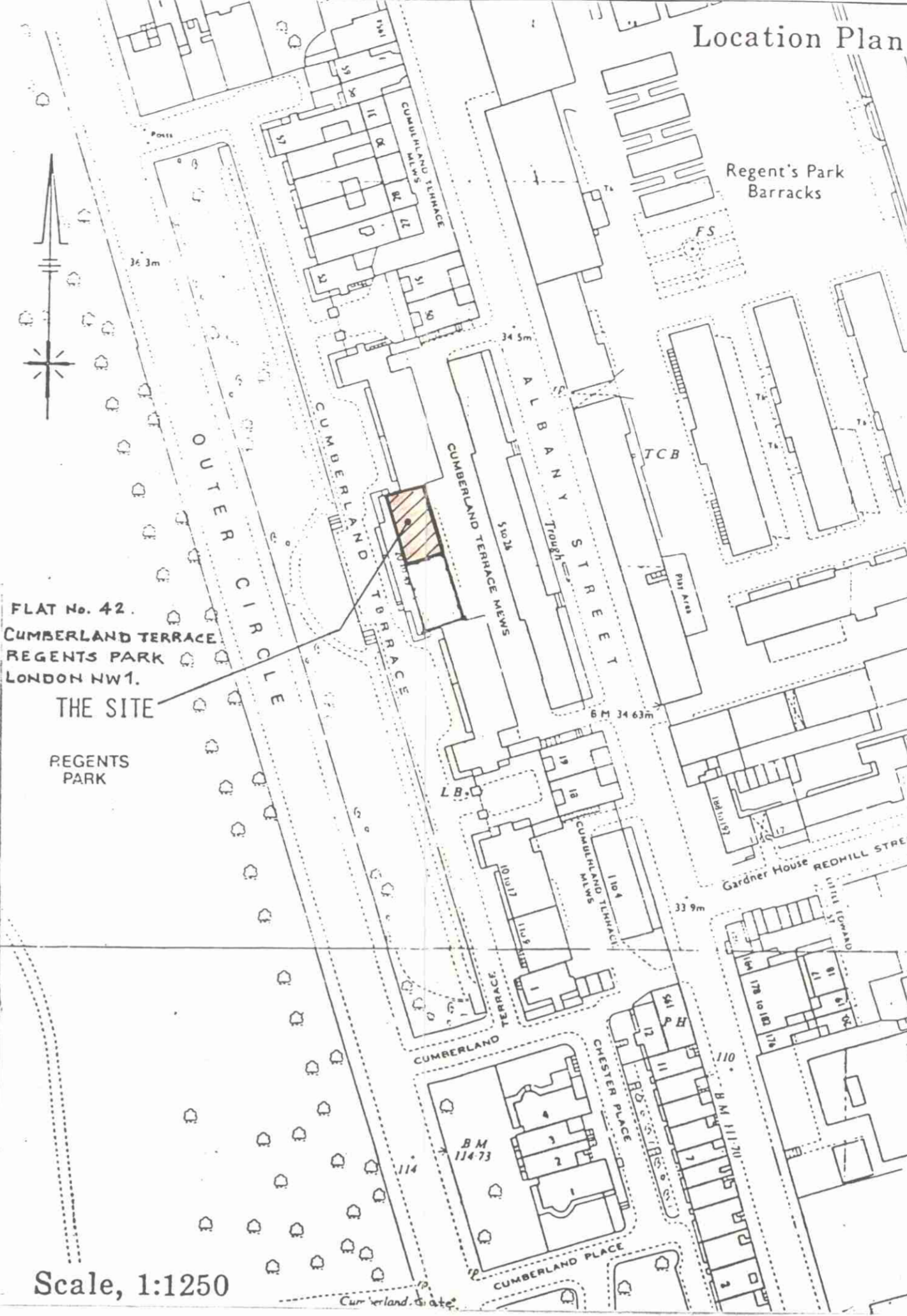
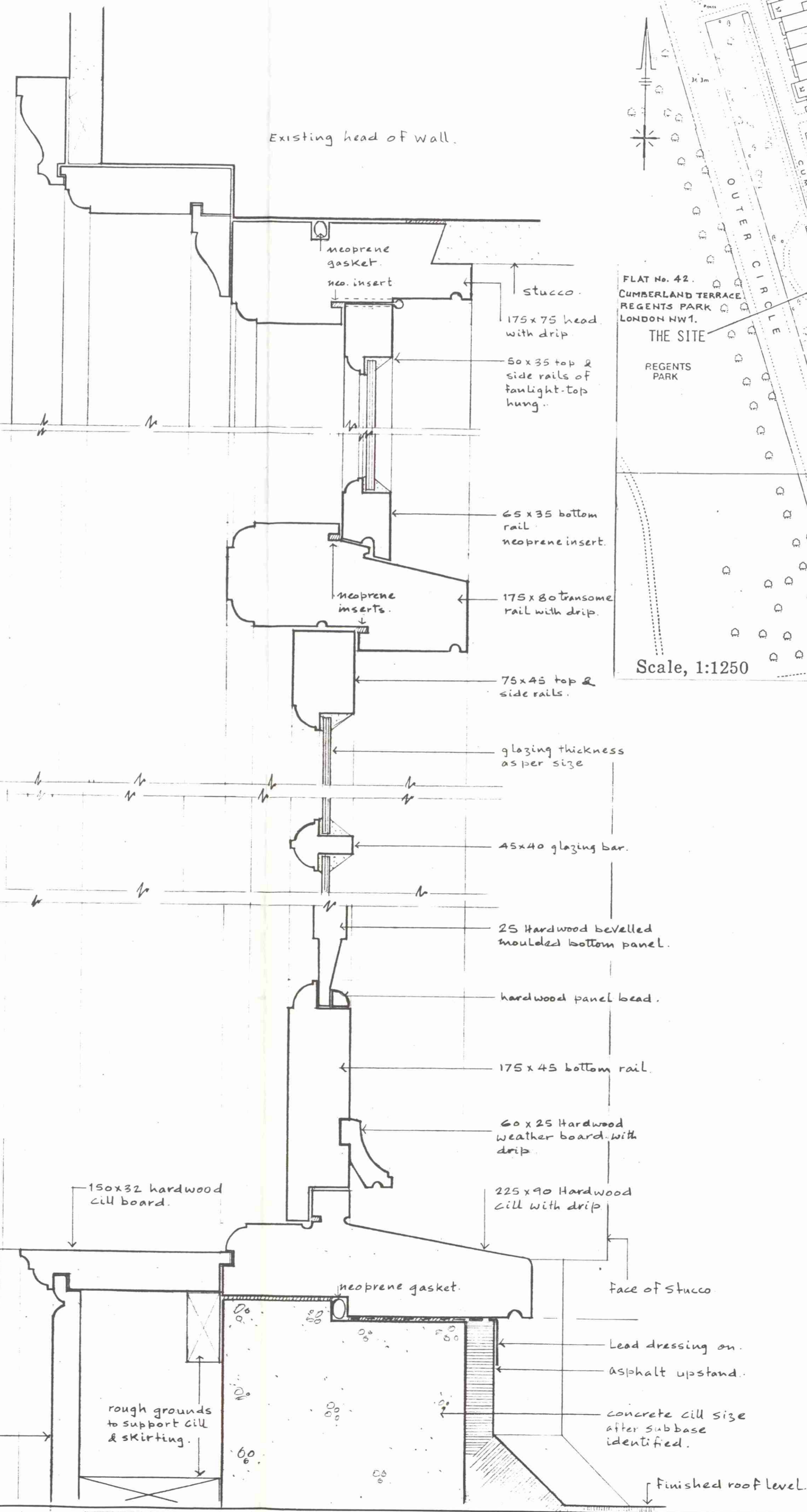
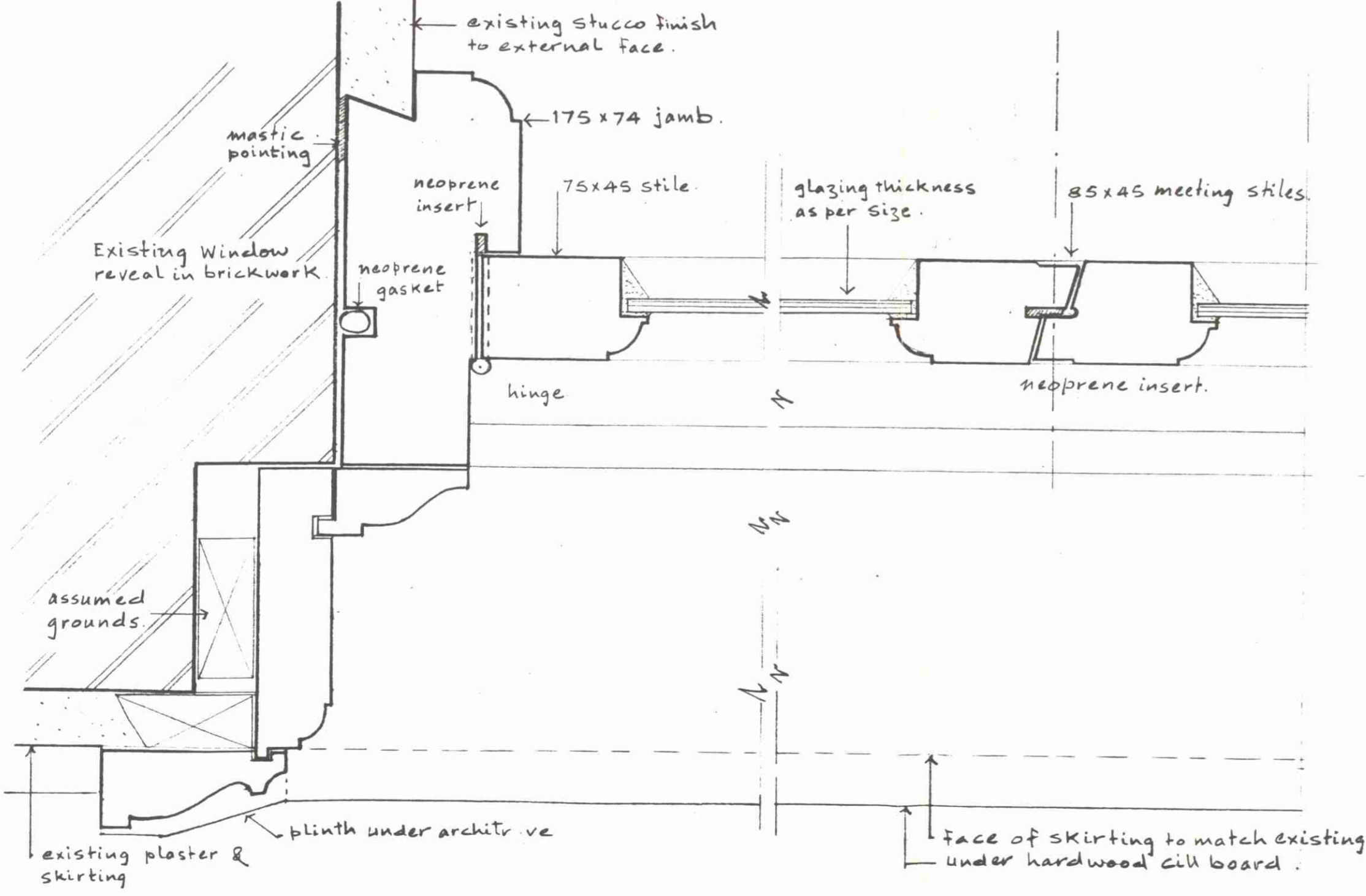
ELEVATION



SECTION a-a



PLAN



Scale, 1:1250

NOTES

All timber to be softwood except where indicated as hardwood.

Architraves, skirtings, mouldings and cill boards to be sized later.


All joinery ex. profiles.

On site dimensions to be taken, recorded and approved prior to fabrication.

Ironmongery to be decided later but to include:

- For faulight - 1 pair 100mm brass hinges, brass stay & fastener, security bolt as required
- For door - 1/2 pair 100mm brass hinges to each leaf, 4 no. brass flush bolts, Mortice dead lock (security type), Security bolts, Internal knob set in brass, cabin hooks and wall eyes in brass fixed on approved pads.

REVISIONS



de BRANT JOYCE & PARTNERS  
ARCHITECTS, PLANNING AND INTERIOR DESIGN CONSULTANTS  
8 QUEEN ANNE STREET, LONDON W1M 9LD  
TELEPHONE 01 537 9845  
TELEX NO 8954314  
CABLES MOHANDIS LONDON W1

JOB  
FLAT No. 42, CUMBERLAND TERRACE, REGENTS PARK, LONDON NW1

TITLE  
NEW GLAZED DOOR IN PLACE OF EXISTING WINDOW.

SCALE 1:25 & 1:2

DATE APRIL 1987 DRAWN RJA

DWG NO 416/01 REV

H5 8770141  
TP 87 00837