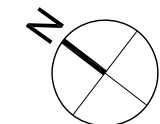
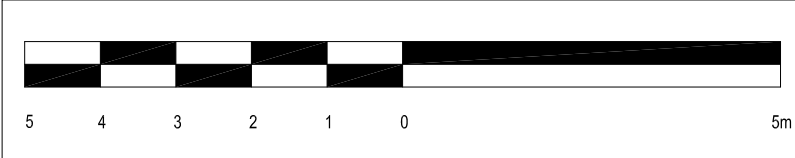
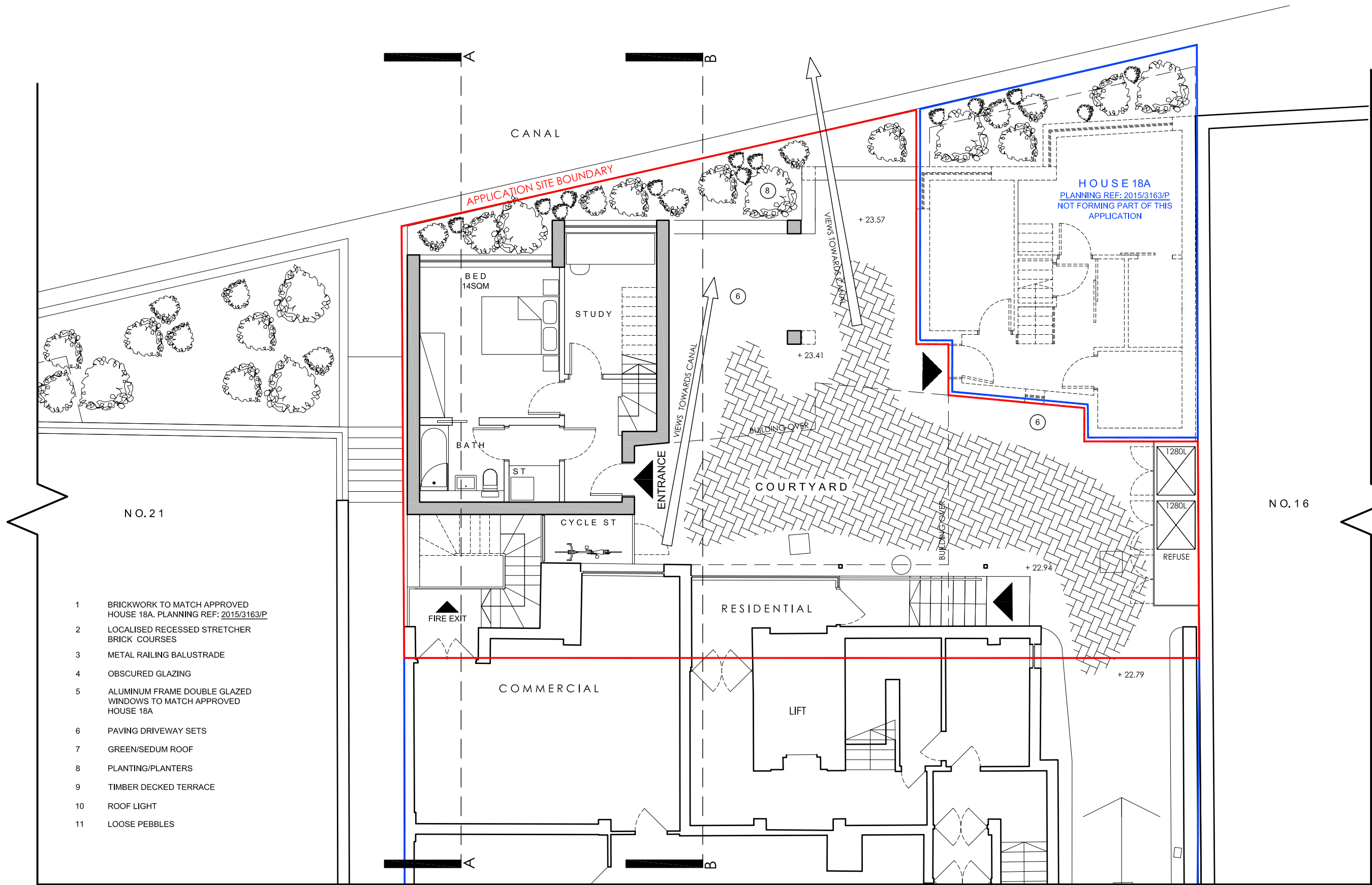


LOWER GROUND FLOOR

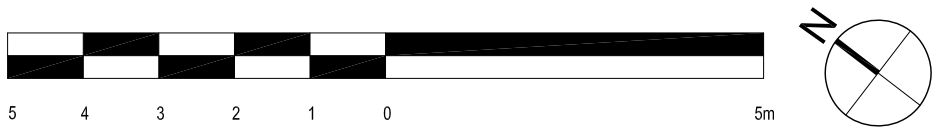


| | | | |
|-----------|---------------------------------------|------------|-------|
| project | 18-20 St Pancras Way, London, NW1 0QG | | |
| dwg title | PROPOSED Lower Ground Floor | | |
| job no. | 1730 | dwg no. | PA.01 |
| date | SEPT 2018 | scale @ A3 | 1:100 |
| | | rev. | A |



- 1 BRICKWORK TO MATCH APPROVED HOUSE 18A. PLANNING REF: 2015/3163/P
- 2 LOCALISED RECESSED STRETCHER BRICK COURSES
- 3 METAL RAILING BALUSTRADE
- 4 OBSCURED GLAZING
- 5 ALUMINUM FRAME DOUBLE GLAZED WINDOWS TO MATCH APPROVED HOUSE 18A
- 6 PAVING DRIVEWAY SETS
- 7 GREEN/SEDUM ROOF
- 8 PLANTING/PLANTERS
- 9 TIMBER DECKED TERRACE
- 10 ROOF LIGHT
- 11 LOOSE PEBBLES

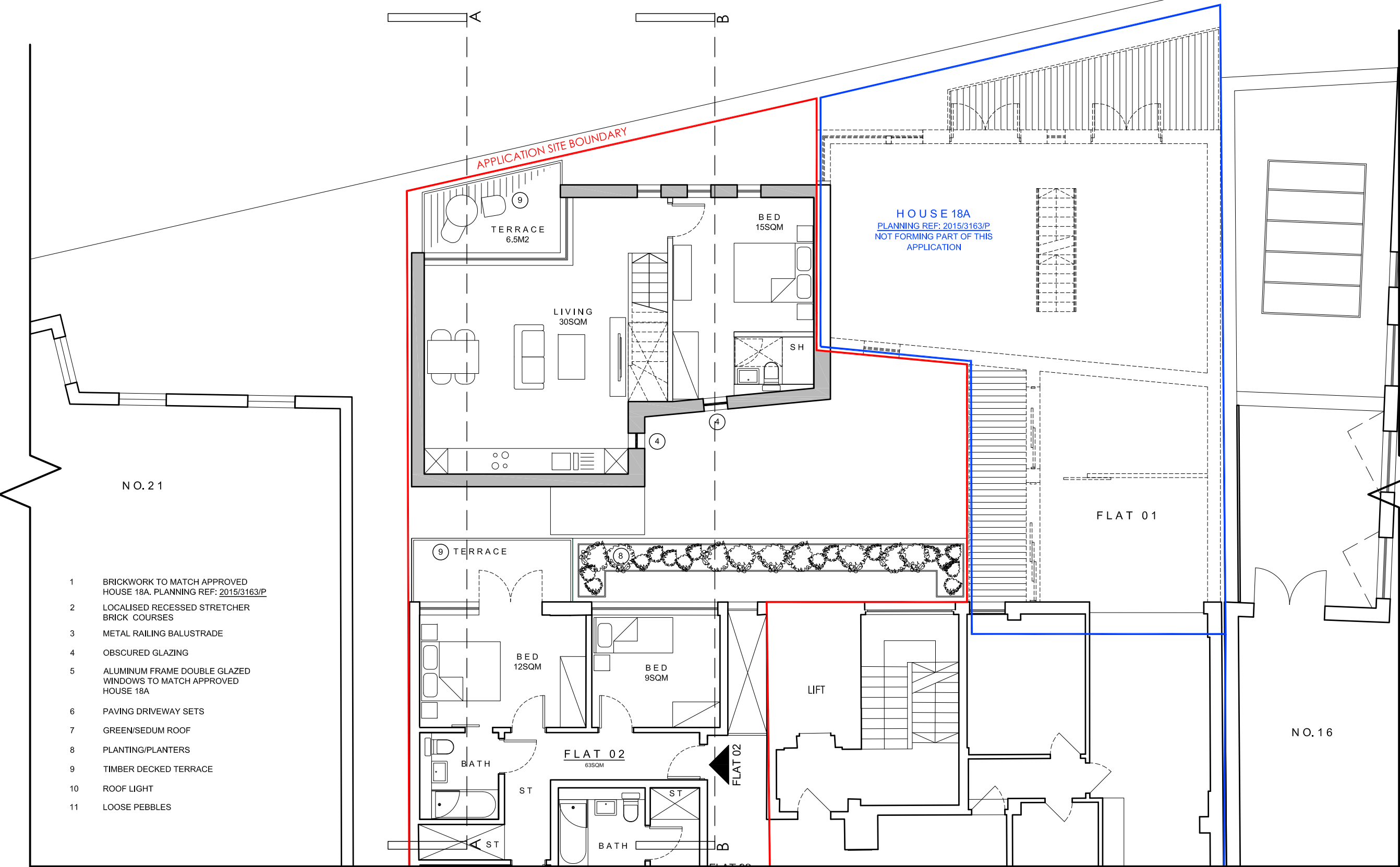
UPPER GROUND FLOOR



tasou architects + structural engineers
 associates 4 Amwell Street, London, EC1R 1UG T:020 7713 7070 F:020 7713 7071 E:tasou@tasou.co.uk

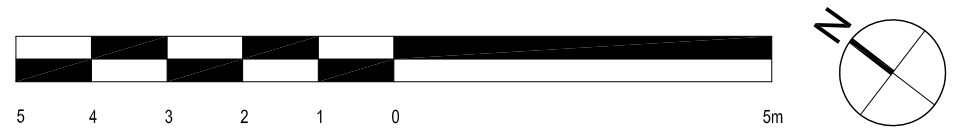
PLANNING

| | | | |
|-----------|---------------------------------------|------------|-------|
| project | 18-20 St Pancras Way, London, NW1 0QG | | |
| dwg title | PROPOSED Upper Ground Floor | | |
| job no. | 1730 | dwg no. | PA.02 |
| date | SEPT 2018 | scale @ A3 | 1:100 |
| | | rev. | A |



- 1 BRICKWORK TO MATCH APPROVED HOUSE 18A. PLANNING REF: 2015/3163/P
- 2 LOCALISED RECESSED STRETCHER BRICK COURSES
- 3 METAL RAILING BALUSTRADE
- 4 OBSCURED GLAZING
- 5 ALUMINUM FRAME DOUBLE GLAZED WINDOWS TO MATCH APPROVED HOUSE 18A
- 6 PAVING DRIVEWAY SETS
- 7 GREEN/SEDUM ROOF
- 8 PLANTING/PLANTERS
- 9 TIMBER DECKED TERRACE
- 10 ROOF LIGHT
- 11 LOOSE PEBBLES

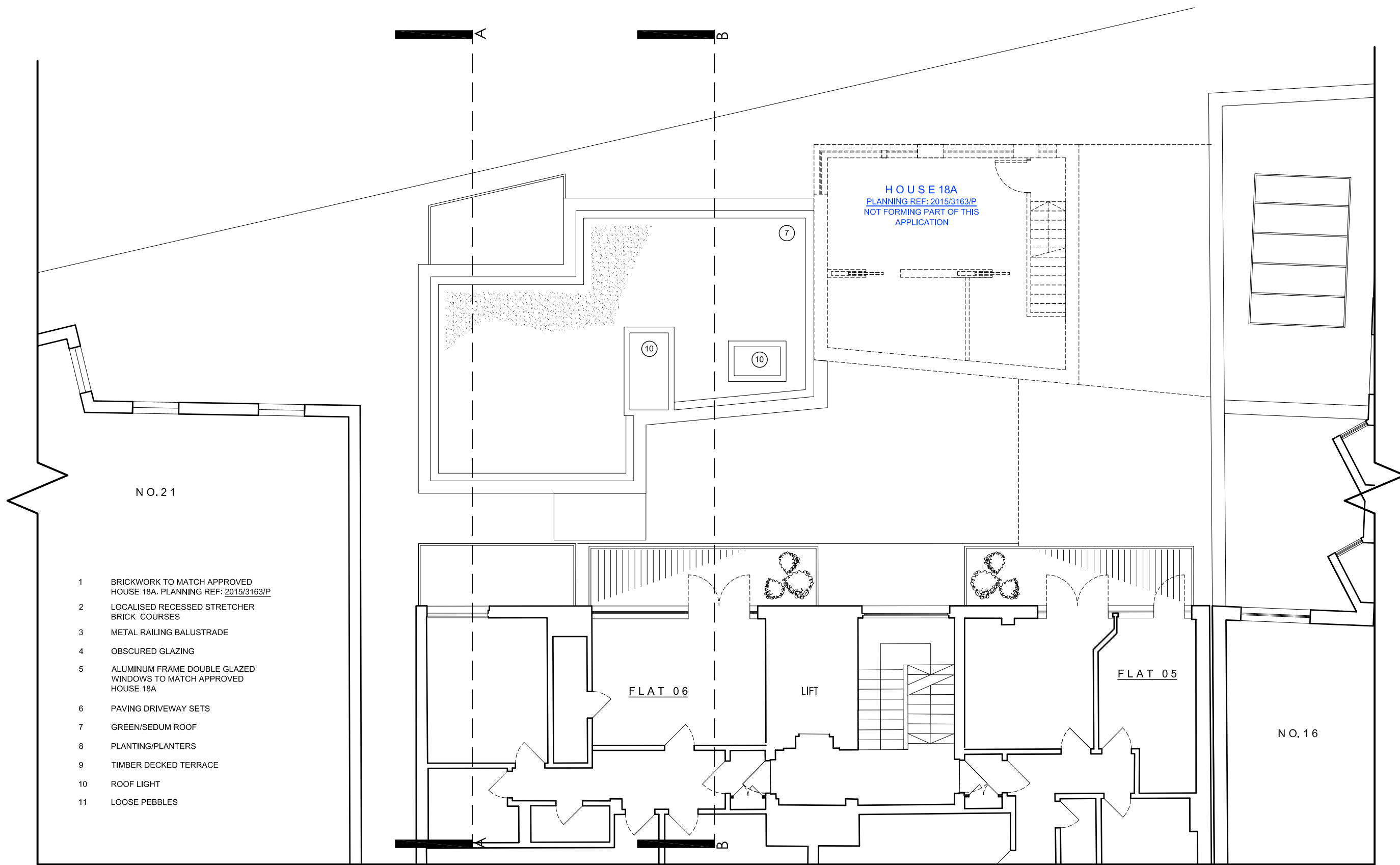
FIRST FLOOR



tasou architects + structural engineers
 associates 4 Arwell Street, London, EC1R 1UG T:020 7713 7070 F:020 7713 7071 E:tasou@tasou.co.uk

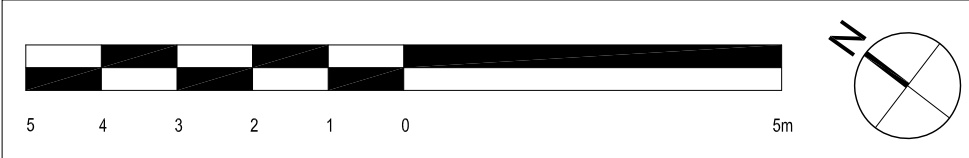
PLANNING

| | | | |
|-----------|---------------------------------------|------------|-------|
| project | 18-20 St Pancras Way, London, NW1 0QG | | |
| dwg title | PROPOSED First Floor | | |
| job no. | 1730 | dwg no. | PA.03 |
| date | SEPT 2018 | scale @ A3 | 1:100 |
| | | rev. | A |



- 1 BRICKWORK TO MATCH APPROVED HOUSE 18A. PLANNING REF: 2015/3163/P
- 2 LOCALISED RECESSED STRETCHER BRICK COURSES
- 3 METAL RAILING BALUSTRADE
- 4 OBSCURED GLAZING
- 5 ALUMINUM FRAME DOUBLE GLAZED WINDOWS TO MATCH APPROVED HOUSE 18A
- 6 PAVING DRIVEWAY SETS
- 7 GREEN/SEDUM ROOF
- 8 PLANTING/PLANTERS
- 9 TIMBER DECKED TERRACE
- 10 ROOF LIGHT
- 11 LOOSE PEBBLES

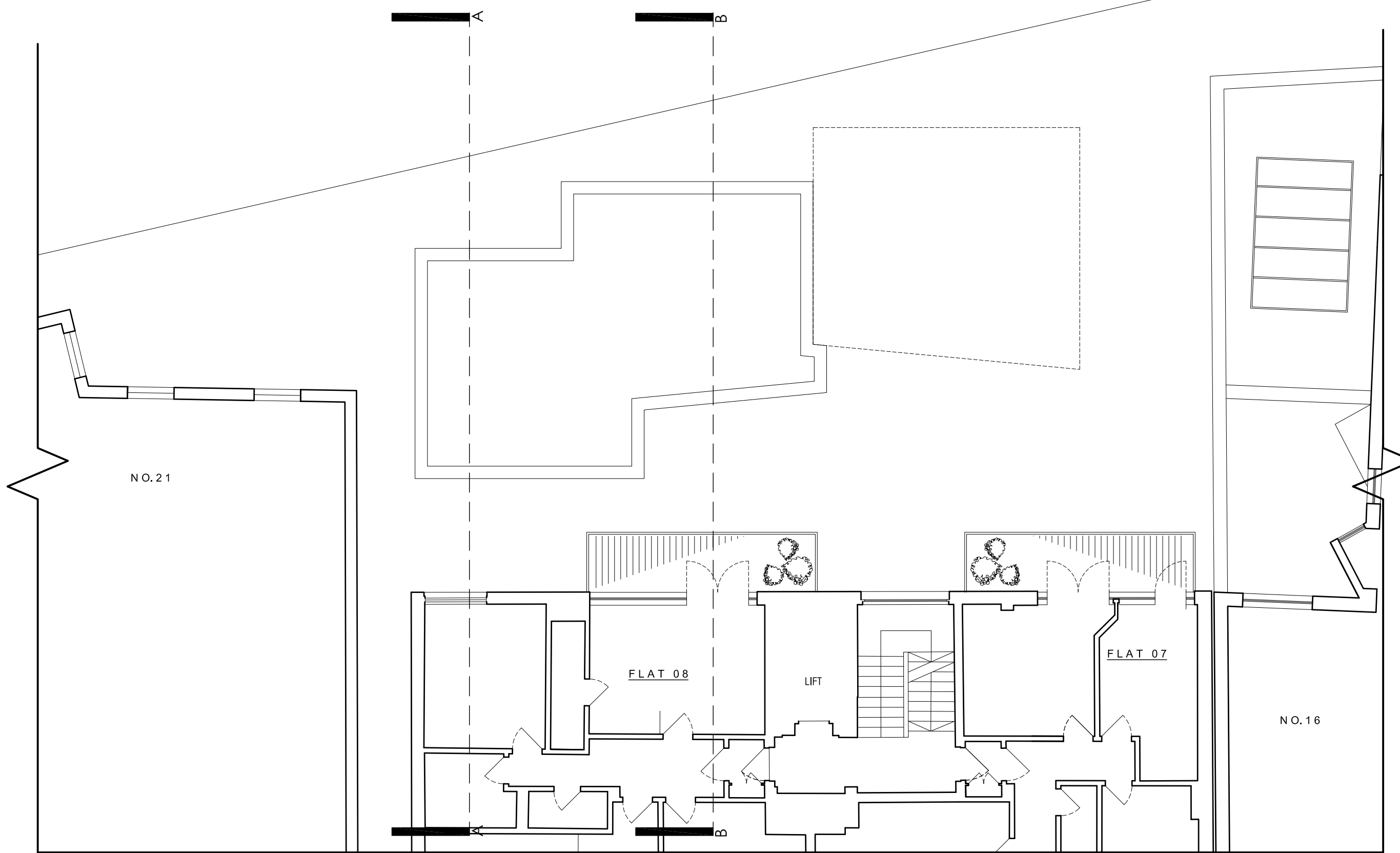
SECOND FLOOR



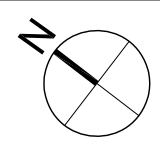
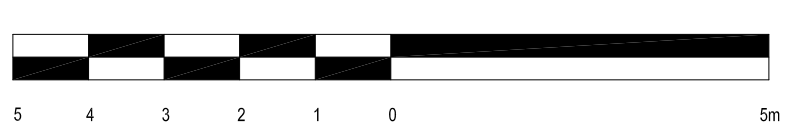
tasou architects + structural engineers
 associates 4 Amwell Street, London, EC1R 1UG T:020 7713 7070 F:020 7713 7071 E:tasou@tasou.co.uk

PLANNING

| | | | |
|-----------|---------------------------------------|------------|--------------|
| project | 18-20 St Pancras Way, London, NW1 0QG | | |
| dwg title | PROPOSED Second Floor | | |
| job no. | 1730 | dwg no. | PA.04 rev. A |
| date | SEPT 2018 | scale @ A3 | 1:100 |



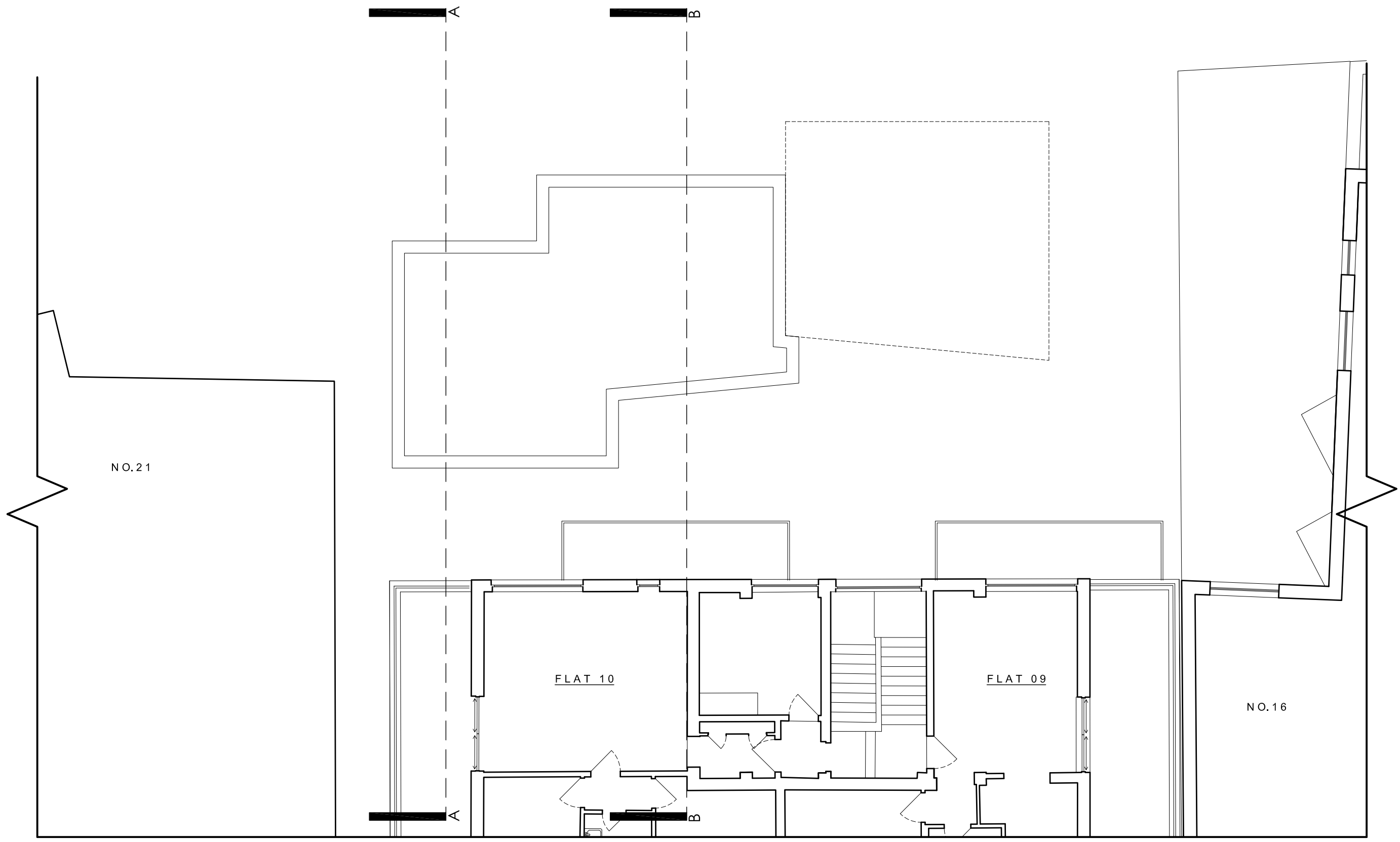
THIRD FLOOR



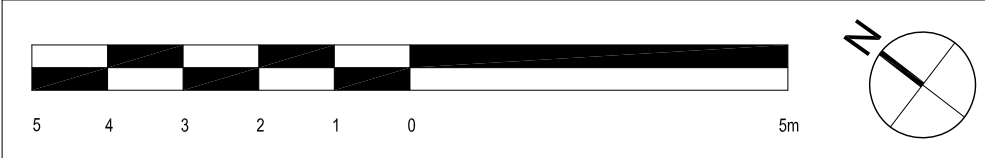
tasou architects + structural engineers
associates 4 Amwell Street, London, EC1R 1UG T:020 7713 7070 F:020 7713 7071 E:tasou@tasou.co.uk

PLANNING

| | | | |
|-----------|---------------------------------------|------------|-------|
| project | 18-20 St Pancras Way, London, NW1 0QG | | |
| dwg title | PROPOSED Third Floor | | |
| job no. | 1730 | dwg no. | PA.05 |
| date | SEPT 2018 | scale @ A3 | 1:100 |
| | | rev. | A |



FOURTH FLOOR



tasou architects + structural engineers
associates 4 Amwell Street, London, EC1R 1UG T:020 7713 7070 F:020 7713 7071 E:tasou@tasou.co.uk

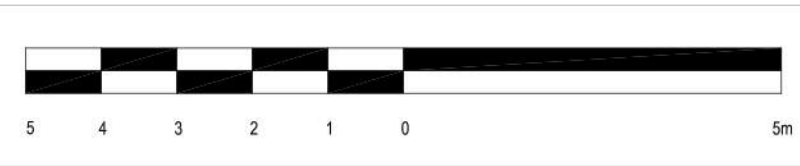
PLANNING

| | | | |
|-----------|---------------------------------------|------------|--------------|
| project | 18-20 St Pancras Way, London, NW1 0QG | | |
| dwg title | PROPOSED Fourth Floor | | |
| job no. | 1730 | dwg no. | PA.06 rev. A |
| date | SEPT 2018 | scale @ A3 | 1:100 |



- 1 BRICKWORK TO MATCH APPROVED HOUSE 18A. PLANNING REF: 2015/3163/P
- 2 LOCALISED RECESSED STRETCHER BRICK COURSES
- 3 METAL RAILING BALUSTRADE
- 4 OBSCURED GLAZING
- 5 ALUMINUM FRAME DOUBLE GLAZED WINDOWS TO MATCH APPROVED HOUSE 18A
- 6 PAVING DRIVEWAY SETS
- 7 GREEN/SEDUM ROOF
- 8 PLANTING/PLANTERS
- 9 TIMBER DECKED TERRACE
- 10 ROOF LIGHT
- 11 LOOSE PEBBLES

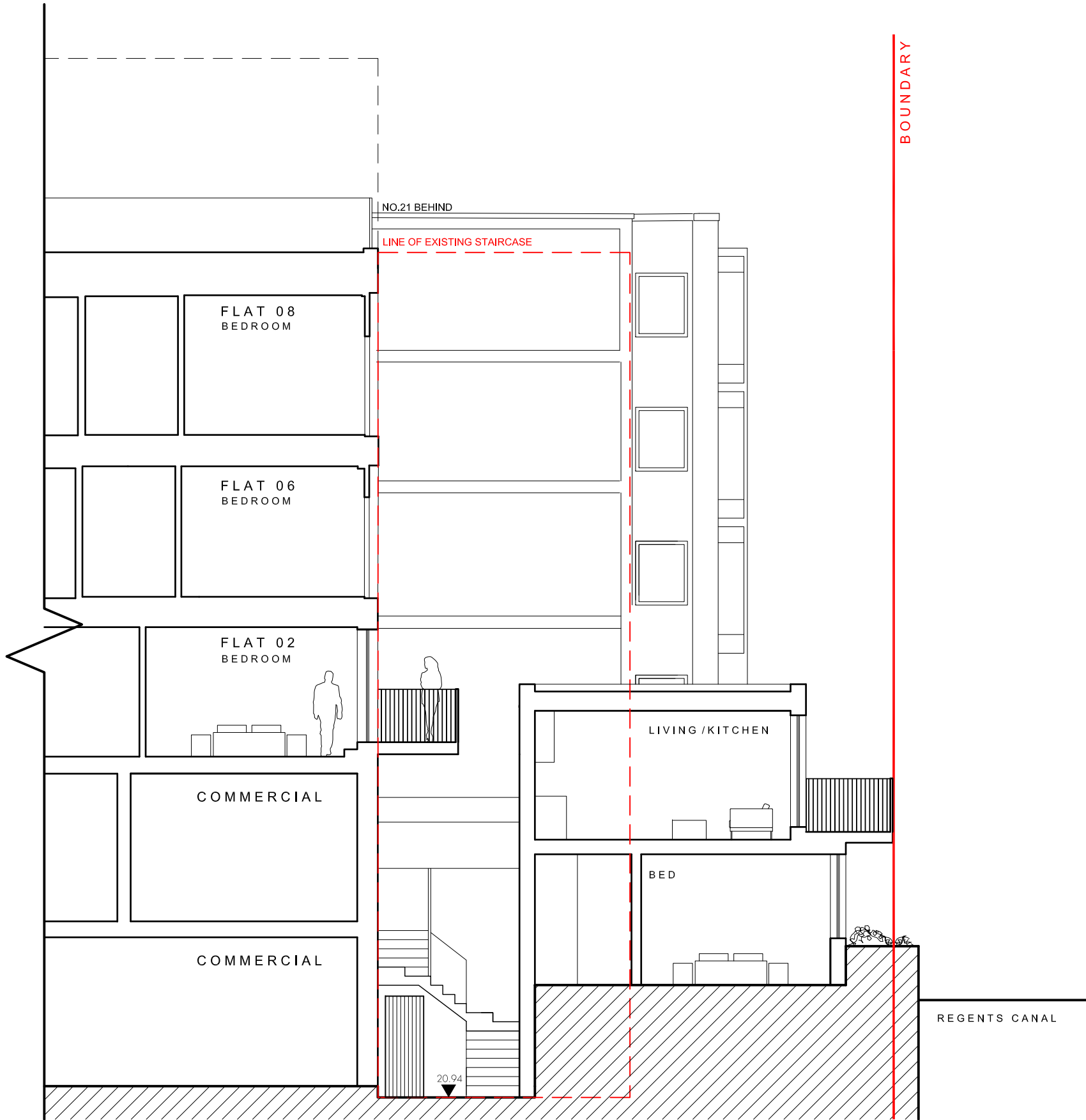
CANAL ELEVATION



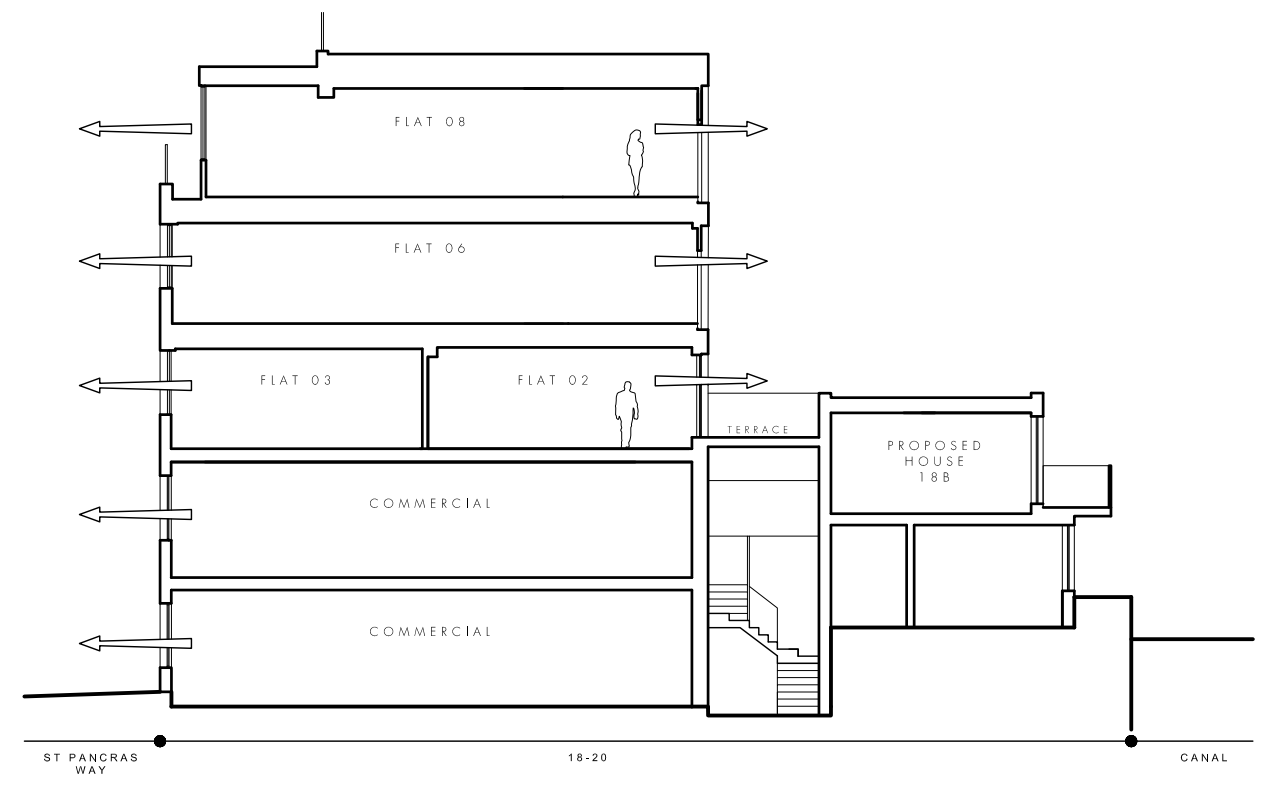
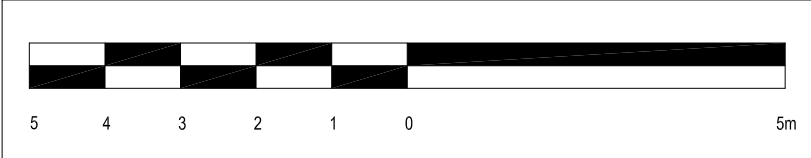
tasou architects + structural engineers.
 associates 4 Amwell Street, London. EC1R 1UG T.020 7713 7070 F.020 7713 7071 E.tasou@tasou.co.uk

PLANNING

| | | | |
|-----------|---------------------------------------|------------|--------------|
| project | 18-20 St Pancras Way, London, NW1 0QG | | |
| dwg title | PROPOSED Canal Elevation | | |
| job no. | 1730 | dwg no. | PA.07 rev. A |
| date | SEPT 2018 | scale @ A3 | 1:100 |



SECTION A



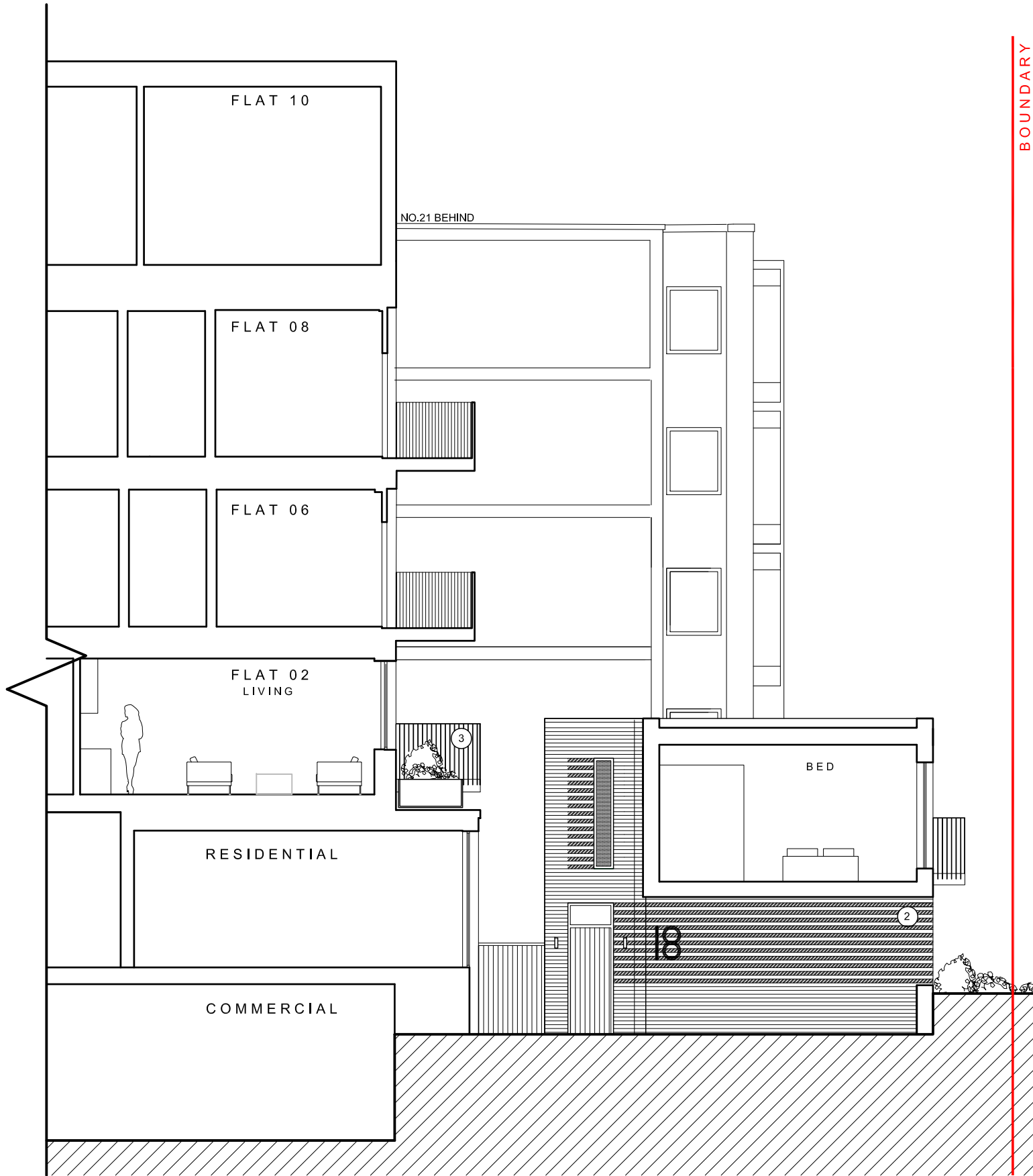
1:200

- 1 BRICKWORK TO MATCH APPROVED HOUSE 18A. PLANNING REF: 2015/3163/P
- 2 LOCALISED RECESSED STRETCHER BRICK COURSES
- 3 METAL RAILING BALUSTRADE
- 4 OBSCURED GLAZING
- 5 ALUMINUM FRAME DOUBLE GLAZED WINDOWS TO MATCH APPROVED HOUSE 18A
- 6 PAVING DRIVEWAY SETS
- 7 GREEN/SEDUM ROOF
- 8 PLANTING/PLANTERS
- 9 TIMBER DECKED TERRACE
- 10 ROOF LIGHT
- 11 LOOSE PEBBLES

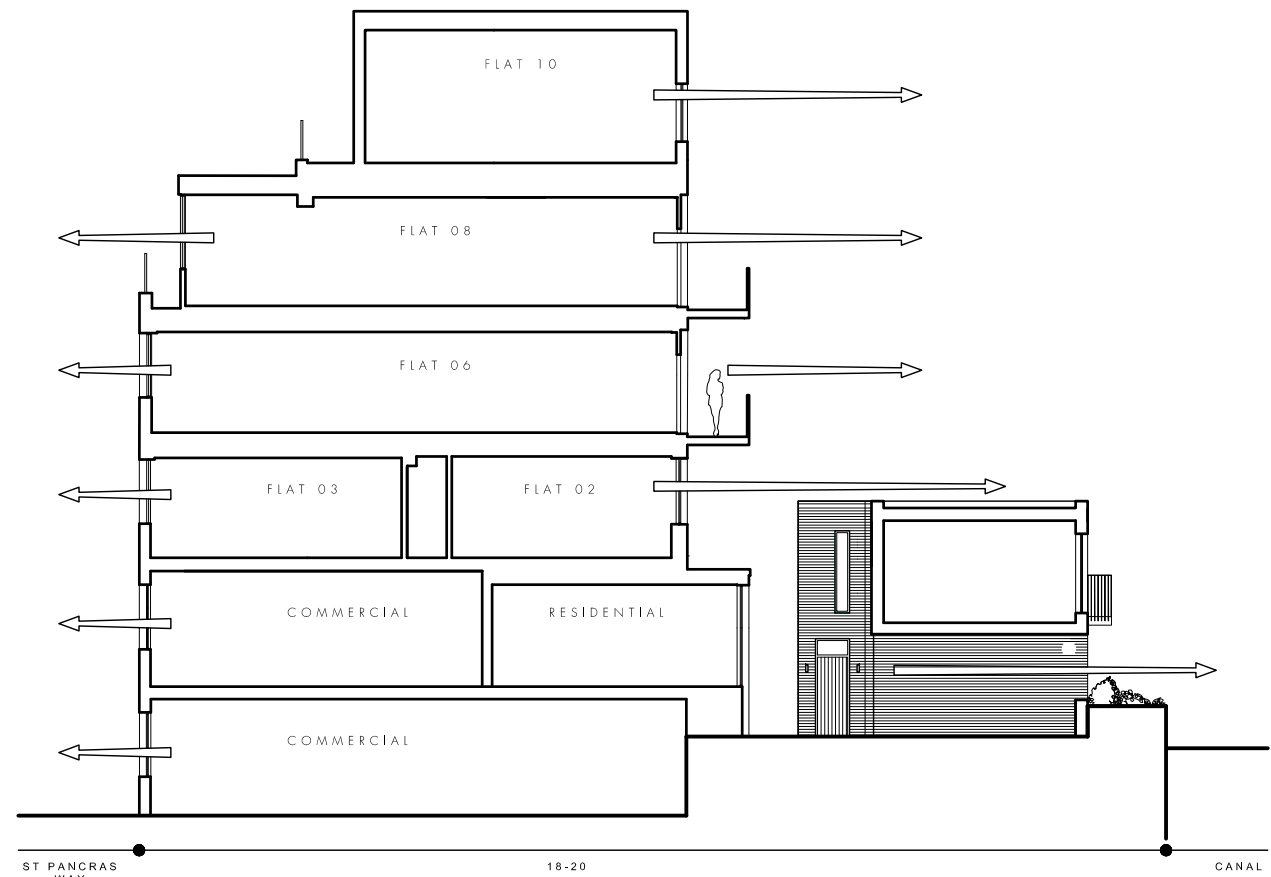
tasou architects + structural engineers
 associates 4 Amwell Street, London, EC1R 1UG T:020 7713 7070 F:020 7713 7071 E:tasou@tasou.co.uk

PLANNING

| | | | |
|-----------|---------------------------------------|------------|--------------|
| project | 18-20 St Pancras Way, London, NW1 0QG | | |
| dwg title | PROPOSED Section A | | |
| job no. | 1730 | dwg no. | PA.08 rev. A |
| date | SEPT 2018 | scale @ A3 | A |



SECTION B



1:200

- 1 BRICKWORK TO MATCH APPROVED HOUSE 18A. PLANNING REF: 2015/3163/P
- 2 LOCALISED RECESSED STRETCHER BRICK COURSES
- 3 METAL RAILING BALUSTRADE
- 4 OBSCURED GLAZING
- 5 ALUMINUM FRAME DOUBLE GLAZED WINDOWS TO MATCH APPROVED HOUSE 18A
- 6 PAVING DRIVEWAY SETS
- 7 GREEN/SEDUM ROOF
- 8 PLANTING/PLANTERS
- 9 TIMBER DECKED TERRACE
- 10 ROOF LIGHT
- 11 LOOSE PEBBLES

| | | | |
|-----------|---------------------------------------|------------|--------------|
| project | 18-20 St Pancras Way, London, NW1 0QG | | |
| dwg title | PROPOSED Section B | | |
| job no. | 1730 | dwg no. | PA.09 rev. A |
| date | SEPT 2018 | scale @ A3 | 1:100 |

