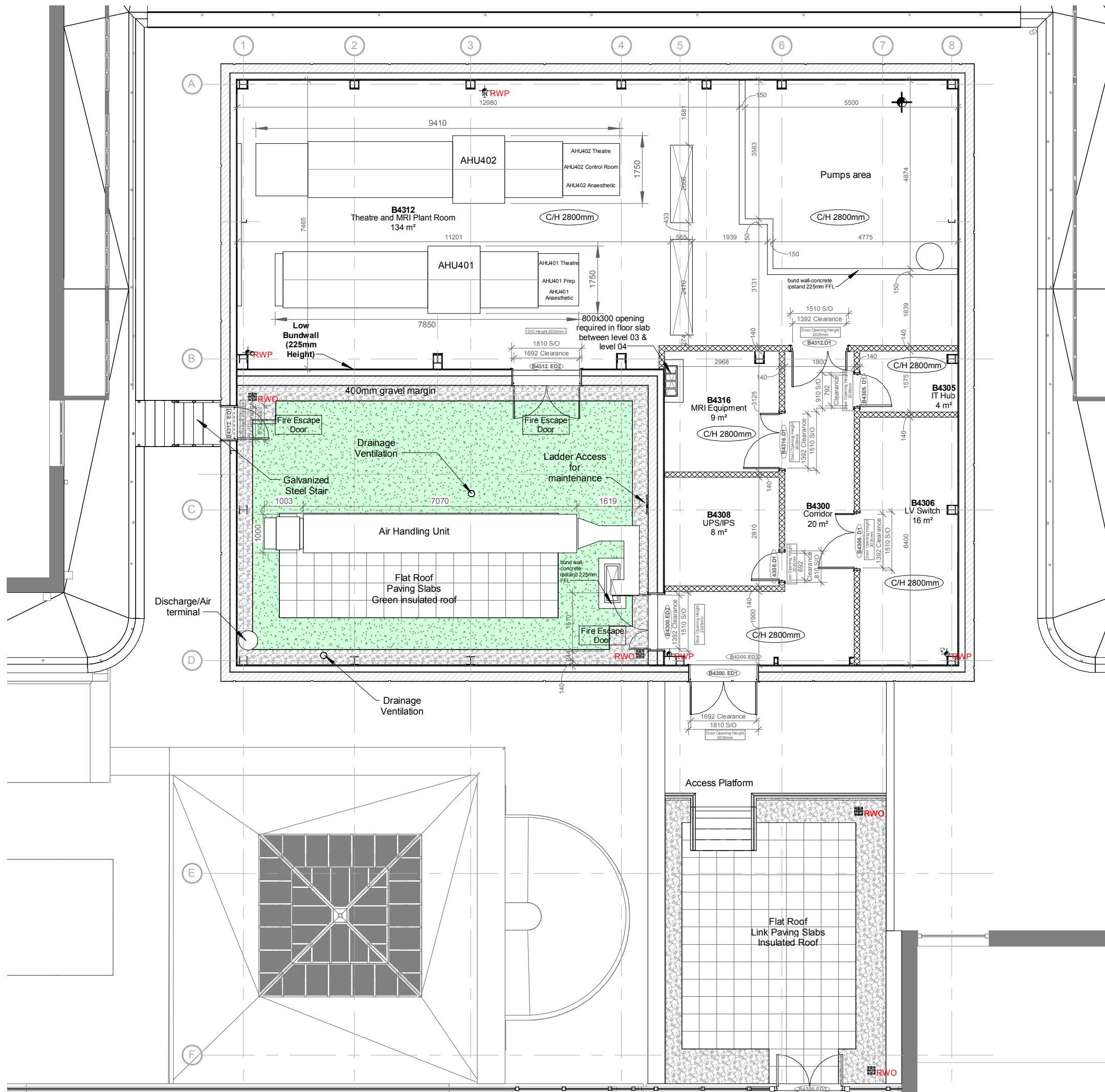


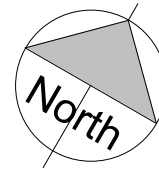
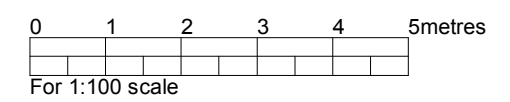
THIS DRAWING IS PROTECTED BY COPYRIGHT - FIGURED DIMENSIONS ONLY TO BE TAKEN FROM THIS DRAWING. DIMENSIONS TO BE CHECKED ON SITE AND ANY DISCREPANCIES REPORTED TO THE ARCHITECT IMMEDIATELY.
 PURPOSE OF ISSUE - A = FOR COMMENT/ CO-ORDINATION B = FOR INFORMATION C = FOR APPROVAL D = FOR TENDER E = FOR CONSTRUCTION F = FINAL DESIGN DRAWING

Rev	Rev Date	Revision Description	Drawn/Checked	Purpose of Issue
A	07/10/2016	Issued For Approval	VS/MH	C
B	16/01/2017	Issued For Approval	VS/MH	C
C	21/02/2017	Issued for Information	VS/MH	C
D	22/03/2017	General Update	VS/MH	C
E	31/03/2017	General Update	VS/MH	C
F	06/04/2017	Colour Added	VS/MH	A
G	11/04/2017	General Issue	VS/MH	A
H	12/04/2017	MRI Equipment Room Relocated	VS/MH	A
J	13/04/2017	General Update	VS/MH	A
K	28/04/2017	Pricing Issue	VS/MH	P
L	12/05/2017	For Planning	VS/MH	C
M	25/05/2017	For Planning	VS/MH	P
N	01/12/2017	For comments	FY/MH	A
P	02/02/2018	Updated to show Chillers	FY/MH	A
Q	09/03/2018	Link Plant removed	FY/MH	A
R	19/03/2018	Issued for information	FY/MH	B
S	25/05/2018	Walls relocated and modified to suit VE advice	FY/MH	A
T	08/06/2018	Layout updated to suit M&E comments	FY/MH	A
U	15/06/2018	Dimensions Level 04 updated to meet M&E Requirements. Room Tags updated.	FY/MH	A
V	21/06/2018	Updated to Show Ceiling Heights and Door Clearances	FY/MH	A
W	06/07/2018	Update to show modified external wall thickness	FY/MH	A
X	17/08/2018	Door & Windows numbers revised and added	FY/MH	A
Y	21/09/2018	London wall relocated. External ramp partially updated. Gridlines 1 & 8 updated. IPS references added	FY/MH	A
Z	02/10/2018	AHU dimensions added. Plant room bundled	FY/MH	A
AA	23/10/2018	Issued for construction	FY/MH	E
BB	09/11/2018	Updated to show updated pumps area bundled. Slab openings for ducts added	FY/MH	E
CC	19/11/2018	For Planning	FY/MH	P



Ceiling on Level 04: UNISTRUT P1000T
 Channels @1200mm C/C TEK SCREW Fixed to the metal deck soffit

Number	Area	Name
B4308	8 m²	UPS/IPS
B4306	16 m²	LV Switch
B4300	20 m²	Corridor
B4312	134 m²	Theatre and MRI Plant Room
B4316	9 m²	MRI Equipment
B4305	4 m²	IT Hub



FOR PLANNING

Proposed Level 04 (Second Floor) Plan	16021	(01)004	CC
	JOB NUMBER	DRAWING NUMBER	REV
Great Ormond Street Hospital for Children - NHS Foundation Trust	19/11/2018	1 : 100	
	DATE	SCALE @ A3	

Ansell & Bailey Ltd Chartered Architects . 17 Bowling Green Ln . London . EC1R 0QB . 020 73870141 . architects@ansellandbailey.com

ANSELL + BAILEY