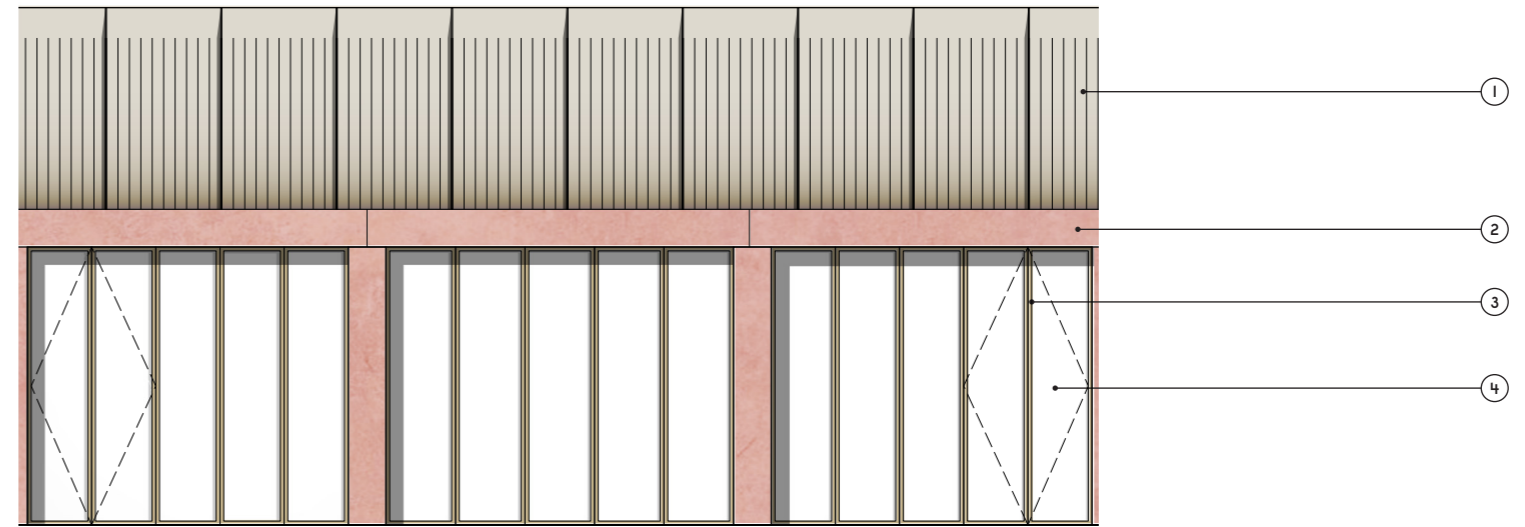


**Material Key**

- 1. Coated metal cladding
- 2. Pigmented concrete
- 3. Metal window frames
- 4. Glazing



**Hall Elevation - Bay Study**

Planning



First Issue	15.01.19	AB	-
Revision description	Date	Init	Rev
<small>29-31 Cowper Street London EC2A 4AT T +44 (0) 20 7831 1903 F +44 (0) 20 7890 1940 W www.rcka.co.uk</small>			
Title		Client	
Bay Study As Proposed Hall Elevation		Camden Council	
Project	Camden HNCC	Drawn by	Checked
Date	15.01.2018	CS	AB
Job No	1415	Draw No	PL-E-105
		Revision	-

©2019 RCKA. This drawing is not to be scaled - use written dimensions only. Any discrepancies to be reported to the architect, AB @ rckaco.uk