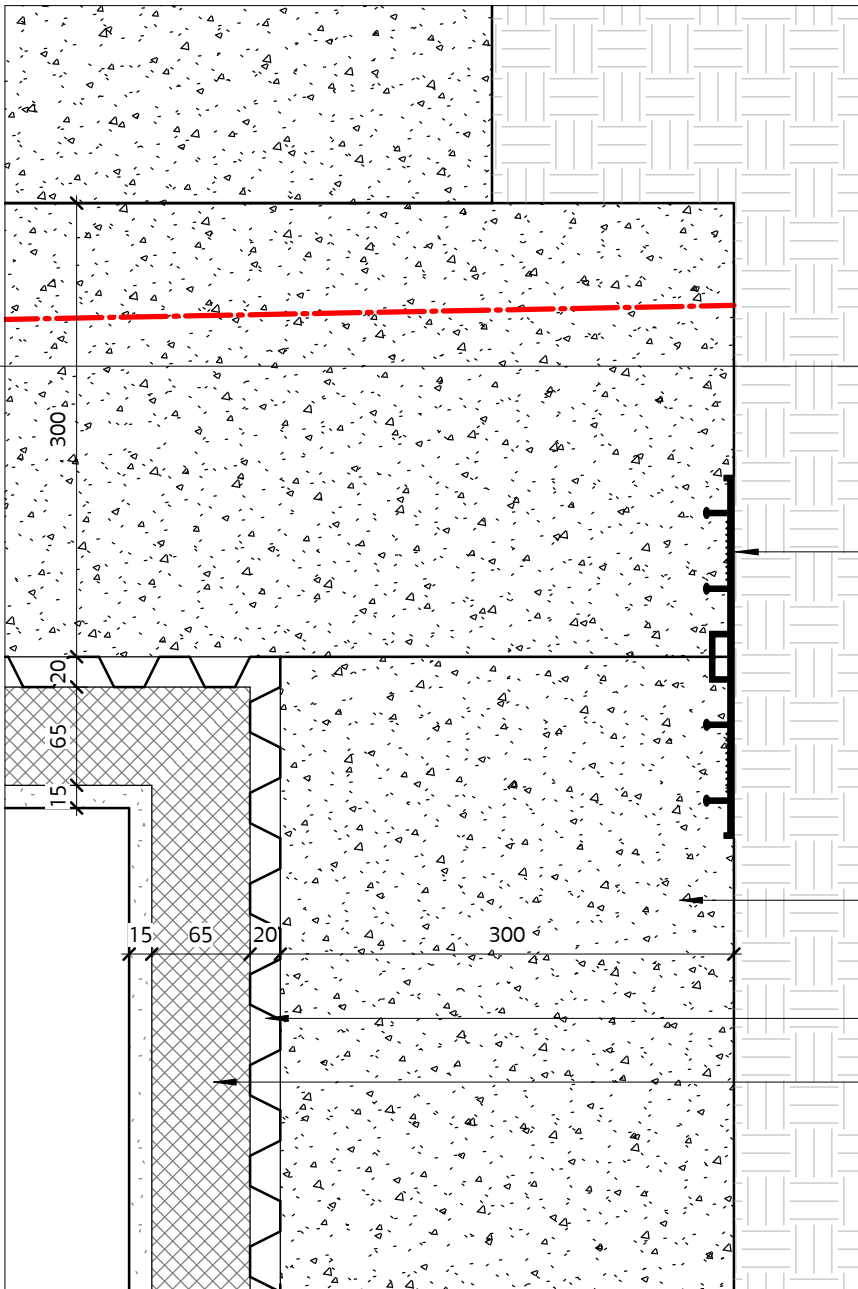
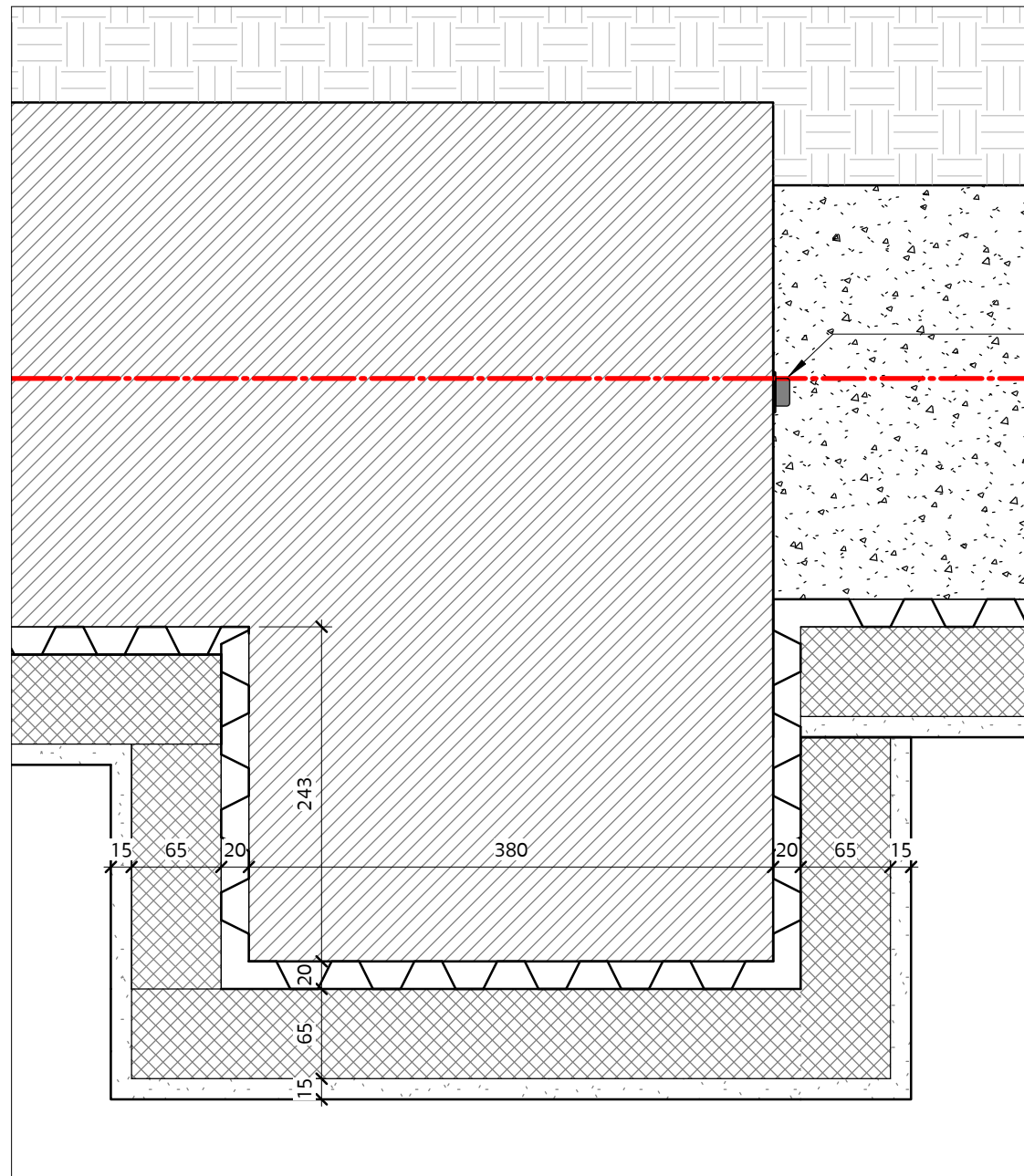


THIS DRAWING IS COPYRIGHT. ALL RIGHTS RESERVED.
DO NOT SCALE FROM THIS DRAWING. WORK FROM FIGURED DIMENSIONS ONLY. ALL DIMENSIONS ARE IN mm, UNLESS OTHERWISE STATED.



SIKA SIKASWELL Sealing Tape at connection to Existing structure

SIKA WATERBAR joint

Waterproof Concrete to Structural Engineer's specification

DELTA MS20 Dimpled Sheet Cavity Drain membrane

KINGSPAN KOOLTHERM K118 insulating plasterboard
internal lining plaster skim

01

Detail 01

1:5

02

Detail 02

1:5

01	12.06.18	Tender	AH	TJM
REV	DATE	DESCRIPTION	DRW	CHK

MOXON

LONDON
Great Western Studios, 65 Alfred Road, London W2 5EU
t 0207 034 0088 | f 0207 034 0099

SCOTLAND
Ardoch, Crathie, Aberdeenshire AB35 5UN
t 01339 742047 | f 0207 034 0099

mail@moxonarchitects.com | www.moxonarchitects.com

Project	9 St-Martins Almshouses		
Drawing Title	Details		
Status	Tender		
Drawn by	AH	Checked by	TJM
Project No.	599	Scale	1:5
Drawn by	Date		01.11.16
Project No.	599	Scale	1:5
Size	A3 (420x297mm)		
Drawing No.	599_360		Rev. 01