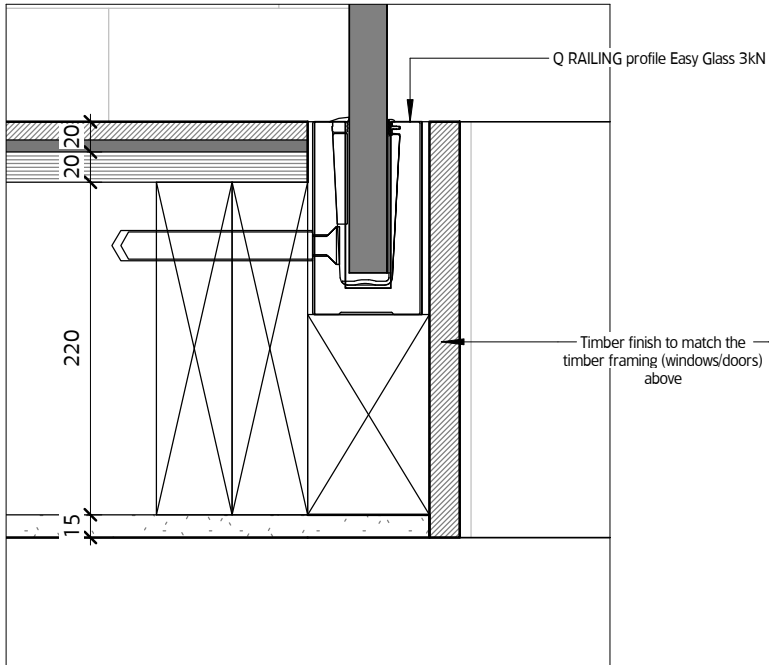
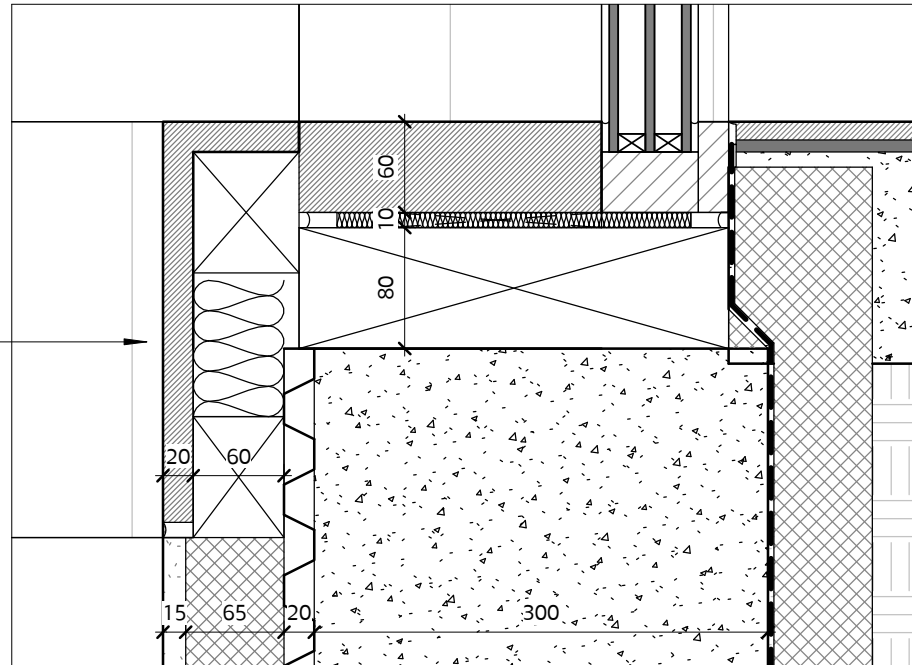


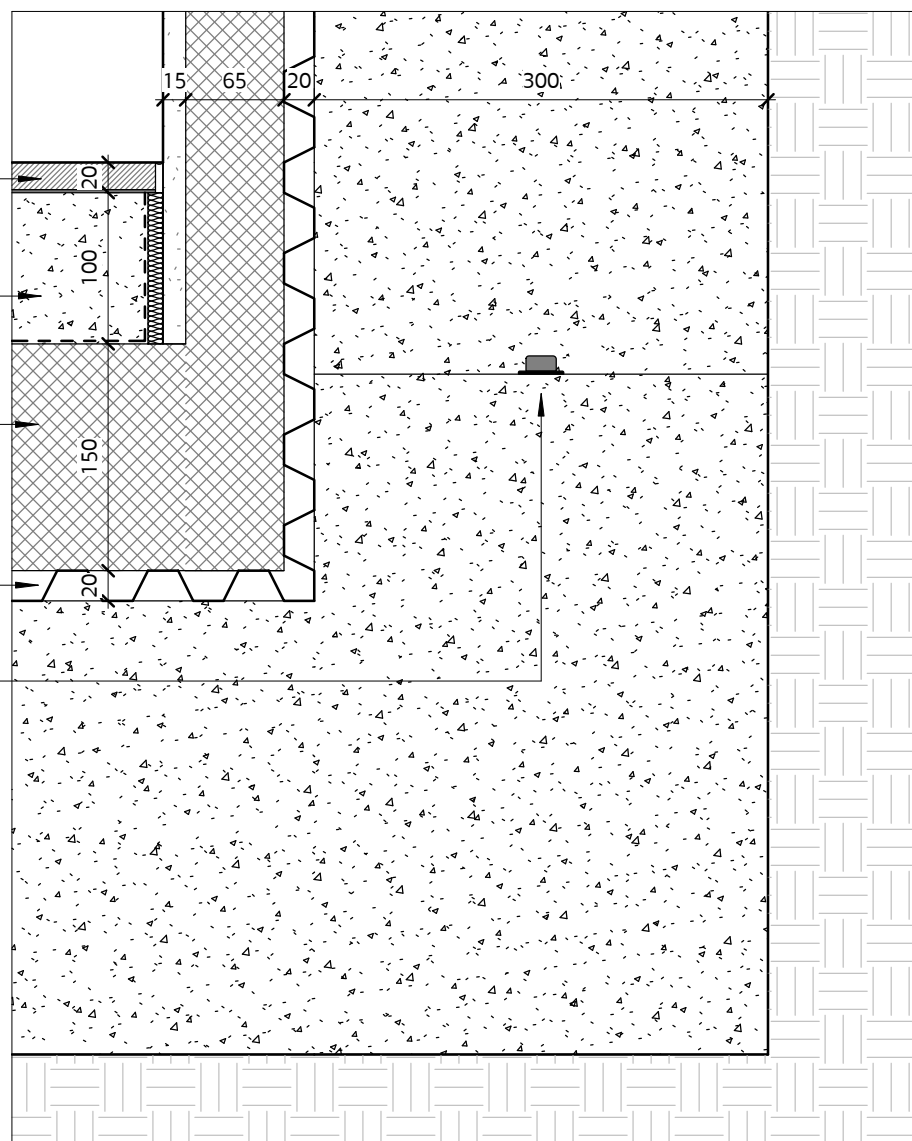
03 Detail 03
1:5



01 Detail 01
1:5



- Engineered timber floor
- Floated Concrete screed
- KINGSPAN STYROZONE expanded polystyrene insulation
- DELTA MS20 dimpled sheet cavity drain membrane
- SIKA SIKASWEL sealing tape



02 Detail 02
1:5

01	12.06.18	Tender	AH	TJM
REV	DATE	DESCRIPTION	DRW	CHK

MOXON

LONDON
Great Western Studios, 65 Alfred Road, London W2 5EU
t 0207 034 0088 | f 0207 034 0099

SCOTLAND
Ardoch, Crathie, Aberdeenshire AB35 5UN
t 01339 742047 | f 0207 034 0099

mail@moxonarchitects.com | www.moxonarchitects.com

Project	9 St-Martins Almshouses			
Drawing Title	Details			
Status	Tender			
Drawn by	AH	Checked by	TJM	
Project No.	599	Scale	1:5	
Date	01.11.16		Size	A1 (841x594mm)
Drawing No.	599_371		Rev.	01