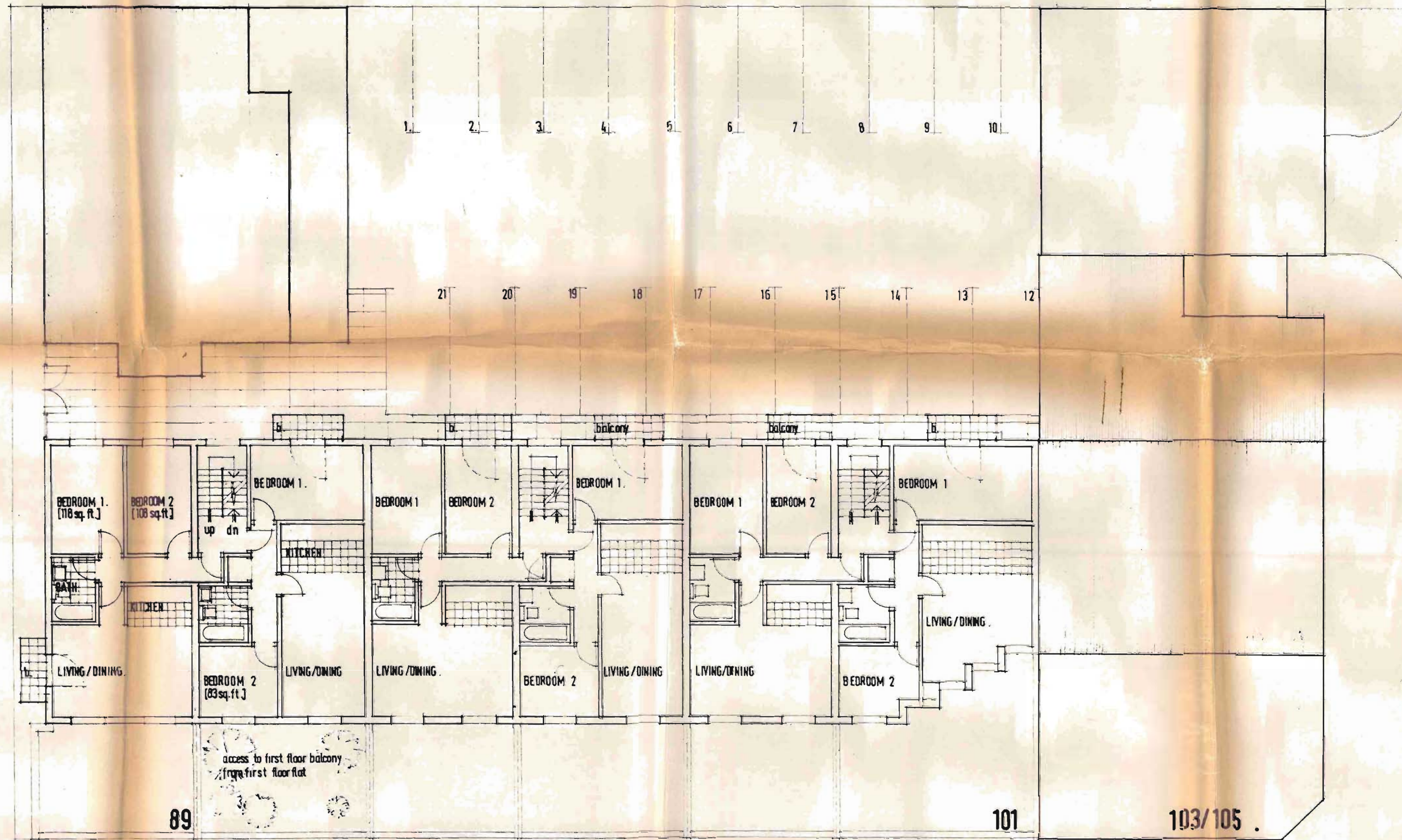


89-101 HAMPSTEAD ROAD
Org.No. PB/1/1.

LTP 850052313

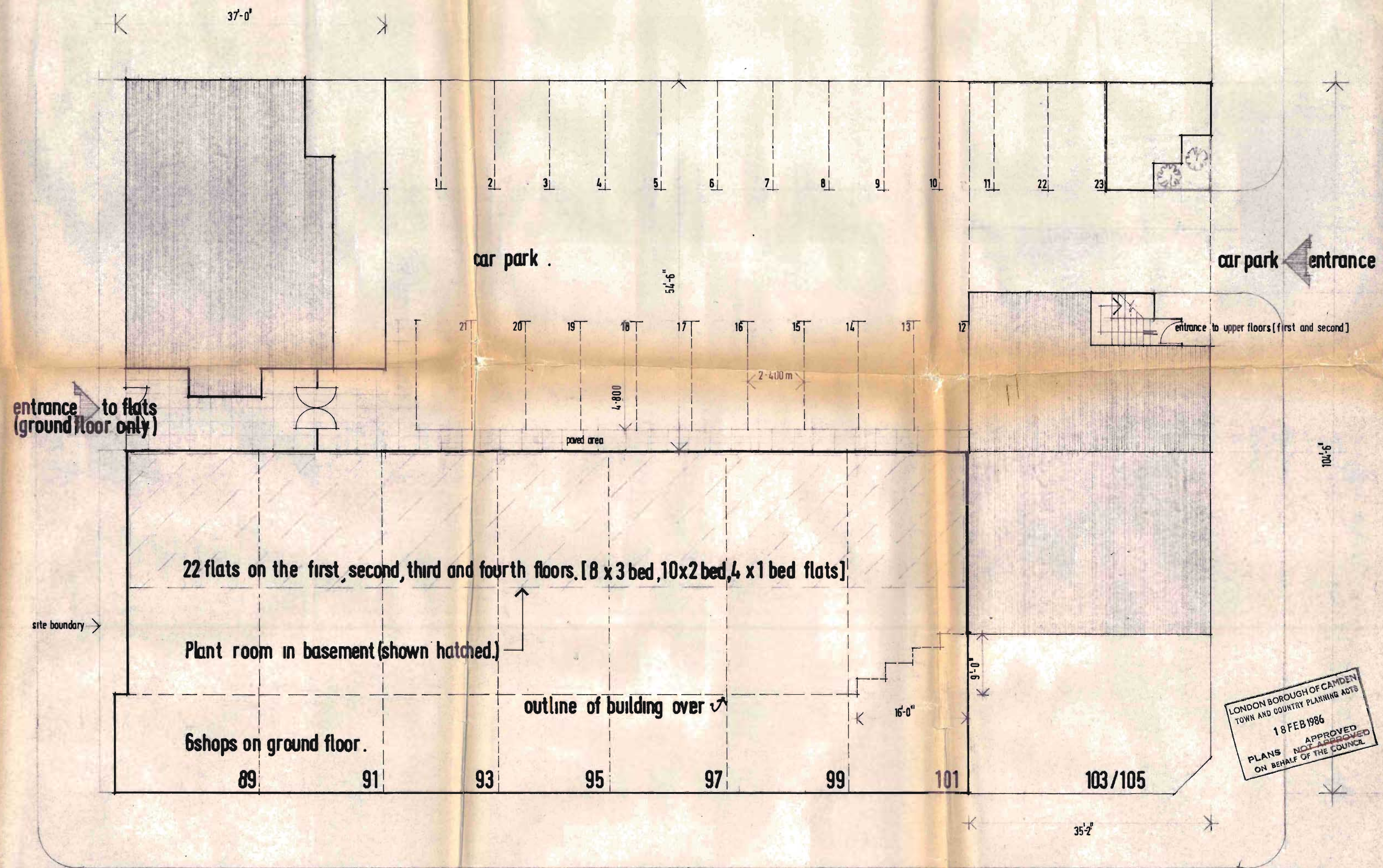


THIRD FLOOR PLAN [6 x 2-bed flats]

89-101 HAMPSTEAD ROAD AND 1a NETLEY STREET NW1.
 Drg. No. PB/1/4.
 Scale: 8 ft to 1 inch.

LONDON BOROUGH OF CAMDEN
 TOWN AND COUNTRY PLANNING ACTS
 18 FEB 1986
 APPROVED
 PLANS
 ON BEHALF OF THE COUNCIL

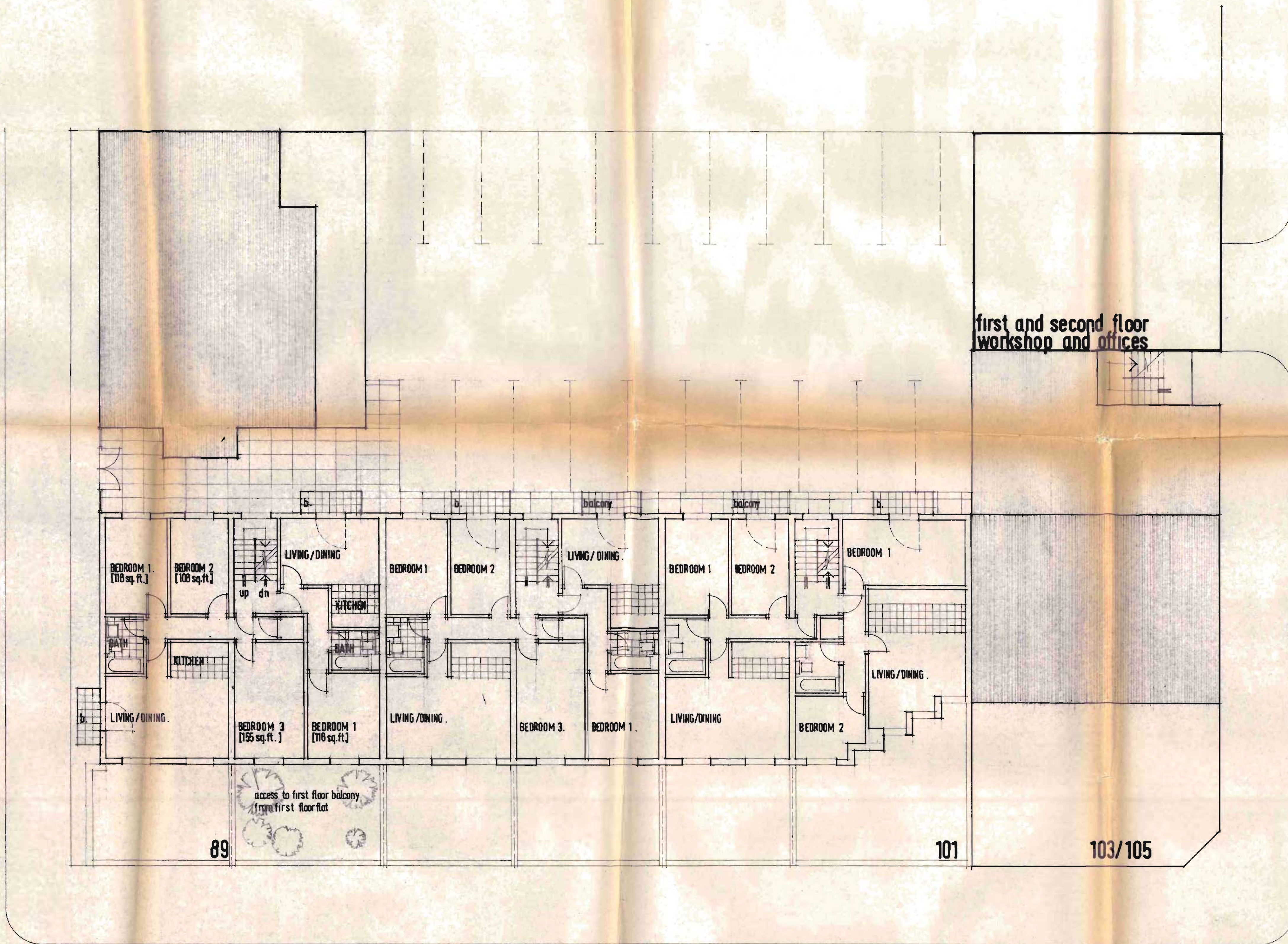
TP 8500523R5



GROUND FLOOR PLAN.

89-101 HAMPSTEAD ROAD AND 1a NETLEY STREET NW1
 Drg.No. PB/1/1b
 Scale: 8ft. to 1 inch.
 Rev. B. General revisions. Date: 26.1.1986.

TP 8500523 R3



FIRST AND SECOND FLOOR PLANS .

89-101 HAMPSTEAD ROAD 1a NETLEY STREET, NW1.
 Drg. No. PB/1/2^A.
 Scale: 8 ft. to 1 inch.

Rev. A. Dwelling unit type altered,
 and general alterations. Date: 26-1-1986.

LONDON BOROUGH OF CAMDEN
 TOWN AND COUNTRY PLANNING ACTS
 18 FEB 1986
 APPROVED
 PLANS NOT REVISED
 ON BEHALF OF THE COUNCIL

TP 8500523 R5



FOURTH FLOOR PLAN [4x3-bed flats]

89-101 HAMPSTEAD ROAD AND 1a NETLEY STREET NW1.
 Drg. No. PB/1/3.

LONDON BOROUGH OF CAMDEN
 TOWN AND COUNTRY PLANNING ACTS
 18 FEB 1986
 APPROVED
 PLANS ~~NOTIFIED~~
 ON BEHALF OF THE COUNCIL

TP 8500523RS