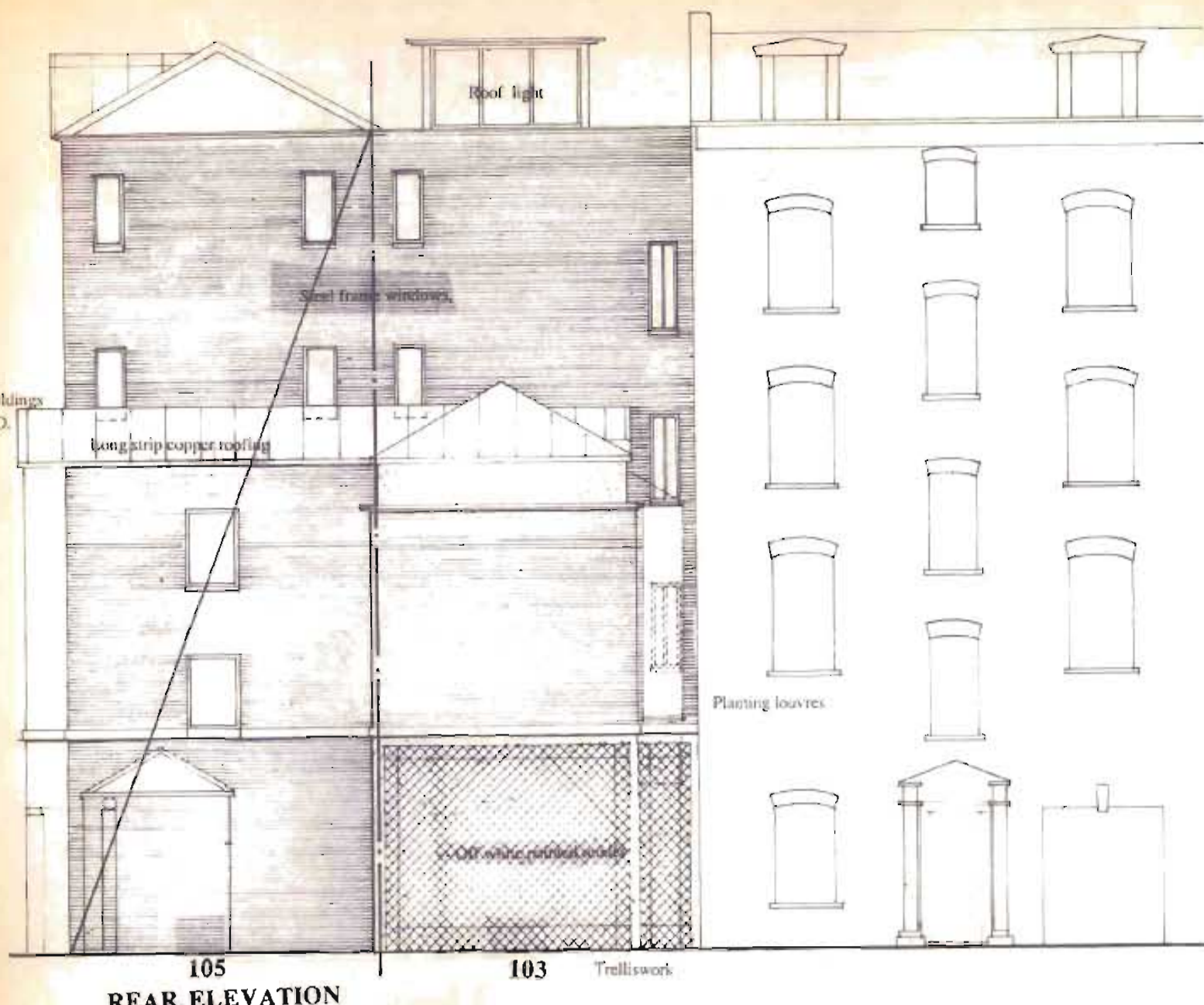
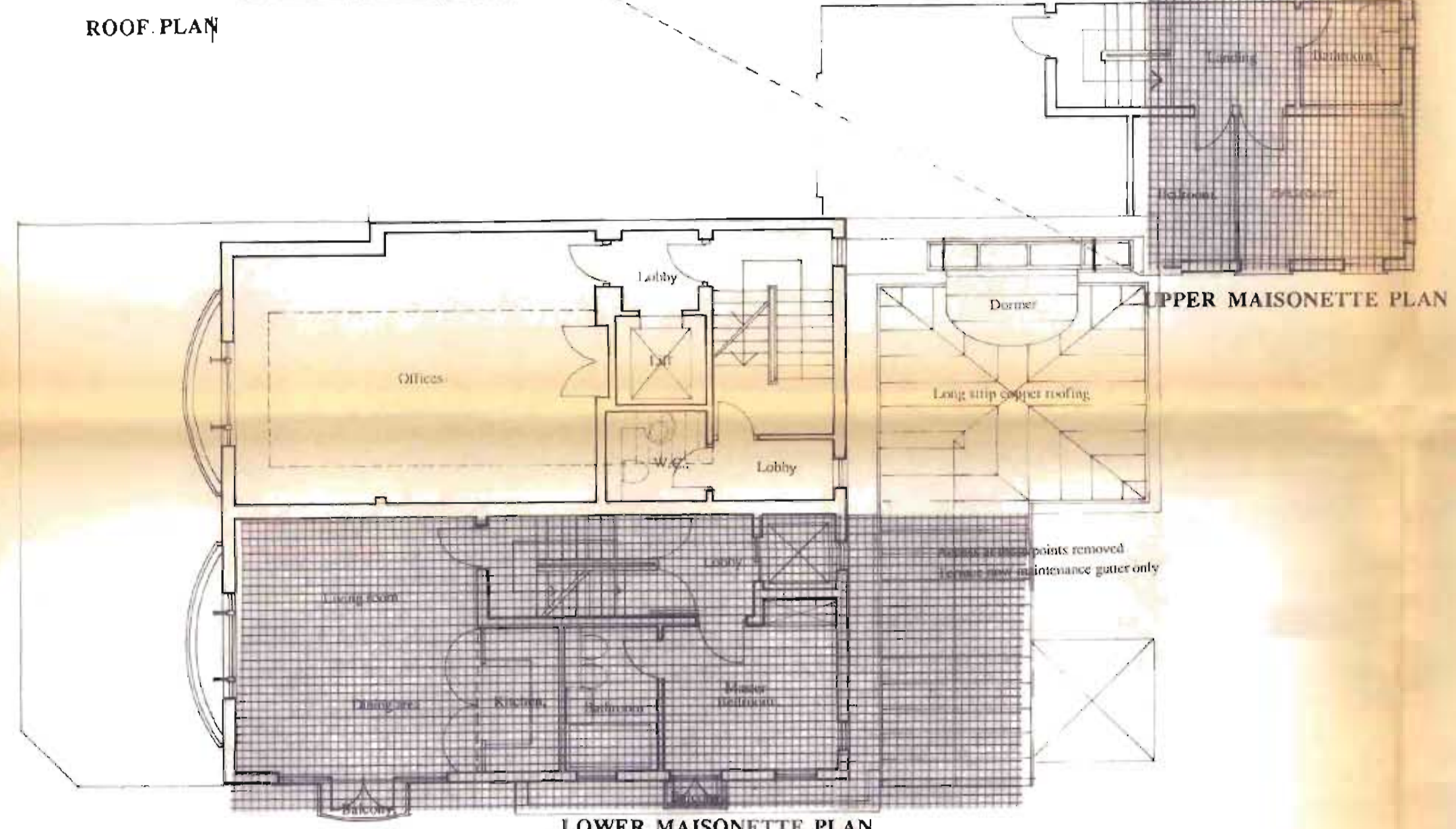


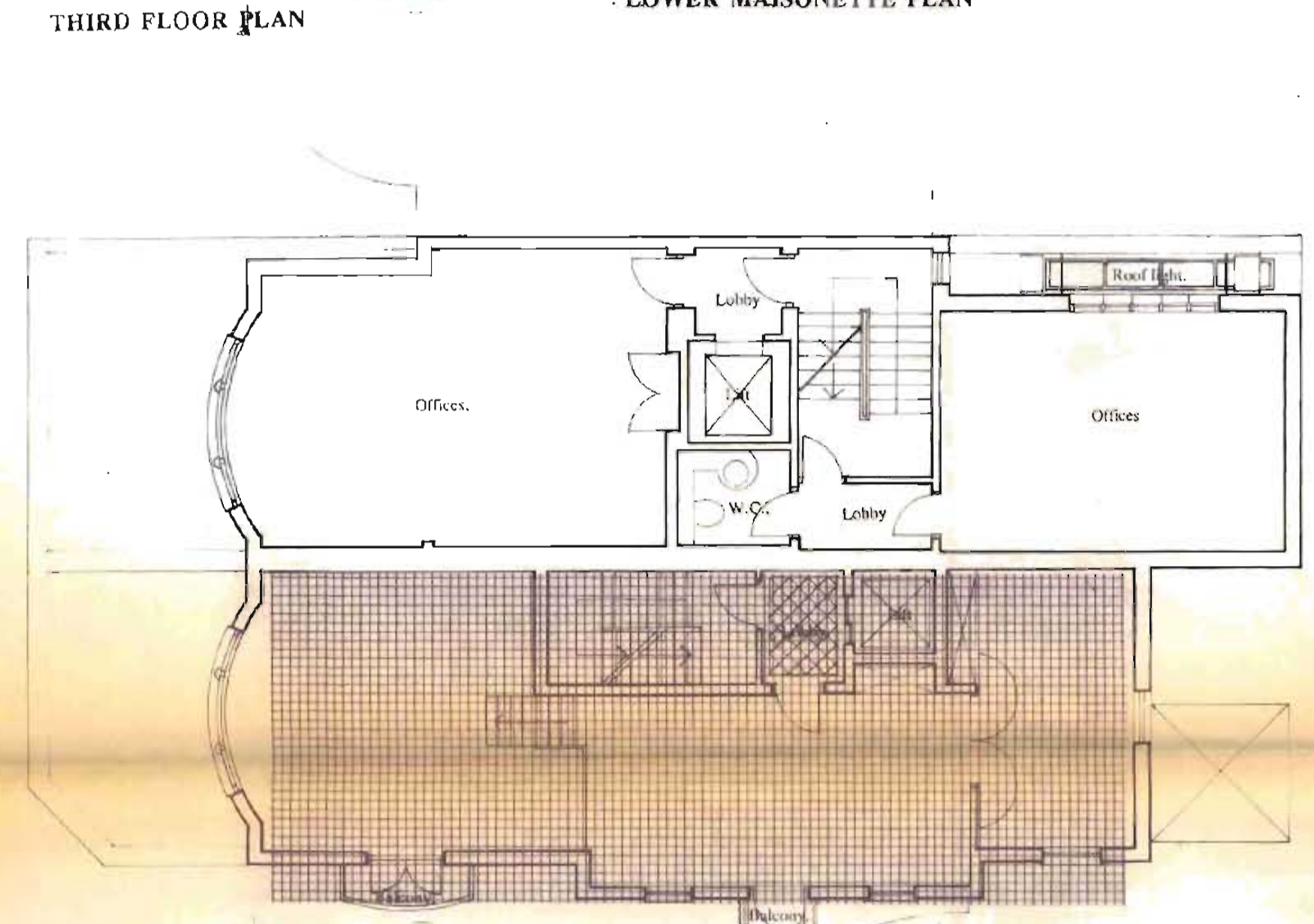
ROOF PLAN



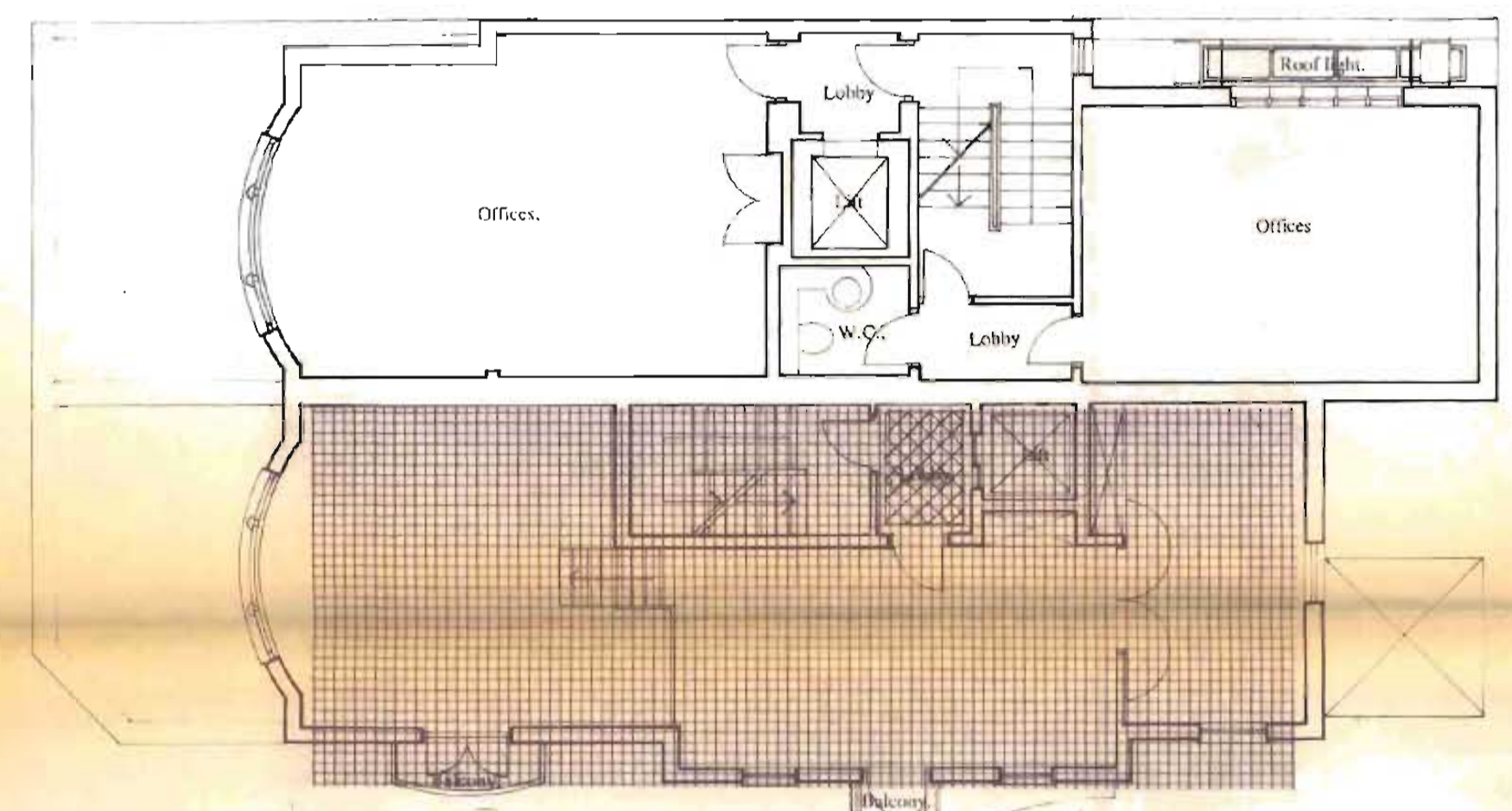
REAR ELEVATION



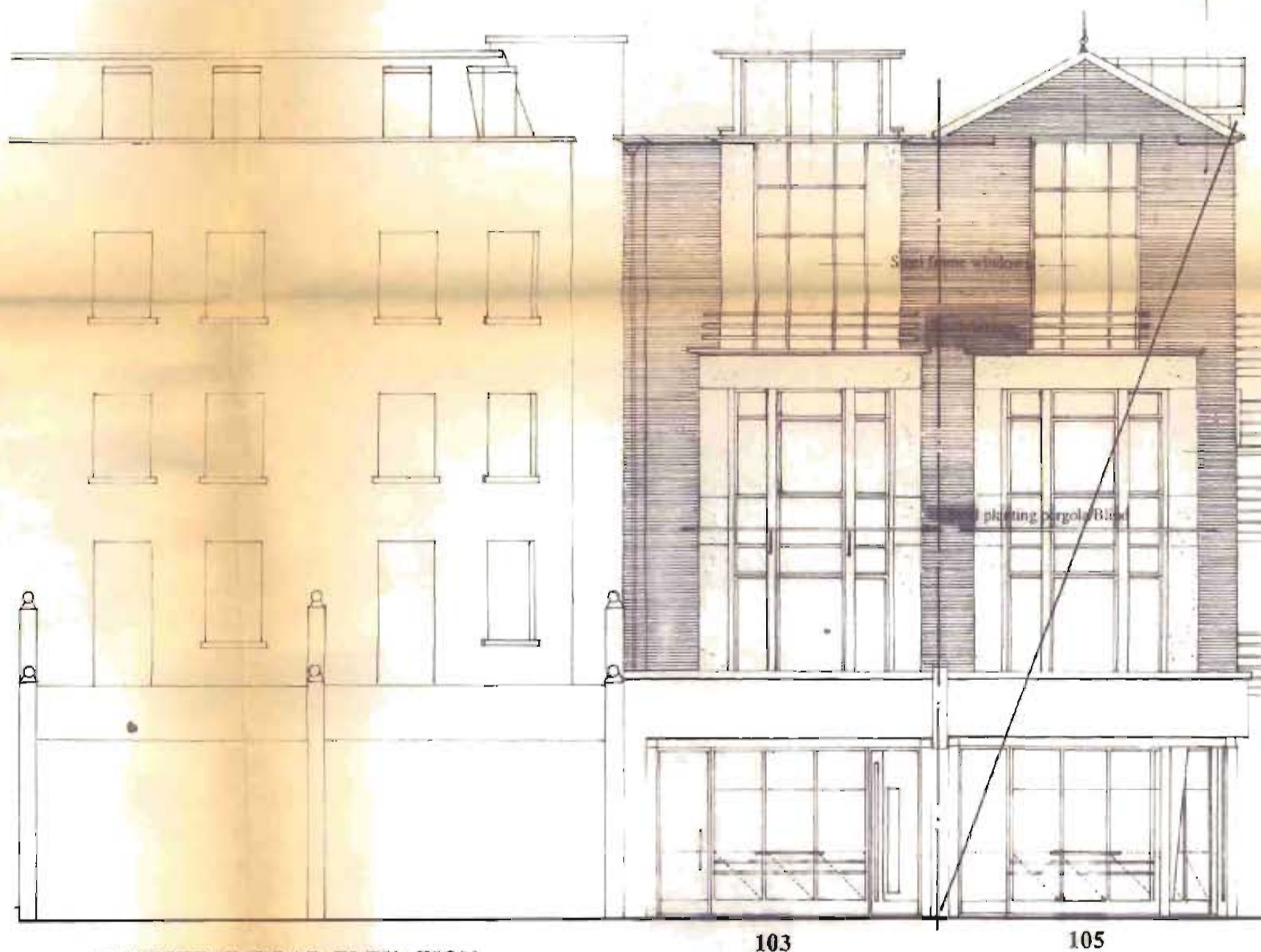
UPPER MAISONNETTE PLAN



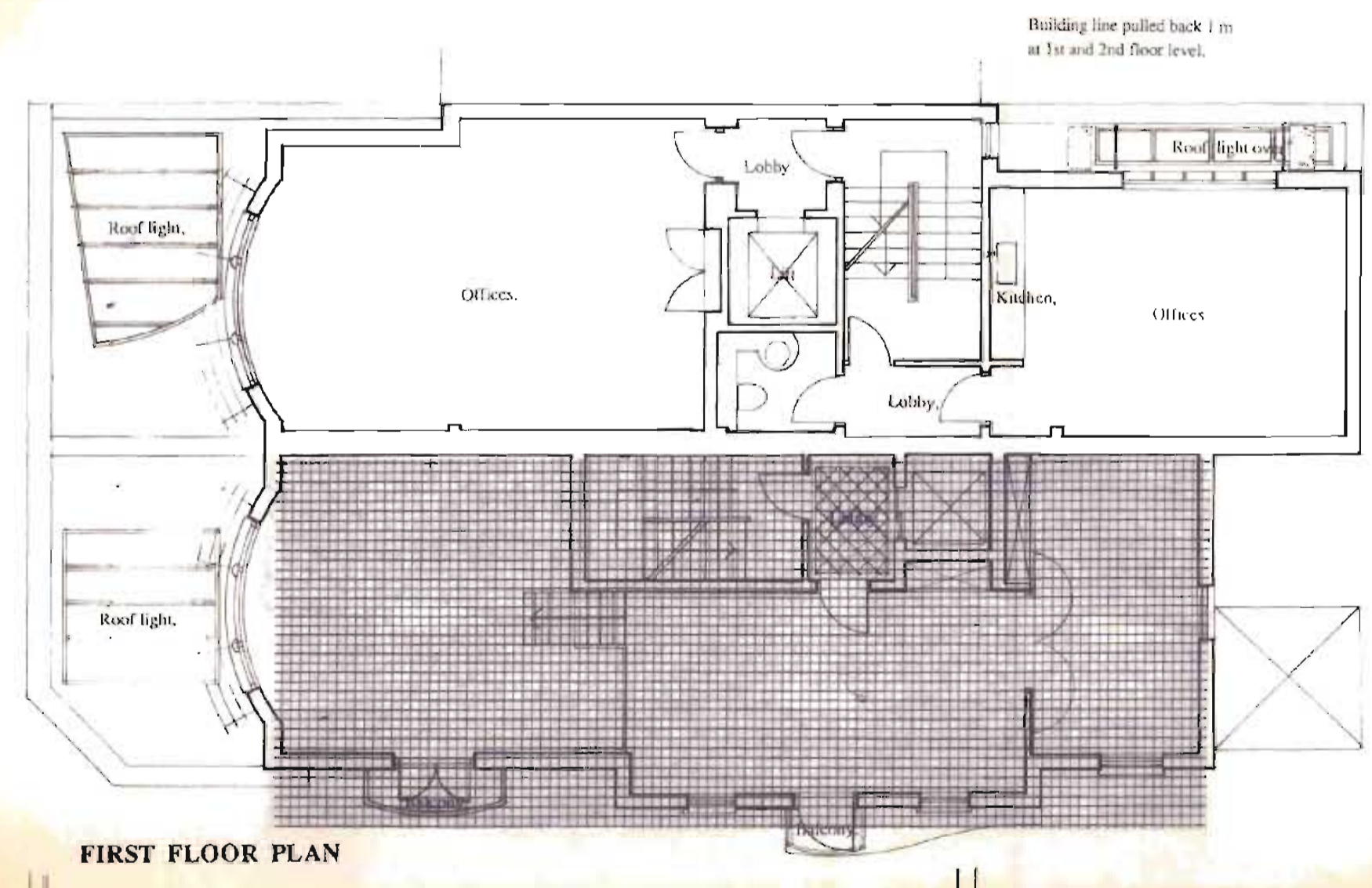
LOWER MAISONNETTE PLAN



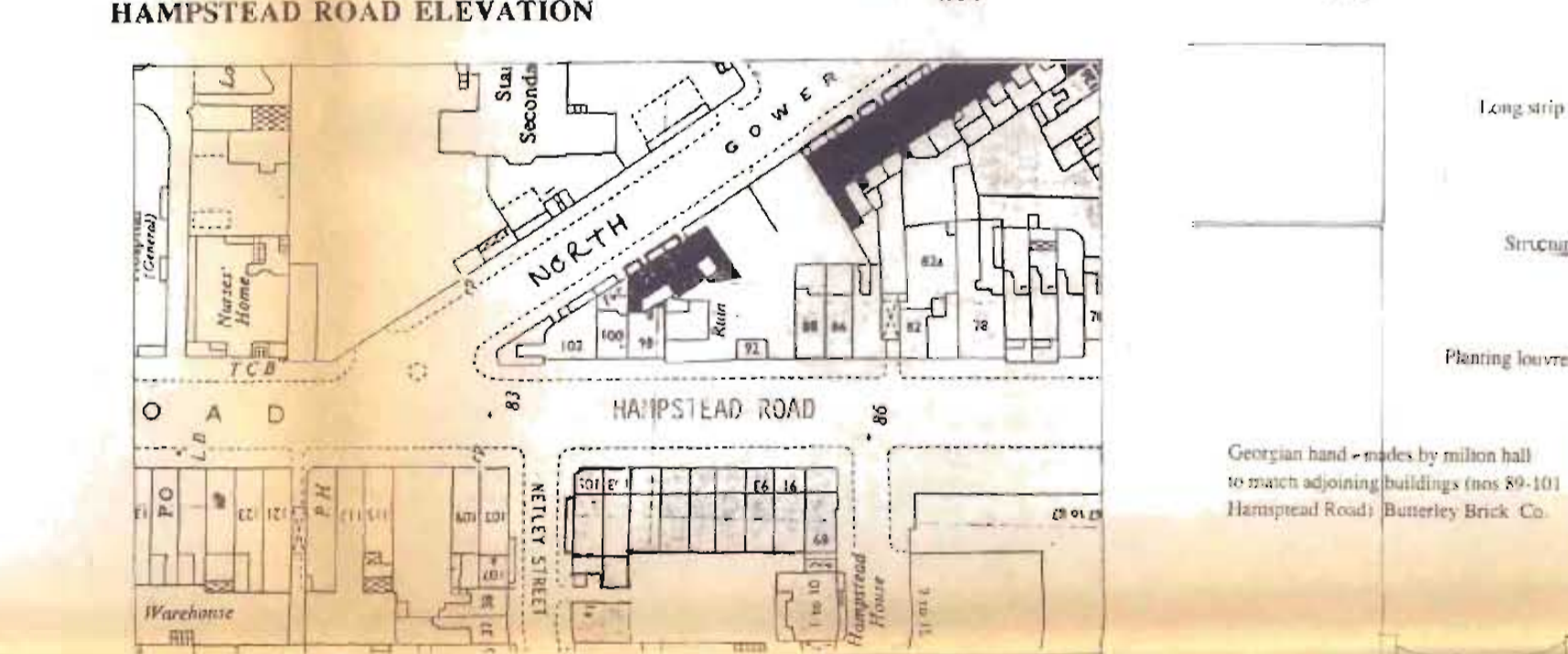
SECOND FLOOR PLAN



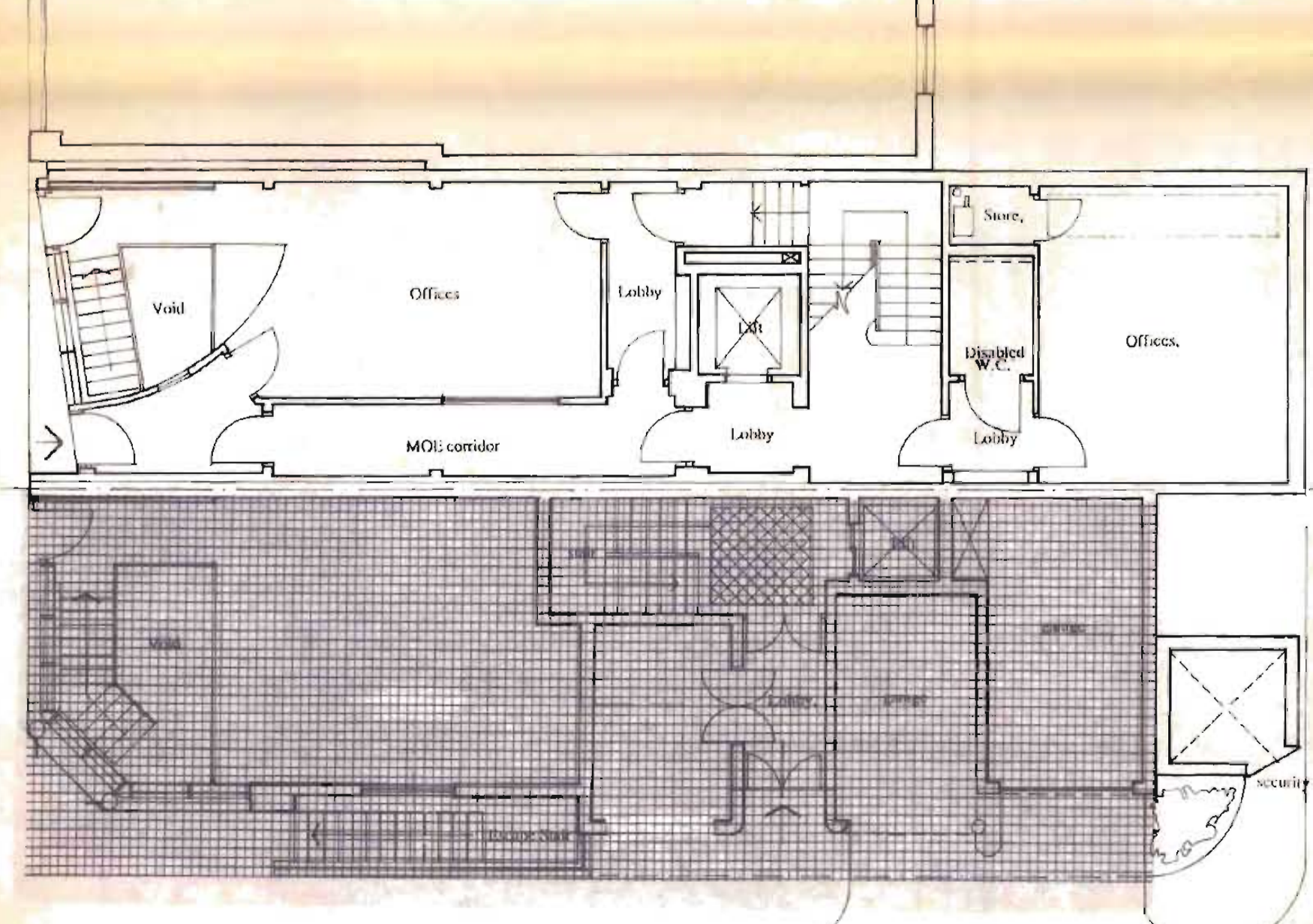
NETLEY STREET ELEVATION



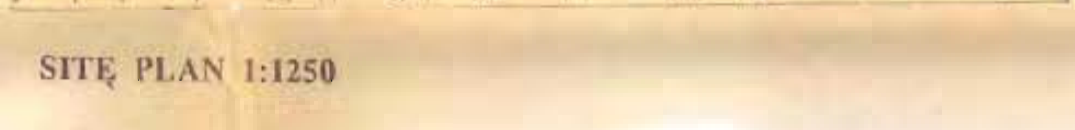
FIRST FLOOR PLAN



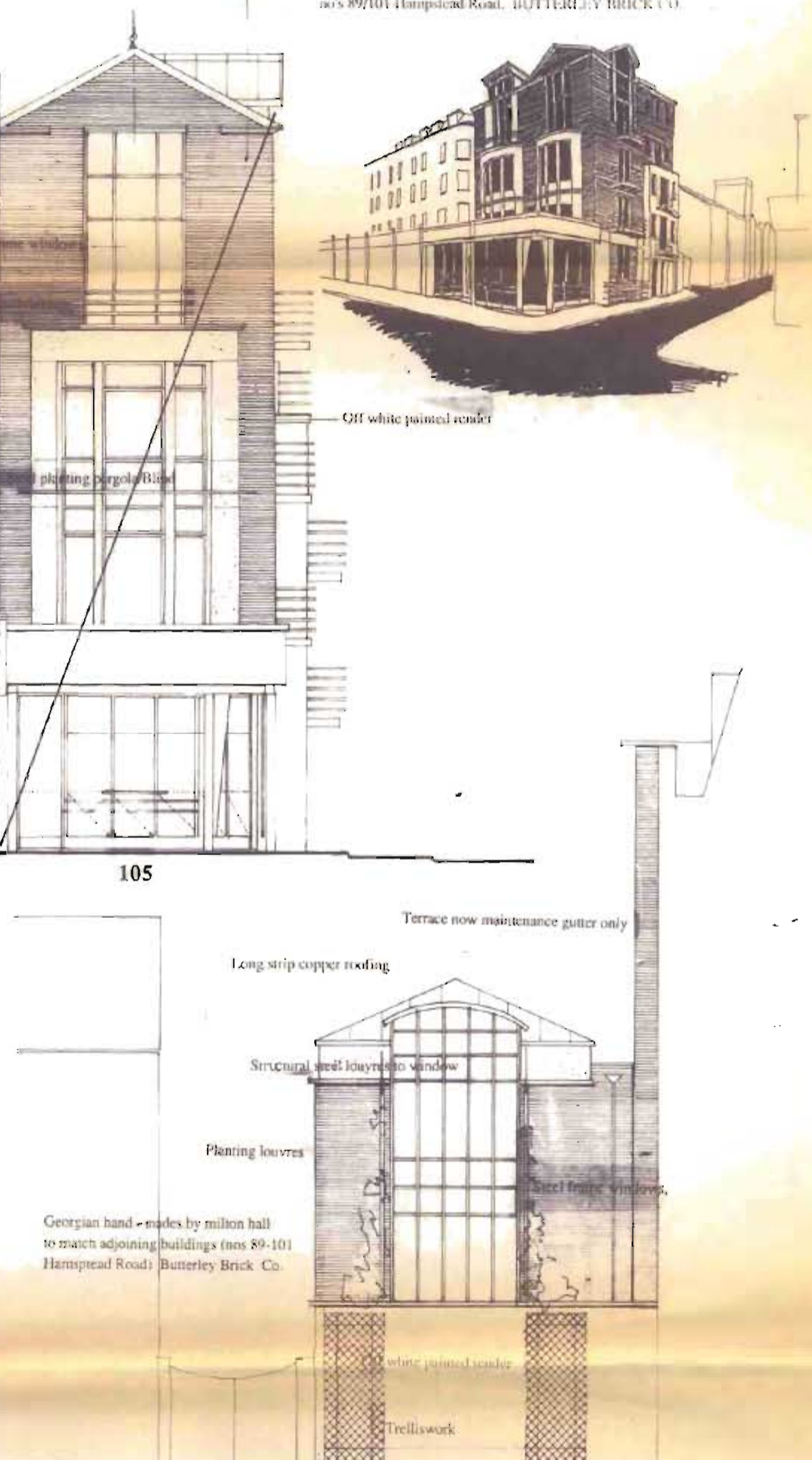
HAMPSTEAD ROAD ELEVATION



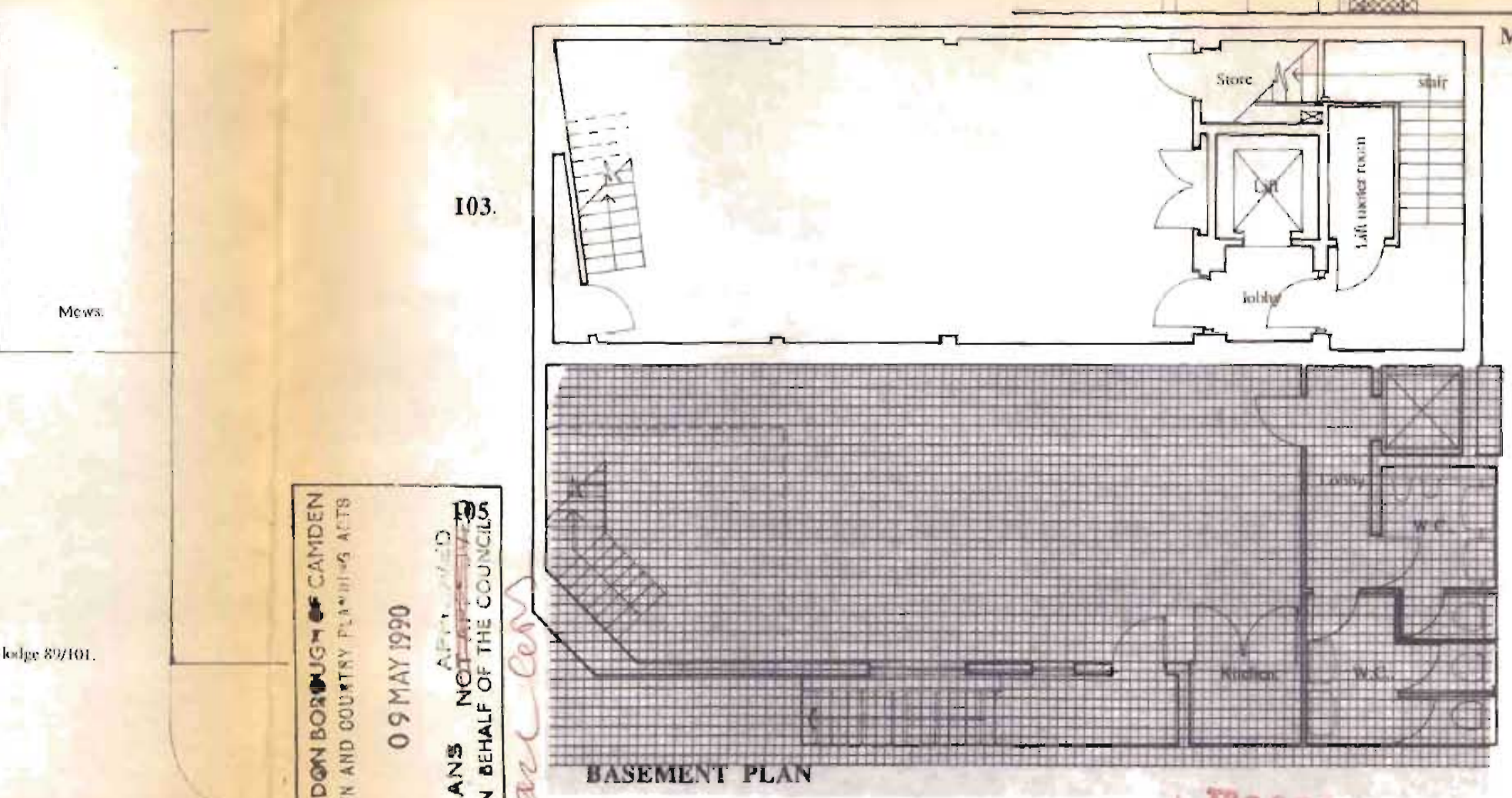
GROUND FLOOR PLAN



SITE PLAN 1:1250



MEWS REAR ELEVATION



BASEMENT PLAN

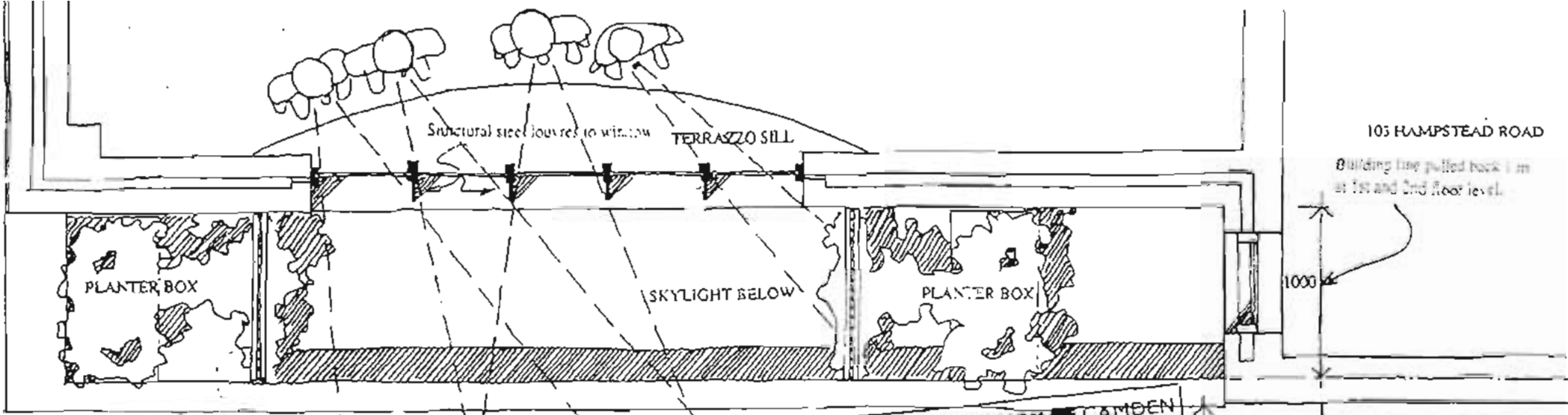
- A Rev. (i) Access to maintenance gutter removed - refer note (Former Terrace).
- (ii) Mews elevation revised. Building line moved back 1m. Structural steel louvers to windows. (All to removed overlooking problems 103.)
- (iii) Windows to ext. 103 rear elevation removed.

LONDON BOROUGH OF CAMDEN
TOWN AND COUNTRY PLANNING ACT 1990
09 MAY 1990
PLANS NOT APPROVED
ON BEHALF OF THE COUNCIL
S. G. G. G.

103/105 HAMPSTEAD ROAD
PLANS AND ELEVATIONS (PLANNING REV) MEWS ELEVATION
DATE DEC.1989
DRAWING NO. HR 90-01 103/105
SCALE 1:100
ALL DIMENSIONS TO BE CHECKED ON SITE
DO NOT SCALE
THIS DRAWING IS COPYRIGHT

LONDON BOROUGH OF CAMDEN
PLANNING AND TRANSPORT
DEPARTMENT
14 FEB 1990
RECEIVED





STAINLESS STEEL PRIVACY SCREEN & TRELIS
EXTENDING FROM LEVEL 1 TO LEVEL 2 CEILING

LONDON BOROUGH OF CAMDEN
TOWN AND COUNTRY PLANNING ACTS
09 MAY 1990
APPROVED
PLANS NOT APPROVED
ON BEHALF OF THE COUNCIL 1700
one copy


TYPICAL SIGHT ANGLES

TYPICAL SIGHT ANGLES

LONDON BOROUGH OF CAMDEN
PLANNING AND TRANSPORT
DEPARTMENT
14 FEB 1990
RECEIVED

TP9003076
FOR PACKAGE TENDER
INFORMATION 7.2.90

101 HAMPSTEAD ROAD

103 HAMPSTEAD ROAD			 3 6 . 3 7 CHARTERHOUSE SQUARE LONDON EC7A 6EA TEL 01-600 5151 FAX 01-600 1092 ARCHITECTS & DESIGNERS
PRIVACY SCREEN DETAIL			
DATE DEC 89	DWG NO HR 9003	NO 103	SCALE 1:20

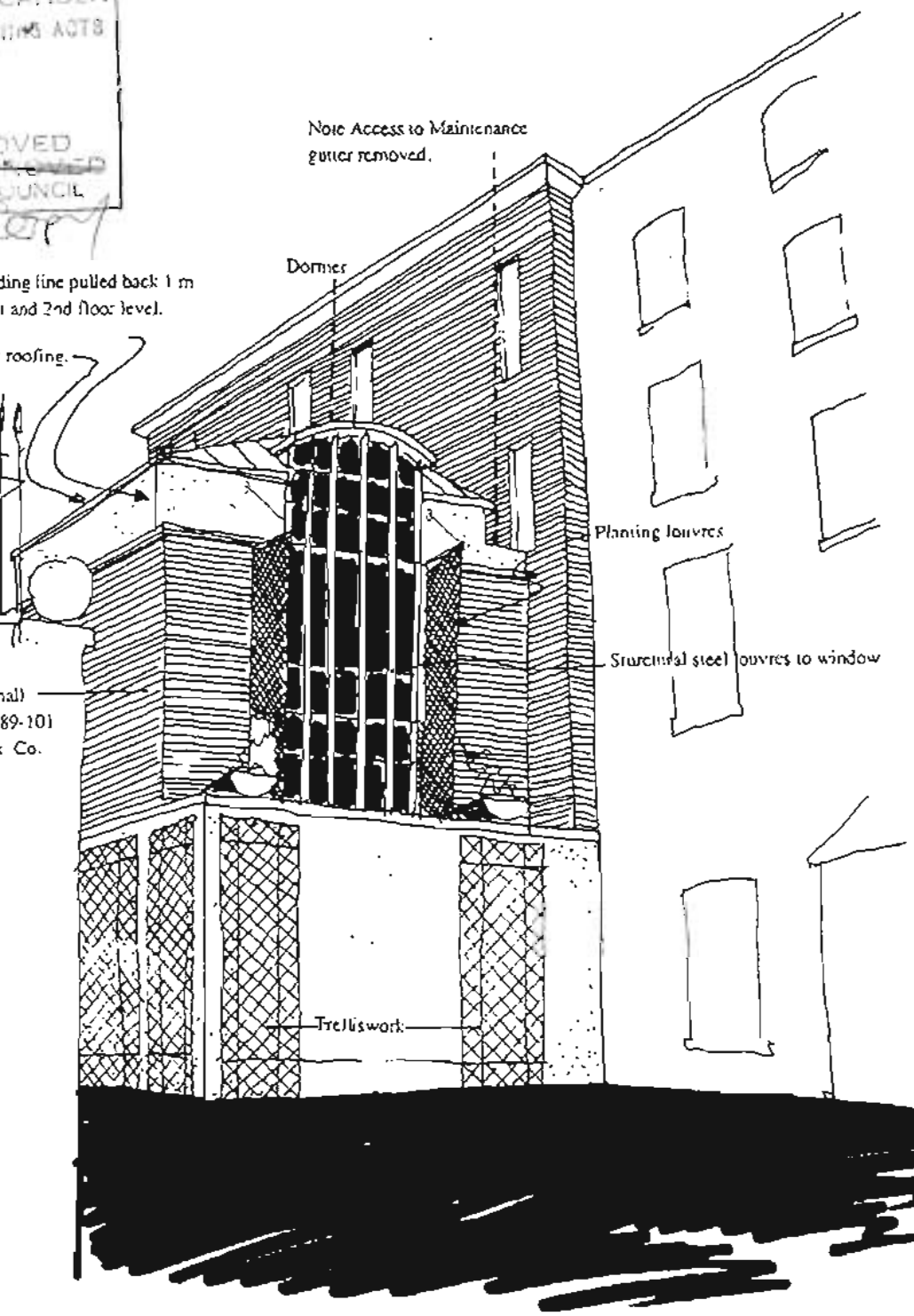

 3 6 3 7
 CHARTERHOUSE
 SQUARE
 LONDON EC4A 6EA
 TEL 01-600 5151
 FAX 01-600 1092
**HARPER
 MACKAY**
**ARCHITECTS
 & DESIGNERS**

LONDON BOROUGH OF CAMDEN
 TOWN AND COUNTRY PLANNING ACTS
 09 MAY 1990
 PLANS APPROVED
 NOT APPROVED
 ON BEHALF OF THE COUNCIL
Case copy

DEC 89. DRWG No HR 90 02 103.

LONDON BOROUGH OF CAMDEN
 PLANNING AND TRANSPORT
 DEPARTMENT
 14 FEB 1990
 RECEIVED

Building line pulled back 1 m
 at 1st and 2nd floor level.
 Long strip copper roofing.
 Georgian hand made bricks by Milton Hall
 to match adjoining buildings (nos 89-101
 Hampsstead Road) Butterley Brick Co.



- (i) Access to maintenance gutter removed - refer note (Former Terrace).
- (ii) Mews elevation revised. Building line moved back 1M. Structural steel louvres to windows. (A) to removed over/looking problems 101.)
- (iii) Windows to ext. 103 rear elevation removed.

179 003076