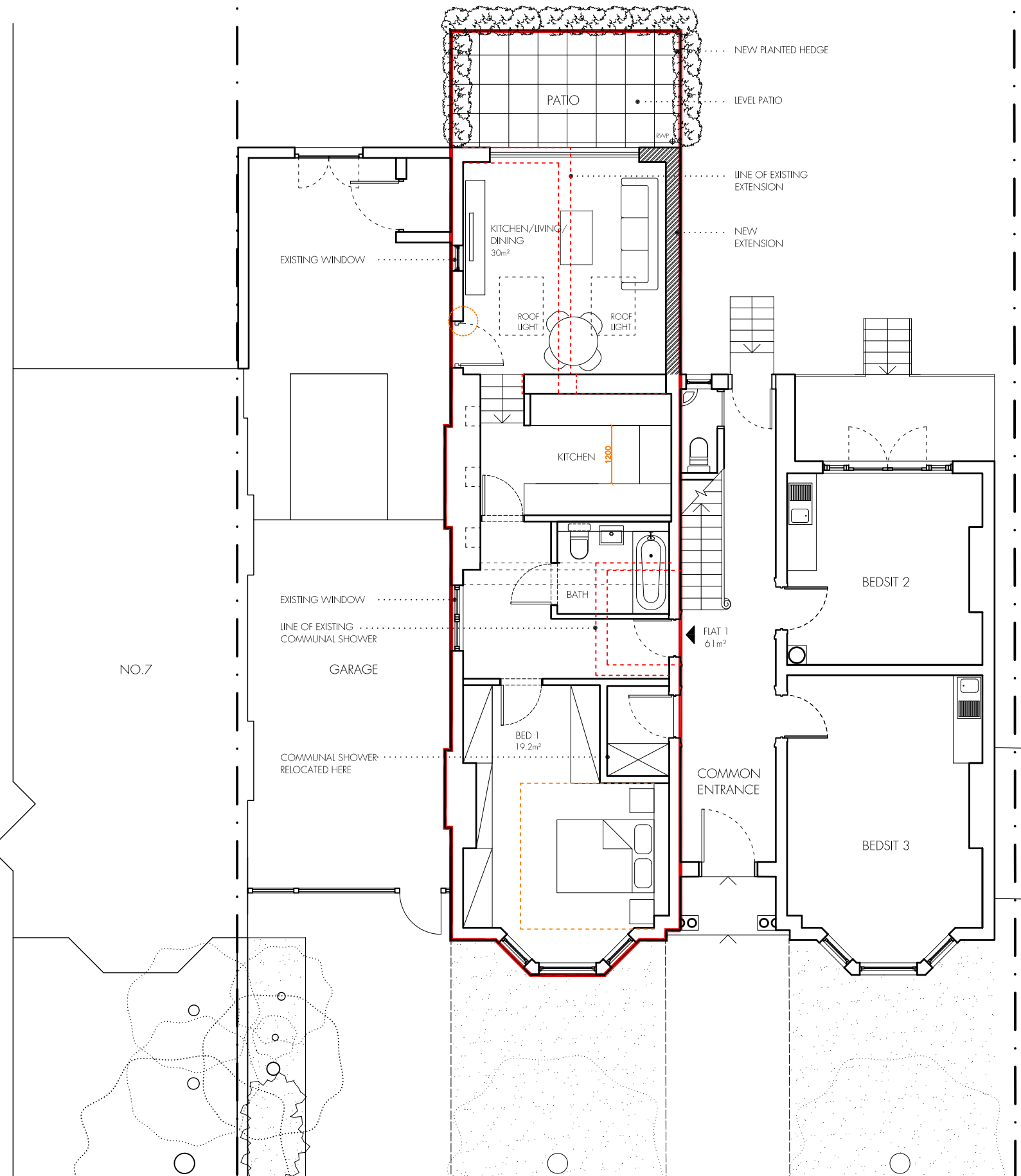


Do not scale off this drawing - All areas and dimensions are approximate and subject to site survey.
© copyright of tasou associates

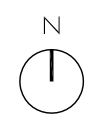


SITE BOUNDARY

NO.11

NO.7

APPLICATION BOUNDARY AREA : 90 sq.m



tasou
associates
architects + structural engineers

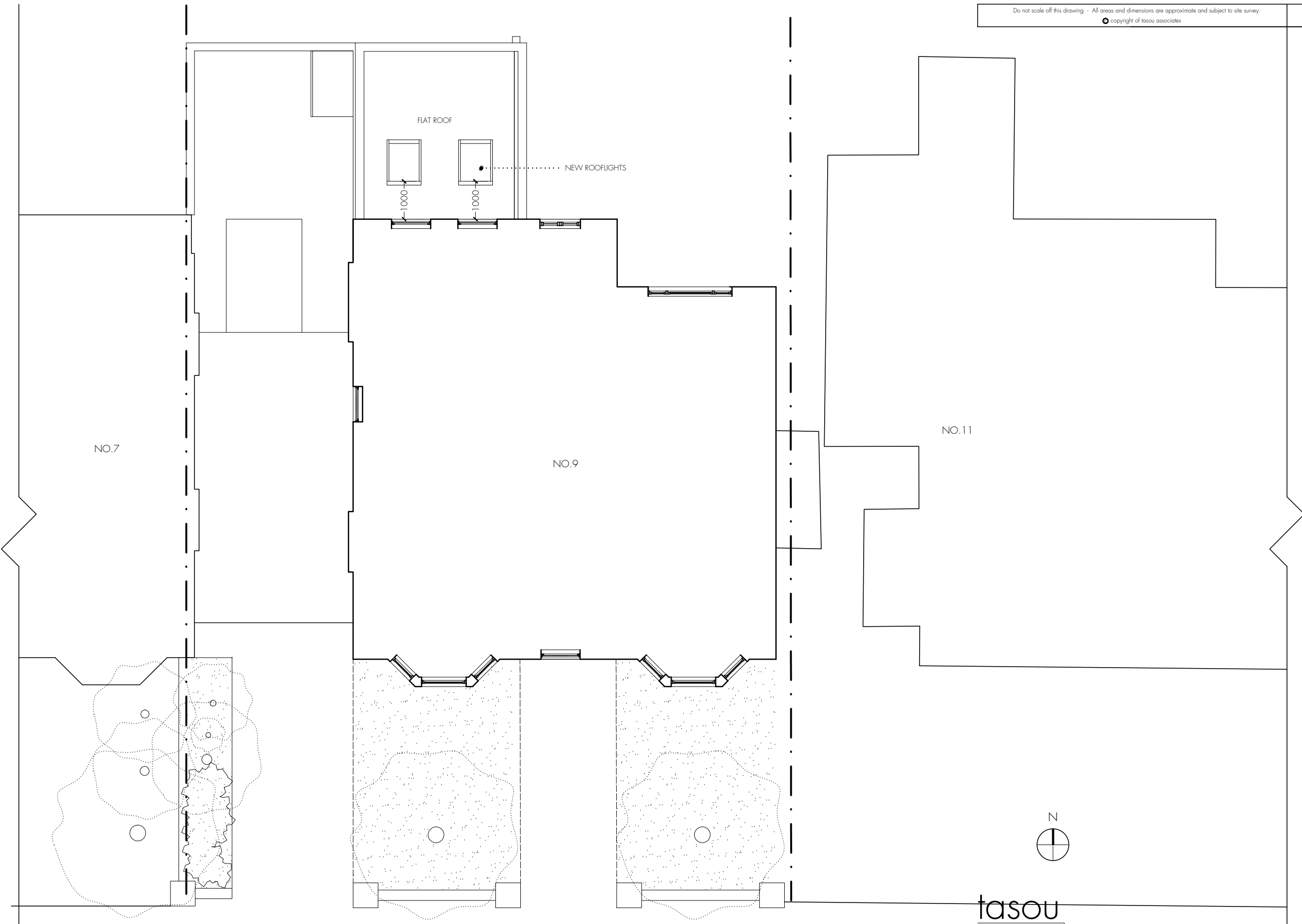
4 Amwell Street, London. EC1R 1UG T:020 7713 7070 F:020 7713 7071 E:tasou@tasou.co.uk



REVISION A / 30.08.2018 / BOUNDARY LINE UPDATE
 REVISION B / 04.10.2018 / PLANNING AMENDMENT
 REVISION C / 22.10.2018 / PLANNING AMENDMENT - 2 BED LAYOUT
 REVISION D / 29.10.2018 / ROOFLIGHT MOVED
 REVISION E / 21.12.2018 / REVISION TO LAYOUT

project 9 Woodchurch Road, NW6
 drwg title Proposed Ground Floor
 job no. 1228
 date August 2018
 drwg no. PP.01
 scale @ A3 1:100
 rev. E

Do not scale off this drawing - All areas and dimensions are approximate and subject to site survey.
© copyright of tasou associates



tasou
associates architects + structural engineers

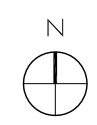
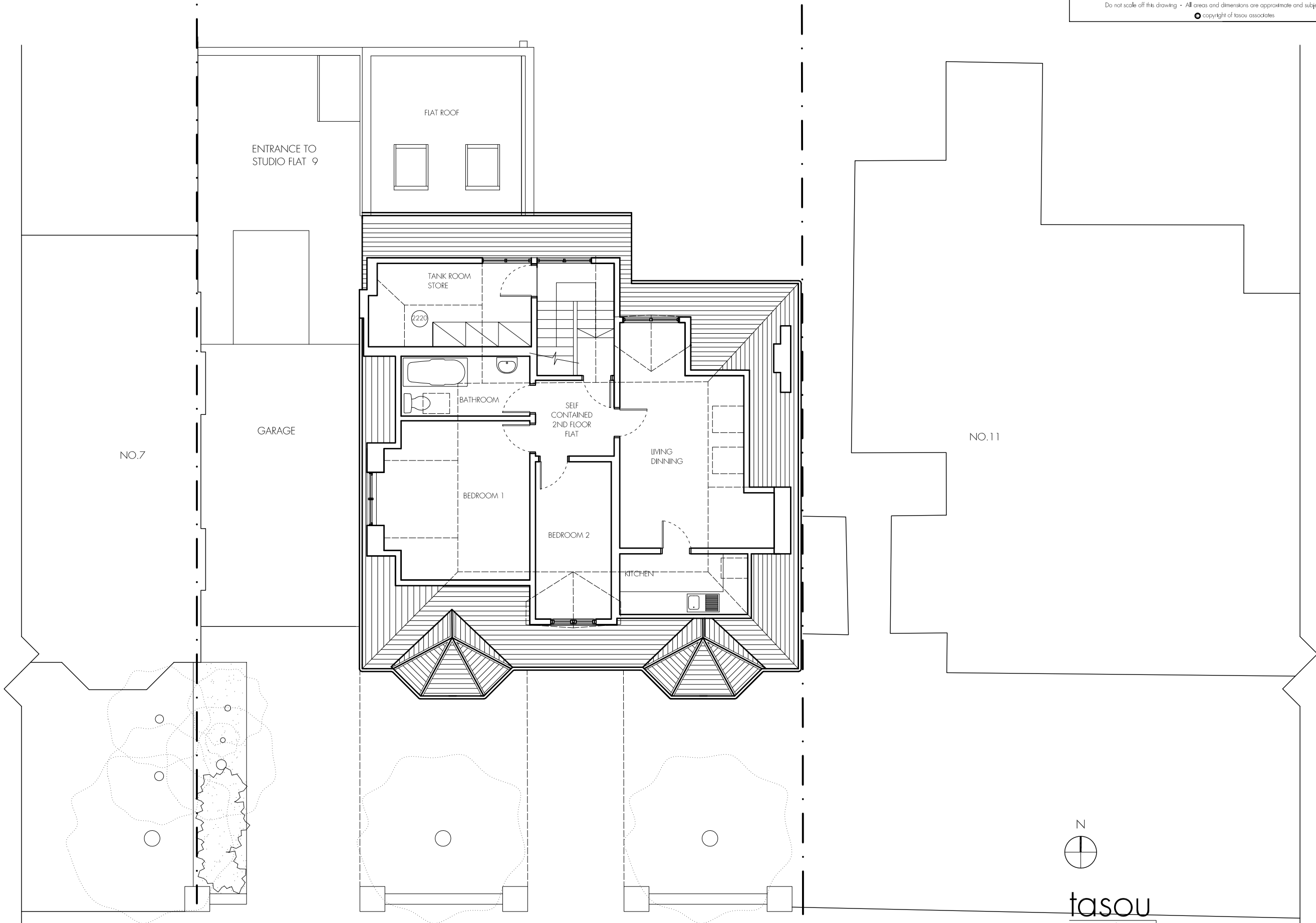
4 Amwell Street, London. EC1R 1UG T:020 7713 7070 F:020 7713 7071 E:tasou@tasou.co.uk



REVISION A / 04.010.2018 / PLANNING AMENDMENT
REVISION B / 29.10.2018 / ROOFLIGHT MOVED

project	9 Woodchurch Road, NW6		
dwg title	Proposed First Floor		
job no.	1228	dwg no.	PP.02
date	Nov 2014	scale @ A3	1:100
		rev.	B

Do not scale off this drawing - All areas and dimensions are approximate and subject to site survey.
© copyright of tasou associates



tasou
associates architects + structural engineers

4 Amwell Street, London. EC1R 1UG T:020 7713 7070 F:020 7713 7071 E:tasou@tasou.co.uk



REVISION A / 04.010.2018 / PLANNING AMENDMENT
REVISION B / 22.10.2018 / SECOND FLOOR
REVISION C / 29.10.2018 / ROOFLIGHT MOVED
REVISION D / 21.12.2018 / TANK ROOM STORE RETAINED

project	9 Woodchurch Road, NW6		
dwg title	Proposed Second Floor Plan		
job no.	1228	dwg no.	PP.03
date	Nov 2014	scale @ A3	1:100
		rev.	D



tasou
associates architects + structural engineers

4 Amwell Street, London. EC1R 1UG T:020 7713 7070 F:020 7713 7071 E:tasou@tasou.co.uk

project	9 Woodchurch Road, NW6		
dwg title	Proposed Front Elevation		
job no.	1228	dwg no.	PP04
date	Nov 2014	scale @ A3	1:100



REVISION A / 04.010.2018 / PLANNING AMENDMENT - BALUSTRADE
 REVISION B / 22.010.2018 / LOWER TERRACE

tasou
 associates architects + structural engineers

4 Amwell Street, London. EC1R 1UG T:020 7713 7070 F:020 7713 7071 E:tasou@tasou.co.uk

project	9 Woodchurch Road, NW6		
dwg title	Proposed Rear Elevation		
job no.	1228	dwg no.	PPO5
date	Nov 2014	scale @ A3	1:100
		rev.	B

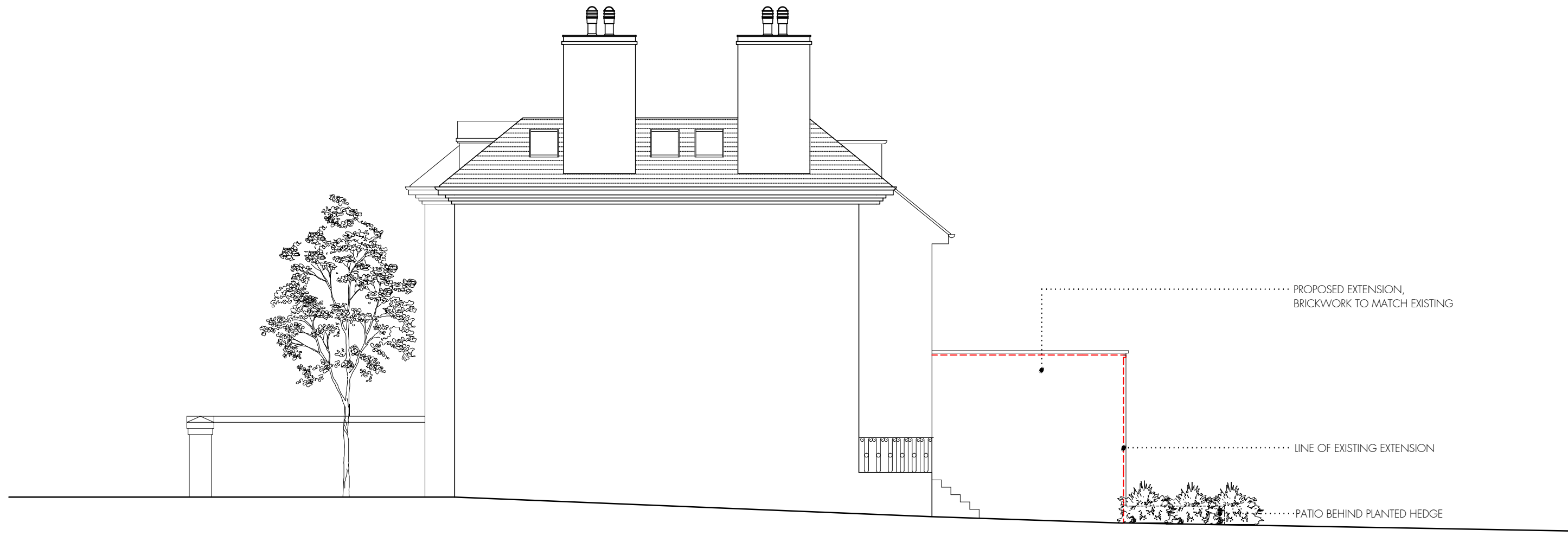


REVISION A / 22.10.2018 / PLANNING AMENDMENT

tasou
associates architects + structural engineers

4 Amwell Street, London. EC1R 1UG T:020 7713 7070 F:020 7713 7071 E:tasou@tasou.co.uk

project	9 Woodchurch Road, NW6				
drwg title	Proposed Side Elevation East				
job no.	1228	drwg no.	PPO6	rev.	A
date	Nov 2014	scale @ A3	1:100		



REVISION A / 22.10.2018 / PLANNING AMENDMENT

tasou
associates architects + structural engineers

4 Amwell Street, London. EC1R 1UG T:020 7713 7070 F:020 7713 7071 E:tasou@tasou.co.uk

project	9 Woodchurch Road, NW6		
dwg title	Proposed Side Elevation West		
job no.	1228	dwg no.	PP07
date	Nov 2014	scale @ A3	1:100
		rev.	A