

NOTES:

HVCA FOR DESIGN INTENT ONLY, CONTACT PROJECT MANAGER IF CHANGED.

PAINT ALL HVAC DUCTS & HVCA DIFFUSERS THE SAME COLOUR AS CEILING OR SOFFIT, TYPICAL THROUGHOUT RETAIL PORTION OF STORE.

ALL SUPPLY DUCTWORK FROM DUCTED UNITS TO BE INSULATED

ATMOSPHERIC SIDE OF DUCTWORK ASSOCIATED WITH HEAT RECOVERY UNITS TO BE INSULATED.

CONDENSATE PIPEWORK TO BE INSTALLED IN COPPER TUBE AND FITTINGS.

CONDENSATE FROM UNITS TO RUN BACK TO SVP, COMPLETE WITH TRAP.

THE CONTRACTOR IS TO DOWNLOAD AND READ THE LEED AND OR BREEAM MANUALS. ATTEND THE VARIOUS RELEVANT BREEAM MEETINGS AND PROVIDE THE REQUIRED DOCUMENTATION AT THE DESIGN STAGE AND CONSTRUCTION. THE DOCUMENTS WILL BE DOWNLOADED ONTO BUZZSAW AS REQUIRED BY THE ASSESSOR.

THE CONTRACTOR IS TO PROVIDE AN INDOOR AIR QUALITY MANAGEMENT PLAN (IAQMP) BEFORE CONSTRUCTION. PHOTOGRAPHIC EVIDENCE IS REQUIRED TO SHOW THE IAQMP HAS BEEN IMPLEMENTED AND DOWNLOADED ONTO BUZZSAW.

THE CONTRACTOR IS TO EMPLOY A QUALIFIED ENERGY ASSESSOR TO PROVIDE AN EPC AND OR PART L COMPLIANCE REPORT ON COMPLETION OF THE PROJECT.

THE CONTRACTOR IS TO EMPLOY A COMMISSIONING ENGINEER FROM THE DESIGN STAGE TO A YEAR AFTER COMPLETION OF THE PROJECT. DUTIES TO INCLUDE COMMENTING ON THE HVAC DESIGN, OVERSEE THE COMMISSIONING AND HANDOVER, OVERSEE AND COMMENT OF THE SEASONAL COMMISSIONING POST HANDOVER.

THE HVAC DESIGNER WILL UNDERTAKE THERMAL MODELING TO DEMONSTRATE THERMAL COMFORT LEVELS CAN BE ACHIEVED.

THE DUCTWORK DESIGN SHALL MEET WITH THE REQUIREMENTS OF DW14 MEDIUM CLASS 'B'.

BUILDING USER GUIDE BY CONTRACTOR AS APPENDIX A TO BE FORWARDED TO ASSESSOR.

LOW GWP & ZERO GREEN EMBODIED IMPACT INSULATION TO BE PROVIDED AS PER THE 'GREEN GUIDE' TO SPECIFICATION RATINGS.

DIGITAL AIR SOURCE HEAT PUMPS TO BE A/A RATED.

ZONING CONTROLS

- a) SEATING AREA WITH DEDICATED TOSHIBA 7 DAY PROGRAMMABLE TEMPERATURE CONTROLLER
- b) REAR AREA WITH DEDICATED TOSHIBA 7 DAY PROGRAMMABLE TEMPERATURE CONTROLLER

CL = CENTRE LEVEL
IL = INVERT LEVEL

COMMISSIONING

1. VOLUME FLOW RATE FROM EACH GRILLE TO BE MEASURED AND CONFIRMED
2. COOLING AND HEATING TEMPERATURE TO BE CONFIRMED INCLUDING OUTSIDE AIR TEMPERATURE, ROOM TEMPERATURE AND GRILLE/DIFFUSER TEMPERATURE
3. TEMPERATURES TO BE SET TO 22°C
4. REFER TO COMMISSIONING LEED DOCUMENT (11 PAGES)
5. ALL EXTRACT FANS OPERATE ON A TIMECLOCK. THE TOILET EXTRACT SHALL RUN OFF A PIR.
6. THE TOILET EXTRACT FANS SHALL OVERRUN FOR 10MINS.
7. EACH WC PIR IS TO BE LINKED TO ALLOW A COMMON START SIGNAL TO EACH TOILET EXTRACT FAN.

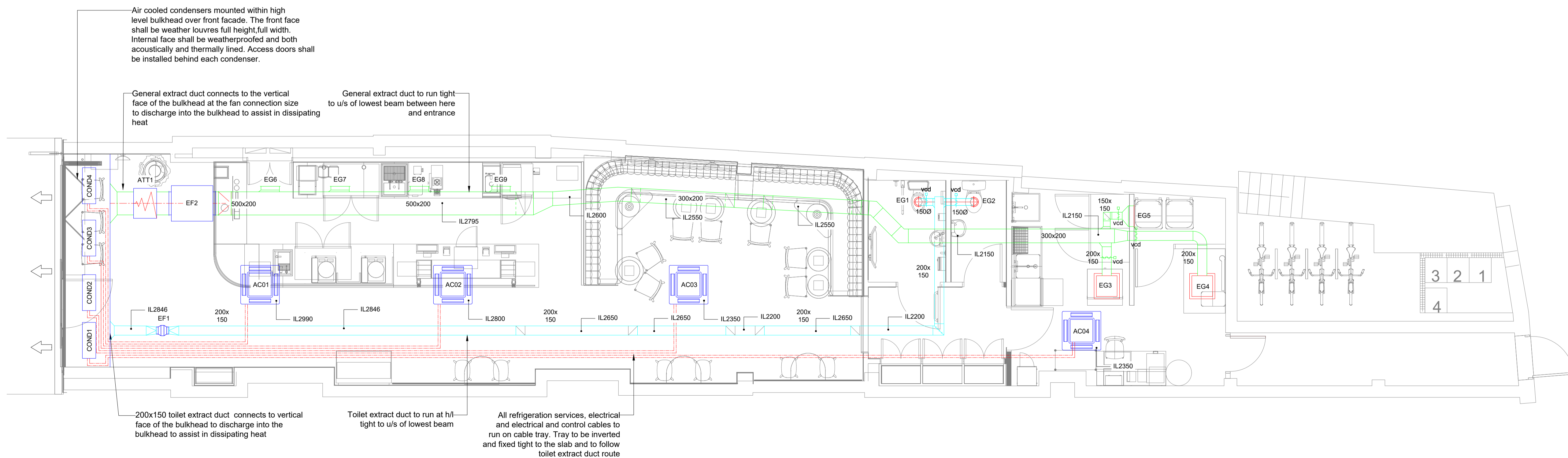
HEAT PUMP SELECTION				
UNIT REF	MANUFACTURER REFERENCE INDOOR/OUTDOOR	TOTAL COOLING CAPACITY	ELECTRICAL SUPPLY	AIR VOLUME H/M/L - l/s
AC01-COND1	RAV-RM801UTP-E/RAV-GM801ATP-E	6.7 kW	1 PHASE/10.4A FLC	342/267/225
AC02-COND2	RAV-RM801UTP-E/RAV-GM801ATP-E	6.7 kW	1 PHASE/10.4A FLC	342/267/225
AC03-COND3	RAV-RM801UTP-E/RAV-GM801ATP-E	6.7 kW	1 PHASE/10.4A FLC	342/267/225
AC04-COND4	RAV-RM561UTP-E/RAV-GM561ATP-E	5.6 kW	1 PHASE/7.3A FLC	292/242/217

EXTRACT FAN SELECTION			
UNIT REF	MANUFACTURER REFERENCE	CAPACITY	ELECTRICAL DATA
EF01	VENT AXIA ACM150 T	100 l/s @ 100Pa	0.18kW / 0.79 FLC / 3.2 SC 1 PHASE
EF02	VENT AXIA SLP500EC	450 l/s @ 200Pa	0.16kW / 2.0 FLC / 2.1A SC 3 PHASE

ATTENUATOR SELECTION			
UNIT REF	MANUFACTURER REFERENCE	CAPACITY	COMMENTS
ATT01	CONABEARE ACOUSTICS 500ACP-1D	450 l/s @ 10Pa	

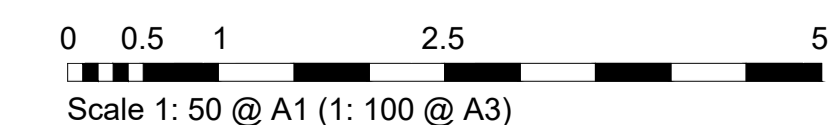
ANTI VIBRATION MOUNTINGS SELECTION			
UNIT REF	MANUFACTURER REFERENCE	CAPACITY	COMMENTS
AVM1-AVM20	ISOLATED SYSTEMS MPO GREEN	11 kg	
HANGERS	ISOLATED STSTEMS RS-CH/1A	15 kg	4 No

EXTRACT GRILLE SELECTION					
GRILLE REF	GRILLE TYPE	GRILLE SIZE	CONNECTION SIZE	VOLUME	COMMENTS
EG1-EG2	AIR VALVE GX	100Ø	100Ø	30 l/s	STANDARD FINISH RAL9010
EG3-EG4	GECA-RC	450x450	150Ø	80 l/s (each)	STANDARD FINISH RAL9010
EG5	GECA-RC	500x250	150Ø	50 l/s (each)	STANDARD FINISH RAL9010
EG6-EG9	515N/RC 19mm FLANGE	400x150	400x150 SPIGOT	60 l/s (each)	C/W OBD



1 GROUND FLOOR - HVAC DESIGN PLAN

Scale: 1 : 50



©2011 Starbucks Coffee Company

Starbucks Coffee Company

Building 4, Chiswick Park
566 Chiswick High Road
London, W4 5YE

These Drawings and Specifications are confidential and shall remain the sole property of Starbucks Corporation, which is the owner of the copyright in this work. They shall not be reproduced (in whole or in part), shared with third parties or used in any manner on other projects or extensions to this project without the prior written consent of Starbucks Corporation. These drawings and specifications are intended to express Design Intent for a prototypical Starbucks store (which is subject to change at anytime) and do not reflect actual site conditions. Neither party shall have any obligation nor liability to the other (except as stated above) until a written agreement is fully executed by both parties.

Architect of Record

Evolve Architecture
The Coach House
Grange Business Park
Hewish Bristol BS24 6RR



Revision Schedule

Rev	Date	By	Description
1.0	19.07.18	PN	Ductwork amended to follow building fabric contours
2.0	30.08.18	PN	Ductwork amended to following site discussions and client comments
3.0	16.10.18	PN	Dust attenuator added, schedules added
4.0	10.12.18	SH	New Xref received

CONSTRUCTION DRAWING SET

Project Name:
KENTISH TOWN
Project Address:
**325 KENTISH TOWN ROAD,
KENTISH TOWN, LONDON
NW5 2TJ**

Store #: 55927
Project #: 6138
Concept:
Palette:
Issue Date: 06.07.18
Design Manager:
Project Designer:
Production Designer:
Checked by:

Sheet Title:
HVAC DESIGN PLAN

Scale: 1 : 50

Sheet Number:
55927-M-1101 Rev 4.0