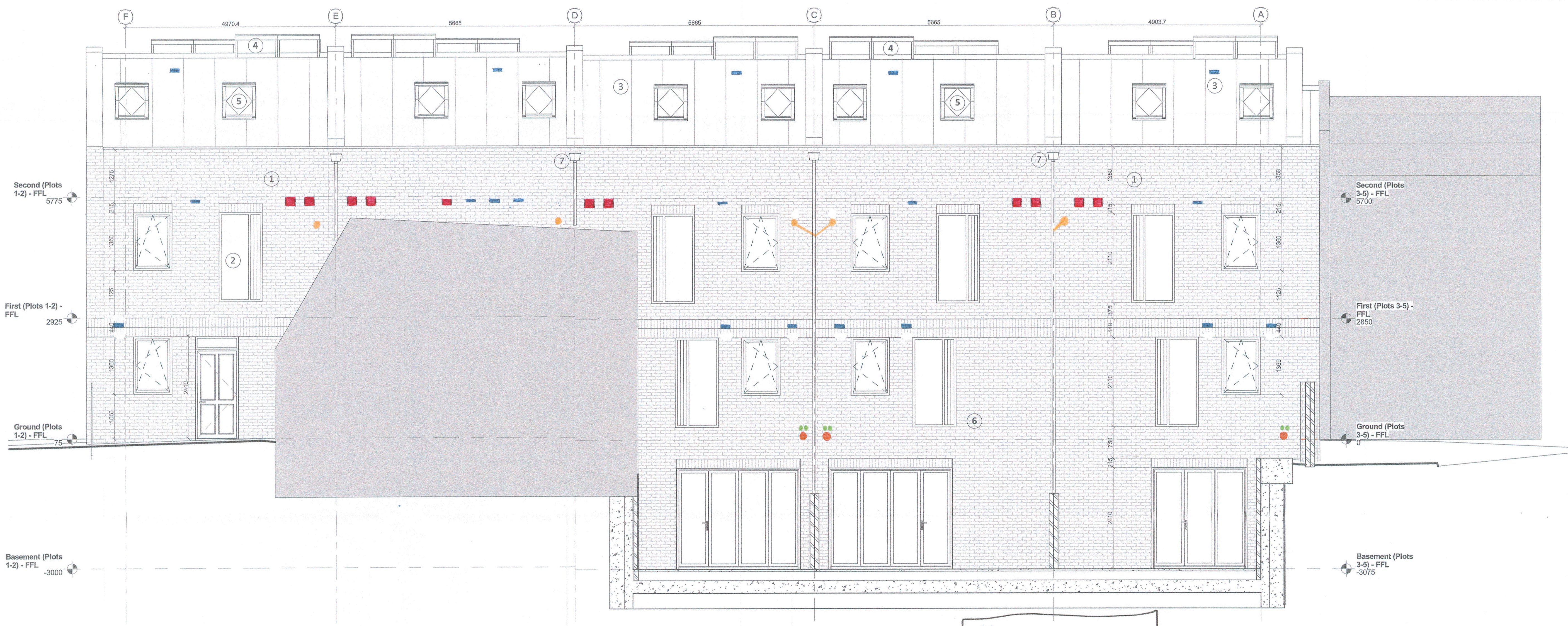


- NOTES:
1. ALL DIMENSIONS IN MILLIMETRES, UNLESS OTHERWISE STATED.
 2. THIS DRAWING TO BE READ IN CONJUNCTION WITH THE SPECIFICATION AND ALL OTHER CONTRACT DRAWINGS.

- Key to Proposed Materials :**
1. Fair faced brickwork - Smeed Dean Weathered Yellow with natural mortar.
 2. Aluminium slimline profile window units - RAL 9005 (Jet Black).
 3. Zinc metal roofing & facade system - PrePATINA Blue-Grey colour (Rheinink or equal).
 4. Approximate location of PV panels
 5. Velux Conservation or similar black rooflights.
 6. Glazed translucent privacy screen.
 7. Aluminium rain water pipes & hoppers, Colour RAL 9005 (Jet Black).
 8. Hardwood timber front entrance door - sweet chestnut colour.
 9. Horizontal fixed louvred hardwood timber privacy screen - sweet chestnut colour.
 10. Vertical hardwood timber openable sidelight - sweet chestnut colour.
 11. Reconstructed stone parapet capping.



North West Back of Basement
1:50

ELEVATION SKETCH
CALFORDSEADEN M&E
ASHTON COURT (K160624)
R.H.

Revised calfordseaden Arch (K160423) rev2.
16.10.18
BPH.

KEY

- Boiler flue.
- Built-in meter box (Gas)
- SVP
- High capacity air-brick
- RAINWATER PIPE
- CAVITY DRAINAGE PIPE.
- Additional air bricks for background ventilation.

REV	DESCRIPTION	DATE	INIT	CHKD

calfordseaden

Client: Rydon Construction Ltd
 Project: Ashton Court, Camden Park Road, Camden
 Title: Elevation (Sheet 3)
 Scale: As Indicated | Date: 13.03.18 | Drawn By: MA | Checked By: BPH | Project No: K160423 | Drawing No: Revision A(2)1302

St John's House 1a Knoll Rise Orpington Kent BR6 0JX
 01689 388222 orpington@calfordseaden.com
 calfordseaden LLP is a Limited Liability Partnership Registered in England & Wales number OC135888
 ORPINGTON ■ LONDON ■ BIRMINGHAM ■ SOUTHEND ■ WINCHESTER ■ CAMBRIDGE

calfordseaden.com

CONSTRUCTION