

January 2018



Rytons Background Room Ventilators

Technical information available from our website at:

www.vents.co.uk

Alternatively, call us on 01536 511874



Contents

Product Name	Product Code	Equivalent Area	$D_{n,e,w}$ Sound Reduction (open/closed)	Page
Rytons Super Acoustic Controllable LookRyt® AirCore®	AAC125HP	8,500mm ²	43 dB / 50 dB	4-5
Rytons Cowled Super Acoustic Controllable LookRyt®	AAC125HPCWL	8,400mm ²	45 dB / 50 dB	4-5
Rytons High Rise Super Acoustic Controllable LookRyt®	AAH125HP	7,700mm ²	44 dB / 50 dB	4-5
Rytons Controllable LookRyt® AirCore®	AC10HP	7,500mm ²	Unsilenced	4-5
Rytons Cowled Controllable LookRyt® AirCore®	AC10HPCWL	7,300mm ²	Unsilenced	4-5
Rytons Baffled Controllable LookRyt® AirCore®	AC7HP	6,500mm ²	Unsilenced	4-5
Rytons Cowled Baffled Controllable LookRyt® AirCore®	AC7HPCWL	6,700mm ²	Unsilenced	4-5
Rytons High Rise Controllable LookRyt® AirCore®	ACH75HP	6,700mm ²	Unsilenced	4-5
Rytons '9x3' Acoustic AirLiner® Set with Hit & Miss	TAL4H&M	6,300mm ²	38 dB / 39 dB	7
Rytons '9x3' Cowled Acoustic AirLiner® Set with Hit & Miss	TAL4HMCWL	6,300mm ²	39 dB / 40 dB	7
Rytons '9x3' Ventilation Set with Hit & Miss	TC8H&M	10,200mm ²	Unsilenced	7
Rytons '9x3' Cowled Ventilation Set with Hit & Miss	TC8HMCWL	10,000mm ²	Unsilenced	7
Rytons '9x6' Acoustic AirLiner® Set with Hit & Miss	TALH&M	10,500mm ²	39 dB / 40 dB	8
Rytons '9x6' Cowled Acoustic AirLiner® Set with Hit & Miss	TALHMCWL	9,800mm ²	42 dB	8
Rytons '9x6' Ventilation Set with Hit & Miss	TC18HM	19,800mm ²	Unsilenced	8
Rytons '9x6' Cowled Ventilation Set with Hit & Miss	TC18HCWL	18,000mm ²	Unsilenced	8
Rytons '9x9' Acoustic AirLiner® Set with Hit & Miss	TAL9H&M	12,800mm ²	38 dB	9
Rytons '9x9' Cowled Acoustic AirLiner® Set with Hit & Miss	TAL9HMCWL	12,700mm ²	40 dB / 41 dB	9
Rytons '9x9' Ventilation Set with Hit & Miss	TC20HM	30,000mm ²	Unsilenced	9
Rytons '9x9' Cowled Ventilation Set with Hit & Miss	TC20HCWL	27,000mm ²	Unsilenced	9
Rytons Window Trickle Ventilator (497mm L)	R5000	5,000mm ²	See technical	10
Rytons Window Trickle Ventilator (412mm L)	R2700	2,700mm ²	See technical	10
Rytons Window Trickle Ventilator (265mm L)	R1700	1,700mm ²	See technical	10

What is a $D_{n,e,w}$ sound reduction figure?

A $D_{n,e,w}$ figure reflects testing at every frequency and it is the only result recommended by the BRE for products such as vents. As there is no industry standard for presenting acoustic test results, beware of any manufacturer who quotes an unspecified dB figure. An unspecified figure may simply be the highest dB achieved at an individual frequency and may not bear any relation to your circumstances or to the type of noise you are aiming to reduce. Only a $D_{n,e,w}$ figure gives you peace of mind that the result reflects the true performance of the product.

Extracts from The Building Regulations Approved Document F, Means of ventilation, 2010

Approved Document F is a complex document with many criteria for working out the background ventilation requirements of a dwelling. The following extracts are a brief introduction as to why ventilation is required and to which ventilation systems Rytons products are best suited. A free download of Approved Document F is available at <http://www.planningportal.gov.uk/buildingregulations/approveddocuments/partf>

Section 4: Introduction to the provisions The purpose of ventilation

- 4.6 Ventilation is simply the removal of 'stale' indoor air from a building and its replacement with 'fresh' outside air. It is assumed within the Approved Document that the outside air is of reasonable quality.
- 4.7 Ventilation is required for one or more of the following purposes:
- provision of outside air for breathing;
 - dilution and removal of airborne pollutants, including odours;
 - control of excess humidity (arising from water vapour in the indoor air);
 - provision of air for fuel-burning appliances (which is covered under Part J of the Building Regulations).

Control of ventilation

- 4.18 It is important that ventilation is controllable so that it can maintain reasonable indoor air quality and avoid waste of energy. These controls can be either manual (i.e. operated by the occupant) or automatic.
- 4.19 Manually controlled trickle ventilators (the most common type of background ventilators) can be located over the window frames, in window frames, just above the glass or directly through the wall. They are positioned typically 1.7m above floor level to avoid discomfort due to cold draughts.

Equivalent areas of ventilators

- 4.26 Equivalent area is used in the Approved Document instead of free area for the sizing of background ventilators (including trickle ventilators) because it is a better measurement of the air flow performance of the ventilator. BS EN 13141-1:2004 (Clause 4) includes a method of measuring the equivalent area of background ventilation openings.

All Rytons background ventilator sets (including acoustic) have equivalent area measurements calculated by the BRE at 1Pa to BS EN 13141-1:2004.

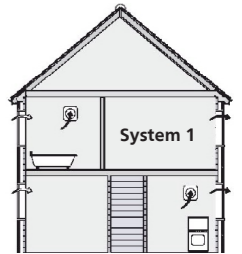
Section 5: New Dwellings

Ventilation systems for new dwellings without basements

Select one of the four ventilation systems. Rytons background ventilators are most suited to System 1 and System 3.

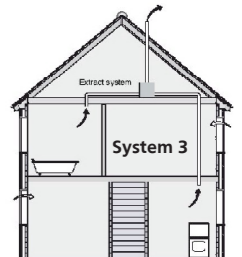
System 1: Background ventilators and intermittent extract fans

Guidance on minimum provisions for extract and whole dwelling ventilation is set out in Table 5.2a. Note that it includes separate guidance for dwellings with habitable rooms having only a single exposed façade. Rytons is able to supply the non-mechanical aspects to achieve System 1.



System 3: Continuous mechanical extract (MEV)

Guidance on minimum provisions for extract and whole dwelling ventilation is set out in Table 5.2c. Rytons is able to supply the non-mechanical aspects to achieve System 3.



Refer to Approved Document F for details of System 2: Passive stack ventilation (PSV) and System 4: Continuous mechanical supply and extract with heat recovery (MVHR).

Equivalent Area Calculations

Calculating background ventilation requirements for houses can be a daunting task. If you would like us to help you with your calculations simply email admin@rytons.com with the following information:-

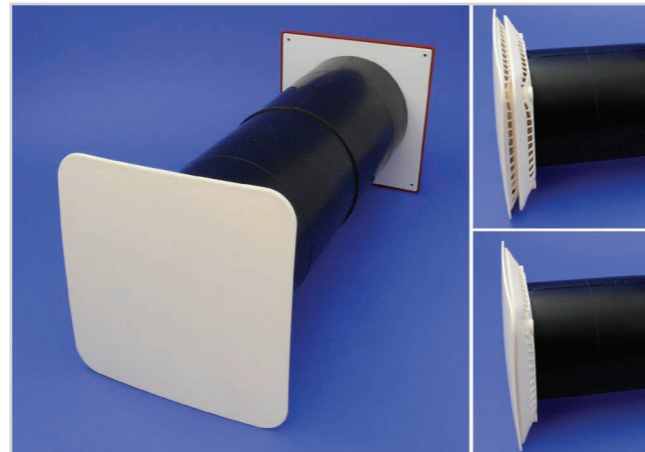
- Total floor area in m² (all floor areas combined).
- Dwelling Type:
 - Single-storey dwelling located up to and including the fourth storey above ground level.
 - Multi-storey dwelling or a single-storey dwelling that is located more than four storeys above ground level.
- Number of bedrooms.
- Number of façades.
- Design air permeability.
- Acoustic requirements.



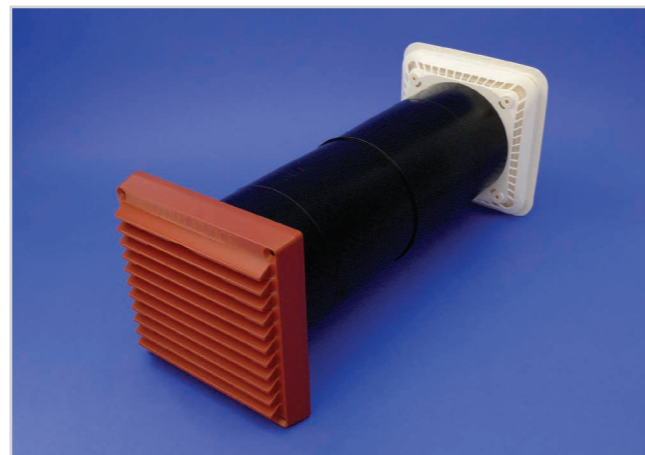
Make quick and easy ventilation calculations anytime with our free online calculators at www.vents.co.uk

Rytons Controllable LookRyt® AirCore® Ventilators

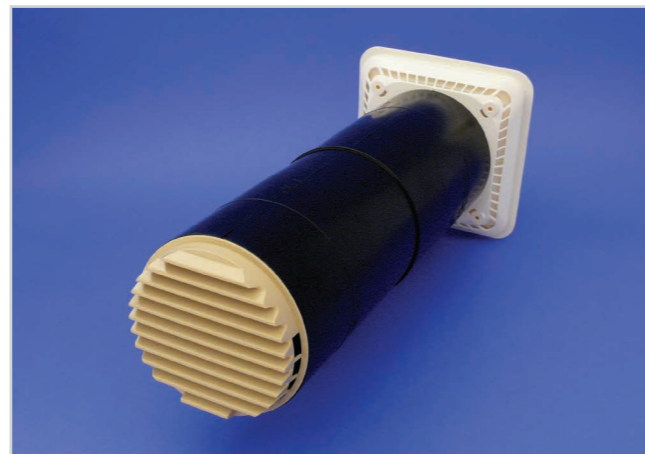
- 5" dia. retro-fitted core ventilators for the provision of controllable background air to habitable rooms.
- Acoustic options available to reduce noise transfer for a more peaceful environment.
- All sets include a draught reducing LookRyt panel which disperses air evenly for maximum comfort.
- Paint or wallpaper the LookRyt panel to match room décor for a discreet appearance.
- High rise options available fitted from the inside for high level installations.
- External water baffle prevents transfer of water across the cavity.
- External louvre grille and optional cowl U.V. stabilised to slow down the effects of sunlight.
- Screws provided to secure the internal panel.
- Equivalent areas tested to BS EN 13141-1:2004 and independently verified by the BRE.
- Acoustic performance tests by BRE Acoustics.



Rytons controllable LookRyt panel: Patent No. GB 2523676



Rytons Controllable LookRyt AirCore Terracotta external grille



Rytons Controllable High Rise LookRyt AirCore Buff/sand external grille

Consider an acoustic option ...

“ It is a common experience that noise is unpleasant and affects the quality of life. ”

World Health Organization

Size Guide

Optional Cowl:	217mm L x 210mm H x 93mm D
External Louvre:	166mm L x 160mm H
Tube:	127mm Dia. x 358mm L
LookRyt Panel:	172mm L x 172mm H

Colour Guide

Optional Cowl:	Terracotta, buff/sand, white
External Louvre:	Terracotta, buff/sand, white
LookRyt Panel:	Magnolia (may be decorated)



Make quick and easy ventilation calculations anytime with our free online calculators at www.vents.co.uk

Rytons Controllable LookRyt® AirCore® Ventilators

Code	Noise Reduction	External Finish	Tube Lining	Equivalent Area
Rytons AAC125HP	43 dB open 50 dB closed	Louvre	Acoustic	8,500mm ²
Rytons AAC125HPCWL	45 dB open 50 dB closed	Louvre & Cowl	Acoustic	8,400mm ²
Rytons AAH125HP	44 dB open 50 dB closed	High Rise Louvre	Acoustic	7,700mm ²
Rytons AC10HP	Unsilenced	Louvre	-	7,500mm ²
Rytons AC10HPCWL	Unsilenced	Louvre & Cowl	-	7,300mm ²
Rytons AC7HP	Unsilenced	Louvre	Baffles	6,500mm ²
Rytons AC7HPCWL	Unsilenced	Louvre & Cowl	Baffles	6,700mm ²
Rytons ACH75HP	Unsilenced	High Rise Louvre	Baffles	6,700mm ²



Paint or wallpaper the controllable internal panel for a discreet appearance



Rytons Controllable Ventilation Sets '9x3'

- Single brick through-wall ventilation set for the provision of controllable background air to habitable rooms.
- Acoustic options available to reduce noise transfer for a more peaceful environment.
- Multifix® Air Brick available in a choice of colours to complement external brickwork.
- External water baffles prevent transfer of water across the cavity.
- Internal and external grilles U.V. stabilised to slow down the effects of sunlight.
- Adjustable hit & miss grille gives control over the amount of ventilation let into the room.
- Telescopic cavity liner contains an internal baffle to reduce the transmission of light and draughts.
- Equivalent areas tested to BS EN 13141-1:2004 and independently verified by the BRE.
- Acoustic performance tests by BRE Acoustics.

Consider an acoustic option ...

“ One in three individuals is annoyed during the daytime and one in five has disturbed sleep at night because of traffic noise. ”

World Health Organization



Size Guide

Optional Cowl:	255mm L x 96mm H x 44mm D
AirLiner®:	Extends from 250mm-368mm L with air brick fitted
Hit & Miss:	271mm L x 95mm H

Colour Guide

Optional Cowl:	Terracotta, buff/sand
Air Brick:	Terracotta, buff/sand, white, grey, blue/black, black, brown
Hit & Miss:	White

Make quick and easy ventilation calculations anytime with our free online calculators at www.vents.co.uk

Code	Noise Reduction ($D_{n,e,w}$)	External Finish	Sleeve Lining	Equivalent Area
Rytons TAL4H&M	38 dB open 39 dB closed	Air Brick	Baffle & Acoustic	6,300mm ²
Rytons TAL4HMCWL	39 dB open 40 dB closed	Air Brick & Cowl	Baffle & Acoustic	6,300mm ²
Rytons TC8H&M	Unsilenced	Air Brick	Baffle	10,200mm ²
Rytons TC8HMCWL	Unsilenced	Air Brick & Cowl	Baffle	10,000mm ²

Rytons Controllable Ventilation Sets '9x6'

- Double brick through-wall ventilation sets for the provision of controllable background air to habitable rooms.
- Acoustic options available to reduce noise transfer for a more peaceful environment.
- Multifix® Air Bricks available in a choice of colours to complement external brickwork.
- External water baffles prevent transfer of water across the cavity.
- Internal and external grilles U.V. stabilised to slow down the effects of sunlight.
- Adjustable hit & miss grille gives control over the amount of ventilation let into the room.
- Telescopic cavity liner contains a system of internal baffles to reduce the transmission of light and draughts.
- Equivalent areas tested to BS EN 13141-1:2004 and independently verified by the BRE.
- Acoustic performance tests by BRE Acoustics.



Size Guide

Optional Cowl:	255mm L x 154mm H x 74mm D
AirLiner®:	Extends from 250mm-404mm L with air bricks fitted
Hit & Miss:	271mm L x 171mm H

Colour Guide

Optional Cowl:	Terracotta, buff/sand, white
Air Brick:	Terracotta, buff/sand, white, grey, blue/black, black, brown
Hit & Miss:	White

Consider an acoustic option ...

“ Both road traffic noise and aircraft noise increase the risk of high blood pressure.

World Health Organization ”

Make quick and easy ventilation calculations anytime with our free online calculators at www.vents.co.uk

Code	Noise Reduction ($D_{n,e,w}$)	External Finish	Sleeve Lining	Equivalent Area
Rytons TALH&M	39 dB open 40 dB closed	Air Bricks	Baffles & Acoustic	10,500mm ²
Rytons TALHMCWL	42 dB open or closed	Air Bricks & Cowl	Baffles & Acoustic	9,800mm ²
Rytons TC18HM	Unsilenced	Air Bricks	Baffles	19,800mm ²
Rytons TC18HCWL	Unsilenced	Air Bricks & Cowl	Baffles	18,000mm ²

Rytons Controllable Ventilation Sets '9x9'

- Triple brick through-wall ventilation sets for the provision of controllable background air to habitable rooms.
- Acoustic options available to reduce noise transfer for a more peaceful environment.
- Multifix® Air Bricks available in a choice of colours to complement external brickwork.
- External water baffles prevent transfer of water across the cavity.
- Internal and external grilles U.V. stabilised to slow down the effects of sunlight.
- Adjustable hit & miss grille gives control over the amount of ventilation let into the room.
- Telescopic cavity liner contains a system of internal baffles to reduce the transmission of light and draughts.
- Equivalent areas tested to BS EN 13141-1:2004 and independently verified by the BRE.
- Acoustic performance tests by BRE Acoustics.



Size Guide

Optional Cowl:	274mm L x 235mm H x 103mm D
AirLiner®:	Extends from 250mm-404mm L with air bricks fitted
Hit & Miss:	271mm L x 247mm H

Colour Guide

Optional Cowl:	Terracotta, buff/sand, white
Air Brick:	Terracotta, buff/sand, white, grey, blue/black, black, brown
Hit & Miss:	White

Consider an acoustic option ...

“ Road traffic noise has been shown to increase the risk of ischaemic heart disease.

World Health Organization ”

Make quick and easy ventilation calculations anytime with our free online calculators at www.vents.co.uk

Code	Noise Reduction ($D_{n,e,w}$)	External Finish	Sleeve Lining	Equivalent Area
Rytons TAL9H&M	38 dB open or closed	Air Bricks	Baffles & Acoustic	12,800mm ²
Rytons TAL9HMCWL	40 dB open 41 dB closed	Air Bricks & Cowl	Baffles & Acoustic	12,700mm ²
Rytons TC20HM	Unsilenced	Air Bricks	Baffles	30,000mm ²
Rytons TC20HCWL	Unsilenced	Air Bricks & Cowl	Baffles	27,000mm ²

Rytons Window Trickle Ventilators

- Two piece window frame ventilator for the provision of controllable background air to habitable rooms and wet rooms.
- Quickly and easily fitted by surface mounting over milled out slots in the window frame.
- Use with PVCu, timber or aluminium windows and fit on the sash, frame or overhead section.
- Internal vent easily adjusted allowing control over the amount of ventilation let into the room.
- U.V. stabilised to slow down the effects of sunlight.
- Curved shape gives a pleasing appearance by reducing the profile.
- Fixing screws and styled screw head covers supplied to achieve a neat finish.



Colour Guide

R5000:	White, brown
R2700:	White, brown
R1700:	White, brown



Code	Size	Equivalent Area
Rytons R5000	Internal vent: 497mm L x 30mm H x 20-27mm D (overall) External canopy: 497mm L x 18mm H x 32.5mm D (overall)	5,000mm ²
Rytons R2700	Internal vent: 411mm L x 18.5mm H x 20-26mm D (overall) External canopy: 412mm L x 17mm H x 24mm D (overall)	2,700mm ²
Rytons R1700	Internal vent: 265mm L x 18.5mm H x 20-26mm D (overall) External canopy: 267mm L x 17mm H x 24mm D (overall)	1,700mm ²

Rytons Intumescent RytBlocks

- Heavy duty intumescent grilles for walls and ducts.
- In the event of a fire slats fuse together and seal within 2 minutes.
- Gives 3 hours protection preventing the passage of smoke and gases.
- Temperature increase insulated for 22 minutes.
- ACFIRE125 compatible with our 125mm Dia. AirCore® sets.
- TL8FIRE compatible with our '9x3' AirLiner® Sets.
- TL18FIRE compatible with our '9x6' AirLiner® Sets.



Code	Size	Free Area
Rytons ACFIRE125	118mm Dia. x 43mm D	5,150mm ²
Rytons TL8FIRE	206mm L x 58mm H x 44mm D	5,330mm ²
Rytons TL18FIRE	206mm L x 124mm H x 44mm D	13,390mm ²

Product Guides & Services

As a UK ventilation manufacturer since 1972, we use all our expertise and experience to bring you outstanding product ranges and a service you can rely on.

View our product ranges, product guides and videos at www.vents.co.uk

- Boiler, Stove & Fire Ventilators (including Acoustic)
- Background Room Ventilators (including Acoustic)
- Louvre and Hit & Miss Ventilators
- Cavity Weeps, Slim Vents® & Air Bricks
- Roof Ventilators
- RytDuct® and RytHose (Rigid and Flexible Ducting)
- DamRyt® Flood Protection Range



FREE Delivery

Free delivery is available on orders of just **£75 nett** to any address on the UK mainland (including sites).

Next Day Delivery

Confirm your order before 3pm for delivery **next working day** across the majority of the UK mainland. Orders to Northern Ireland and the Republic of Ireland are normally delivered in 2-3 working days.

Here to Help

Call us on **01536 511874** or email admin@rytons.com with your quotes, questions or queries. Our offices are open 8:30am - 5:00pm weekdays and we are always happy to help.

Contact Us

Rytens Building Products Ltd
Design House
Kettering Business Park
Kettering
NN15 6NL

T: 01536 511874
F: 01536 310455
E: admin@rytons.com
www.vents.co.uk

