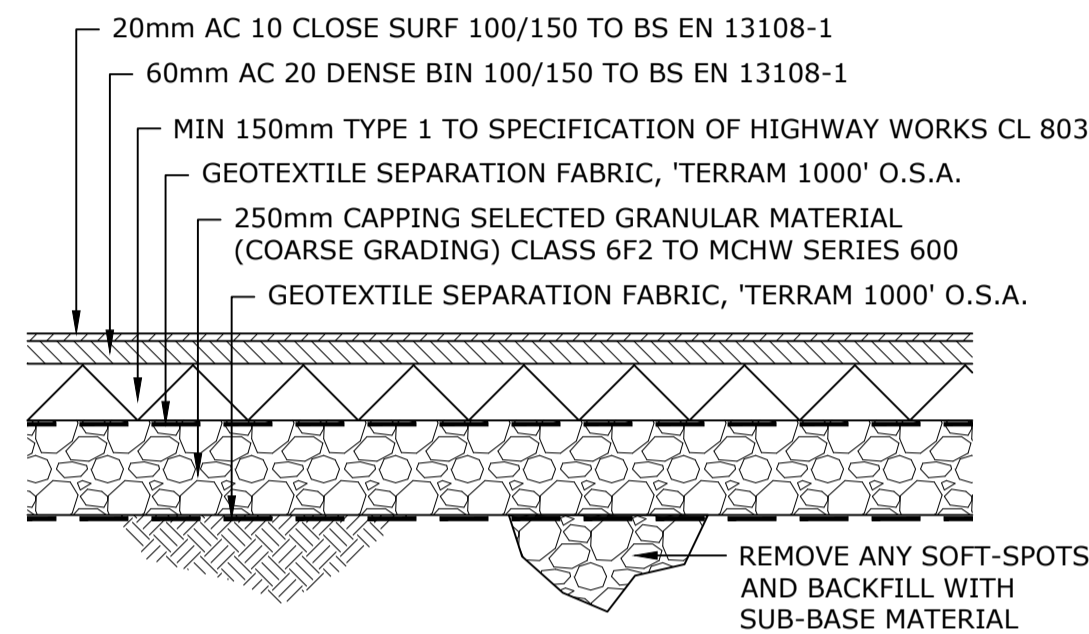
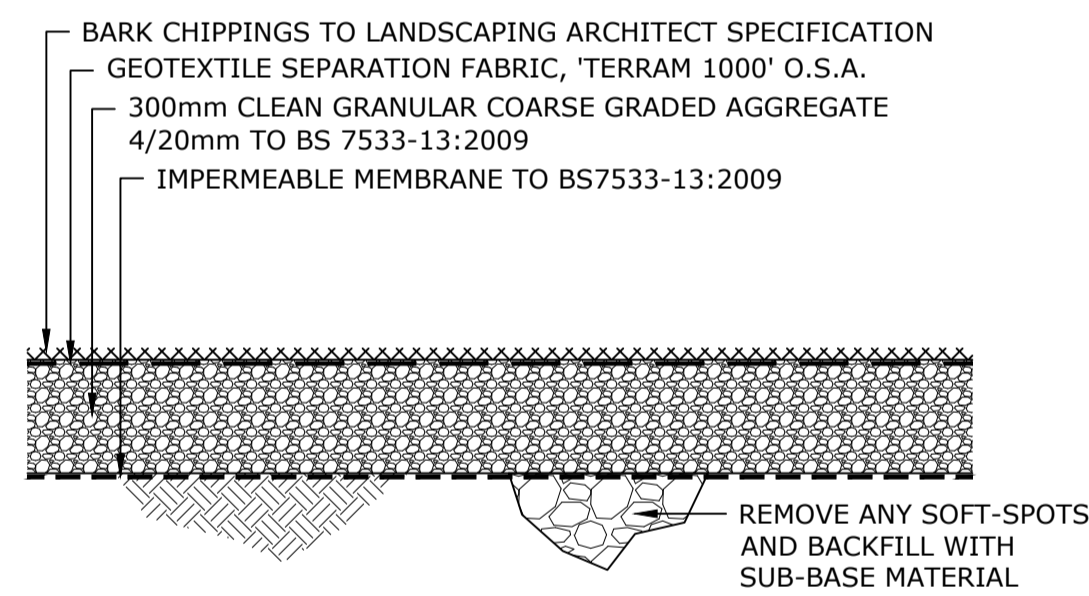


1. SELF BINDING GRAVEL
(PEDESTRIAN LOADING ONLY)

NOTE: FOR AREAS AROUND TREE PITS REFER TO LANDSCAPE ARCHITECT DETAILS

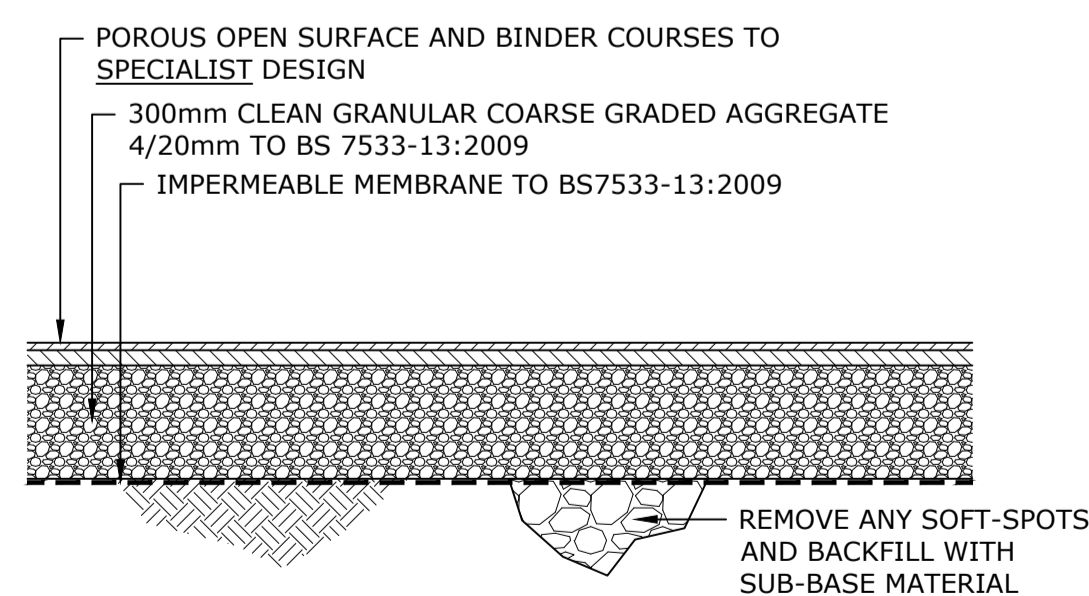


2. BUFF COLOURED MACADAM
(PEDESTRIAN AND LIGHT VEHICLES LOADING ONLY)

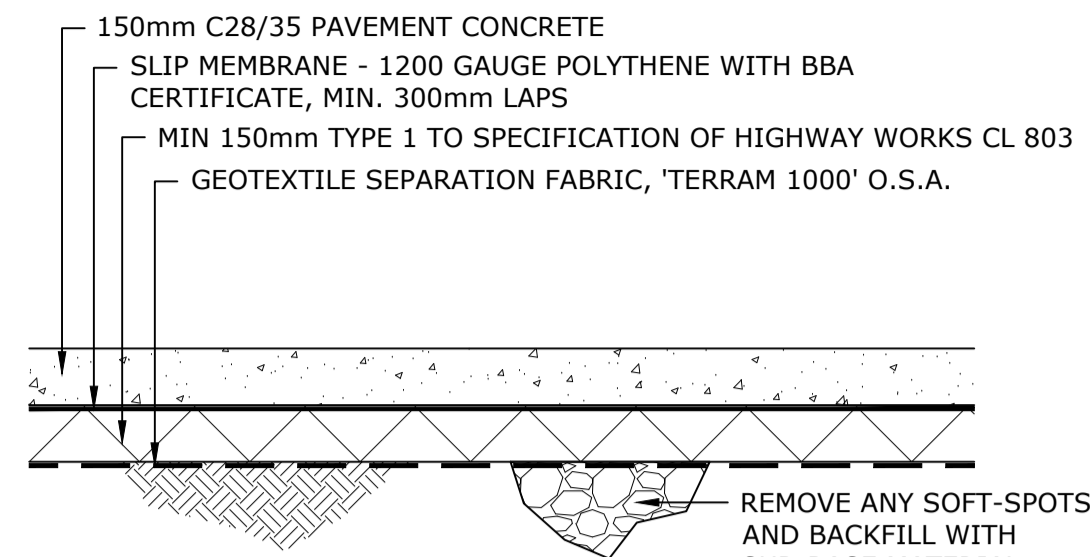


3. BARK CHIPPINGS (POROUS)
(PEDESTRIAN LOADING ONLY)

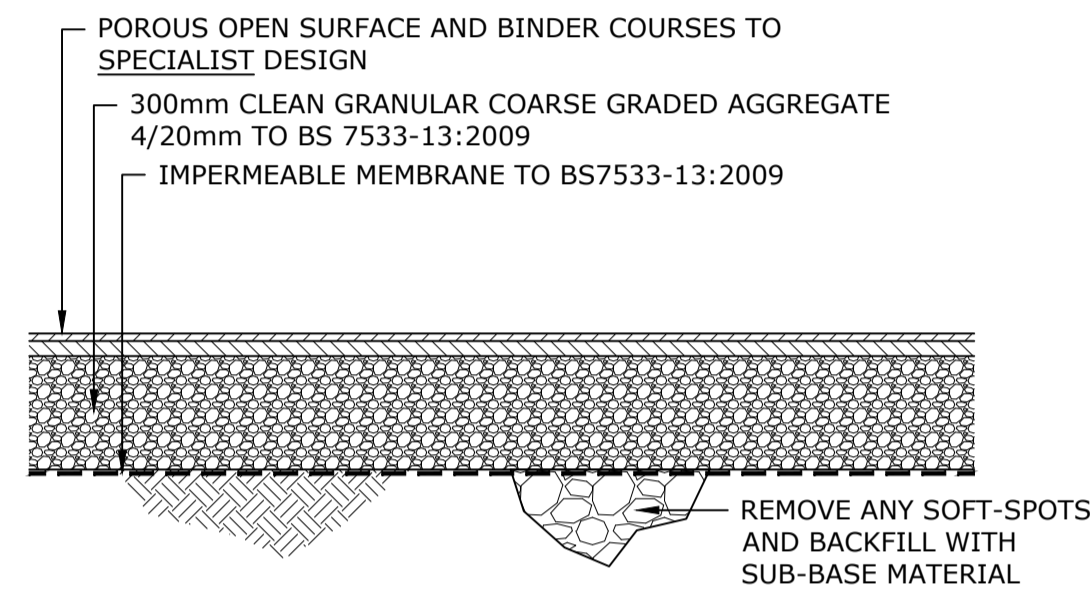
NOTE: CGA LAYER VARIES TO SUIT - FORMATION LEVEL TO MATCH SUB-BASE LAYER IN RUBBER CRUMB SAFETY SURFACING TO ALLOW FOR HYDRAULIC CONNECTIVITY



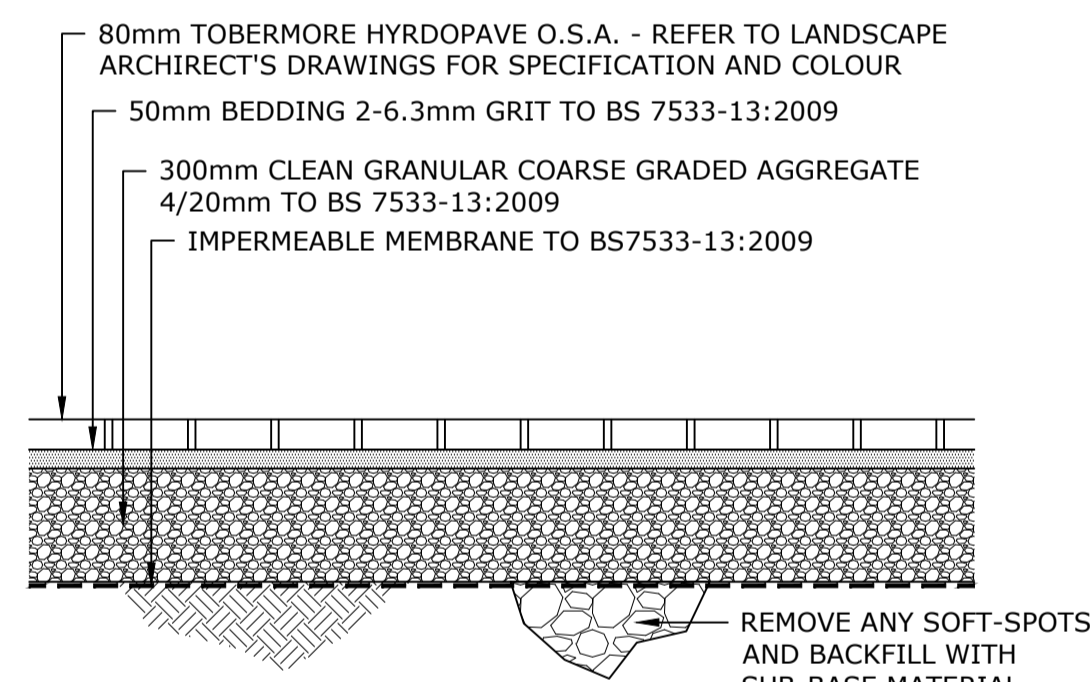
4. POROUS BLACK MACADAM
(PEDESTRIAN LOADING ONLY)



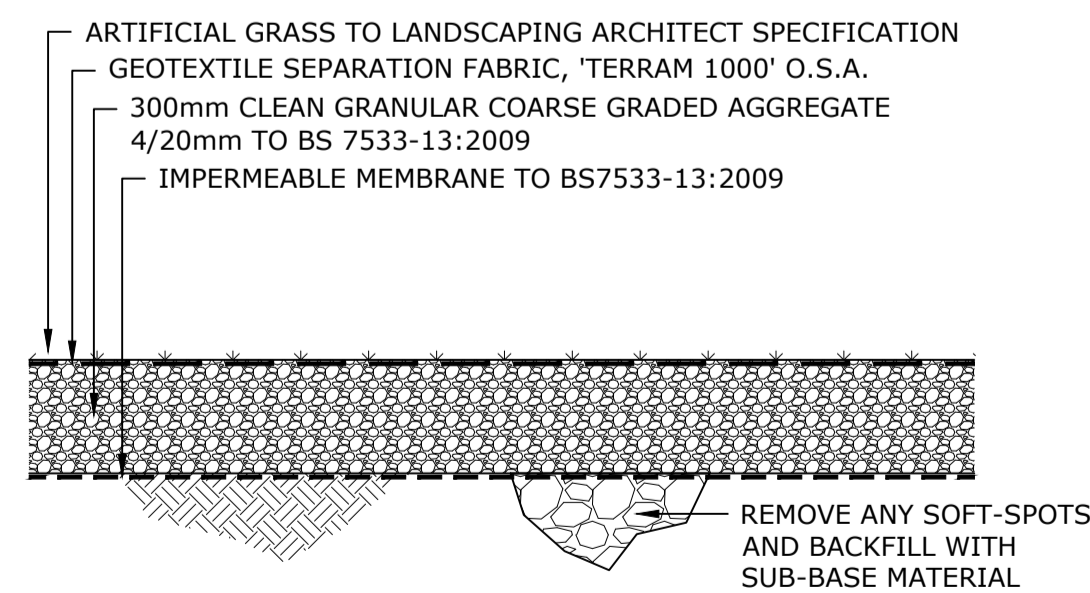
5. IN-SITU CONCRETE
(PEDESTRIAN LOADING ONLY)



6. RUBBER CRUMB SAFETY SURFACE (POROUS)
(PEDESTRIAN LOADING ONLY)

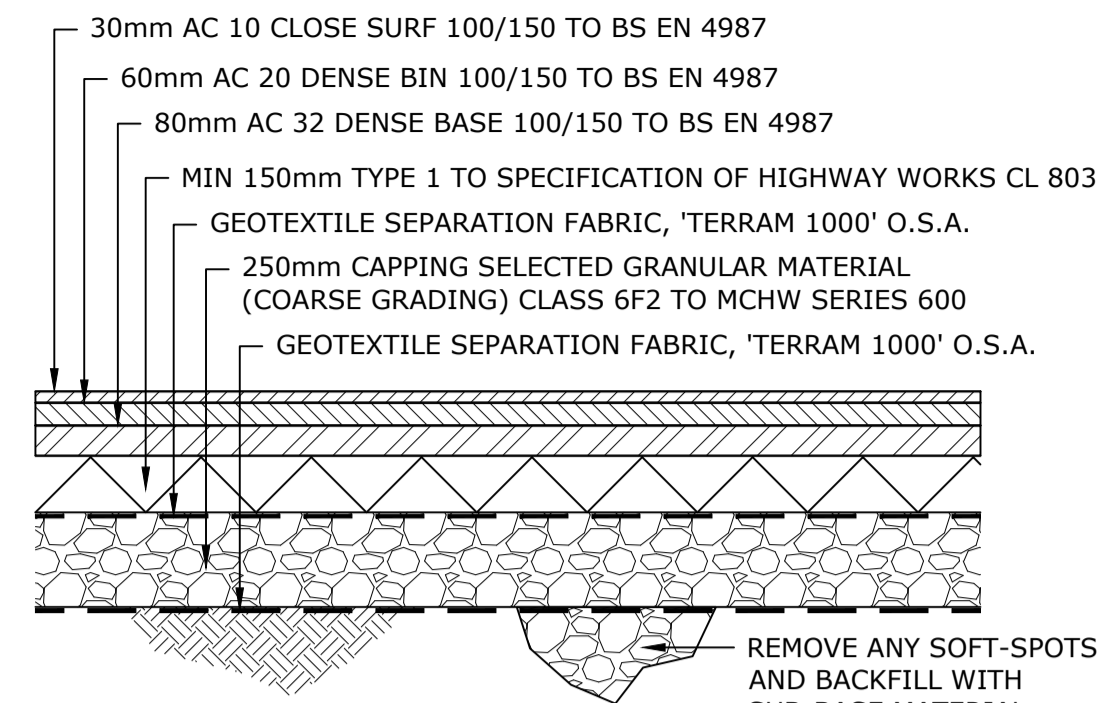


7. BRICK PAVING (POROUS)
(PEDESTRIAN LOADING ONLY)



8. ARTIFICIAL GRASS (POROUS)
(PEDESTRIAN LOADING ONLY)

NOTE: CGA LAYER VARIES TO SUIT - FORMATION LEVEL TO MATCH SUB-BASE LAYER IN RUBBER CRUMB SAFETY SURFACING TO ALLOW FOR HYDRAULIC CONNECTIVITY



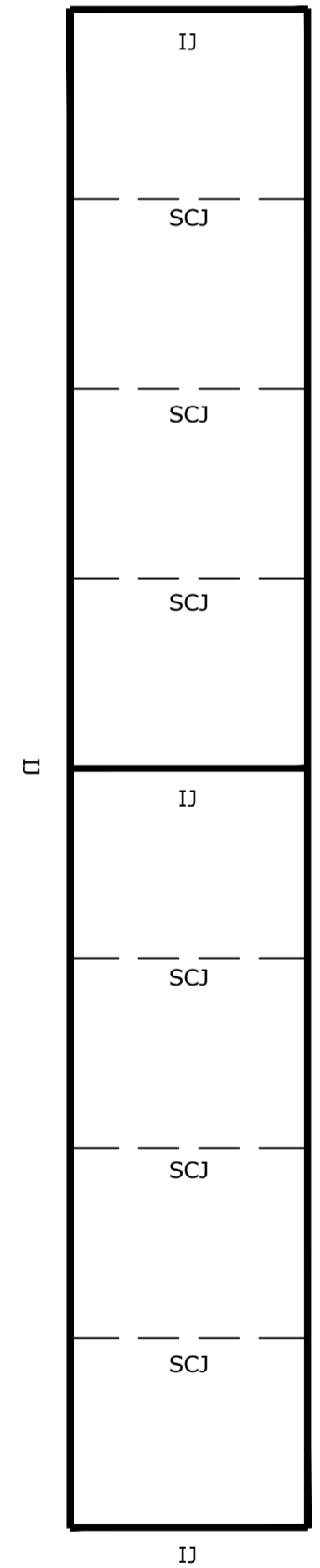
9. BUFF COLOURED MACADAM
(FIRE TENDER ACCESS)

ALL DETAILS ARE BASED ON THE CBR VALUE OF 5%. PERMEABLE SUB-BASE DEPTHS BASED ON ON-SITE TESTING. CONTRACTOR TO INFORM DESIGN TEAM IF EXCAVATED STRATA DIFFERS FROM THAT IDENTIFIED IN THE SOILS/PERMEABILITY REPORTS.

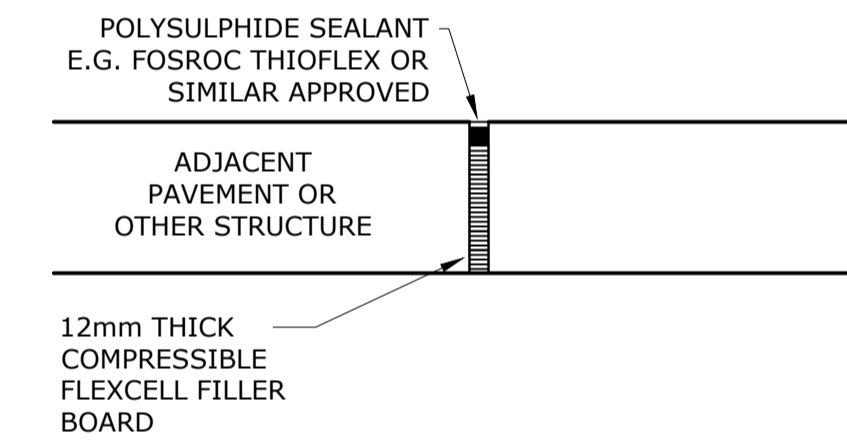
REFER TO ARCHITECTS DRAWINGS FOR TYPE, LOCATION, COLOUR AND PATTERN OF EXTERNAL SURFACING MATERIALS

ALL MATERIAL WITHIN 450mm OF THE FINISHED GROUND MUST NOT BE FROST SUSCEPTIBLE

REFER TO MLM DRAWING 0150 FOR PLOT 4 EXTERNAL WORKS LAYOUT



INDICATIVE CONCRETE JOINTING PLAN



ISOLATION JOINT DETAIL (IJ)

3-6mm WIDE JOINT FORMED BY SAW CUTTING THE TOP 30% OF THE SLAB, THEN INFILLED WITH SEALANT - TO ENGINEERS APPROVAL (FOSROC COLPOR 200 O.S.A.)

SAWN CONTROL JOINT (SCJ)

JOINTS TO BE PLACED AT DISTANCE NOTED ON GA - EVERY 4TH JOINT AND LONG EDGES TO BE ISOLATION JOINTS

NOTES

- THIS DRAWING IS TO BE READ IN CONJUNCTION WITH ALL RELEVANT ENGINEERS, ARCHITECTS AND SPECIALISTS DRAWINGS AND THE SPECIFICATION.
- DO NOT SCALE FROM THIS DRAWING MANUALLY OR ELECTRONICALLY. WRITTEN PERMISSION MUST BE OBTAINED FROM MLM PRIOR TO SCALING ELECTRONICALLY OR USING THIS ELECTRONIC FILE.

CONSTRUCTION (DESIGN AND MANAGEMENT) REGULATIONS 2015

DESIGNERS HAZARD INFORMATION FOR CONSTRUCTION

- IF YOU DO NOT FULLY UNDERSTAND THE RISKS INVOLVED DURING THE CONSTRUCTION OF THE ITEMS INDICATED ON THIS DRAWING ASK YOUR MANAGER, HEALTH & SAFETY ADVISOR OR A MEMBER OF THE DESIGN TEAM BEFORE PROCEEDING.
- SERVICES TO BE LOCATED
- MANUAL LIFTING/ HANDLING
- HOT MATERIAL WORKING
- CUTTING/ DUST
- LIVE SEWER FLOWS/ LEPTOSPIROSIS
- DEEP EXCAVATIONS, COLLAPSE/ FALLING
- LIVE TRAFFIC FLOWS

ALL WORKS TO BE CARRIED OUT BY SUITABLY TRAINED OPERATIVES PROVIDED WITH CORRECT PPE.

THE ABOVE NOTES REFER SPECIFICALLY TO THE INFORMATION SHOWN ON THIS DRAWING. REFER TO THE HEALTH AND SAFETY PLAN FOR FURTHER INFORMATION.

SPECIFICATION FOR CONCRETE IN CONTACT WITH THE GROUND:

SITE INVESTIGATION BY ESG DATED SEPTEMBER 2016 (REF: D5061-15/2) IDENTIFIED THE FOLLOWING CONDITIONS:
DESIGN SULPHATE CLASS: DS-3
AGGRESSIVE CHEMICAL ENVIRONMENT CLASS (ACEC) : AC-3
RESULTING IN DESIGN CONCRETE CLASS: DC-3
ALL CONCRETE IN CONTACT WITH THE GROUND AND GROUNDWATER SHALL COMPLY WITH THE ABOVE, AND SHALL ACHIEVE THE FOLLOWING 28 DAY CHARACTERISTIC COMPRESSIVE CUBE STRENGTH:
i. KERB BEDDING AND BACKING: 8 N/MM2
ii. DRAINAGE WORKS: 10 N/MM2

C01	04.12.2018	ISSUED FOR CONSTRUCTION	CC	JL	JL
REV	DATE	REVISION	MADE	CHK	APP

CONSTRUCTION

SUITABILITY DESCRIPTION

3rd Floor Eldon House,
2 Eldon Street,
London EC2M 7LS
Tel: 020 7422 7800
Website: www.mlmgroupp.com

CLIENT
NEILCOTT CONSTRUCTION LTD

PROJECT
CENTRAL SOMERS TOWN - PLOT 4

DRAWING TITLE
EXTERNAL WORKS CONSTRUCTION DETAILS

DRAWN/DESIGN	DL	MLM REF	STATUS	REVISION
SCALE	NTS @A1	668831	-	C01
PROJECT	ORIGINATOR	VOLUME/ LEVELS & LOCATIONS	TYPE	ROLE
668831- MLM - 04 - XX	- DR	- C	- 0160	

100mm
50mm