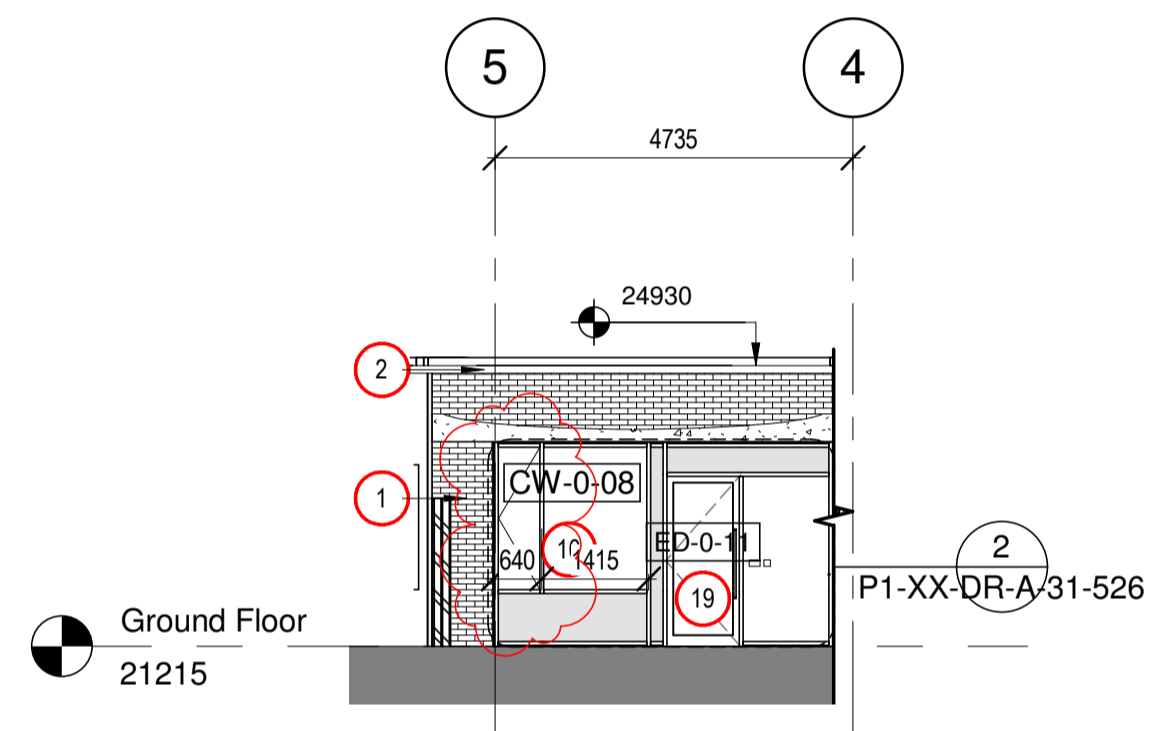


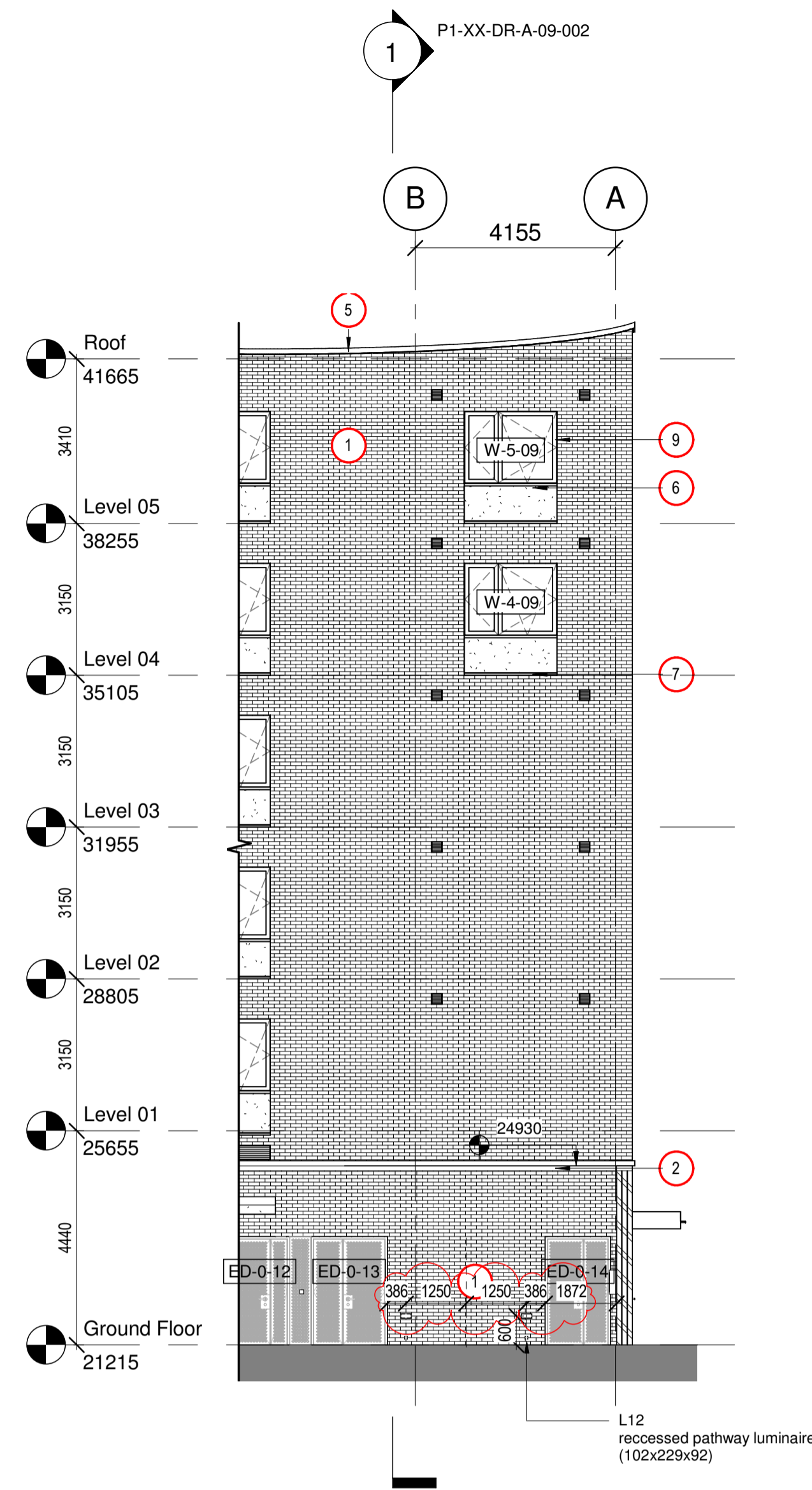
MATERIALS KEY

To be read in conjunction with drawings A-08-001 - 007

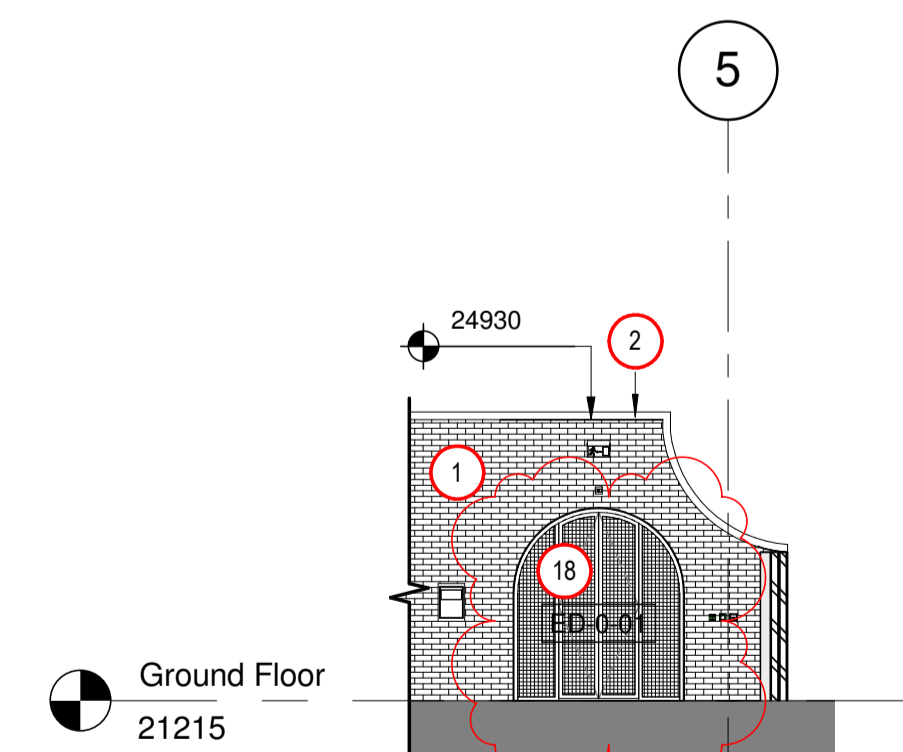
- 1 Brickwork (F10/120)
- 2 Header brick capping component (F10/120)
- 3 Sports net (Q52/645) suspended on tension rods (see SE information)
- 4 Precast concrete (F31/110)
- 5 Precast concrete coping (F31/110)
- 6 Precast concrete recessed panel (F31/110)
- 7 Precast concrete sill (F31/110)
- 8 Powder coated metal window (L10/315)
- 9 Aluminium windows (L20/315)
- 10 Aluminium windows (L20/240)
- 11 Metal window frame with obscured wired glass (L20/650)
- 12 Laser cut powder coated metal screen to vent
- 13 Perforated powder coated aluminium screens to vent (L20/240)
- 14 Powder coated metal balustrade (L30/565)
- 15 Precast concrete projecting balcony (F31/110)
- 16 Precast concrete capping stone (F31/110)
- 17 Precast concrete plinth (F31/110)
- 18 Metal gate with obscured wired glass (L20/650)
- 19 Powder coated aluminium door with large glazing panel (L20/240)
- 20 Timber fence
- 21 Metal downpipes (R10/115)
- 22 Dry Riser Inlet



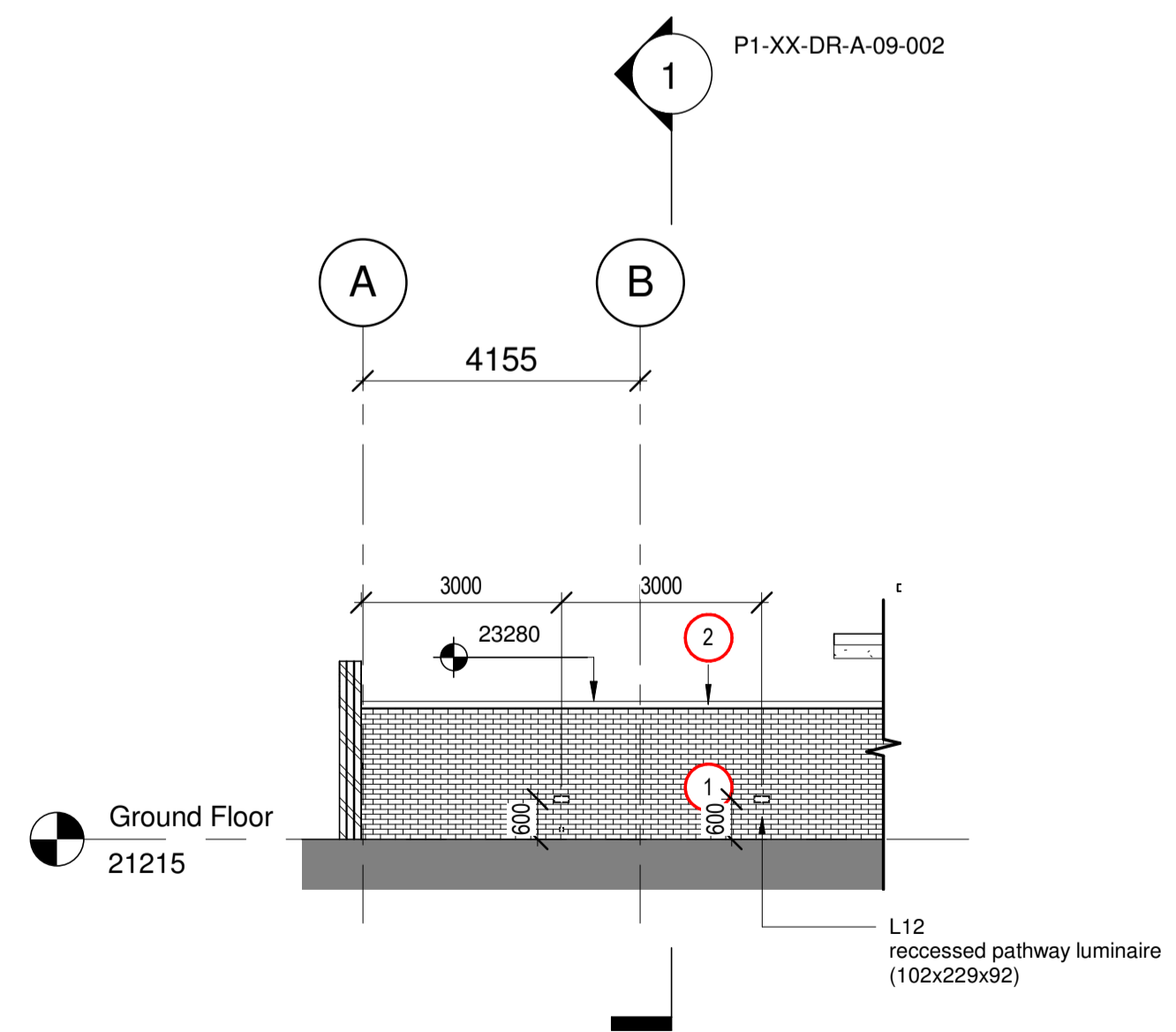
1 GA East Elevation - Nursery Entrance Courtyard
1 : 100



2 GA South Elevation - Nursery Entrance Courtyard
1 : 100

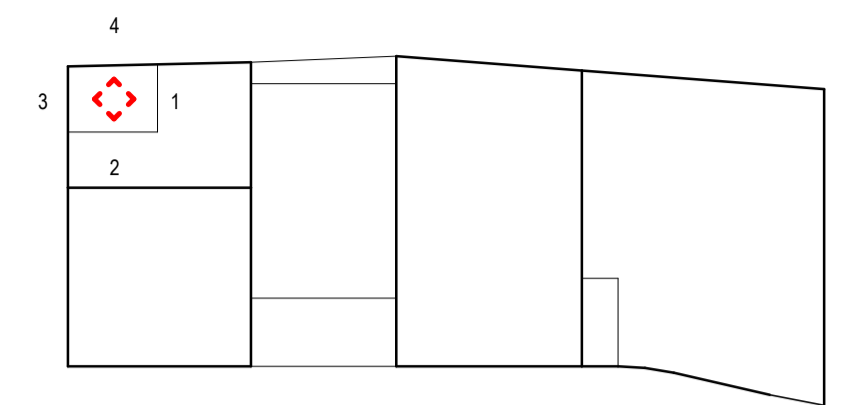


3 GA West Elevation - Nursery Entrance Courtyard
1 : 100



4 GA North Elevation - Nursery Entrance Courtyard
1 : 100

KEY SITE PLAN



NOTE

1. For movement joint locations and bed joint reinforcement refer to Structural Engineers drawings.
2. For locations of brick supports refer to 09 series sections and relevant details.

rev	description	drawn	checked	date
3	Updated to AKA Comments	CB	NF	17/12/18
2	Light Fixture Added & Wall Height Ammended	LW	NF	09/11/18
1	First Construction Issue			13/04/18

status: CONSTRUCTION

This drawing is protected under The Copyright, Designs and Patents Act 1988. Do not scale. Figured dimensions only are to be taken from this drawing. All dimensions are to be checked on site before any work is put in hand. If in doubt, ASK.

P T A L

PETER TAYLOR ASSOCIATES LIMITED
7 CURZON STREET
MAYFAIR LONDON W1J 5HG
-
TELEPHONE + 44 (0)20 7495 3837
FACSIMILE + 44 (0)20 7493 3475
EMAIL MAYFAIR@PTAL.CO.UK
WWW.PTAL.CO.UK

client: Neilcott Construction Group
Excel House
Cray Avenue
Orpington
Kent
BR5 3ST



project: Central Somers Town
Plot 1

title: GA North, South, East & West Elevation - Nursery Entrance Courtyard

scale: As indicated @ A1
date: 16/10/17
drawn: CB
checked: NF

Project ID: 170044
Originator: PTA
Drawing No: P1-XX-DR-A-08-007
revision: C3

