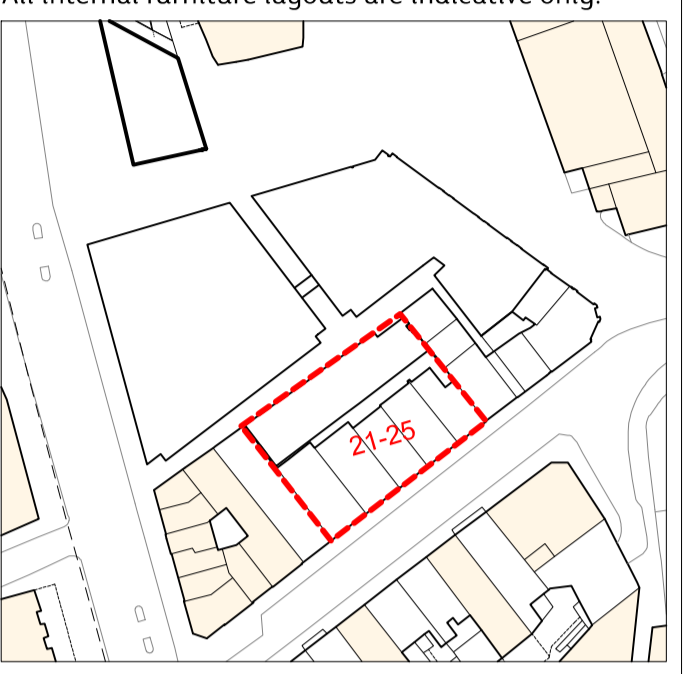
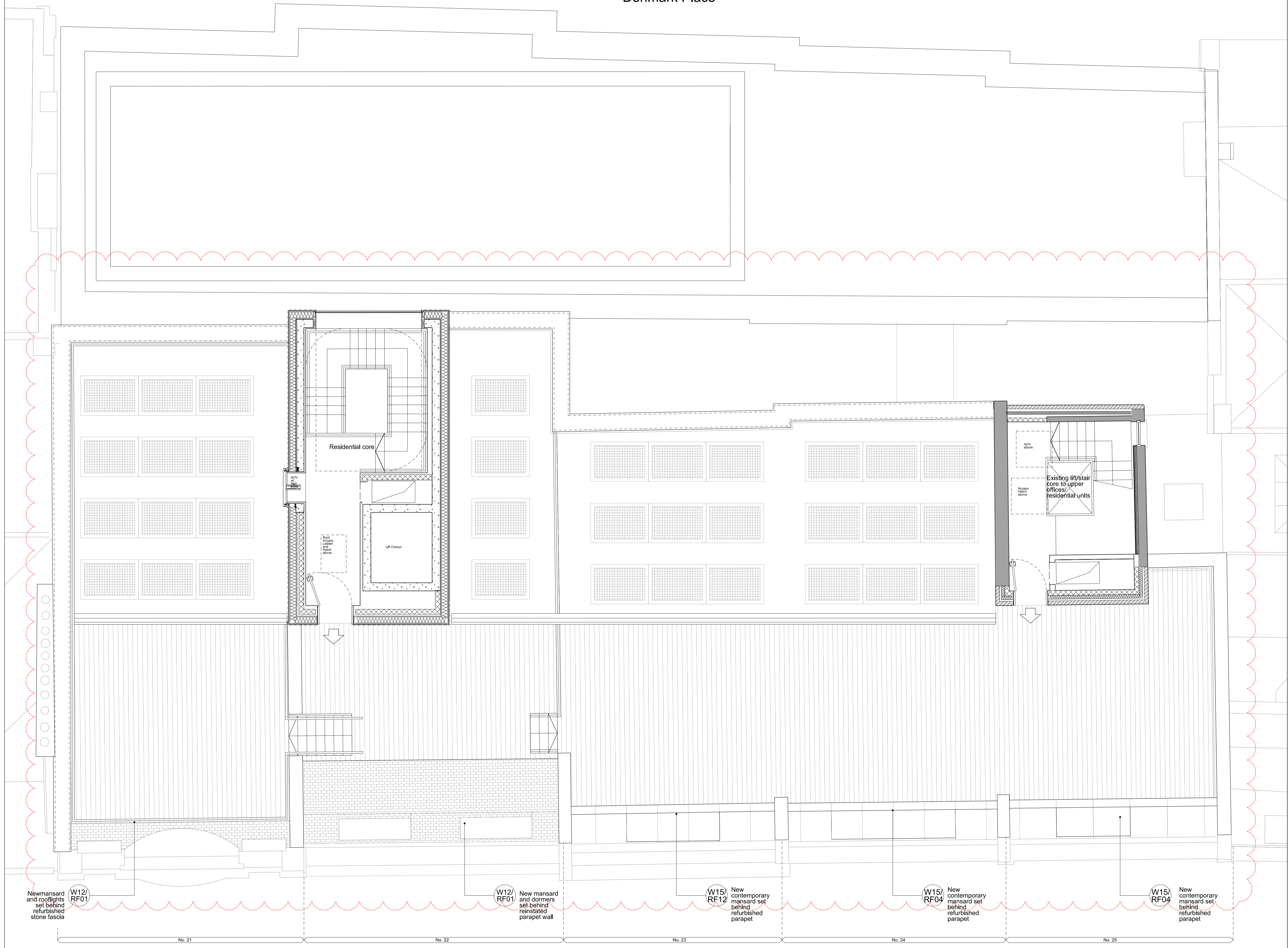


Denmark Place

CDM:

Notes:
All internal furniture layouts are indicative only.

- W12/RF01 New mansard and rooflights set behind refurbished stone fascia
- W12/RF01 New mansard and dormers set behind reinstated parapet wall
- W15/RF12 New contemporary mansard set behind refurbished parapet
- W15/RF04 New contemporary mansard set behind refurbished parapet
- W15/RF04 New contemporary mansard set behind refurbished parapet

Revision history:

P3	22.06.15	CHANGES AS CLOUDED, MMA PACK
P2	26.07.13	CHANGES AS CLOUDED, RE-ISSUED FOR PLANNING
-	14.12.12	ISSUED FOR PLANNING

Project: St Giles Circus
 Drawing title: Heritage Buildings Nos. 21-25 Denmark Street Proposed Fifth Floor

1793 PL016-06 Rev. P3

Scale: 1:50@A1

Orms
 1 Oliver's Yard
 55-71 City Road
 London EC1Y 1HQ

0207 833 8533
 orms@orms.co.uk
 orms.co.uk

Do not scale. All dimensions to be confirmed on site. Information contained in this drawing is the sole copyright of Orms designers + architects ltd and is not to be reproduced without permission.

