

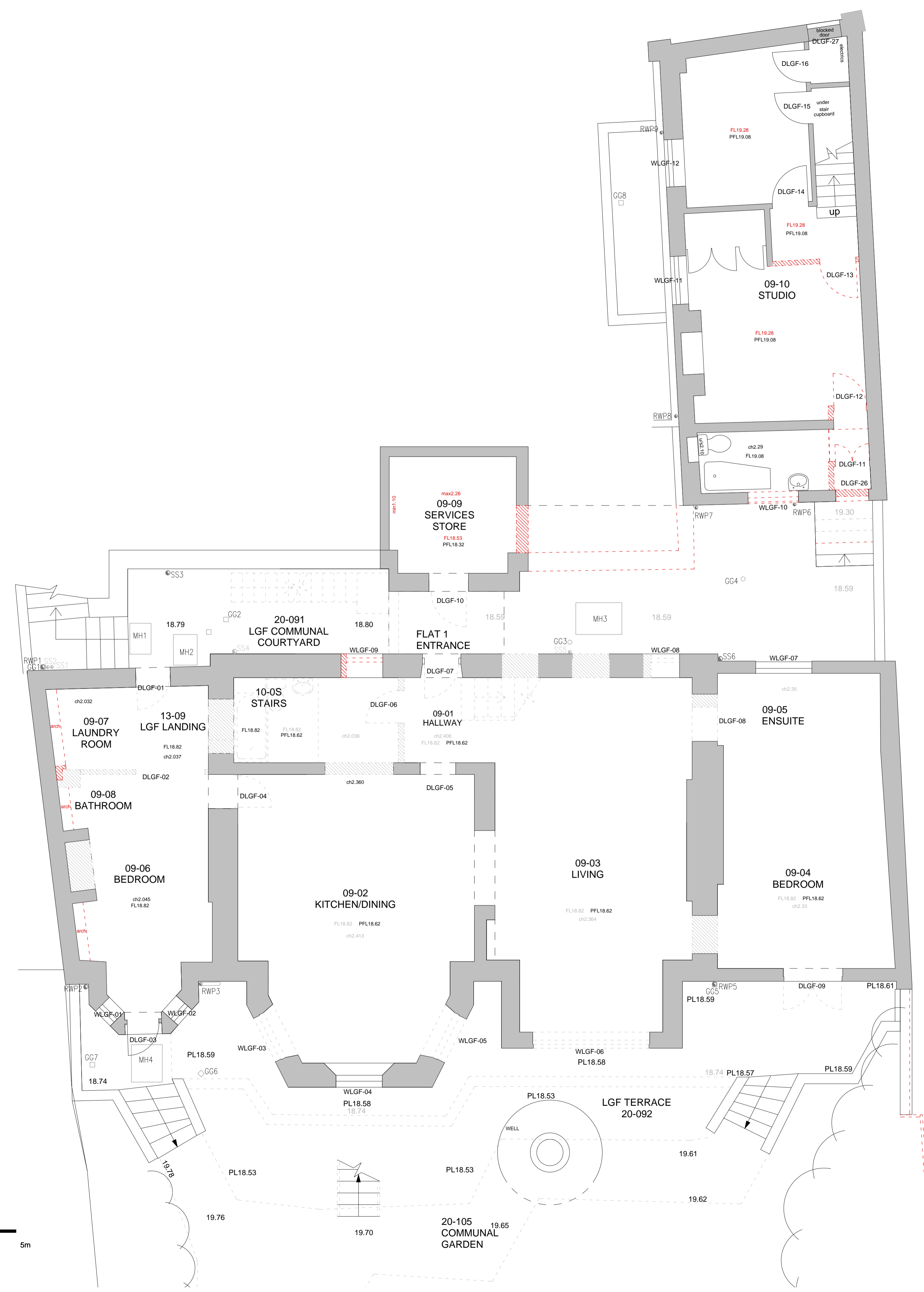
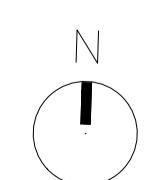


DO NOT SCALE FROM THIS DRAWING
 DRAWING TO BE READ IN CONJUNCTION WITH ALL OTHER ARCHITECTS AND ENGINEER'S CONTRACT DRAWING & SPECIFICATIONS. ANY DISCREPANCIES MUST BE BROUGHT TO THE ATTENTION OF THE ARCHITECT IMMEDIATELY.
 THE CONTRACTOR MUST VERIFY ALL DIMENSIONS BY SITE MEASUREMENT BEFORE ORDERING MATERIALS OR MANUFACTURING COMPONENTS.
 SUBSTITUTE MATERIALS & PRODUCTS TO THOSE NAMED WILL BE ACCEPTABLE IF PROVEN TO BE OF EQUAL OR HIGHER PERFORMANCE AND NOT IN CONFLICT WITH OTHER ELEMENTS.

NOTES KEY:
 Consented Demolition associated with Application ref: 2013/0112/L, 2014/7932/P, 2016/6840/P & 2016/7148/L
 Proposed demolition
 Note:
 For windows and doors please refer to schedules.



LOWER GROUND PLAN
 0m 1m 2m 3m 4m 5m



REV	DATE	DESCRIPTION
A	30.11.18	For planning

FOR PLANNING

JOB TITLE:
 Keats Grove
 Hampstead
DRAWING TITLE:
 Lower Ground Floor Plan
 Proposed Demolition

JOB No	DWG No	REV
546	D01	A
DRAWN BY	SCALE (A4/A1)	DATE
RFB	1:50 (1:100@A3)	Oct18

RICHARD GRIFFITHS ARCHITECTS
 5 Maidstone Mews, 72-76 Borough High Street, London SE1 1GN
 T +44(0)20 7357 8788 | F +44(0)20 7403 7887
 E admin@rgarchitects.com | www.rgarchitects.com