

PROPOSED ARE TIMBER DOUBLE GLAZED WINDOWS  
IN A LIKE FOR LIKE STYLE TO MATCH EXISTING

PROPOSED ARE TIMBER DOUBLE GLAZED WINDOWS  
IN A LIKE FOR LIKE STYLE TO MATCH EXISTING

PROPOSED ARE TIMBER DOUBLE GLAZED WINDOWS  
IN A LIKE FOR LIKE STYLE TO MATCH EXISTING

It is proposed that the existing single glazed timber windows are replaced with timber double glazed sash windows double glazed casement windows on the top storey in a like for like style to the existing.



FRONT ELEVATION  
(Proposed)

It is proposed that the existing single glazed timber windows are replaced with timber double glazed sash windows double glazed casement windows on the top storey in a like for like style to the existing.

PROPOSALS:

The proposals are for replacement of the existing timber windows at the front, rear and side of the property.

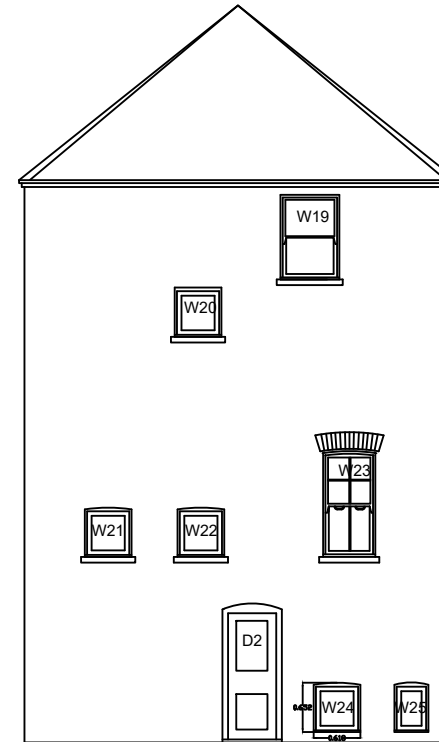
Proposed are replacement timber double glazed sash windows and timber double glazed casement windows on the top storey in a like for like style to the existing current building regulations as per attached details.

The fenestration will be followed to the front, side and rear elevation.



REAR ELEVATION  
(Proposed)

It is proposed that the existing single glazed timber windows are replaced with timber double glazed sash windows double glazed casement windows on the top storey in a like for like style to the existing.

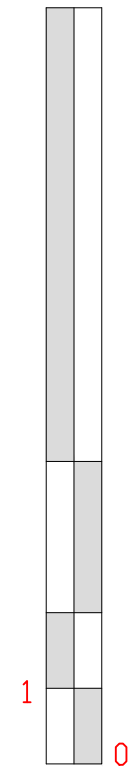


SIDE ELEVATION  
(Proposed)

It is proposed that the existing single glazed timber windows are replaced with timber double glazed sash windows double glazed casement windows on the top storey in a like for like style to the existing.

Notes:

10 Meter



1:100



EMPLOYER'S AGENTS & PROJECT MANAGERS  
UNIT A COURT HOUSE, 11A HIGH STREET  
BARNET EN5 5UJ  
TEL: 020 8446 5537  
E-MAIL: [Planning@walkercc.co.uk](mailto:Planning@walkercc.co.uk)

TITLE  
PROPOSED ELEVATIONS

PROJECT  
150 Mill Lane

CLIENT  
GENESIS HOUSING ASSOCIATION / KIER

SCALE: AS IDENTIFIED  
CAD FILE: -  
DATE: 17.10.18  
DRAWN BY: RBM  
CHECKED:

PROJECT NO.	DRAWING NO.	REVISION
4278	4278/WM/02	1