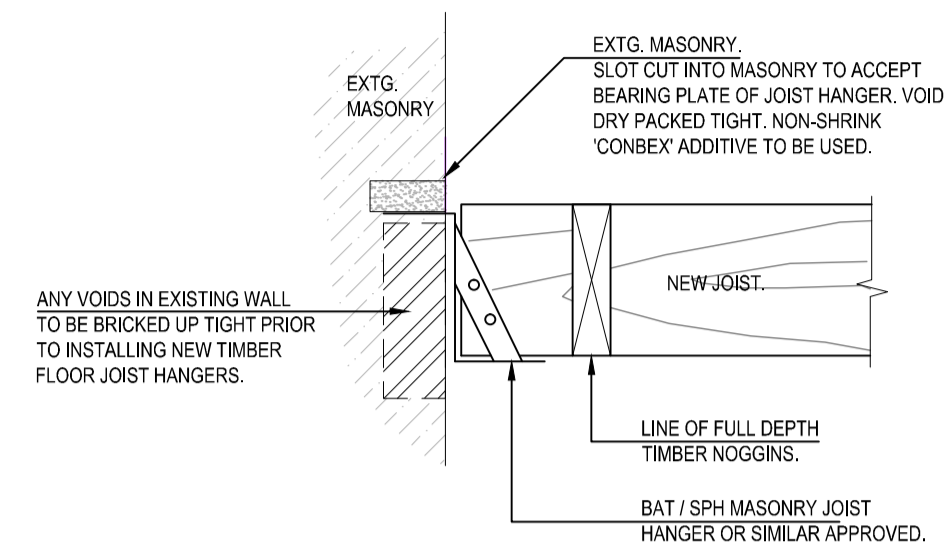


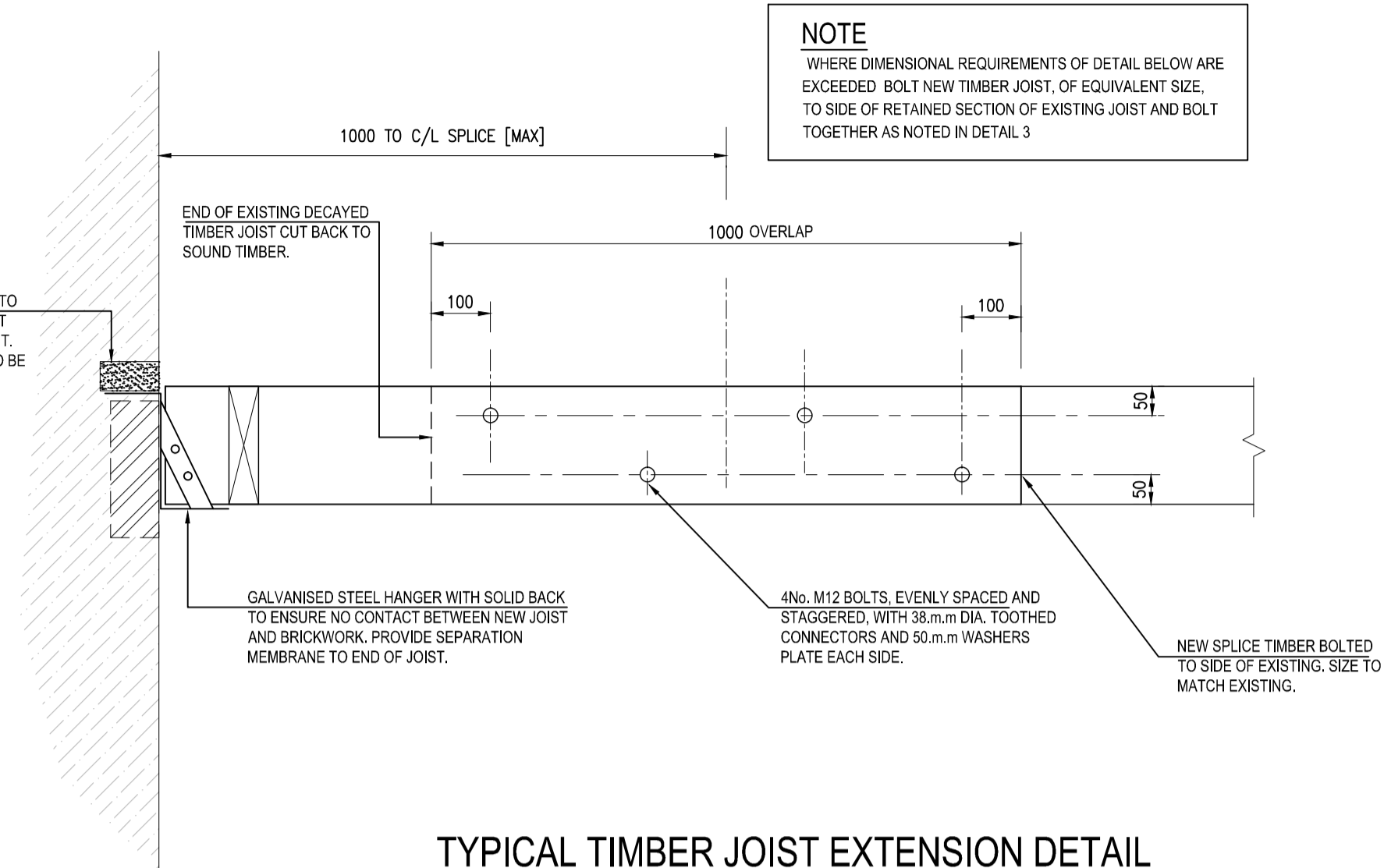
1. THIS DRAWING IS TO BE READ IN CONJUNCTION WITH ALL OTHER RELEVANT DOCUMENTATION.
2. DO NOT SCALE FROM THIS DRAWING.
3. ALL DIMENSIONS ARE IN MILLIMETRES. ALL CHAINAGES, LEVELS AND CO-ORDINATES ARE IN METERS UNLESS DEFINED OTHERWISE.
4. THIS DRAWING IS TO BE READ IN CONJUNCTION WITH THE PROJECT HEALTH AND SAFETY FILE FOR ANY IDENTIFIED POTENTIAL RISKS.



**TYPICAL FLOOR JOIST SUPPORT
 DETAIL IN EXTG. MASONRY WALLS.**

DETAIL 1
 1:10

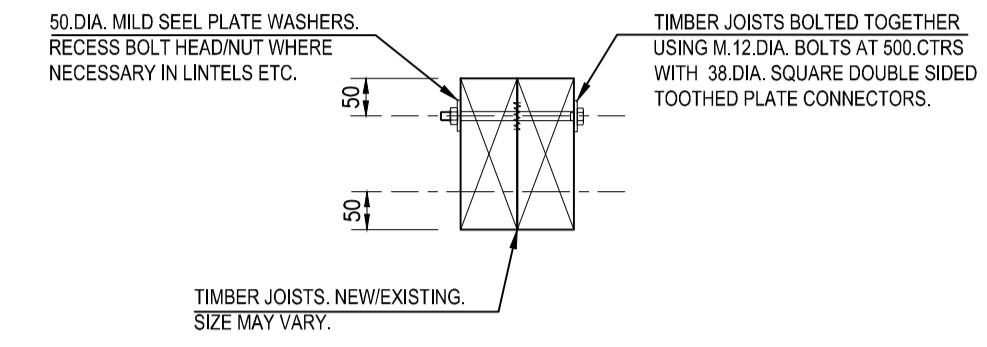
SLOT CUT INTO EXTG. MASONRY TO ACCEPT BEARING PLATE OF JOIST HANGER. VOID DRY PACKED TIGHT. NON-SHRINK 'CONBEX' ADDITIVE TO BE USED.



**TYPICAL TIMBER JOIST EXTENSION DETAIL
 WHERE EXISTING JOIST CUT BACK DUE TO ROT**

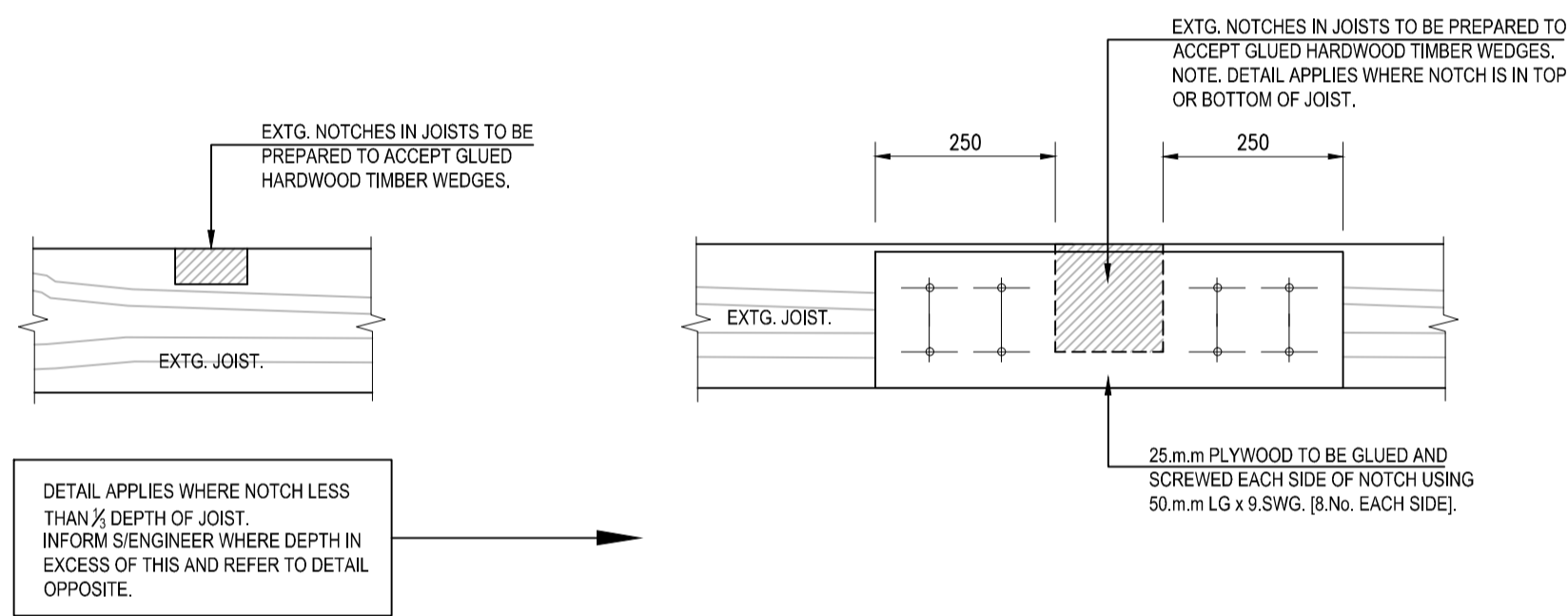
DETAIL 2
 1:10

NOTE
 WHERE DIMENSIONAL REQUIREMENTS OF DETAIL BELOW ARE EXCEEDED BOLT NEW TIMBER JOIST, OF EQUIVALENT SIZE, TO SIDE OF RETAINED SECTION OF EXISTING JOIST AND BOLT TOGETHER AS NOTED IN DETAIL 3



**NEW TIMBER TRIMMER SHOWING
 BOLTING REQUIREMENTS**

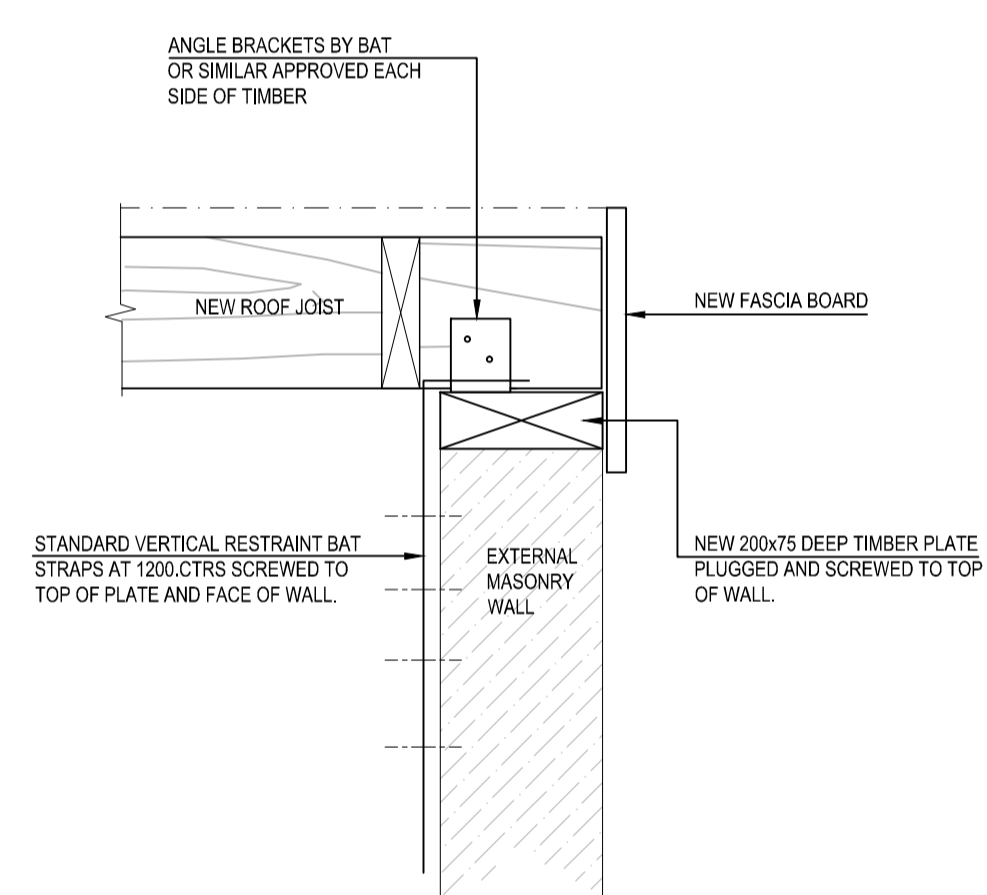
DETAIL 3
 1:10



TYPICAL EXISTING TIMBER JOIST NOTCH REPAIR DETAILS

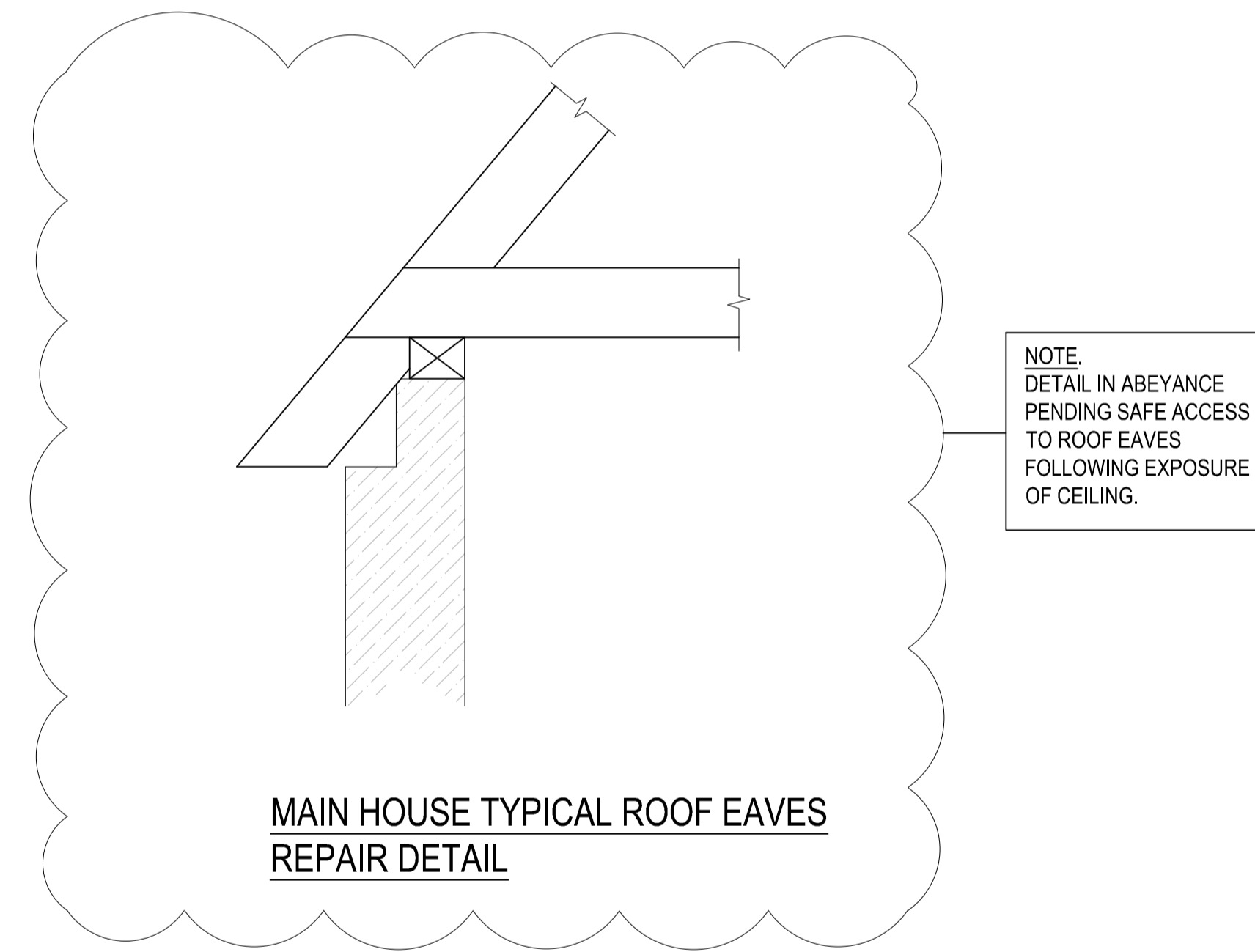
DETAIL 4
 1:10

DETAIL APPLIES WHERE NOTCH LESS THAN 1/2 DEPTH OF JOIST. INFORM S/ENGINEER WHERE DEPTH IN EXCESS OF THIS AND REFER TO DETAIL OPPOSITE.



**VERTICAL RESTRAINT DETAIL TO
 EXISTING EXTERNAL MASONRY**

DETAIL 5
 1:10



**MAIN HOUSE TYPICAL ROOF EAVES
 REPAIR DETAIL**

ISSUE/REVISION

I/R	DATE	DESCRIPTION
A	08.11.18	ISSUED FOR INFORMATION

KEY PLAN

PROJECT NUMBER

SHEET TITLE

WEST HAMPSTEAD COTTAGES.
 TYPICAL REPAIR DETAILS

SHEET NUMBER

WHC-ACM-XX-XX-DE-SE-0001