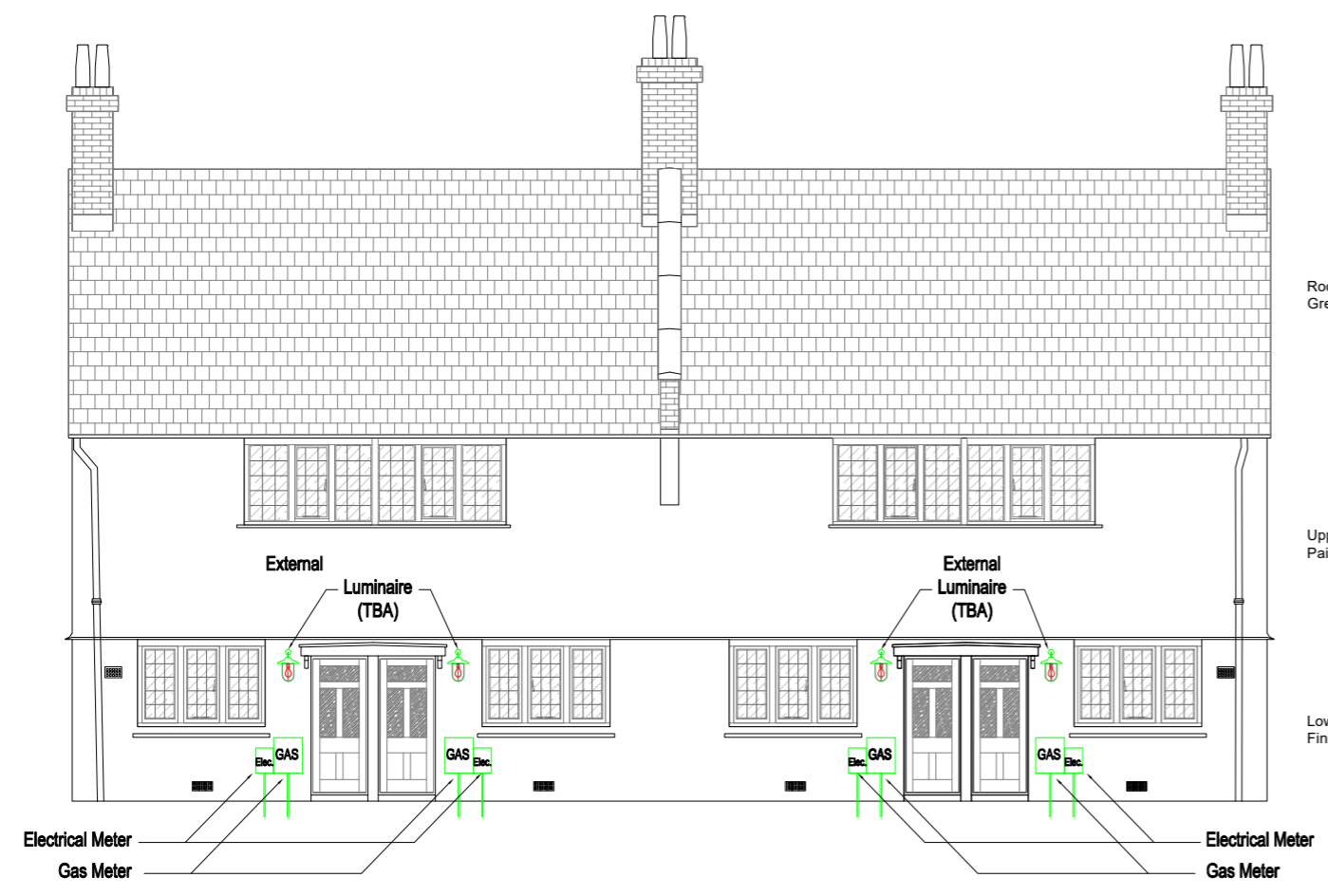


NOTES
 IF IN DOUBT ASK.
 Dimensions to be verified on site.
 This drawing is the property of CBS Design Consultants.
 Copyright is reserved by them and the drawing is issued on the condition that it is not copied, reproduced, retained or disclosed to any unauthorised person, either wholly or in part without the consent in writing of CBS Design Consultants.

REVISIONS

BY	DATE	DETAILS
0	08.11.18	FOR INFORMATION
A	14.12.18	TENDER ISSUE

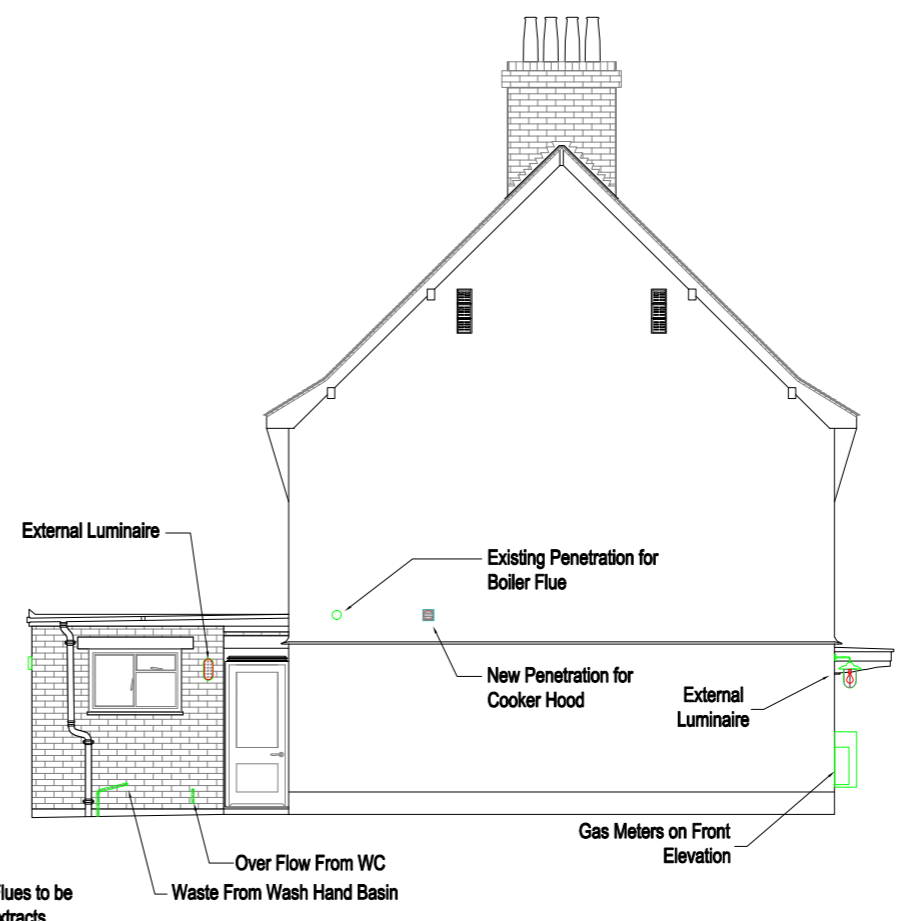
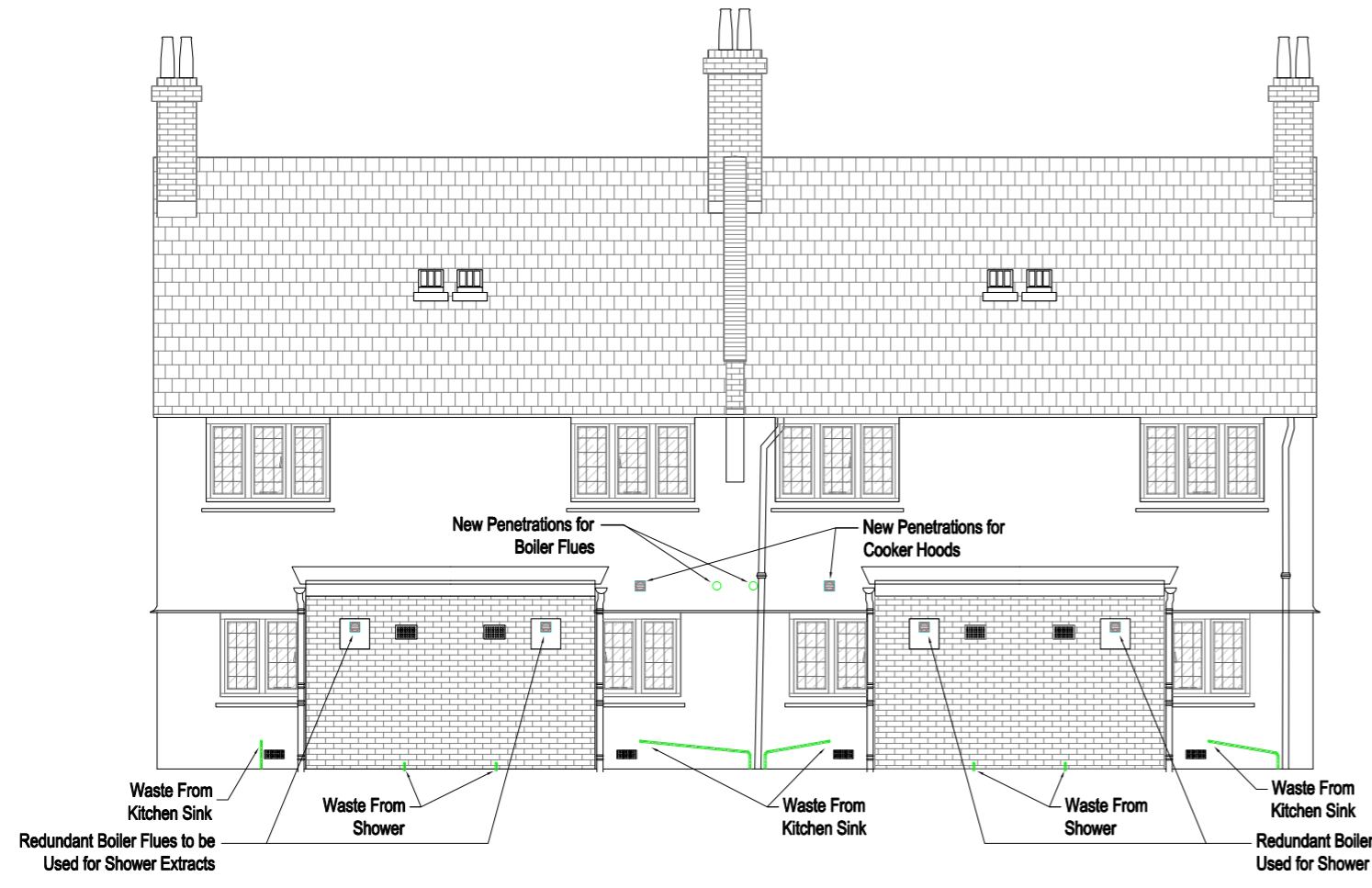
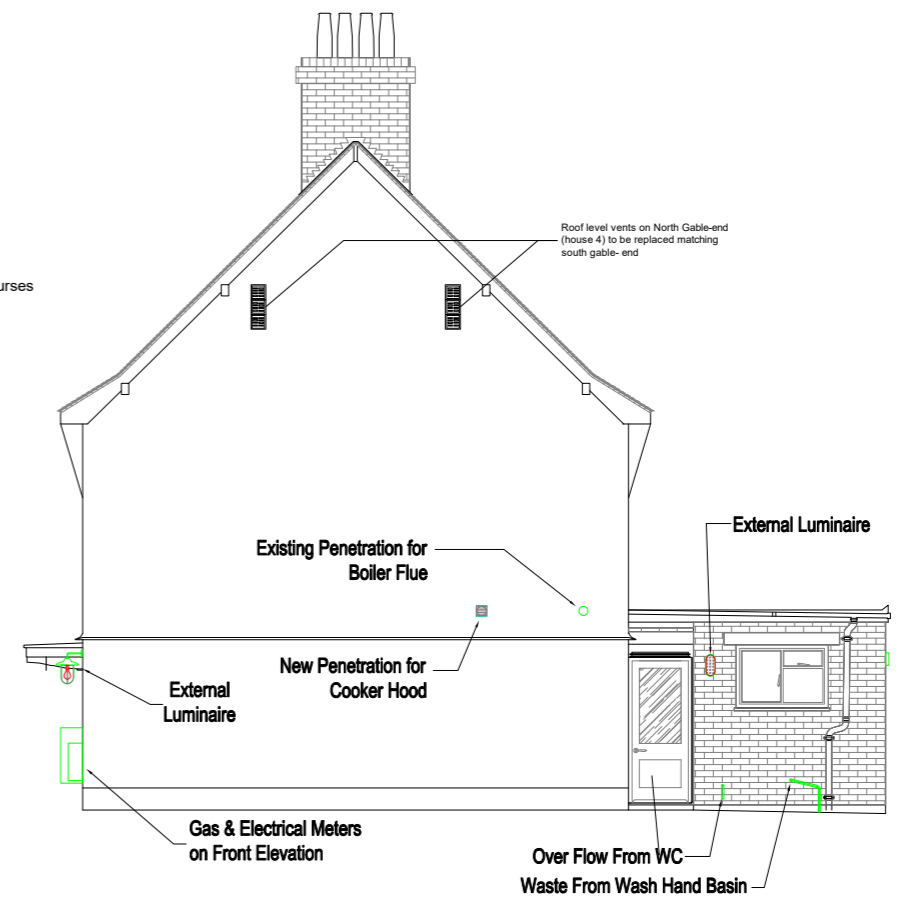
KEY



Roof:
 Grey Blue Slates In Diminishing courses

Upper Storey:
 Painted Roughcast Render

Lower Storey:
 Finish to be Agreed



CBS
 design consultants

132 Royal College Street, London NW1 0TA
 t: 020 7428 8640 e: cbs@cbs-uk.com www.cbs-uk.com

PROJECT:
 West Hampstead Fire Station

CLIENT:
 London Fire Commissioner

DRAWING TITLE:
 External Elevations
 Proposed Services Arrangement

SCALE: 1:100 @ A3 DATE: Nov. '18 BY: CT

ISSUE STATUS:
 DESIGN TENDER CONSTRUCTION RECORD

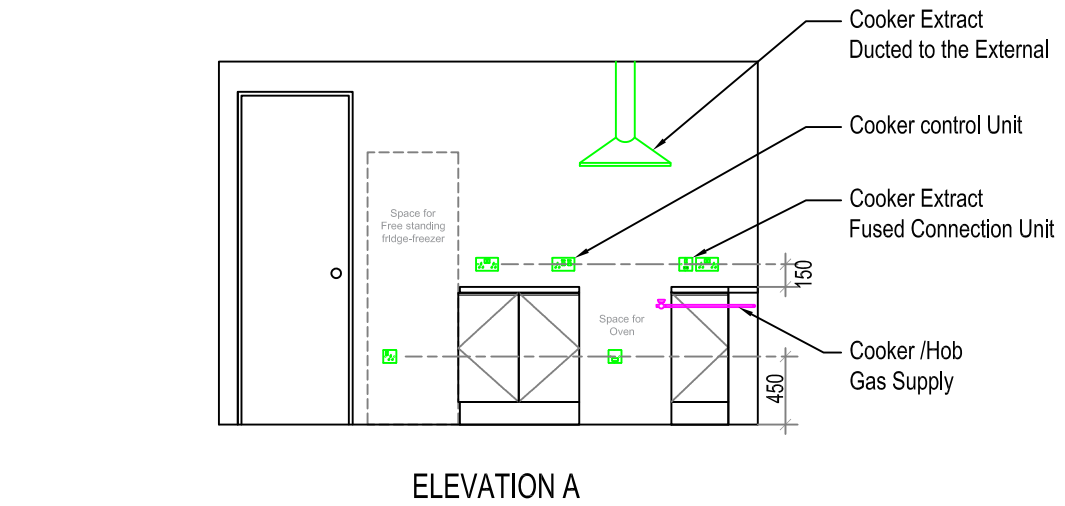
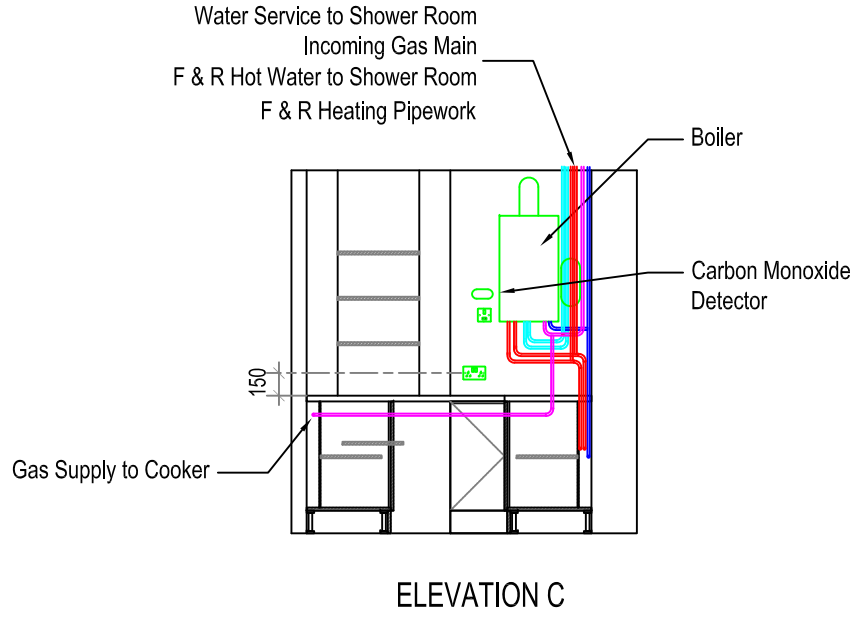
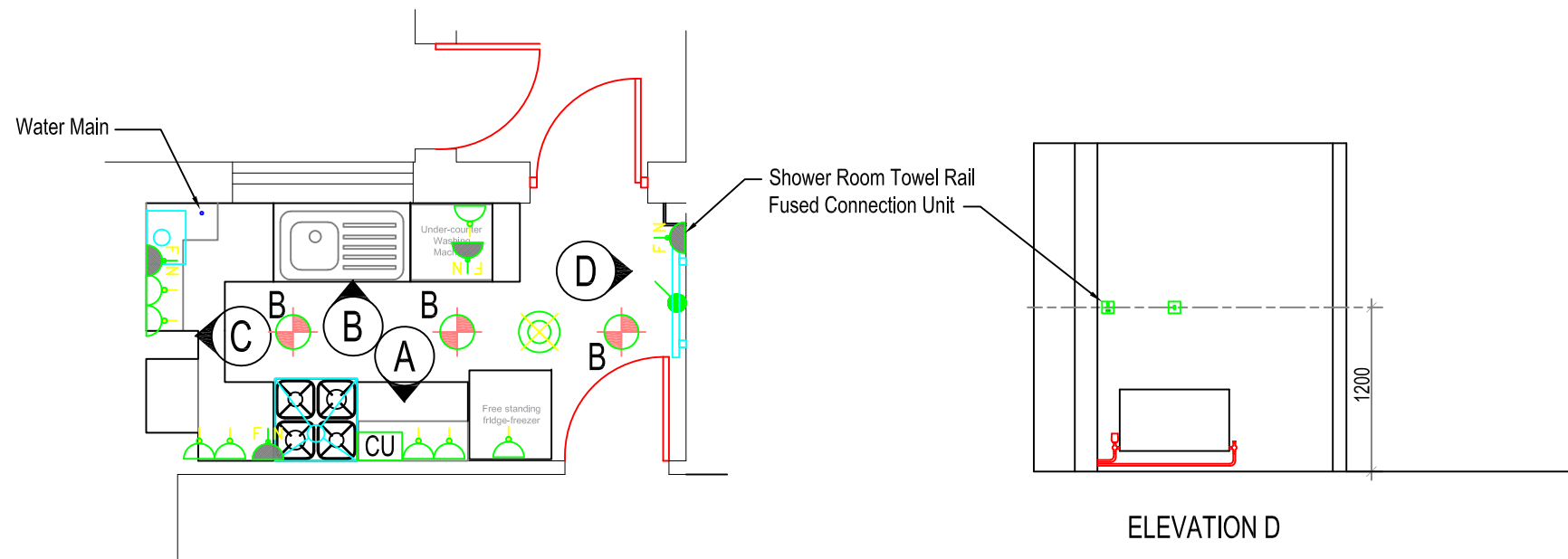
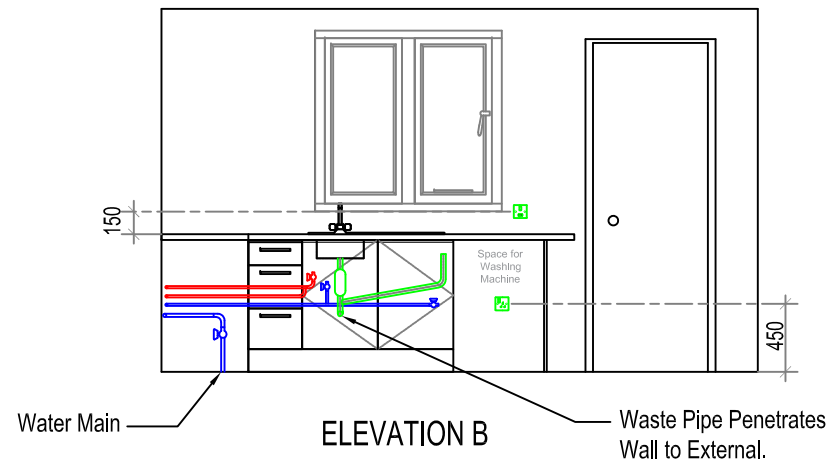
DRAWING NO: ME001 REVISION: A

NOTES
 IF IN DOUBT ASK
 Dimensions to be verified on site.
 This drawing is the property of CBS Design Consultants.
 Copyright is reserved by them and the drawing is issued on the condition that it is not copied, reproduced, retained or disclosed to any unauthorised person, either wholly or in part without the consent in writing of CBS Design Consultants.

REVISIONS

BY:	DATE:	DETAILS:
0	20.11.18	FOR INFORMATION
A	14.12.18	TENDER ISSUE

KEY
 Pipework layout simplified for clarity, i.e. valves, waste traps etc. not shown.



CBS
 design consultants

132 Royal College Street, London NW1 0TA
 t: 020 7428 8640 e: cbs@cbs-uk.com www.cbs-uk.com

PROJECT:
 West Hampstead Fire Station

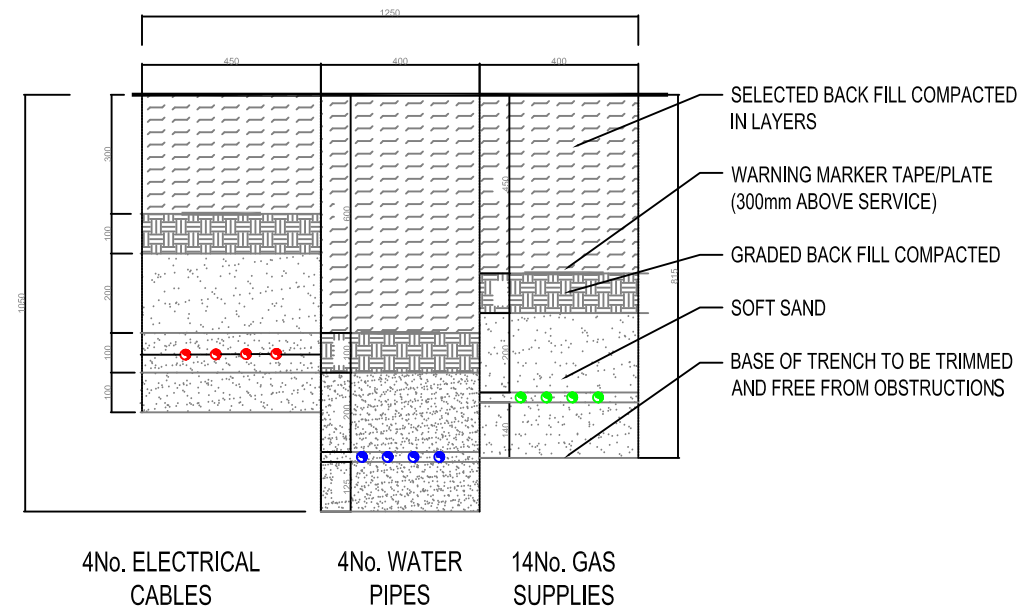
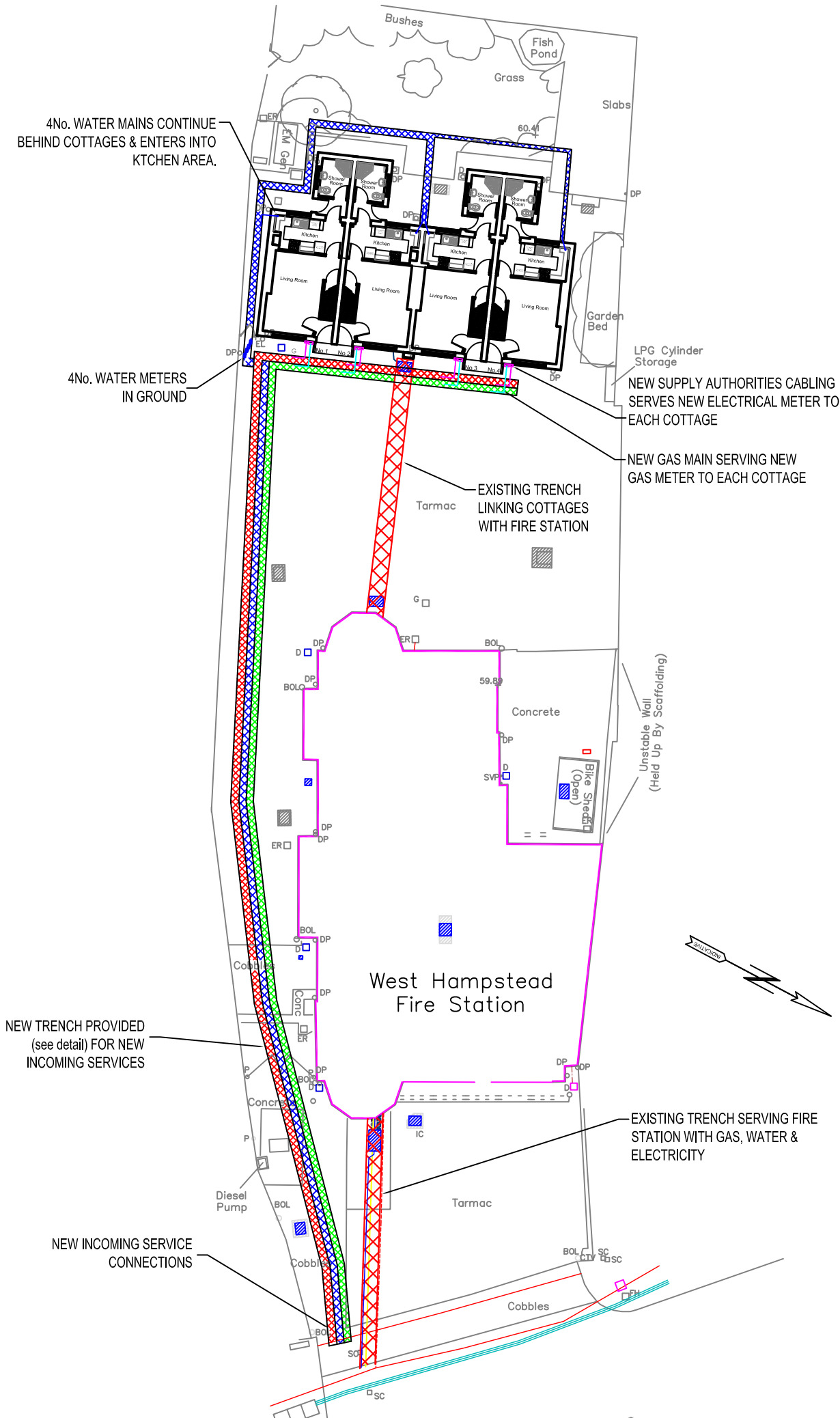
CLIENT:
 London Fire Commissioner

DRAWING TITLE:
 Kitchen Services
 Proposed Layout

SCALE: 1:50 @ A3 DATE: Nov. '18 BY: CT

ISSUE STATUS:
 DESIGN TENDER CONSTRUCTION RECORD

DRAWING NO: ME002 REVISION: A



NEW INCOMING SERVICES

NOTES
 IF IN DOUBT ASK.
 Dimensions to be verified on site.
 This drawing is the property of CBS Design Consultants.
 Copyright is reserved by them and the drawing is issued on the condition that it is not copied, reproduced, retained or disclosed to any unauthorised person, either wholly or in part without the consent in writing of CBS Design Consultants.

REVISIONS

BY:	DATE:	DETAILS:
A	14.12.18	TENDER ISSUE

KEY

CBS
 design consultants
 132 Royal College Street, London NW1 0TA
 t: 020 7428 8640 e: cbs@cbs-uk.com www.cbs-uk.com

PROJECT:
 West Hampstead Fire Station

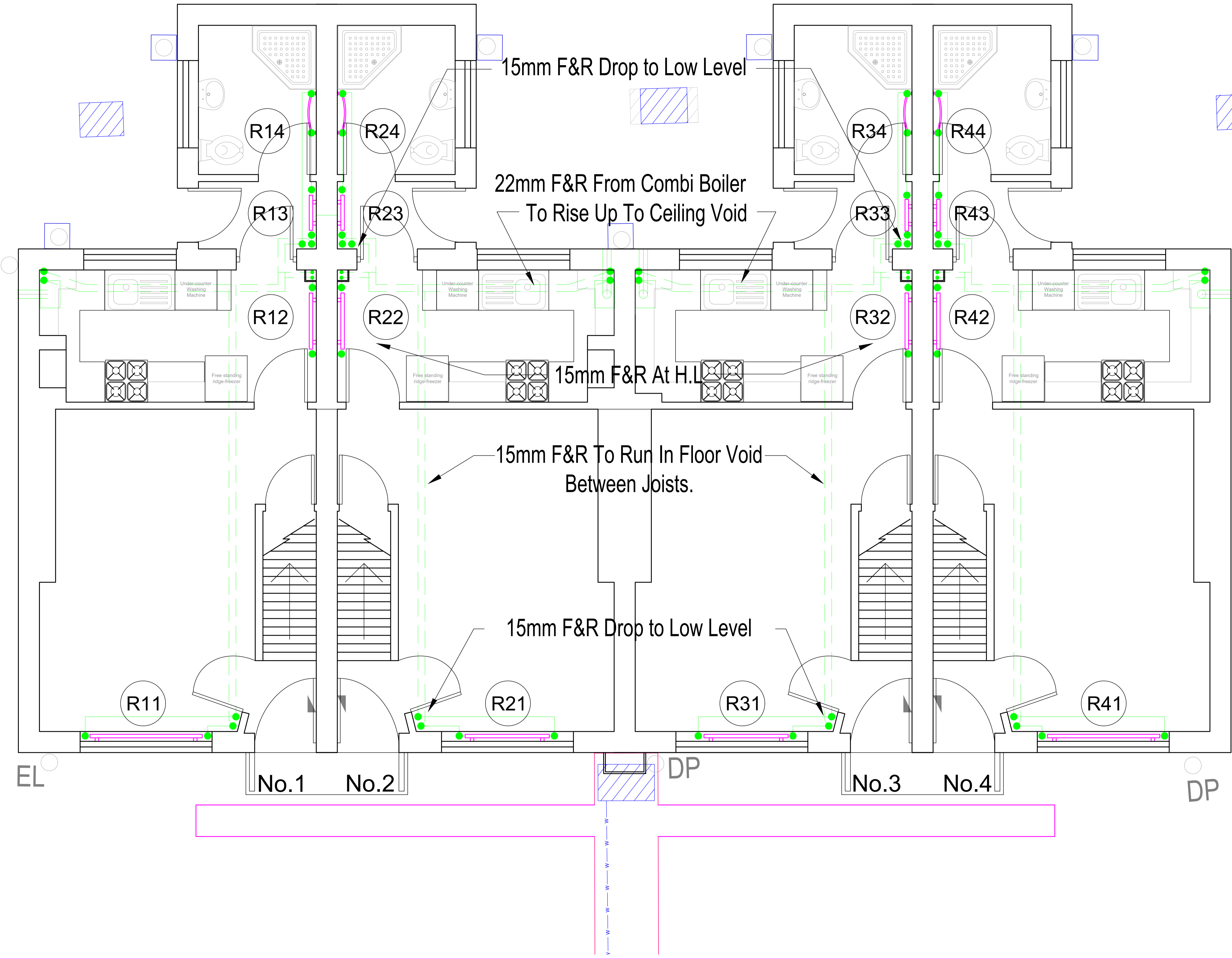
CLIENT:
 London Fire Commissioner

DRAWING TITLE:
 Incoming Services
 Proposed Arrangement

SCALE: NTS **DATE:** Nov. '18 **BY:** CT

ISSUE STATUS:
 DESIGN TENDER CONSTRUCTION RECORD

DRAWING NO: ME003 **REVISION:** A



NOTES
 IF IN DOUBT ASK
 Dimensions to be verified on site.
 This drawing is the property of CBS Design Consultants.
 Copyright is reserved by them and the drawing is issued on the condition that it is not copied, reproduced, retained or disclosed to any unauthorised person, either wholly or in part without the consent in writing of CBS Design Consultants.

REVISIONS

NO.	DATE	DETAILS
0	01.11.18	FOR INFORMATION
A	14.12.18	TENDER ISSUE

KEY



132 Royal College Street, London NW1 0TA
 t: 020 7428 8640 e: cbs@cbs-uk.com www.cbs-uk.com

PROJECT:
 West Hampstead Fire Station

CLIENT:
 London Fire Commissioner

DRAWING TITLE:
 GROUND FLOOR
 Proposed Heating System

SCALE: 1:50 @A3 DATE: Nov. '18 BY: CT

ISSUE STATUS:
 DESIGN TENDER CONSTRUCTION RECORD

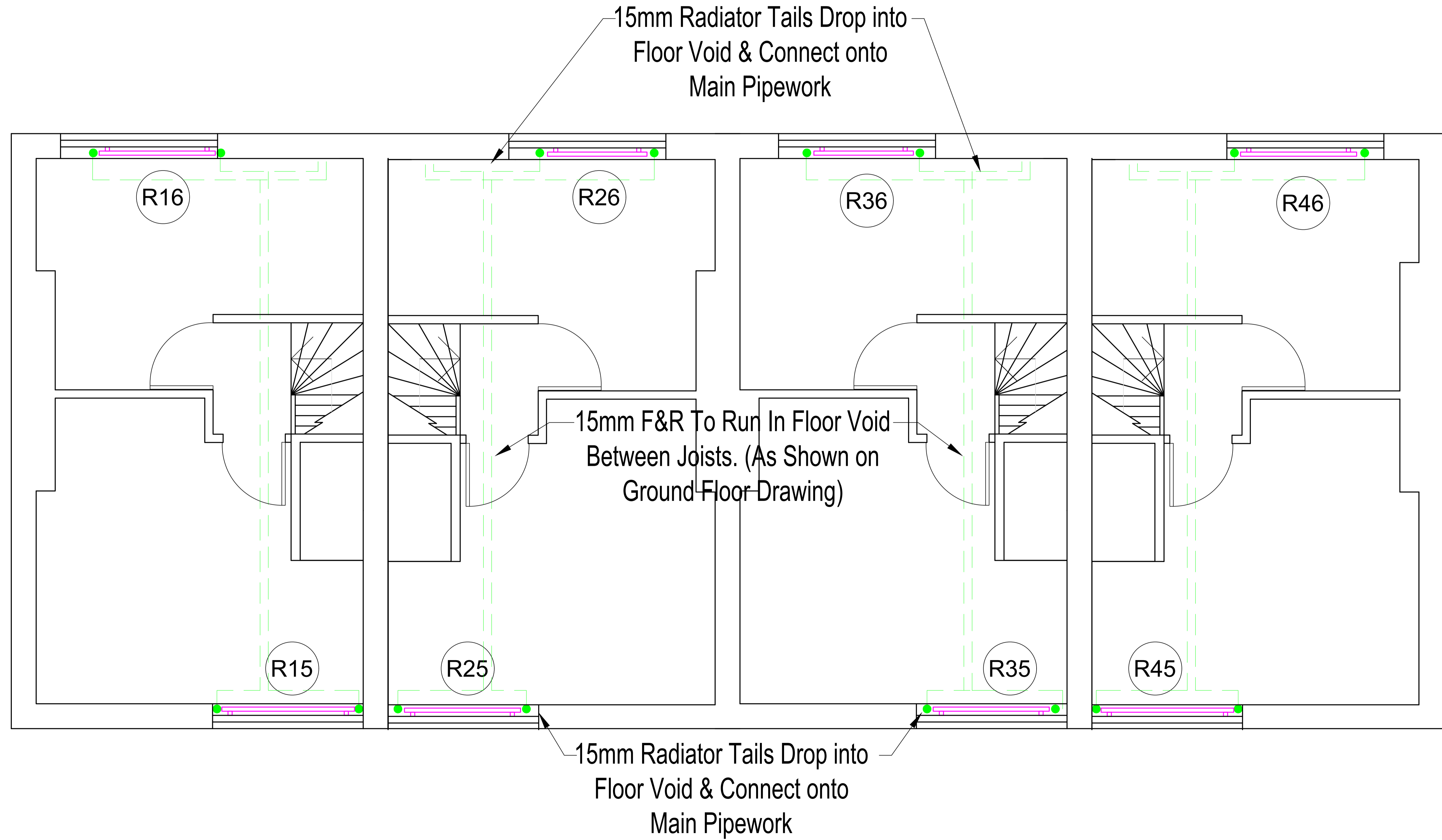
DRAWING NO: H / 100 REVISION: A

NOTES
 IF IN DOUBT ASK
 Dimensions to be verified on site.
 This drawing is the property of CBS Design Consultants.
 Copyright is reserved by them and the drawing is issued on
 the condition that it is not copied, reproduced, retained or
 disclosed to any unauthorised person, either wholly or in part
 without the consent in writing of CBS Design Consultants.

REVISIONS

BY	DATE	DETAILS
0	01.11.18	FOR INFORMATION
A	14.12.18	TENDER ISSUE

KEY



CBS
 design consultants

132 Royal College Street, London NW1 0TA
 t: 020 7428 8840 e: cbs@cbs-uk.com www.cbs-uk.com

PROJECT:
 West Hampstead Fire Station

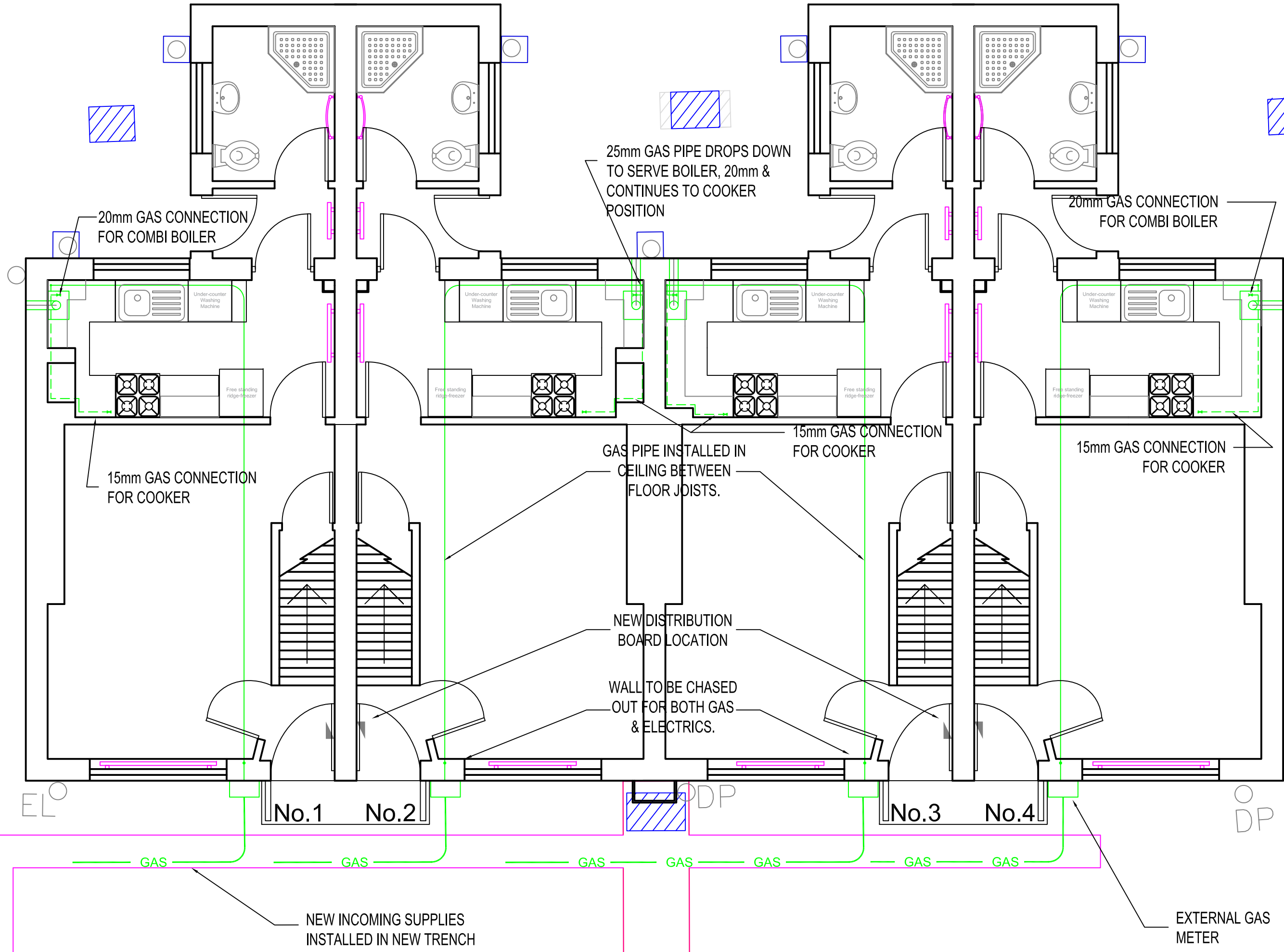
CLIENT:
 London Fire Commissioner

DRAWING TITLE:
 FIRST FLOOR
 Proposed Heating System

SCALE: 1:50 @A3 DATE: Nov. '18 BY: CT

ISSUE STATUS:
 DESIGN TENDER CONSTRUCTION RECORD

DRAWING NO: H / 101 REVISION: A



NOTES
 IF IN DOUBT ASK.
 Dimensions to be verified on site.
 This drawing is the property of CBS Design Consultants.
 Copyright is reserved by them and the drawing is issued on the condition that it is not copied, reproduced, retained or disclosed to any unauthorised person, either wholly or in part without the consent in writing of CBS Design Consultants.

REVISIONS

BY:	DATE:	DETAILS:
0	01,11,18	FOR INFORMATION
A	14,12,18	TENDER ISSUE

KEY



132 Royal College Street, London NW1 0TA
 t: 020 7428 8640 e: cbs@cbs-uk.com www.cbs-uk.com

PROJECT:
 West Hampstead Fire Station

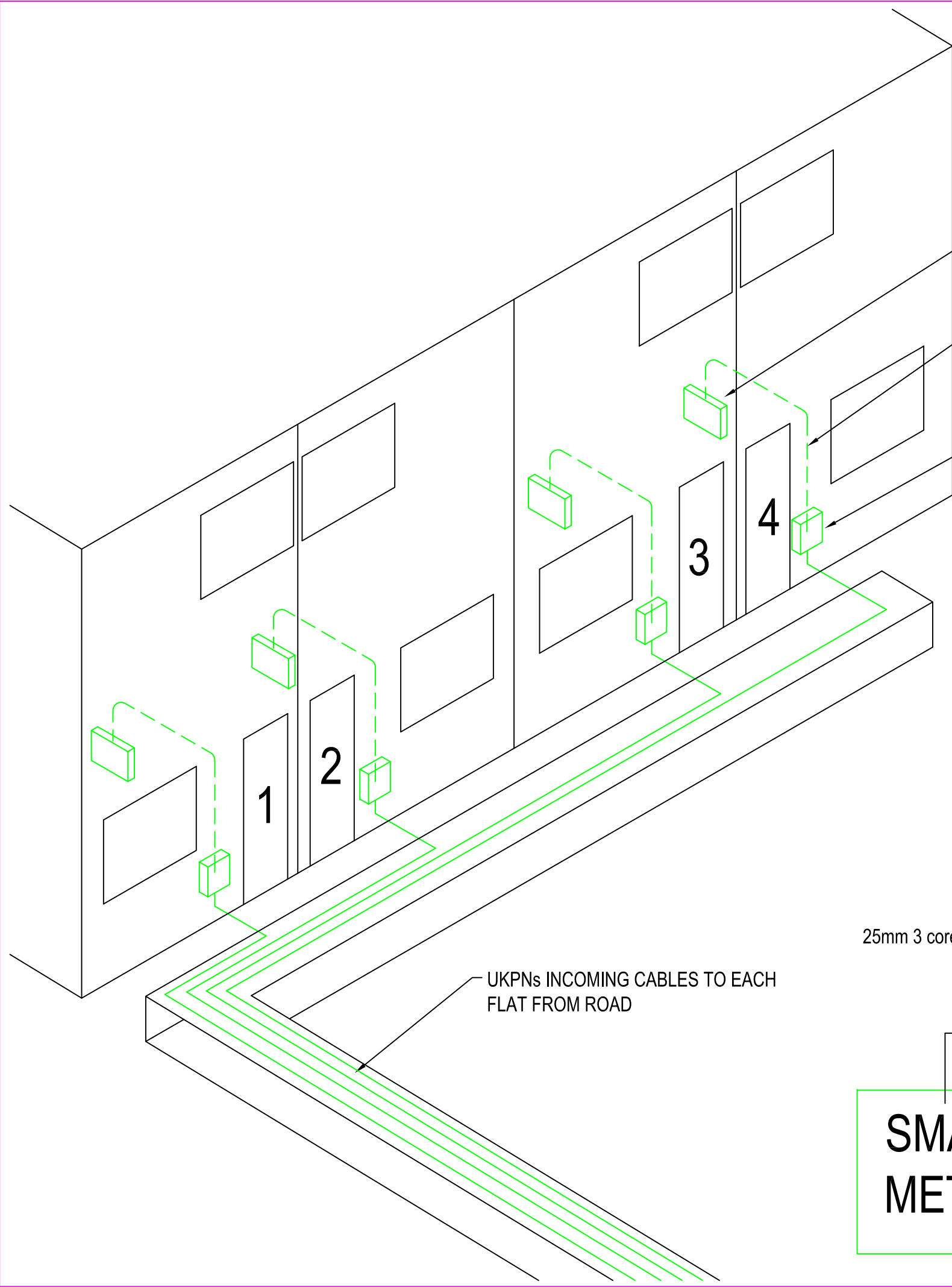
CLIENT:
 London Fire Commissioner

DRAWING TITLE:
 GROUND FLOOR
 Domestic Gas Services

SCALE: 1:50 @A3
DATE: Nov, '18
BY: CT

ISSUE STATUS:
 DESIGN TENDER CONSTRUCTION RECORD

DRAWING NO: G / 100
REVISION: A



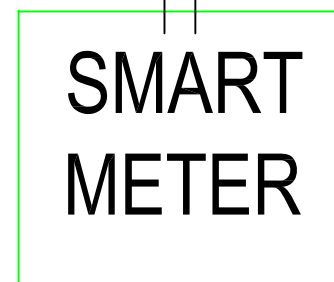
CONSUMER UNIT LOCATED IN CUPBOARD UNDERSTAIRS

COTRACTOR TO INSTALL CABLING FROM METER, INTERNALLY CONCEALED IN BUILDING FABRIC

UKPNs CABLES TURN UP INTO EXTERNAL METER BOX.

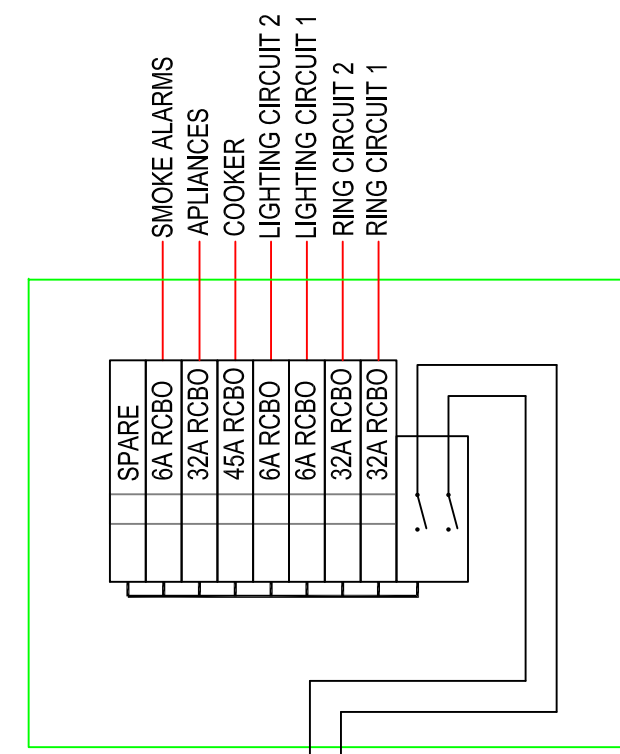
UKPNs INCOMING CABLES TO EACH FLAT FROM ROAD

25mm 3 core XLPE/SWA/LSOH



SMART METER LOCATED EXTERNAL NEAR FRONT DOOR

TYPICAL CONSUMER UNIT ARRANGEMENT



NOTES
 IF IN DOUBT ASK
 Dimensions to be verified on site.
 This drawing is the property of CBS Design Consultants.
 Copyright is reserved by them and the drawing is issued on the condition that it is not copied, reproduced, retained or disclosed to any unauthorised person, either wholly or in part without the consent in writing of CBS Design Consultants.

REVISIONS

BY:	DATE:	DETAILS:
0	22.11.18	FOR INFORMATION
A	14.12.18	TENDER ISSUE

KEY

CBS
 design consultants

132 Royal College Street, London NW1 0TA
 t: 020 7428 8640 e: cbs@cbs-uk.com www.cbs-uk.com

PROJECT:
 West Hampstead Fire Station

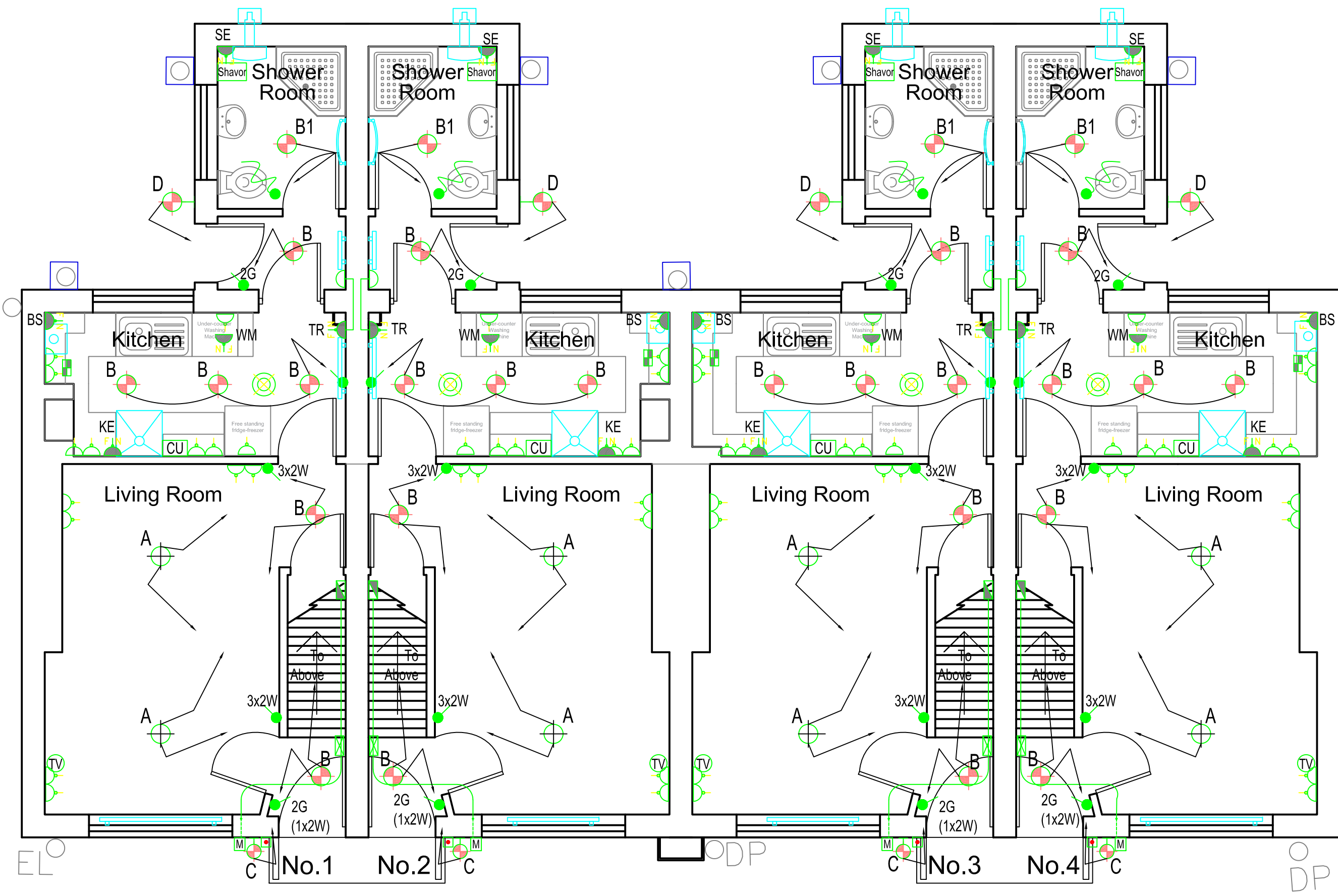
CLIENT:
 London Fire Commissioner

DRAWING TITLE:
 Electrical Schematic

SCALE: NTS DATE: Nov.'18 BY: CT

ISSUE STATUS:
 DESIGN TENDER CONSTRUCTION RECORD

DRAWING NO: E001 REVISION: A



NOTES
 IF IN DOUBT ASK.
 Dimensions to be verified on site.
 This drawing is the property of CBS Design Consultants.
 Copyright is reserved by them and the drawing is issued on the condition that it is not copied, reproduced, retained or disclosed to any unauthorised person, either wholly or in part without the consent in writing of CBS Design Consultants.

REVISIONS

BY:	DATE:	DETAILS:
0	20.11.18	FOR INFORMATION
A	14.12.18	TENDER ISSUE

- KEY**
- ELECTRICAL METER
 - CONSUMER UNIT
 - TWIN 13A SWITCHED SOCKET OUTLET
 - FUSED CONNECTION UNIT
 - WM - Denotes Washing machine
 - BS - Denotes Boiler Supply
 - KE - Denotes Kitchen Extract
 - SE - Denotes Shower Extract
 - TR - Denotes Towel Rail
 - CU COOKER CONTROL UNIT
 - TV TV OUTLET
 - Shavor SHAVOR UNIT
 - SMOKE ALARM Grade D Category LD2
 - CARBON MONOXIDE DETECTOR
 - A PENDANT LUMINAIRE
 - B RECESSED DOWNLIGHT
 - LIGHT SWITCH
 - PULL CORD SWITCH
 - DOOR BELL PUSH BUTTON
 - DOOR BELL CHIME UNIT

CBS
 design consultants

132 Royal College Street, London NW1 0TA
 t: 020 7428 8640 e: cbs@cbs-uk.com www.cbs-uk.com

PROJECT:
 West Hampstead Fire Station

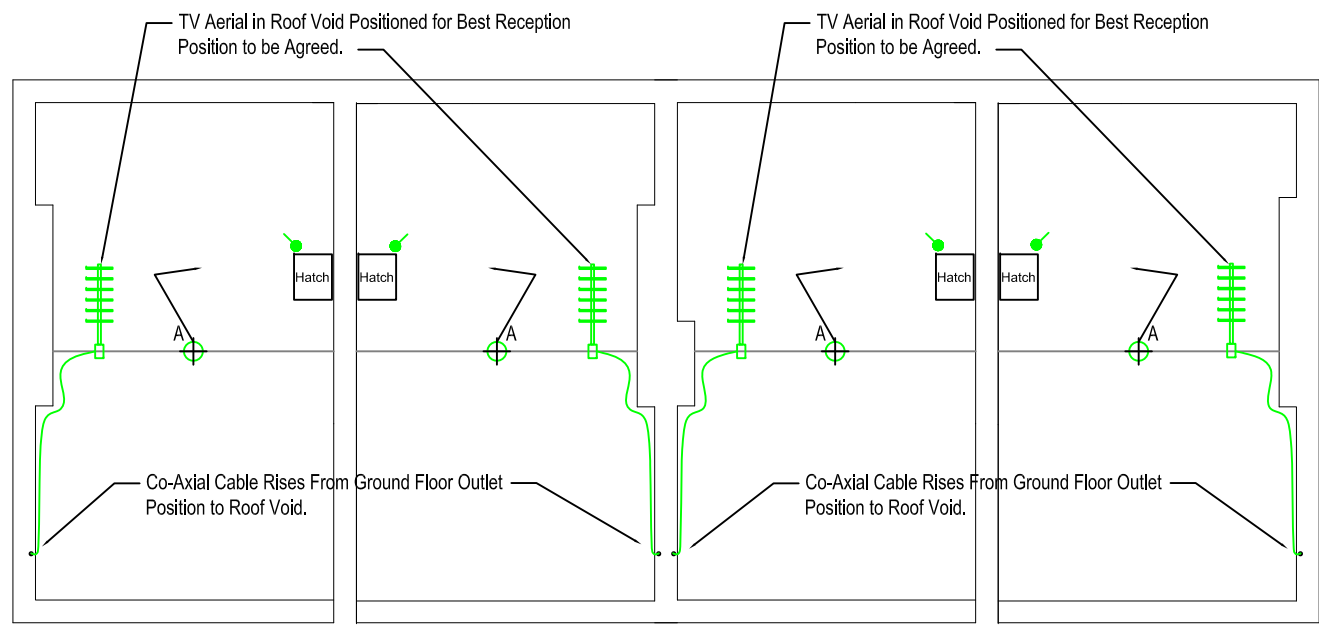
CLIENT:
 London Fire Commissioner

DRAWING TITLE:
 GROUND FLOOR
 Preliminary Electrical Layout

SCALE: 1:50 @A3 DATE: Nov. '18 BY: CT

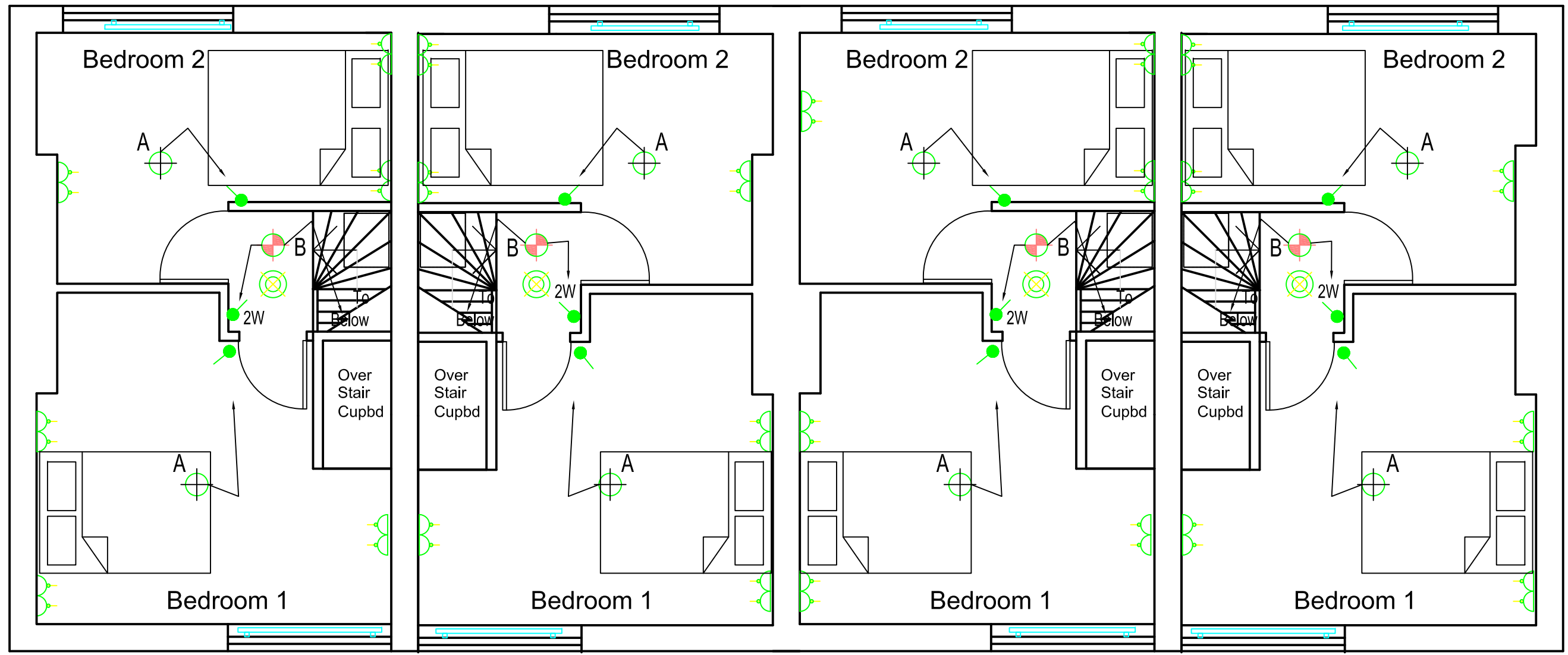
ISSUE STATUS:
 DESIGN TENDER CONSTRUCTION RECORD

DRAWING NO: E100 REVISION: A



ROOF VOID

SCALE:1:100 @ A3



FIRST FLOOR

SCALE:1:50 @ A3

NOTES
IF IN DOUBT ASK.
Dimensions to be verified on site.
This drawing is the property of CBS Design Consultants.
Copyright is reserved by them and the drawing is issued on the condition that it is not copied, reproduced, retained or disclosed to any unauthorised person, either wholly or in part without the consent in writing of CBS Design Consultants.

REVISIONS

BY	DATE	DETAILS
0	20.11.18	FOR INFORMATION
A	16.12.18	TENDER ISSUE

- KEY
- TWIN 13A SWITCHED SOCKET OUTLET
 - SMOKE ALARM
Grade D Category LD2
 - PENDANT LUMINAIRE
 - RECESSED DOWNLIGHT
 - LIGHT SWITCH

CBS
design consultants

132 Royal College Street, London NW1 0TA
t: 020 7428 8640 e: cbs@cbs-uk.com www.cbs-uk.com

PROJECT:
West Hampstead Fire Station

CLIENT:
London Fire Commissioner

DRAWING TITLE:
FIRST FLOOR & ROOF VOID
Preliminary Electrical Layout

SCALE: As Shown DATE: Nov. '18 BY: CT

ISSUE STATUS:
DESIGN TENDER CONSTRUCTION RECORD

DRAWING NO: E / 101 REVISION: A