

- 5.3.2 The sitting room fireplace has been much opened up to form a large opening with a late 20th C tiled hearth has been set within it. The wall area around this opening has been finished with modern gypsum plaster.
- 5.3.3 In the centre of the sitting room ceiling is a modern plastic light rose from which is hung by the remains of a modern chandelier type fitting.
- 5.3.4 The door from the sitting room to the kitchen is generally as that described from the entrance lobby.
- 5.3.5 Within the kitchen the chimneystack remains, but this has had the opening much enlarged in width and height. In the upper section there was a built-in cooker unit that appeared to be under some form of steel plate that has possibly been used as an ad-hoc to support the brickwork above.
- 5.3.6 In the rear wall adjacent to the chimney breast is a large opening from where an extractor fan or similar as been removed.
- 5.3.7 The units in the kitchen are all modern standard joinery items with a stainless steel single bowl and single drainer sink in the worktop. There is glazed ceramic tiling to the wall behind.
- 5.3.8 There is no door to the rear lobby.
- 5.3.9 The bathroom has a solid floor covered with modern glazed ceramic floor tiles. The walls on the west and south sides are tiled either up to windowsill level or for the full height using modern 100 mm square glazed ceramic wall tiles.
- 5.3.10 The ceiling over the bathroom is of varnished timber boarding over battens fixed through the plasterboard ceiling above.
- 5.3.11 The stairs and landing are generally as that described for south central cottage including the un-boarded balustrade to the head.
- 5.3.12 The doors off the landing to the bedrooms, are missing.
- 5.3.13 Within the front bedroom the cupboard unit over the stairs is generally as that previously described. Built-in against the wall to the rear bedroom is the carcass of a wardrobe and the ceiling over this has been adapted accordingly.
- 5.3.14 The front bedroom fireplace has been fully covered over.
- 5.3.15 In the rear bedroom the fireplace has been completely covered over.



Fig 5.3.11: Landing with balustrade at door to front bedroom

6 PROPOSED WORKS

6.1 External

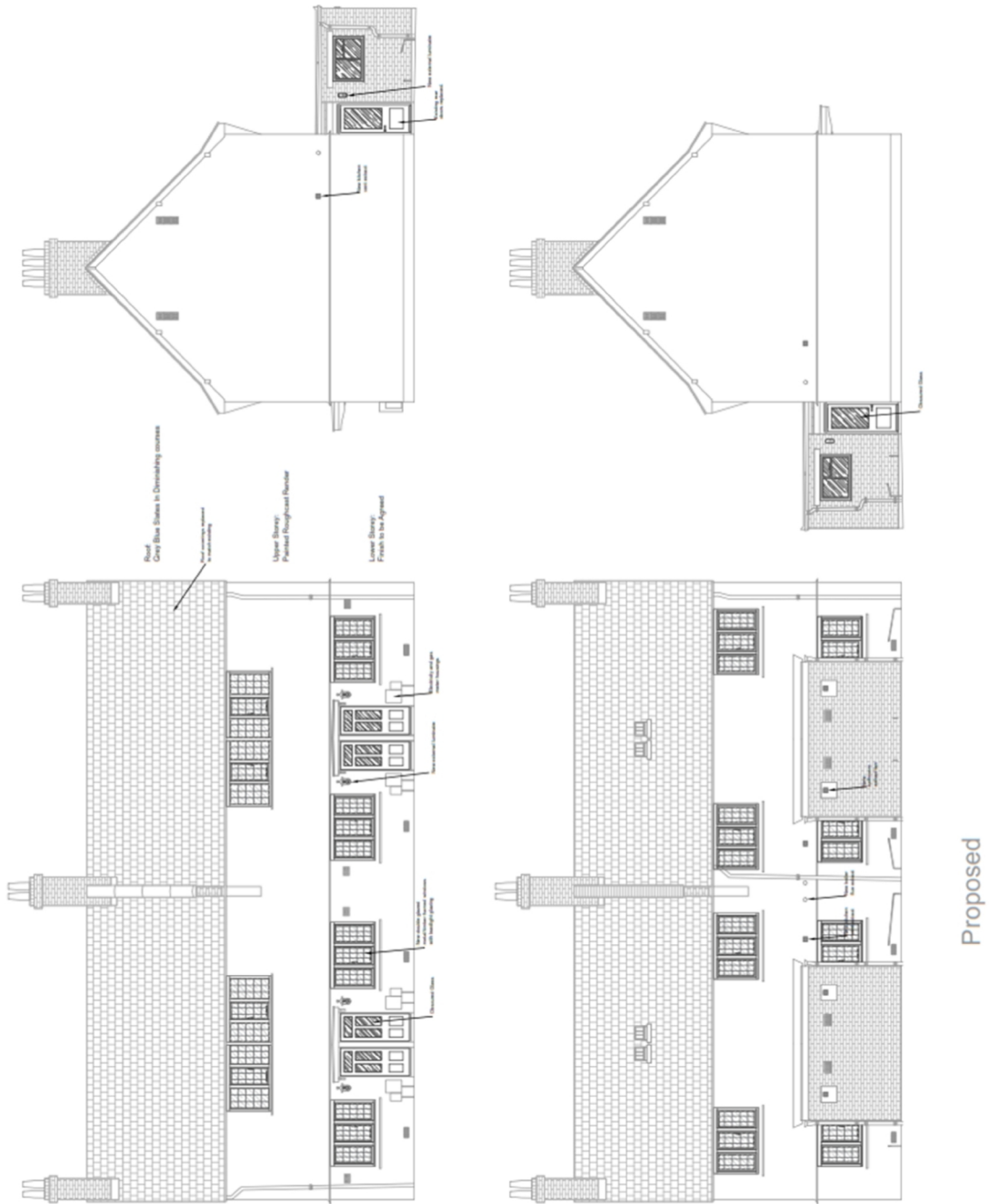


Fig 6.1: proposed external work