

Aluminium Shutters & Grilles





◀ A218 with 25mm punched holes

Aluminium Shutters & Grilles

Experience

Syston Doors have been manufacturing aluminium rolling shutters and grilles for over forty years and probably provide the largest range available.

Every shutter is backed by years of experience to ensure total quality.

Custom Design

For maximum versatility we manufacture and supply our aluminium shutters and grilles to suit your exact requirements in a variety of attractive styles with the option of fixed or removable, straight or angled, intermediate guides allowing total flexibility in length of 'run' required.

Removable guides will usually be fixed into the counter or floor by use of flush fitting spring loaded retaining keeps (dustcaps).

Applications

Designed for use in bars, reception counters, display areas, serveries, shopfronts, homes, cupboards etc.

Ironmongery and Locking

Locking is by shootbolts on shutters.

An option for a cylinder espagnolette lock to the bottom rail is available. This throws a lock bar into each side guide and not the counter top/floor.

A cylinder lock is included as standard on all rolling grilles.

Locks would normally be omitted if electrically operated.

Operation

Self coiling (manual push up/pull down) operation by counter balanced sprung roller is available up to 3500mm in width subject to model.

Electric operation by single-phase 240v 'tubular motor' with activation by rocker switch or keyswitch, with or without manual handcrank override, is available as an option.

N.B. Consideration should be made as to the user of the shutter or grille. If the user is less able we recommend that the shutter/grille be split into two parts or electrically operated if over 3000mm wide.

Hoods, Fascias and/or Soffits

These are available at extra cost in aluminium or galvanized sheet steel, with or without a powder coated finish.

A218 Shutter

- Extruded 50mm flat faced single skin lath
- Can be punched in-line, brickbond with a 150 x 25mm slot or with a 25mm diameter hole
- Can be mixed with A275, A550 or A900 brickbond or in-line grille sections for part vision
- Manually operable up to 3500mm clear wide, electrically up to 5700mm clear wide
- Suitable for internal or external use
- Standard finishes are 'mill' or silver anodised. Gold and Black anodised and powder coated finish also available

A90 Shutter

- Designed for larger openings
- Extruded 90mm single skin lath, which can be mixed with Vision 90 lath for part vision
- Manually available up to 3500mm clear wide, electrically up to 6500mm clear wide
- Suitable for internal or external use
- Standard finishes are silver, gold and black anodised and powder coated

N.B. A90 will not reverse roll

Vision 90 Shutter

- Designed for larger openings, such as shopfronts, where the option of vision using punched slots or 45mm diameter holes is required, offering a high level of clear vision
- Vision slots can be in-line or brickbond and can be infilled with strong 2mm clear polycarbonate
- Extruded 90mm flat faced single skin lath, which can be mixed with A90 lath when only part vision is required
- Manually available up to 3500mm clear wide, electrically up to 6500mm clear wide
- Suitable for internal or external use
- Standard finishes are silver, gold and black anodised and powder coated

Available with the following slot/hole sizes:

145mm x 45mm with 50mm gap between each slot

145mm x 45mm with 25mm gap between each slot

260mm x 45mm with 50mm gap between each slot

260mm x 45mm with 25mm gap between each slot

45mm diameter holes

N.B. Vision 90 will not reverse roll

A275, A550, A900 Brickbond & In-line Rolling Grilles

A traditional 'tube & link' grille for all applications with the following mesh sizes:

A275 70 x 60mm

A275 In-line 35 x 60mm

A550 140 x 60mm

A550 In-line 70 x 60mm

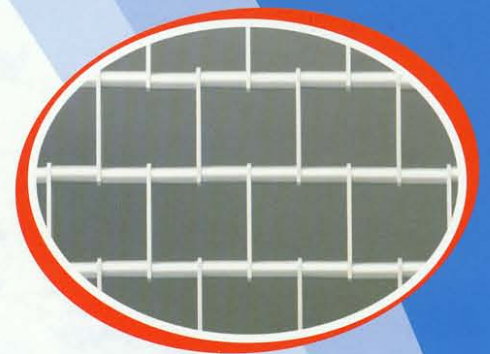
A900 230 x 60mm

A900 In-line 115 x 60mm

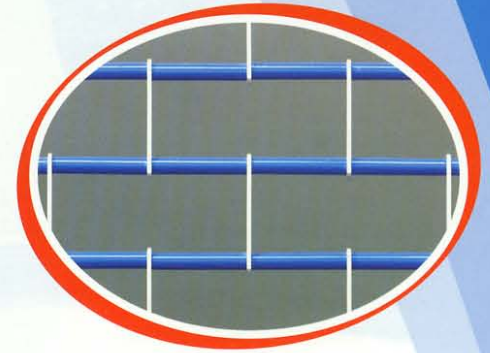
- Manually operable up to 3500mm clear wide, electrically up to 6000mm clear wide
- Suitable for internal or external use
- Standard finishes are 'mill' or silver anodised. Gold and Black anodized, powder coated finish and antique bronze, silver and gold also available
- The A275, A550 & A900 grilles include for a 50mm captivated guide for added security

A300 Plastic Link Rolling Grille

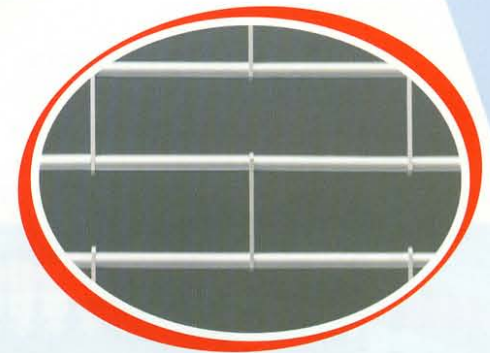
- Designed for internal openings only
- Manually operable up to 3500mm clear wide, electrically up to 6000mm clear wide
- Links are available in white, black, brown and red with guides and bottom rail in silver anodised aluminium. Guides and bottom rail can be powder coated at extra cost



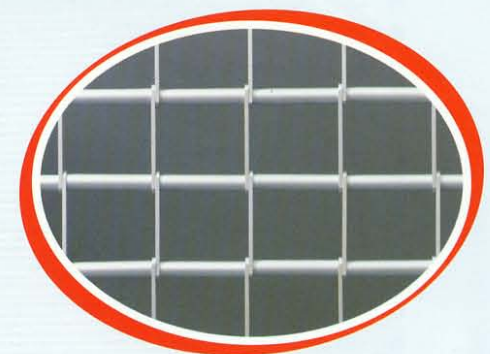
A275 Brickbond



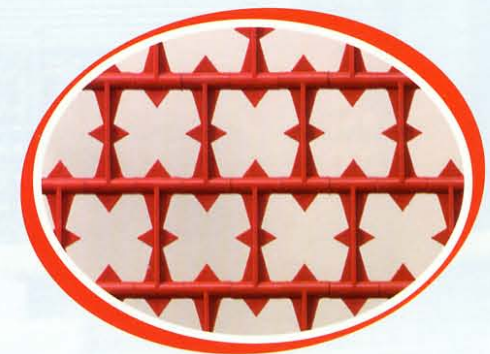
A550 Brickbond



A900 Brickbond



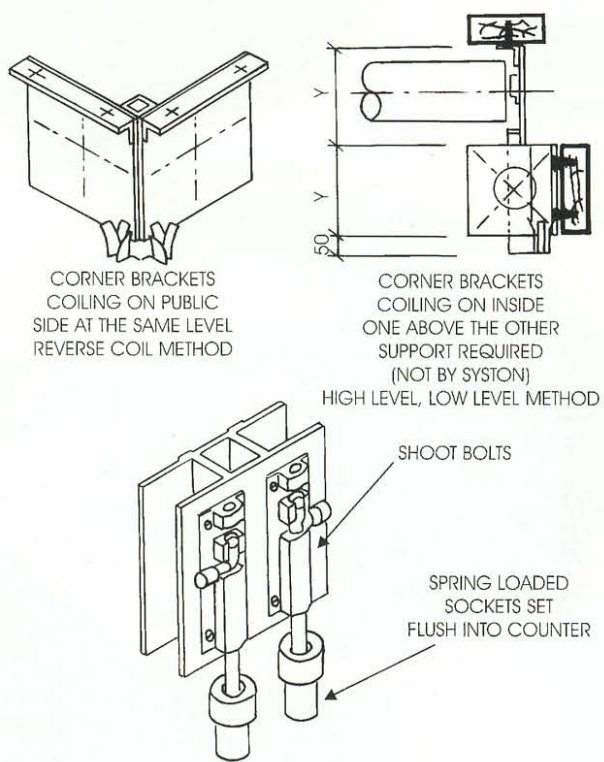
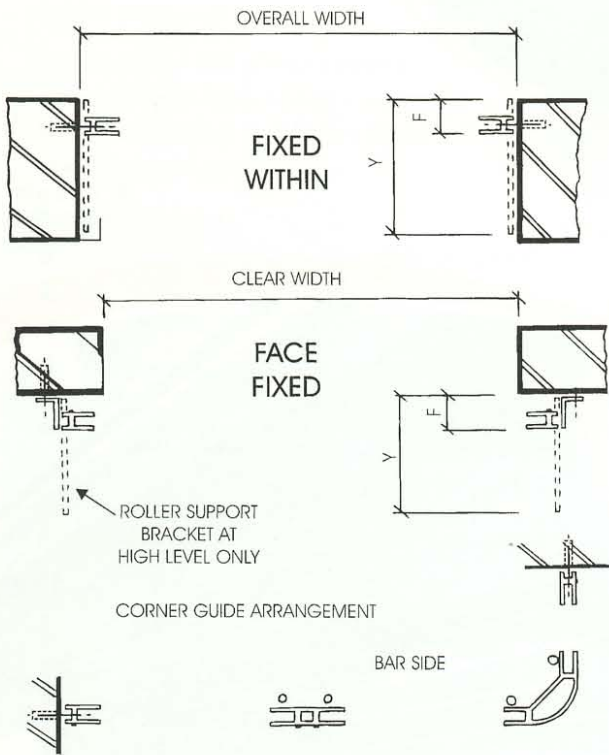
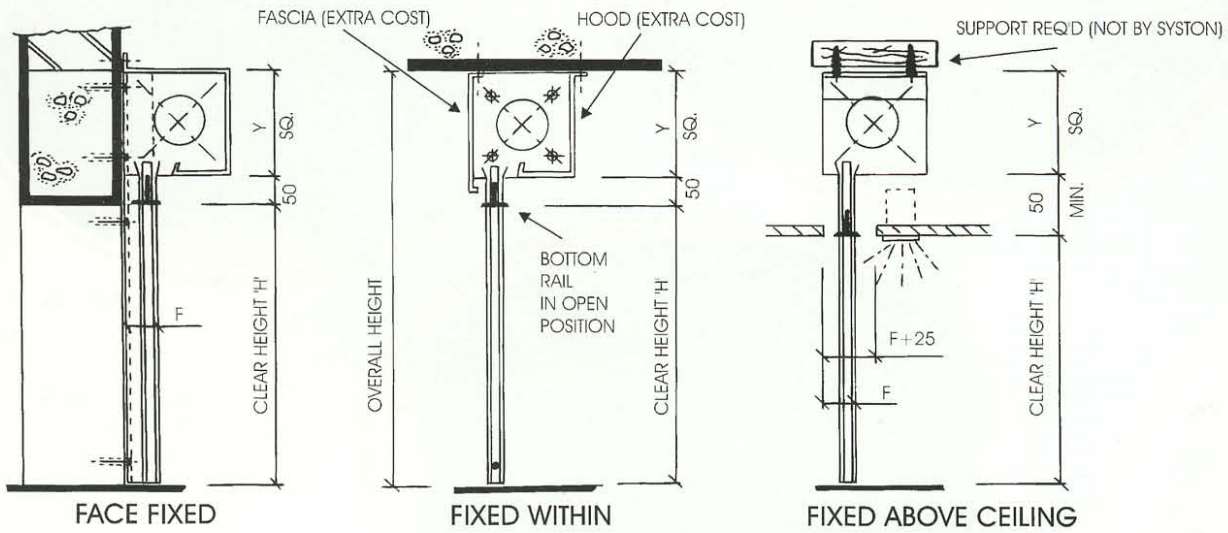
A550 In-line



A300 Plastic Link

Technical Information

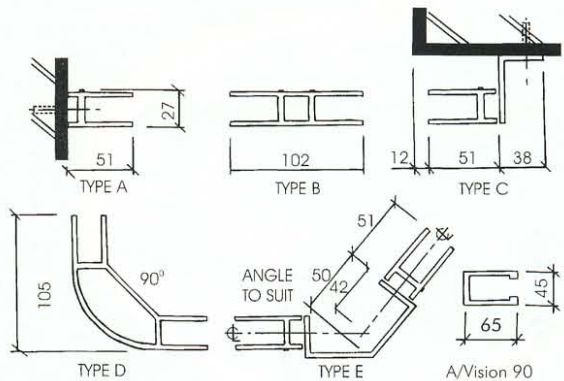
Further technical information is given on our website...



Please note: When electrically operated an additional 56mm is needed behind the back of the standard guides shown, depending on the size of the shutter

HEIGHT	A218 Grilles		
	'H'	'Y'	'F'
UP TO 1000	200	230	50
UP TO 1500	230	254	50
UP TO 2000	254	280	50
UP TO 2600	280	305	65
UP TO 3200	305	330	65
Weight	20kg/m ²	30kg/m ²	

HEIGHT	A/VISION 90		
	'H'	'Y'	'F'
2500	250	65	
3000	305	65	
3500	330	65	
4000	360	65	
Weight	30kg/m ²		



If shutters are to reverse roll, the 'Y' size will be increased by 30mm

ELECTRIC SHUTTERS/GRILLES OVER 26.5Kgs CURTAIN WEIGHT WILL INCLUDE A SAFETY BRAKE AT THE NON MOTOR END DEPENDING ON INSTALLATION LOCATION IN ACCORDANCE WITH BS EN 13241-1



◀ A300



A900 ▶

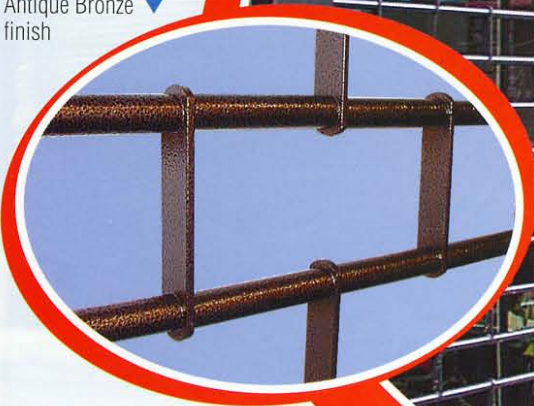


▶ A90 with Vision 90 glazed laths



◀ A900

▼ A218 with A900 grille



▼ Antique Bronze finish



Syston Doors is a leading manufacturer and supplier of industrial doors, rolling shutters and associated products and has developed a comprehensive range to meet the requirements of the specifier, designer and end user.

Established since 1920 and with a wealth of experience, Syston Doors is based in Syston, near Leicester at the heart of the motorway network, offering nationwide service.

Our range includes:

- Rolling Shutters & Grilles in Steel, Aluminium and Timber
- Fire Resisting Rolling Shutters
- Rapid Action Doors
- Steel Doorsets
- Folding Shutter Doors
- Dock Shelters, Seals & Dock Levellers
- Insulated Rolling Shutters
- Insulated Sectional Doors
- Transparent Rolling Door Systems
- Sliding Folding Closures
- PVC Strip Curtains & Rubber Crash Doors
- Collapsible Grilles for Windows & Doorways
- Window Rolling Shutters
- Moveable Walls & Concertina Screens
- Domestic Garage Doors & Rolling Shutters
- Retractable Awnings & Shading Systems

Nationwide Repair & Service to all makes & types of Industrial Door

Syston Doors

SYSTON ROLLING SHUTTERS LTD TRADING AS SYSTON DOORS

Albert Street, Syston, Leicester LE7 2JB, U.K.
Telephone: (0116) 260 8841 Fax: (0116) 264 0846
email: sales@syston.com
or visit www.syston.com

